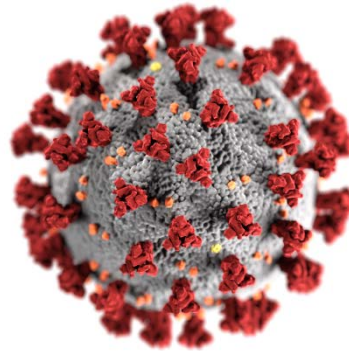




Government of Western Australia  
WA Country Health Service

# Non- COVID Impacts of COVID-19 Pandemic



Social indicator  
monthly reports WA  
DOH

Dr Marisa Gilles  
Director Public health  
RHW conference  
March 27<sup>nd</sup>



# Weekly cases by WHO region

## Situation by WHO Region



Daily

Weekly

Cases

Deaths

Count ▼

Americas 53,937,714 confirmed

Europe 42,504,449 confirmed

South-East Asia 14,182,826 confirmed

Eastern Mediterranean 7,123,963 confirmed

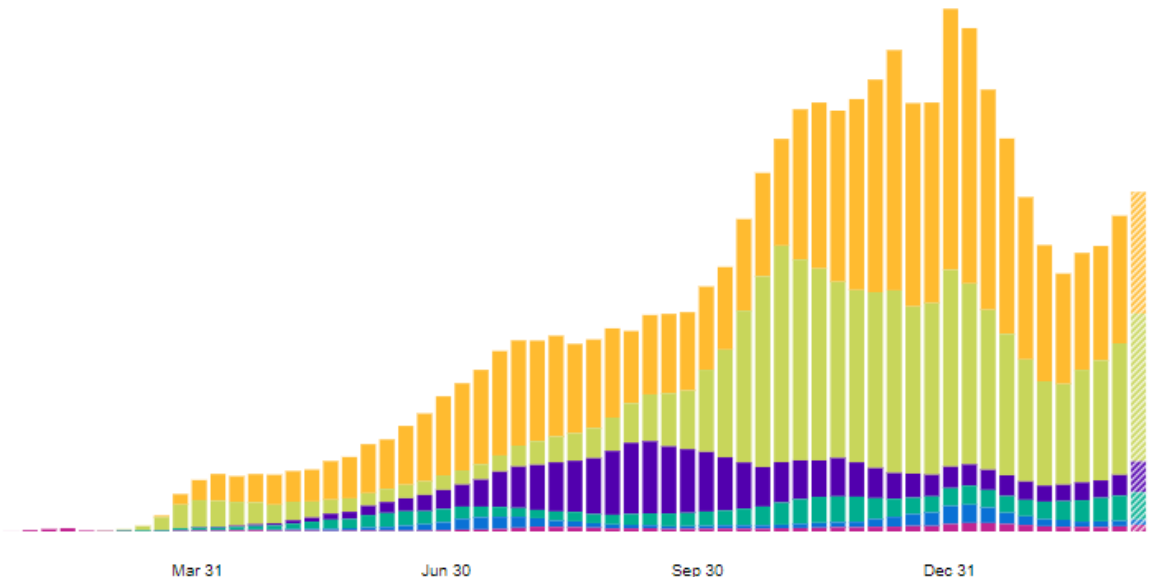
Africa 2,999,152 confirmed

Western Pacific 1,775,575 confirmed

Source: World Health Organization

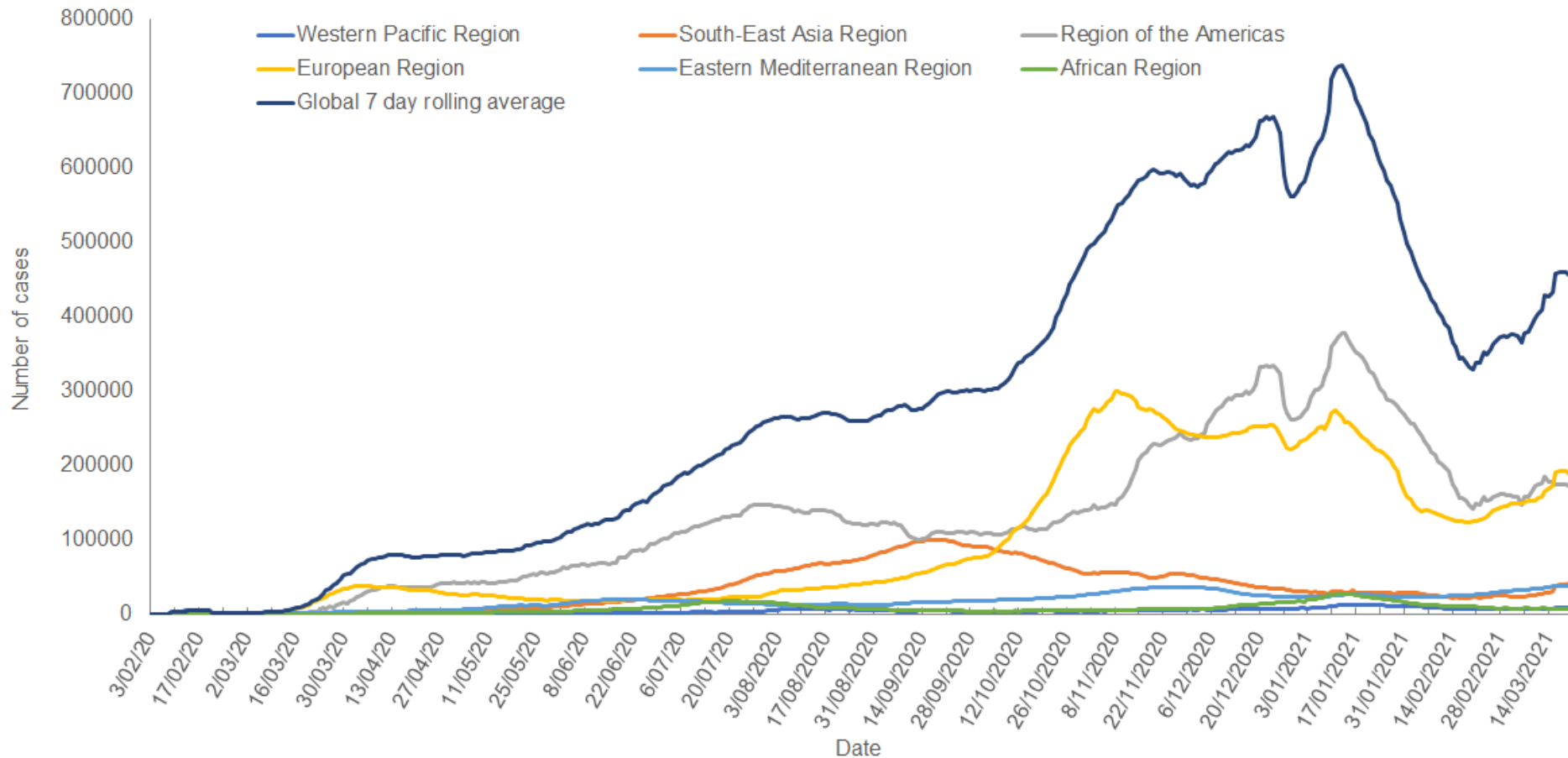
Data may be incomplete for the current day or week.

c 31





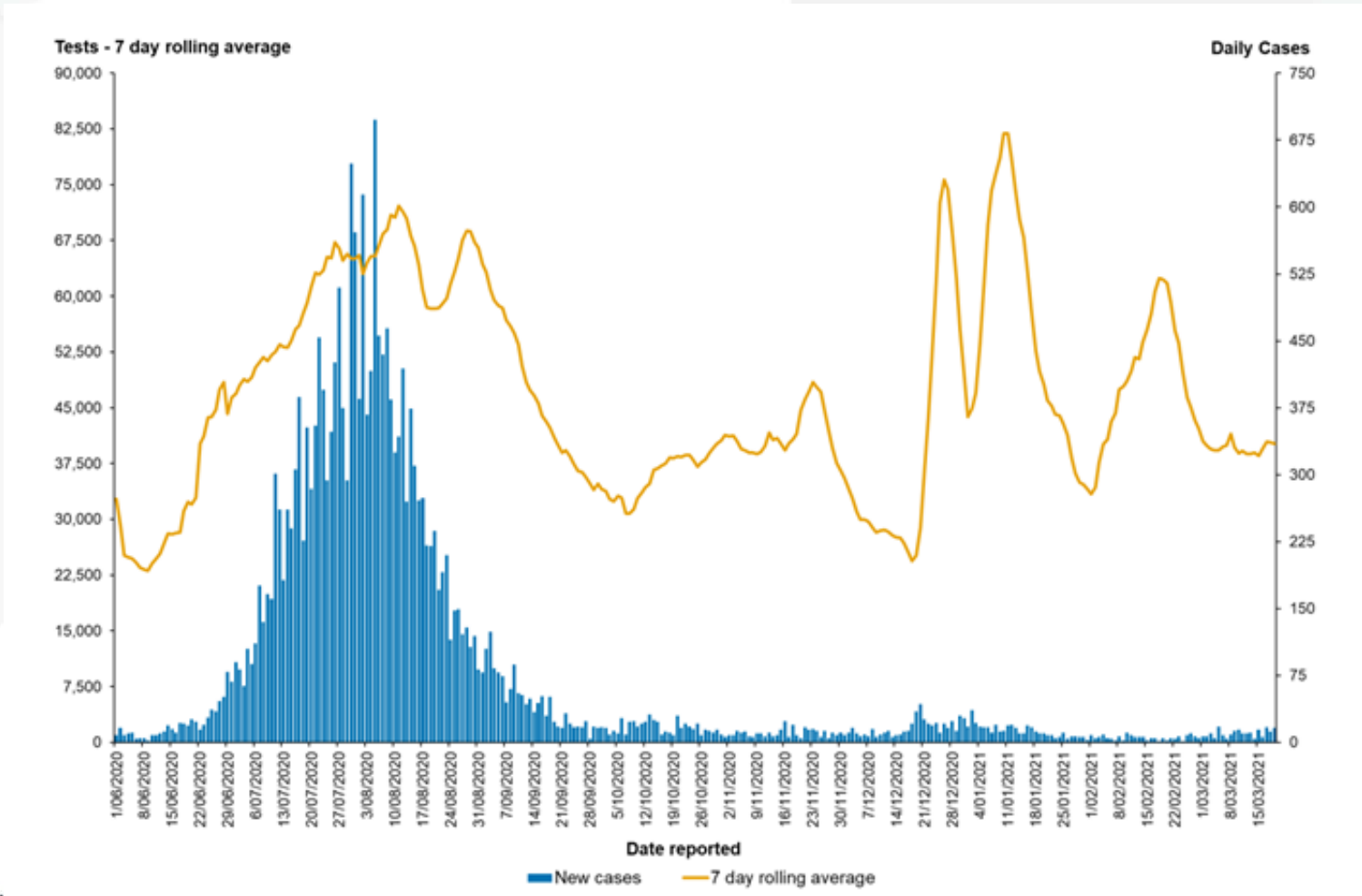
# Global 7 day moving average by WHO region





# NATIONAL

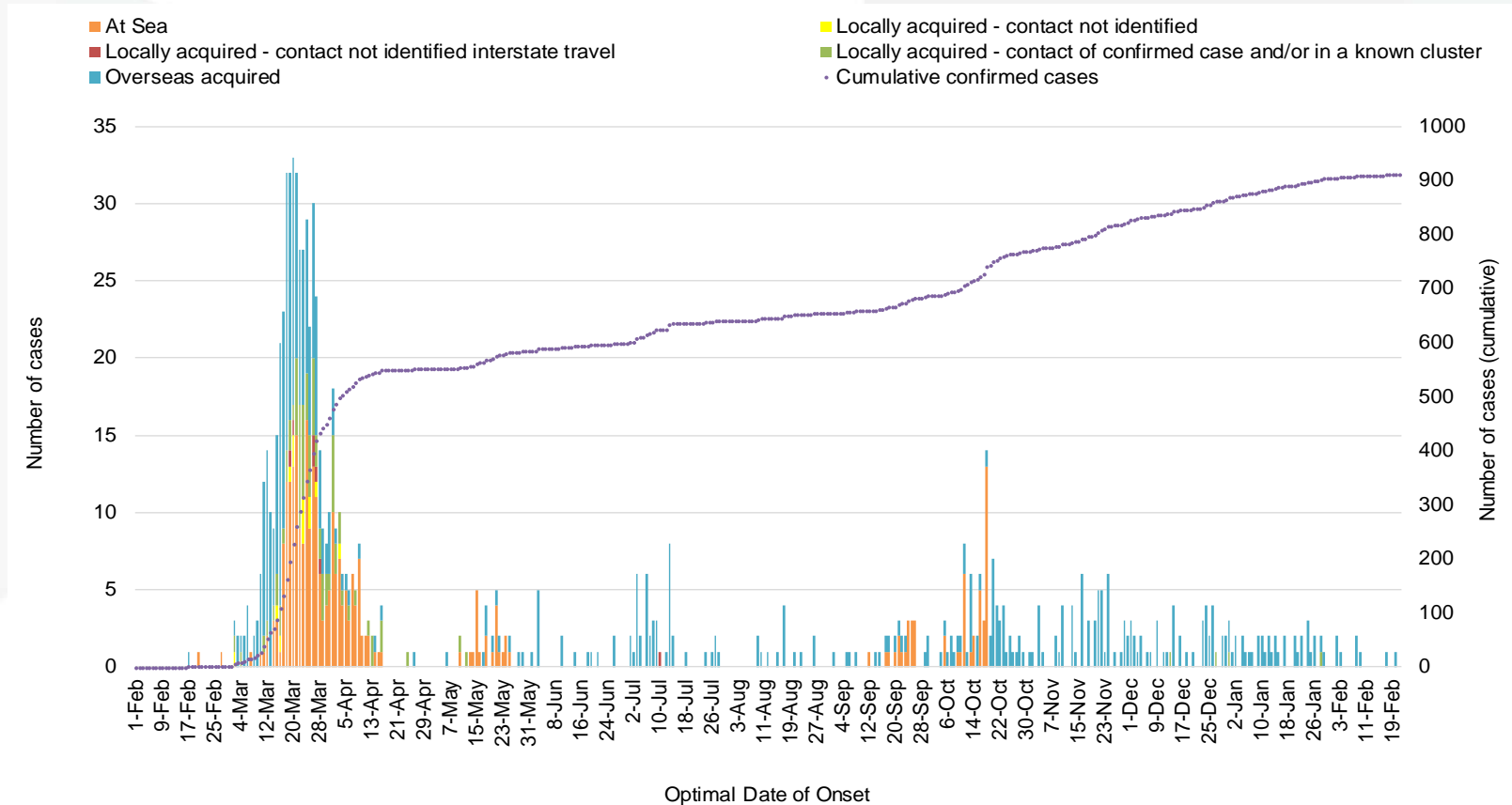
**Figure 2.** Number of daily reported cases and 7 day rolling average of tests conducted (since 01 June 2020), Australia (as at 1500 hrs, 19 March 2021)





# Western Australia

## Epi curve of WA notified COVID-19 cases by optimal date of onset and place of acquisition





I need a city.

I need culture, museums, cafes,  
dusty bookshops, public spaces,  
people watching, art galleries and  
late night jazz.

Soo F.....tired of these four  
walls



# PSYCHOLOGICAL EFFECTS OF LOCKDOWN

- Negative psychological effects; PTSD, confusion, anger.
- Long-lasting effects
- Stressors:
  - longer quarantine duration, infection fears, frustration, boredom, inadequate supplies, inadequate information, financial loss, and stigma
- Actions:
  - quarantine for no longer than required, provide clear rationale for quarantine and information about protocols, ensure sufficient supplies are provided



# MENTAL HEALTH WA

Between July 2020 and January 2021 an increase of:

- 1.9% number of people requiring admission for acute mental health problems
- 7.4% ED presentation for self-harm
- 35.0% increase in Lifeline WA calls answered

From the same period the year before





## PARENTS IN CRY FOR HELP WEST AUSTRALIAN 23 FEB 2021

- Calls for support doubles
- New parents and expectant mothers suffering from anxiety and depression
- Border restrictions – lack of parental support
- General distress in the community



# THE MENTAL TOLL OF THE PANDEMIC WESTERN AUSTRALIAN 13 FEB 2021

- Beyond Blue calls for support increased by 42% during the lockdown
- People earning > \$150,00 were more concerned
- Concerns about family life, work and isolation and lonely



## **FAMILY VIOLENCE** FAMILY COURT OF AUSTRALIA, 2020)

Family violence has increased since the introduction of state-wide isolation measures

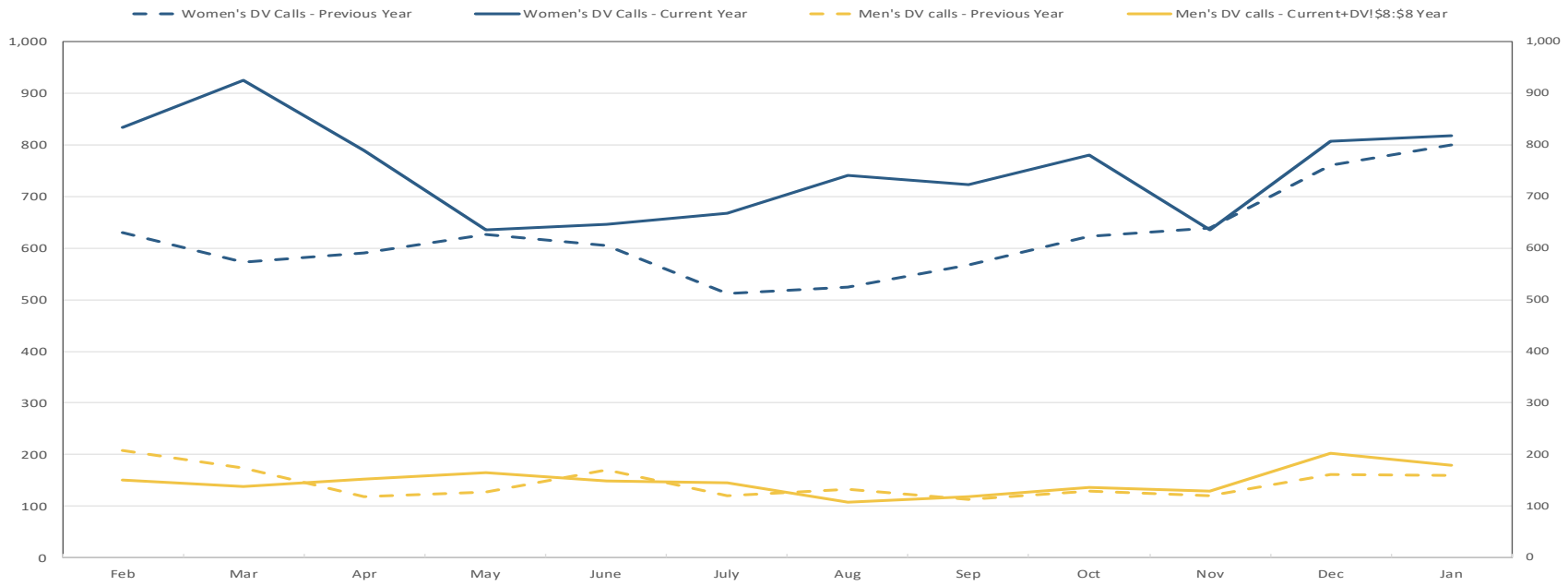
- 40% increase in client numbers
- Family Court of Australia 39 % increase in parenting-related disputes
- Federal Circuit Court of Australia reported a 23 % increase



# FAMILY AND DV - WA

- Calls to the WA 1800RESPECT number were high during January (between 390 and 407 calls). The last time call volumes in WA were over 380 per week was in June 2020.
- Calls to the women's FDV helpline have been tracking above 2019 levels with the exception of November 2020.

**Calls to FDV helplines (inc. calls transferred in)**  
Number during the month



Source: Department of Communities



## ALCOHOL USE

Increase in alcohol consumption

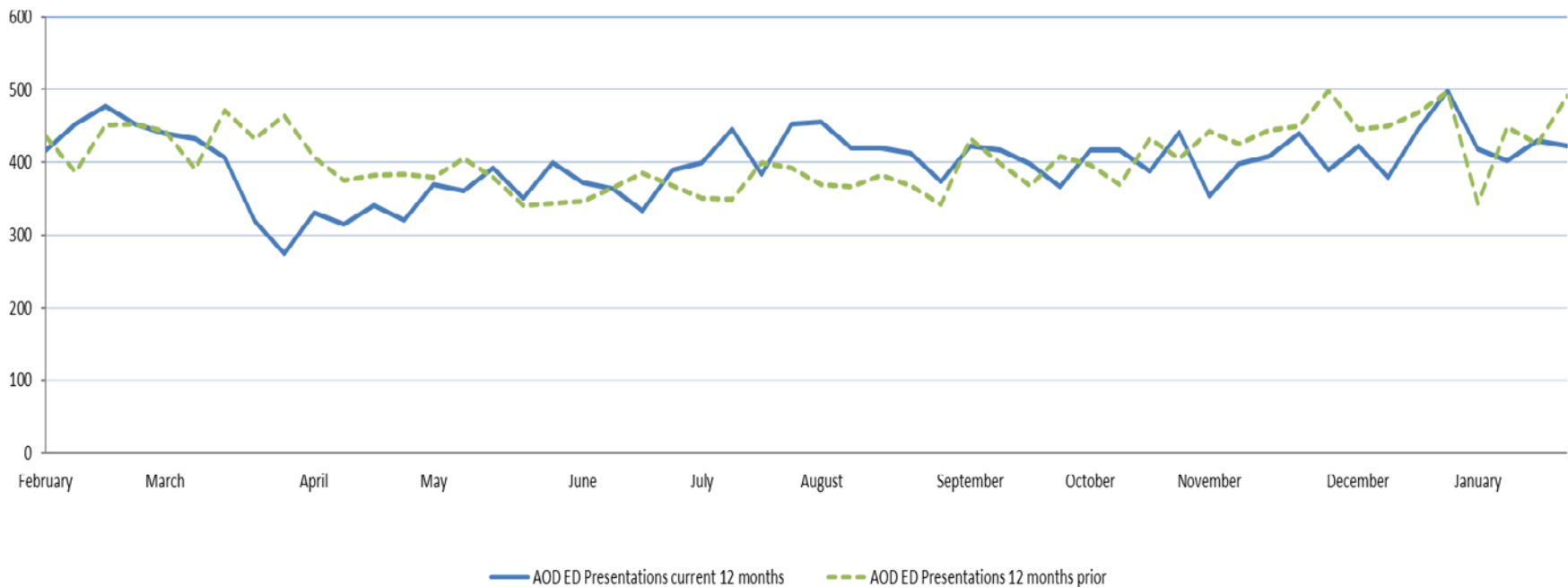
- 20% of Australians purchased more alcohol
- 70% drinking more alcohol than usual
- 1/3 using alcohol daily
- 28% reported that they were drinking alcohol to cope with anxiety and stress

# ALCOHOL AND OTHER DRUGS (AOD) WA



- AOD ED presentations for January 2021 similar levels to the same time 2019 year.

Alcohol and Other Drug Related ED Presentations

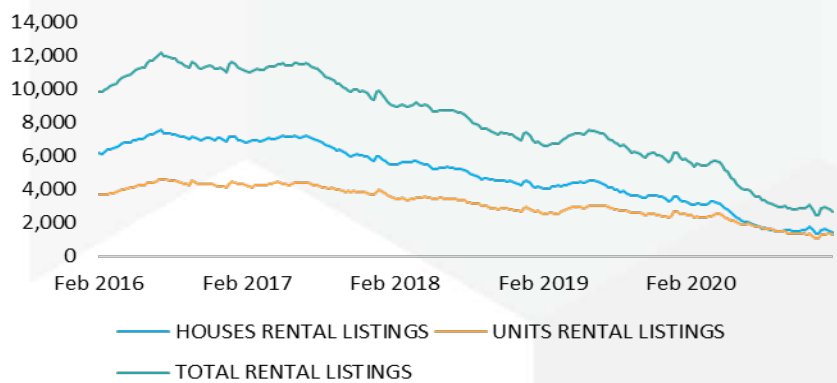




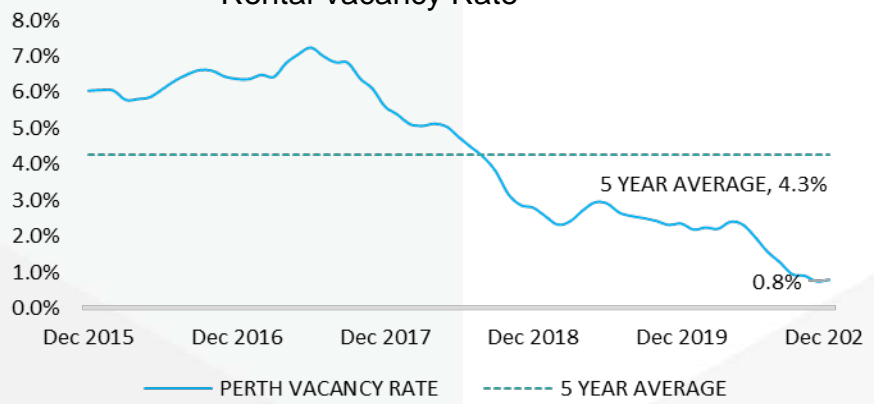
# RENTAL MARKET

- Rental listings in Perth dropped 48.5% drop when compared to the 5,371 listings of 12 months ago.
- Preliminary REIWA data indicates that the rental vacancy rate for January 2021 was 0.9%, well below 5 year (4.6%) and 10 year (4.2%) averages.
- The median rent in Perth for February 2021 was \$400 p/wk, up from \$395 p/wk (Jan 2021) and \$390 p/wk (Nov 2020).

Advertised Listings For Rent



Rental Vacancy Rate





## UNEQUAL EFFECTS

- People who were already poor, further marginalised by increased vulnerability to both physical and mental illness ([Friel & Demaio, 2020](#))
- [Philanthropy Australia \(2020\)](#) threatened NFP organisations, and their capacities to assist
- As demand increased, the pandemic diminished ability to fundraise





## INCREASE RACISM

- Increase in complaints of racism to the Human Rights Commission
- 1/3 complaints related to the virus
- Verbal and physical abuse and vandalism
- Chinese people especially targeted
- Suffering insecurity, fear and mental ill-health ([Fang & Yang, 2020](#))



# ACCESS TO THE INTERNET

A measure of social inequality

- 56% experiencing entrenched disadvantage had access to the Internet at home
- 1/3 could not afford it
- People lower incomes and homelessness only mobile
- 1/2 in urgent need due to COVID-19 at risk of being excluded from government services
- NGOs also had difficulties with the cost of access to digital technologies



## EDUCATION

- 1/3 largest export earner
- Travel restrictions resulted several thousand students unable to return to the country to begin their studies
- The sector that the government has not sought to protect
- Estimated that nationally, the coronavirus puts 21,000 jobs at risk, due to a projected revenue decline of between \$3 billion and \$4.6 billion ([Universities Australia, 2020](#))



# INFRASTRUCTURE REMOTE ABORIGINAL COMMUNITIES

- Impact on availability of contract workers
- Over crowding
- HCW workforce shortages – border closures

Dwayne Mallard

Chairperson of Meenangu Wajarri Aboriginal Corporation and also Chairperson of Wajarri Enterprise Ltd



## DISRUPTION OF OTHER HEALTH SERVICES

- Other communicable diseases – syphilis, malaria and TB
- Risk of maternal death lack of access to transport
- Reduction in sexual and maternal health services
- Reduced Immunisation campaigns
- Non- communicable diseases and diagnoses
- Cancer diagnosis and treatment



## DELAYED CANCER DIAGNOSIS

- Notifications for cancer 30% reduction in reporting colorectal, prostate, breast, melanoma and lung cancer
- Represent approximately 60% of all cancer diagnoses
- Estimated an additional 3000 - 4000 cancer presentations over the next 12 months due to delayed diagnosis
- Presenting with later stage disease and for the capacity of the health care system, including primary care



# CHILDHOOD IMMUNISATION AND COVID-19

- Parental concerns exposing their children to COVID-19 during well child visits
- USA has seen a decline in routine paediatric vaccination
- England MMR delivered dropped by 20%
- 60% reported families who had considered cancelling or postponing their child's vaccinations
- The importance of vaccination lost among the dominant message that everyone should stay at home and avoid burdening the NHS
- Children and their communities face increased risks for outbreaks of VPD



## COVID -19 AND THE ARTS - DECIMATED

- Live musical performances in indoor spaces have been cancelled
- Millions of musicians are affected events that have been cancelled or postponed till 2021
- All Broadway theatres in NY have been closed until 1 June 2021
- There is no indication of these events will return to normal in the near future





## ARTS AND COVID -19

- Devastating effects on staffing, and independent artists characterised by a high proportion of self-employment.
- Cirque du Soleil laid off 95% of its workforce and closed traveling circus performances operating in 7 countries.
- Performing arts festivals such as the Edinburgh Festival cancelled.
- Opera Australia temporarily stood down nearly all their staff in order to avoid bankruptcy.
- By March 23, 255,000 cultural events had been cancelled, with an estimated revenue loss of \$A280 million
- By the end of March, the Metropolitan Opera expected to lose US\$60 million in revenue.



# COVID-19 AND THE ENVIRONMENT

A number of positive effects on the environment.

- notoriously dirty, the waterways and rivers in the world look cleaner
- the air fresher
- the smog gone, the haze dispersed
- the wildlife has filled the open spaces
- aquatic species are returning

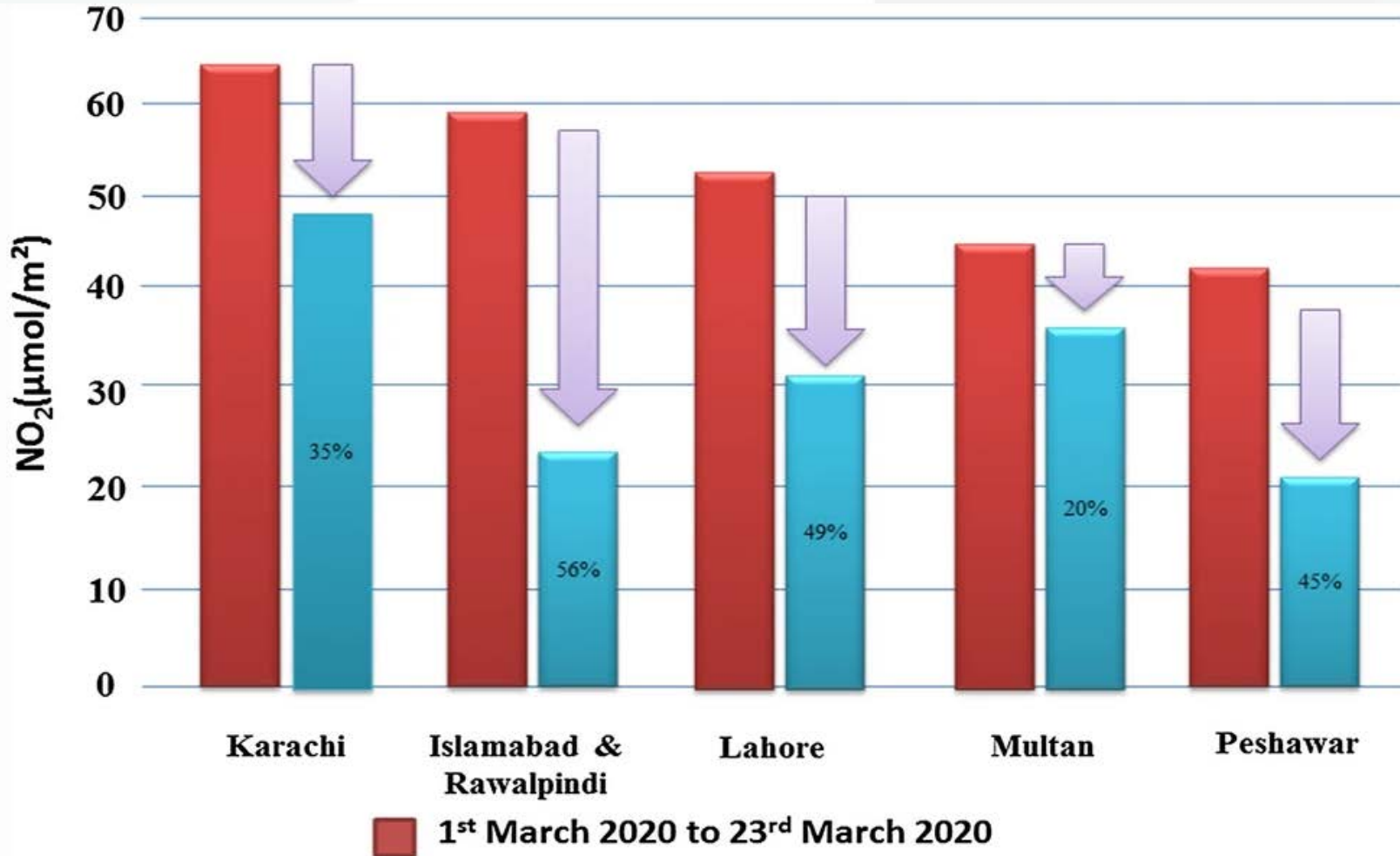


## AIR QUALITY IN THE WORLD OF COVID-19

Millions of people die every year because of polluted air, considered to be slow killers.

In China

- emissions of harmful gases and other pollutants dropped 25%
- quality of air improved 1.4% in 337 cities
- WHO estimated that this change has saved 50,000 lives





## WATER QUALITY AND COVID-19

- India - the biological oxygen demand of the rivers Ganga and Yamuna has decreased
- Venice the water clearer and aquatic life is visible



## AQUATIC SPECIES AND COVID-19

- Noise impact on the humpback whales and other marine life -the removal of just the cruise ships a massive change in the amount of ocean noise
- Saudi Arabia COVID-19 lockdown between February - July accelerate the recovery of fish stocks and other marine organisms



## TRANSPORT AND COVID -19

- In UK 25 largest cities, congestion levels dropped from 73% to 16%
- In India, daily movement of trucks reduced to less than 10%
- USA travel levels have been dropped by 48%
- New York experienced the largest drop 63%
- The road traffic of Barcelona has shrunk by 80%
- Italy traffic levels have been reduced by 65%



## GREATER INVESTMENT IN HOSPITALS.

- Colombia had 5,400 ICUs beds last January. Today it has 7,279
- Number of ventilators increased substantially
- A similar trend can be seen in other countries in the region
- There will be more hospital beds in a region that was below global standards in this area





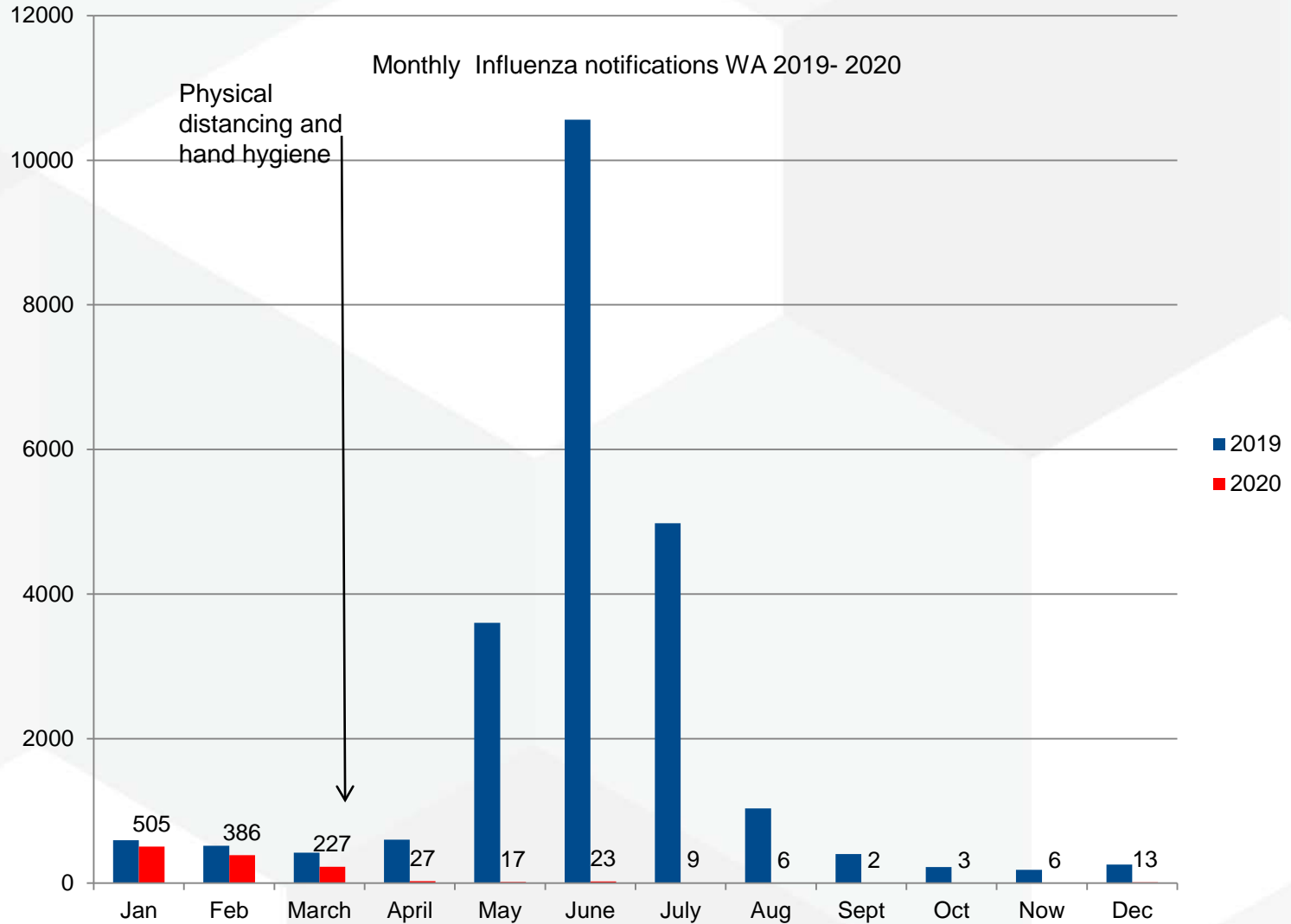
## GREATER USE OF INFORMATION AND COMMUNICATION TECHNOLOGY (ICT) AND DIGITALIZATION

- Companies and individuals have adapted virtual tools to carry out activities that were previously face-to-face
- Greater access to information and knowledge, as well as productivity gains



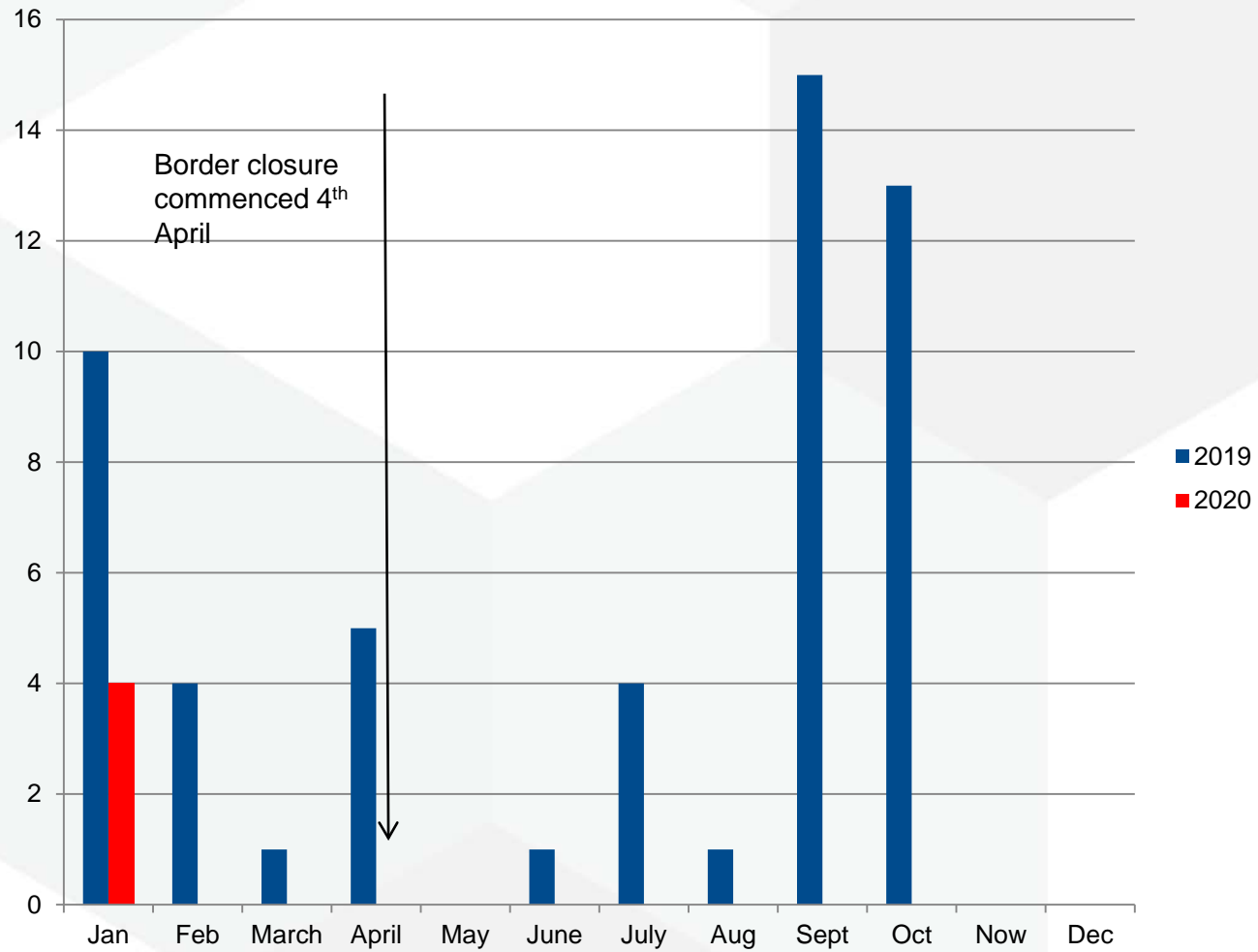
# TELE MEDICINE – COVID-19

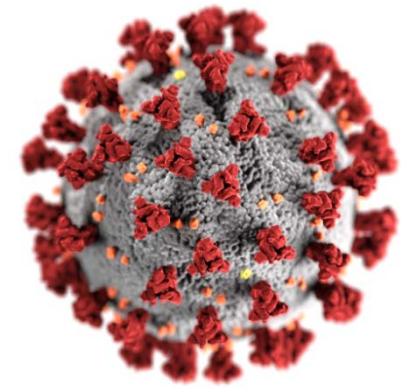
- Prior to pandemic, issues with regulation and reimbursement prevented telemedicine from being used in healthcare
- Studies have shown that telemedicine appointments can be equal to in-patient visits in a variety of specialties
- Utilisation allows high-quality healthcare while maintaining physical distancing
- The benefits include
  - convenience,
  - increased access to care from a distance
  - decreased healthcare costs.





### Monthly Measles notifications WA 2019- 2020





## COVID-19 IT'S LEGACY

- Consequences both negative and positive
- Will we ever return to pre-COVID days?
- Do we even want to?
- How do we address the negative consequences?
- How do we maintain the positive consequences?

What consequences do we not even know about yet?