



Broome Needle and Syringe Exchange Program

Kimberley Mental Health and Drug Service – WA Country Health Service



Acknowledgement of Country

We would like to respectfully acknowledge the Wadandi people, the traditional owners of the lands on which we are presenting today.

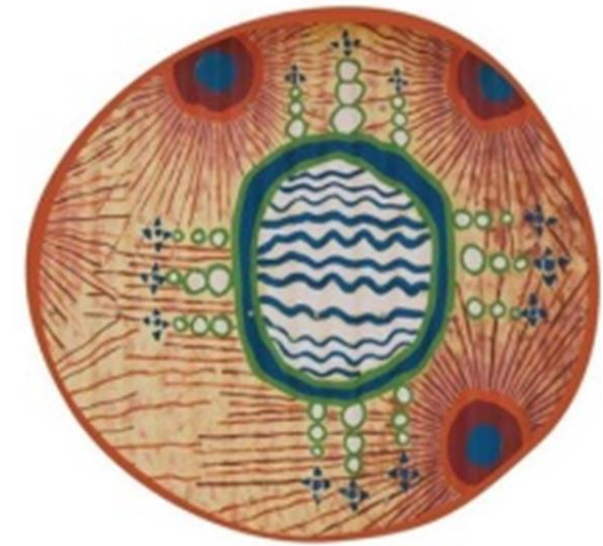
We also respectfully acknowledge the Yawuru people, the traditional owners of the lands on which this project is based.

We pay our respects to elders, past, present and emerging and acknowledge all Aboriginal people here with us today.



What we will cover

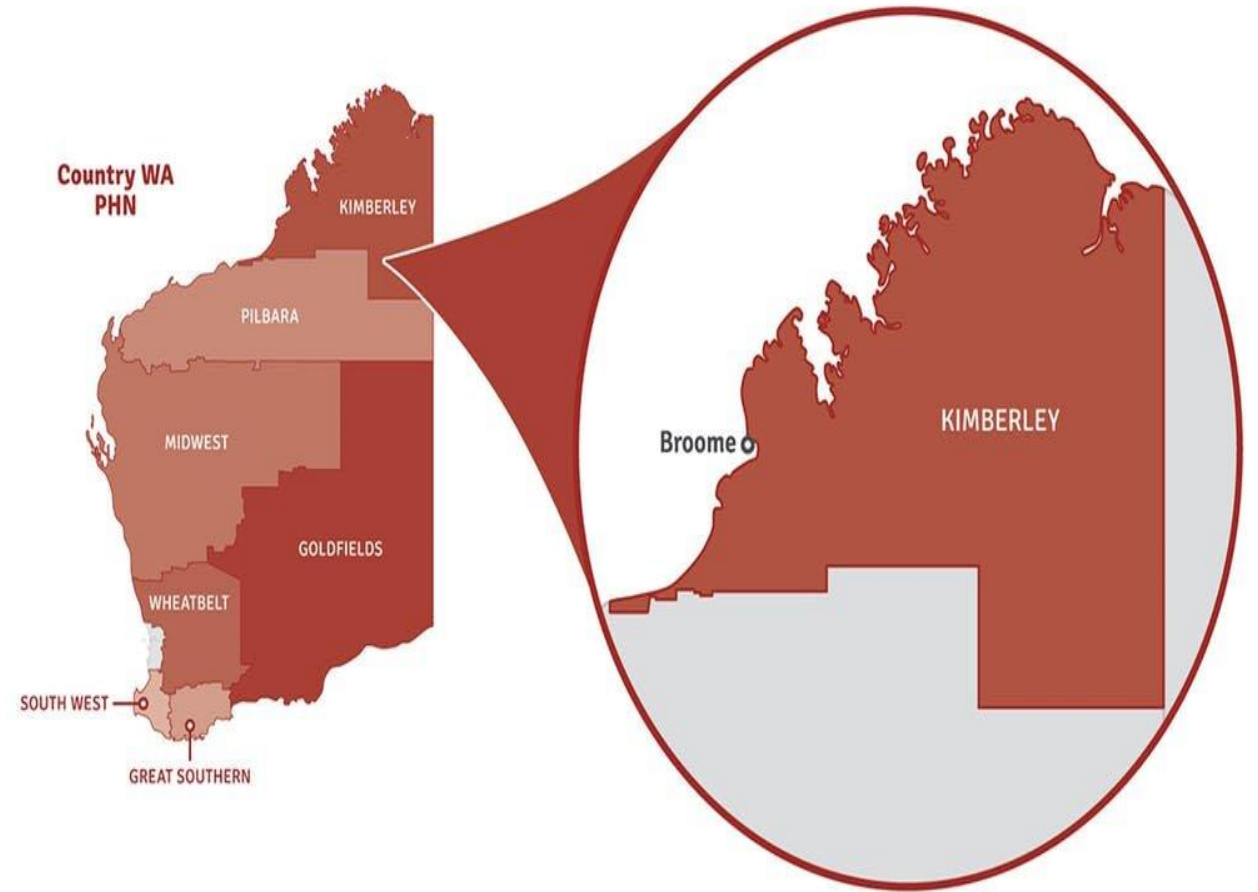
- Who we are
- How it started
- A different approach
- Challenging the stigma
- Learnings so far



Kimberley Mental Health &
Drug Service

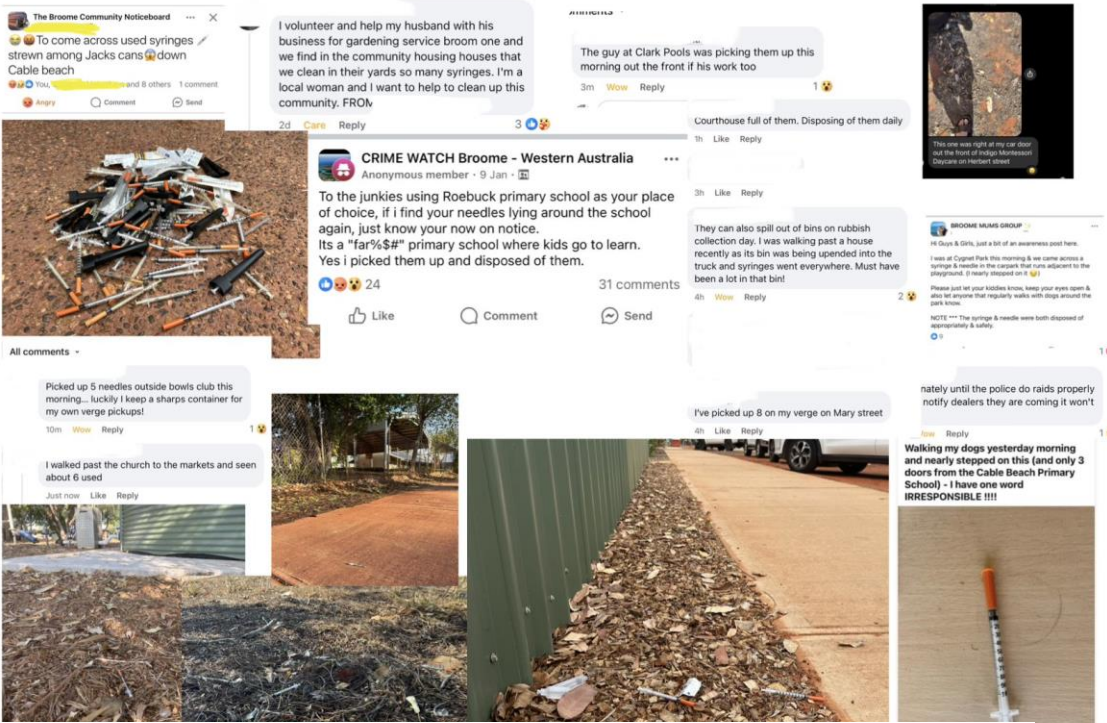
Kimberley Mental Health and Drug Service

- Sarah Mackenzie-Dodds – A/ Regional Manager Kimberley Mental Health and Drug Service (KMHDS) WACHS
- Jarrah Phillips – Community Drug Service Worker, Kimberley Community Drugs Service (KCADS) WACHS





Sharps in the Community- Setting the Scene



Broome needle and syringe exchange program confirmed after residents raise safety fears

Frustrated residents say they are finding more discarded **needles** around Broome, including at ovals and primary schools, prompting the state government to introduce the program.

26 Oct 2024 / ABC NEWS 2m read

Methamphetamine addicts left with 'nowhere to go' in the Kimberley

A criminal lawyer in the state's far north says clients with methamphetamine addiction on remand or bail have been left with no treatment options, amid concerns the drug's use in the region has reached dire proportions.

20 Oct 2024 / ABC NEWS 4m read

Judge highlights outback WA's growing meth problem while sentencing drug courier

A District Court judge says communities are being "completely and utterly destroyed" by methylamphetamine, while sentencing a Kimberley man for his role as a courier in a significant drug operation.

15 Oct 2024 / ABC NEWS 2m read



Broome NSEP – Opportunity for A Different Approach

- KCADS Values:
 - Consumers at the forefront – PWID one of our services most vulnerable population.
 - Responding to community concern.
 - Connection.
- Ability to be innovative:
 - staffing model
 - more than a BBV public health response
 - no wrong door approach.
- Intra-district partnership and collaboration.
- Respond timely to Government with an informed best practice approach that was supported by stakeholders and community.



Government of Western Australia
WA Country Health Service



Kimberley Dental Health & Drug Service

Is alcohol or drug use making you worry?

We are here to support you and your loved ones.

Kimberley Community Alcohol and Drug Service (KCADS)
Counsellors are based in Broome, Derby, Fitzroy Crossing, Halls Creek, Kununurra and surrounding communities.

You don't need a referral – just walk in, give us a call, or we can come to you.

This is a free service.

Get in touch
Kimberley Community Alcohol and Drug Service (KCADS)
Phone: 9194 2640



To provide feedback on this publication email: publiccomments@health.wa.gov.au. Alternative formats can be provided on request. © WA Country Health Service

Broome NSEP – A Different Approach



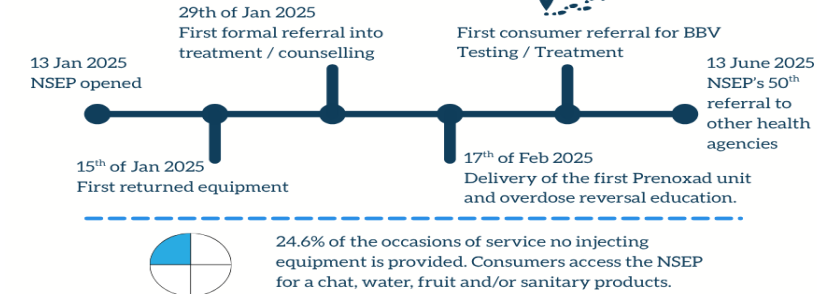
Broome NSEP – A Different Approach – The numbers



The opposite of addiction is not sobriety, its connection -
Johann Hari

Broome Needle and Syringe Exchange Program (NSEP)

The Journey so far.....



"You guys make this place, feel good. No shame, everyone need to come here!"

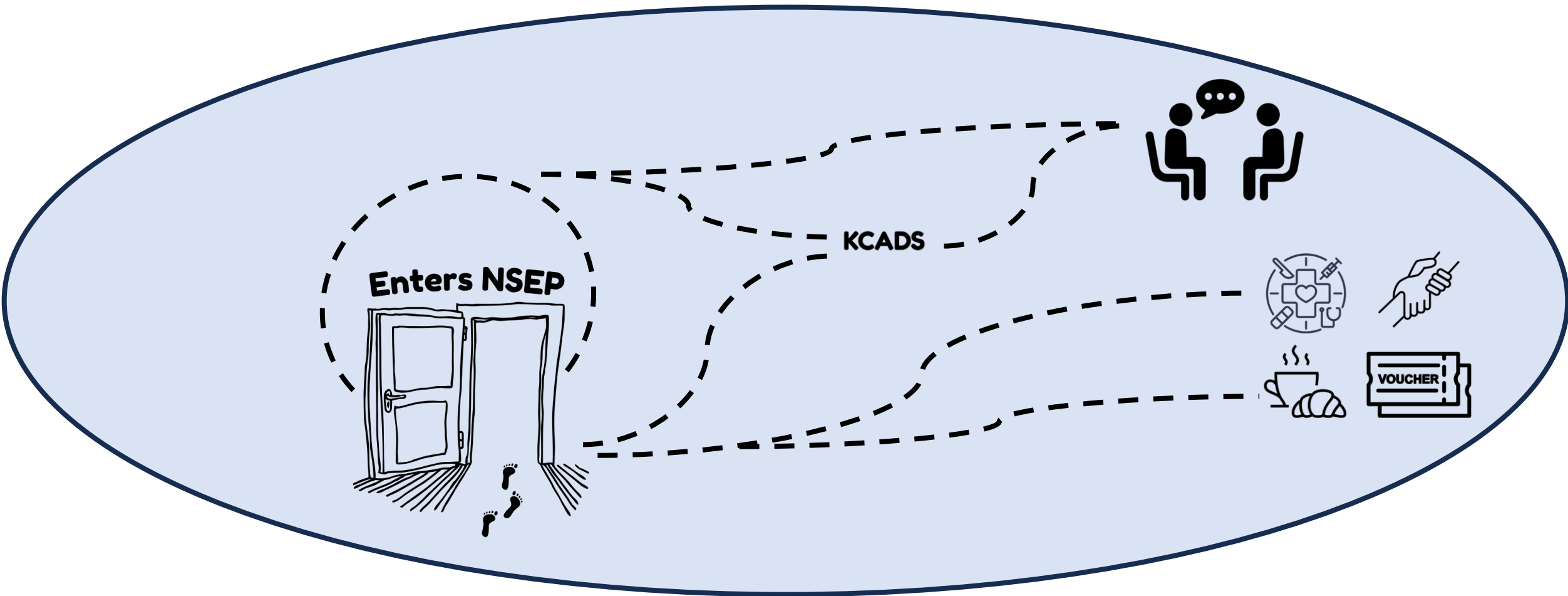


"Feels so much better, I don't feel shame in this space, at the front emergency, everyone stares, and it doesn't feel comfortable, thank you mob for this, you mob are good, feels right".

NSEP Consumer

For Information, training or questions please contact Tim Iffla - Broome NSEP Coordinator

A CLIENTS JOURNEY



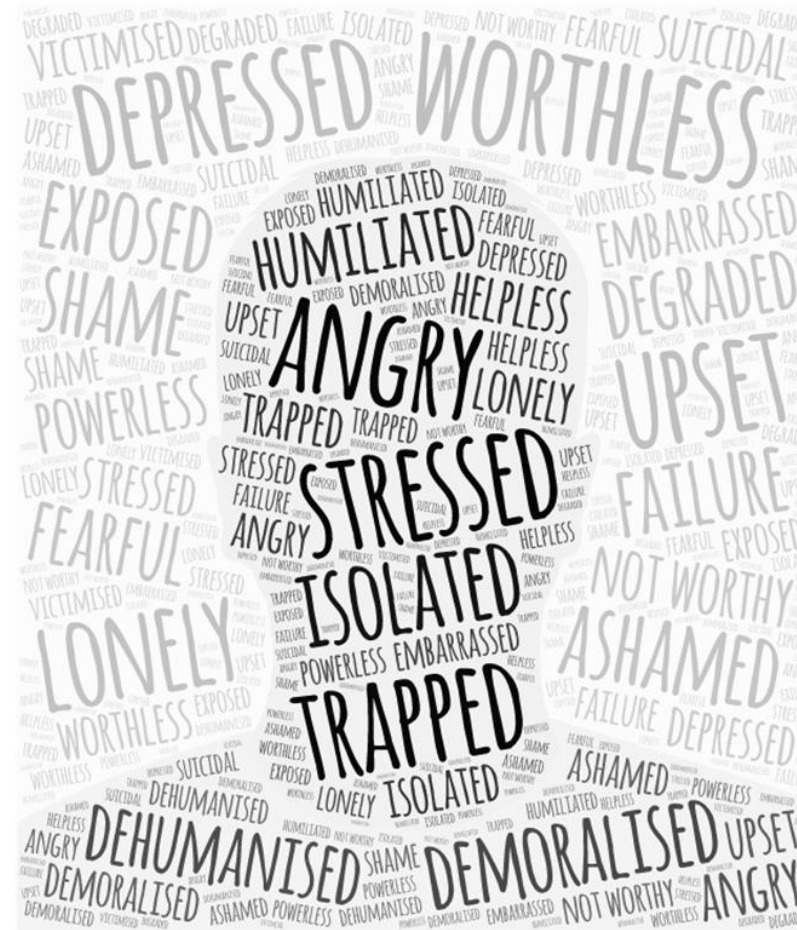
Challenging Stigma

“How are you going to deal with all the aggression?”

“Are you going to put a barrier up for staff safety?”

“Good luck with safe disposal conversations, they don’t care”

“Oh, you’ll be busy on pay day!”





Questions



Sarah Mackenzie Dodds – A/ Regional Manager
Kimberley Mental Health and Drug Service
sarah.mackenziedodds@health.wa.gov.au

Jarrah Phillips – Community Drug Service Worker,
Kimberley Community Alcohol and Drugs Service
jarrah.phillips@health.wa.gov.au