



LA ROCHE POSAY  
LABORATOIRE DERMATOLOGIQUE

# ANTHELIOS KA+ SUNSCREEN SPF50+

**CAN AID IN THE PREVENTION OF SOLAR KERATOSIS  
AND MAY REDUCE THE RISK OF SOME SKIN CANCERS**



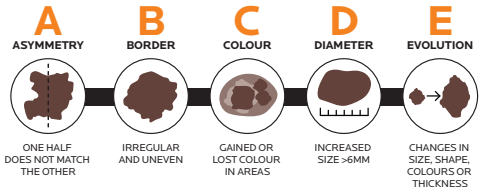
- **SPF50+ VERY HIGH**  
BROAD-SPECTRUM  
UV PROTECTION
- **NO WHITE MARKS**
- **FRAGRANCE-FREE**
- **MELT-IN CREAM**
- **DERMATOLOGICALLY TESTED**  
FOR SENSITIVE SKIN
- **NIACINAMIDE & PANTHENOL**  
TO HYDRATE & REPAIR  
SKIN MOISTURE BARRIER

## SOLAR KERATOSIS\*



**SOLAR KERATOSIS** can appear as persistent raised, rough, dry and scaly patches or lesions on areas of the skin with high sun exposure (face, hands, ears, lips.)

**CHECK YOUR MOLES.** CHECK YOUR SKIN REGULARLY FOR SUSPICIOUS MOLES USING THE **ABCDE** METHOD. PAY ATTENTION TO THE BELOW CHANGES.



Moles can appear in different shapes and colours. If you notice a suspicious lesion or change, always consult a healthcare professional.



**SCAN FOR INFO**  
OR SPEAK TO YOUR HEALTHCARE PROFESSIONAL TO LEARN MORE OR IF YOU SUSPECT YOU MAY HAVE SOLAR KERATOSIS

Follow us to learn about @larocheposayaunz

\*Image displayed does not represent or depict a real person. ALWAYS READ THE LABEL AND FOLLOW THE DIRECTIONS FOR USE. Apply 20 minutes before sun exposure. Sunscreen is only one part of sun protection so wear protective clothing and seek shade. Avoid prolonged sun exposure. Reapply every 2 hours and after swimming, towelling and perspiring in accordance with direction. THIS INFORMATION IS GENERAL IN NATURE AND IS PROVIDED FOR INFORMATIONAL PURPOSES ONLY. IT IS NOT INTENDED TO BE A SUBSTITUTE FOR PROFESSIONAL MEDICAL ADVICE AND SHOULD NOT BE RELIED ON AS HEALTH OR PERSONAL ADVICE. PLEASE CONSULT A HEALTHCARE PROFESSIONAL FOR ADVICE RELEVANT TO YOUR CIRCUMSTANCES. IMAGES DISPLAYED DO NOT REPRESENT OR DEPICT REAL PERSON/PERSONS.

LA ROCHE-POSAY  
LABORATOIRE DERMATOLOGIQUE

**N°1** DERMATOLOGIST  
RECOMMENDED  
SKINCARE BRAND  
WORLDWIDE\*

# CICAPLAST BAUME B5+

## MULTI-REPAIRING HYDRATING BALM



**CICAPLAST BAUME B5+** Balm Cream is a multi-repairing hydrating balm for dry skin with a rich nourishing texture that can be used for multiple purposes on adults, children and babies from 3+ months and is dermatologically tested for sensitive skin.

It is powered by a unique prebiotic complex called **Tribioma** to rebalance the skin microbiome, combined with **Madecassoside** to soothe the skin and 5% **Vitamin B5** (Panthenol) to repair the skin moisture barrier.



It has a **rich nourishing texture** suitable for **sensitive skin** including skin concerns such as **mild sunburnt skin, post procedure**, skin discomfort, dry to very dry xerosis-prone skin, dry, mild eczema-prone skin, post superficial irritations, visible redness and visibly rough areas.

Hypoallergenic, fragrance, lanolin and paraben-free, Cicaplast Baume B5+ is **suitable for use on 15 skin concerns** and is recommended for the whole family.



**SCAN FOR INFO**  
OR SPEAK TO  
YOUR HEALTHCARE  
PROFESSIONAL

**DIRECTIONS FOR USE:** APPLY TWICE DAILY TO CLEAN, DRY SKIN. CAN BE APPLIED GENEROUSLY OR AS REQUIRED TO BODY, FACE AND LIPS. AVOID THE EYE CONTOUR AREA. DO NOT APPLY TO BROKEN SKIN.

Follow us to learn about @larocheposayaunz

\*Survey conducted among the skincare market carried out by APLUSA and other partners between January 2023 and May 2023, involving dermatologists in 34 countries, representing more than 80% of the worldwide GDP. ^Scientific study on 54 subjects. THIS INFORMATION IS GENERAL IN NATURE AND IS PROVIDED FOR INFORMATIONAL PURPOSES ONLY. IT IS NOT INTENDED TO BE A SUBSTITUTE FOR PROFESSIONAL MEDICAL ADVICE AND SHOULD NOT BE RELIED ON AS HEALTH OR PERSONAL ADVICE. PLEASE CONSULT A HEALTHCARE PROFESSIONAL FOR ADVICE RELEVANT TO YOUR CIRCUMSTANCES. CAUTION: Do not swallow. Keep out of reach of children and babies. In case of contact with eyes, rinse them immediately.