

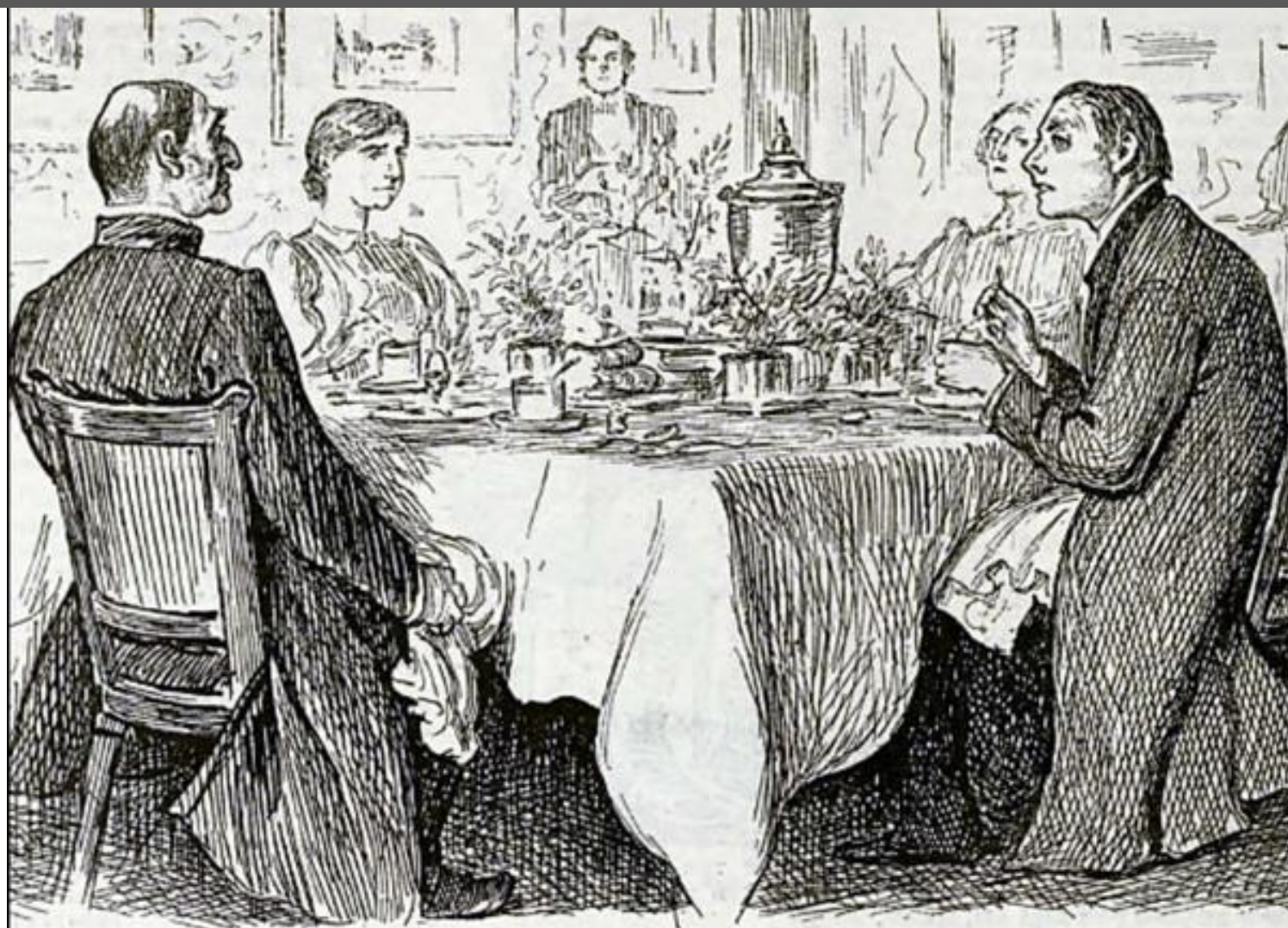


*Agility/Medical Management in
the New World*

Professor Des Gorman MD PhD

The first of
seven
questions:

How well do the Australian and New Zealand health systems serve their communities?



TRUE HUMILITY.

Right Reverend Host. "I'M AFRAID YOU'VE GOT A BAD EGG, MR. JONES!"

The Curate. "OH NO, MY LORD, I ASSURE YOU! PARTS OF IT ARE EXCELLENT!"

The second of
seven
questions:

*Are the Australian and New Zealand
health systems fit for current and
future purpose?*



The third of
seven
questions:

If the Australian and New Zealand health systems are increasingly not fit for current and future purpose, what underpins this recidivism?





The fourth of
seven
questions:

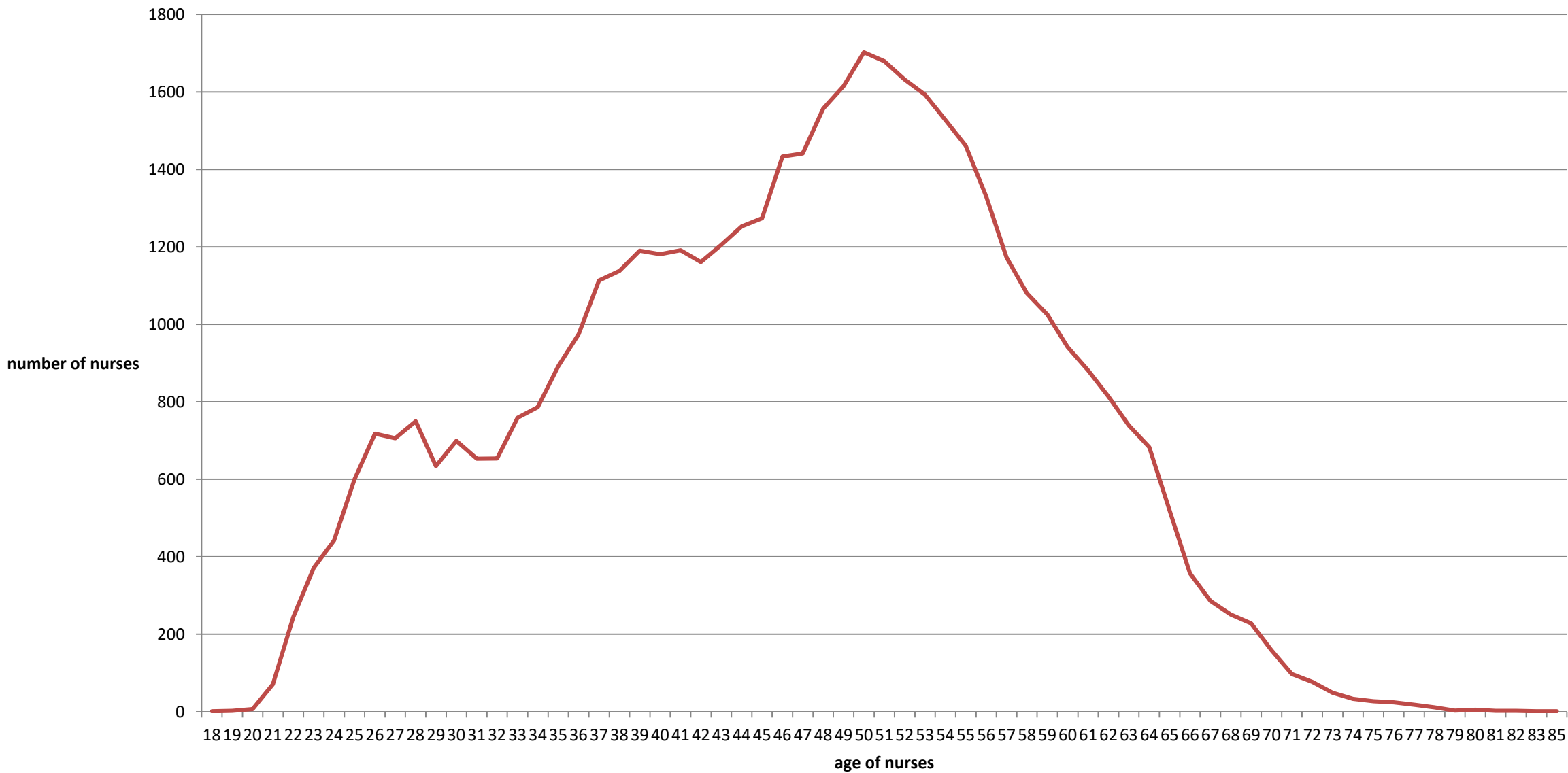
Why are our health systems neither sustainable nor affordable, and why are they not ideally configured or operated to meet either current or future need?

Eurostat	Cost barriers	Travel barriers	Waiting time barriers	Non-health factors	Total unmet need - % pop
Sweden	0.5	0.2	1.2	11.7	13.6
France	2.1	0.1	0.5	3.5	6.2
Germany	0.6	0.1	0.8	3.5	6
UK	0.1	0.1	1.4	1.5	3.1
Switzer-land	1	0	0.1	1.2	2.3
Nether-lands'	0.1	0.1	0.3	1.1	1.6

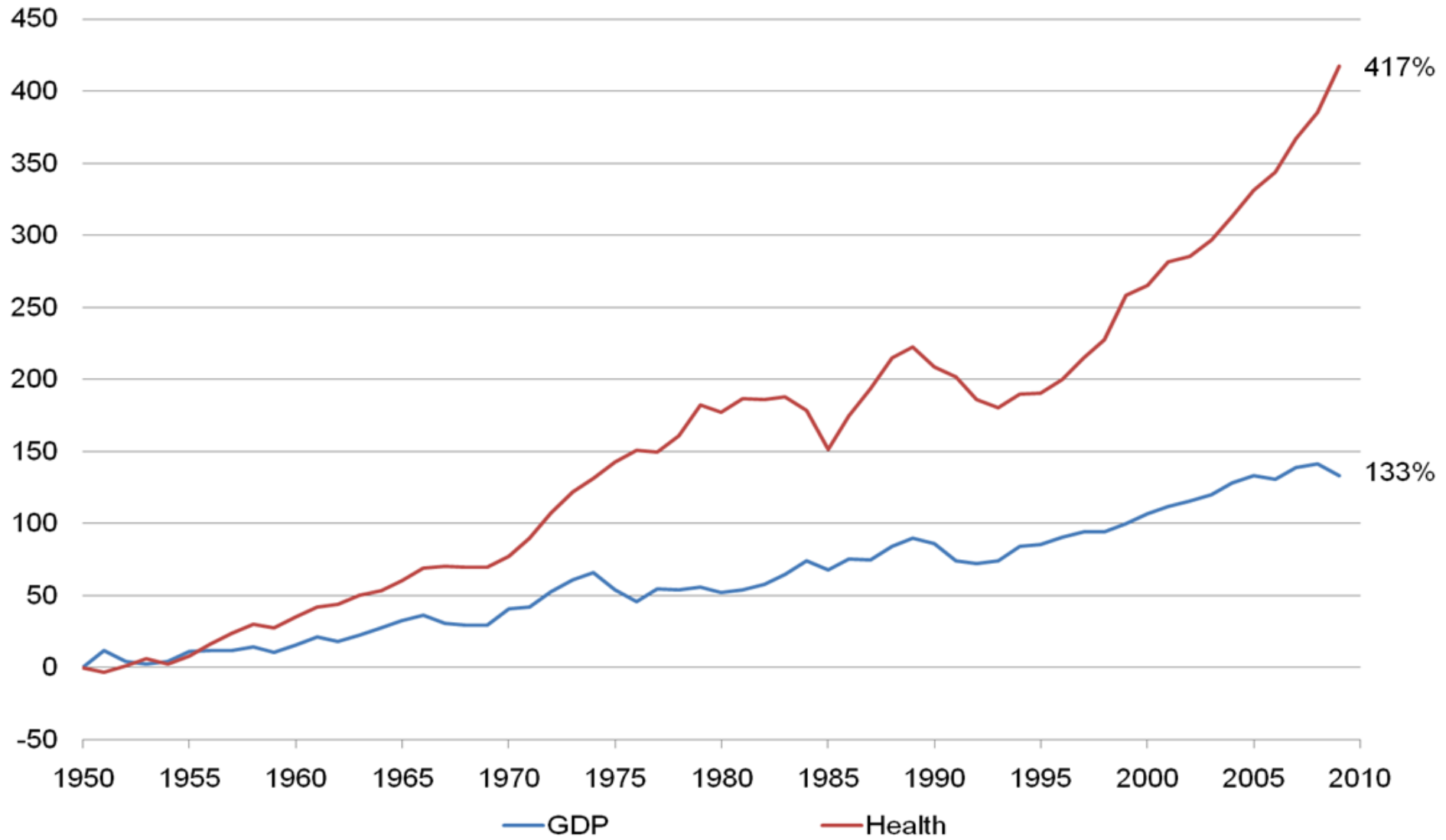


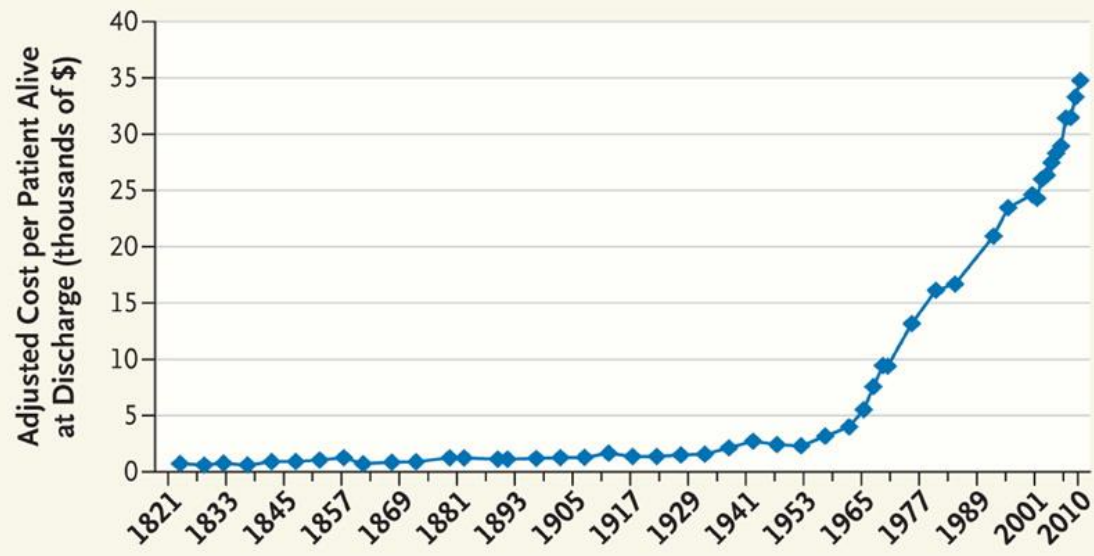
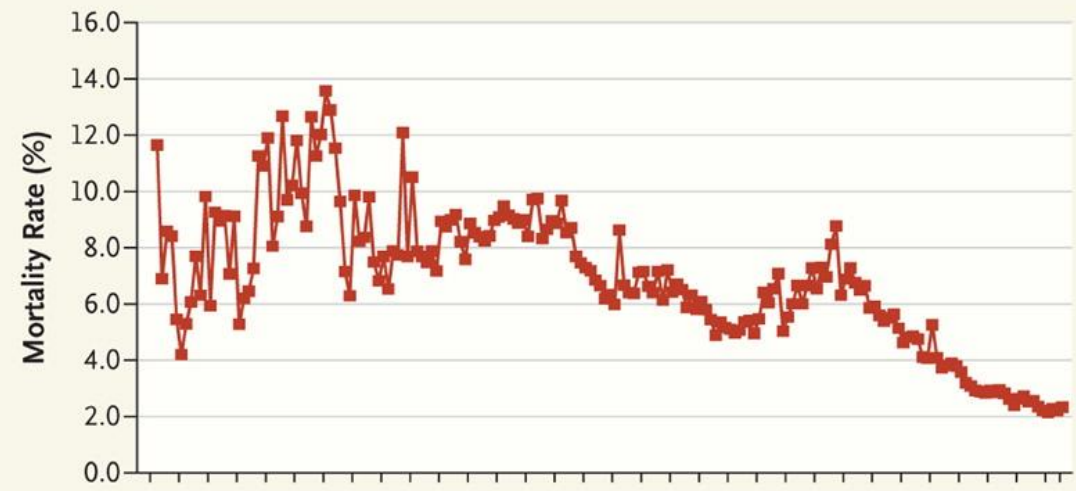


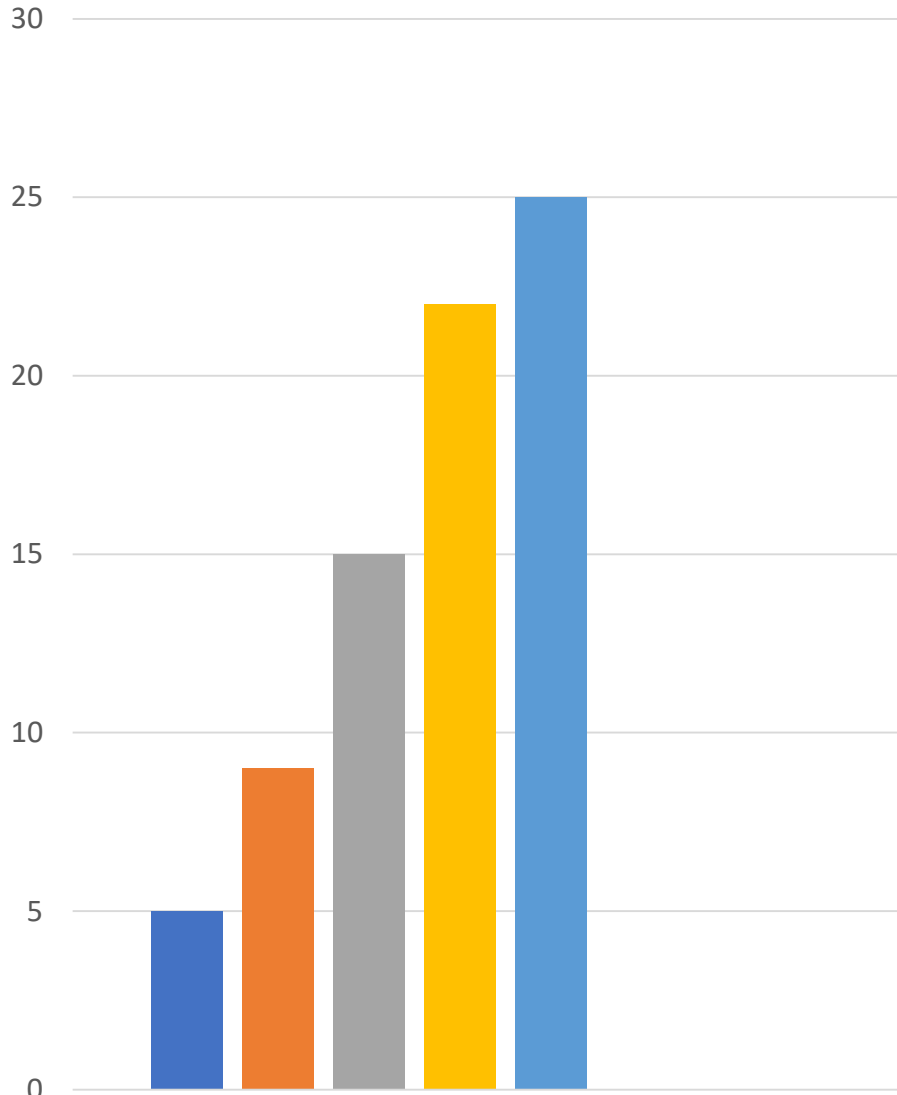
Number and age of nurses in workforce in October 2011



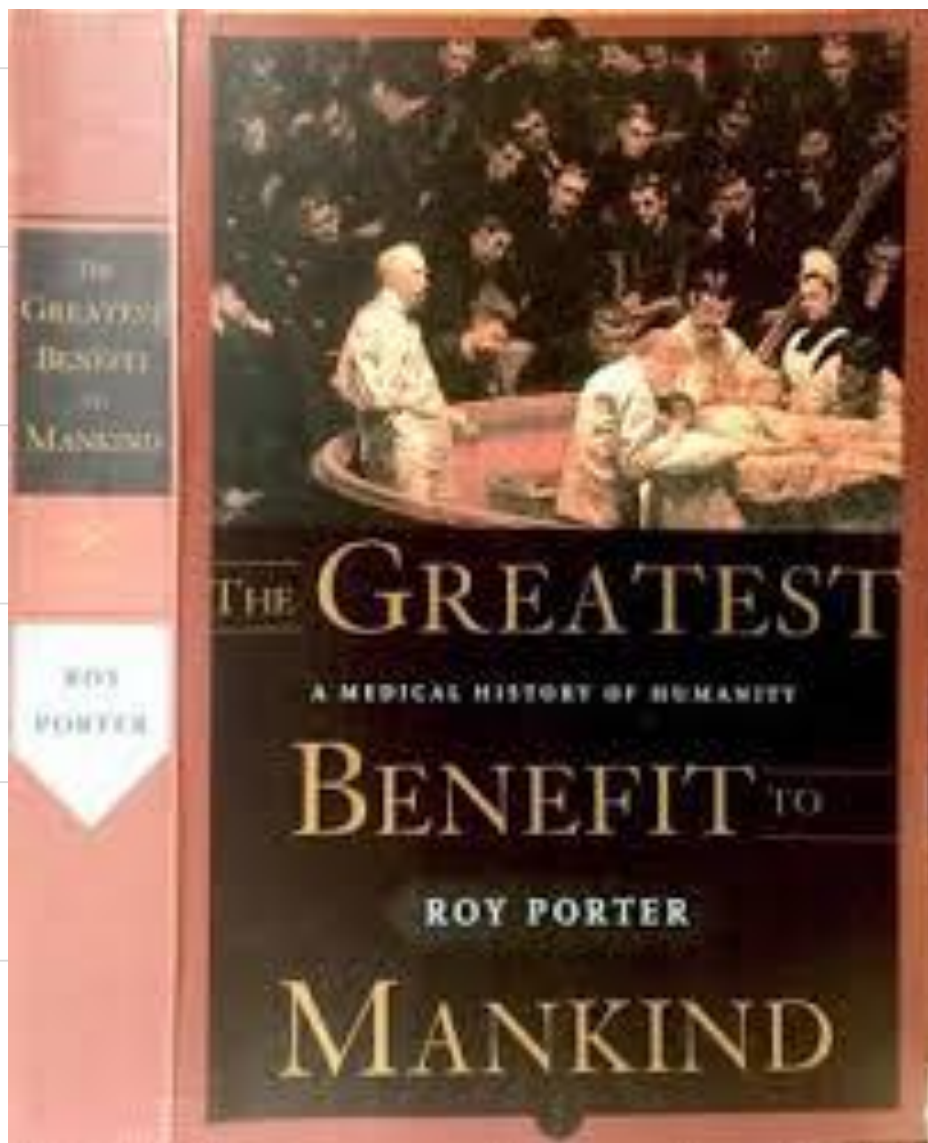
Cumulative % change







Percentage older than
65



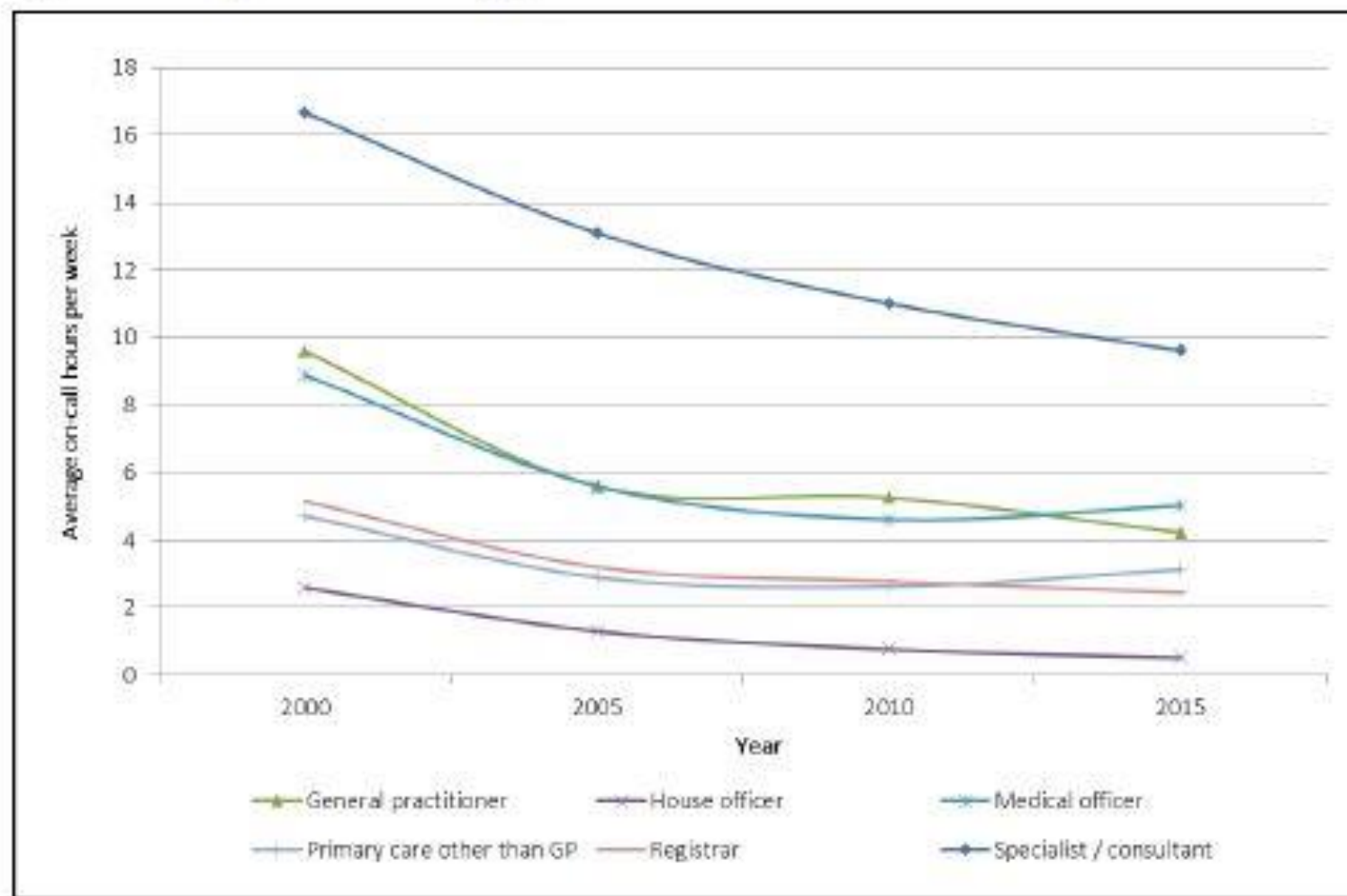
■ 1927 ■ 1977 ■ 2017 ■ 2057 ■ 2097

The fifth of
seven
questions:

*Just how weak are our processes of
commissioning, purchasing and
funding health services?*



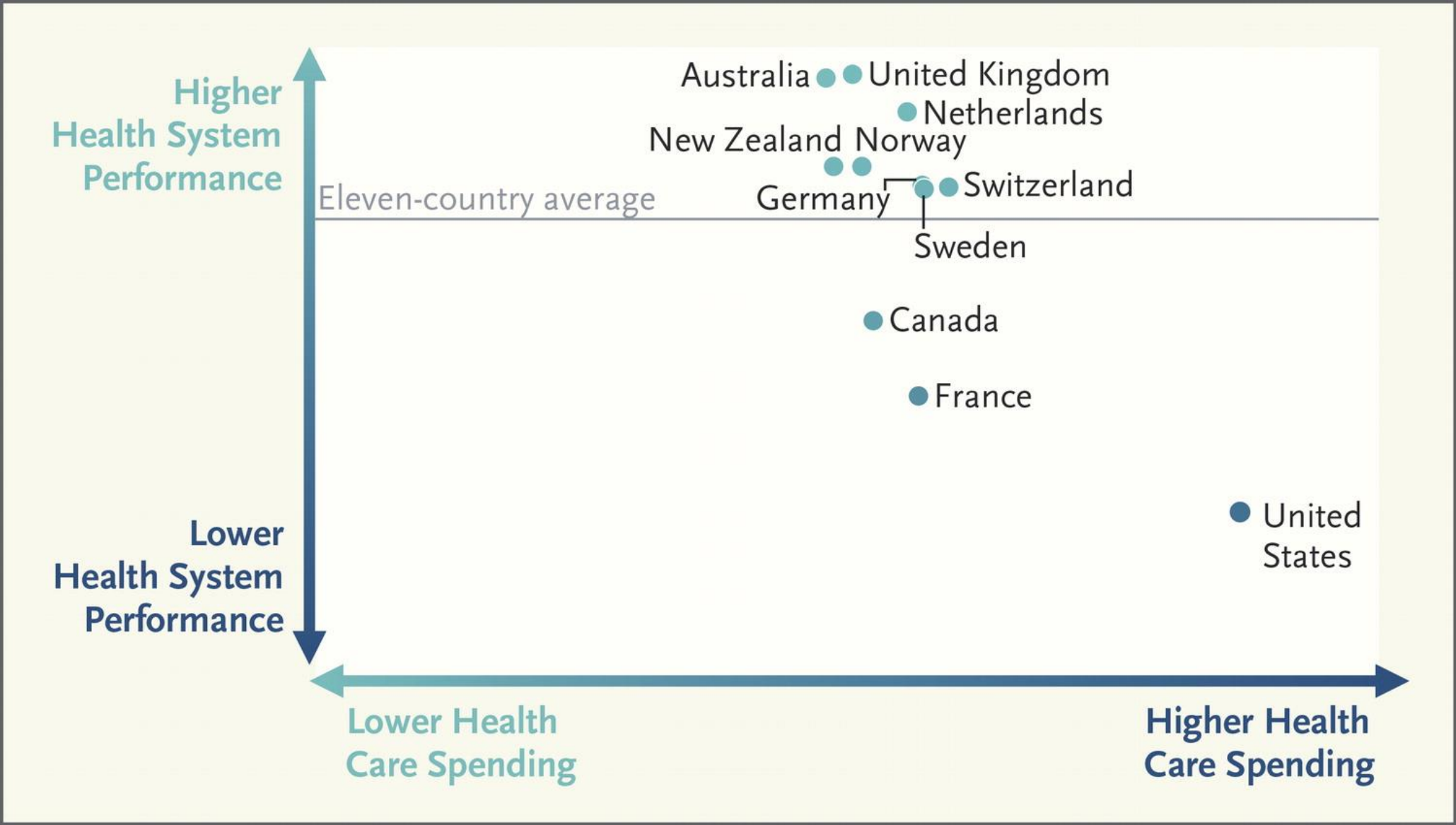
Figure 9: Average on-call¹ hours, by work role at main work site



¹ On-call hours are defined as hours when the doctor was on call but not actually working.

The sixth of
seven
questions:

*Just how poorly do we plan health
services?*



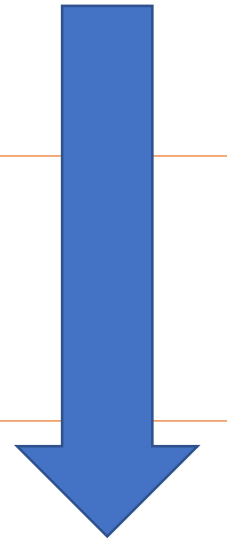
Eurostat	Waiting time barriers	Doctors per 1,000 pop. (ratio of OECD mean)	Total unmet need (% pop)
Sweden	1.2	1.1	13.6
France	0.5	1.1	6.2
Germany	0.8	1.1	6
UK	1.4	0.7	3.1
Switzerland	0.1	1.2	2.3
Netherlands	0.3	1.2	1.6



Available workforce, IT and capital

Model of care and service configurations

Service delivery



The seventh and
final question:

*So what needs to happen if the
second version of Auntie's story is to
become commonplace?*