



PAVING THE PATHWAY TO LONG COVID
INEQUITY OF COVID RECOVERY FOR RURALLY ISOLATED MAORI COMMUNITIES (RIMC)

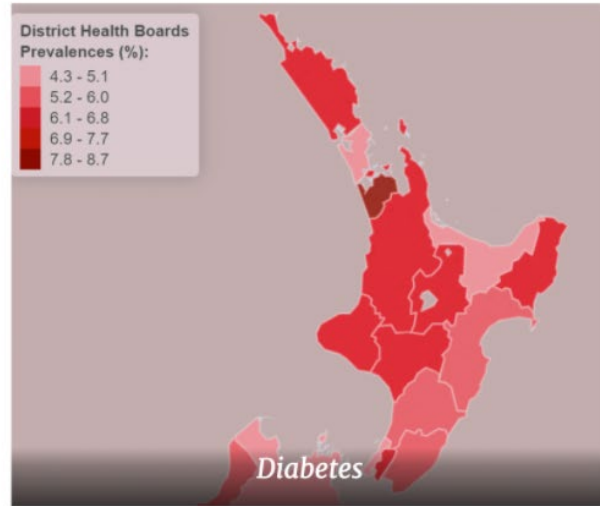
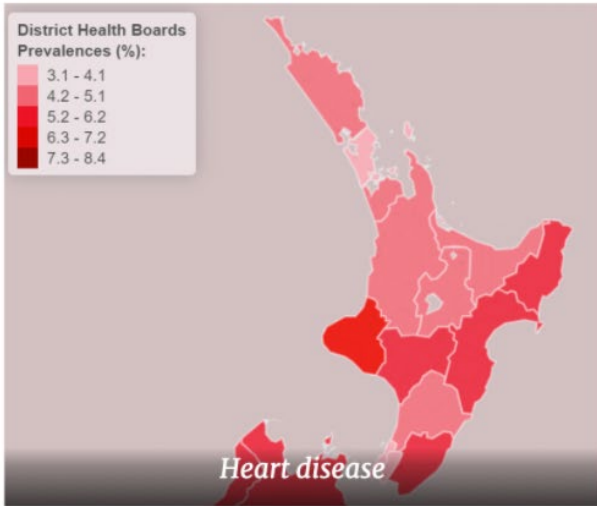
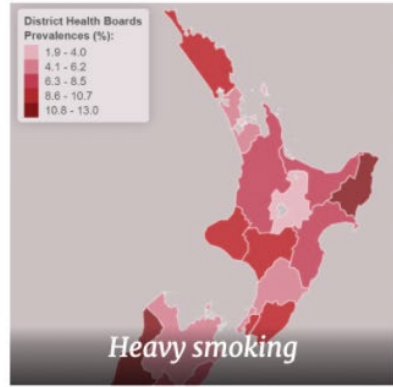
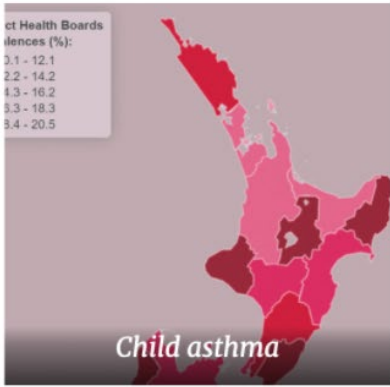
COVID HOSPITALISATIONS AND CO-MORBIDITIES



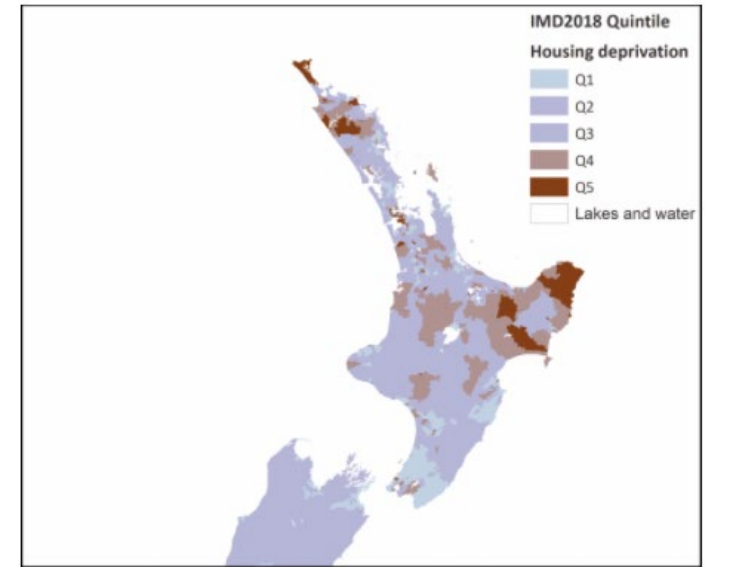
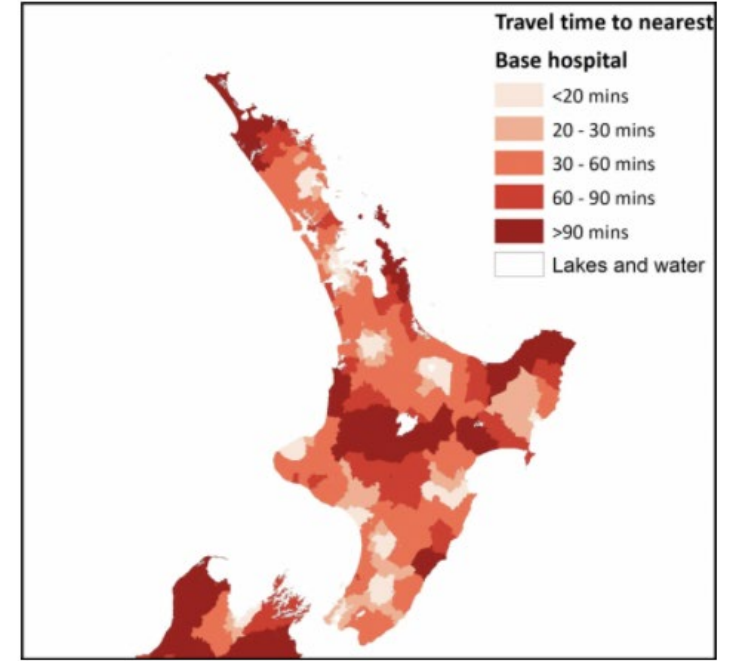
Sources: Guillaume Beltramo, Jonathan Cottenet, Anne-Sophie Mariet, Marjolaine Georges, Lionel Piroth, Pascale Tubert-Bitter, Philippe Bonniaud, Catherine Quantin
European Respiratory Journal 2021

Prevalence of Selected Underlying Health Conditions Among Patients with Coronavirus Disease 2019 - 2020.US MMWR Morb Mortal Wkly Rep 2020;69:382–386.

Covid Risk and Matakaoa



Covid risk factors by DHB highlight the specific risk sitting around Tairāwhiti



SOCIAL DETERMINANTS OF HEALTH

“The Crown education system had much lower expectations for Ngati Porou than Pakeha for nearly 100 years after 1867. It sought to prepare most Maori children for manual labouring occupations only... A Crown study in the 1990s concluded that the educational qualifications of East Coast residents lagged well behind those of other New Zealanders. This has restricted the economic and life Opportunities” Waitangi Tribunal

Education
Access & Quality

Healthcare
Access & Quality

“I think we have now some quite good evidence that racism at a range of levels does determine access to experience of and outcomes in the health care system.” – DG HEALTH

Economic
Stability

Neighborhood
&
Built Environment

“Maori are four times more likely to live in overcrowded housing conditions than people of European heritage. These figures above forcefully lead to the conclusion that significant targeted action is required urgently to meet the current housing needs of Maori as a means to both promote human rights and restore Te Tiriti rights.” UN Rapporteur to the Rights of Adequate Housing

Housing Instability

Housing Quality

“By the middle of the twentieth century economic stagnation was a serious problem on the East Coast. Many industries which had previously provided employment for Ngati Porou had closed by the late 1960s including all of the dairy factories, among them the Ngati Porou Company dairy factory, and all but one of NT the freezing works. By the early 1990s the East Coast had the highest unemployment rate of any region in New Zealand, and had become one of its most deprived in socioeconomic terms.” Waitangi Tribunal

Social
&
Community Context

“Urbanization has resulted in a level of cultural shock within Maori communities and disrupted Maori kinship structures” Prof G Smith



Pathway to Hospitalisation for Rurally Isolated Māori Communities (RIMC)

Racist Healthcare System

- Mistrust in health system
- Undervaccination
- Low health *SYSTEM* literacy
- Low whānau literacy (of HCP)
- High risk for misinformation

IG UNDERINVESTMENT IN EDUCATION

- Lack of access to science/research
- Inappropriate/extractive health research > policy
- Low engagement with health services
- Low navigability of health systems

POOR HEALTH INFRASTRUCTURE

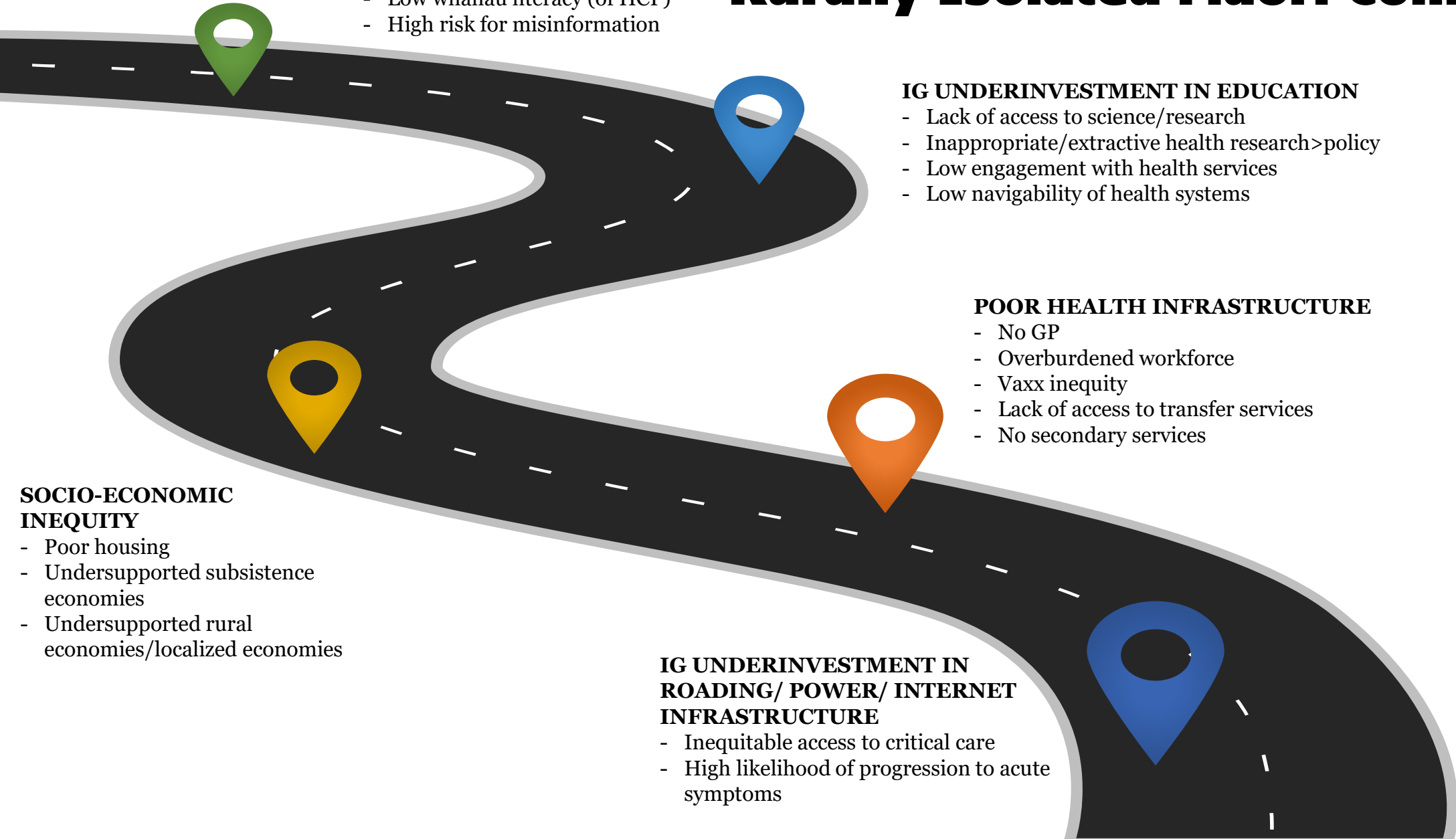
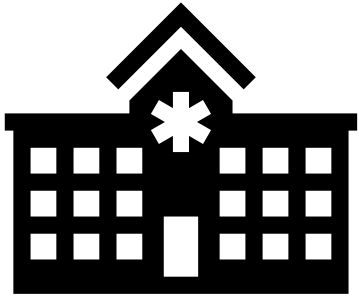
- No GP
- Overburdened workforce
- Vaxx inequity
- Lack of access to transfer services
- No secondary services

IG UNDERINVESTMENT IN ROADING/ POWER/ INTERNET INFRASTRUCTURE

- Inequitable access to critical care
- High likelihood of progression to acute symptoms

SOCIO-ECONOMIC INEQUITY

- Poor housing
- Undersupported subsistence economies
- Undersupported rural economies/localized economies





Colonial Racism in Health Care

the hallmarks

- Individualised, not collective
- Dis-integrated, not collaborative/integrated
- Capitalist
- Extractive
- Inequitable
- Centralised, not localised

INVESTING IN OUR STRENGTHS

**Whanau as healthcare
co-providers**



Household needs

Our team of kaimanaaki are here to provide you with all of your household needs, so that you can rest and focus on your recovery. This includes:

- shopping for groceries
- delivery of medication
- firewood delivery
- water tank refill
- support with income and employment.



Rural care services

We recognise there are some types of support that are unique to our whanau living rurally, and our rural care team is equipped to help out with these services, which include:

Household waste removal

Please double bag your household waste – include recycling, and break up and bag any boxes.

Animal care services

Moving stock, feeding animals, fixing fences.



Whanau support

Isolating together as a whanau can come with its own challenges for adults and children in the household. It's important to look after your relationships and have support for when things get stressful. We are able to provide a wide range of services to help you come through your isolation with your relationships intact. This may include:

Relationship counselling

Matauranga Maori centred approaches to looking after your relationships in the whanau.

Tikanga services

Zoom karakia, wananga, etc.

Education support

Picking up and dropping off homework etc for children, liaising with schools etc.

Virtual childcare

Online tutors who keep your tamariki engaged with online resources and games.

ADDRESSING THE INEQUITY OF LONG COVID

Support for health system navigators/advocates

Micro-credentialing & resourcing of rural community care workers to alleviate burden on the rural health workforce

Re-investment in RIMC that recognises the role of longstanding underinvestment/extraction

Address the DRIVERS of Long Covid

Work ALONGSIDE RIMC to develop access pathways to secondary services & related issues