

Impacts of Long COVID in Aotearoa New Zealand

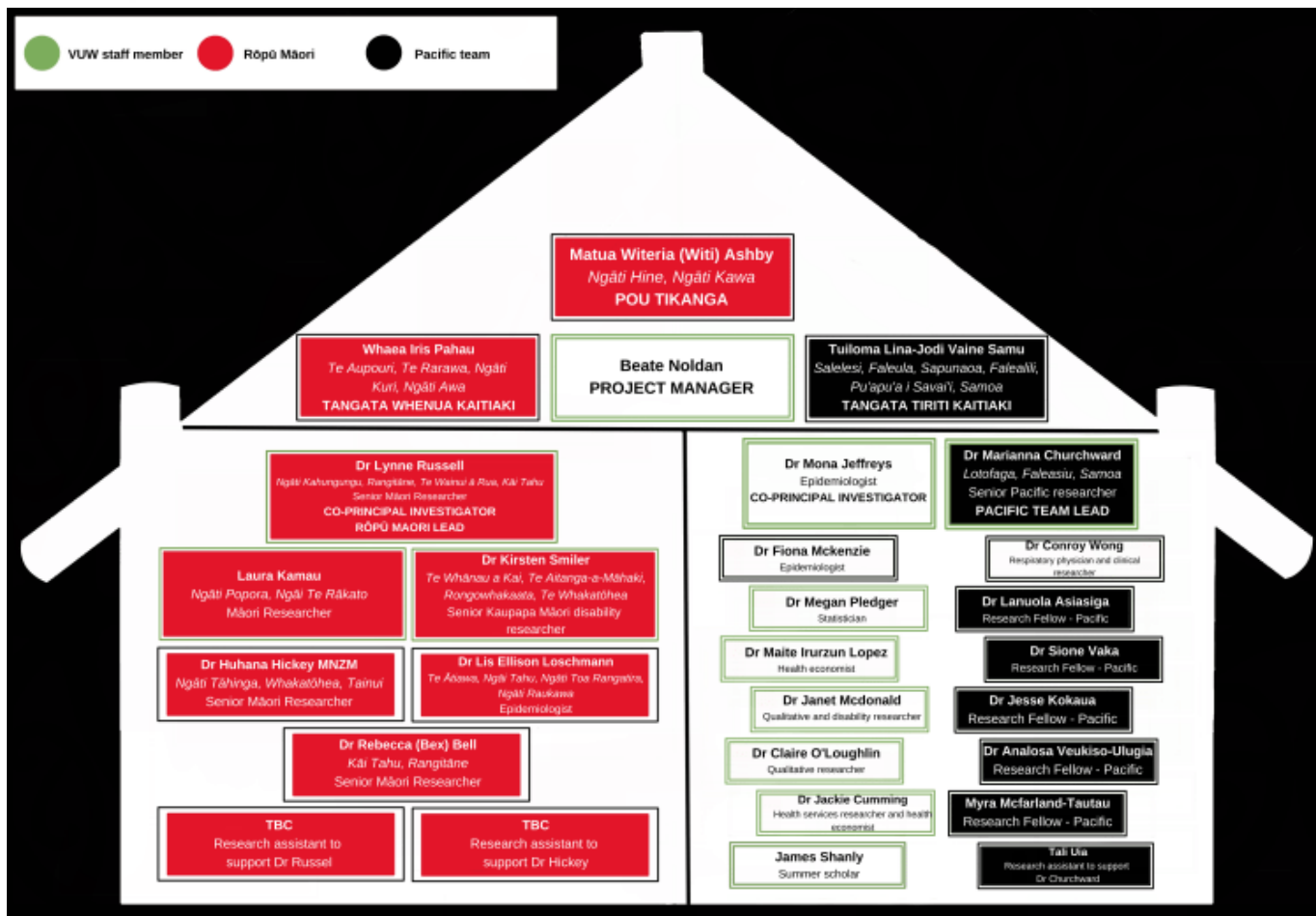


IMPACTS OF COVID-19 IN AOTEAROA
NGĀ KAWEKAWE O MATE KORONA



IMPACTS OF COVID-19 IN AOTEAROA

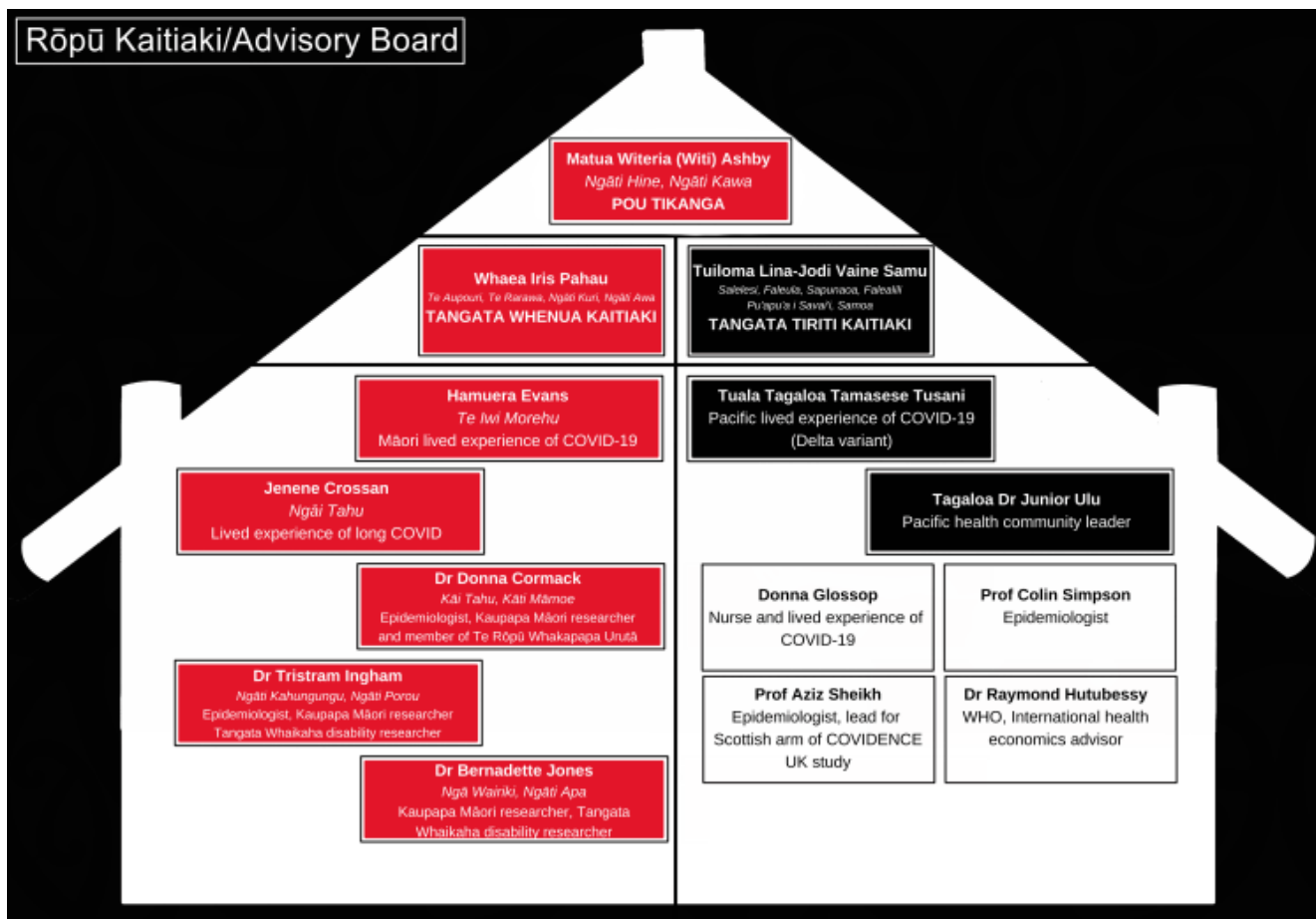
NGĀ KAWEKAWE O MATE KORONA





IMPACTS OF COVID-19 IN AOTEAROA

NGĀ KAWEKAWE O MATE KORONA





IMPACTS OF COVID-19 IN AOTEAROA NGĀ KAWEKAWE O MATE KORONA

- People in Aotearoa New Zealand
 - Had COVID-19 before Dec 2021
 - Aged 16 or over
 - Sent invitation letter via MOH
 - Sent SMS via MOH
- Online surveys, in depth interview or both
- Surveys are at covid.aotearoa.com
 - 1,000 completed some or all
 - Preliminary results from 373 people

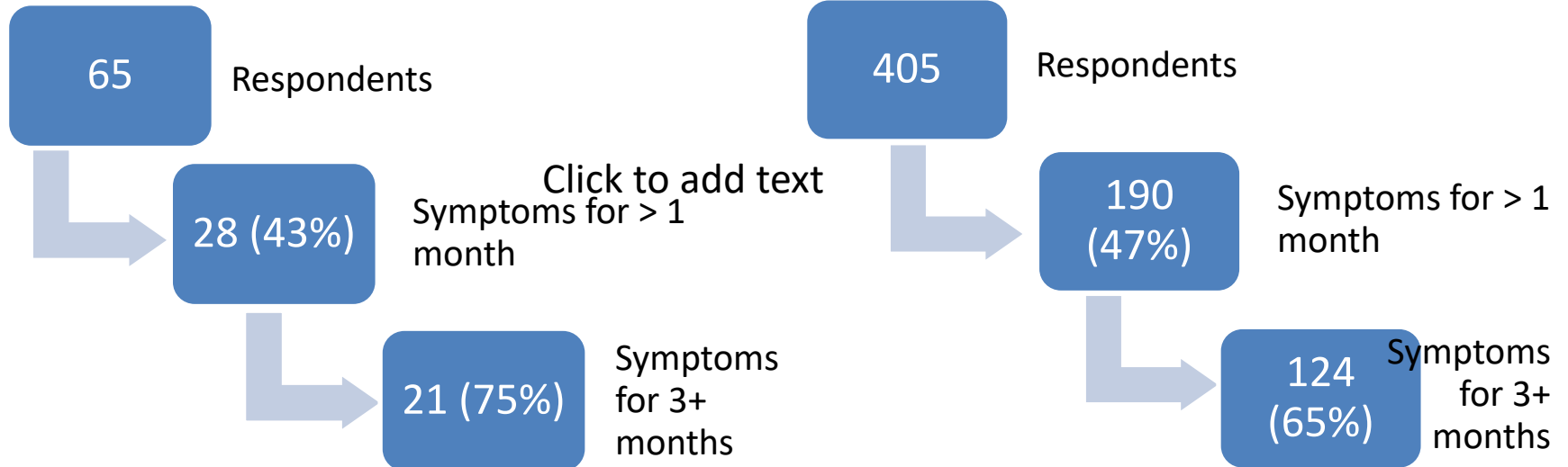


IMPACTS OF COVID-19 IN AOTEAROA

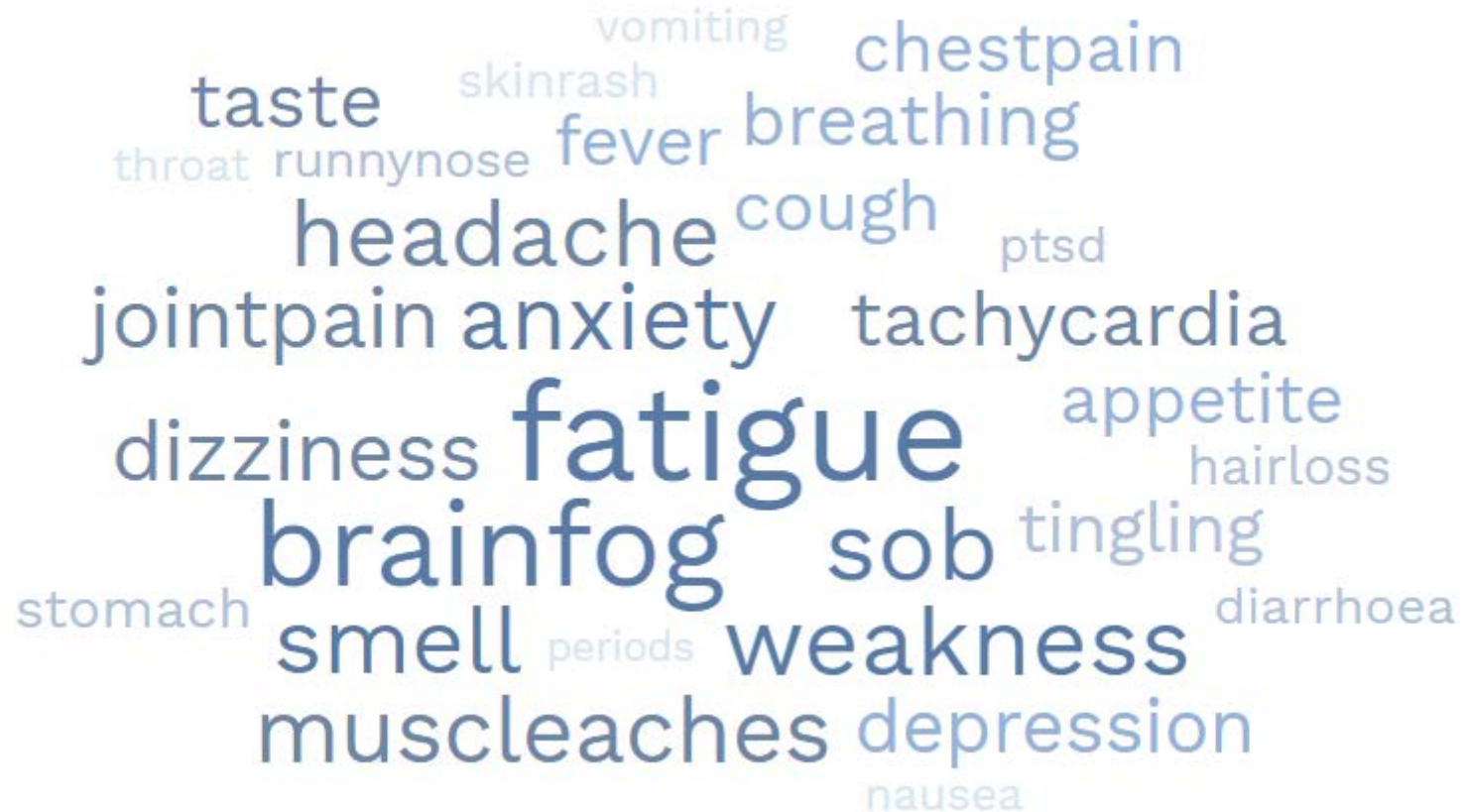
NGĀ KAWEKAWE O MATE KORONA

Tāngata Whenua

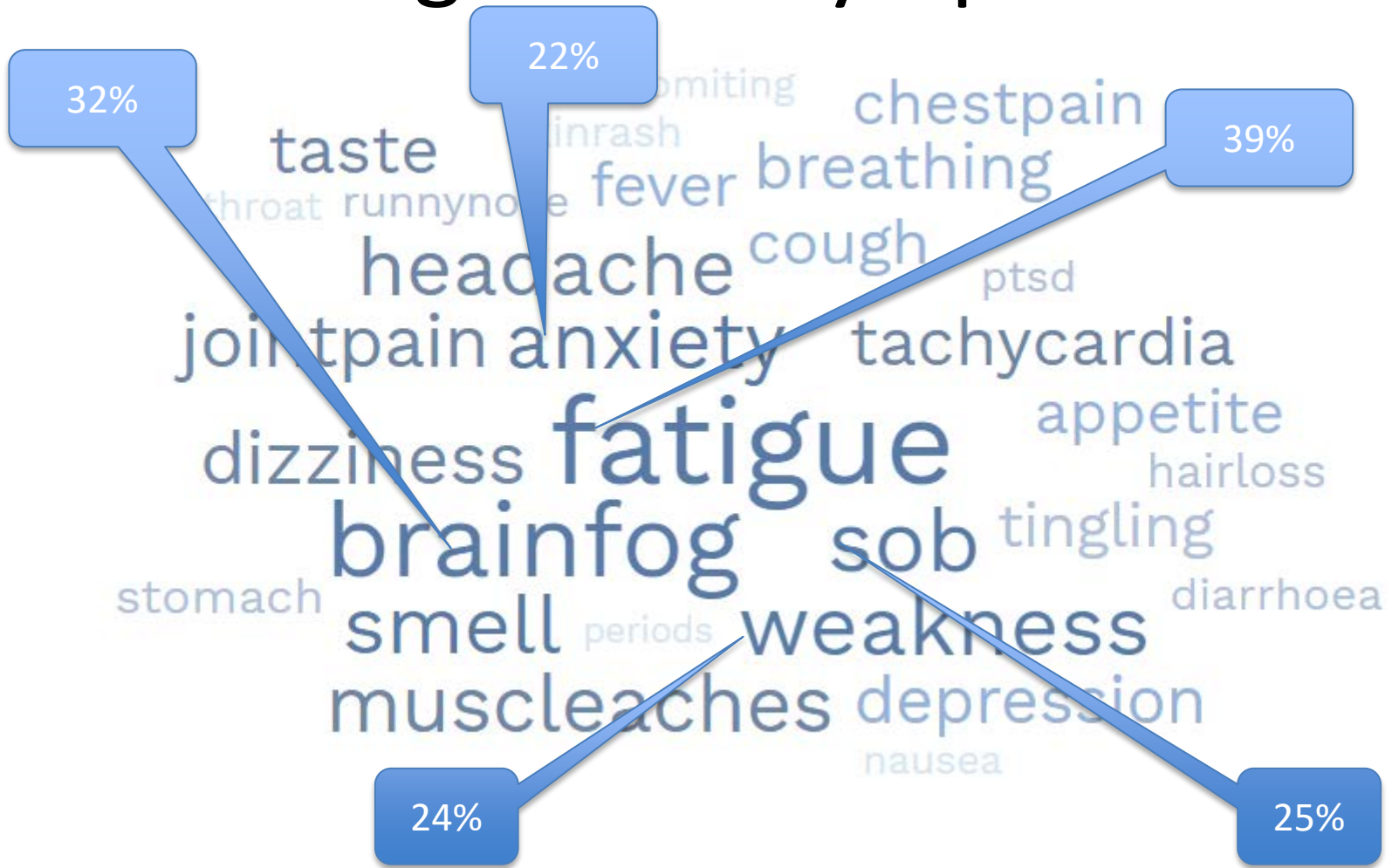
Tāngata Tiriti



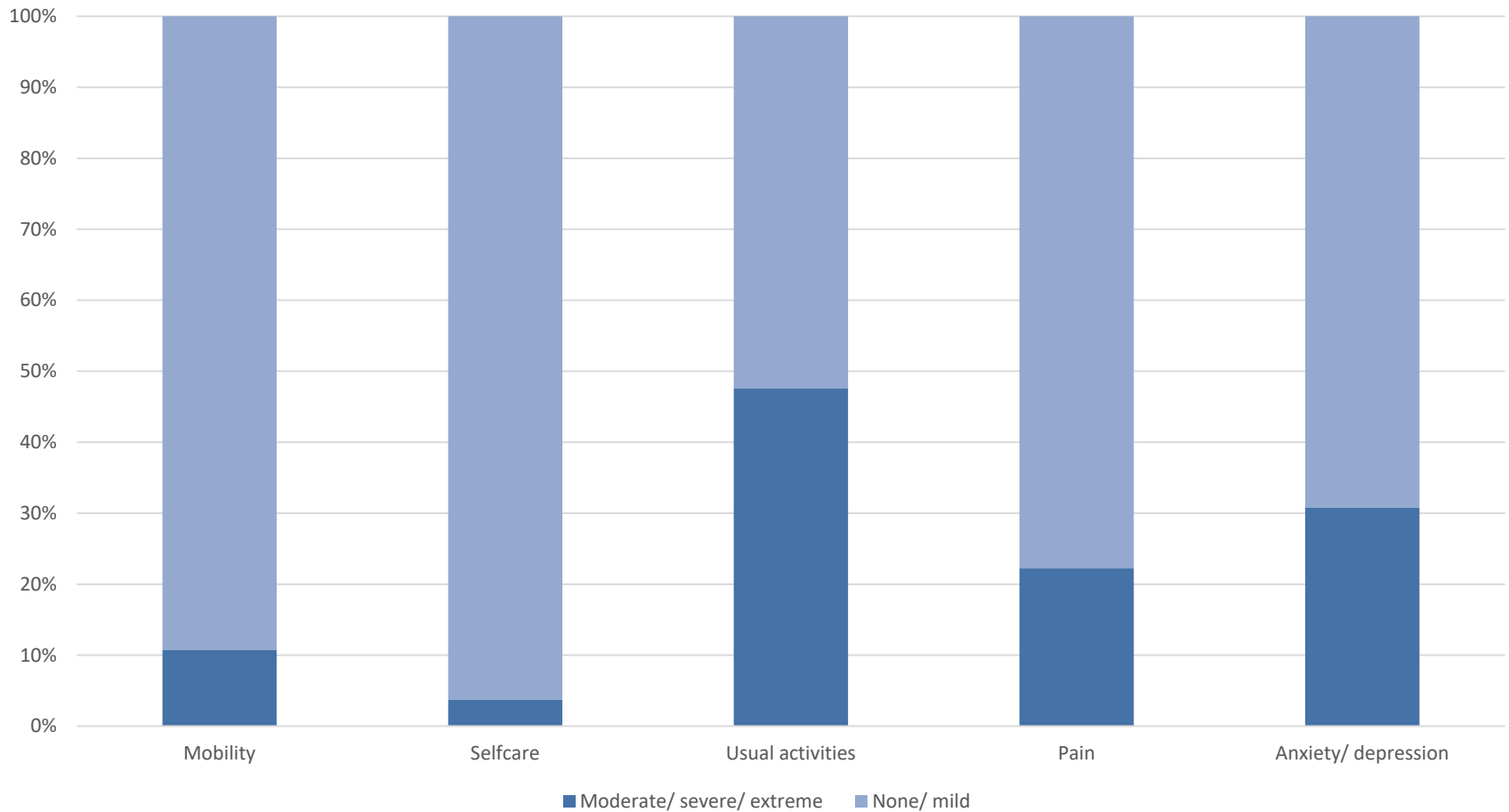
Long COVID Symptoms



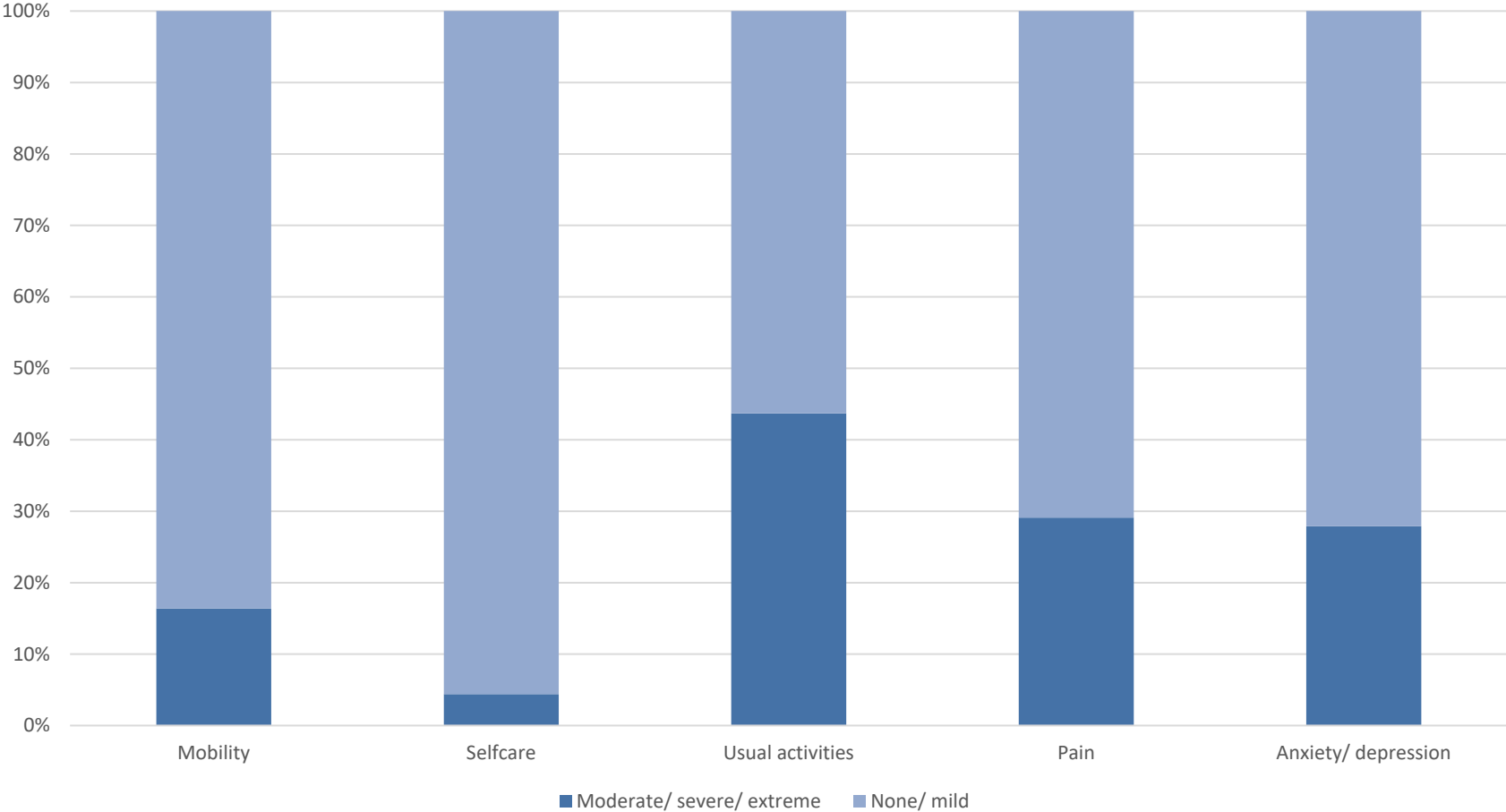
Long COVID Symptoms



Impact on Daily Life: Māori



Impact on Daily Life: non-Māori



Challenges for Māori with Long COVID

I did not feel understood (43%)

I did not know when it would end (61%)

My doctor thought I was still contagious, even months later (18%)

My doctor didn't recommend or provide wrap around support (32%)

I was scared and unsure what to do next (52%)

I did not feel listened to (48%)

My doctor did not refer me to a specialist (35%)

My specialist referral was not accepted (13%)

My doctor didn't know what to do next (32%)

I didn't know who to ask for help or support (52%)

I cannot get good information about vaccines for people with long COVID (50%)

Challenges for non-Māori with Long COVID

I did not feel understood (52%)

I did not know when it would end (76%)

I asked for help but did not get any help or support (32%)

My doctor thought I was still contagious, even months later (8%)

My doctor didn't recommend or provide wrap around support (49%)

I did not feel listened to (44%)

I was scared and unsure what to do next (42%)

My doctor did not refer me to a specialist (34%)

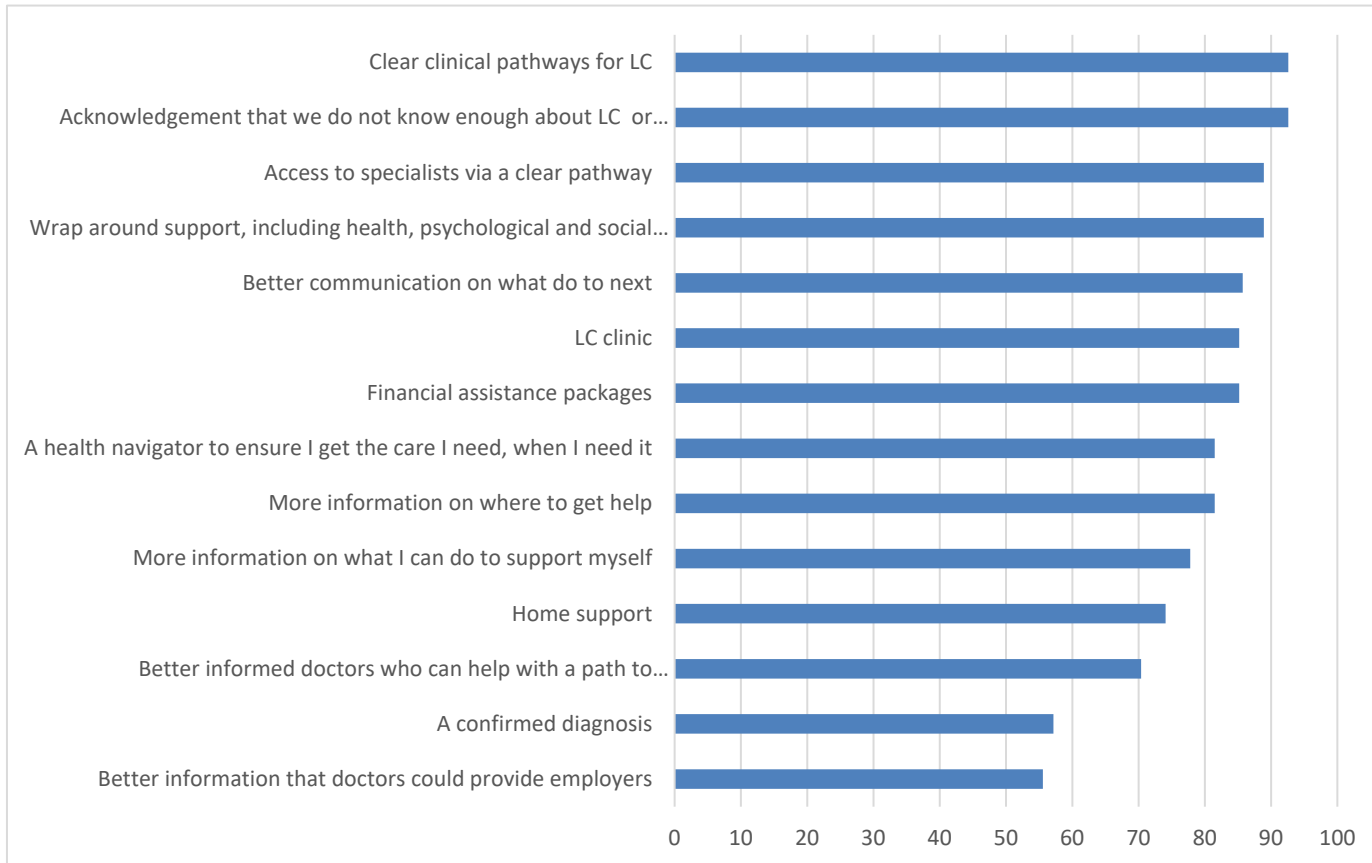
My specialist referral was not accepted (4%)

My doctor didn't know what to do next (43%)

I didn't know who to ask for help or support (37%)

I cannot get good information about vaccines for people with long COVID (40%)

Suggested improvements to care: Māori



Suggested improvements to care: non-Māori

