



# Long-COVID

## A GPs perspective

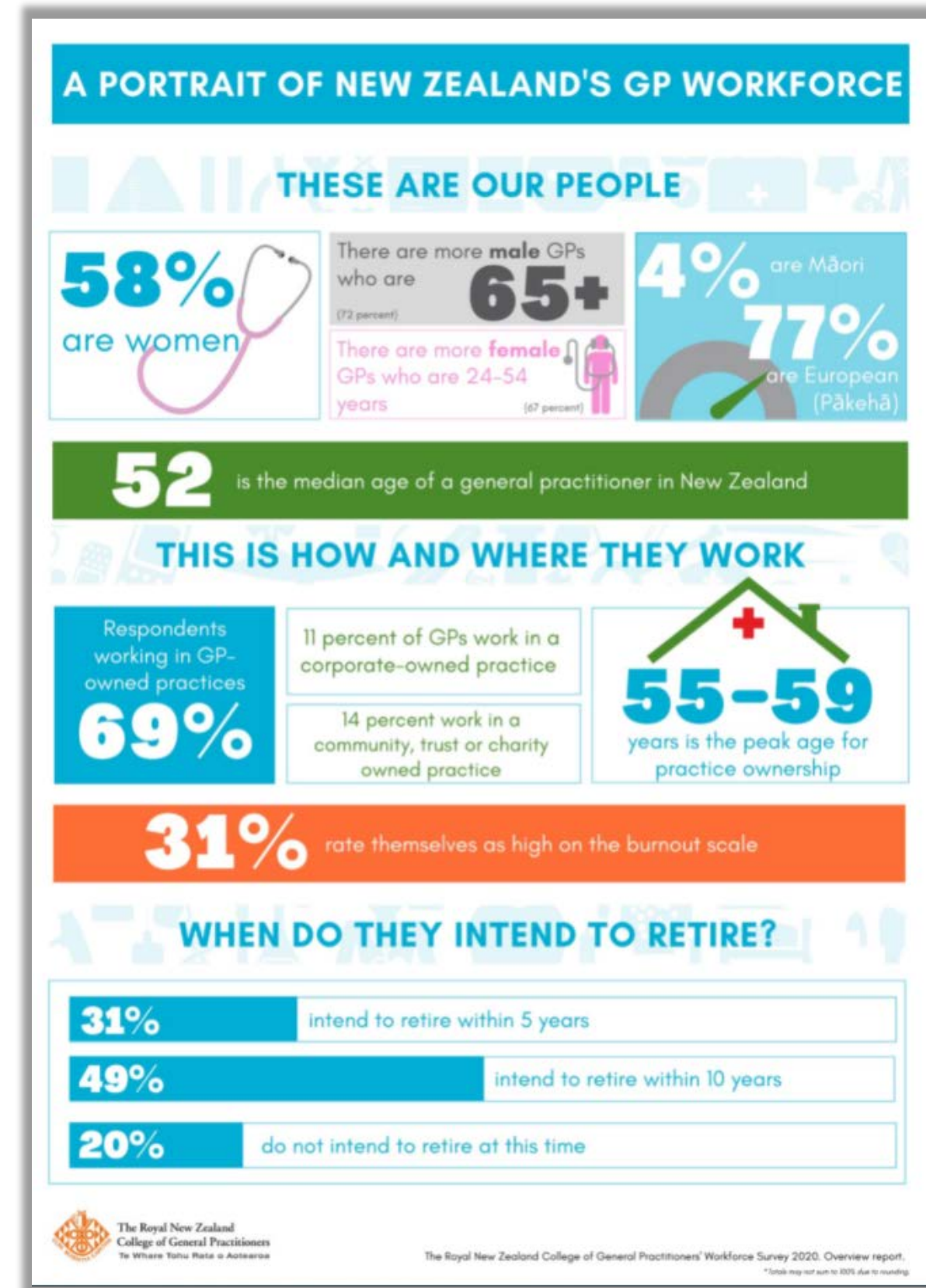
with Medical Director Dr Bryan Betty



The Royal New Zealand  
College of General Practitioners  
Te Whare Tohu Rata o Aotearoa

# The scale of general practice

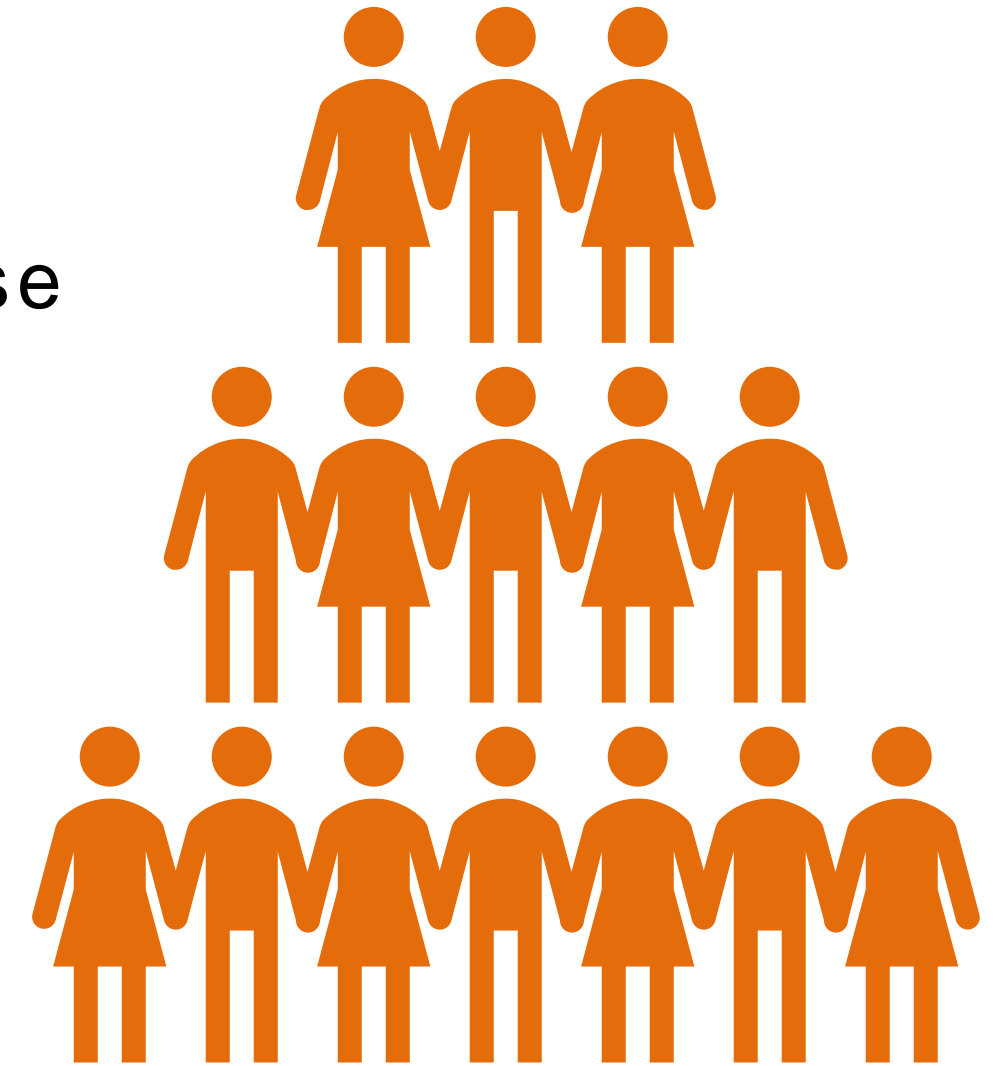
- 5,600 members working across 1,000 practices.
- Specialist general practitioners are the first point of contact for the majority of community healthcare concerns.
- Specialise in uncertainly, and undifferentiated medical, and mental health issues.
- In 2020, there were 20,500,000 contacts with general practice.
- Main concern is the impact of Long-COVID.



Info from 2020 Workforce Survey

# Long-COVID and general practice

- Important that care is targeted to those with Long-COVID, as opposed to those who are anxious, or attributing symptoms to it: the 'grey' of general practice
- Urgent that place of serology is clarified especially for those who have not tested positive to RAT or PCR.
- We need clear, consistent guidance on diagnosing and treating Long-COVID: most contact will happen at GP clinics.
- An increase of consultations on Long-COVID will add pressure to an already stretched and fatigued workforce.



# Any questions?



The Royal New Zealand  
College of General Practitioners  
Te Whare Tohu Rata o Aotearoa