



5-part: laser + impedance + colourimetric haematology

Three discrete measurement channels combine to provide a true 5-part differential, with White Blood Cell, Red Blood Cell and Platelet parameter results from just a 15µL sample. In only 60 seconds get results you can trust, with Laser flow cytometry, impedance counts and colourimetric detection technologies to detect not only white blood cell volume, but complexity and granularity obtained by a triple angle laser scatter. While accurate and fast, the Element HT5 remains very simple to use with a large colour touch screen, intuitive navigation, simplified data entry and easy reagent management.

Results in 60 seconds

Accurate 5-part laser and impedance

Profitable low cost per test

Small 15uL sample

Combination of Technologies

Counting Channels	Technology	Parameters
1	Diff Channel	Flow Cytometry
2	RBC/PLT Channel	Impedance
3	Baso/HGB Channel	Colourimetry
		LYM, MON, NEU, EOS
		RBC/PLT
		BAS, WBC, HGB

Small Sample Size of 15µL



Features:

HT5

Test Parameters

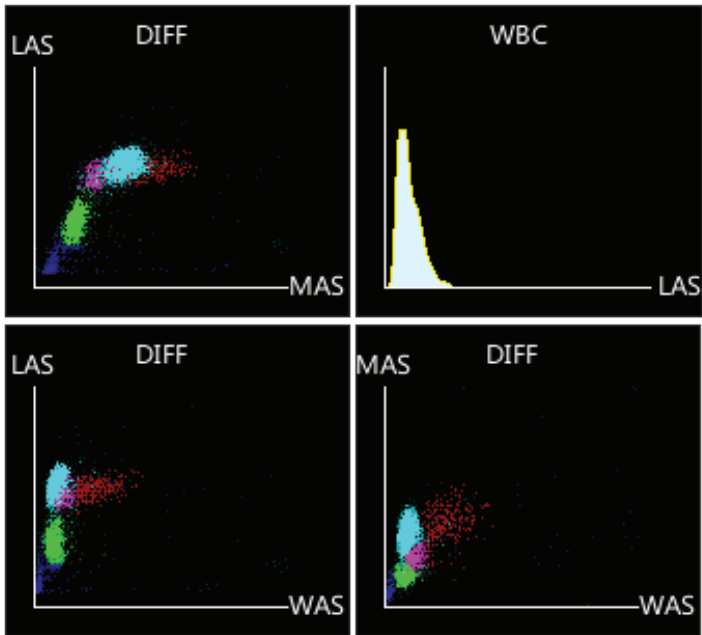
White Blood Cell	Red Blood Cell
Total White Blood Cell (WBC)	Total Red Blood Cell (RBC)
Neutrophil Number (NEU#)	Haemoglobin (HGB)
Neutrophil Percent (NEU%)	Haematocrit (HCT)
Lymphocyte Number (LYM#)	Mean Cell Volume (MCV)
Lymphocyte Percent (LYM%)	Mean Cell Haemoglobin (MCH)
Monocyte Number (MON#)	Mean Cell Haemoglobin Conc. (MCHC)
Monocyte Percent (MON%)	Red Blood Cell Distribution (RDW-CV)
Eosinophil Number (EOS#)	—
Eosinophil Percent (EOS%)	Platelet
Basophil Number (BAS#)	Total Platelet (PLT)
Basophil Percent (BAS%)	Mean Platelet Volume (MPV)

Results and Reporting

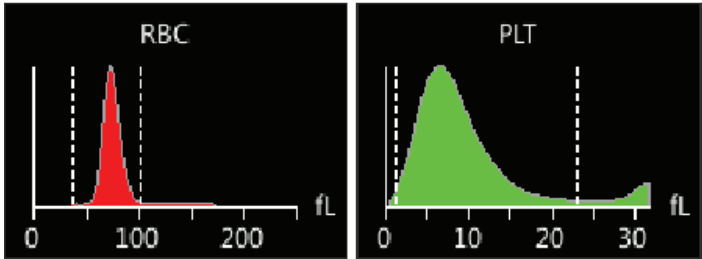
- Consolidated results and reporting**
 - Combine results using the HeskaView Integrated Software® program or transmit to your PMS. Rapidly retrieve patient worklist with bidirectional communication.
- Easy reagent management**
 - Manage reagents via bar-code scanner and on-board menu functions. Internal reagent storage saves space and reduces clutter
- Intuitive navigation**
 - Simplified data entry and patient test review with numeric results, histograms and scatter plots
- Multi-species availability**
 - Dog, Cat, Horse, Cow, Ferret, Goat, Llama, Monkey, Mouse, Giant Panda, Red Panda, Pig, Rabbit, Rat and Sheep
- Easy to use**
 - Web-style links for simple navigation
- Simple data management**
 - Rapidly retrieve trending data from patient record
- Efficient**
 - Assign, unassign or delete multiple items at once
 - Species-specific reference ranges and colour-coded flags make it easy to quickly evaluate patient data



WBC Scatter Plots & Histograms



RBC /PLT Histograms



www.heska.com.au 1300 437 522

©2019 Heska Corporation. All Rights Reserved. HESKA, Element HT5 and HeskaView Integrated Software are registered trademarks of Heska Corporation. AU190208-001

