

# HIP SOCIETY MEETING

Millbrook, Queenstown

2-3 August 2024



**NZOA**

New Zealand  
Orthopaedic Association

# Our Sponsors

## PLATINUM



## GOLD



## SILVER



## BRONZE



## EXHIBITOR



# CONTENTS

Welcome	04
General Info	05
Floorplan	08
Programme	09
Sponsor Ads	14
Delegate List	22

+ + + + +

+ + + + +

+ + + + +

+ + + + +

---

# Welcome

---

# Kia ora and welcome

**This year's COE will explore "Everything Hip". It is being held at Millbrook in Arrowtown on the 2nd and 3rd of August.**

This will be a one-and-a-half-day event, with input from a range of local experts. We will cover topics relevant to both the generalist and subspecialist, including sessions on infection, trauma, arthroplasty challenges and hip preservation.

We welcome you to join us in Queenstown for an update on "Everything Hip".

---

## CONVENORS

---



A stylized, handwritten signature in blue ink.

**Matthew Street**



A stylized, handwritten signature in blue ink.

**Pierre Navarre**

---

# General Info

---

## Catering and Trades area

Please note that all trades are in the Pavilion, which is a short 2-minute walk from the Millhouse Conference Centre, where the main conference plenary sessions will be held. Naturally, there will be good coffee served!

## Dinner & transport

Note the conference dinner will be held at **Stoneridge Estate from 6:30pm on Friday the 2nd of August.**

(756 Lake Hayes-Arrow Junction Highway RD 1, Frankton, Lake Hayes 9371)

This is a 3-course seated meal with drinks and canapes on arrival.

**ScenicNZ buses will be available** to collect you from Millbrook at 6:00pm, leaving at 6:15pm sharp! However, if you are making your own way there, please do let Nikki know.

Return buses will leave at 9:30pm and again at 10:30pm from Stoneridge back to Millbrook.

**If you have registered to attend the dinner and no longer wish to join us** or are unable to make it, please contact Nikki Wright, NZOA Conference & Events Manager.

---

# General Info

---

## Welcome Function

There is a welcome function on Thursday evening from 5:00pm – 7:00pm at the Clubhouse Restaurant at Millbrook with light canapes served. Please refer to the map for the location of the Clubhouse. There are no formal dinners on Thursday evening.

## Wi-Fi Password

Select option: “Millbrook Guest” and you should automatically get access, no password required.

## Contact details

**Nikki Wright**, NZOA Conference & Events Manager  
027 2801131, [nikki@nzoa.org.nz](mailto:nikki@nzoa.org.nz)

## Millbrook Map

We have included a map of Millbrook on the next page, for your reference.





MILLBROOK TO ARROWTOWN WALKING AND CYCLING TRAIL

EMERGENCY EVACUATION ZONE A NORTH

PROPERTY SALES OFFICE

SMITHY'S SMOKE HOUSE

MILLHOUSE RESTAURANT & CONFERENCE CENTRE

STREAMSIDE LANE

THE AVENUE

DELUXE STUDIOS

CLUBHOUSE RESTAURANT

RECEPTION

GOLF SHOP

HOLE IN ONE CAFE

TENNIS COURT & PLAYGROUND

KOBE CUISINE RESTAURANT

THE SPA

THE PAVILION

SWIMMING & HOT POOLS

HEALTH & FITNESS CENTRE

ONE & TWO BEDROOM SUITES

WATERFALL COTTAGE

EMERGENCY EVACUATION ZONE B SOUTH

BUTEL ROAD

ORCHARD HILL

FOX'S RUSH

TENNIS & PETANQUE COURTS

GOLDSTON COURT

MERRILOP LAKE

CHALMERS CLOSE

THE MEWS

SETTLER'S WAY

REATHWAY

USAKO'S RETREAT

3700 HWY 18A

TORLA LAKE

MALAGRANS RIDGE

1C

6R

7R

4R

3R

9R

8R

1R

2R

13R

14R

12R

11R

10R

15R

16R

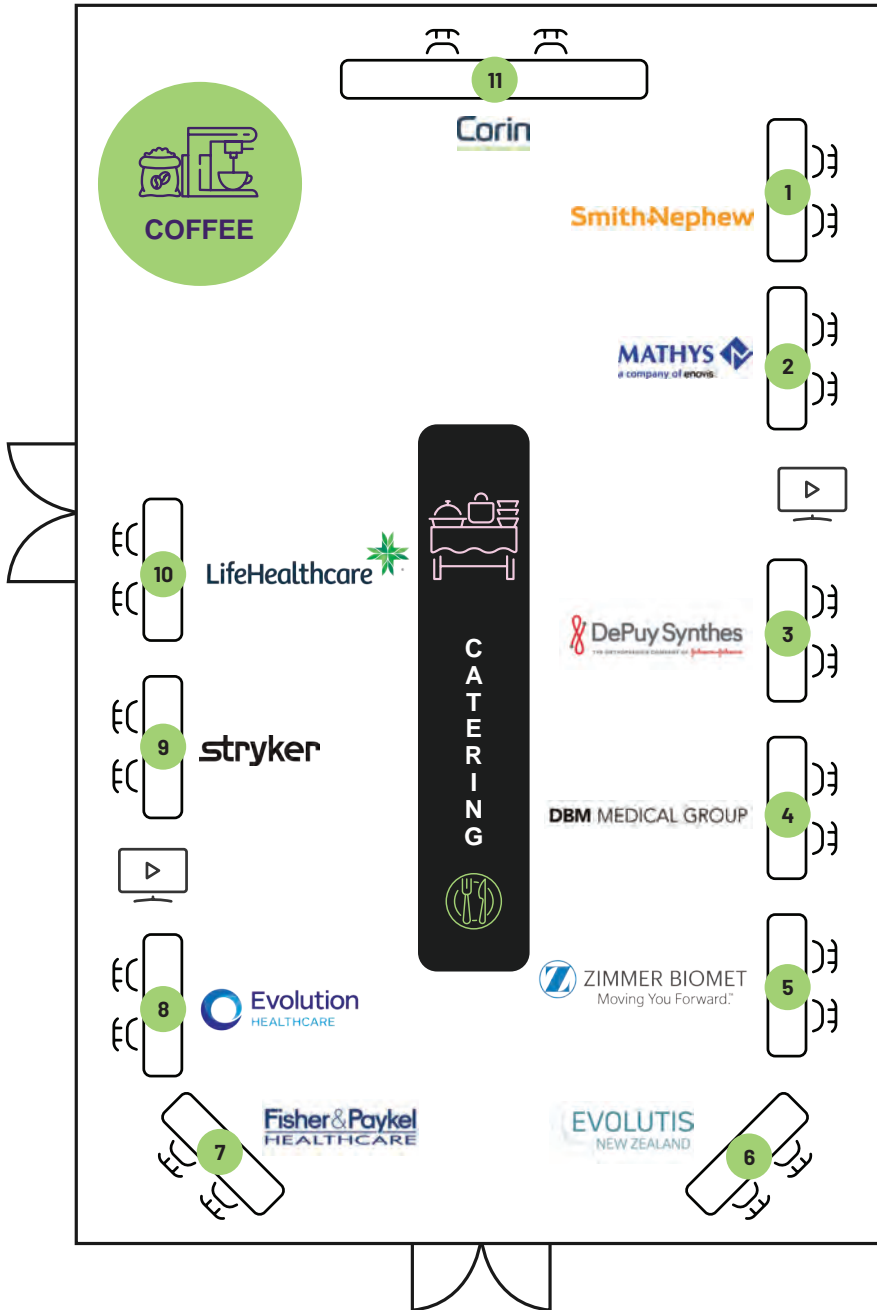
17R

18R

18C

17C

# Floor plan





# Programme

+ + + + +  
+ + + + +  
+ + + + +

## FRIDAY

- 7:15am **Registrations open**
- 8:20am - 8:30am **Welcome/Mihi** *Matt Street, Vaughan Poutawera*
- ARTHROPLASTY:**  
**Moderator:** *Vaughan Poutawera*
- 8:30am - 8:45am **Debate:** Anterior approach: Why I use it and how I do it. *Mike van Niekerk*
- 8:45am - 9:00am **Debate:** Posterior approach: Why I use it and how I do it. *Pierre Navarre*
- 9:00am - 9:15am **Surgical approach discussion panel:**  
*Mike van Niekerk, Georgina Chan, Pierre Navarre, Mary Nugent*
- 9:15am - 9:30am **When to use increased constraint? Large heads, lipped liners, dual mobility, constrained.** *Tim Roberts*
- 9:30am - 9:45am **Hip replacement in young patients: implant choice and bearing surfaces.** *Andy Vane*
- 9:45am - 10:00am **Acute total hip replacement for neck of femur fracture.** *Liam Dunbar*
- 10:00am - 10:05am **Platinum sponsor update - Corin/REM Systems**

# Programme

+ + + + +  
+ + + + +  
+ + + + +

**10:05AM - 10:30AM**

**MORNING TEA**

**TRAUMA:**

**Moderator:** *Pierre Navarre*

10:30am - 10:45am

**Acetabular fracture management, posterior column plating, 'fix and replace'**

*Jarome Bentley*

10:45am - 11:00am

**Short nails for hip fractures: should we still be worried about fractures below the implant?** *Alex Lee*

11:00am - 11:15am

**Periprosthetic femoral fractures - making sense of an epidemic** *Rob Sharp*

11:15am - 11:30am

**Periprosthetic fractures: to fix or not to fix?** *Georgina Chan*

11:30am - 12:00pm

**CASE DISCUSSIONS - TRAUMA**

*Vaughan Poutawera, Angus Jennings, Jarome Bentley, Alex Lee*

**12:00PM - 1:00PM**

**LUNCH**

**CHALLENGING PROBLEMS:**

**Moderator:** *Pete Devane*

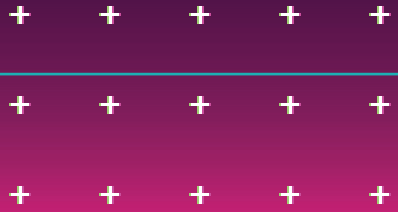
1:00pm - 1:15pm

**How I deal with recalcitrant trochanteric pain.** *Richard Keddell*

1:15pm - 1:30pm

**Dealing with psoas impingement post hip replacement.** *Mary Nugent*

# Programme



1:30pm - 1:45pm

**How I deal with abductor pathology.**

*Nick Gormack*

1:45pm - 2:00pm

**Management of metastases around the hip.**

*Andy Johnston*

2:00pm - 2:15pm

**How I deal with the young patient with hip pain.** *Matt Boyle*

2:15pm - 2:30pm

**Metal on metal hip surveillance.**

*Vaughan Poutawera*

**2:30PM - 3:00PM**

**AFTERNOON TEA**

**OPTIMISING OUTCOMES:**

**Moderator:** *Richard Peterson*

3:00pm - 3:15pm

**Short stay total hip replacement: Can we do it? Should we do it?** *Tony Lamberton*

3:15pm - 3:30pm

**Benefits of dual surgeon operating.**

*Georgina Chan*

3:30pm - 3:45pm

**Should we have a BMI cutoff for hip replacement?** *Gary Hooper*

3:45pm - 4:00pm

**What is the role of modern bariatric surgery prior to hip replacement?** *Jason Robertson*

4:00pm - 4:15pm

**Mistakes I've made and things I've learned (doing hip replacements).** *Richard Keddell*

4:30pm - 5:30pm

AGM

# Programme

+ + + + +  
+ + + + +  
+ + + + +

## SATURDAY

### INFECTION:

**Moderator:** *Andy Vane*

8:30am - 8:45am

**Infection prevention and space suit use.**

*Mark Zhu*

8:45am - 9:00am

**Indications for DAIR and how I do it.**

*Amir Sandiford*

9:00am - 9:15am

**One vs Two stage, and how I do it.**

*Jacob Munro*

9:15am - 9:30am

**Periprosthetic infection: an update from the Infectious Diseases perspective.** *Euna Sahng*

9:30am - 10:00am

### CASE DISCUSSIONS – INFECTION

*Jacob Munro, Amir Sandiford, Euna Sahng*

**10:00AM - 10:30AM**

### MORNING TEA

### ARTHROPLASTY:

**Moderator:** *Matt Street*

10:30am - 10:45am

**Are hip dislocation precautions still required?** *Louis LeBlond*

10:45am - 11:00am

**Revision surgery for large acetabular defects.** *John Scanelli*

11:00am - 11:15am

**What is the role of femoral impaction grafting and how I do it.** *Tony Lamberton*

# Programme

+ + + + +

+ + + + +

+ + + + +

11:15am – 11:30am

**Avoiding trouble in primary hip replacement  
– common mistakes and how to avoid them**

*Jacob Munro*

11:30am – 12:00pm

**CASE DISCUSSIONS – COMPLEX PRIMARY  
ARTHROPLASTY.** *Jacob Munro, Tony*

*Lamberton, Louis LeBlond, John Scanelli*

**12:00PM**

**CLOSE**

# Corin OPS Insight™

Connected Orthopaedic Insight

## Interactive, cloud-based 3D planning platform for THA

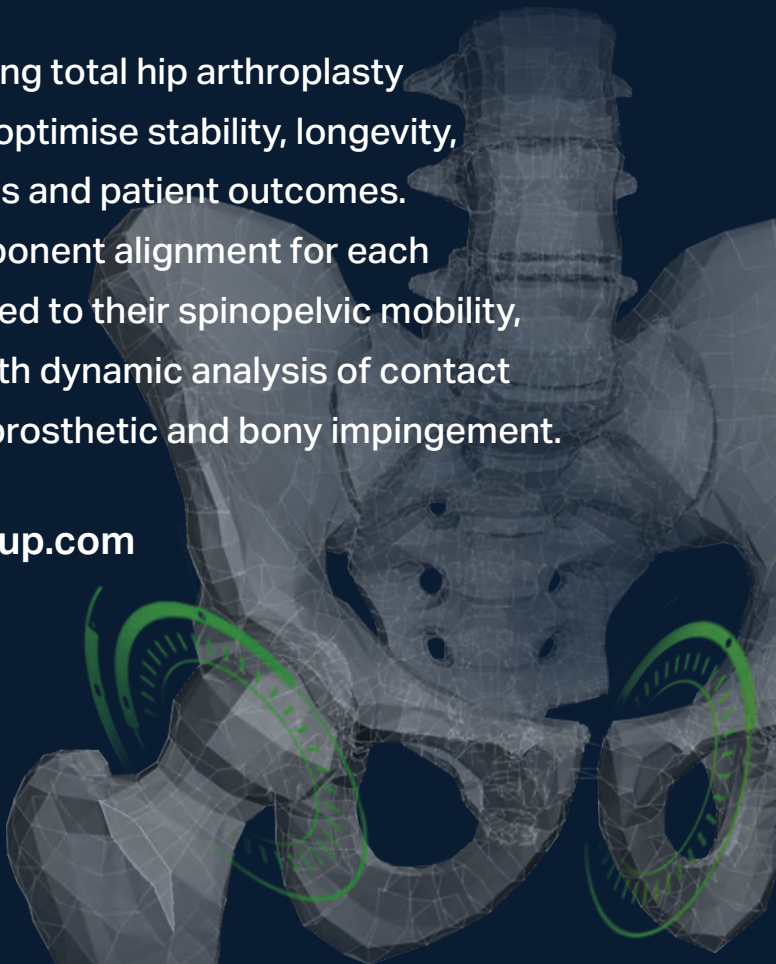
- Revolutionising total hip arthroplasty designed to optimise stability, longevity, biomechanics and patient outcomes.
- Unique component alignment for each patient tailored to their spinopelvic mobility, combined with dynamic analysis of contact mechanics, prosthetic and bony impingement.

[www.coringroup.com](http://www.coringroup.com)

Get in touch

**ParagonCare**  
REM SYSTEMS

[www.remsystems.co.nz](http://www.remsystems.co.nz)  
0508 654 258



# ParagonCare

## REM SYSTEMS

### Orthopaedics & Capital

ParagonCare | REM SYSTEMS has partnered with global leading orthopaedic companies, to provide New Zealand surgeons and hospitals, with high quality and innovative products.

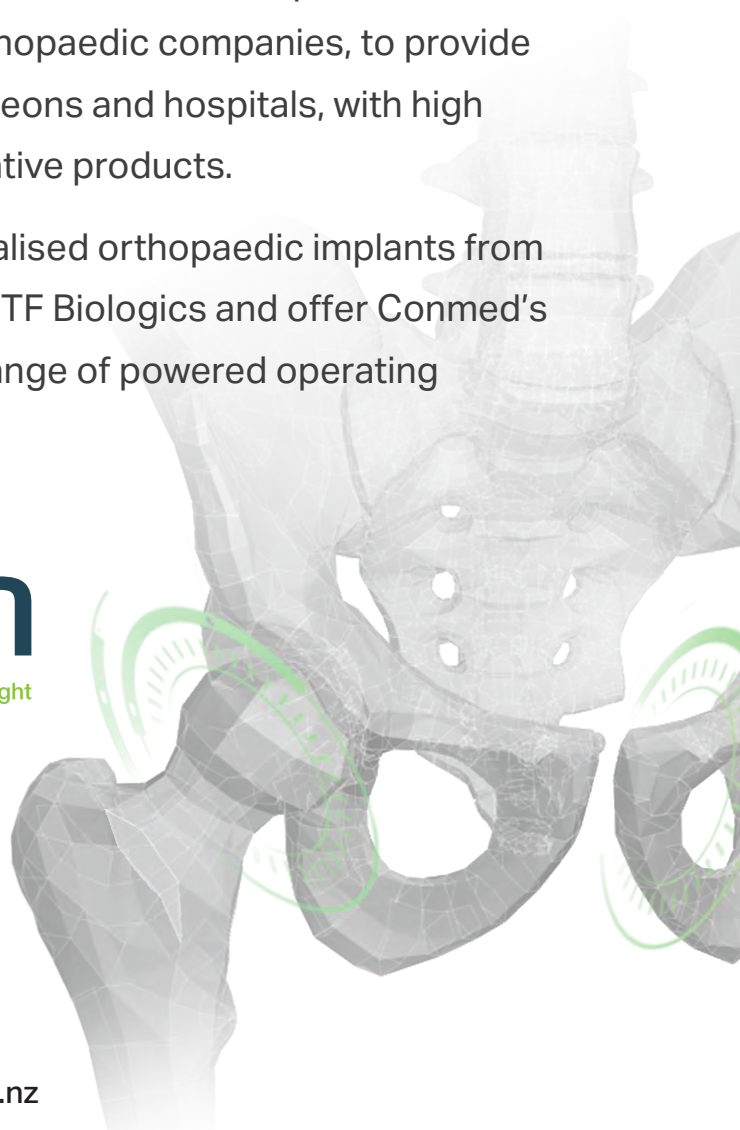
We provide specialised orthopaedic implants from Corin, Conmed, MTF Biologics and offer Conmed's comprehensive range of powered operating equipment.

# Corin

Connected Orthopaedic Insight

Get in touch

0508 654 258  
[www.remsystems.co.nz](http://www.remsystems.co.nz)





## + OXINIUM<sup>®</sup>/XLPE has the highest survivorship of all bearing combinations up to 19 years.<sup>1</sup>

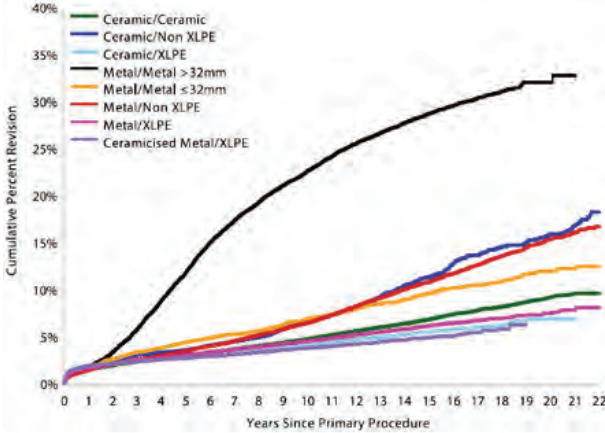


Figure HT32. Cumulative percent revision of primary total conventional hip replacement by bearing surface (primary diagnosis osteoarthritis)

95.1%  
Survivorship



	Number at Risk	0 Yr.	1 Yr.	3 Yrs	5 Yrs	10 Yrs	15 Yrs	20 Yrs
Ceramic/Ceramic	107126	101283	90732	78607	41948	14629	2623	
Ceramic/Non XLPE	9962	9108	7463	6050	3541	2150	764	
Ceramic/XLPE	143653	122064	86968	56755	15458	3377	286	
Metal/Metal >32mm	14424	14063	13216	11981	9306	4165	100	
Metal/Metal ≤32mm	5143	5021	4840	4854	3954	2651	787	
Metal/Non XLPE	35807	34413	32041	29306	20949	11722	3369	
Metal/XLPE	196515	181105	153647	124529	56134	15691	1385	
Ceramicised Metal/XLPE	34564	30720	24139	18672	8012	2230	0	

Note: Only bearing surfaces with >5,000 procedures have been listed

HR — adjusted for age and gender

**Ceramic/Ceramic vs Metal/XLPE**  
Entire Period: HR=0.99 (0.96, 1.03), p=0.770

**Ceramic/Non XLPE vs Metal/XLPE**  
0 – 2Yr: HR=1.16 (1.01, 1.32), p=0.029  
2Yr – 3.5Yr: HR=1.48 (1.15, 1.91), p=0.002  
3.5Yr – 5Yr: HR=0.85 (0.58, 1.24), p=0.388  
5Yr – 8Yr: HR=1.50 (1.18, 1.89), p=0.001  
8Yr+: HR=2.67 (2.37, 3.01), p=0.001

**Ceramic/XLPE vs Metal/XLPE**  
0 – 2Yr: HR=1.01 (0.97, 1.06), p=0.562  
2Yr+: HR=0.77 (0.72, 0.82), p=0.001

**Metal/Metal >32mm vs Metal/XLPE**

0 – 2Wk: HR=1.27 (0.96, 1.68), p=0.092  
2Wk – 1Mth: HR=0.46 (0.31, 0.67), p=0.001  
1Mth – 9Mth: HR=0.96 (0.79, 1.15), p=0.636  
9Mth – 1.5Yr: HR=2.81 (2.38, 3.33), p=0.001  
1.5Yr – 2Yr: HR=4.40 (3.66, 5.29), p=0.001  
2Yr – 3Yr: HR=6.46 (5.72, 7.29), p=0.001  
3Yr – 8Yr: HR=9.45 (8.90, 10.02), p=0.001  
8Yr – 10Yr: HR=5.92 (5.28, 6.63), p=0.001  
10Yr – 12Yr: HR=4.86 (4.29, 5.51), p=0.001  
12Yr+: HR=3.35 (2.97, 3.77), p=0.001

**Metal/Metal ≤32mm vs Metal/XLPE**

Entire Period: HR=1.42 (1.30, 1.56), p=0.001  
**Metal/Non XLPE vs Metal/XLPE**  
0 – 1Mth: HR=0.73 (0.62, 0.85), p=0.001  
1Mth – 6Mth: HR=0.89 (0.77, 1.03), p=1.20  
6Mth – 3.5Yr: HR=1.41 (1.30, 1.54), p=0.001  
3.5Yr – 5Yr: HR=1.57 (1.36, 1.80), p=0.001  
5Yr – 7Yr: HR=1.73 (1.53, 1.96), p=0.001  
7Yr – 10Yr: HR=2.13 (1.93, 2.37), p=0.001  
10Yr+: HR=2.56 (2.38, 2.76), p=0.001

**Ceramicised Metal/XLPE vs Metal/XLPE**

0 – 6Mth: HR=1.16 (1.06, 1.27), p=0.001  
6Mth – 1Yr: HR=1.04 (0.85, 1.28), p=0.694  
1Yr+: HR=0.62 (0.56, 0.69), p=0.001

38% ↓

From 1 year, OXINIUM/XLPE demonstrates a significantly lower risk of revision compared to Metal/XLPE (p=0.001)

Comparing the rates of revision for these bearings, Ceramicised Metal/XLPE<sup>\*</sup> has the lowest rate of revision at 15 years. As in previous years, the Registry urges caution in the interpretation of this result. This bearing is a single company product, used with a small number of femoral stem and acetabular component combinations. This may have a confounding effect on the outcome, making it unclear if the lower rate of revision is an effect of the bearing surface or reflects the limited combinations of femoral and acetabular prostheses. Tables and graphs have been reproduced in exact and complete form.

<sup>\*</sup>The term 'Ceramicised Metal/XLPE' is equivalent to 'OXINIUM/XLPE'.

This material is intended for healthcare professionals. For detailed product information, including indications for use, contraindications, precautions and warnings, please consult the product's applicable Instructions for Use (IFU) prior to use.

References: 1. Australian Orthopaedic Association National Joint Replacement Registry Hip, Knee & Shoulder Arthroplasty: 2023 Annual Report. Available at: <https://aoanjrr.sahmri.com/annual-reports-2023>. Accessed October 24, 2023. Smith & Nephew Pty Ltd (Australia) smith-nephew.com/en-au. Smith & Nephew Ltd (New Zealand) smith-nephew.com/en-nz. <sup>®</sup>Trademark of Smith+Nephew. All trademarks acknowledged. © November 2023 Smith+Nephew. 40608-anz V2 11/23.

# TRANSFORMING THE STANDARD OF CARE IN HIP ARTHROPLASTY

mymobility with Apple Watch<sup>®</sup>  
by ZIMMER BIOMET



This material is intended for healthcare professionals. Distribution to any other recipient is prohibited. Zimmer Biomet does not practice medicine. For indications, contraindications, warnings, precautions, potential adverse effects and patient counselling information, see the package insert or contact your local representative, visit [www.zimmerbiomet.com](http://www.zimmerbiomet.com) for additional product information. Check for country product clearances and reference product specific instructions for use. Not for distribution in France. Patients must have a compatible smart phone to utilize mymobility. Not all patients are candidates for the use of this product and surgeons should evaluate individually to determine which patients are appropriate for therapy at home. All names used in the mymobility app examples are fictitious. No identification with actual patients or health care professionals is intended or should be inferred. Apple, Apple Watch and iPhone are trademarks of Apple, Inc., registered in the U.S. and other countries. Zimmer Biomet Connected Health mymobility Application. © 2021 Zimmer Biomet

visit [www.zimmerbiomet.com/anz](http://www.zimmerbiomet.com/anz) to learn more

Sponsor: Zimmer Biomet New Zealand Company • 210 Khyber Pass Road • Grafton Auckland NEW ZEALAND



## Proudly operating superior healthcare services across New Zealand.

**Evolution**  
HEALTHCARE

No commercial show. No promises we can't keep. Only facts.

**Evolutis**  
GROUP



**Captiv<sup>®</sup>  
Freelineer<sup>®</sup>**

**95.6% Satisfied or Very Satisfied\***  
270 Freelineer cups with 3.5 years of mean FU demonstrated a survival rate at 99.2%, and 99.3% when considering Pexel-E.

**99.3% at 41 months**  
with Pexel-E

\* "Observational Study of Complication, Radiological Evolution, Functional Results, and Survival of a Cementless Cup Associated with Different Bearing Surfaces in Primary Indications THR". Study plan EEH001/2014, January 2023. On file at Evolutis.



**Captiv<sup>®</sup>  
DM**

**Squat & sit-crossed-legged at mean 13 weeks\*\***  
25 months of a series of 160 DM THR in JCOT, HHS was at 85.8 at latest FU (up from 54.6 pre-operatively). 1 case of DM cup loosening (0.6%).

**Mean flexion**  
at **120°**

\*\*Captiv<sup>®</sup> Dual Mobility cup: Agarwala et Al; in August 2020 published the results at 25 months of a series of 160 DM THR in Journal of Clinical Orthopaedics and Trauma



**Stemsys<sup>®</sup>**

**Femoral stem**  
NZ Registry : 10 year survivorship 99.98% and lowest annual revision rate of 0.37 \*\*\*

**Annual revision rate**  
at **0.37%**

\*\*\*clinical availability of PEXEL-E highly crosslinked with powder blended alpha-tocopherol (Vitamin E) DM liners beginning September 2024  
\*\*\*Report of the NZJR (New Zealand Joint Registry)



PRO **MADE**



# Insignia™ Hip Stem

Founded on Stryker's signature principles of implant fit, Insignia is your collared, metaphyseal-filling hip stem designed specifically for muscle-sparing approaches.



**References:**

1. Insignia Design Verification Memo D0000097336.

A surgeon must always rely on his or her own professional clinical judgment when deciding whether to use a particular product when treating a particular patient. We do not dispense medical advice and recommend that surgeons be trained in the use of any particular product before using it in surgery.

The information presented is intended to demonstrate the breadth of Stryker's product offerings. A surgeon must always refer to the package insert, product label and/or instructions for use, including the instructions for cleaning and sterilization (if applicable), before using any of Stryker's products. Products may not be available in all markets because product availability is subject to the regulatory and/or medical practices in individual markets. Please contact your representative if you have questions about the availability of Stryker's products in your area.

Stryker or its affiliated entities own, use, or have applied for the following trademarks or service marks: Insignia, Stryker. All other trademarks are trademarks of their respective owners or holders. The absence of a product, feature, or service name, or logo from this list does not constitute a waiver of Stryker's trademark or other intellectual property rights concerning that name or logo.

INSIGN-SS-1\_31783

Copyright © 2021 Stryker

Stryker New Zealand Ltd  
 PO Box 17-136,  
 Greenlane Auckland 1546  
 P: 64 9 573 1894  
 F: 64 9 573 1895



**DePuy Synthes**

THE ORTHOPAEDICS COMPANY OF *Johnson & Johnson*



LifeHealthcare<sup>®</sup>

Meet the LifeHealthcare  
representatives at **stand # 10**  
to learn more about our  
product range!

# Delegates

Name Surname	Hospital/Practice
<b>Ramez Ailabouni</b>	Stride Orthopaedics
<b>Stephen Bentall</b>	Royston Hospital Hastings
<b>David Brougham</b>	Palmerston North Hospital
<b>James Burn</b>	Christchurch Hospital
<b>Alex Campbell</b>	Auckland City Hospital
<b>Andrew Campbell</b>	Auckland City Hospital
<b>George Chan</b>	Tauranga Hospital
<b>Clayton Chan</b>	North Shore Hospital
<b>Michael Chin</b>	Dunedin Hospital
<b>Allen Cockfield</b>	Christchurch Hospital
<b>Rob Coup</b>	Whangārei Hospital
<b>Haemish Crawford</b>	Starship Children's Hospital
<b>Mark Cvitanich</b>	Bidwill Trust Hospital
<b>Charaka Dasanayake</b>	Bundaberg Base Hospital
<b>Annabel Dekker</b>	Napier Hospital
<b>Simon Dempsey</b>	Whanganui Hospital
<b>Peter Devane</b>	Wellington Hospital
<b>Graeme Doig</b>	Dr G J Doig Pty Ltd
<b>Micheal Douglas</b>	Te Whatu Ora Canterbury
<b>Liam Dunbar</b>	Dunedin Hospital
<b>Robert Elliott</b>	North Shore Hospital
<b>Prue Elwood</b>	NZOA
<b>Michael Flint</b>	Auckland City Hospital
<b>Giles Foley</b>	Wellington Hospital
<b>Supi Foliaki</b>	Timaru Hospital
<b>Russell Fowler</b>	Southland Hospital



# Delegates

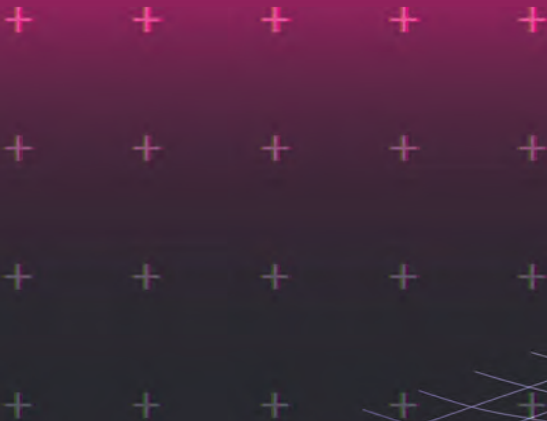
Name Surname	Hospital/Practice
<b>Cherrelle George</b>	Whangarei Hospital
<b>Darina Gilroy</b>	Hutt Hospital
<b>Chynna Gleeson</b>	Hutt Hospital
<b>Rodney Gordon</b>	Ascot Hospital
<b>Nick Gormack</b>	Middlemore Hospital
<b>Andrew Herbert</b>	Northland Orthopaedic Centre
<b>Gary Hooper</b>	University Of Otago
<b>Malinda Ileperuma</b>	Bundaberg Base Hospital
<b>Angus Jennings</b>	Nelson Hospital
<b>Andy Johnston</b>	North Island Sarcoma Service
<b>Prakash Kana</b>	Southland Hospital
<b>Luke Karalus</b>	Waikato Hospital
<b>Timothy Karssiens</b>	North Shore Hospital
<b>Richard Keddell</b>	Grace Orthopaedic Centre
<b>Arpad Konyves</b>	Rotorua Hospital
<b>Pieter Kruger</b>	Whakatane Hospital
<b>Tony Lamberton</b>	Grace Orthopaedic Centre
<b>David Lawson</b>	Hawkes Bay Hospital
<b>Louis LeBlond</b>	Dunedin Hospital
<b>Alex Lee</b>	Christchurch Hospital
<b>Daniel Lemanu</b>	Middlemore Hospital
<b>Dan Liyanage</b>	Hawke's Bay Hospital
<b>Carrie Lobb</b>	Waikato Hospital
<b>Tim Love</b>	Aorangi Orthopaedics
<b>Anthony Maher</b>	Waikato Hospital
<b>Justin Mathews</b>	Wellington Hospital

# Delegates

Name Surname	Hospital/Practice
<b>Rod Maxwell</b>	Leinster Orthopaedic Centre
<b>Stephen Mcgrath</b>	Waikato Hospital
<b>John Mckie</b>	Christchurch Hospital
<b>Hamish McLaren</b>	Hutt Valley Hospital
<b>Jacob Munro</b>	Auckland City Hospital
<b>Pierre Navarre</b>	Southland Hospital
<b>Mary Nugent</b>	Rotorua Hospital
<b>Pierre Pechon</b>	Palmerston North Hospital
<b>John Pennington</b>	Taranaki Base Hospital
<b>Richard Peterson</b>	Nelson Hospital
<b>Christopher Phoon</b>	Queenstown Joint Clinic
<b>Rocco Pitto</b>	Middlemore Hospital
<b>Vaughan Poutawera</b>	Tauranga Hospital
<b>John Rietveld</b>	Rietveld Surgical Limited
<b>Tim Roberts</b>	North Shore Hospital
<b>Euna Sahng</b>	Guest Speaker
<b>Amir Sandiford</b>	Southland Teaching Hospital
<b>Dean Schluter</b>	North Shore Hospital
<b>Peter Schneider</b>	Precision Orthopaedics
<b>Rob Sharp</b>	North Shore Hospital
<b>Tom Sharpe</b>	Christchurch Hospital
<b>Matthew Street</b>	Tauranga Hospital
<b>Richard Street</b>	Middlemore Hospital
<b>Neville Strick</b>	Neville Strick Orthopaedics
<b>Mark Stringer</b>	Whakatane Hospital
<b>Andrew Suchowersky</b>	Wellington Hospital

# Delegates

Name Surname	Hospital/Practice
<b>James Taylor</b>	Christchurch Hospital
<b>Dave Templeton</b>	Timaru Public Hospital
<b>Helen Tobin</b>	Boulcott Hospital
<b>Michael Van Niekerk</b>	Whangarei Hospital
<b>Andrew Vane</b>	Tauranga Hospital
<b>Ailsa Wilson</b>	North Shore Hospital
<b>Sophie Wilton</b>	Whanganui Hospital
<b>Nikki Wright</b>	Conference & Events Manager NZOA
<b>Wes Xia</b>	Hutt Valley Hospital
<b>Chris Xu</b>	Auckland City Hospital
<b>John Zhang</b>	Christchurch Hospital
<b>Mark Zhu</b>	North Shore Hospital



**HIP SOCIETY  
MEETING**

