

Why Choose Piletest?



The specialist foundation testing company

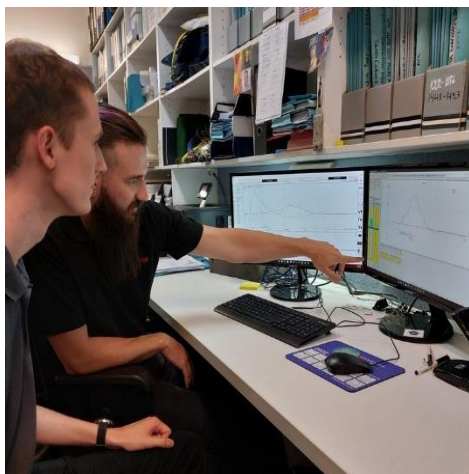
No matter your deep foundation design, Piletest are the experts in testing it. With over 35 years of experience, we have excelled across a broad array of challenging projects. We regularly perform testing across Australia and the Pacific Region. We take the time to understand our clients' needs and can arrange all require equipment and crew for a full package testing solution.

Industry-leading testing equipment



We use a diverse selection of cutting-edge testing equipment from Pile Dynamics Inc. to quantify structural and geotechnical performance. Our extensive collection of equipment and expertise allows us to provide the most advanced testing solution for any foundation type. Our Piletest Engineers perform testing in-person as standard, however, we do have remote testing capabilities as required. We regularly showcase our testing gear on our LinkedIn at *PiletestAustralia*.

Analysis you can trust



We believe in providing the most technically accurate, realistic and honest solution and will happily take the time to explain findings to our clients. All Piletest Engineers have a proficiency rank in association with Pile Driving Contractors Association and Pile Dynamics Inc. All testing performed by Piletest complies with AS 2159-2009, government technical specifications and other relevant codes where applicable. Our analysis techniques have been confirmed with reference to an extensive collection of comparison testing performed Australia-wide.

Please contact us on **07 3366 2215** or at Piletest@piletest.com.au for any enquires.



@PiletestAustralia



<https://www.piletest.com.au/>

Our Services:



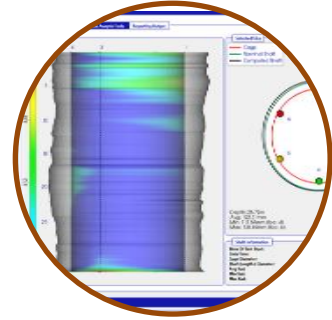
Dynamic Load Testing (PDA)

High Strain Dynamic Load testing using the Pile Driving Analyser (PDA) to assess pile capacity, driving criteria, integrity and stresses over the entire foundation length.



Low Strain Integrity Testing (PIT)

Pile integrity method using low strain impacts to determine defects or variations in the pile.



Thermal Integrity Profiling (TIP)

Pile integrity method performed by installing thermal wire prior to concrete pouring using the heat generated by curing concrete to determine integrity and quality of drilled foundations.



Crosshole Sonic Logging (CSL)

Pile integrity method performed by installing tubes into the pile prior to concrete pouring and using ultrasonic pulses to determine defects within the pile.



Drilled Shaft Base Cleanliness Evaluation (SQUID)

The Shaft QUAntitative Inspection Device (SQUID) is used to assess base cleanliness and performance.



Shaft Profile Evaluator & Verticality Evaluation (SHAPE)

The SHAft Area Profile Evaluator (SHAPE) can be used in drilled shafts under fluid to determine their profile as well as the verticality of the pile.

Please contact us on **07 3366 2215** or at Piletest@piletest.com.au for any enquires.



@PiletestAustralia



<https://www.piletest.com.au/>