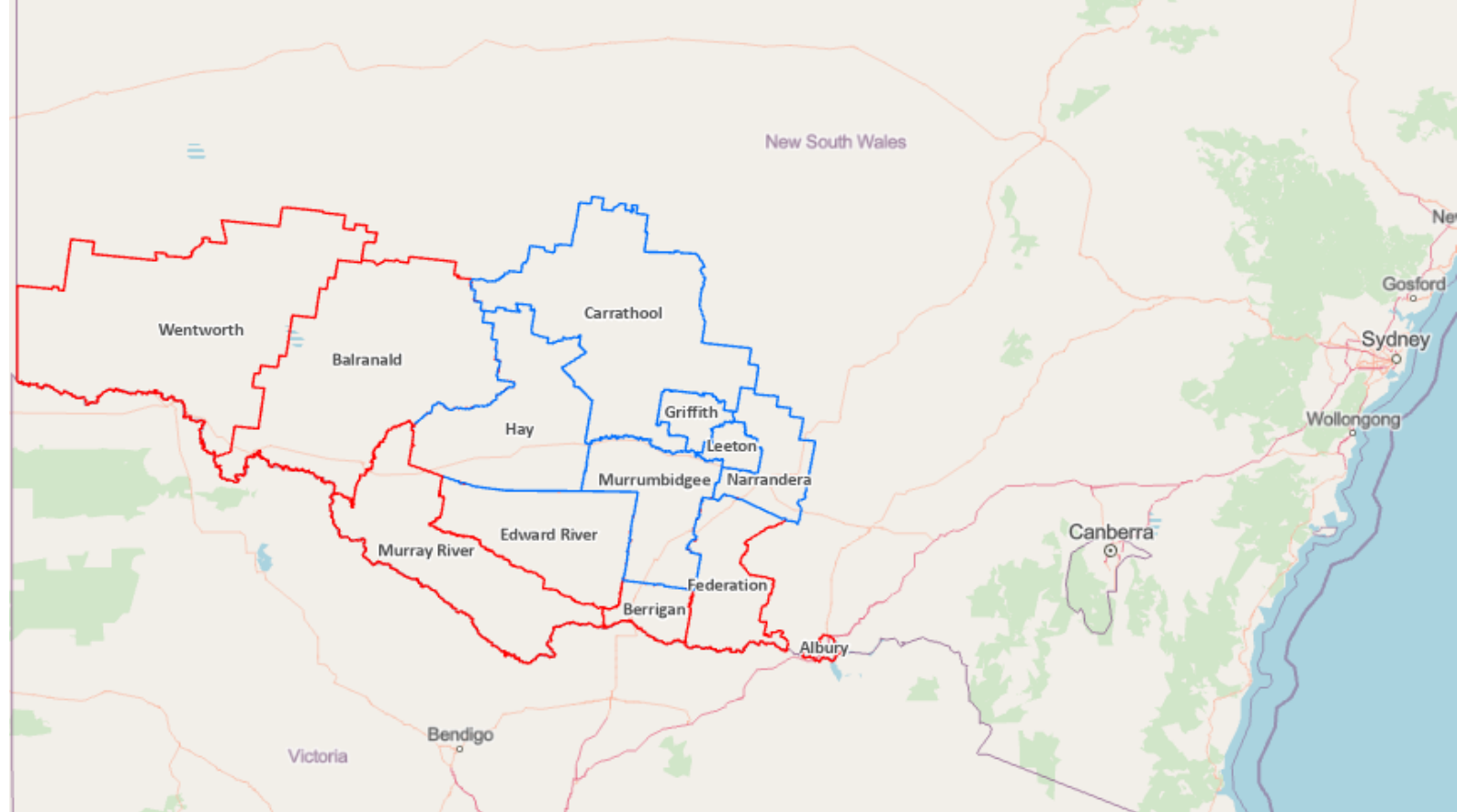




RAMJO
RIVERINA
WASTE GROUP

RAMJO
MURRAY
WASTE
GROUP



PIONEERING SUSTAINABLE
SOLUTIONS

**RIVERINA & MURRAY
REGIONAL RESOURCE RECOVERY TEAM**

Department of Planning and Environment

Challenge Brief Circular Economy

Smart City Innovation Challenges

March 2022

Proudly funded by



This initiative is supported by the NSW Government through the NSW Environmental Protection Agency.



CIRCULAR ECONOMIES FACE SPECIFIC CHALLENGES IN REGIONAL AREAS

High Transport Costs

Lack of Infrastructure

Limited Resources

Old Fashioned Attitudes

Landfill can be Cheaper
than Recycling

How can innovation help overcome these
barriers?

CURRENT CE TECHNOLOGY ASPIRE PLATFORM




- Subscription-based
- Only includes data from signed-up businesses
- High cost for councils or large organisations
- **Need for a regional alternative:** Why Aspire doesn't fully meet regional needs.

Dedicated to a better Brisbane


Another successful exchange at ASPIRE!


Join us in creating a sustainable future through collaborative resource exchange!


The resource exchanged:
Polystyrene Foam Packaging

	5 kg diverted from landfill
	40 kg carbon emissions saved
	FREE savings

**Polystyrene Foam Packaging
Plastics**



 **Recirculated**



Dedicated to a better Brisbane

CE DATA PORTAL INTRODUCTION

■Origins

- \$1m grant from Transport NSW Innovation Fund.

■Developer

- Peclet Software

■RAMJO & Albury City's Role

- Testing, data validation and recommendations.

Department of Planning and Environment

Challenge Brief Circular Economy

Smart City Innovation Challenges

March 2022

DATA PORTAL – KEY FEATURES

Predictive Waste Output: Using ABR data and French models to anticipate regional waste streams.



Challenges in Data Validation:

Registered vs.
actual business
locations.

Registered business
names differing
from trading names.

Addressing these
issues in the trial
for better accuracy.



CASE STUDY 1

FOREST ONE

- Converts pallets to timber laminate.





CASE STUDY 2

GOTERRA

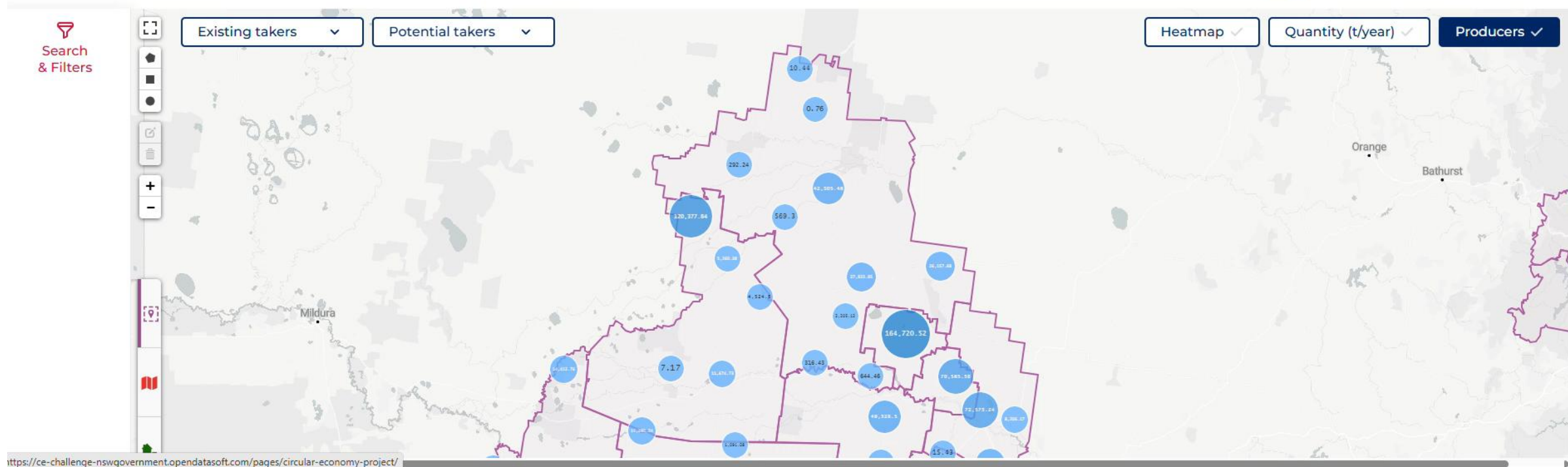
- Converts organic food waste into protein for animal feed



DEMONSTRATION



5,013 producers **1,444,336 t/year** of residual materials

☐ Include low confidence predictions ⓘ

BENEFITS OF THE CE DATA PORTAL MODEL:

- **Unrestricted Access to Business Waste Data**

The model allows businesses to share their waste data without major restrictions, providing valuable insights into regional waste streams. This transparency enables:

- **Better Future Planning**
- **Identification of Opportunities**
- **Collaboration**

ADDRESSING THE RISKS

- **Concerns Over Data Privacy:**
While unrestricted data access has many benefits, there is a risk that businesses may be hesitant to participate if they fear their data will be publicly visible.
- **Mitigation Options:**
 - Opt-in privacy controls
 - Aggregated, anonymized data

KEY RECOMMENDATIONS



COMMENTS & QUESTIONS

