

FESTIVAL OF NURSING



KEEPING PEOPLE WELL AND OUT OF HOSPITAL

Abstract Submission Guidelines

Brisbane Convention and Exhibition Centre
Thursday 24th July - Saturday 26th July 2025

Program Overview

APNA represents over 98,000 primary health care nurses in Australia working outside of hospitals, including those employed in general practice, schools, aged care facilities, correctional facilities and in wider community settings.

Our annual Festival of Nursing has a vibrant program featuring workshops, renowned keynotes, panel discussions, and breakfast sessions to inspire delegates, connect them with their colleagues and celebrate what it means to be a valued, visible, and respected primary health care nurse.

The Festival of Nursing will offer delegates the opportunity to:

- Extend their scope of practice through hands-on clinical and leadership workshops.
- Be inspired by peers.
- Enhance their education and build on current skills, including updates on key guidelines and policy issues.
- Learn about new and innovative roles for nurses and models of care that can be adopted in similar settings.



- Have input into key issues affecting nursing in primary health care.
- Exposure to industry-leading exhibitors for further learning and relationship building.
- Attain the majority of CPD hours required for the year to meet national registration obligations.
- Interactive learning tied in with lively social events will provide nurse delegates with the opportunity to connect and share their experiences, questions and insights with experts and peers in primary health care.

Key Dates

January 2025

Abstract Submissions Open

Applications will be accepted on a rolling basis they are submitted to allow speakers time to organise travel and other logistics.

21 March 2025

Abstract submissions close 11:59pm (AEDT)

April 2025

All authors not previously contacted will be notified of outcome.

May 2025

Presenters to confirm acceptance.

Themes

The theme for the 2025 APNA Festival of Nursing is "**Keeping people well and out of hospital.**"

This is your opportunity to inspire and show nurses and other professionals working in primary health care your work to improve the health care of Australians and keep them where they want to be—home.

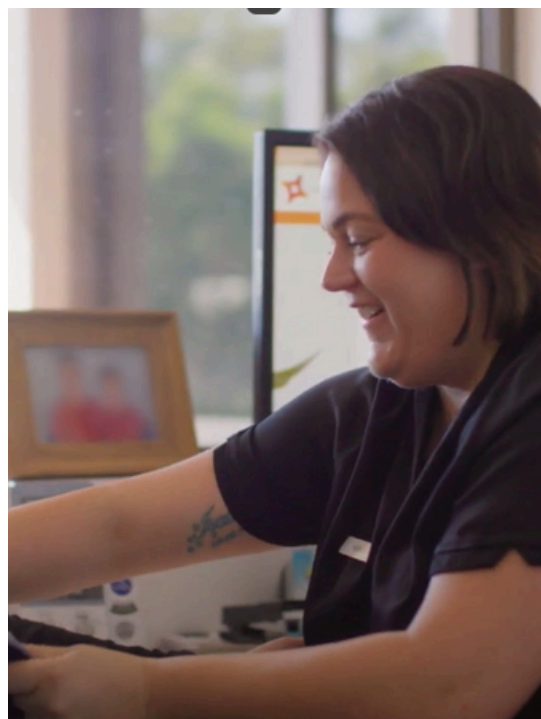
As well as our overall theme there are four sub-themes to guide abstract submissions.

Primary and Community-Based Care

- Primary and community-based care focuses on preventative healthcare such as regular screenings, vaccinations, and lifestyle management to reduce hospital visits and manage chronic diseases.
- Home care services offer health care and monitoring at home, particularly for those with chronic conditions or older people. They help them manage their conditions effectively and avoid hospitalisation.

Innovative and Integrated Care Models

- Innovative and integrated care models involve multidisciplinary teams, including primary healthcare nurses, allied health and mental health professionals, doctors and social workers, primary health care professionals working in rural and remote regions who collaborate to provide comprehensive care outside hospitals.



- Digital, AI, mobile health platforms, peer support, and online communities enable patients to monitor their health, adhere to medications, and connect with others for emotional support and shared experiences.

Person-centred Education and Empowerment

- Self-management programs offer resources and education to help individuals manage their health and medical conditions at home, while health literacy initiatives ensure patients understand their conditions and medications, reducing unnecessary hospital visits.
- Peer support and online communities connect patients with similar health challenges, provide emotional support, and develop person-centred care models that incorporate patient preferences, reducing unnecessary admissions.

Social Determinants of Health (SDOH), Social Support and Wellbeing

- Primary care providers are essential in identifying and addressing social determinants of health by offering integrated care that includes social support services. This approach can improve health outcomes and lower healthcare costs. For instance, ensuring patients access safe housing and nutritious food can significantly enhance their overall health and reduce hospital visits.
- Community outreach programs and home health services strengthen social networks and address environmental factors to prevent hospital stays.

Abstracts detailing creative, forward-thinking projects aimed at fostering a healthier future for all Australians, or examples of models of care that optimise the role of the nurse are encouraged.

Both clinical and non-clinical aspects of nursing can be explored, including population health priorities, quality and safety in practice, workforce development, health literacy, coordinated care, social determinants of health, justice and equality.

APNA strongly encourages nurses who have not presented an abstract before to make a submission. In addition to being beneficial to peers and broader health care, the feedback is unanimous that the experience is professionally and personally rewarding, often leading to further career opportunities through

leadership, mentoring and peer education.

Abstract formats

There are two formats this year:

- Oral concurrent presentations where presenter/s will have 45 minutes to present their abstract.
- Speed presentation sessions where four presenters will have 12 minutes each to present their abstract.

When submitting your abstract, you may choose your preferred format. While your preference will be considered, this cannot be guaranteed. APNA will assess all abstract submissions and, if successful, allocate the presentation format deemed most suited to the topic and program.



How to submit your abstract

Abstracts can only be submitted via our Abstract Submission Portal.

**Abstract submission
portal**

Please make sure you read all the information provided regarding the submission of abstracts. Lodgement of abstracts acknowledges agreement to the terms and conditions listed.

The APNA Organising Committee will only communicate via email with the nominated contact for abstract submissions therefore it is imperative that the details given in the address for correspondence are accurate.

Your submission should also meet one of the four sub-themes.

You will need to include:

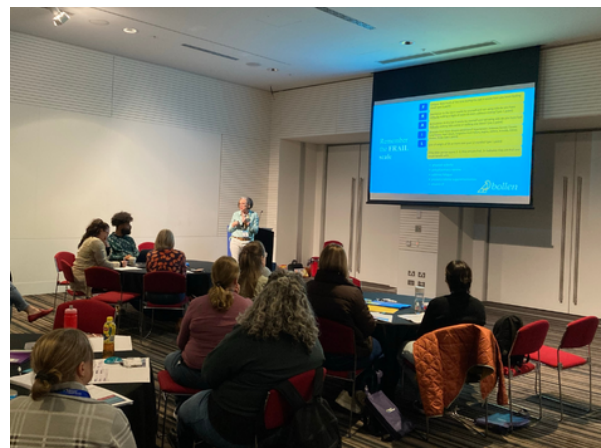
- Your contact details.
- Names of any additional authors.
- A brief biography (max 50 words, which can include institutional or research media links.
- Presentation title (max 30 words.)
- Requested presentation type.
- Abstract completed using one of the templates provided - Research or Practice.
- Research-based submissions should include background, methods, results, discussion/conclusion.

- Practice or lived experience submissions should detail the problem, what you did, the results and any lessons learned.
- Abstracts must be checked for accuracy and spelling.

Review and Selection Process

Abstracts will be reviewed against the following criteria:

- Provides innovative approach to an issue in primary health care nursing.
- Offers relevant implications for practice, policy, structural change or research in the field of primary health care nursing, e.g. the potential for replicable models.
- Intervention/project/case study/research applies appropriate methodology and measurement of change/improvement.
- Relevance /innovation of audience engagement/participation Activities to be undertaken during the presentation.
- Quality content and writing of the abstract.



Terms and Conditions

For a submission to be accepted, the author/s must agree to the following:

- If the abstract is accepted, at least one author will register to attend and present at the conference.
- Authors are responsible for all costs associated with preparing, attending and presenting at the Festival of Nursing.
- APNA has permission to publish the abstract and related presentation materials on the APNA website and in the Festival of Nursing Workbook.
- The date and time of their presentation is at the organiser's discretion.
- Authors must give permission for a photographer and/or videographer to be present at their presentation and for APNA to use these images online and in print for promotional purposes.

- If there is a reason this is not possible, please contact (in confidence) the event organisers. We have in place procedures to protect anyone who does not wish to have their presence at the festival shared.
- If you are using any AI-generated content in your presentation, it must be clearly identified as such.

Further Information

For enquiries please contact the Festival of Nursing Conference Organiser at fon@icms.com.au.

