

## Accommodation Options

Hotel   Star Rating	Distance to Venue	Room Type	Rate
Sudima Auckland City   4.5 star	2 mins walk	Deluxe Twin Rooms	\$209
Hotel Grand Chancellor   4 star	3 mins walk	Superior King or Twin Rooms	\$180
Crowne Plaza Auckland by IHG   4 star	5 mins walk	Standard Rooms Premium Rooms (refurbished)	\$200 \$280
Hotel Indigo Auckland By IHG   4.5 star	6 mins walk	Standard King Room Premium Twin Room	\$229 \$279
Rydges Auckland   4 star	6 mins walk	Superior King Rooms	\$199
Swiss-Belsuites Victoria Park   4 star	8 mins walk	One Bedroom Apartment Two Bedroom Apartment	\$250 \$350
SkyCity Hotel   4.5 star	3 mins walk	Premium King or Twin Rooms	\$239
Horizon Hotel	1 min walk	Superior King or Twin Rooms	\$299

Details and prices are subject to change beyond our control

Please look through the details on the next pages, and on the registration page to make your choice for your ideal accommodation.

If you are looking at other budgets or star ratings (3 1/2 star or 3 star etc), please contact us - we are here to help.

## Sudima Auckland City (4 1/2 star)

In the heart of Auckland's central business district, Sudima Auckland City sits directly opposite New Zealand International Convention Centre making it the ideal choice for conference attendees.

This contemporary hotel offers 186 well-appointed rooms and suites designed for comfort and convenience, whether you're in town for business or leisure.

Guests enjoy thoughtful amenities including 24-hour reception and concierge, free unlimited Wi-Fi, in-room Amazon Echo, and a full-service modern-Asian, plant-based restaurant (East) plus a rooftop bar (Sunset) - perfect for a relaxed drink after a day at NZICC.

For those who like to stay active, there's access to a local gym nearby, and for convenience: 24-hour room service, valet parking, optional accessible rooms and wheelchair-friendly public areas.

### Room Types:

#### Deluxe Twin Room (24sqm)

Each room is thoughtfully outfitted with modern conveniences: free high-speed Wi-Fi, a flat-screen TV, mini-fridge, tea and coffee-making facilities, an in-room safe, iron/ironing board, hairdryer and individually controlled heating/air conditioning so you can settle in comfortably after a day at the conference.

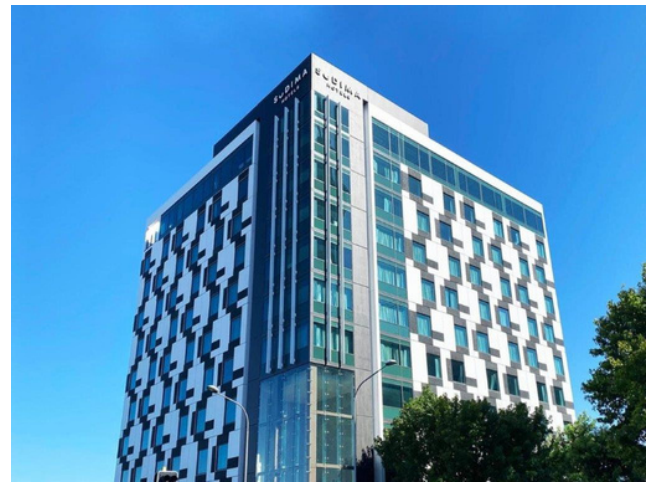
Rooms are sound-proofed and include blackout curtains for a good night's rest — ideal if you've had a long day or early start.

2 x Double beds (maximum 3 people in room)

#### 2 minute walk to NZICC (220m)

Car Parking: \$55 per night, valet parking

Breakfast: \$38 per person (if bed and breakfast rate is not chosen)



## **Hotel Grand Chancellor Hotel (4 star)**

Perfectly positioned just steps from the New Zealand International Convention Centre, Hotel Grand Chancellor Auckland is the ideal choice for corporate travellers attending meetings or events, as well as visitors who want to be at the heart of the city. This sleek, modern hotel provides everything you need for a productive and comfortable stay. Enjoy sweeping views of the city and harbour from our top-floor rooms and fitness centre, or unwind in our tranquil courtyard — a peaceful retreat from Auckland's busy streets. Start your day with a fresh breakfast buffet and finish with a relaxed a la carte dinner at The Forester, our stylish onsite restaurant and bar. With convenience, comfort and connectivity at its core, we make your time in Auckland effortless.

### **Room Types:**

#### **Superior Room (22sqm)**

Expect a cosy yet well-equipped space with either a king bed (Superior King) or two single beds (Superior Twin). These rooms deliver all the essentials for a smooth stay: air conditioning / heating, a flat-screen TV, complimentary high-speed WiFi, a mini-fridge, safe, iron/ironing board, wardrobe and a private bathroom with a walk-in shower and rainfall-showerhead.

1 x King bed or 2 x Single beds (maximum 2 people in room)

#### **3 minute walk to NZICC (550m)**

Car Parking: nearby at the Sky City Car Park @ \$39 per night

Breakfast: \$35 per person (if bed and breakfast rate is not chosen)



## **Crowne Plaza Auckland by IHG (4 star)**

Just moments from New Zealand International Convention Centre, Crowne Plaza Auckland offers a highly convenient base for conference delegates wanting to stay close to sessions, networking and Auckland's CBD dining scene. The hotel features over 300 rooms and suites designed for rest and productivity, with many offering harbour or city skyline views.

Guests enjoy a well-equipped fitness centre, business lounge, 24-hour reception and concierge, free Wi-Fi, and Aria Restaurant & Bar — a relaxed spot to connect with fellow delegates over drinks or dinner after a day at NZICC.

### **Room type:**

#### **Standard Room (32sqm)**

The hotel's standard rooms are modern and comfortable, featuring plush bedding, work-friendly desks and city or harbour views. Ideal for conference delegates, they provide a relaxing retreat after a full day at NZICC.

1 x King Bed and 2 x Queen Beds (maximum 3 people in room)

#### **Premium Room (32sqm, refurbished)**

The newly refurbished premium rooms offer an elevated stay with contemporary design, upgraded furnishings and enhanced bathrooms. Perfect for delegates wanting extra comfort and style while staying close to NZICC and networking hubs.

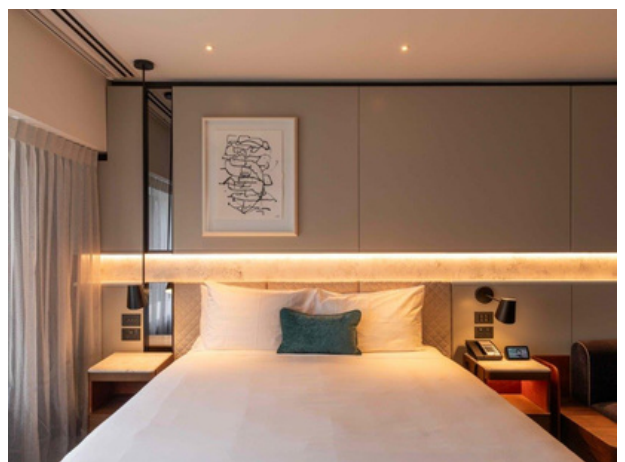
1 x King Bed or 2 x Queen Beds (maximum 3 people in room)

#### **5 minute walk to NZICC (500m)**

Parking is available in the Atrium Car Park adjacent to the hotel, with discounted rates for in-house guests: \$30 per night (Monday–Friday) and \$15 per night (Saturday–Sunday).

Electric vehicle charging stations are available on Level 8 of the Atrium Car Park. Guests must bring their own charging cables.

Breakfast rate is additional @ \$42 per person

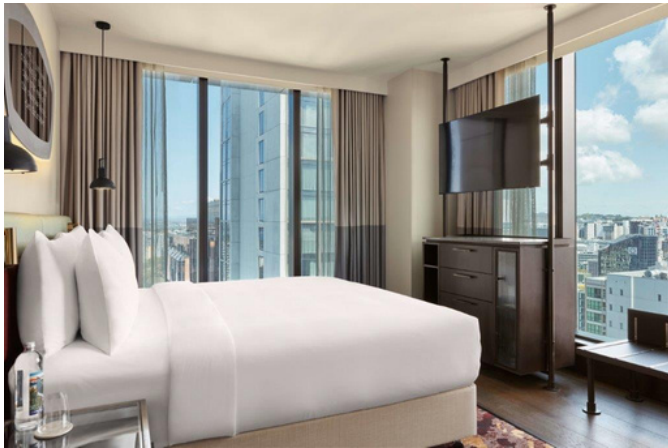




## **Hotel Indigo Auckland by IHG (4.5 star)**

Located within easy walking distance of NZICC, Hotel Indigo Auckland blends boutique style with a strong neighbourhood vibe, ideal for delegates wanting a more design-led stay close to the conference precinct.

Rooms are contemporary and thoughtfully designed, with smart tech, quality bedding and spaces that work well for both downtime and catching up on emails between sessions. Guests can unwind at the hotel's signature restaurant and bar — a great spot for informal delegate meet-ups — along with access to a fitness centre, 24-hour reception, free Wi-Fi and accessible rooms.



### **Room type:**

#### **Standard King Rooms (24sqm)**

Stylish and well-designed, the Standard King rooms offer a comfortable king bed, smart workspace and contemporary finishes, ideal for unwinding after a full day at NZICC. A great option for delegates wanting boutique comfort within easy walking distance of the conference precinct.

1 x King Bed (maximum 2 people in room)



#### **Premium Twin Rooms (29sqm)**

The Premium Twin rooms provide extra space, modern design and thoughtful amenities, perfect for colleagues travelling together. Ideal for conference delegates seeking comfort, flexibility and a relaxed base close to NZICC and post-session networking spots.

2 x Queen Beds (maximum 3 people in room)



### **6 minute walk to NZICC (500m)**

Car Parking: Valet Parking \$40 per night

Breakfast: \$35 per person (if bed and breakfast rate is not chosen)

## **Rydges Auckland (4 star)**

Located right in the heart of Auckland's entertainment district, our hotel is a fresh, modern oasis perfect for everything from high-tech conferences of 240 to a simple weekend getaway. You'll stay in one of the 267 stylish rooms on Hobson Street, just a short stroll from the bars at Viaduct Harbour and the boutique shopping on High Street. The friendly team is on hand to make sure everything runs smoothly and goes well beyond the standard hotel experience.

### **Room type:**

#### **Superior King Room (28sqm)**

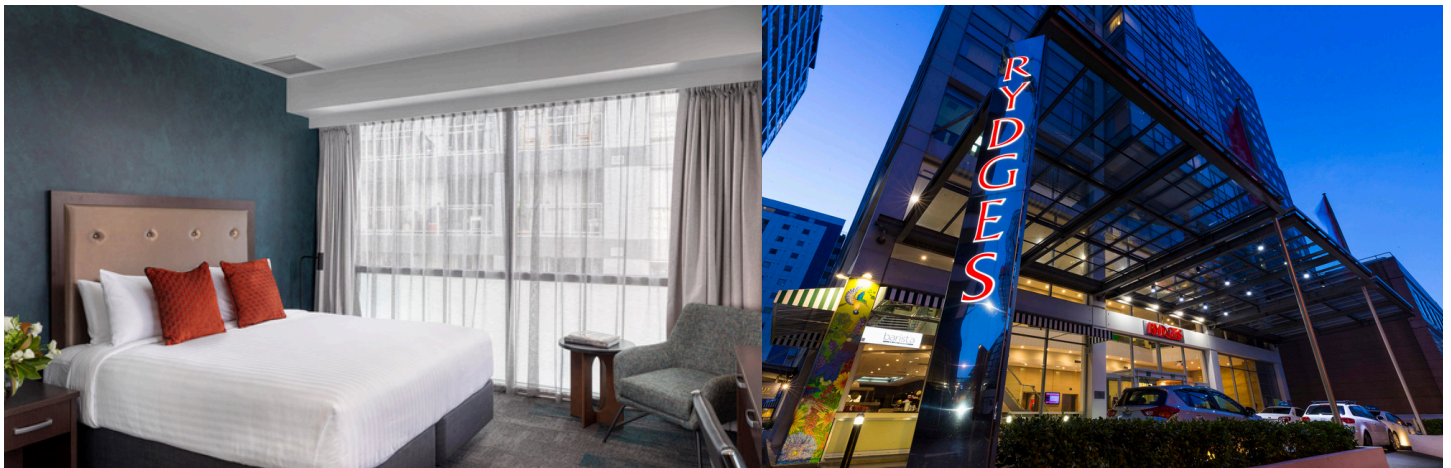
Unlimited high-speed WI-FI is included with this stylish and functional Superior room. Relax and recharge in the luxurious king size Dream bed with layered triple sheeting, feather and down duvets and sublime slumber pillows, plus an all tiled chic designed ensuite which includes a complimentary range of personal amenities. You can take care of business at the ergonomically designed glass desk workstation with high-back leather chair.

1 x King bed (maximum 2 people in room)

#### **6 minute walk to NZICC (450m)**

Car Parking: Valet parking \$55 per vehicle per night

Breakfast rate is additional @ \$30 per person



## **Swiss-Belsuites Victoria Park, Auckland (4 star)**

Prime City Centre Location with stunning views of the Victoria Park across the street or the Sky Tower.

Situated at the edge of the i-village compound, Swiss-Belsuites apartments are right next to restaurants, cafés and bars and the area hosts new events almost every weekend. The largest gym in Auckland, Les Mills, is a 2-minute walk away, and with a salon and convenience store next door, everything that you need is in easy access.

One of the few pet-friendly hotel apartments in the CBD, with the park right in front, adding to the fun.

### **Room type:**

#### **One Bedroom Apartment (65sqm)**

The one-bedroom suites are generously sized with a separate bedroom, living room, dining area, and floor-to-ceiling windows opening to a furnished balcony — perfect for soaking up city or park views.

1 x Queen bed or 1 x King bed or 2 x Single beds (maximum 2 people in room)

#### **Two Bedroom Apartment (71sqm)**

The two-bedroom suite provides two separate bedrooms, a comfortable living and dining area, a fully equipped kitchen and a furnished balcony.

2 x King beds (maximum 4 people in room)

In both room types you'll find all the comforts of home: a fully equipped kitchen (fridge, stove/oven, microwave), washer/dryer, generous storage, a 50" LCD TV and high-speed WiFi. The private bathroom offers a shower (plus bathrobes and slippers), and the room is sound-proofed for peace and quiet. Extras like daily housekeeping, air-conditioning/heating, in-room safe, and even pet-friendly and wheelchair-accessible options add thoughtful touches to round out a very complete stay.

### **8 minute walk to NZICC (550m)**

Car Parking: \$45 per night (first in first served)

Continental Breakfast with barista coffee for 1 person is included in room rate, additional can be pre ordered for \$17 per person





## **SkyCity Auckland (4 star)**

Escape to a hotel where exceptional experiences happen every day. A place where you can enjoy genuine Kiwi hospitality and modern, spacious accommodation.

Explore the sights and sounds of vibrant Auckland, including the iconic Sky Tower. Pamper yourself at rejuvenating spa facilities. Experience magnificent dining with over 20 restaurants, cafes and bars close by, not to mention theatres and the exciting SkyCity Casino. Before you return, relax and refresh with our world-class facilities and services, where your comfort is our priority.

### **Room Types:**

#### **Premium King Room (32sqm)**

Featuring designer bathrooms with luxurious amenities, the Premium rooms are modern and spacious.

1 x King Bed (maximum 2 people in room)

#### **Premium Twin Room (32sqm)**

Featuring designer bathrooms with luxurious amenities, the Premium rooms are modern and spacious.

2 x Single Beds (maximum 2 people in room)

### **3 minute walk to NZICC (300m)**

Car Parking: \$60 per night, valet parking | POA for self parking

Breakfast: \$45 per person (if bed and breakfast rate is not chosen)



## **Horizon Hotel (5 star)**

Imagine a place where glass blends into the sky, where technology knows what you need before you need it, where staff welcome returning friends. A place where business and pleasure walk hand in hand, where one switch turns everything off, where tried and true meets novel and new. A comfortable place where you can be with friends for a night out... or just simply be.

Looking out, you'll get lost in the views of Auckland city, where cityscapes turn to landscapes in seconds, while being ideally located right next to the New Zealand International Convention Centre (NZICC). Inside, hints of Aotearoa can be found in every corner of your spacious room, from locally crafted amenities, to New Zealand art throughout. Thoughtfully designed with horizon-like curves throughout the hotel, the rooms and suites offer everything you need, right when you need it.

### **Room Types:**

#### **Superior King Room (29sqm)**

Connected by soft textures, and opulent finishes, Superior Rooms are conveniently situated on lower floors, allowing for easy access to the laneway, connecting air bridges to the NZICC and local precincts extending out to the city. Locally influenced art and sculptures and crafted amenities give a nod to the natural landscape, connecting you to Aotearoa.

1 x King Bed (maximum 2 people in room)

#### **Superior Twin Room (29sqm)**

Connected by soft textures, and opulent finishes, Superior Rooms are conveniently situated on lower floors, allowing for easy access to the laneway, connecting air bridges to the NZICC and local precincts extending out to the city. Locally influenced art and sculptures and crafted amenities give a nod to the natural landscape, connecting you to Aotearoa.

2 x Single Beds (maximum 2 people in room)

### **1 minute walk to NZICC (100m)**

Car Parking: \$60 per night, valet parking | POA for self parking

Breakfast: \$45 per person (if bed and breakfast rate is not chosen)