

## Digital health skills for a safe, effective aged care workforce

---

Kerryn BUTLER-HENDERSON, and Kathleen GRAY, and Karen DAY

RMIT University, Melbourne, Victoria, AUSTRALIA

The University of Melbourne, Melbourne, Victoria, AUSTRALIA

The University of Auckland, Auckland, NEW ZEALAND





## Acknowledgement of Country, Australia

We acknowledge the Gadigal people of the Eora Nation on whose unceded lands we meet for this panel today.

We respectfully acknowledge their Ancestors and Elders, past and present. We also acknowledge any First Nations Peoples here today.

We also acknowledge the Traditional Custodians and their Ancestors of the lands and waters across Australia where we conduct our business.

## Haere mai, Aotearoa New Zealand

Ko Rangitoto te maunga e rū nei taku ngākau (*Rangitoto is the mountain that speaks to my heart*)

Ko Lucas Creek te awa e mahea nei aku māharahara (*Lucas Creek is the river that alleviates my worries*)

Nō Tamaki Makaurau ahau (I am from Auckland)

E mihi ana ki ngā tohu o nehe, o Tamaki Makaurau e noho nei au (/ *recognise the ancestral and spiritual landmarks of Auckland where I live*)

Nō reirā, tēnā koutou katoa (*Thus, my acknowledgement to you all*)



## Interactive activities

---

[https://miro.com/app/board/uXjVM5GPTRs=/?share\\_link\\_id=531839139449](https://miro.com/app/board/uXjVM5GPTRs=/?share_link_id=531839139449)





## Digital health skills for the aged care workforce

A video player interface showing a presentation slide. The slide has a dark blue background with a light blue geometric pattern of dots and lines. In the top left corner is the University of Melbourne logo. In the top right corner is a portrait of Professor Kathleen Gray with the text 'Ce D Transformation of Health' and 'CONNECTING DIGITAL INNOVATION TO HEALTH'. The main text on the slide reads 'Digital health skills for the aged care workforce: What will work for workers?'. At the bottom right, it says 'Professor Kathleen Gray OAM Medinfo, July 2023, Sydney'. A play button icon is centered over the text.

THE UNIVERSITY OF MELBOURNE

Ce D Transformation of Health  
CONNECTING DIGITAL INNOVATION TO HEALTH

Digital health skills for the aged care workforce:  
**What will work for workers?**

Professor Kathleen Gray OAM  
Medinfo, July 2023, Sydney



# Digitization of aged care workforce in Aotearoa New Zealand

Karen Day, RN, RM, PhD, FIAHSI

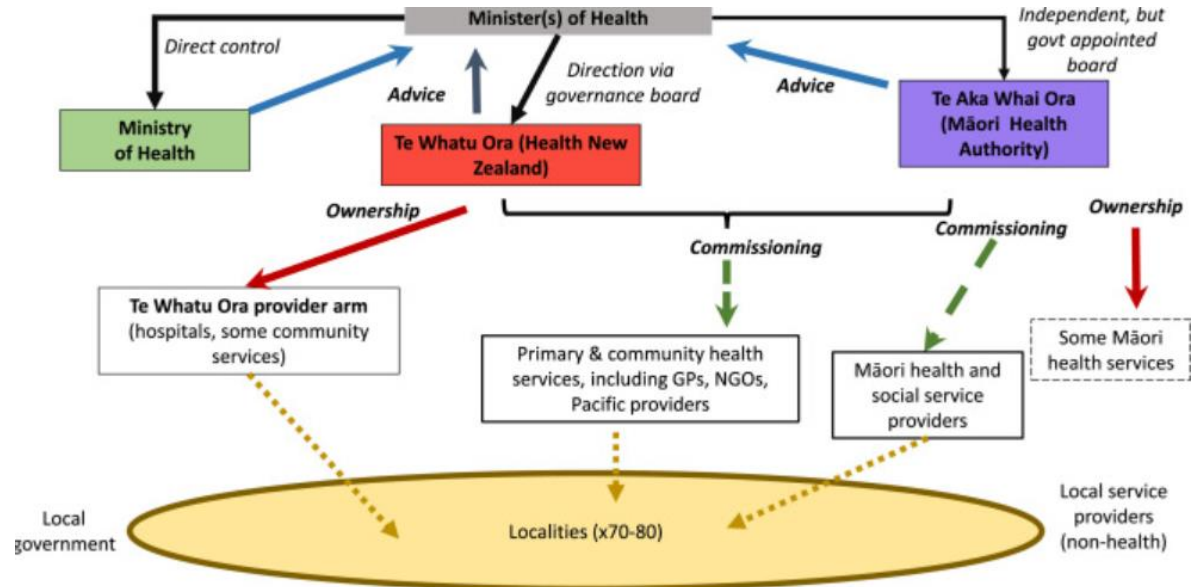


## Aotearoa New Zealand health system reform

20 District Health Boards  
centralised to Te Whatu Ora and Te  
Aka Whai Ora

People-centred and equity focused.

Localities – primary and community  
care merged







Te Whatu Ora  
Health New Zealand

## Digital Strategy at a Glance



Consolidation of technologies results in shift towards simplified competencies when intersecting with variety of services.

Range of aged care workers intersecting with variety of services. Includes consumers and their whanau

**Simplify & Unify**  
We work as one team to unify our people, processes & platforms and leverage our scale to deliver digital services that support the sector and release value.  
FY22 - 23 INITIATIVE: Improve interoperability of data and digital systems across the hospital network, and between primary, community and secondary care settings.

Digital and data are mission critical

People with long term conditions cross many service boundaries

People and whanau are central



## Digitised aged care work

- Focus: Ageing in place
- Digital citizen
- Digital inclusion

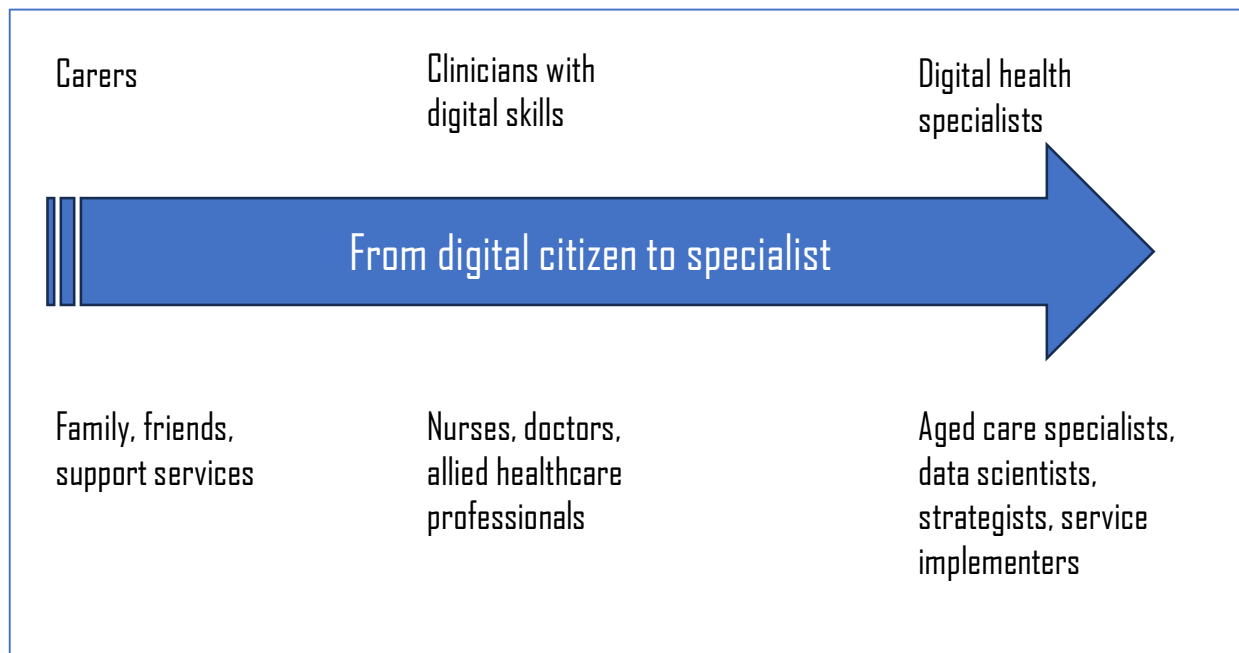






## Emerging tech: effect on workforce

- Patient portals
- Telemonitoring
- Aged assessment and analytics: interRAI
- Long term condition management
- Smart homes
- Robotics
- Automation





## Upskilling the workforce



Asynchronous learning



Workplace and simulation learning



Peer to peer learning



Nga mihi, thank you

Kerryn Butler-Henderson RMIT University

[Kerryn.Butler-Henderson@rmit.edu.au](mailto:Kerryn.Butler-Henderson@rmit.edu.au)

Kathleen Gray

University of Melbourne [kgray@unimelb.edu.au](mailto:kgray@unimelb.edu.au)

Karen Day

University of Auckland [k.day@auckland.ac.nz](mailto:k.day@auckland.ac.nz)