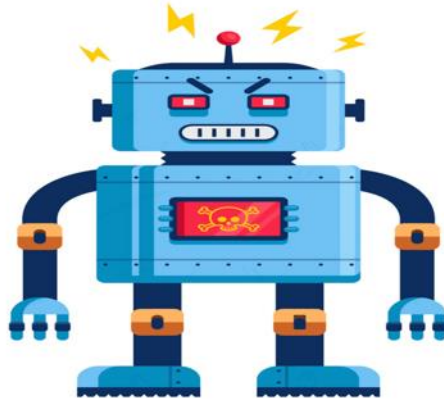


AI + Medicine



Prof. Toby Walsh

Chief Scientist @ AI Institute
UNSW Sydney



ARTIFICIAL
INTELLIGENCE



ChatGPT

C11 (L) TOTAL

C1

25

	A	B	C	D
1	ITEM	NO.	UNIT	COST
1	RAKE	4	12.95	51.80
2	TONER	25	4.95	123.75
3	UTR	2	4.95	9.90
4				
5				
6				
7				
8				
9				
10				
11				
12				
13				
14				
15				
16				
17				
18				
19				
20				
21				
22				
23				
24				
25				
26				
27				
28				
29				
30				
31				
32				
33				
34				
35				
36				
37				
38				
39				
40				
41				
42				
43				
44				
45				
46				
47				
48				
49				
50				
51				
52				
53				
54				
55				
56				
57				
58				
59				
60				
61				
62				
63				
64				
65				
66				
67				
68				
69				
70				
71				
72				
73				
74				
75				
76				
77				
78				
79				
80				
81				
82				
83				
84				
85				
86				
87				
88				
89				
90				
91				
92				
93				
94				
95				
96				
97				
98				
99				
100				
101				
102				
103				
104				
105				
106				
107				
108				
109				
110				
111				
112				
113				
114				
115				
116				
117				
118				
119				
120				
121				
122				
123				
124				
125				
126				
127				
128				
129				
130				
131				
132				
133				
134				
135				
136				
137				
138				
139				
140				
141				
142				
143				
144				
145				
146				
147				
148				
149				
150				
151				
152				
153				
154				
155				
156				
157				
158				
159				
160				
161				
162				
163				
164				
165				
166				
167				
168				
169				
170				
171				
172				
173				
174				
175				
176				
177				
178				
179				
180				
181				
182				
183				
184				
185				
186				
187				
188				
189				
190				
191				
192				
193				
194				
195				
196				
197				
198				
199				
200				
201				
202				
203				
204				
205				
206				
207				
208				
209				
210				
211				
212				
213				
214				
215				
216				
217				
218				
219				
220				
221				
222				
223				
224				
225				
226				
227				
228				
229				
230				
231				
232				
233				
234				
235				
236				
237				
238				
239				
240				
241				
242				
243				
244				
245				
246				
247				
248				
249				
250				
251				
252				
253				
254				
255				
256				
257				
258				
259				
260				
261				
262				
263				
264				
265				
266				
267				
268				
269				
270				
271				
272				
273				
274				
275				
276				
277				
278				
279				
280				
281				
282				
283				
284				
285				
286				
287				
288				
289				
290				
291				
292				
293				
294				
295				
296				
297				
298				
299				
300				
301				
302				
303				
304				
305				
306				
307				
308				
309				
310				
311				
312				
313				
314				
315				
316				
317				
318				
319				
320				
321				
322				
323				
324				
325				
326				
327				
328				
329				
330				
331				
332				
333				
334				
335				
336				
337				
338				
339				
340				
341				
342				
343				
344				
345				
346				
347				
348				
349				
350				
351				
352				
353				
354				
355				
356				
357				
358				
359				
360				
361				
362				
363				
364				
365				
366				
367				
368				
369				
370				
371				
372				
373				
374				
375				
376				
377				
378				
379				
380				
381				
382				
383				
384				
385				
386				
387				
388				
389				
390				
391				
392				
393				
394				
395				
396				
397				
398				
399				
400				
401				
402				
403				
404				
405				
406				
407				
408				
409</				

Daniel Bricklin and Robert Frankston,
VISICALC 1979-1985





JOAQUIN PHOENIX

AMY ADAMS

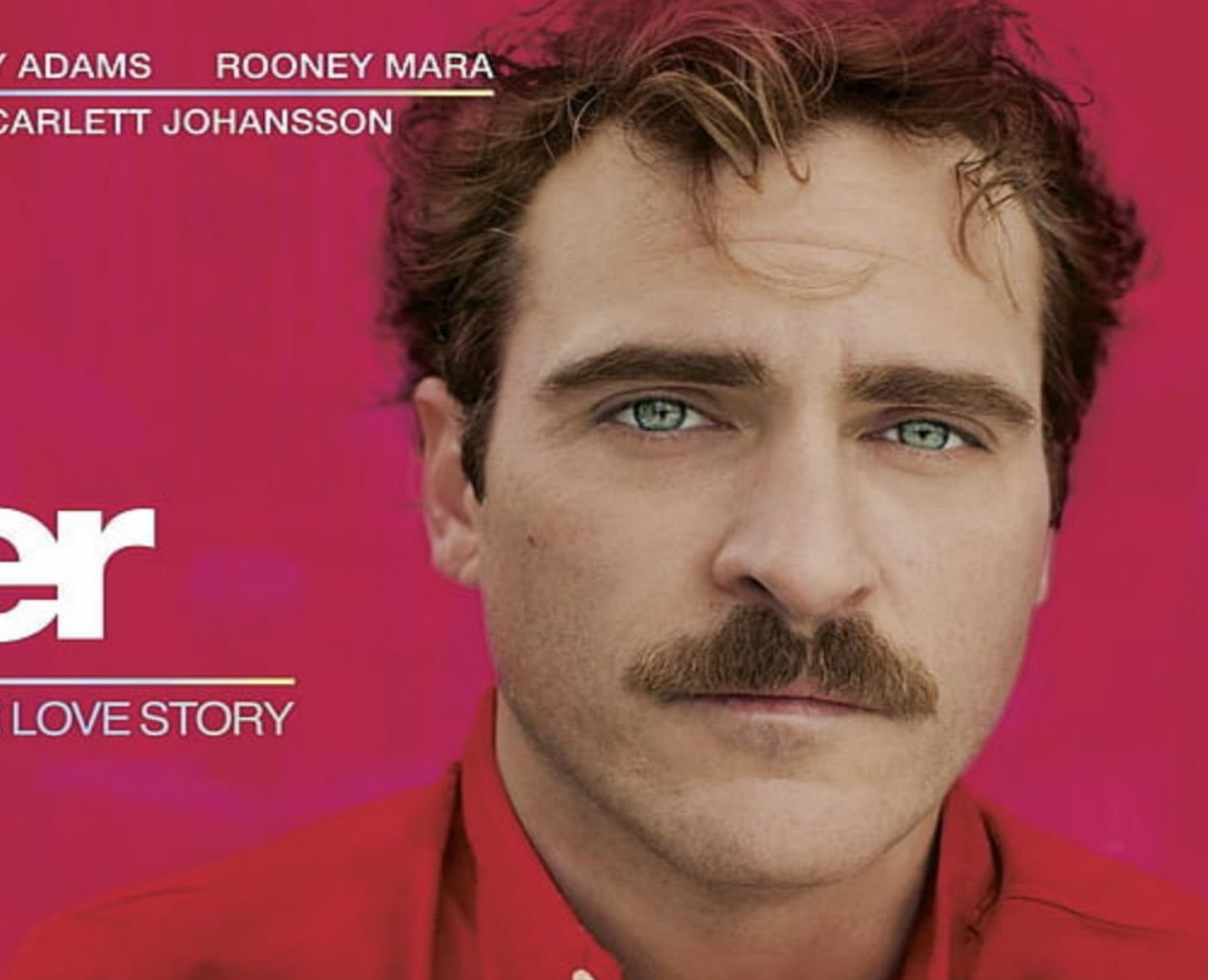
ROONEY MARA

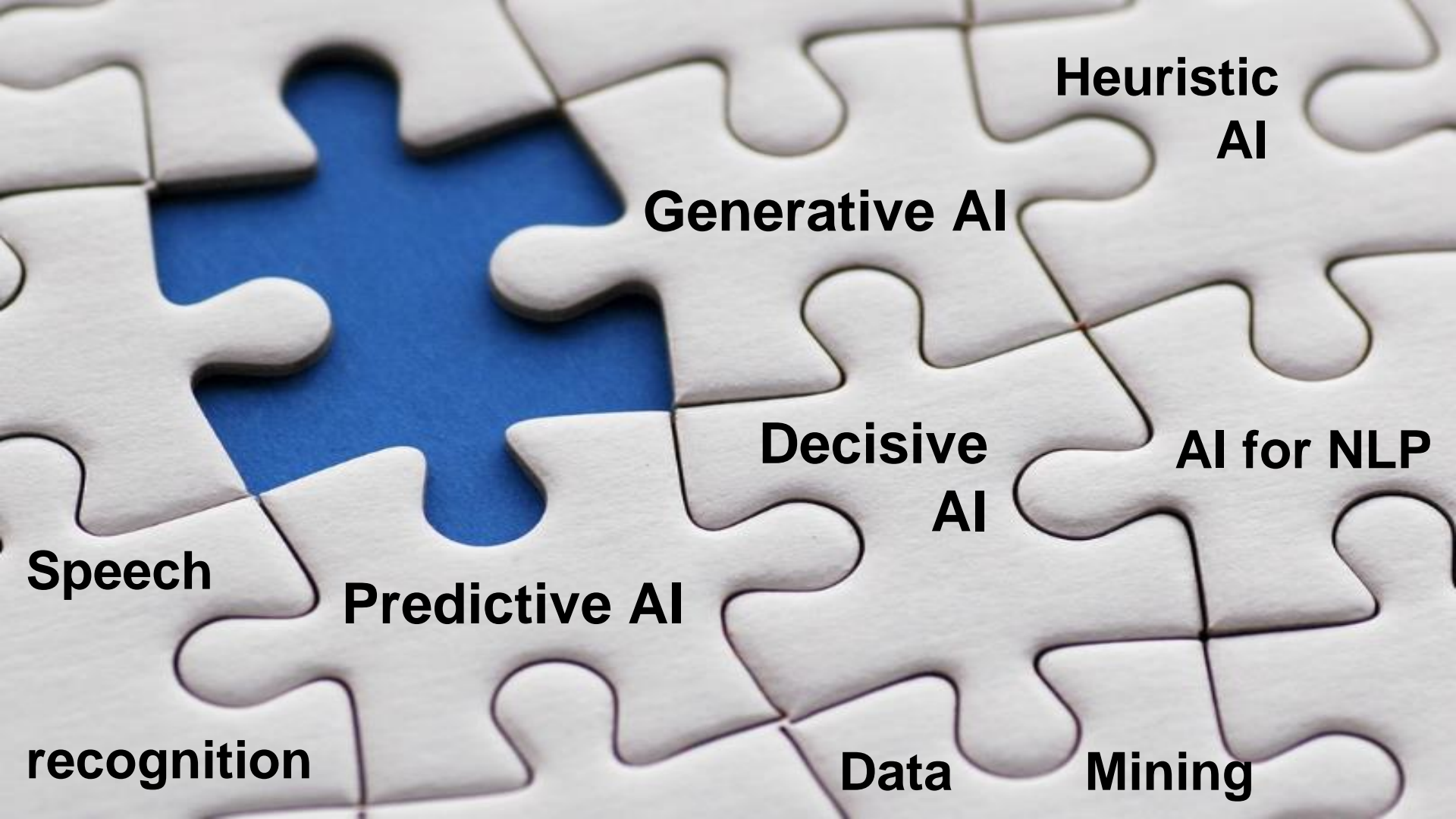
OLIVIA WILDE

AND SCARLETT JOHANSSON

her

A SPIKE JONZE LOVE STORY





**Heuristic
AI**

Generative AI

**Decisive
AI**

AI for NLP

Predictive AI

Data

Mining

Speech

recognition



FINANCE · GOOGLE

A senior Google engineer just referenced Warren Buffett's decades-old economic moat theory—warning the company doesn't have one in A.I.

BY WILL DANIEL

May 5, 2023 at 10:34 PM GMT+4



Flugverspätung?



Unsere erfahrenen
Reiserechtsexperten holen Ihnen
Ihr Geld zurück!

Most Popular

Reddit will begin charging for access to its API

Kyle Wiggers @kyle_l_wiggers / 5:08 AM GMT+10 • April 19, 2023

 [Comment](#)





PARESH DAVE

BUSINESS APR 20, 2023 5:19 PM

Stack Overflow Will Charge AI Giants for Training Data

The programmer Q&A site joins Reddit in demanding compensation when its data is used to train algorithms and ChatGPT-style bots





[bbc.com](https://www.bbc.com)

Elon Musk threatens to sue Microsoft over Twitter data

The multi-billionaire was responding to the tech giant's plan to drop Twitter from its advertising platform.

OpenAI's ChatGPT chatbot blocked in Italy over privacy concerns



Generative AI refers to a class of artificial intelligence (AI) models that generate new data, such as images, text, or music, that is similar to the data it was trained on. Generative models learn to recognize patterns and relationships in the input data and then use this knowledge to generate new data that is similar to the training data but is not identical.

There are many different types of generative models, including Variational Autoencoders (VAEs), Generative Adversarial Networks (GANs), and Autoregressive models. VAEs learn a probabilistic model of the input data and generate new data samples by sampling from this model. GANs consist of a generator and a discriminator, that work together to generate data that is indistinguishable from the real data. Autoregressive models generate data by sampling from a probability distribution that is conditioned on the data generated so far.

Generative AI has many applications, including generating synthetic images, text, or audio data for training machine learning models. However, there are also concerns about the potential for deepfakes, which can be used to create realistic but false content.



OpenAI

OpenAI Unveils Multimodal LLM GPT-4: The Most Advanced AI Yet



Updated on March 18, 2023

By Alex McFarland



SEARCH

What Are LL
Concern, & I

LAION in Op
Urge Call to

Finding Rea
Companies ,
Intelligence

+ Understanding?

Cat painted by Picasso

Generate image

Enter a negative prompt



Picasso painted by a cat

Generate image

Enter a negative prompt

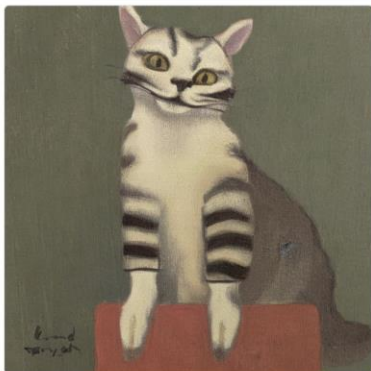


+ Understanding?

Painting of a cat in the style of Rembrandt

Enter a negative prompt

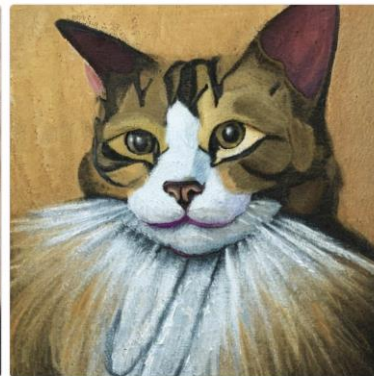
Generate image



Painting of a cat in the style of anyone but Rembrandt

Enter a negative prompt

Generate image





Reasoning?



I have 5L and 2L jugs. How do I measure out 3L?



To measure out exactly 3 liters of liquid using a 5-liter and a 2-liter jug, you can follow these steps:



1. Fill the 5-liter jug to its maximum capacity.
2. Pour the contents of the 5-liter jug into the 2-liter jug. This will leave you with 3 liters in the 5-liter jug.
3. Empty the 2-liter jug completely.
4. Pour the remaining 3 liters from the 5-liter jug back into the 2-liter jug. Now the 2-liter jug will have 3 liters of liquid in it.
5. Refill the 5-liter jug to its maximum capacity again.
6. Pour the contents of the 5-liter jug into the 2-liter jug until it is completely filled. At this point, the 2-liter jug will be holding 2 liters of liquid, and the 5-liter jug will have $5 - 2 = 3$ liters remaining.
7. Empty the 2-liter jug.
8. Transfer the remaining 3 liters from the 5-liter jug to the empty 2-liter jug.
9. Refill the 5-liter jug to its maximum capacity.
10. Pour 1 liter from the 5-liter jug into the 2-liter jug, which already contains 3 liters. This will leave 4 liters in the 5-liter jug.
11. Now, the 2-liter jug will contain exactly 3 liters of liquid.

By following these steps, you can accurately measure out 3 liters of liquid using a 5-liter and a 2-liter jug.



Granny Smith	85.6%
iPod	0.4%
library	0.0%
pizza	0.0%
toaster	0.0%
dough	0.1%



Granny Smith	0.1%
iPod	99.7%
library	0.0%
pizza	0.0%
toaster	0.0%
dough	0.0%



Brittle



Stop



Yield



Speed Limit



Bias

CEO on the phone

Generate image





It's not all BIG data





🔍 professors are |



- 🔍 professors are **mean**
- 🔍 professors are **doctors**
- 🔍 professors are **prejudiced too**
- 🔍 professors are **overrated**
- 🔍 professors are **burning out**
- 🔍 professors are **overpaid**
- 🔍 professors are **rude**
- 🔍 professors are **bad teachers**
- 🔍 professors are **puzzled by rubik's cube**

Google Search

I'm Feeling Lucky

Report inappropriate predictions



climate change is |



climate change is **not real**

climate change is **a hoax**

climate change is **real**

climate change is **a myth**

Google Search

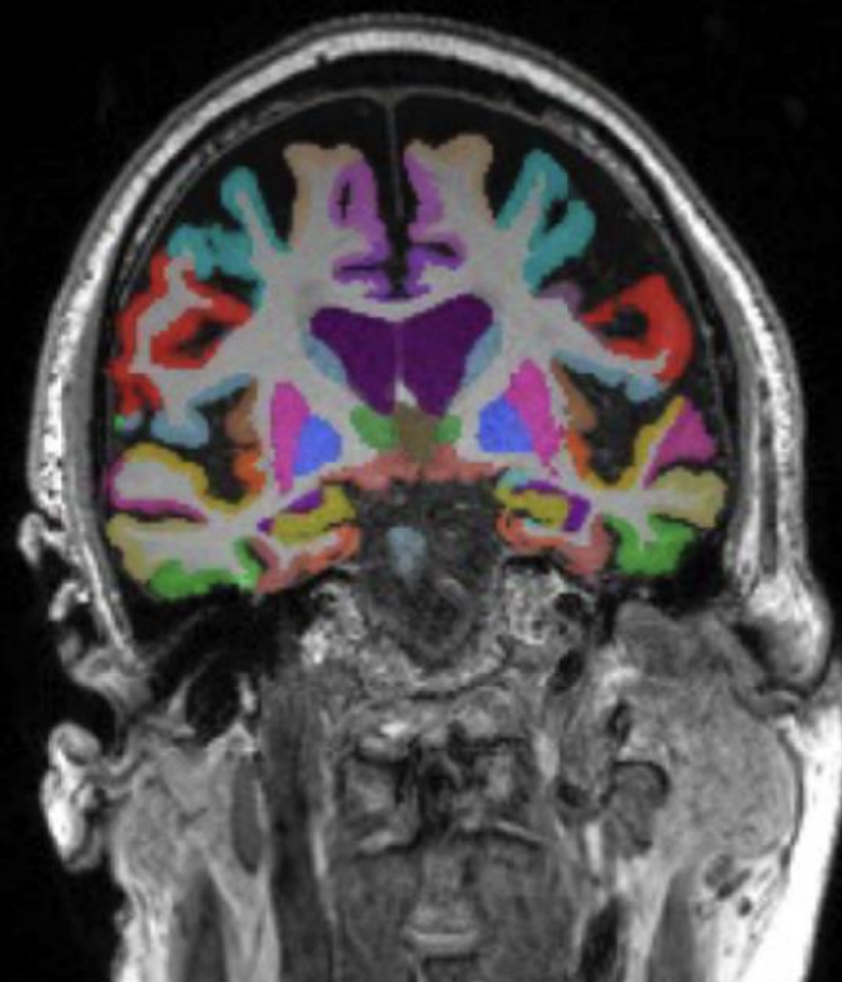
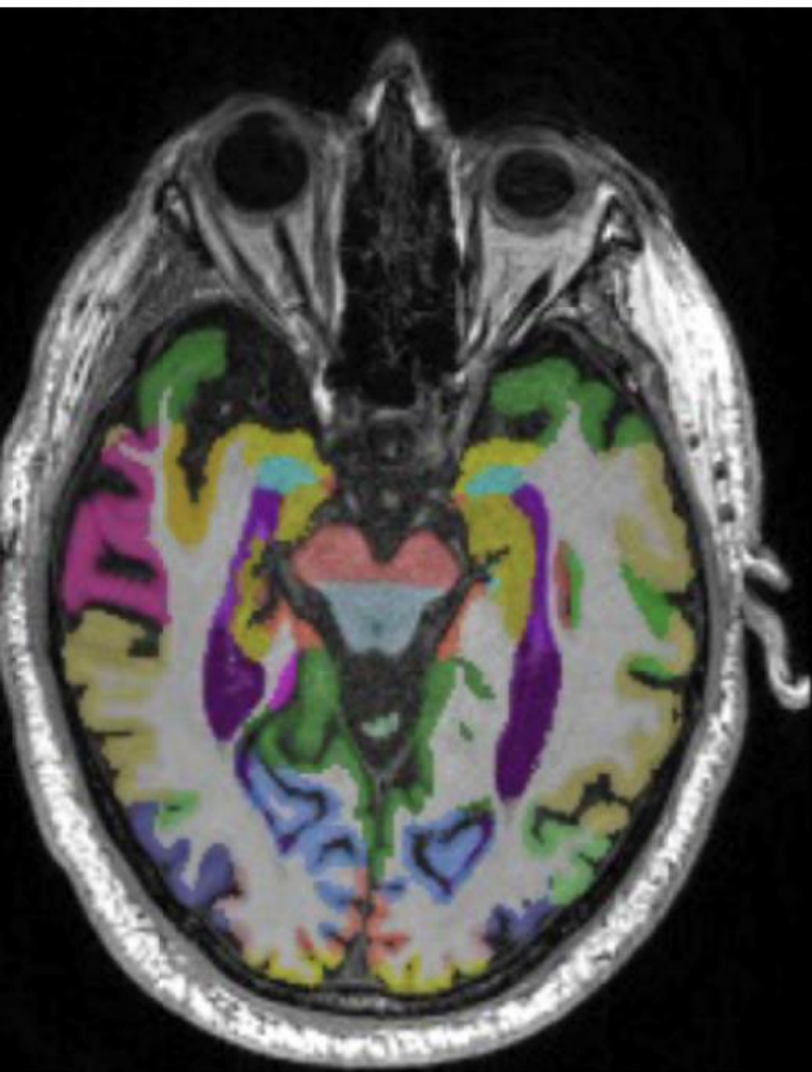
I'm Feeling Lucky

Report inappropriate predictions



The start of every AI project

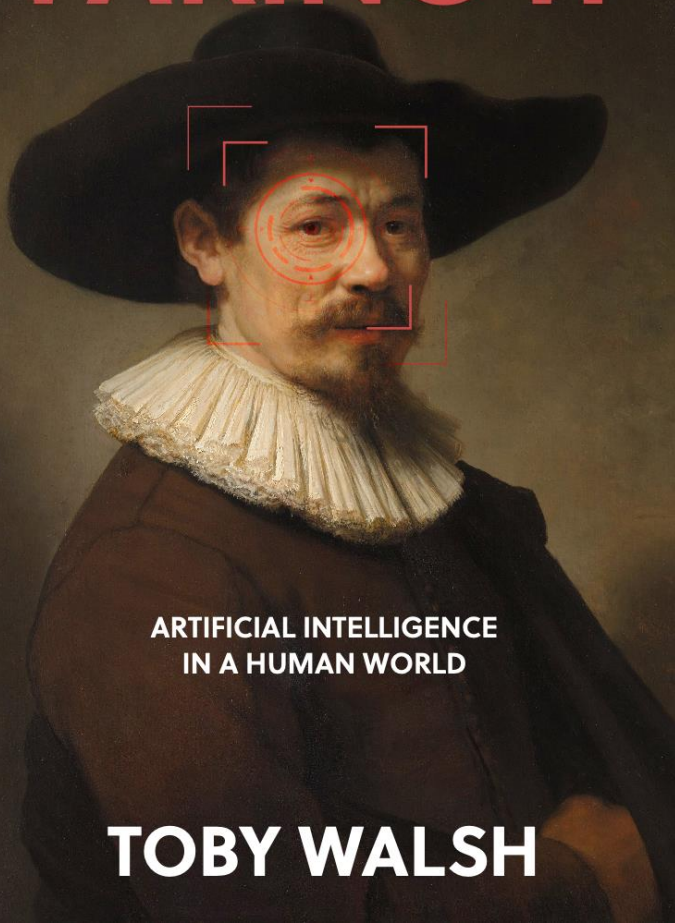




	1	2	3	4	5	6	7	8	9	10	11	12	13	14	15	16	17	18	19	20	21
Nurse 1	N			D	D	D			N	N	N	N			D	D	D				N
Nurse 2			D	D	D			N	N	N	N			D	D	D			N	N	N
Nurse 3	D			N	N	N				D	D	D			N	N	N			D	D
Nurse 4		N	N	N			D	D	D			N	N	N			D	D	D	D	
Nurse 5	N	N	N			D	D	D	D				N	N			D	D	D		
Nurse 6		D	D	D			N	N	N				D	D	D	D			N	N	N
Nurse 7			N	N	N			D	D	D			N	N	N			D	D	D	
Nurse 8	D	D	D			N	N	N			D	D	D	D				N	N		
Nurse 9	N	N			D	D	D			N	N	N			N	N	N	N			D
Nurse 10	D	D			N	N	N			D	D	D	D			N	N	N			D



FAKING IT



ARTIFICIAL INTELLIGENCE
IN A HUMAN WORLD

TOBY WALSH

MACHINES BEHAVING BADLY

THE
MORALITY
OF AI



TOBY
WALSH



2062

THE WORLD THAT AI MADE

'A COMPELLING INVITATION TO IMAGINE THE FUTURE WE WANT.'
—BRIAN CHRISTIAN, AUTHOR OF *THE MOST HUMAN HUMAN*

TOBY WALSH