



Twitter: @shaw\_toria

LinkedIn:

<https://www.linkedin.com/in/toriashawmorawski>

## Elevate Patient Care: Translating data into equitable care outcomes

---

Toria Shaw Morawski, MSW, IICDP

CEO, Certified Diversity Practitioner,  
Workforce Developer

*Globally Empowered*





## Acknowledgment of Country

- I acknowledge and pay respect to the Traditional Owners, Elders, and Knowledge Holders of the land that we are on – in all regions of this country. Thank you to the Aboriginal and Torres Strait Islander people and their fellow Australians.
- Labour acknowledgement: Thank you to the staff who are taking care of this space.

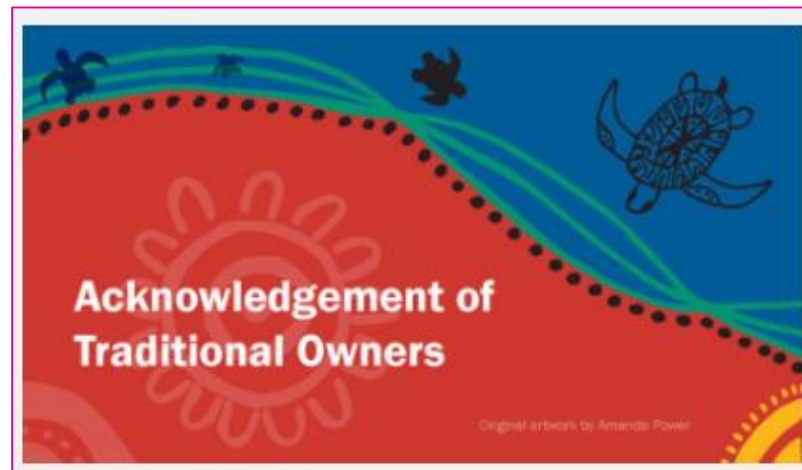


Image from [Acknowledgement of Traditional Owners :: QUT](#)



## Presentation Overview

---

- Nurses and midwives: Largest professional healthcare groups globally
- Critical in translating data into actionable insights for care decisions
- Data is the key to understanding disparities and improving outcomes
- Key role with SDoH data integration into workflows
- Role of interprofessional care teams
- Examples of allyship for high-quality care regardless of SDoH



## SDoH = Critical to Data Translation

- The conditions in which people are born, grow, live, work, and age
- Factors play a significant role in influencing individuals' health and well-being
- SDoH impact is crucial for understanding the broader context of care delivery
- Translating data requires considering SDoH factors

### Social Determinants of Health

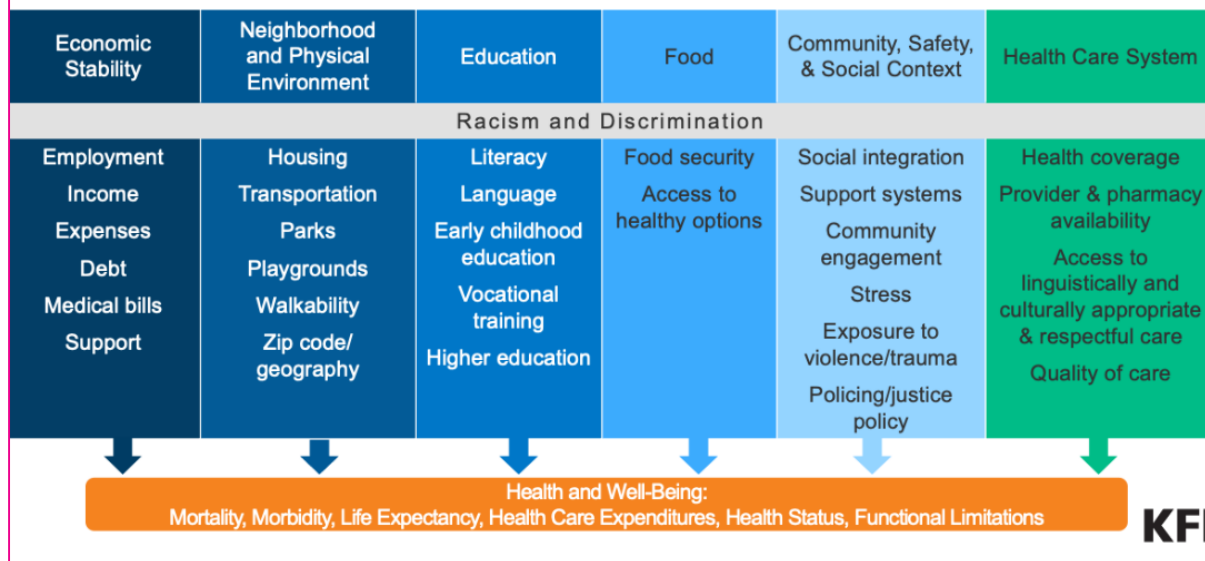




## Disparities = Inequities Defined

- “A particular type of health difference that is linked with social, economic, and/or environmental disadvantage”
- Adversely affects those who have greater obstacles to health

### Health Disparities are Driven by Social and Economic Inequities



KFF





## Disparities = Inequities, cont'd

- Disparities challenged by discriminatory practices and income inequality
- Analysing data helps identify patterns and disparities
- Integrating SDoH into data analysis promotes equitable care

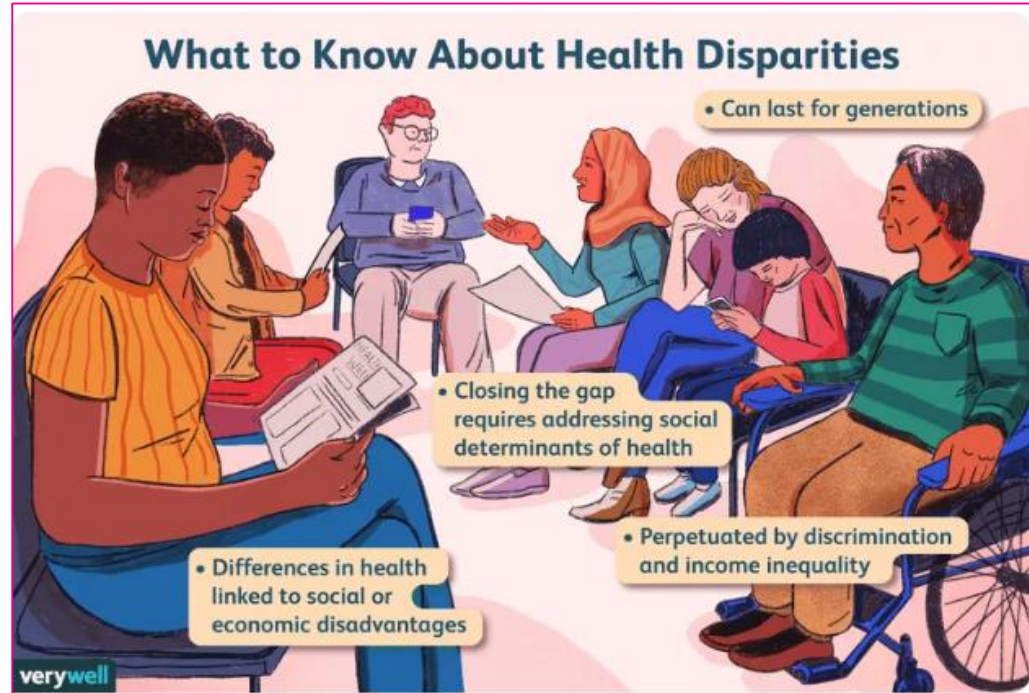


Image from verywell | Dennis Madamba



## Cultural Competence

*Cultural competence* is the ability to provide care that is respectful, sensitive, and responsive to cultural beliefs, values, practices, and patient needs





## Data, Information, Knowledge = Essential Tools

- **Data** provides objective insights to assess, identify disparities, and understand the specific needs of a population
- **Information** enables meaningful interventions
- **Knowledge** drives informed decision-making derived from data and information, empowering nurses and midwives to make better decisions





## Essential Tools, cont'd

- **Identifying and addressing disparities:**  
Gaps in access, quality, and outcomes across different populations
- **Continuous learning and improvement:**  
Targeted interventions promote continuous improvement for all

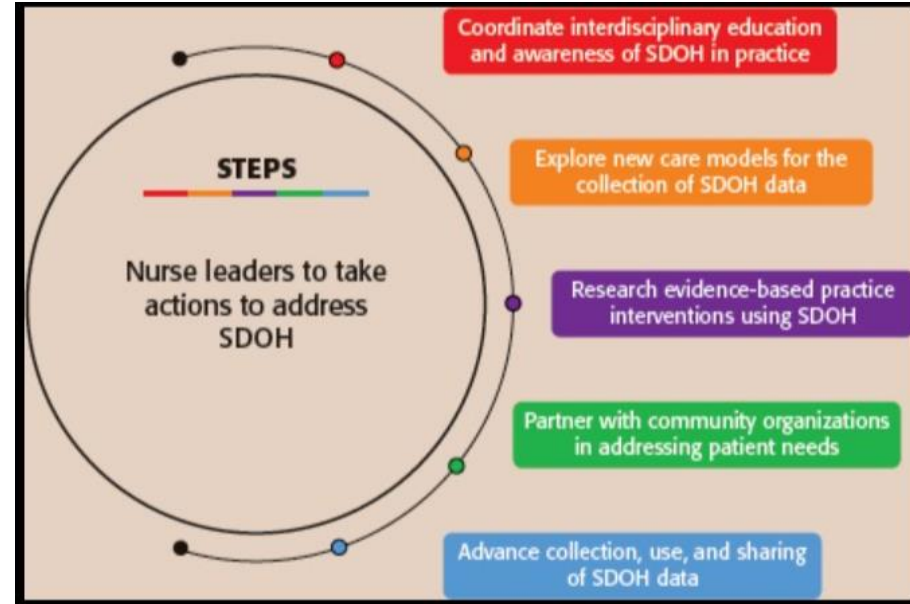


Source: Better Bike Share Partnership. Johns Hopkins Health Equity Hub.



## Role in Addressing SDoH

- Recognizing and helping patients manage SDoH
- SDoH screening tools: No need to recreate the wheel
- Action steps to address SDoH
- *Acknowledgement:* Global nursing shortage has resulted in overwhelming workloads; this pressing issue deserves attention!

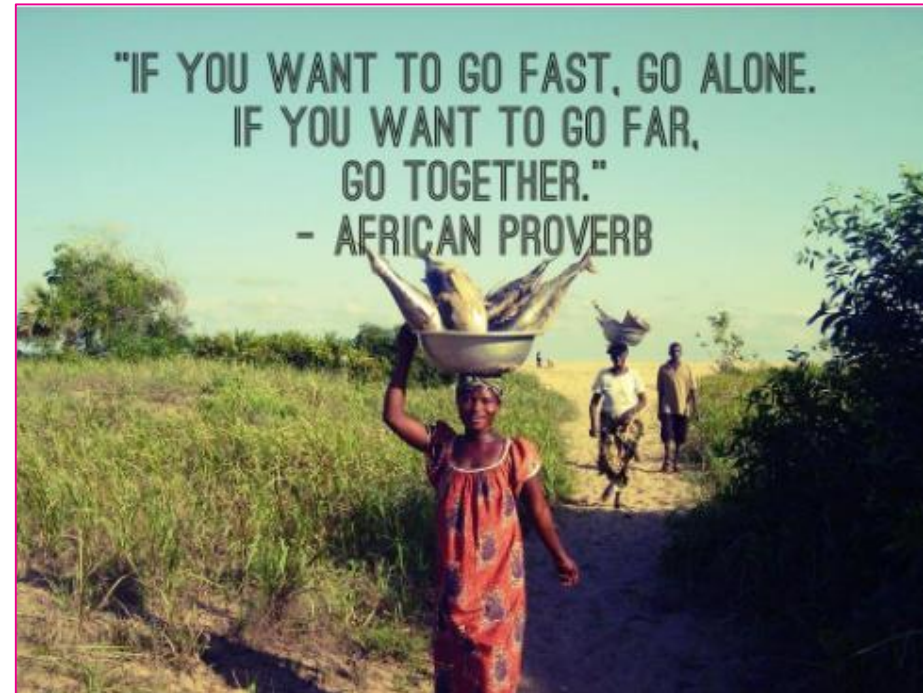


**Source:** Tiase, Victoria MSN, RN-BC; Crookston, Cathryn Degraff BSN, RN; Schoenbaum, Anna DNP, MS, RN-BC; Valu, Madelynn MPH, RD. Nurses' role in addressing social determinants of health. *Nursing* 52(4):p 32-37, April 2022. | DOI: 10.1097/01.NURSE.0000823284.16666.96



## The Importance of Allyship

- Enhanced data collection and analysis
- Holistic understanding of patient care
- Identification of patterns and trends
- Shared accountability and responsibility
- Interprofessional collaboration





## Lifelong Professional Development & Upskilling

- Keep pace with evolving practices and technological advancements
- Harness the power of new tools and technologies
- Stay on top of emerging trends in data analysis and management
- Informs care practices
- Facilitates data literacy
- Promotes interprofessional collaboration

Continuous personal and professional development is your key to the future.

A background image of a snow-capped mountain range under a starry night sky. A quote is overlaid in a semi-transparent box.

Brian Tracy





## Thank You!



*Let's stay connected!*

- Twitter: [@Shaw\\_Toria](https://twitter.com/Shaw_Toria)
- LinkedIn: <https://www.linkedin.com/in/toriashawmorawski>
- Email: [tori@globallyempowerd.com](mailto:tori@globallyempowerd.com)
- Website: <https://globallyempowered.com/>



## Resources/References

---

- [Disparities in Health and Health Care: 5 Key Questions and Answers | KFF](#)
- [Health Disparities: Definition, Causes, and Impact \(verywellhealth.com\)](#)
- [Nurses' role in addressing social determinants of health : Nursing2023 \(lww.com\)](#)
- [Medicaid and Social Determinants of Health \(rwjf.org\)](#)
- [3 Data-Driven Keys to Address Health Equity | AHA](#)