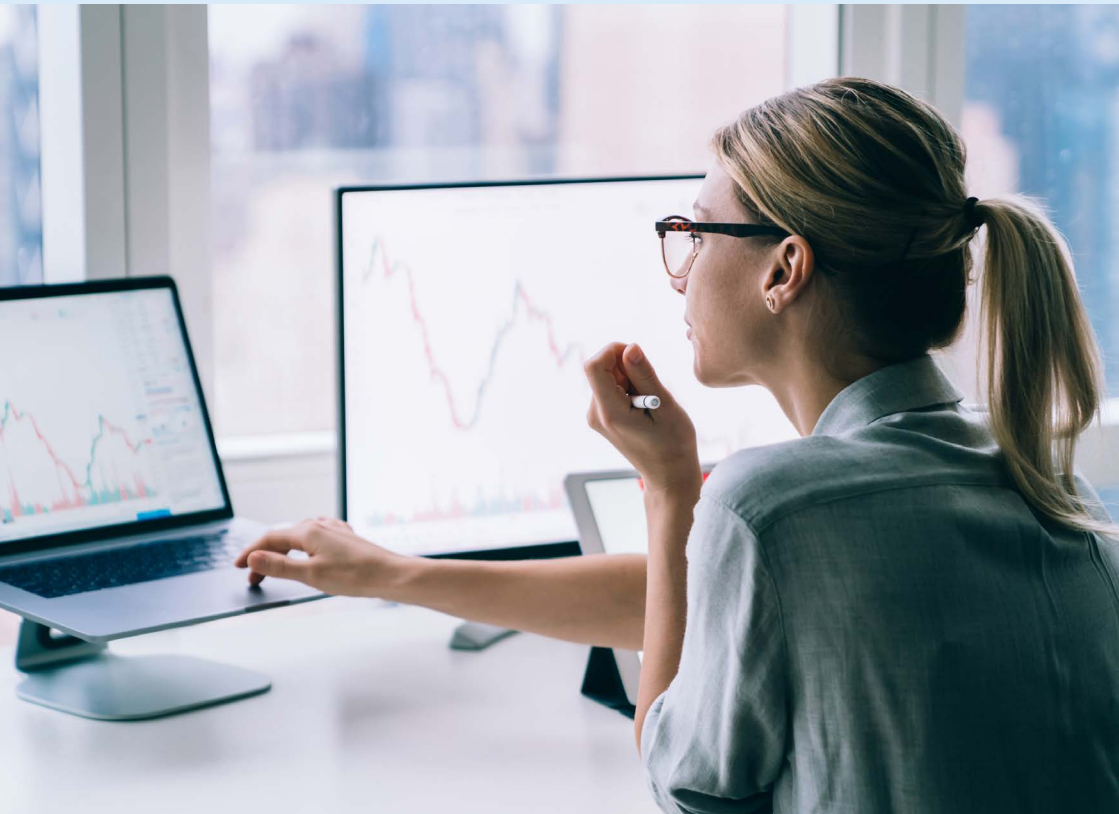




# NSW Health Enterprise Data Lake



# The Challenge

NSW Health is facing a growing demand for access to data from our frontline systems to support decision making, enhance clinical care and improve organisational performance. However, obtaining access to healthcare data and gaining a comprehensive understanding of this data has been challenging due to the ICT architecture and the use of proprietary tools.

Each ICT system within NSW Health, whether clinical or non-clinical, maintains its data in a live database. In the past, data extractions had to be performed on these live systems. This required very careful planning to manage the risks of reduced system performance and increased downtime. It was also very challenging to obtain a unified statewide view of the data which is essential for comprehensive insights and advanced analytics.

# The Solution

The NSW Health Enterprise Data Lake is a centralised solution that addresses all these challenges. The platform was designed to make the process of data extraction faster and easier.

As a centralised solution, the data lake consolidates data from various sources in near real-time, presenting a significant breakthrough for data science, machine learning, artificial intelligence and big data analytics.

With the addition of the Data Analytics Platform (DAP), a secure analytical platform that directly sources data from the data lake, teams can access advanced analytics tools to support their research initiatives.

The data lake currently serves 70+ users who are working on a range of clinical and corporate use cases for improved patient outcomes across NSW Health.

## Customer testimonial:

“The NSW Health Enterprise Data Lake has allowed access to 14 years of surgery data within minutes. Using the Data Analytics Platform, we have identified numerous opportunities for us to focus on to improve patient care.”

*Mauricio Olivera, Business Analytics Manager, Southern NSW Local Health District*



## Find out more:

Search ‘data lake’ at [ehealth.nsw.gov.au](https://ehealth.nsw.gov.au) or you can contact:

- For NSW Health organisations looking to procure, contact your organisation’s eHealth NSW Customer Account Manager.
- For research enquiries: [EHNSW-Research@health.nsw.gov.au](mailto:EHNSW-Research@health.nsw.gov.au)
- For supplier, partnering and tendering enquiries: [EHNSW-HealthTechnologyContracts@health.nsw.gov.au](mailto:EHNSW-HealthTechnologyContracts@health.nsw.gov.au)