

Comarch Sleep Polygraph

Innovation in the diagnosis of sleep apnea



Innovation in the diagnosis of sleep apnea

Sleep apnea, i.e. repeated complete stopping of breathing during sleep for more than 10 seconds or significant shortness of breath, affects up to 8% of the entire population. If left untreated, the condition can lead to serious health problems such as heart attack, hypertension, diabetes or cognitive impairment.

Among the most common symptoms of sleep apnea are:



Frequent, sudden waking up at night, which can be accompanied by anxiety



Snoring



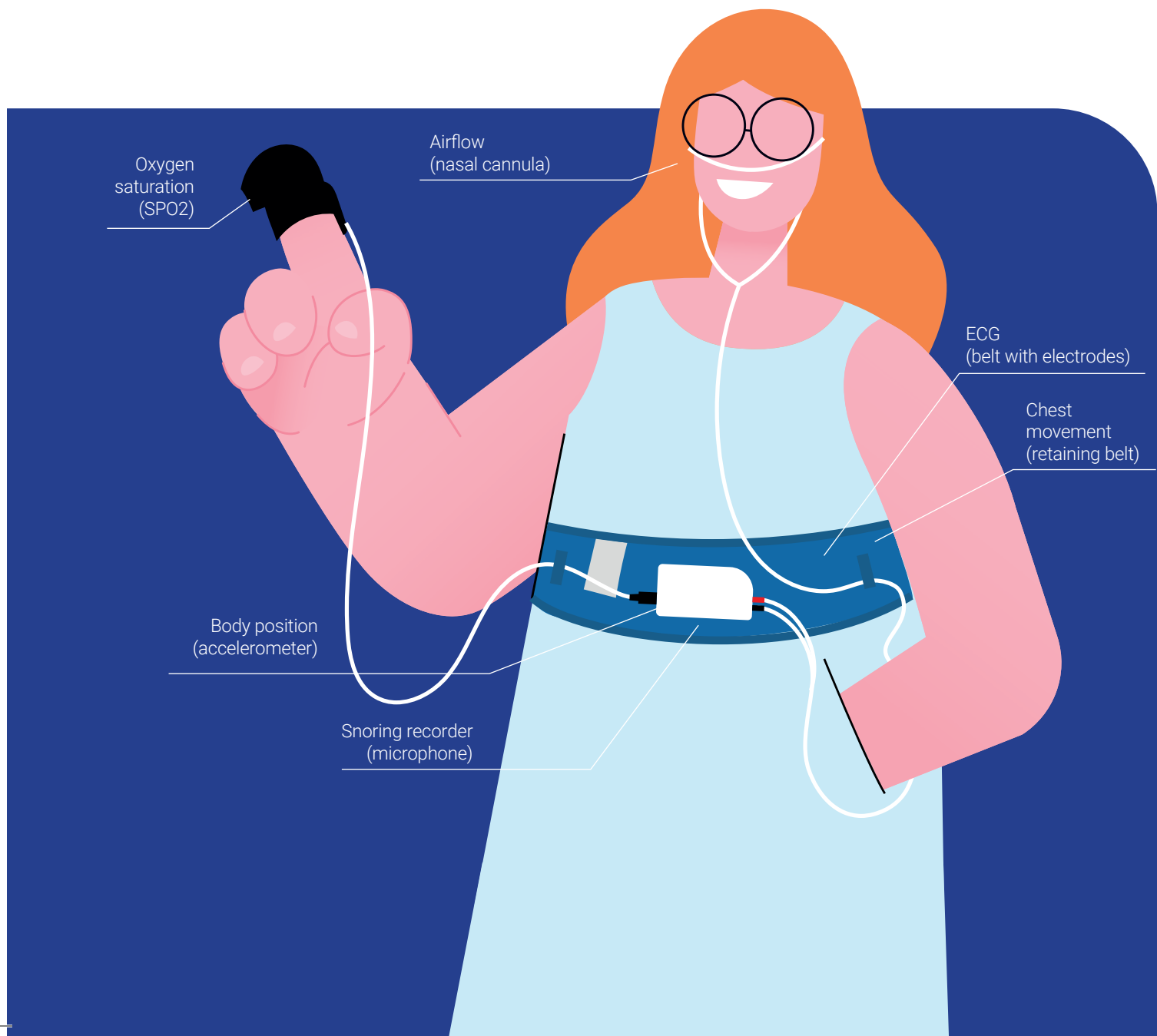
Palpitations



Heartburn



Persistent fatigue during the day



How does it work?

The examination using Comarch Sleep Polygraph does not require hospitalization - it is performed at night, in the patient's home. The device allows remote transmission of recorded vital functions to the platform for initial determination of apnea and shortness of breath. Artificial intelligence (AI) algorithms help in making a diagnosis.

The solution consists of several simple devices integrated with each other. The whole has been designed specifically for the safety and comfort of patients, so that the examination is not only accurate, but also comfortable.



Recorder



Docking station



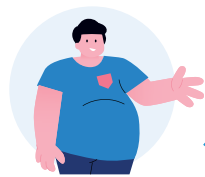
Pulse oximeter



Nasal cannula



Belt with built-in ECG electrodes and respiratory stress sensor



Overweight and obese people

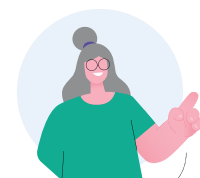


Elderly



Support for medical personnel in examining:

Comarch Sleep Polygraph can significantly facilitate the process of diagnosis and examination of patients suffering from sleep apnea.



Postmenopausal women



Men over 40 years of age



Patients suffering from chronic diseases

Comarch S.A.

Comarch S.A. is an international company with over 25 years of global experience. We are an end-to-end IT healthcare provider, driven by our customer needs, always ready to deliver a tailored solution while staying true to our core values: being flexible and maintaining the happiness of the end-user. We offer a comprehensive ecosystem of products, consisting of EHR, telemedicine, hospital and medical AI clouds. Integration of these platforms ensures coordinated healthcare and supports patients, their families, and medical personnel.

Copyright © Comarch S.A. 2023. All rights reserved.
30.05.2023, version 1.0

www.healthcare.comarch.com

