

SNOMED
International

Reaching beyond healthcare boundaries: Social care content in SNOMED CT

Cathy Richardson

Senior Terminologist
SNOMED International





Overview

- SNOMED International
- What is SNOMED CT
- Why extend into Social Care
- Member Survey
- Social Care Pilot
- Ongoing Work





About SNOMED International

A not-for-profit organization that owns and maintains SNOMED CT

Member-focused

48 Members globally
Active stakeholder engagement

Used in over 80 countries worldwide

Established to build and strengthen SNOMED CT, other health terminologies and related products

Mission

to sustainably produce a global clinical vocabulary and other services that enables the clear exchange and analysis of health information for all



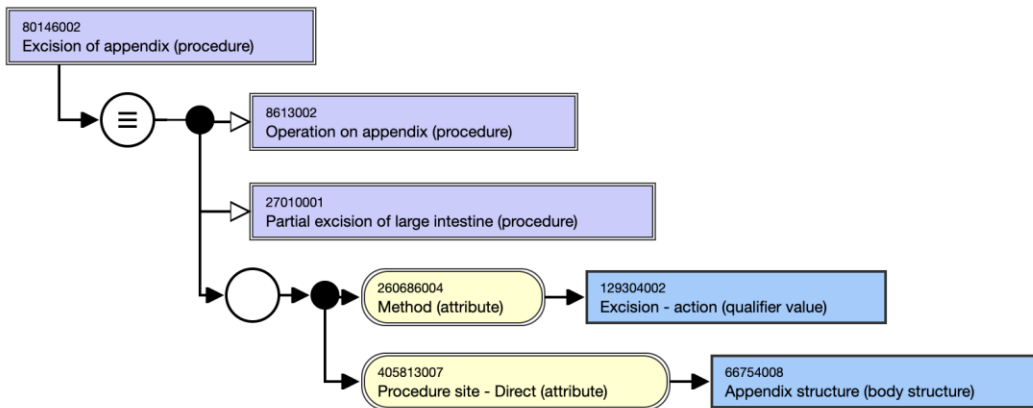


What is SNOMED CT

- Comprehensive reference clinical terminology
 - Over 360,000 international concepts
- Validation of clinical content
- Built using description logic
- Provides a standardized way to represent meaning
- Mapped to other international standards
- Extendable – to meet national/local requirements



SNOMED CT



- SNOMED CT Concept (SNOMED RT+CTV3)
 - Body structure (body structure)
 - Clinical finding (finding)
 - Environment or geographical location (environment / location)
 - Event (event)
 - Observable entity (observable entity)
 - Organism (organism)
 - Pharmaceutical / biologic product (product)
 - Physical force (physical force)
 - Physical object (physical object)
 - Procedure (procedure)
 - Qualifier value (qualifier value)
 - Record artifact (record artifact)
 - Situation with explicit context (situation)
 - SNOMED CT Model Component (metadata)
 - Social context (social concept)
 - Special concept (special concept)
 - Specimen (specimen)
 - Staging and scales (staging scale)
 - Substance (substance)



Why Extend into the Social Care Domain?

2020 - 2025 Strategic Priority

Evolve SNOMED CT to best serve improvements in patient outcomes and meet the needs **of integrated health and social care systems** in a sustainable fashion

Strategy development is a collaborative process



Social Care Survey

Survey of SNOMED International Member countries in order to understand

- The context and meaning of social care in these countries
- Current activities to expand/enhance SNOMED CT use in social care
- Current and future priorities for SNOMED CT use in social care

Responses from 18 countries were received





Social Care Working Definition

The provision of social work, personal care, protection or social support services to children or adults in need or at risk, or adults with needs arising from illness, disability, old age or poverty

As agreed by Members

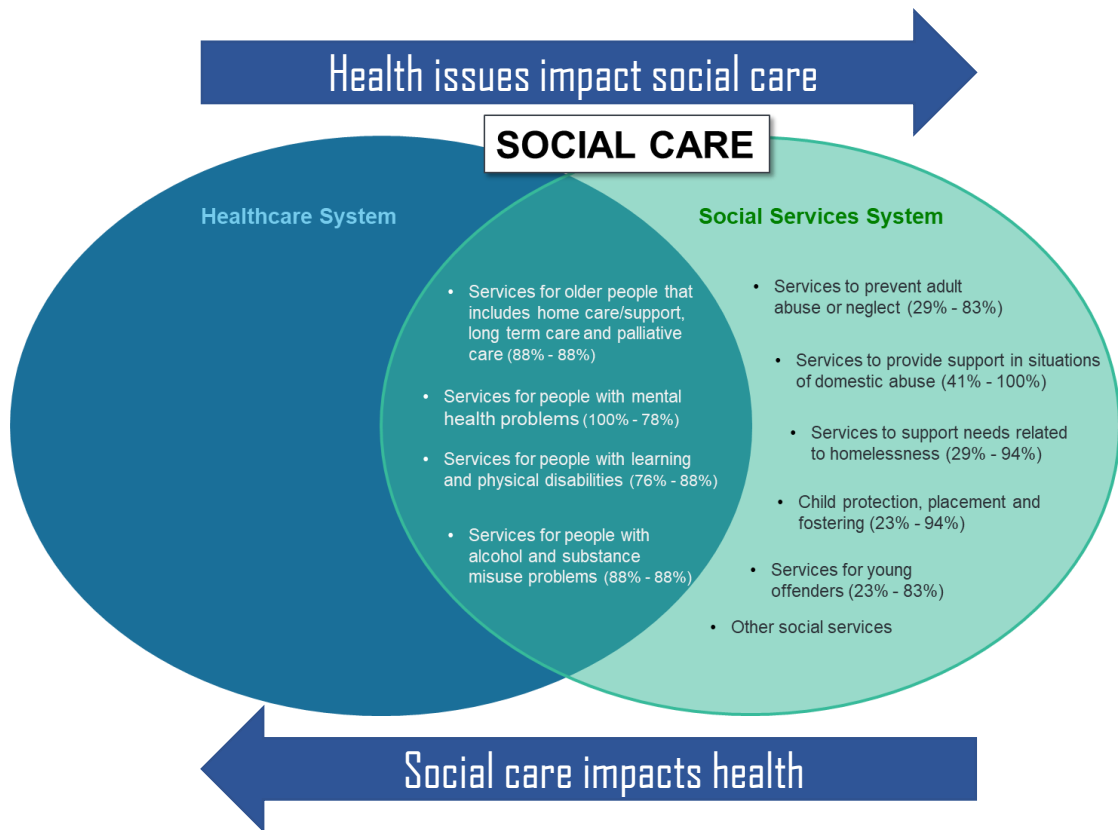


Survey Findings

The term **social care** commonly used in several countries

Social care services predominately provided within the **social services system**

SNOMED use currently limited however national projects will see that **increase**





Types of Services and Priority Areas

2022 - 2023

Older People

Services for older people that includes home care/support, long term care and palliative care.

Mental Health

Services for people with mental health problems.

Alcohol/Substance Misuse

Services for people with alcohol and substance misuse problems.

Disabilities

Services for people with learning and physical disabilities.

Adult Abuse and Neglect

Services to prevent adult abuse or neglect.

Domestic Abuse

Services to provide support in situations of domestic abuse.

Homelessness

Services to support needs related to homelessness.

Children

Child protection, placement, fostering and adoption services.

Young Offenders

Services for young offenders.



Social Care Pilot

- Interviews – experts across countries/projects on requirements
- Develop five use cases per domain
- Determine categories relevant for social care
- Identification of concepts with validation by SMEs
 - 500 per domain
- Identification of content gaps





Pilot Participants

- Countries
 - Australia, Denmark, Finland, Netherlands, Norway, UK, US
- Projects and subject matter experts
 - InterRAI project (AU)
 - Gravity project (US)
 - Oxford Public Health observatory (UK)
 - Kimberley Aboriginal Medical Services (AU)





Use Case Types for Each Domain

- Documentation of care
- Multidisciplinary care
- Monitoring of care over time
- Referral from one care situation to another
- Data aggregation





Older Person Domain Use Case Example

- Sharing data within a multidisciplinary (health/social) care team
- Goal – continuity of care
- Actor examples – client, social care worker, community health nurse

Scenario summary:

A 73-year-old widower with health issues that impact mobility

Lives in a third-floor apartment with stair only access

Rarely seen by neighbours and has issues with loneliness





Issues from Other Use Cases

- Substandard housing
- Financial insecurity
- Family violence
- Relationship difficulties
- Language barriers



In addition to the domain focus e.g., substance misuse



Categories

Categories were topic areas identified as relevant to social care.

Examples include

- Current situation such as living arrangement, financial status, support and social network, mental and emotional state
- Care – requirements, planning, delivery
- Goals and outcomes
- Procedures – assessment, screening, referral



Content Requirements

Pilot looked at content specific to the social care use cases

	Concepts Required	Concepts Available	Concept Gaps	Category Gaps
Older People	704	465	232	7
Mental Health	674	534	101	39
Alcohol & Substance Misuse	626	480	139	7

Last two domains – additional searches reduced concept gaps



Examples of Identified Concepts

- Unable to manage personal financial activities (finding)
- Has transportation to access health care (finding)
- Able to adapt after personal crisis (finding)
- Living in residence with poor sanitation (finding)
- Suspected victim of elder physical abuse (situation)
- Assessment of social interaction (procedure)
- Counseling about nutrition using social support strategy (regime/therapy)
- Family support (regime/therapy)





Pilot Results

- Demonstrated an overlap between health and social care domains
- Demonstrated importance of sharing information between domains
- SNOMED CT International Release already has significant content to support social care
- Extensions also have content – potential for promotion
- Categories – identified areas to explore further



Ongoing Content Work

- Review of use cases and categories
- Identification of subhierarchies with relevant content
- Identification of gaps in international content
- Review of extension concepts suitable to be moved to SNOMED CT International Release
- Meetings with project group SMEs to support filling of content gaps





Further Information

SNOMED
International

Cathy Richardson

SNOMED International
info@snomed.org