



[kieran.holland@](mailto:kieran.holland@healthpathwayscommunity.org)

healthpathwayscommunity.org

The Power of Community

Changing clinical practice globally with
HealthPathways

Kieran Holland

Clinical Lead – HealthPathways Strategy

Streamliners



Clinical Workgroups



- decision re urgent or not: eg angina palpitations
 HP - circles from ED → GP → spec
 HP Re - requests from other 2^o services inappropriate
 HP Re - registrar letters can be unclear
 HP - need to get trust of recommendations
 HP Re - quality of notes in GP.
 HP - confusion re private v public referrals after discharge
 HP Re - limited cardiac rehab & travel.
 HP - clear guidance needed on AMI management
 - ambulance guideline available
 - cost of ambulance means people won't use - no cost to patient.
 HP - inconsistent triage of referrals
 HP Re - send patients to ED due to delays in out-patients & "easier"
 HP Re - rapid access chest pain clinic
 HP - occasional late referrals - quality of referred letters
 HP - missed meds or discharge HP Re

- good GP access to investigations but
 HP Re - clarity needed around use
 HP - waiting times not available. HP practice has changed.
 HP - pericarditis
 HP Re - referral acknowledged but no time given
 HP Re - phone for written advice - not about for this & some done
 HP - hard to expedite referral - time
 HP - lack of clear fu guidance & could do more fu.
 HP - communication from X to GP.
 HP Re - instructions don't get done in GP.
 HP - on med. sub-spec cardiology may cause issues
 HP Re - more clear direction of interests
 HP - feeling can be inappropriate & fu delays
 HP & ed Re

- requests from other 2^o services inappropriate
 HP Re - registrar letters can be unclear
 HP - need to get trust of recommendations
 HP Re - quality of notes in GP.
 HP - confusion re private v public referrals after discharge
 HP Re - limited cardiac rehab & travel.
 HP - clear guidance needed on AMI management
 - ambulance guideline available
 - cost of ambulance means people won't use - no cost to patient.
 HP - inconsistent triage of referrals
 HP Re - send patients to ED due to delays in out-patients & "easier"
 HP Re - rapid access chest pain clinic
 HP - occasional late referrals - quality of referred letters
 HP - missed meds or discharge HP Re



Waitaha | Canterbury

- Home
- COVID-19 ▼
- About HealthPathways ▼
- Canterbury Unlocalised Pathways
- Acute Care ▼
- Allied Health and Nursing ▼
- Child and Youth Health ▼
- Clinical Procedures ▼
- Investigations ▼
- Legal and Ethical ▼
- Medical ▼
- Mental Health and Addiction ▼
- Older Adults' Health ▼
- Preventive Care and Public Health ▼
- Reproductive Health ▼
- Specific Populations ▼
- Surgical ▼



Waitaha | Canterbury COMMUNITY HEALTHPATHWAYS

Health Alert






See [COVID-19 Recent Changes](#) for the latest important changes.

Latest News

10 November
Hepatitis A risk from frozen berries
 There are ongoing cases of hepatitis A linked to frozen berries. On suspicion, arrange urgent

Pathway Updates

- NEW – 24 November*
[Eating Problems in Children and Youth](#)
- Updated – 22 November*
[Acute Plan](#)
- Updated – 22 November*
[Non-acute Respiratory Assessment](#)
- Updated – 15 November*

-  USING HEALTHPATHWAYS
-  HOSPITAL HEALTHPATHWAYS
-  HEALTHINFO
-  ALLIED HEALTHWAYS
-  [SEND FEEDBACK](#)

Survey of general practitioners

(Canterbury 2014, N=249)

HealthPathways	Agree (%)
Makes my job easier	90
Improves care in the community	90
Improves my relationships with specialists	57



Hunter New England

Search Community HealthPathways

Community HealthPathways

Hunter New England

- Home
- COVID-19
- About HealthPathways
- Aboriginal and Torres Strait Islander Health
- Acute Services
- Allied Health Referrals
- Child Health
- Care in the Last 12 Months of Life
- Investigations
- Lifestyle & Preventive Care
- Medical
- Mental Health
- Older Persons' Health
- Therapeutics
- Public Health
- Specific Populations
- Surgical
- Women's Health
- Our Health System

Hunter New England COMMUNITY HEALTHPATHWAYS

Health Alert

NSW Health alerts:

- [Monkeypox](#) – see also [NSW Health clinical alert update, webinar](#), [fact sheet](#), and [Department of Health Advice](#)
- [Acute hepatitis of unknown aetiology in children](#)
- [Japanese encephalitis – information for health professionals](#) and [dashboard](#)

Hospitals and health facilities across NSW are now on amber alert. See [COVID-19 pathways](#):

- [COVID-19 vaccination](#)
- [Care of COVID-19 Positive Adult/Paediatric Patients](#)

Pathway Updates

Updated – 14 June
[Low Vision Services](#)

Updated – 14 June
[Hydrotherapy Referrals](#)

Updated – 14 June
[After Hours General Practice Services](#)

NEW – 14 June
[Practice Incentives Program – Indigenous Health Incentive \(PIP-ILI\)](#)

Updated – 14 June
[Drug and Alcohol Community Support](#)

E-REFERRAL

- PATIENT INFO
- PROVIDER DIRECTORIES
- DOCTORS HEALTH ADVISORY SERVICE
- RACGP
- THERAPEUTICS

Hunter New England

Search Hospital HealthPathways

Hospital HealthPathways

Hunter New England

- Home
- About HealthPathways
- Acute Care
- Allied Health
- Child and Youth Health
- Clinical Procedures
- Discharge and Community Support
- Investigations
- Legal and Ethical
- Medical
- Mental Health
- Nutrition
- Older Persons' Health
- Perioperative Care
- Pharmacology
- Preventive Care

Hunter New England HOSPITAL HEALTHPATHWAYS

Health Alert

- [HNELHD COVID-19 Information](#)
- [NSW Health COVID-19 Information](#)

Pathway Updates

Updated – 12 April
[Falls Risk Screening - Adult - District](#)

NEW – 6 April
[Blood Gas Interpretation - Adult - District](#)

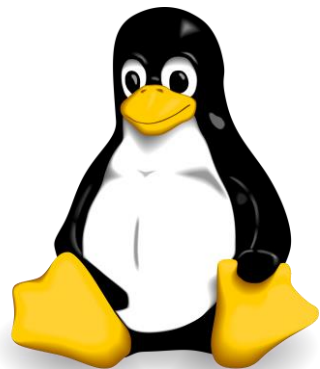
Updated – 5 April
[Delirium - Adult - District](#)

CAP

- MEDCHART
- STAFF CONTACTS
- COMMUNITY HEALTHPATHWAYS



network effect — when the value of a good, service, or platform changes as more people use it.



WIKIPEDIA
The Free Encyclopedia



Pathways influence care of over 35 million people



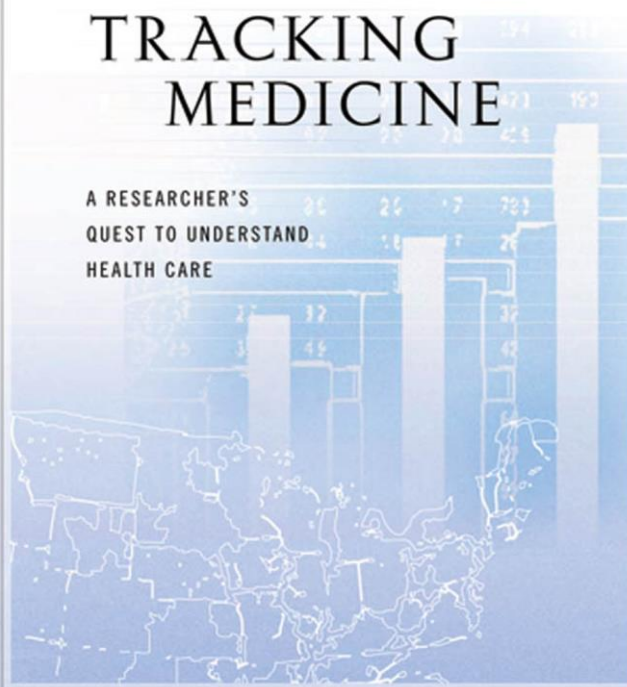
Contributors

General practitioners	9000+
Nurses	8000+
Specialists	7000+
Allied health	5000+

JOHN E. WENBERG

TRACKING MEDICINE

A RESEARCHER'S
QUEST TO UNDERSTAND
HEALTH CARE



PATHWAY
VARIATION

=

WARRANTED
VARIATION

+

UNWARRANTED
VARIATION



Government health departments

Set health policy & goals



Contributing organisations

Provide latest evidence & recommended practice



Front-line clinicians



Patients



Front-line clinicians



Patients



Front-line clinicians



Patients

National Criteria for Access to Community Radiology

2015



Government health departments

Set health policy & goals



Contributing organisations

Provide latest evidence & recommended practice



Front-line clinicians



Patients



Front-line clinicians



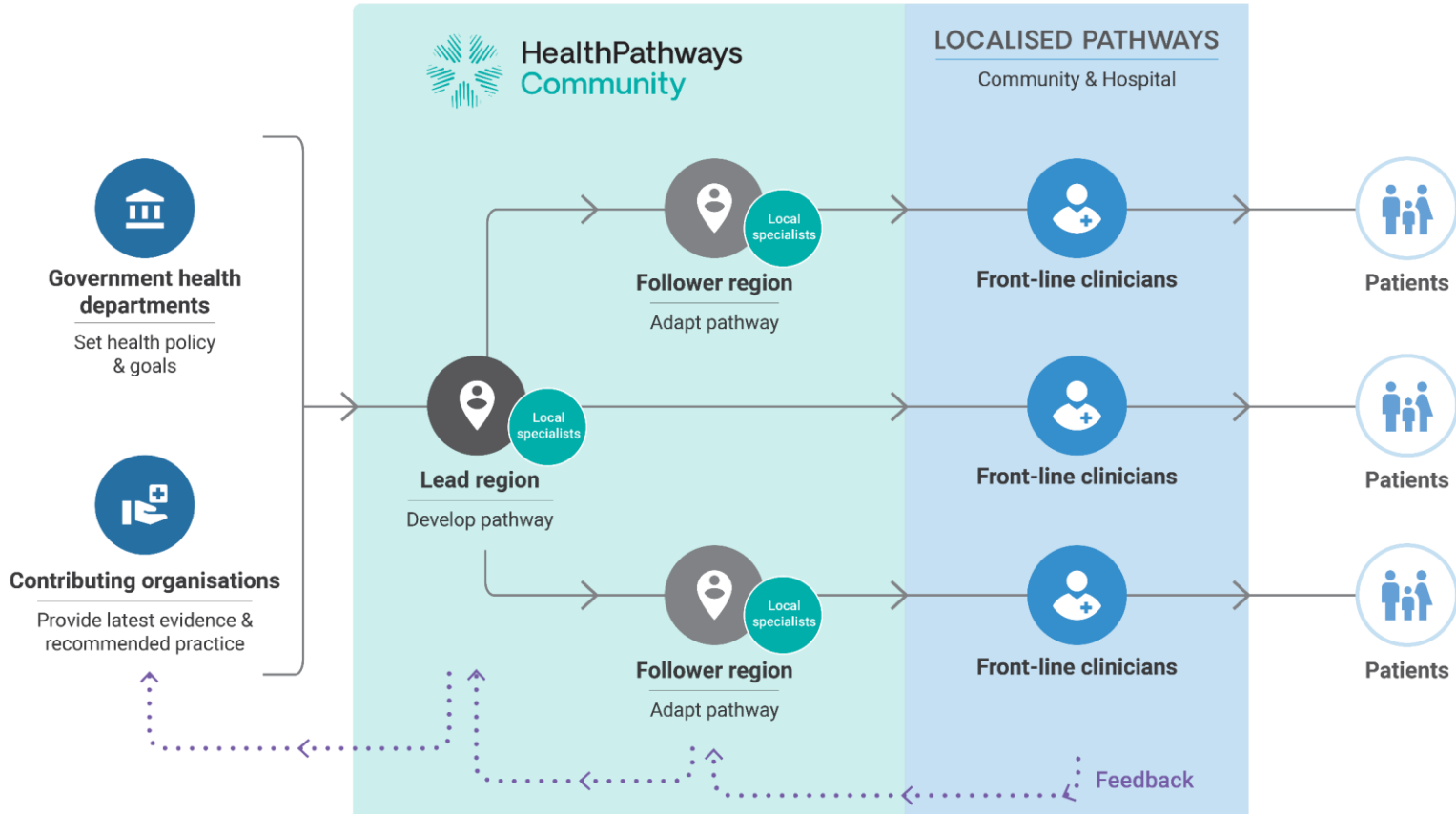
Patients



Front-line clinicians



Patients



Te Whatu Ora

Health New Zealand

Te Aka Whai Ora

Māori Health Authority



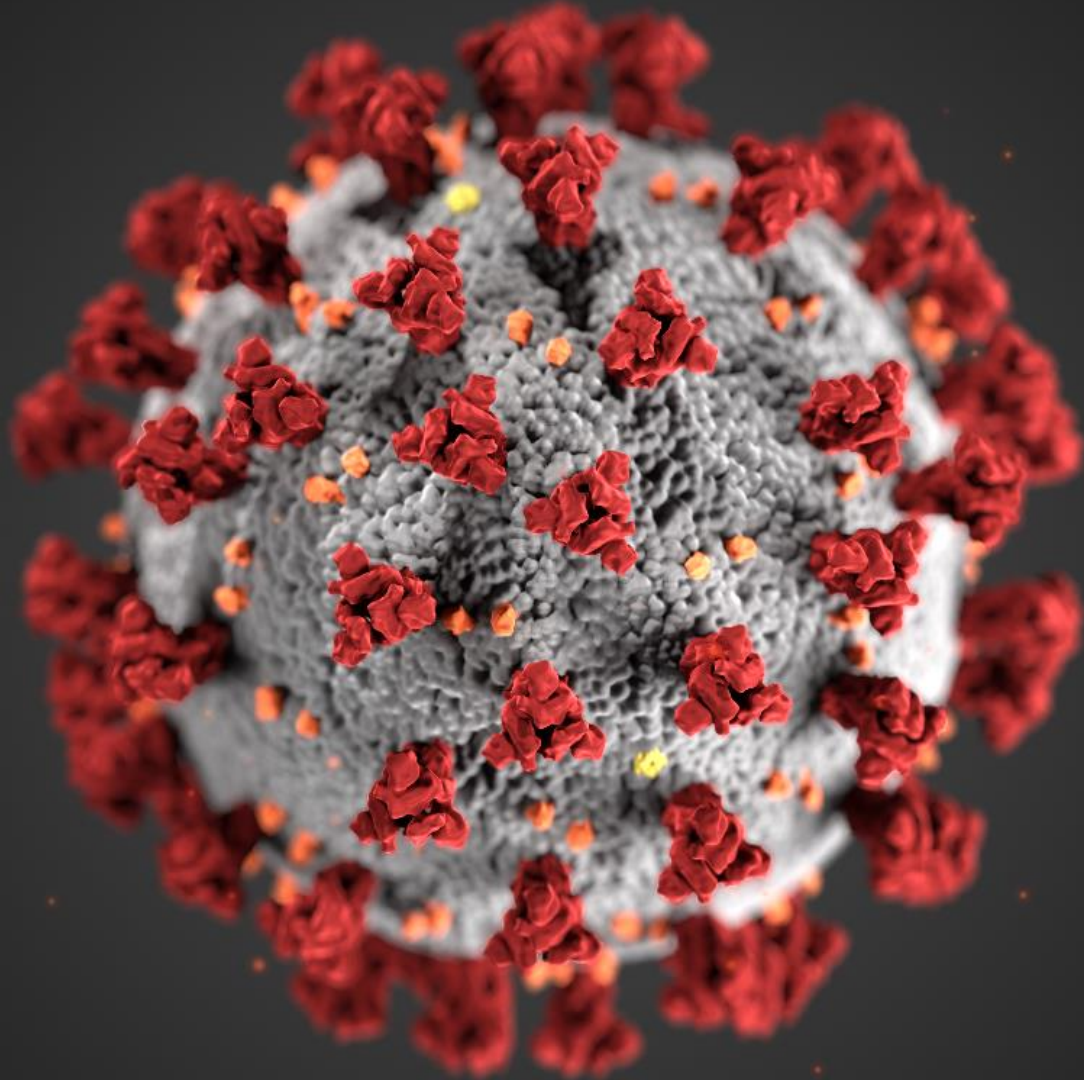
Queensland
Government



Health



GIG
CYMRU
NHS
WALES





Robyn Barnes GP health and Sport Central



Antoinette Ehmke



Anna Ladines



Paola Castaneda



Amanda



Kieran Holland



Janine



Dianne Davis



helen liley



Jenny Maybin



Caroline Ansley



Anna

Education

HealthPathways COVID-19
Primary Care Education Session



HealthPathways
Community

Ministry of Health May COVID-19 response update for primary care

WEDNESDAY 25 MAY, 7:00 PM - 8:15 PM

Presenters include:



**DR SAMANTHA
MURTON**

*President, Royal New
Zealand College of General
Practitioners (chair)*



**DR MARION
POORE**

*Public Health Physician,
Ministry of Health*



**DR JOE
BOURNE**

*GP, Health System
Preparedness Programme
Clinical Advisor*



**DR JUSTINE
LANCASTER**

*GP COVID-19 Care in the
Community Clinical Lead*



**DR MARION
LEIGHTON**

*National Immunisation
Programme Principal
Clinical Advisor*



api.healthpathwayscommunity.org



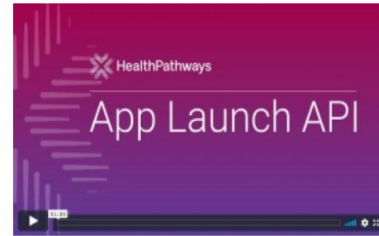
API Documentation

Pathway Link API



Lets clinicians access HealthPathways from other clinical applications

App Launch API



Lets clinicians launch other clinical applications from HealthPathways



Kieran Holland – Clinical Lead, HealthPathways Strategy

kieran.holland@healthpathwayscommunity.org



**HealthPathways
Community**