

CITY LOGISTICS

THE LAST BUT NOT LEAST MILE



BETTER TRANSPORT • BETTER PLACES • BETTER CHOICES



Auckland

Thursday, 30 September 2021

'Slap in the face' for George St retailers

By Riley Kennedy and Grant Miller

9679 388

News > Dunedin

25 Comments

Retailers have vented their anger about the Dunedin City Council's decision to make the city's main shopping street one-way for traffic and tilted towards pedestrian use.

One called the vote for a one-way George St a "slap in the face" for retailers.

Another took aim at Dunedin Mayor Aaron Hawkins by mocking up a picture of him on a dart board.

However, the Otago Chamber of Commerce spoke up in support of a revamp of the George St area.

Parisian promenades or free parking? The battle over Auckland's 'shared spaces'

Isaki Neill

August 18, 2022, - 05:00am

247 Comments Share

OPINION: Auckland spent tens of millions of dollars turning city centre streets into Parisian-style "shared spaces" intended for people to cycle, stroll and relax away from traffic.

And then people parked their cars in them.

Online posts with photos of cars parked up on the fancy paving have become a staple of Auckland-centric social media accounts, appealing to the city's transport agency to tow the offenders, now.

Home / New Zealand

Auckland Transport backtracks on K Rd bus lanes. Operating hours will be cut back

By Raphael Franks

28 May, 2024 05:00 AM 4 mins to read

Auckland Transport is backtracking on bus lanes along a key transit route down Karangahape Rd, cutting the hours the lanes will operate as bus-only.

It is a reversal of changes made when the lanes' operating hours were extended to include mornings and weekends last November.

It also follows opposition to November's changes from businesses and motorists, with reports Auckland Transport (AT) was dishing out more than \$100,000 a week in fines to those caught using the lane.

But the backdown came despite AT saying the lanes had helped make buses faster, that they had been effective and "there is a need for them on weekends".

And while one business leader has hailed the reversal as "a good compromise", a public transport advocate said AT had "taken fright very easily because of a specific pressure group".

The decision on the bus lane changes was outlined in a business report due to go before AT's board of directors today. The

Almost 300 businesses voice opposition to removing vehicles and car parks from capital's Golden Mile

Damian George

September 18, 2020, - 05:00am

Share

The Wellington Chamber of Commerce has joined the voices opposing the capital's [Golden Mile plans](#), with almost 300 of its members against the changes.

The Chamber surveyed 330 businesses in and around the Golden Mile as part of its submission against the plans, with 90 per cent opposing all three proposed options.

"None of the options have contemplated impacts on access and traffic flow," the submission said.

"Removing loading zone availability will debilitate businesses' operations. Nearby car parks are critical for patronage.

Abuse of mobility car parks continues

WAI TIKIWAH - Waikato Times

March 11, 2008, - 07:07pm

Share

Efforts to stop able-bodied people pinching car parks reserved for the disabled seem to be falling on deaf ears.

The fine for illegally parking in a space reserved for disability permit holders was increased nearly four fold during the middle of last year from \$40 to \$150.

However, in Masterton the move has had little impact with parking wardens continuing to issue a similar number of parking infringement notices.

There are 10 designated mobility car parks in Masterton and around the same number again on private premises such as supermarkets and the hospital.

What is city logistics?

IN URBAN AREAS

**Delivery and
pickup of goods**

**Trades and
servicing**

**People
pick-up and
drop-off**

Barcelona



Bordeaux

Paris

Brussels

"But we're not a big city with all those big city problems"

What can be done?



Avoid

Shift

Improve

Avoid

- Crowd shipping
- Full delivery loads
- Public transport vehicles
- On-street waste collection



London



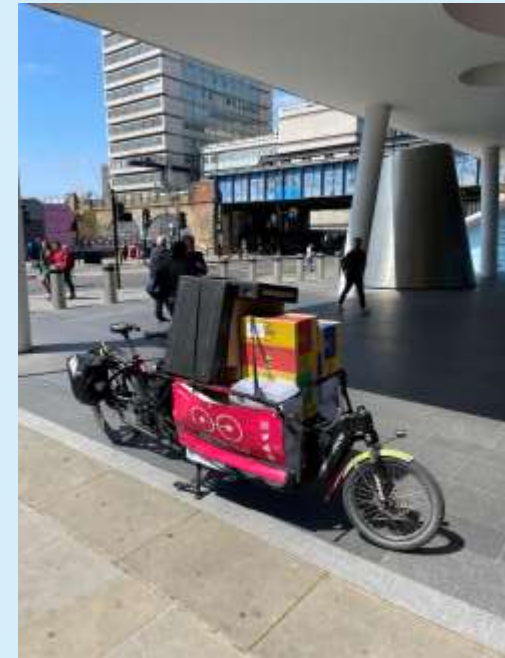
Barcelona

Shift

- E-cargo cycles
- Light electric vehicles
- Public transport
- Night-time deliveries
- Parcel lockers
- Bookable loading zones



London



London



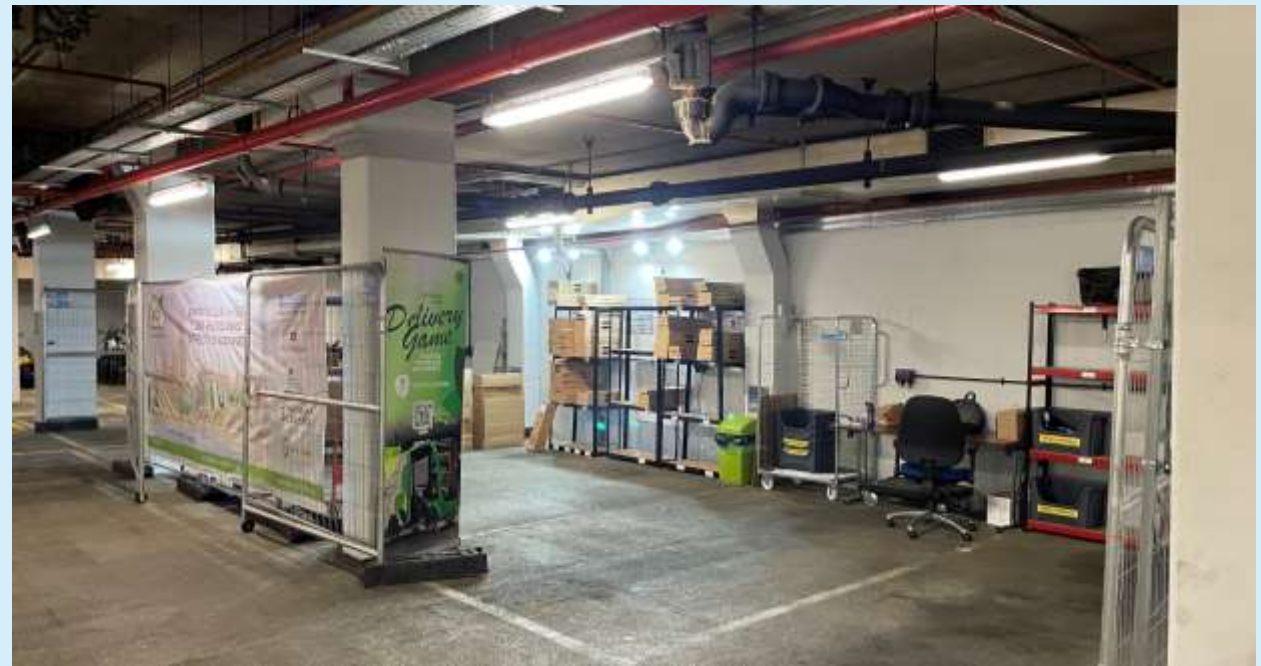
Sydney



Paris

Improve

- Electric
- Hybrid
- Technology
- Share loading docks



London



London



London

How do we make it happen?

S

Subsidise

E

Enforce

C

Communicate

R

Regulate

E

Enforce

T

Trial

S

Subsidise

E

Enforce

C

Communicate

R

Regulate

E

Enforce

T

Trial

Subsidies

- E-bikes
 - Brussels – up to €4000
 - UK – up to 40% of the cost
- Night-time deliveries
 - Focus on receivers



Paris



Barcelona

S

Subsidise

E

Enforce

C

Communicate

R

Regulate

E

Enforce

T

Trial

Ticketed loading zones

- “vehicle that has been built to carry goods”
- \$187 AUD fine for violating
- 30 min period for loading TOTAL



Sydney



Sydney

S

Subsidise

E

Enforce

C

Communicate

R

Regulate

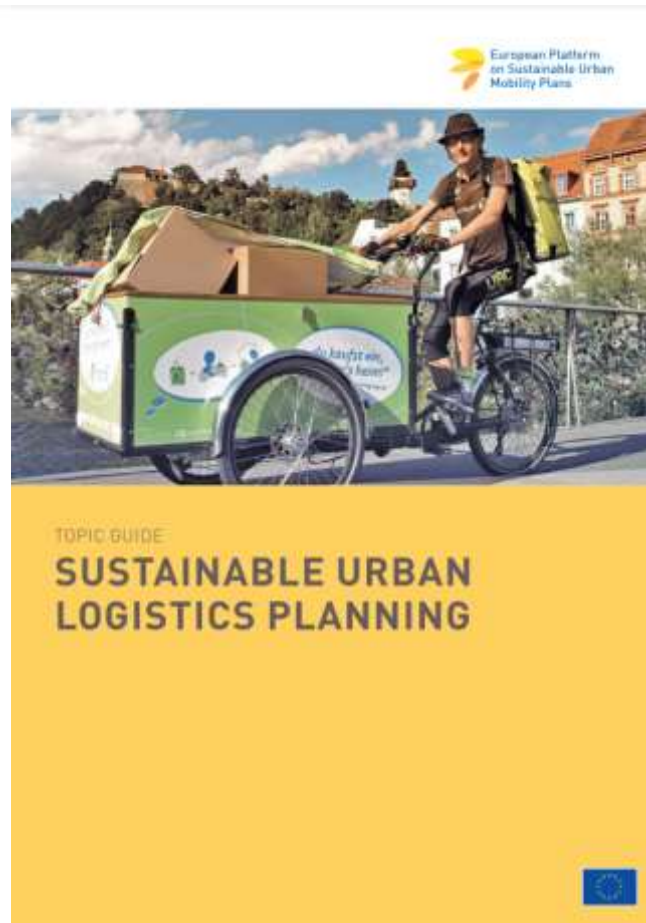
E

Enforce

T

Trial

Last Mile/City Logistics Plans



Amsterdam

S

Subsidise

E

Enforce

C

Communicate

R

Regulate

E

Enforce

T

Trial



Barcelona



Amsterdam



London

S

Subsidise

E

Enforce

C

Communicate

R

Regulate

E

~~Enforce~~

BOLLARDS!

T

Trial



London



London



London

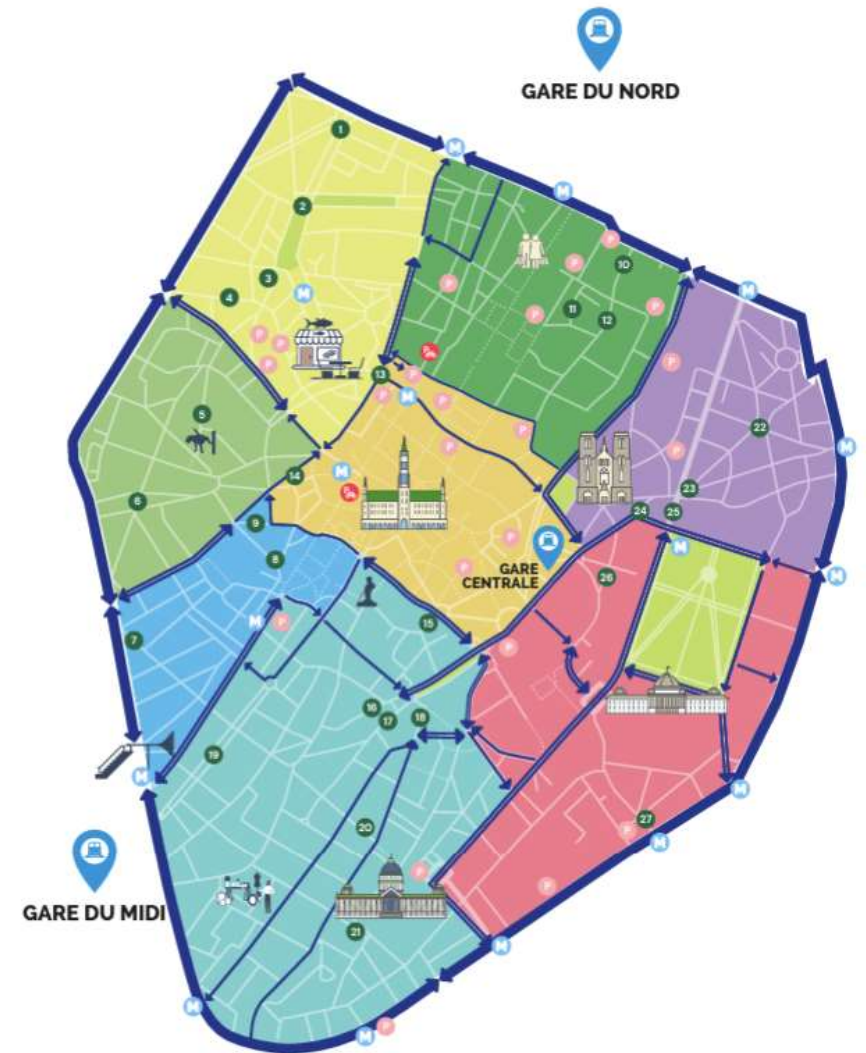


Paris

Brussels

Brussels traffic circulation

- New traffic circulation plan introduced in August 2022
- One year on, 25% less car traffic and 36% more cycles
- Lots of retractable bollards and ANPR cameras
- Good Move traffic circulation
- Deliveries between 4-11am
- Access allowed for permitted activities with a pass



S

Subsidise

E

Enforce

C

Communicate

R

Regulate

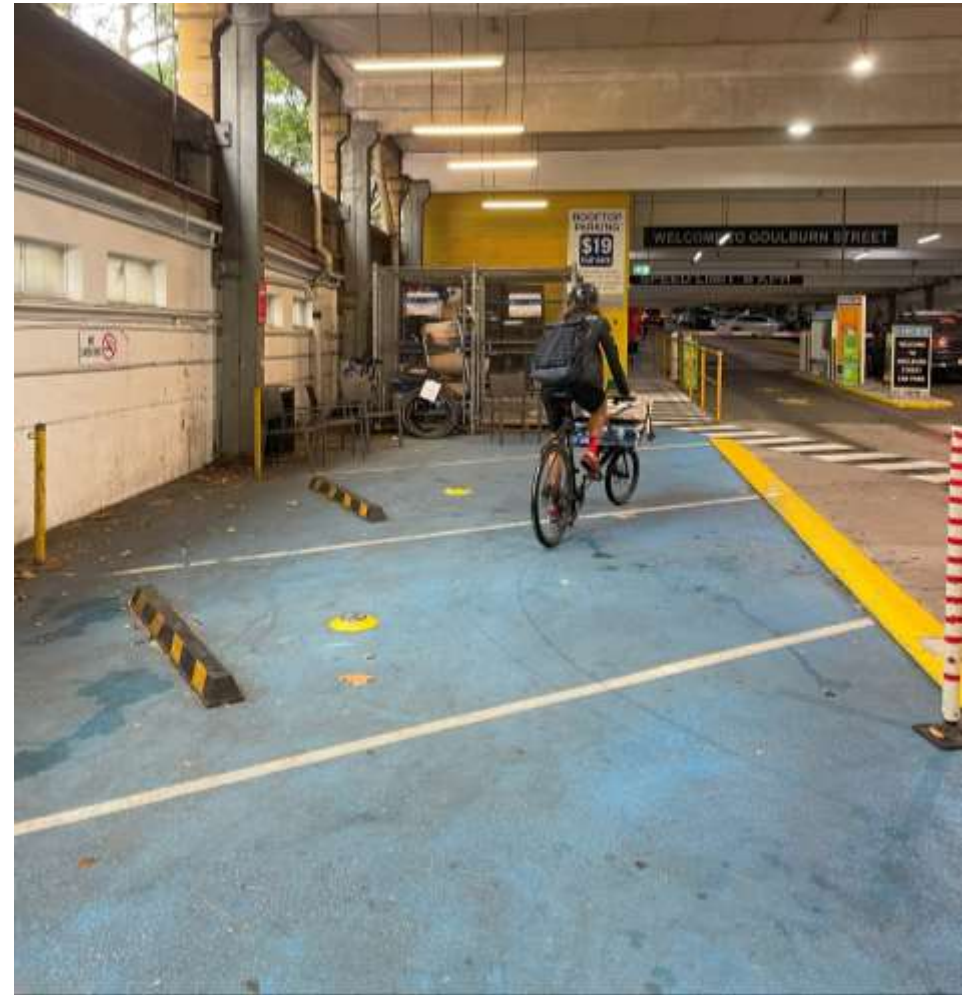
E

Enforce

T

Trial

Sydney consolidation centre





Sell the vision

Nowhere is perfect



Barcelona



BETTER TRANSPORT • BETTER PLACES • BETTER CHOICES