

The Never-Ending Story:
consenting an urban
cycleway

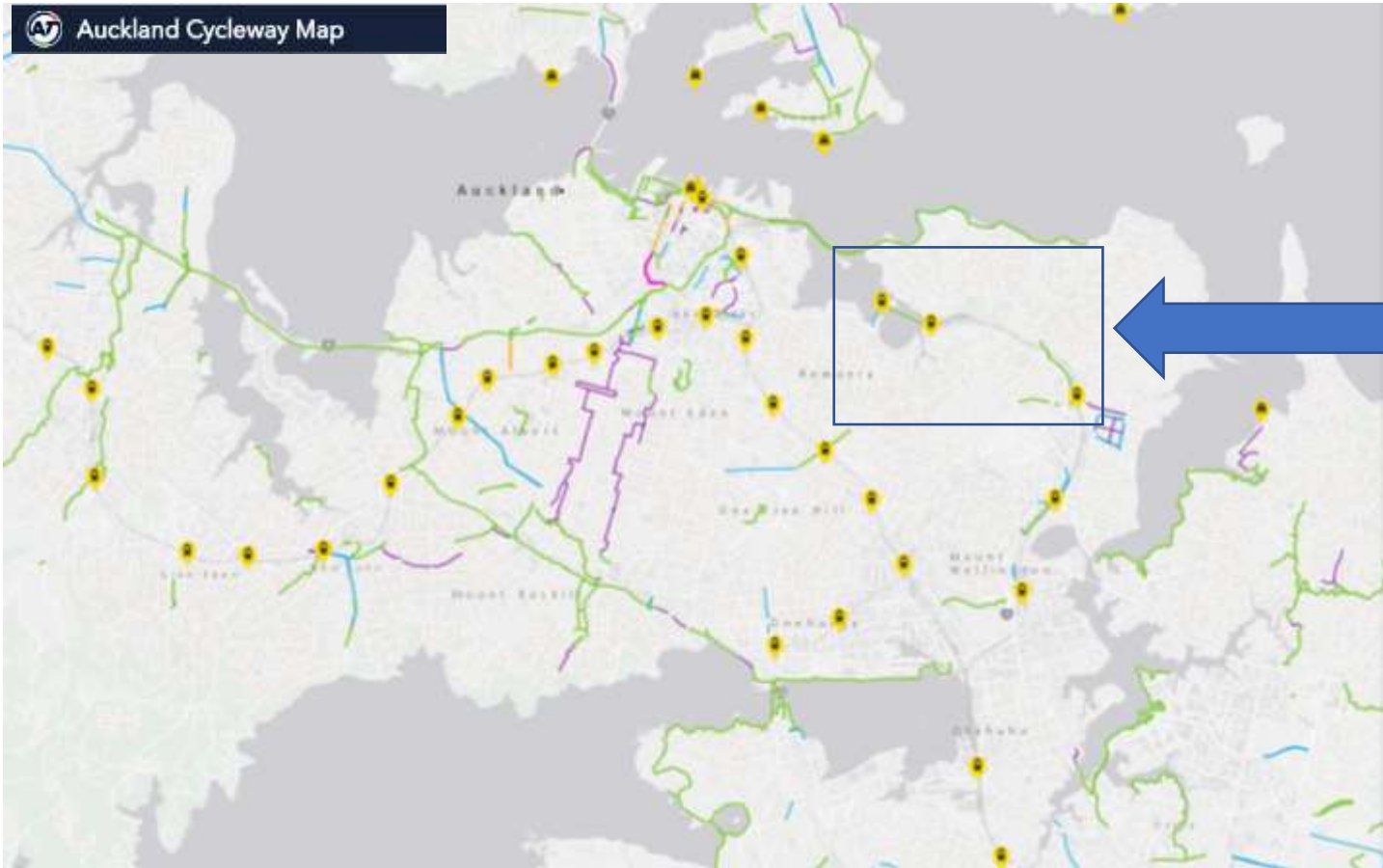
Safety Moment



Cycle metro level of service attractive to all levels and users:

- Many design guides
- Multiple users
- Many different requirements





Te Ara Ki Uta Ki Tai

Filling the gap in the network

Te Ara Ki Uta Ki Tai (the path of land and sea)





Limited access

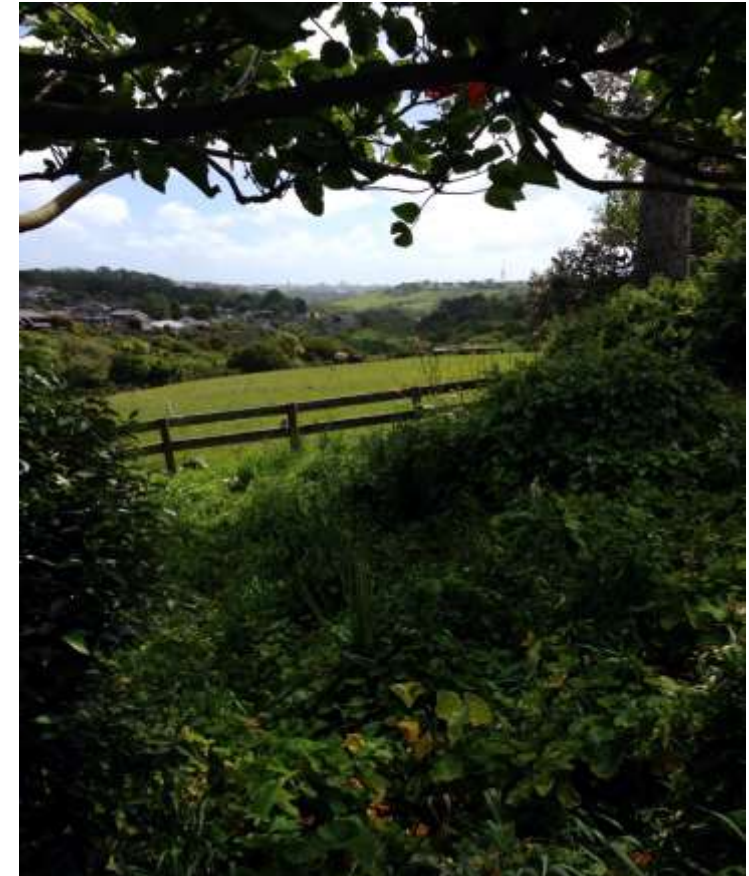


used by others



Obstacles to overcome

Highly valued areas





Identified and protected values

Effects on Neighborhoods





Construction effects

Cultural protocols





Community support

News making

AUCKLANDER

Plans to expand Auckland cycle network

25 May, 2016 7:26am

2 minutes to read



The public are being asked where they would like cycle routes in Meadowbank, Orakei, Remuera, Newmarket, Grafton and Parnell. Photo/Natalie Slade

NEW ZEALAND

Metal railing for cyclists as part of widening of Auckland's Orakei Basin boardwalk labelled an environmental eyesore

10 Jun, 2016 11:46am

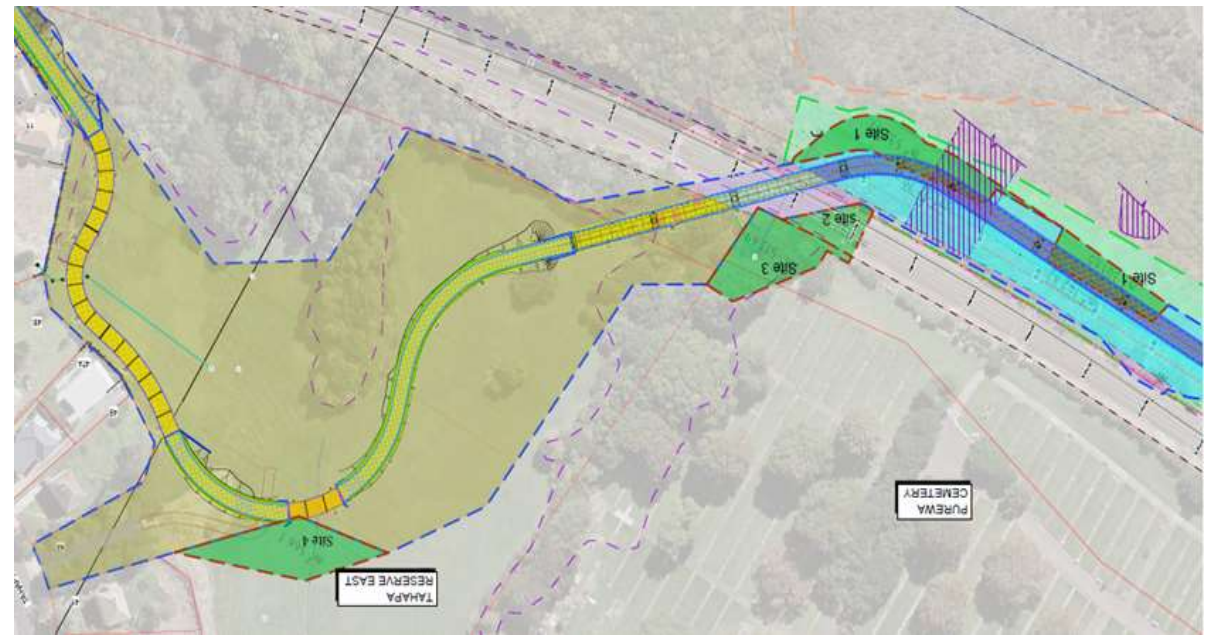
3 minutes to read





Political interest

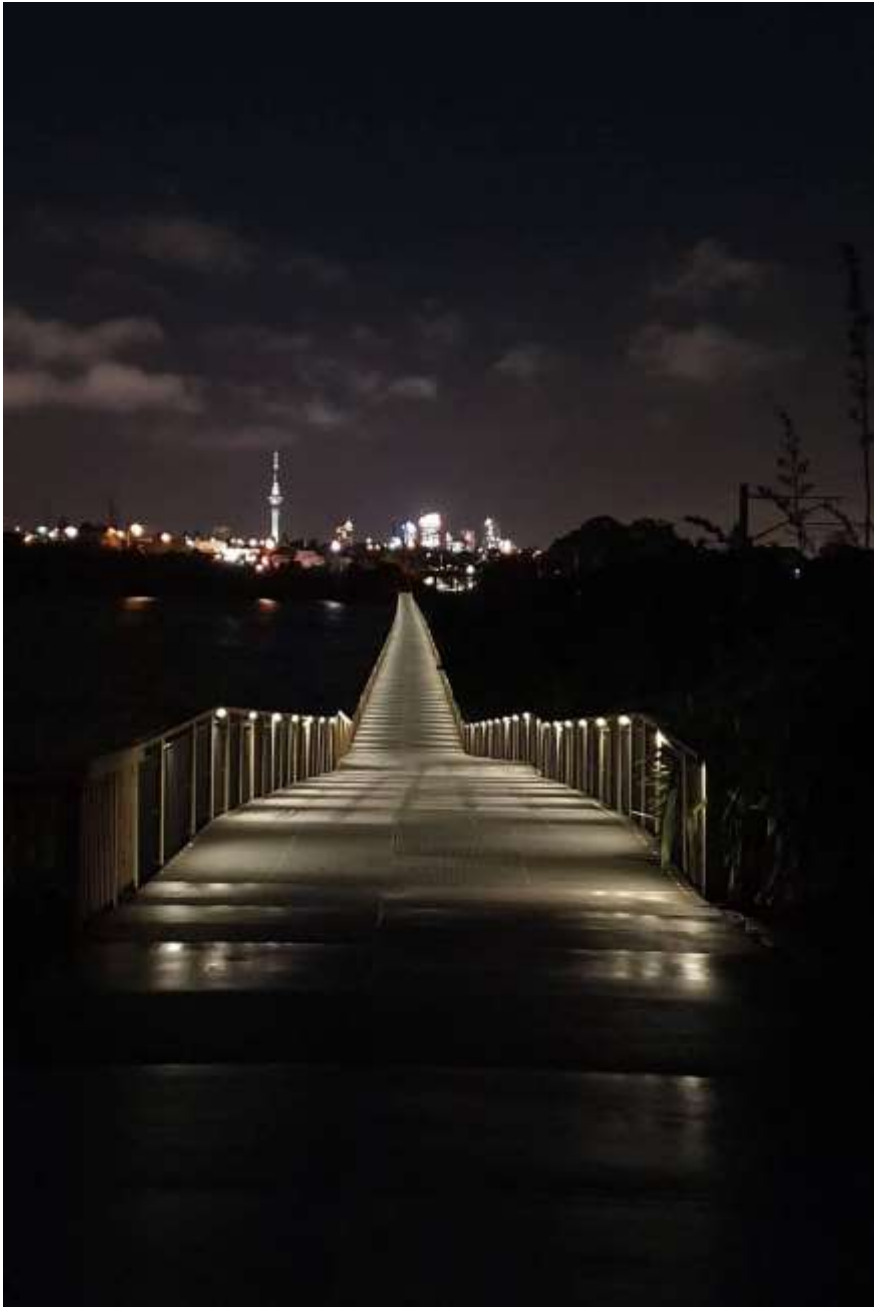
Detail design - changes to alignment





Existing urban areas

no easy routes left



“Great path”

Acknowledgments

- Images used are from Stantec project files and reports
- Bike Auckland, Waka Kotahi NZ Transport Agency and Auckland Transport web sites