

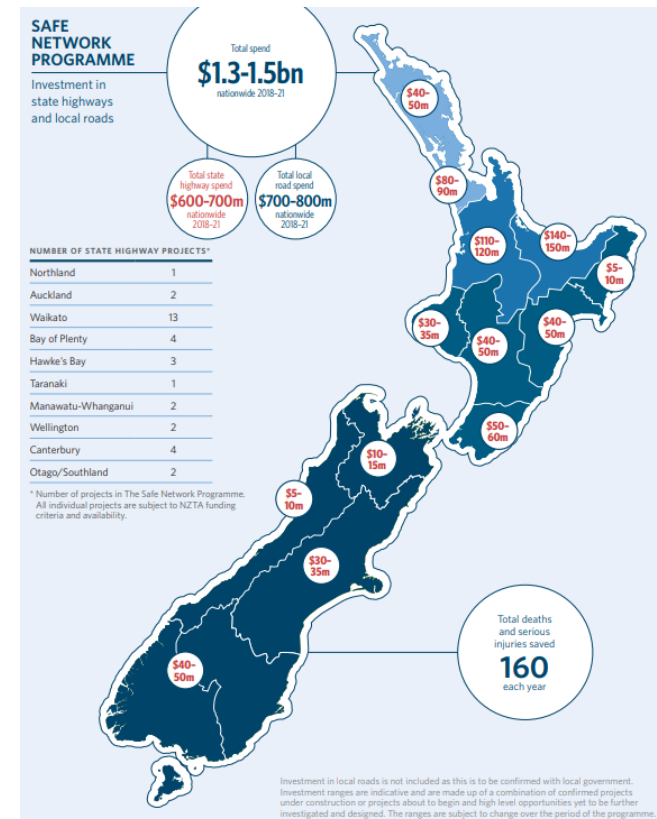


Safe Network Programme Delivering safer roads together

Kaye Clark, Principal Advisor

Safe Network Programme

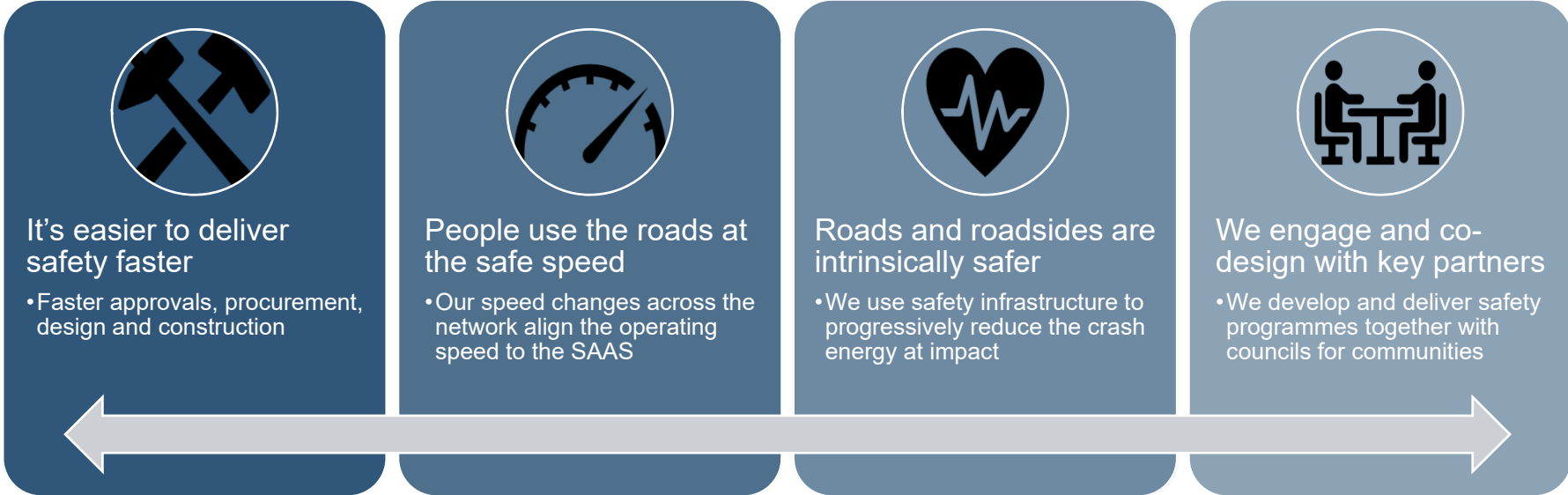
- Make the country's highest risk roads safer
- State highways and local roads
- Three-year programme \$1.3-1.5 billion
- Three components:
 1. Safe roads and roadsides
 2. Safe and appropriate speeds
 3. Safe level crossings
- Announced December 2018 at Dome Valley



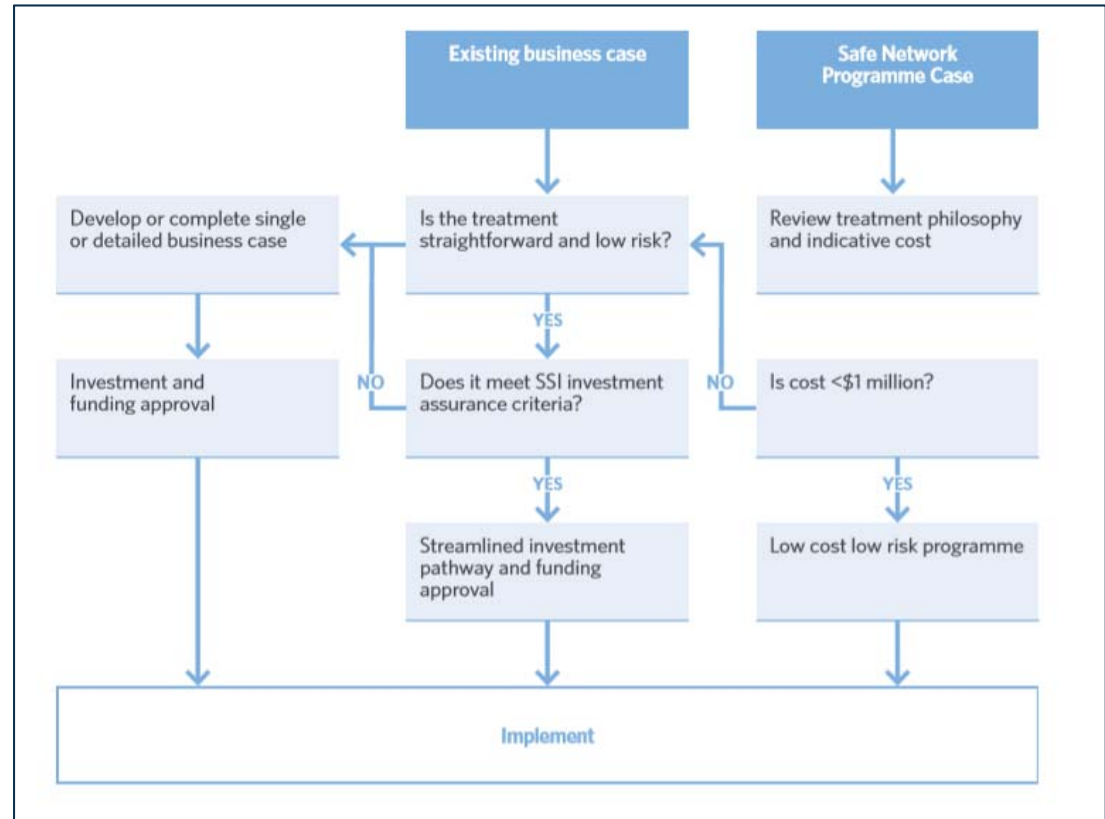
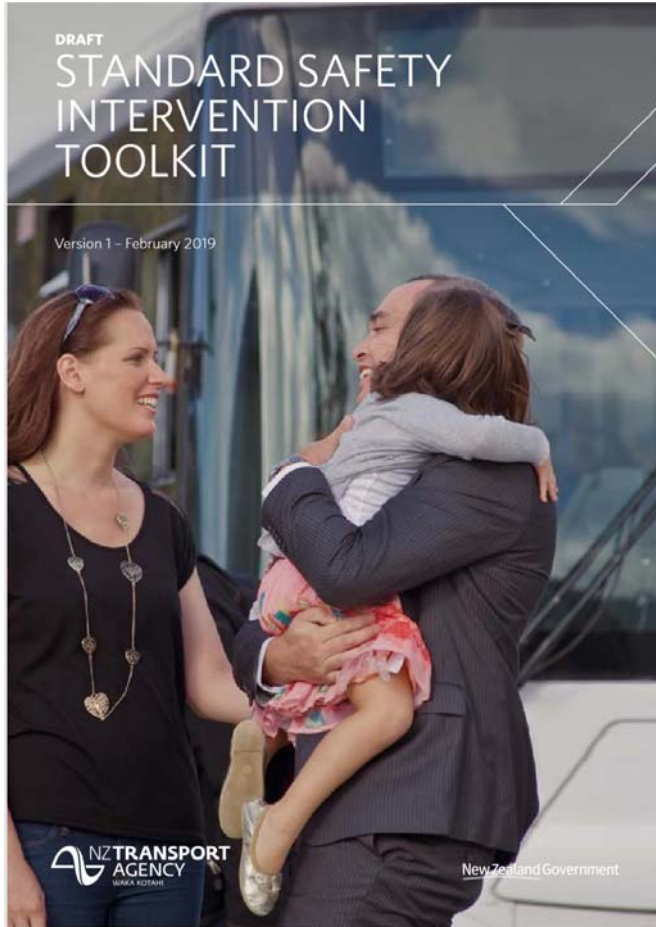
Safe Network – Sub programmes

| <i>Deliver Safer Roads Together</i> | | | | |
|-------------------------------------|---------------------|-----------------|----------------|--------------------|
| Sub programme | Roads and Roadsides | | Speed | Level Crossings |
| Spend | Highway \$678m | Local \$751m | Top 10% 31m | 34 Projects 26m |
| Deaths and Serious Injuries / annum | 59 | 113 | 150 | 10 |

Safe Network - Objectives



Outcome - A significant reduction in deaths and serious injuries



www.nzta.govt.nz/snp

Simple things can save lives
Widening the road centreline means more space between you and oncoming vehicles. This can reduce serious crashes by up to 20 percent.*

Widening the centrelines

Rumble strips
Your wake-up call
These raised markings make a rumbling sound when you drive over them. This gives you a wake-up call if you stray across the line. Rumble strips can reduce fatal run-off-road crashes by up to 42 percent.*

Flexible barriers
Your safety net
Flexible road safety barriers catch you before you hit something harder. If you hit a flexible barrier, the steel cables flex, slowing down your vehicle and keeping it upright. They absorb the impact so you and the people with you, don't.

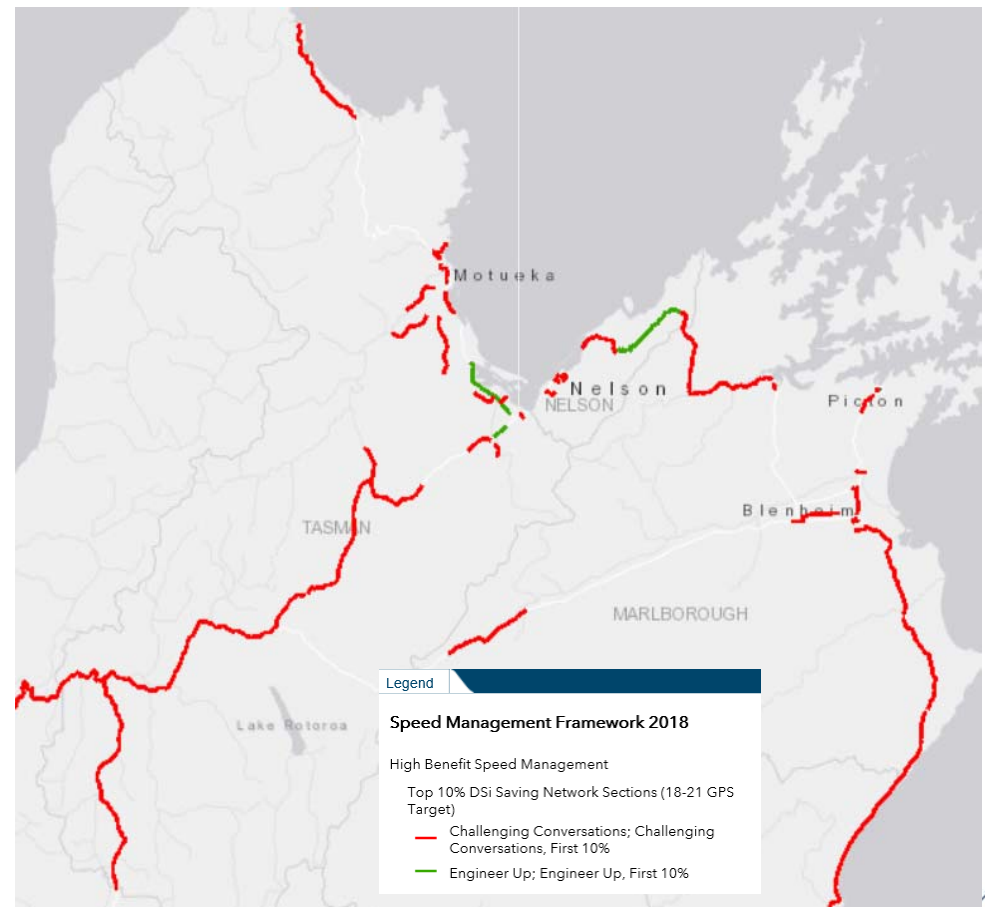
Motorcycle underlay rails
Making it safer for motorcyclists
Motorcycle underlay rails redirect the rider along the barrier and away from the guardrail posts if they fall off their bike, reducing the chance of motorcyclists being seriously injured or killed if they crash.

Side and median barriers
Providing protection
Barriers catch you before you hit something harder like a tree, power pole or oncoming vehicle. When fitted along the side and centre of the road, they can reduce the number of people killed by up to 90 percent.**

Widening the road shoulder
Room to recover
A wide sealed road shoulder gives you room to recover if you lose control or need to move out of someone's way. This can reduce serious crashes by up to 35 percent.*

* High-Risk Rural Roads Guide, published September 2011, NZ Transport Agency. First Edition.
** Johansson, R. (2009). Vision Zero – Implementing a policy for traffic safety.

Speed Management – delivered in partnership with local government.



Safe Network – Leadership Team



Dave Van Staden

Portfolio Manager



Tim Crow

Highway Lead



Kaye Clark

Local Authorities Lead



Mike Seabourne

Pipeline and PMO



Jessica Rattray

Safety Engineering Lead



Clare Fraser

Comms and Engagement

SNP Lead
Accountable for
SNP strategy
and
governance

Accountable
for delivery of
all highway
activities

Responsible
for partnered
delivery of all
local activities

Accountable
for new
projects and
SNP PMO

Accountable
for safety
engineering
related to SNP

Responsible for
communication
& engagement
for SNP

Safe Network – Area programme managers



Michael Brown –
Auckland



Junine Stewart -
Waikato



Jeanine Foster -
South Island



**New Road
Safety
Strategy
2020 to
2030**

Road to Zero

Draft National Road Safety Strategy
(2020-30) led by Ministry of Transport



Consultation closed
14 August 2019



NEW ROAD SAFETY STRATEGY FRAMEWORK

Our vision is a New Zealand where no one is killed or seriously injured in any road crash

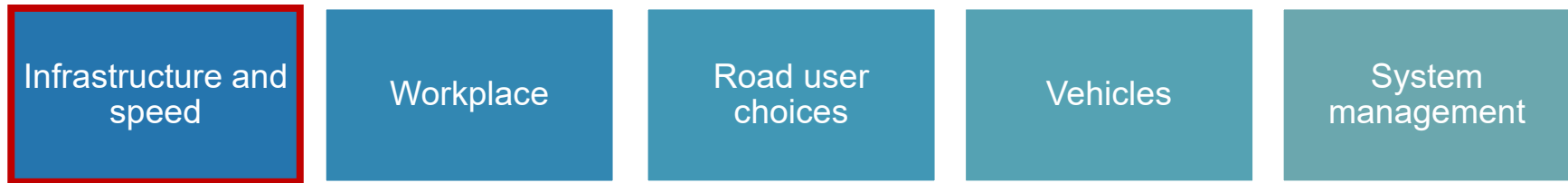
The vision is underpinned by seven guiding principles



2030 target

A 40% reduction in deaths and serious injuries (on 2018 levels)

Focus areas



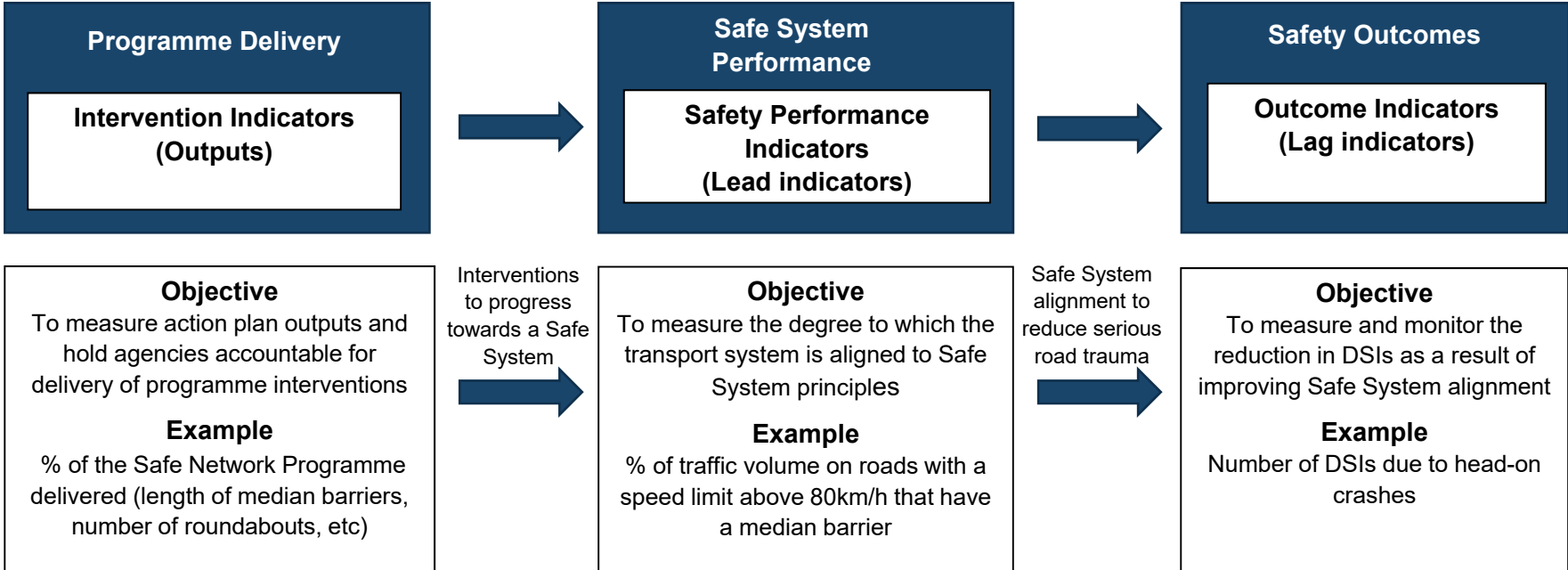
The **FOCUS AREAS** are where we will direct our effort in the new strategy

The strategy will be supported by a first **ACTION PLAN** with the following immediate priority actions identified under each focus area

| Infrastructure and speed | Workplace | Road user choices | Vehicles | System management |
|---|--|--|--|---|
| <ul style="list-style-type: none">✓ Increase investment in safety treatments and infrastructure improvements✓ Review infrastructure standards and guidelines✓ A new approach to tackling unsafe speeds | <ul style="list-style-type: none">✓ Support best practice for work-related travel✓ Strengthen the regulation of commercial transport services | <ul style="list-style-type: none">✓ Strengthen road policing✓ Enhance drug driver testing✓ Increase support motorcycle safety✓ Review financial penalties and remedies✓ Accessible streets package | <ul style="list-style-type: none">✓ Raise safety standards for vehicles entering the fleet✓ Mandate ABS for motorcycles | <ul style="list-style-type: none">✓ Strengthen system leadership, support and co-ordination |

Road to Zero 2030 Outcomes Framework

Outline of draft framework being developed in partnership with MOT - for discussion





National Speed Limit Register (NSLR)



NSLR –

A centralised, trusted source of the truth for all fixed speed limits for roads in New Zealand

Strategic Context:

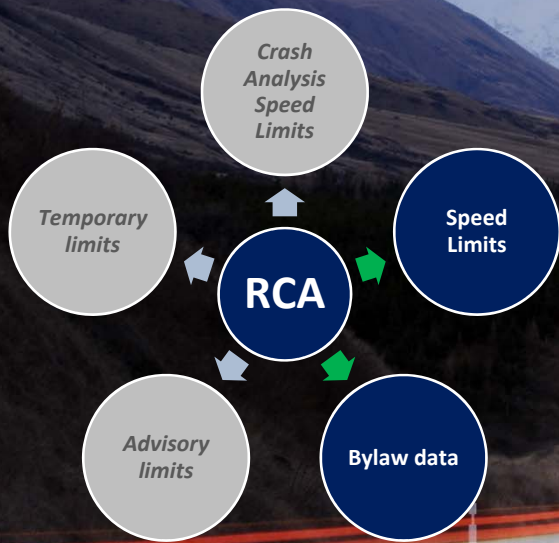
- Transport Safety
- Road to Zero
- Safe Systems approach
- National Land Transport Programme
- Safe Networks Programme

Benefits:

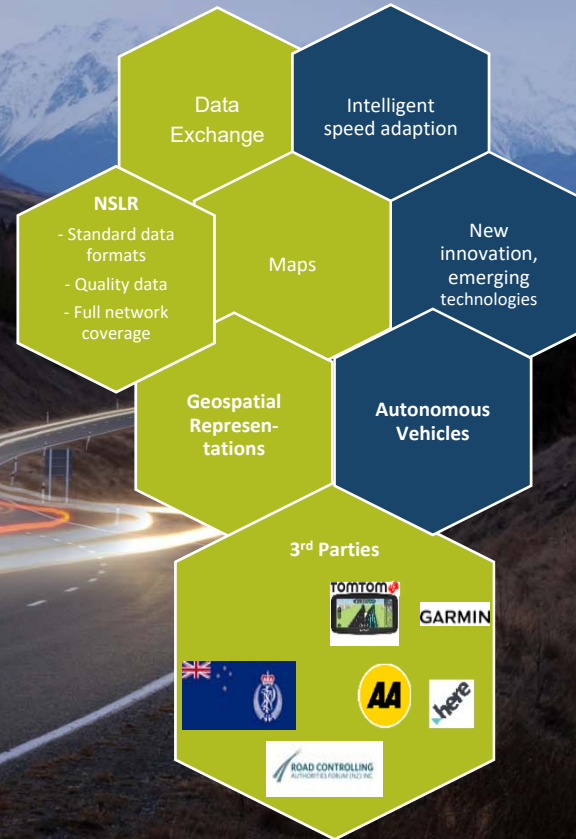
- Improved Road User Safety
- Utilisation of “Single Source of Truth” data
- Application of Speed Management Guide



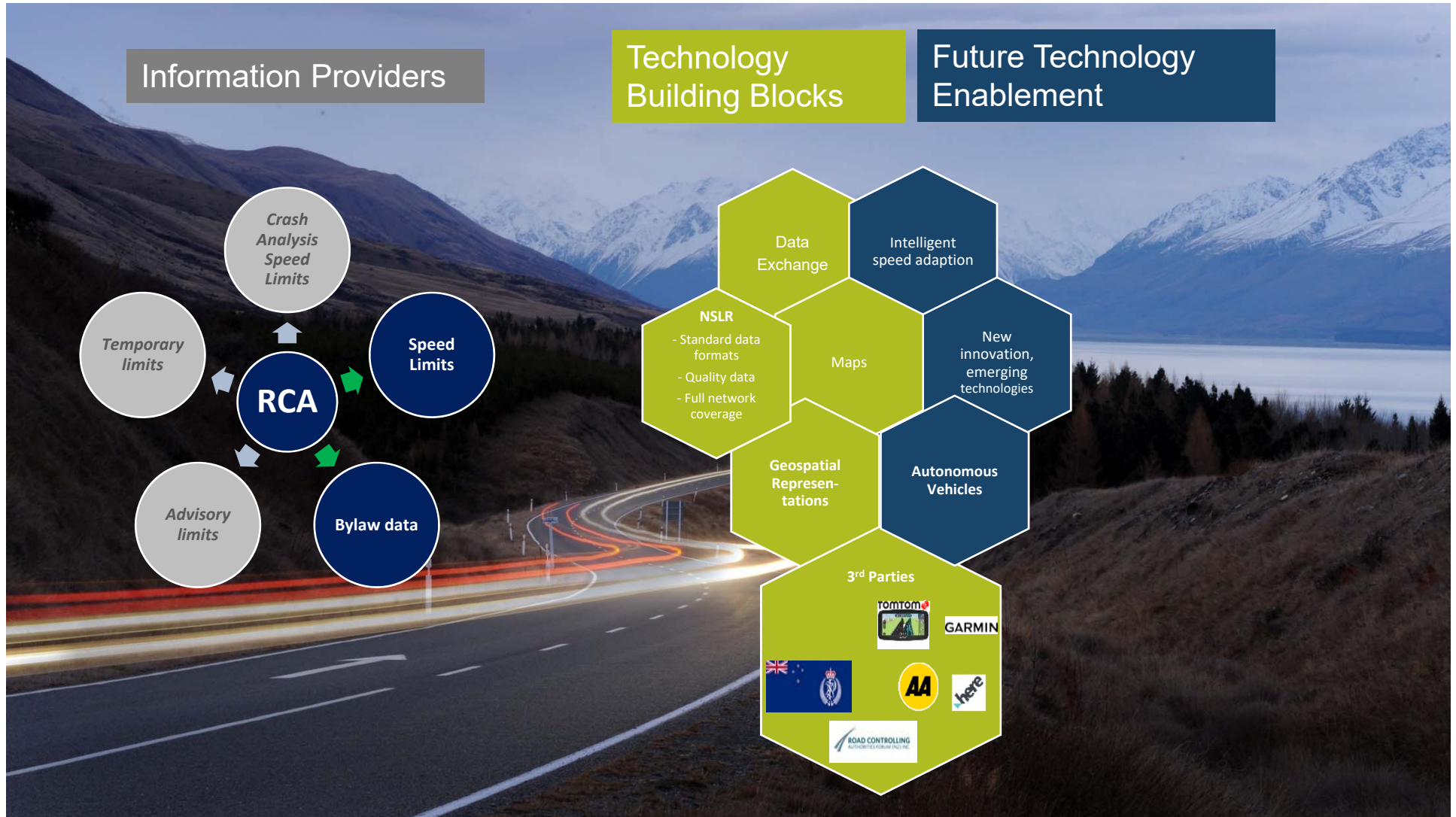
Information Providers



Technology Building Blocks



Future Technology Enablement





Enter Speed Limits

TEST_CCH_1 - Christchurch City

+ Add another speed limit

← 1 2 →

Fill in the form below and select an area on the map to complete a speed limit.

All fields are required unless otherwise stated.

Speed category:

Permanent

Area Options: (optional)

Not an Area Speed Area Urban Traffic

Speed limit:

50 km/h

Effective legal date:

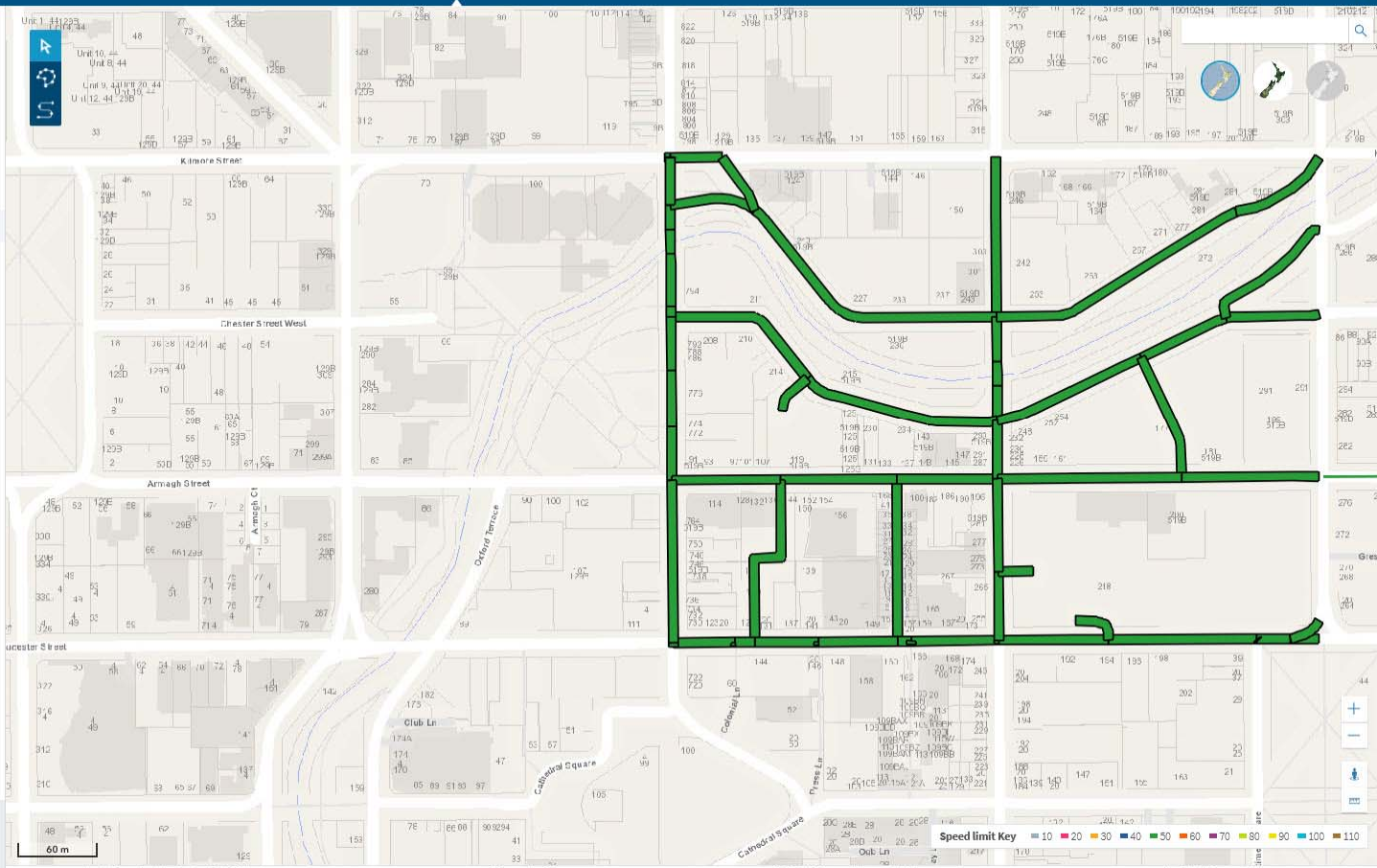
24 Nov 2019

+ Add a clarification to the map

Delete Speed Limit

Back

Step 3 >



Land Information New Zealand, Eagle Technology

Powered by Esri

© 2019 NZ Transport Agency, all rights reserved

New Zealand Government





Questions?