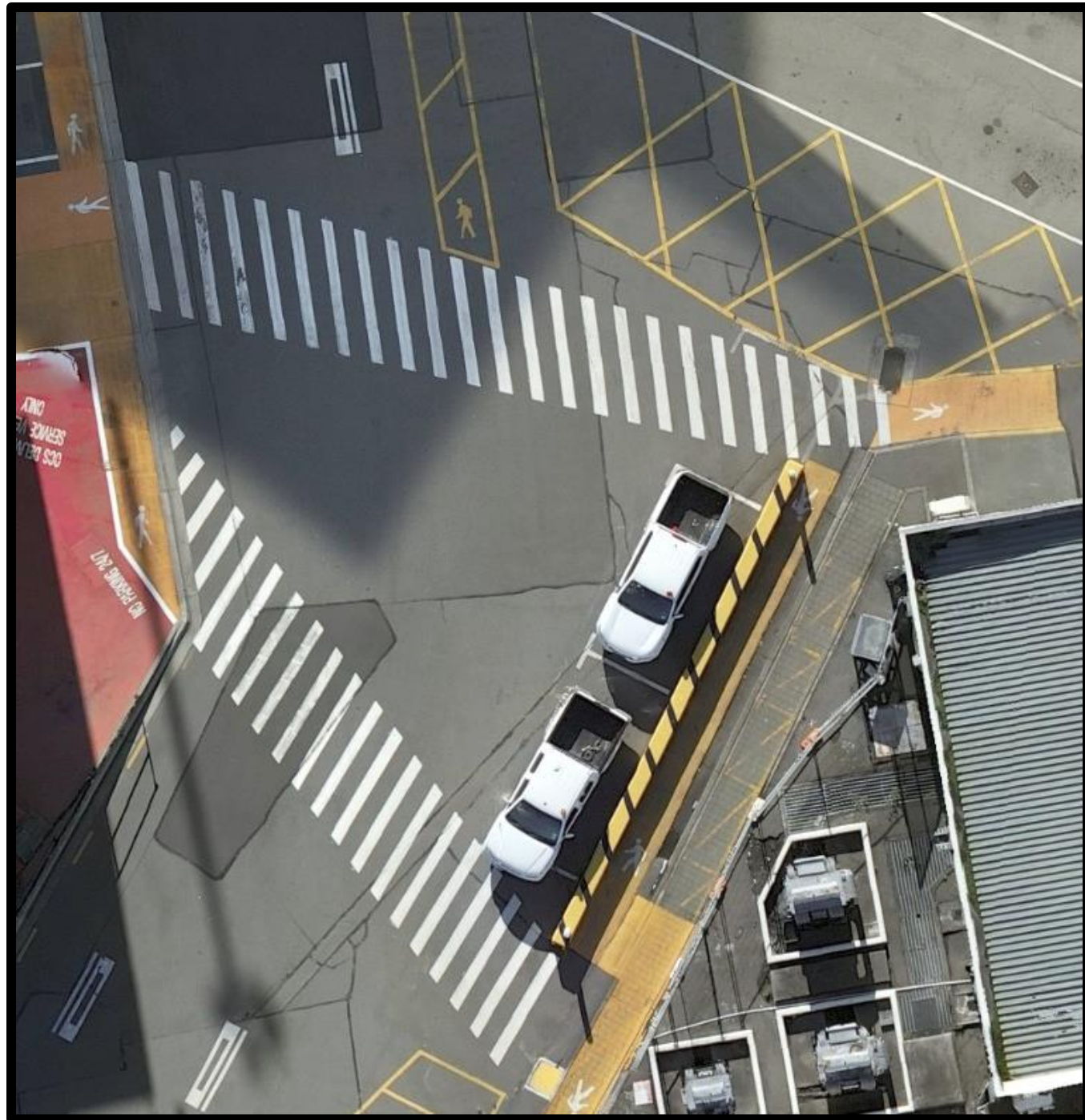
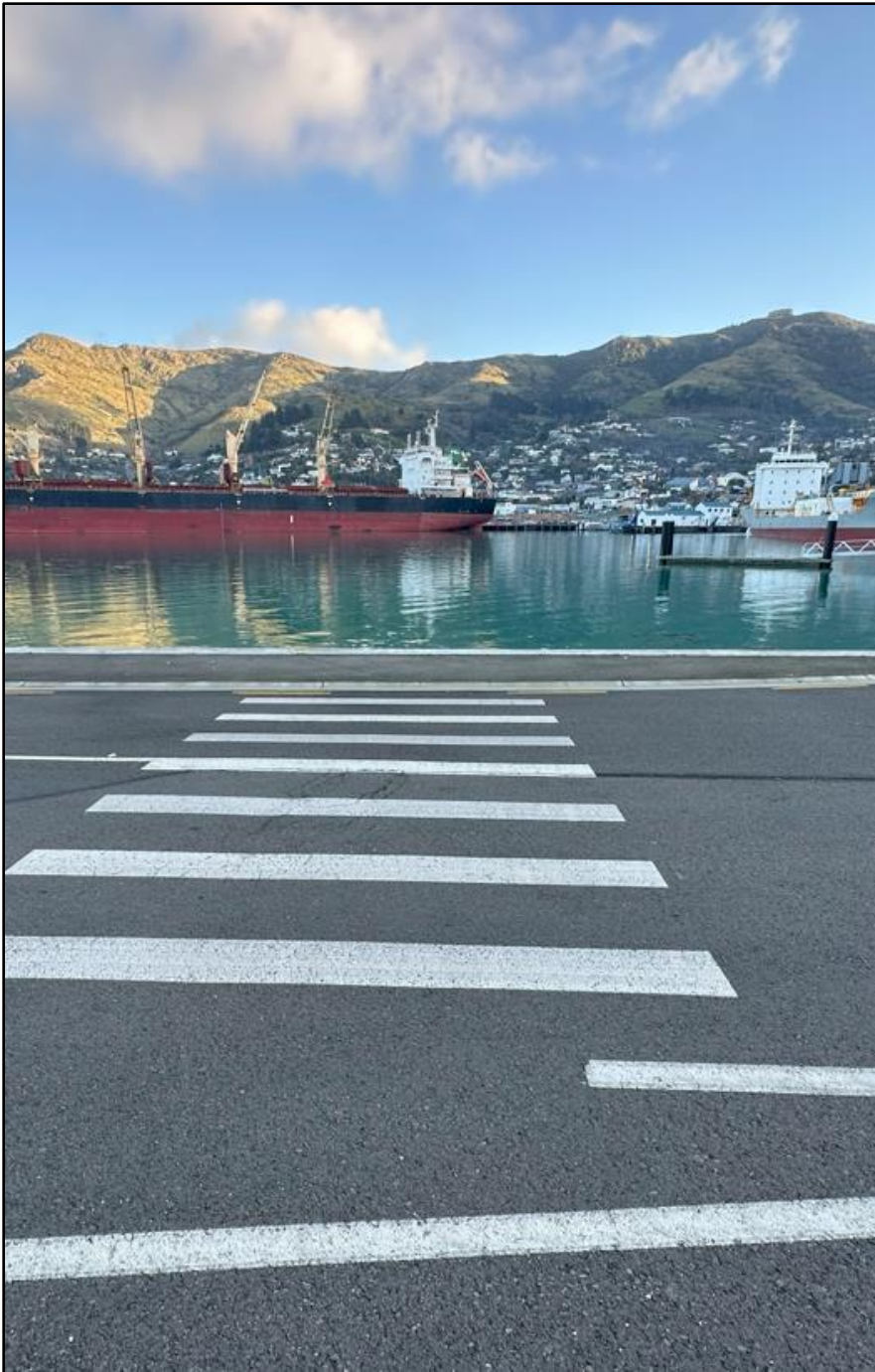


Pedestrian-Focused Best Practice in Private Contexts





Overview

1. Public vs Private Sites
2. Private Site Hazards
3. Current Practice in Private Sites
4. Used Guidance Documents
5. Pros and Cons of Applying Best Practice
6. Gaps in Best Practice
7. Conclusion



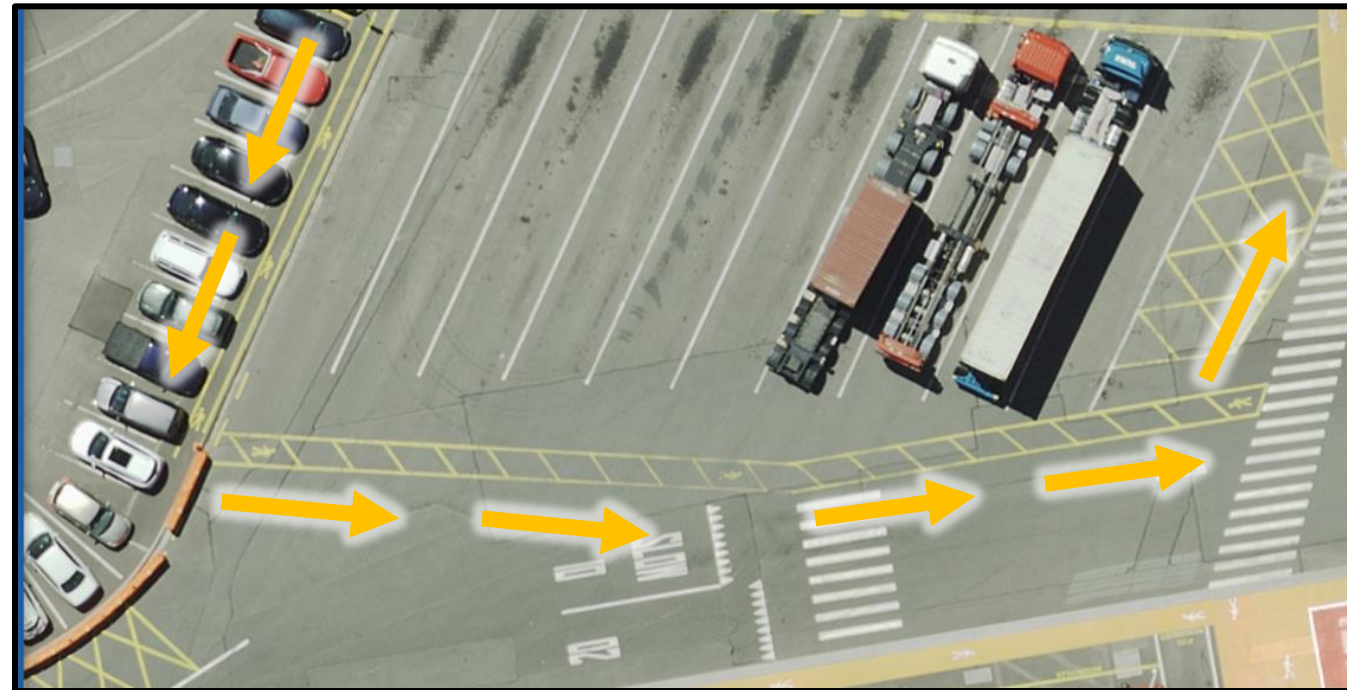
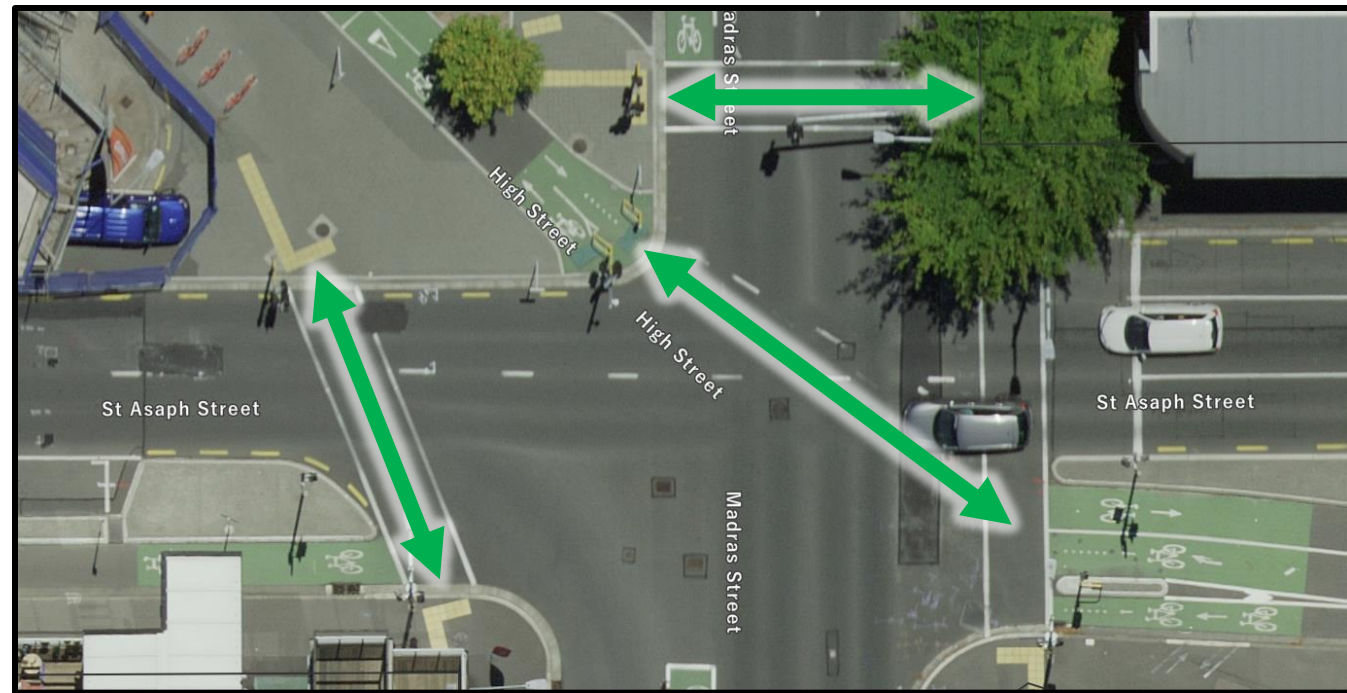
Public vs Private Sites

- **Public Sites**

- Pedestrian and light-vehicle dominated
- More familiar to general users
- Direct routes from A to B

- **Private Sites**

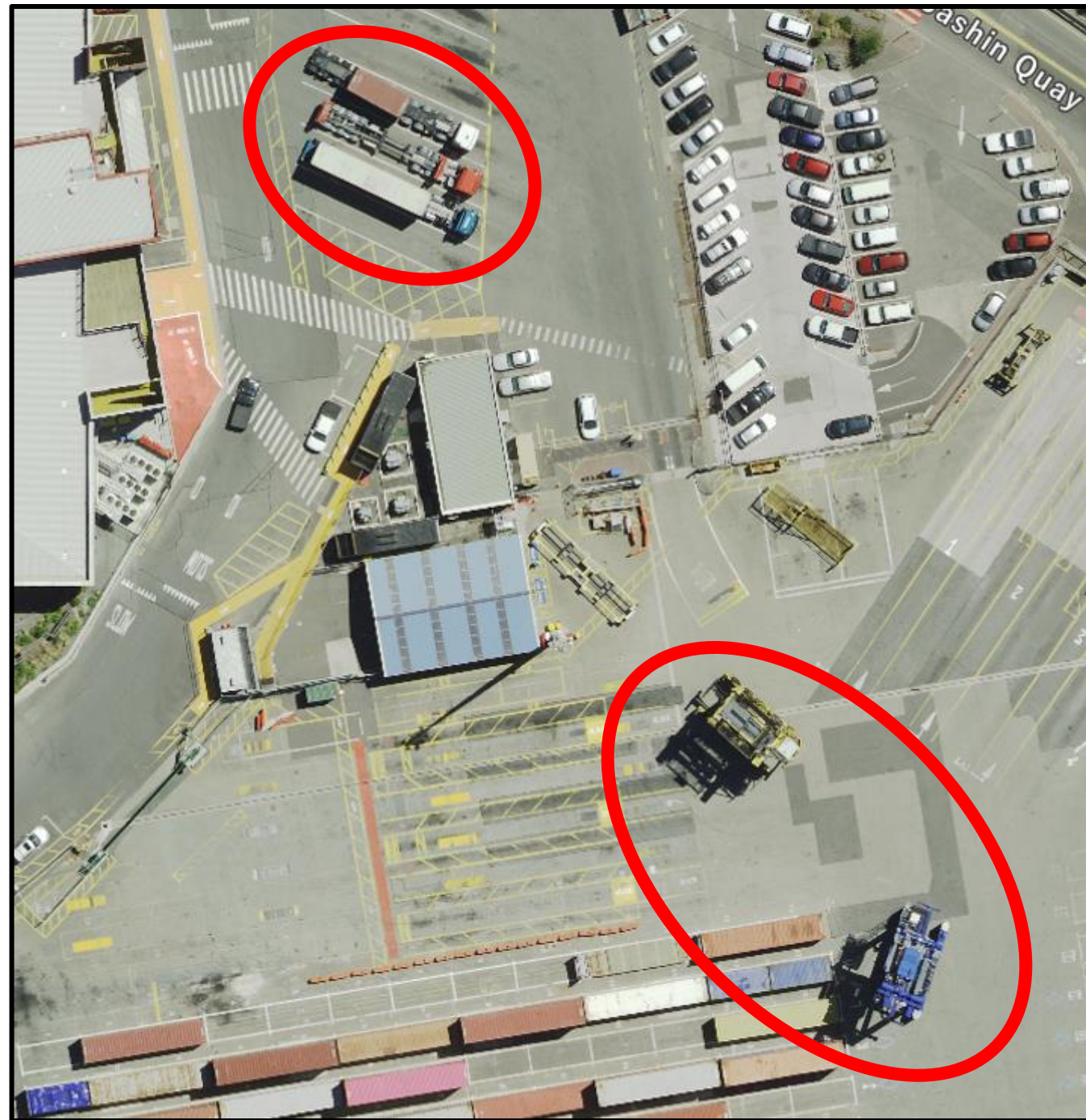
- Heavy vehicle and machinery-dominated
- Mostly regular users (e.g., staff)
- Indirect routes around operational areas





Private Site Hazards

- **Industrial / Commercial**
 - Heavy vehicles and machinery
 - Staff and vehicle operators
 - Visitors and contractors
 - Shared operating and pedestrian areas





HYSTER

46-41

MAERSK

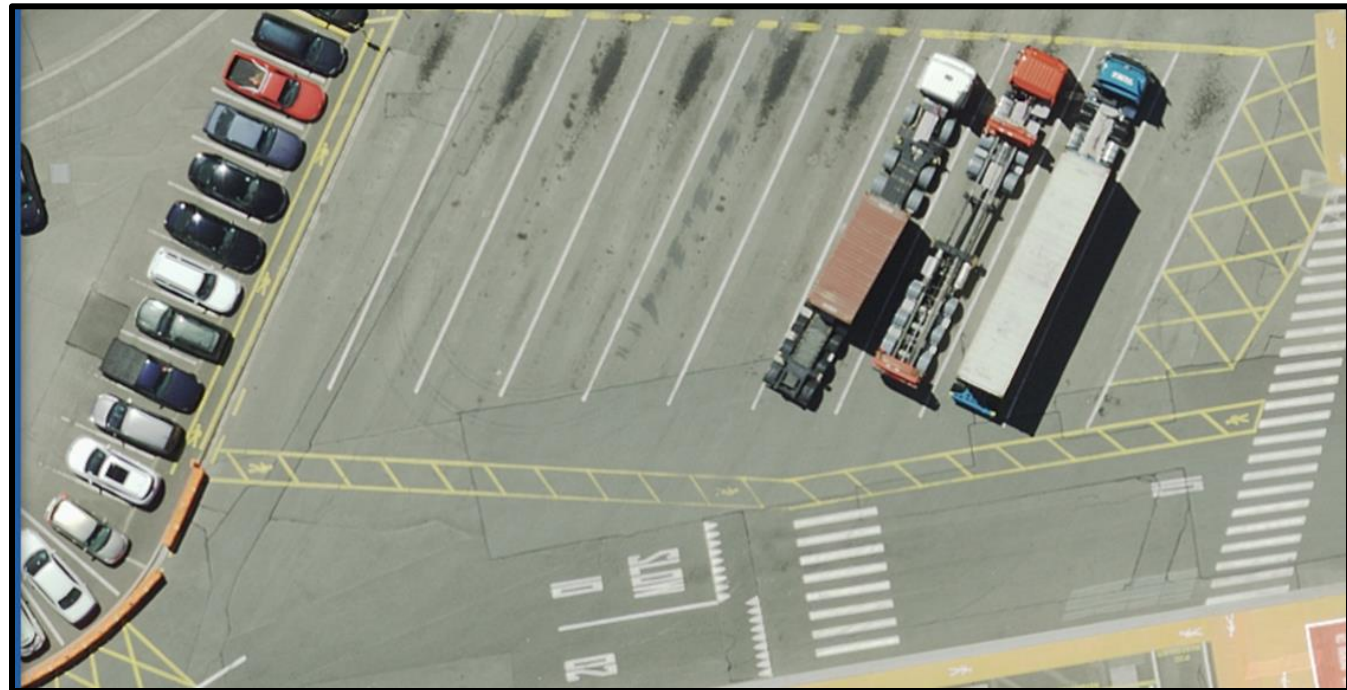
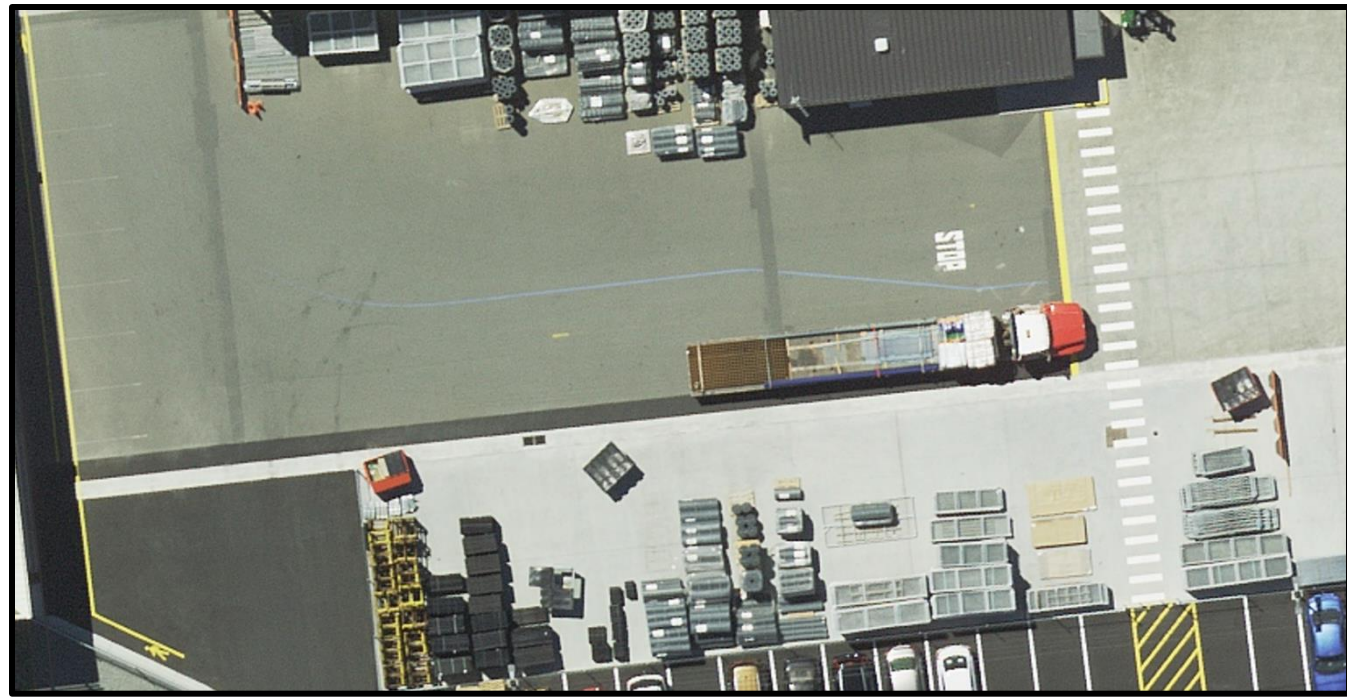
MAERSK

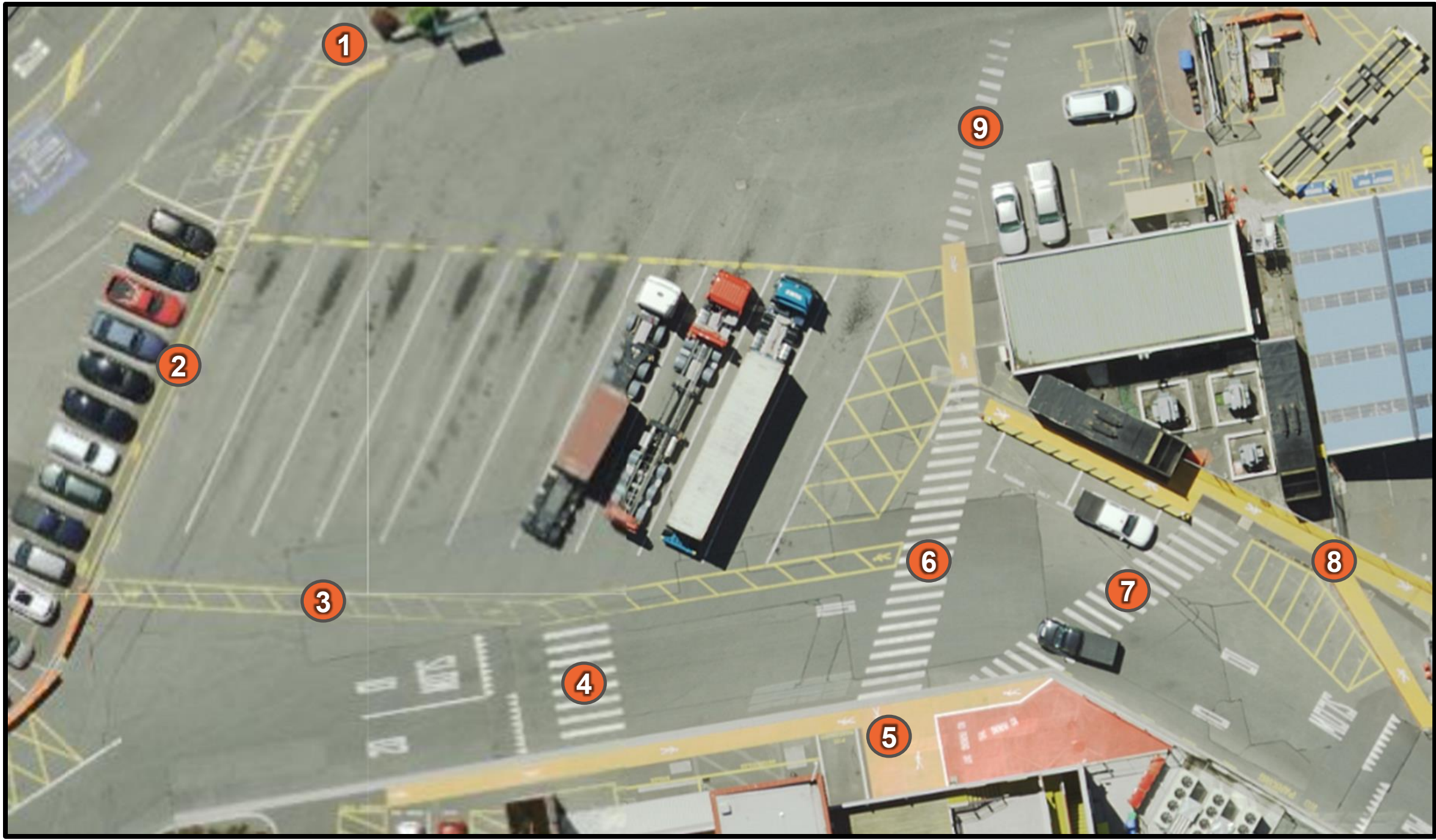
MCRU
206 449 8
22R1



Current Practice in Private Sites

- Lack of consistency
- Many different forms of pedestrian routes
- Dominant colour (**yellow**)
- May be designed by people with limited formal training

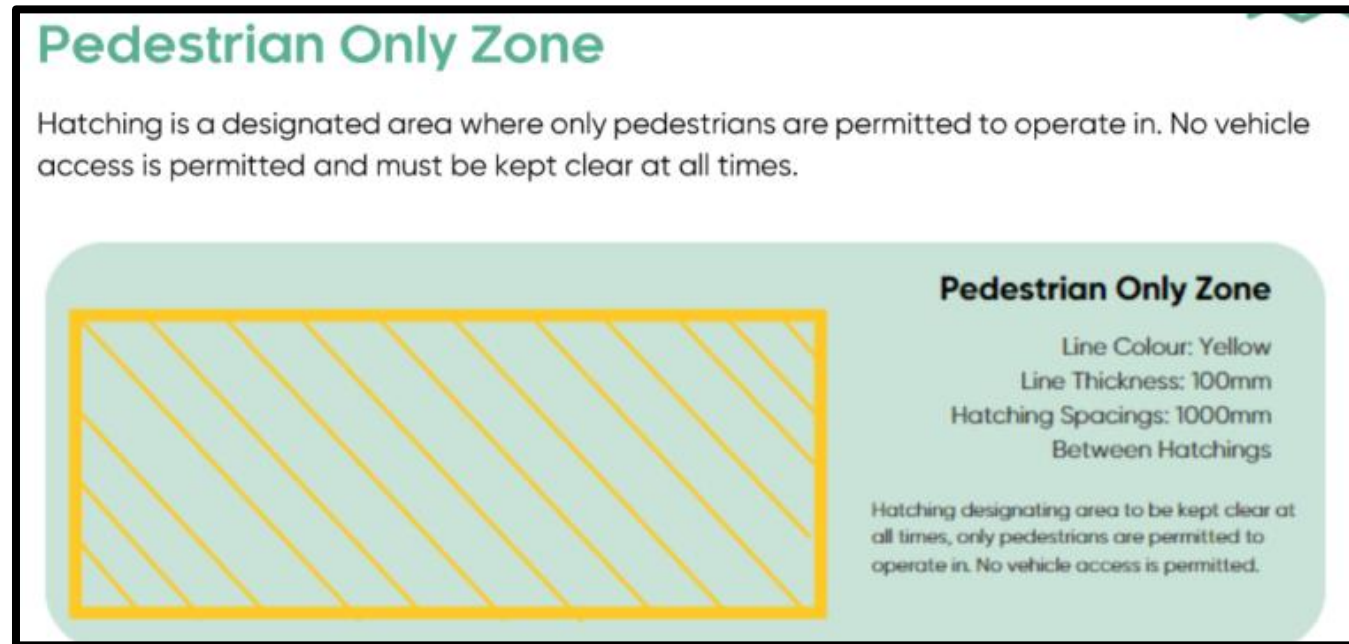
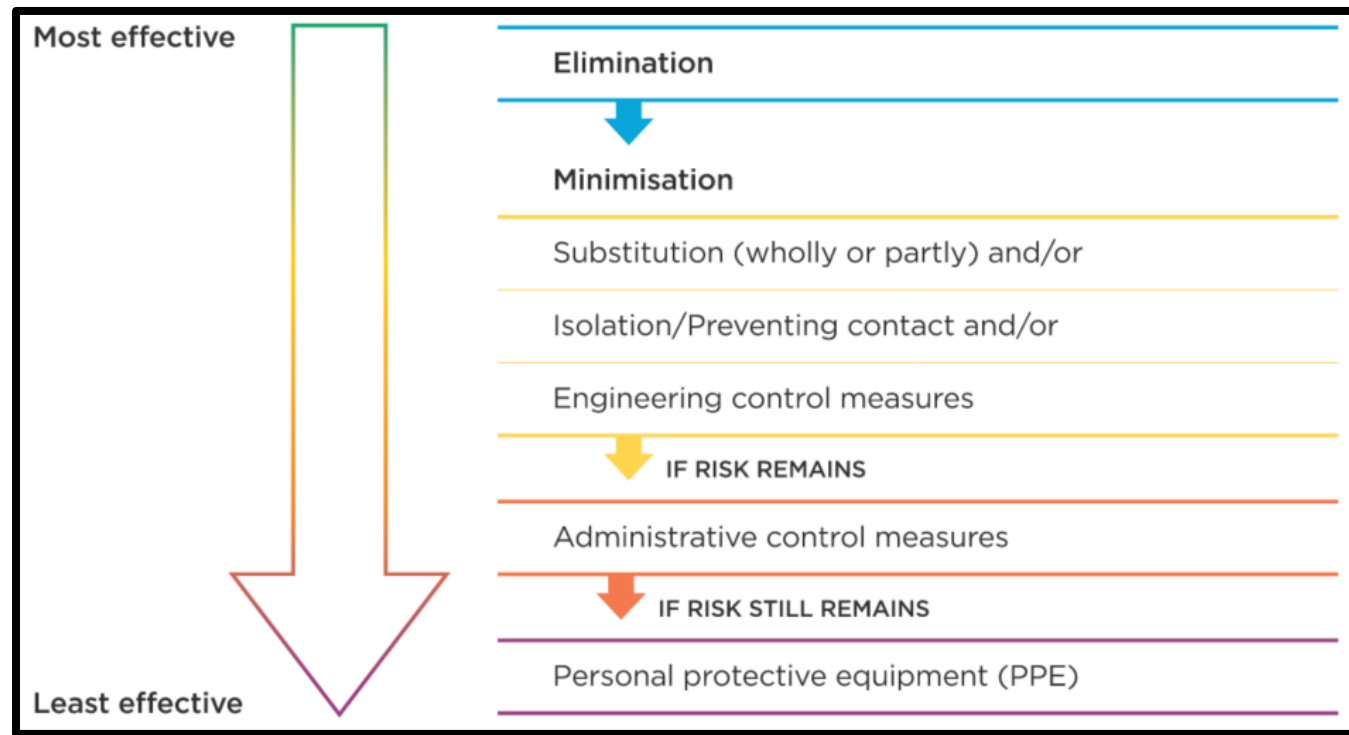






Used Guidance Documents

- Pedestrian Network Guidance (NZTA Waka Kotahi, February 2025)
- Managing Work Site Traffic (Worksafe, February 2021)
- ShopCare Line Marking Guidance (ShopCare, May 2024)





Pros and Cons of Applying Best Practice

Pros

- Provides design methodology
 - Universal Design
 - Clear and Effective
 - Simple and Concise
 - Consistent
- Industry accepted

Cons

- Gaps in guidance and does not consider private site context
- Differences between best practice and other documents

Pedestrian network guidance

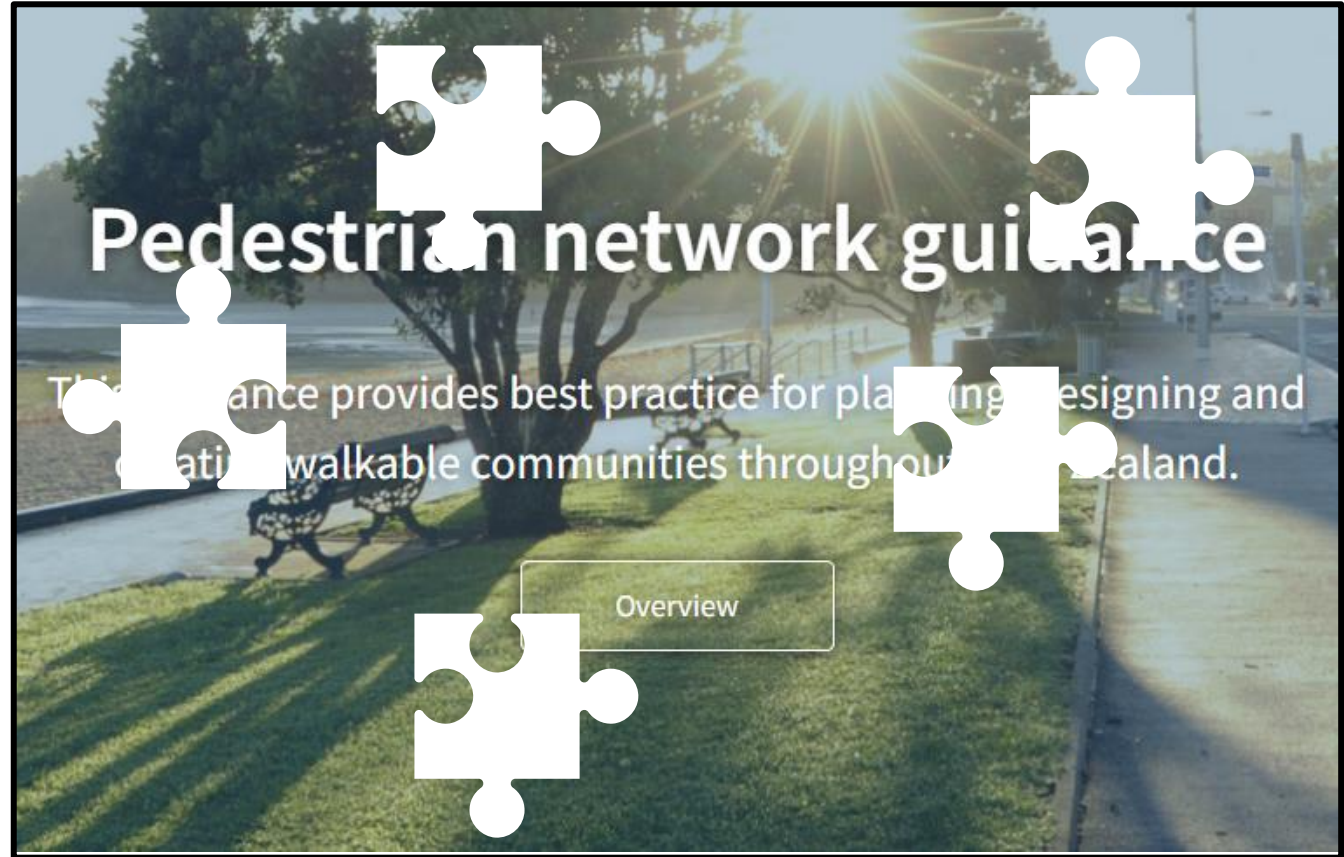
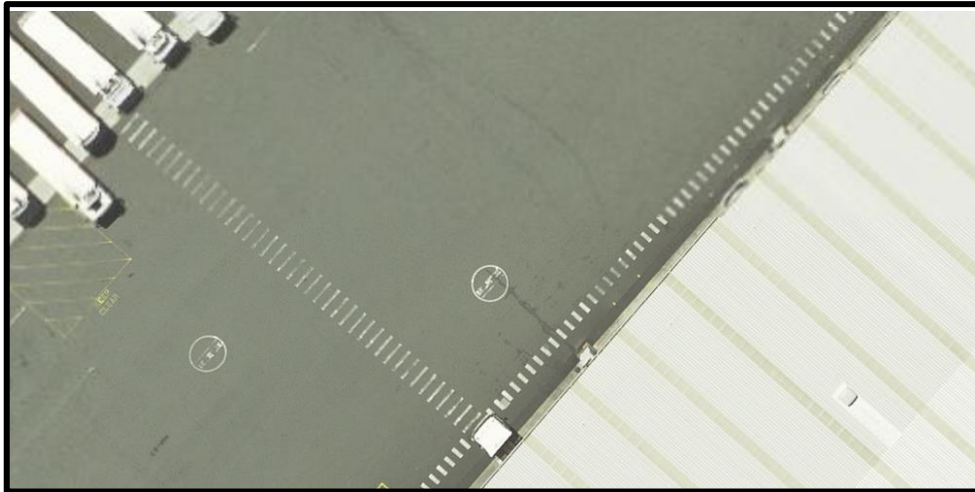
This guidance provides best practice for planning, designing and creating walkable communities throughout New Zealand.

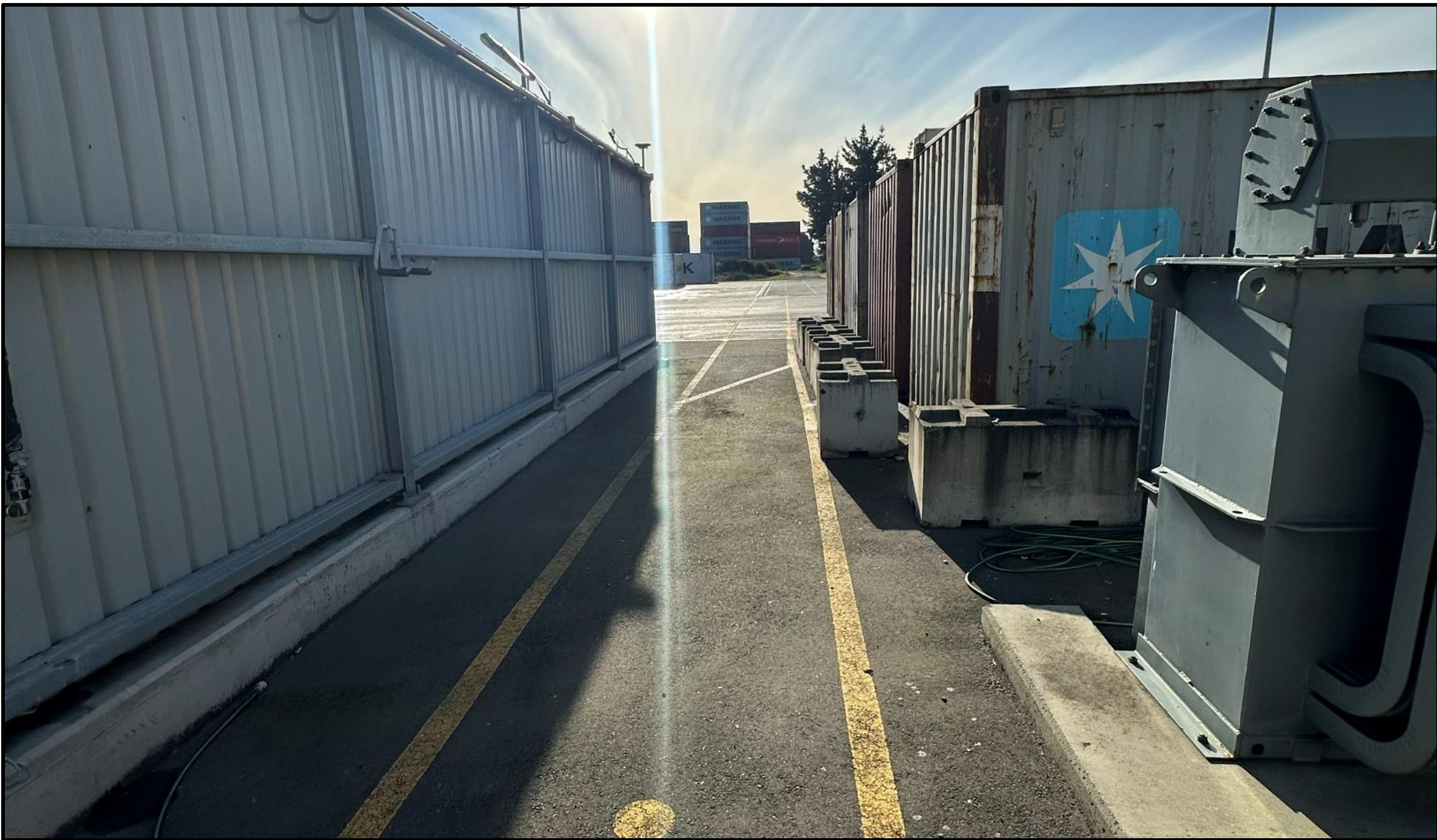




Gaps in Best Practice

- Private site context not considered
 - Different hazards
 - Crossing arrangements
 - Constrained environment
 - Material, marking, maintenance







Conclusion

- Best practice provides good design methodology
- Understanding the hazard is essential
- Constraints to applying best practice
- Current best practice expanded to cater for more diverse environments
- Opportunity as an industry to get involved



Thank You

