

Te Kapehu

Our Compass

Dr Deborah Hume
Establishment Manager
Multi Modal and Innovation

Our 21st century challenges

Obesity and
unhealthy
lifestyles

Lack of
affordable
housing

Road deaths
and serious
injuries

Emissions
reduction

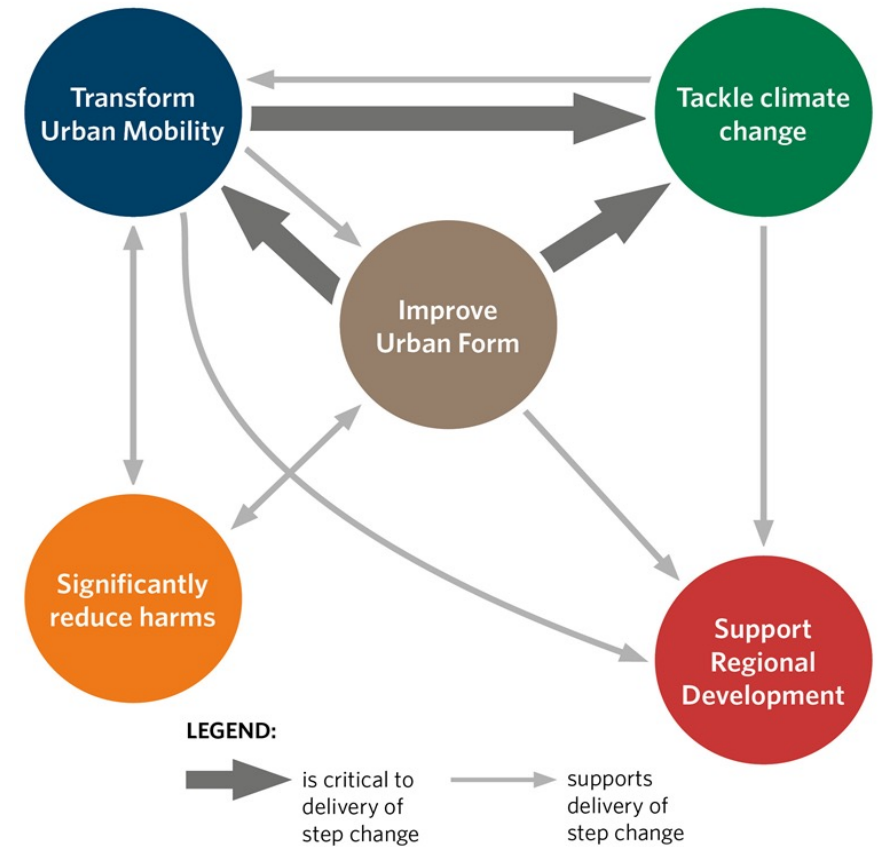
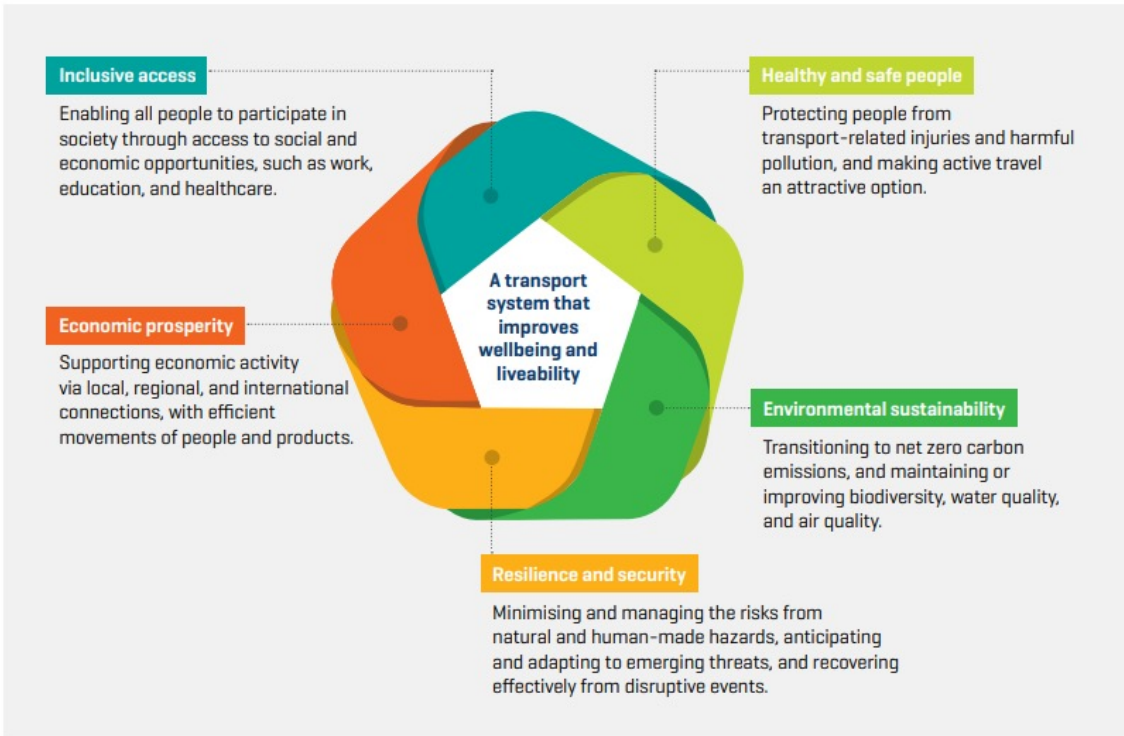


The difference we want to make

We want Aotearoa to have a land transport system that is:

- **Safe** – fewer deaths and serious injuries and people feel safer using all modes
- **Meeting current and future needs** – have access to the people, funding and systems we need to deliver essential levels of service, without burdening future generations
- **Environmentally sustainable** – reduced greenhouse gas emissions from transport and support land, air and biodiversity resources to thrive. We avoid, or at least minimise, the impacts of noise and air pollution.
- **Effectively and efficiently moving people and freight** – people and businesses can choose transport options that are suited to their task, trip and location; networks are available and reliable at consistent levels of service; and they represent value for money and are affordable for all users

Transport Outcomes Framework



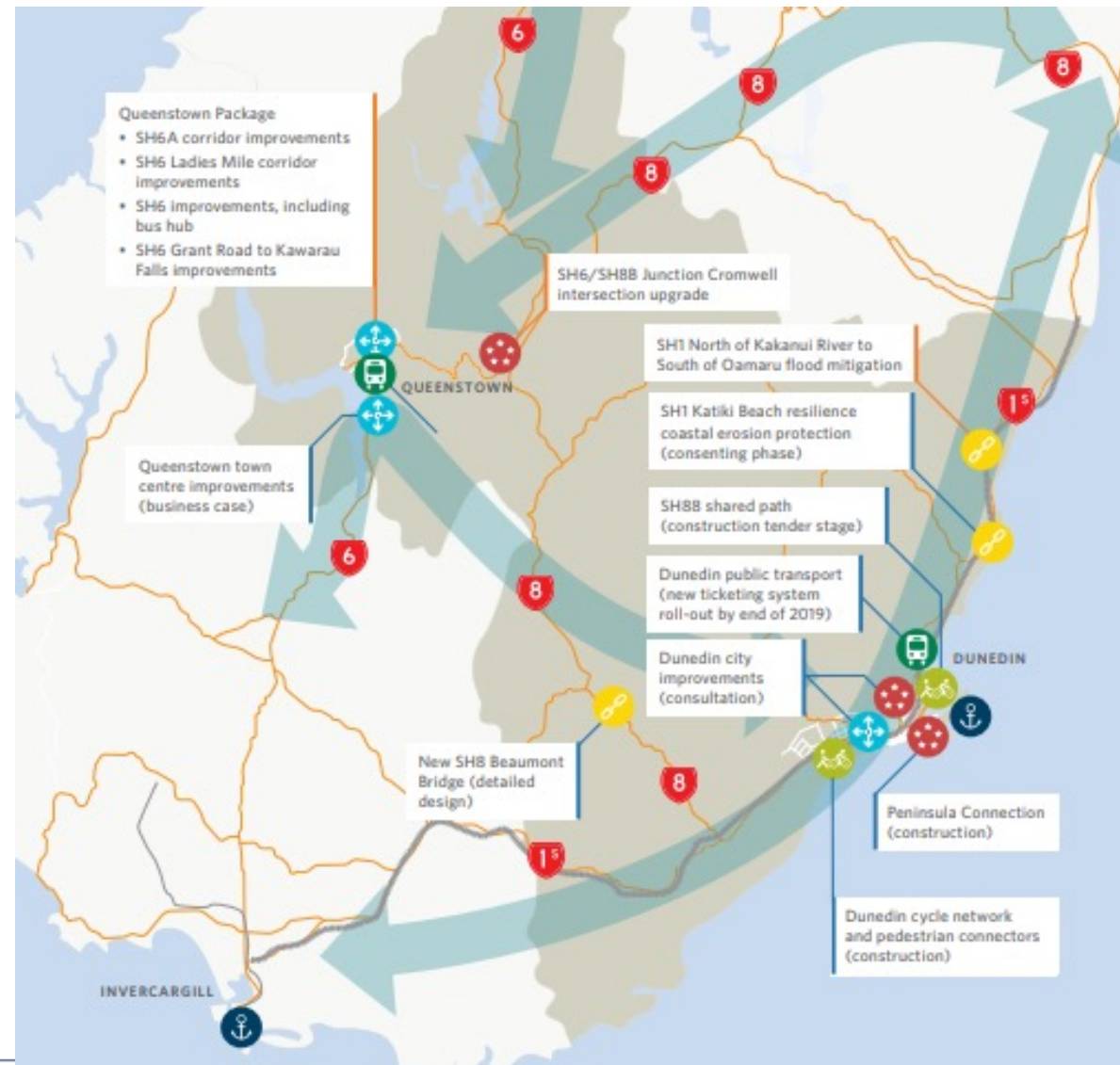
Arataki – our key shifts

Arataki

Setting direction for the next decade

Dunedin – case study

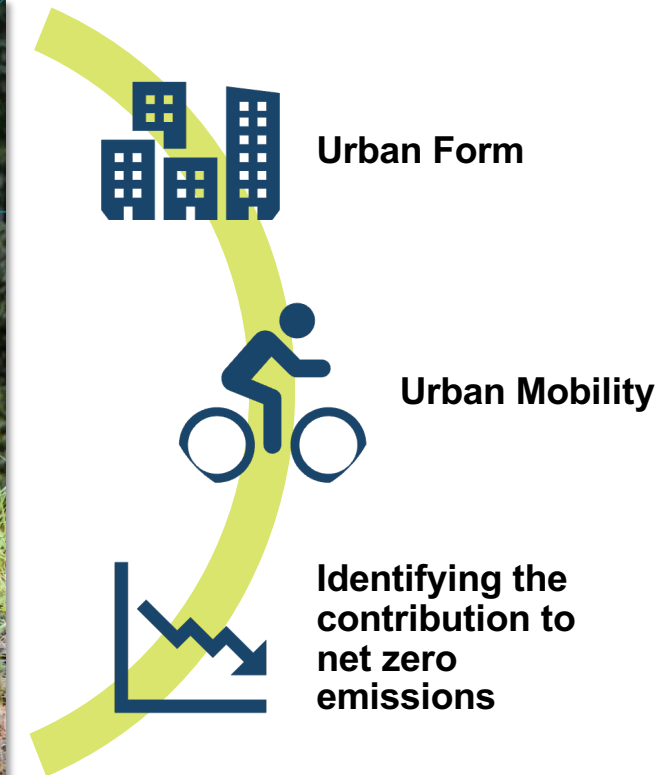
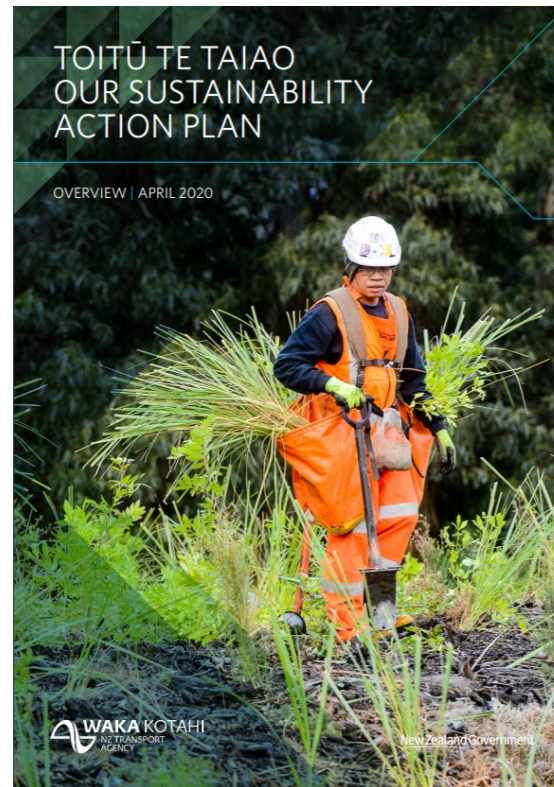
- Current state: limited access to public transport and poor walking and cycling facilities
- Future state: supporting urban development in Dunedin to enable thriving communities and encourage increased use of public transport, walking and cycling



Toitū Te Taiao

Sustainable Urban Access Workstream

- Mode shift and urban form package, accelerates mode shift from private vehicles to active and shared travel options
- Low carbon optimisation package, optimise existing networks in ways that boost the uptake of low carbon, safe and healthy travel choices



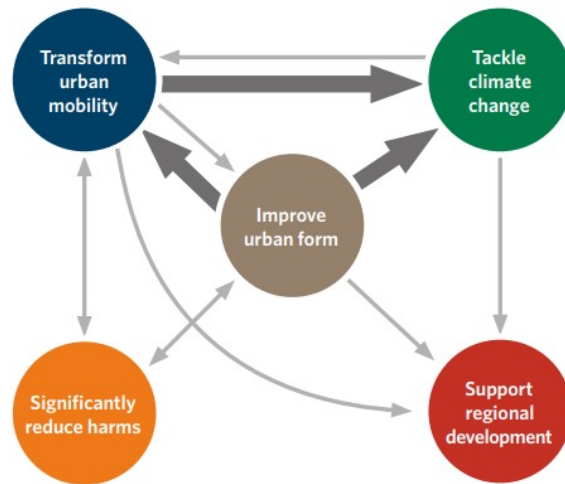
Keeping Cities Moving

Our mode shift plan

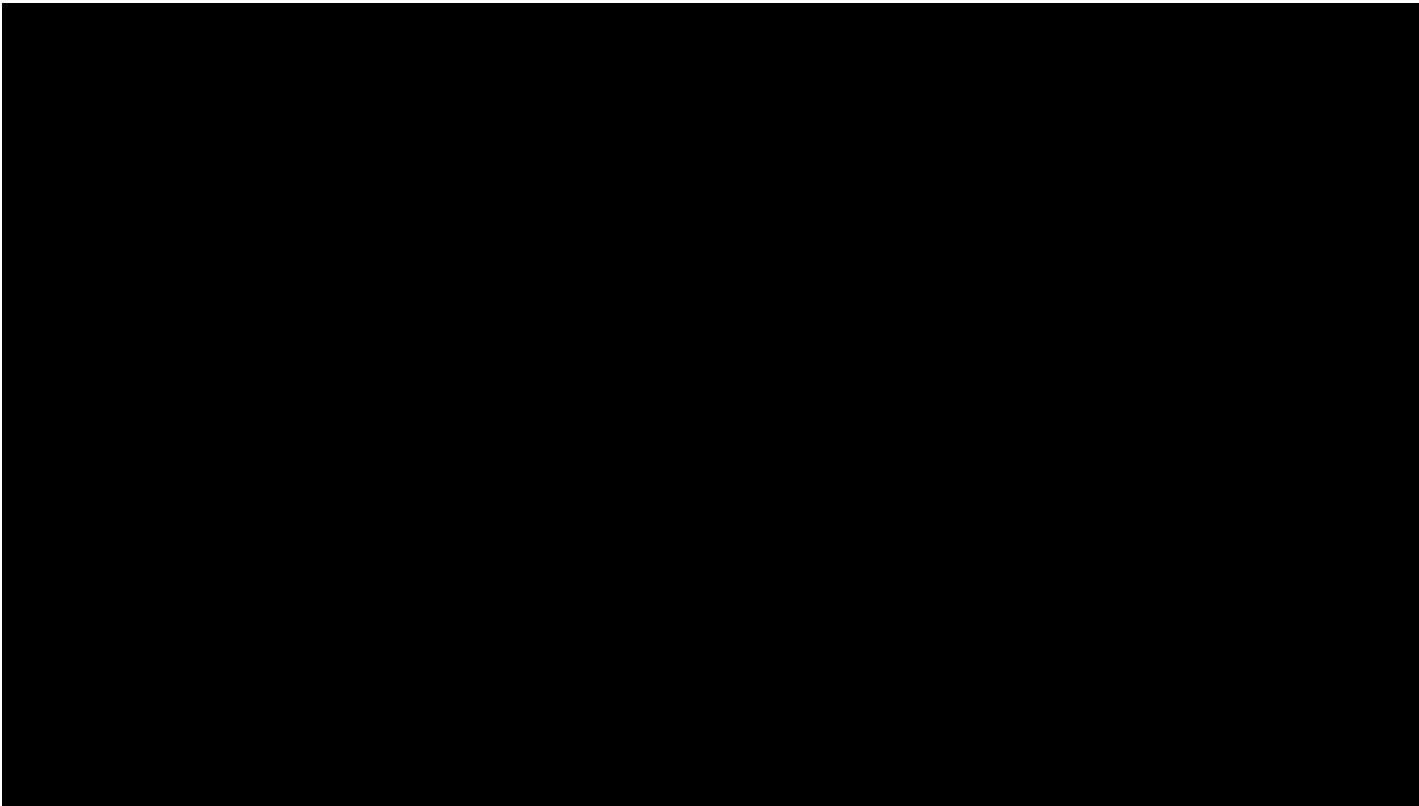
- A key delivery mechanism of the Arataki step changes

HOW THE STEP CHANGES WORK TOGETHER

Figure 05

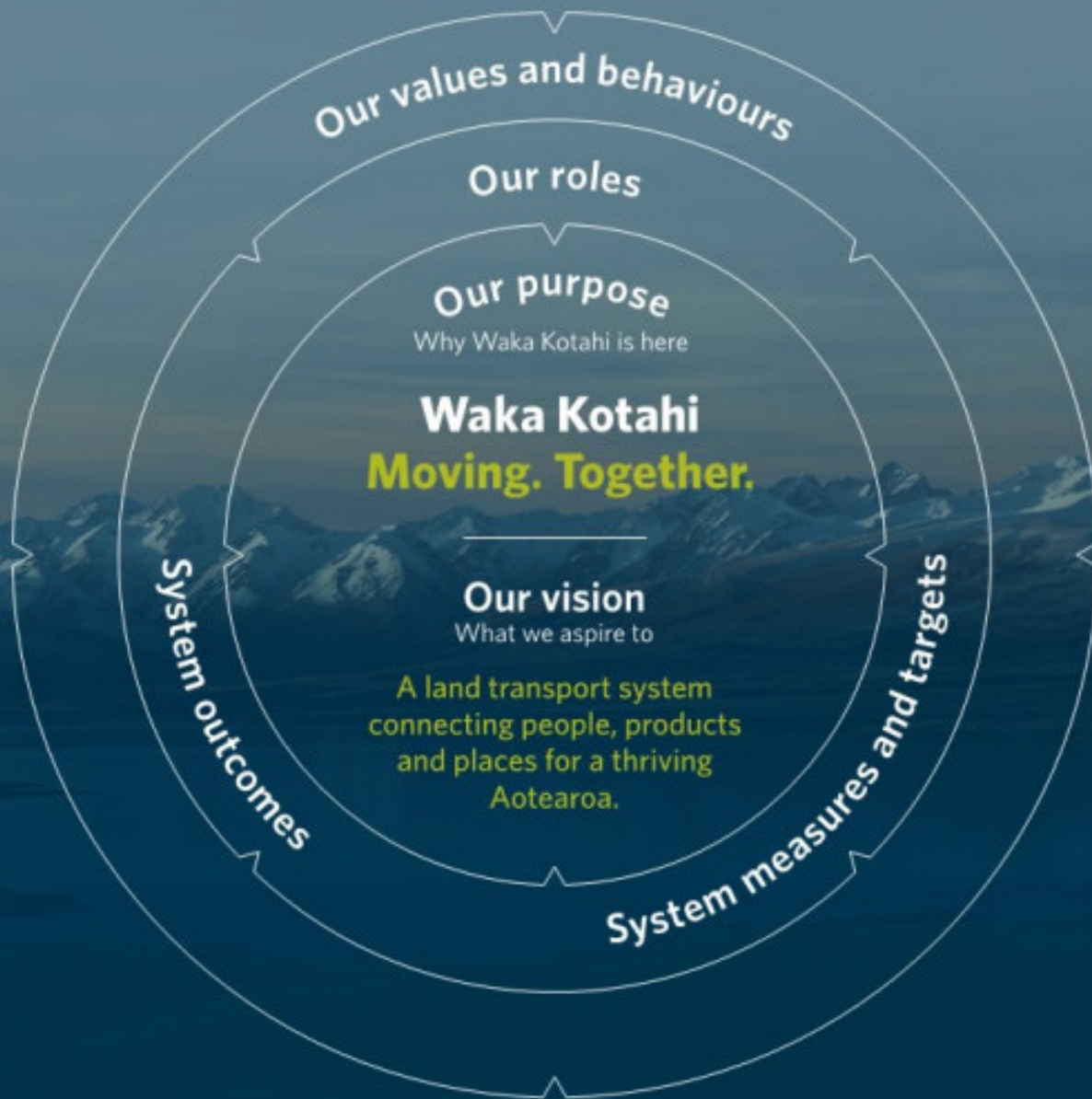


Taking a systems approach



Te kāpehu

Our compass

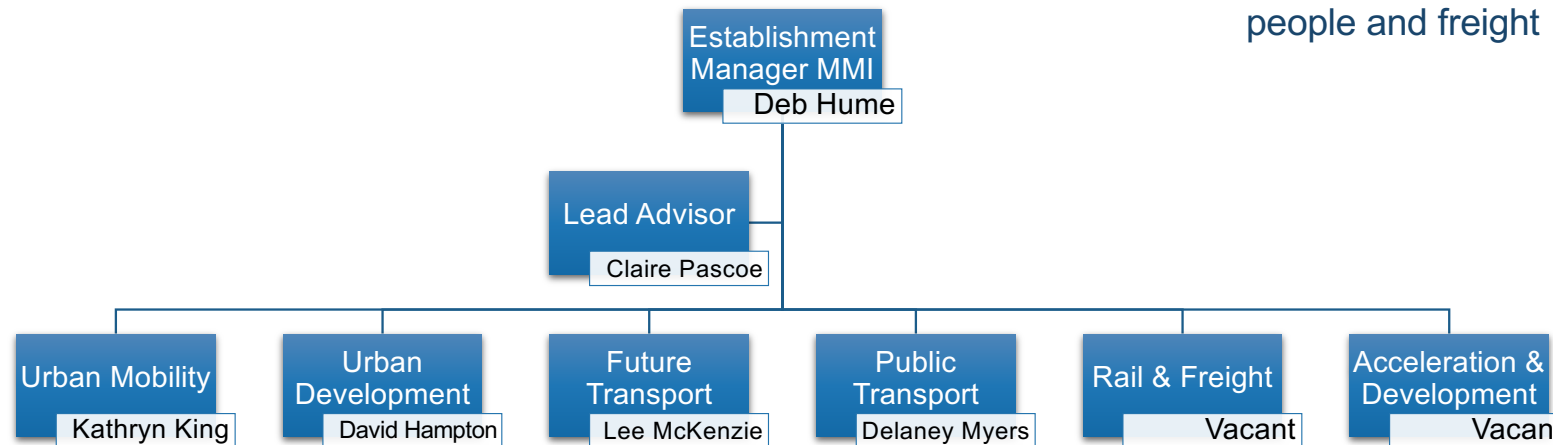


Multimodal and Innovation team

We are:

- a catalyst for transport change, influencing and exploring future transport solutions with a whole-of-system lens
- Implementing government commitment to climate challenge
- Incubator for new ways of working, addressing system barriers and increasing sector capability

- ✓ Safer modes made safer to use
- ✓ Meeting current future needs for people and the economy
- ✓ Environmentally sustainable and tackling climate challenges
- ✓ Effective and efficiently moving people and freight



Questions

