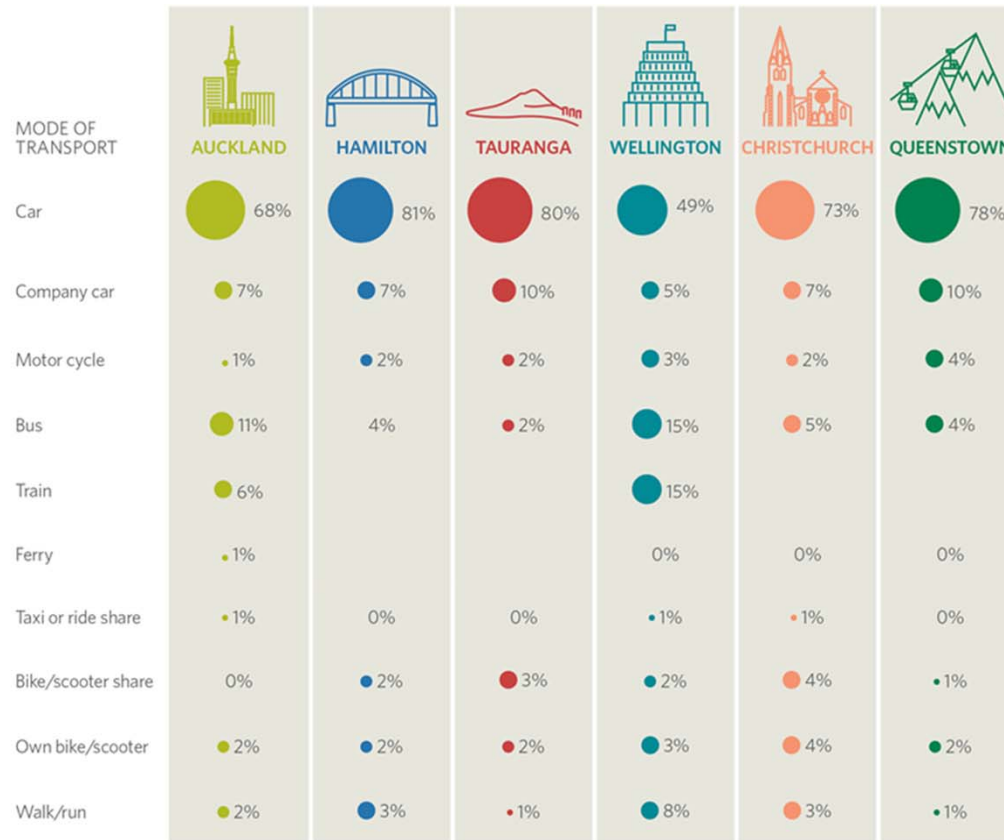


Innovating Streets for People

Making it easier and faster to transition to safer and more liveable streets







CYCLING MODAL SPLIT IN THE NETHERLANDS



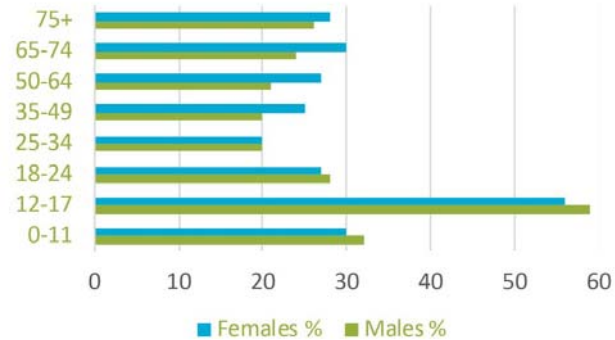
Reverse Gender Modal Split



21% Mode share for Non-Western women of all ages groups
* 1st and 2nd generation

MOBYCON.COM

Reverse Age Modal Split



Paradigm shift for our towns and cities

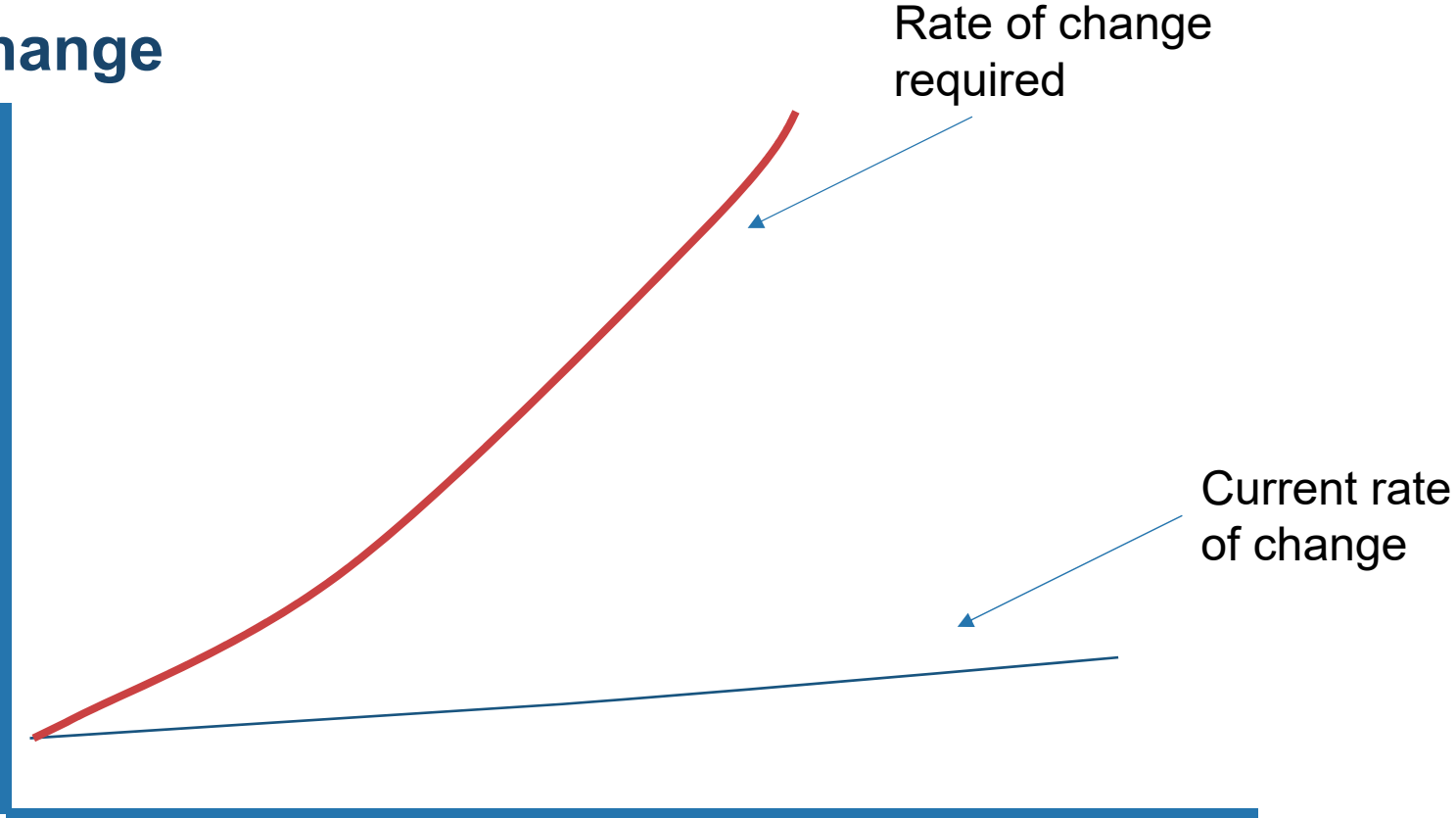


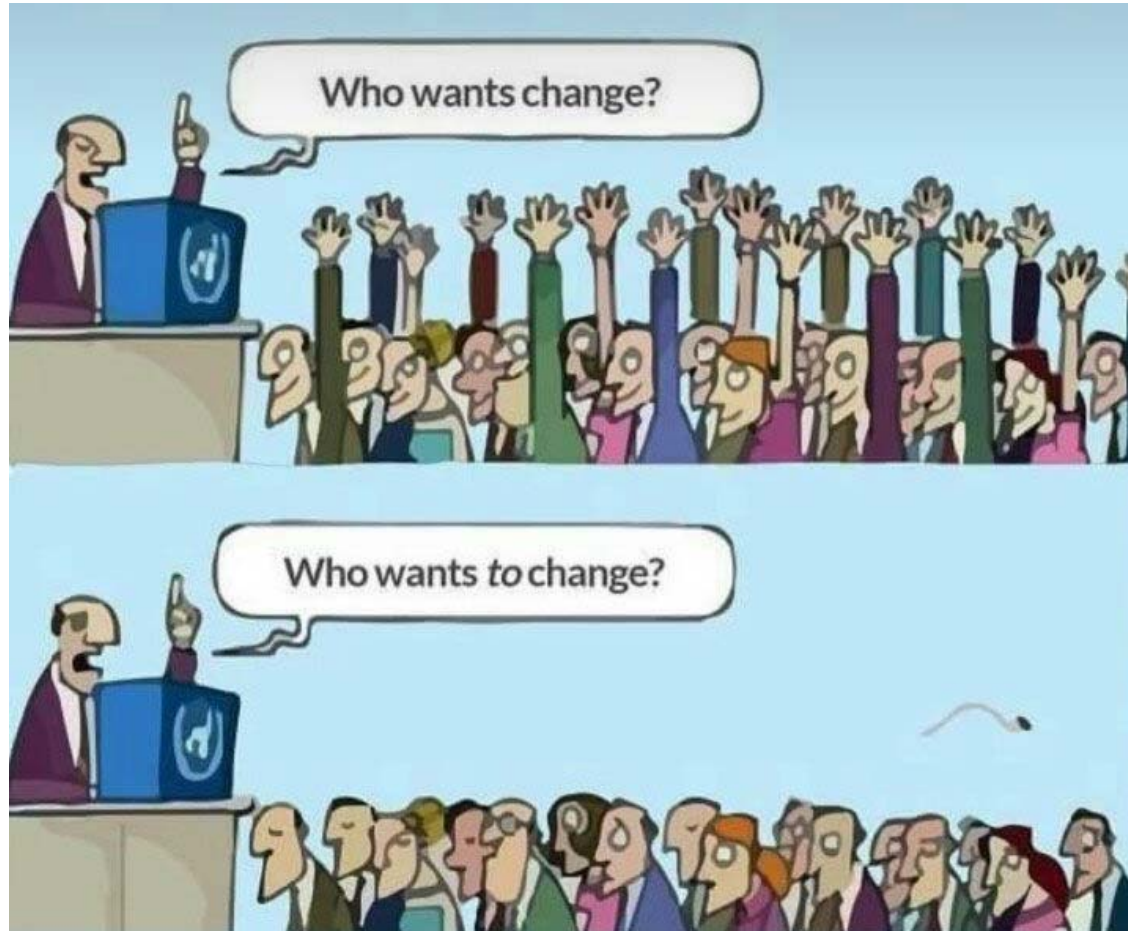


Artist impression – possible solution

JERVOIS QUAY

Pace of change

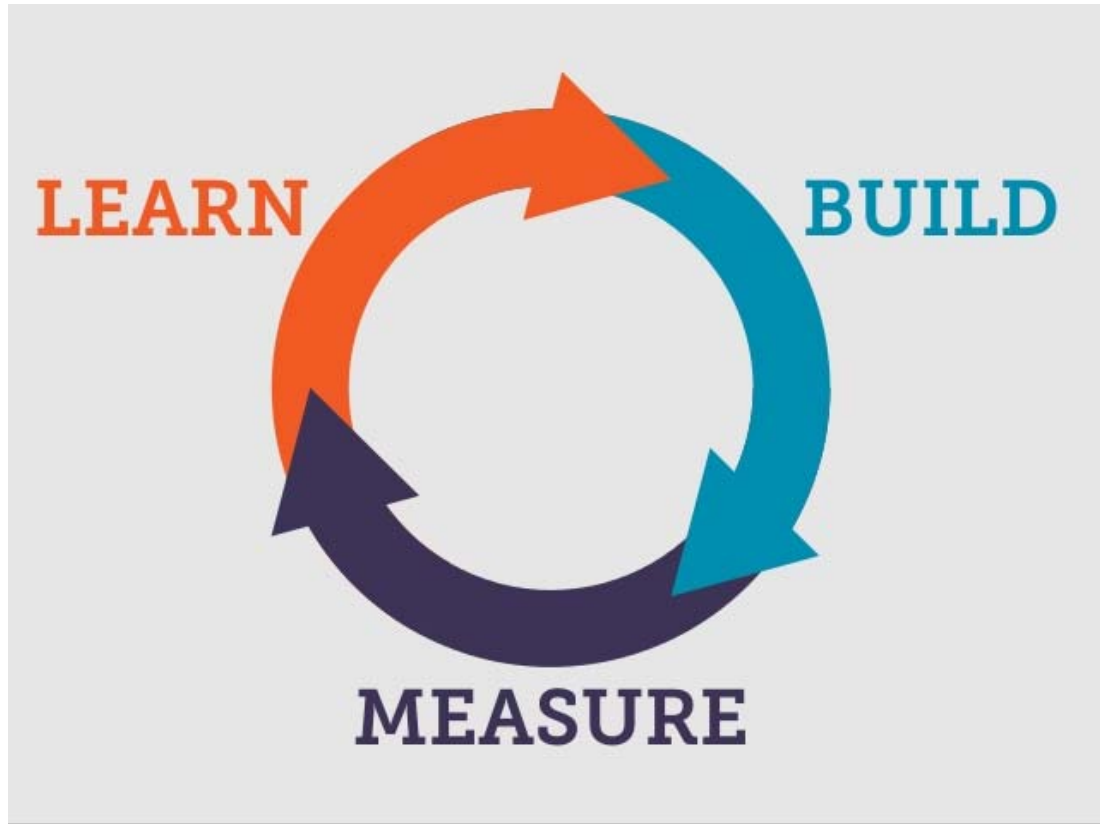






Privilege is when you think that something's not a problem because it's not a problem for you personally.

David Gaider



Pop-up



1 day to 1 week

Pilot



1 week to 12 months

Semi-permanent



A number of years



















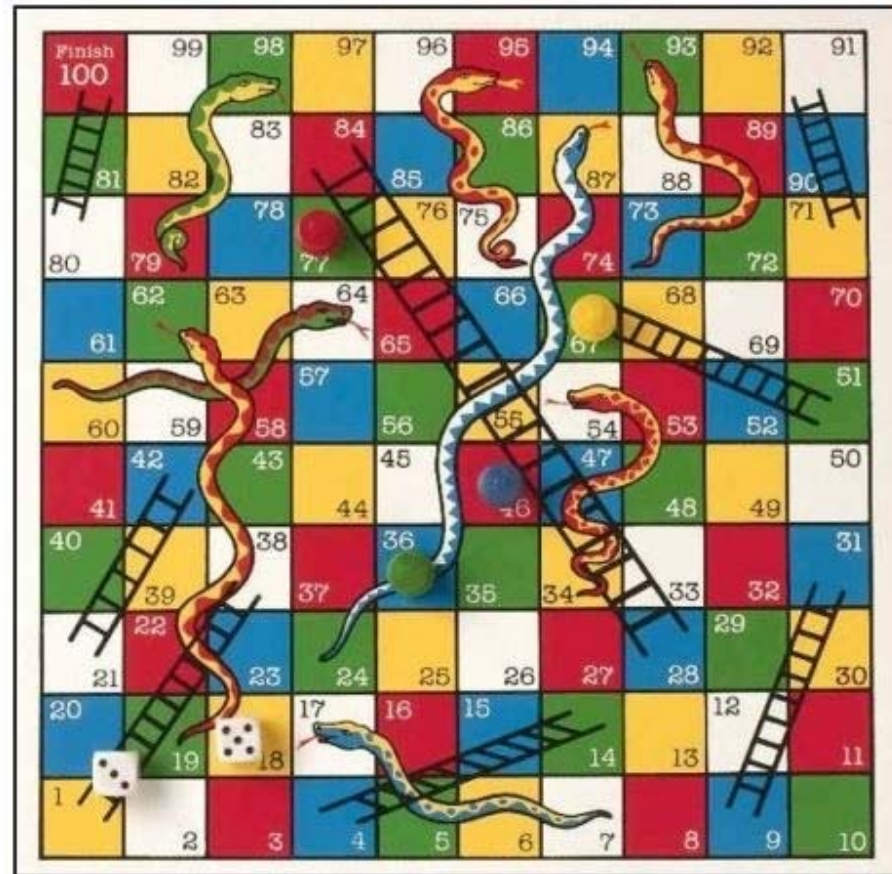




**34 out of 45
respondents found it
NOT EASY AT ALL to
deliver such projects**

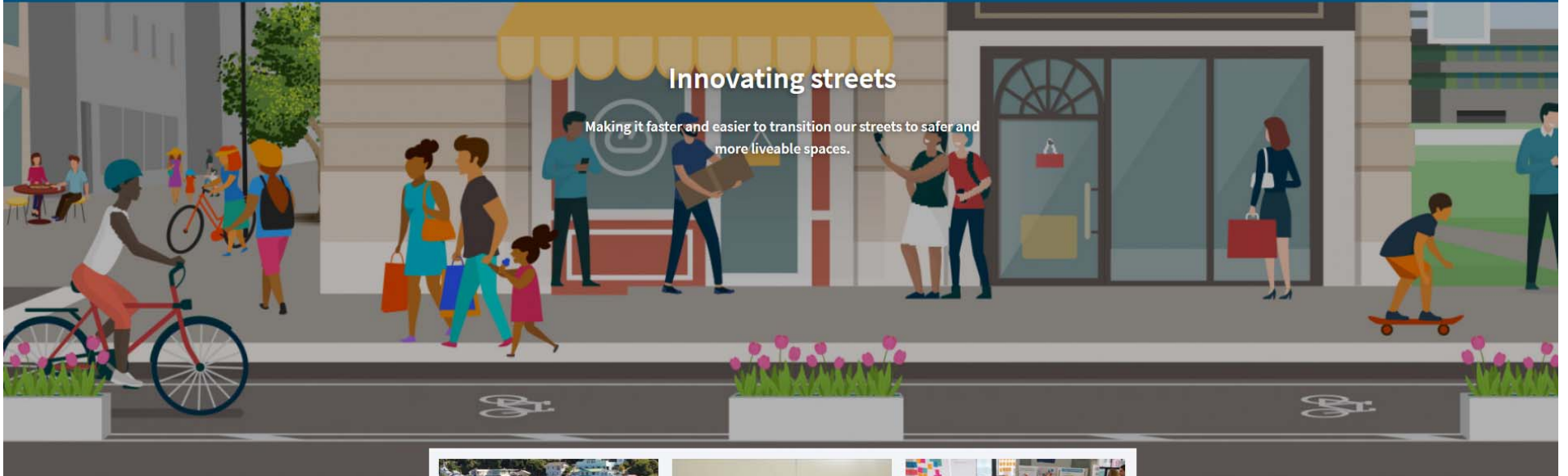


“It’s a bit like snakes and ladders, with no ladders”



Innovating streets

Making it faster and easier to transition our streets to safer and more liveable spaces.



INTRODUCTION

Great street design helps make towns and cities great places to live, work and play.



PHASE 1 - PLAN

Gain a good understanding of the place and set a clear objective for your project.



PHASE 2 - DESIGN

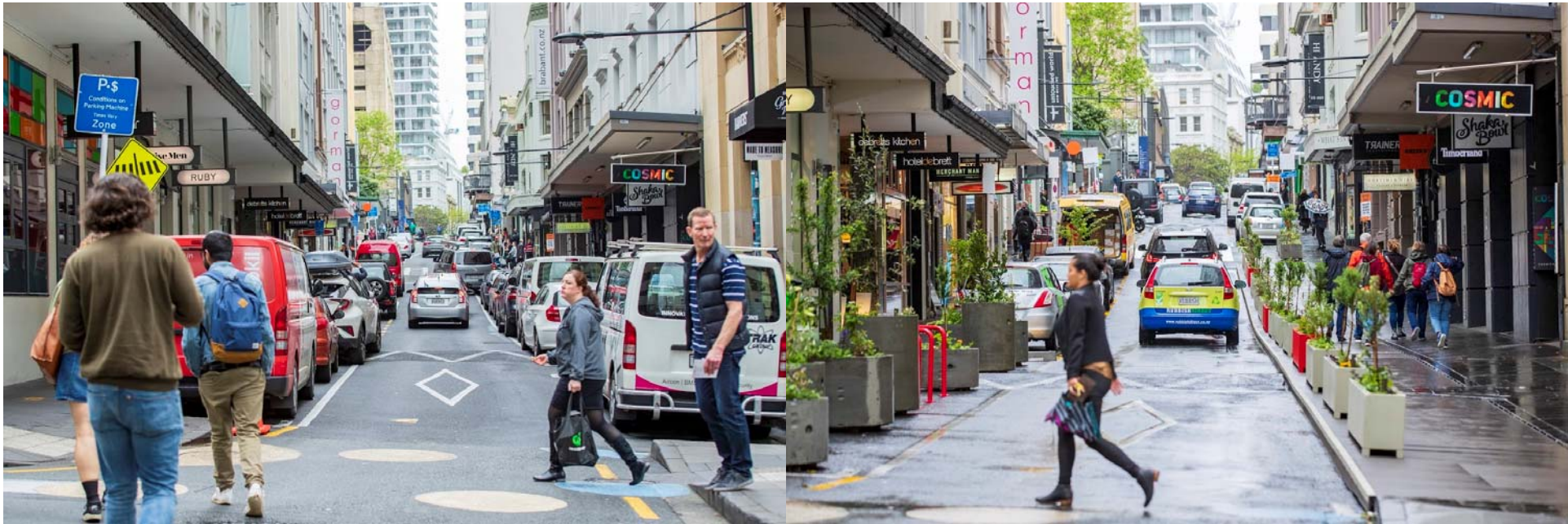
Design the transitional change to deliver your project's objective.













Final thoughts on equity

- Ensure all voices are heard.
- Focus on the system barriers.
- Evaluate the outcomes.



www.nzta.govt.nz/innovatingstreets