



Next Steps: Building  
Nature-based  
Resilience for Transport  
Infrastructure Across  
Aotearoa

Transportation Conference 2026



# Auckland Transport Sustainability Strategy

2024-2031



February 2024



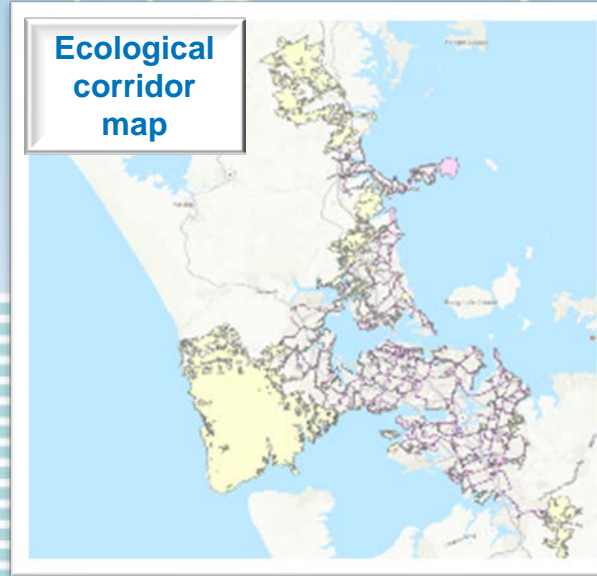
Auckland Transport has the right systems and processes in place to support and deliver its Sustainability Strategy.

- ATs Sustainability Strategy is based on 3 pillars with supporting systems and processes underpinning the delivery
- The Strategy is was approved by the AT Board in May 2024.
- The Strategy is structured around a series of action plans and framework documents which detail the targets and indicators.
- We *tiaki* all those who use our transport system

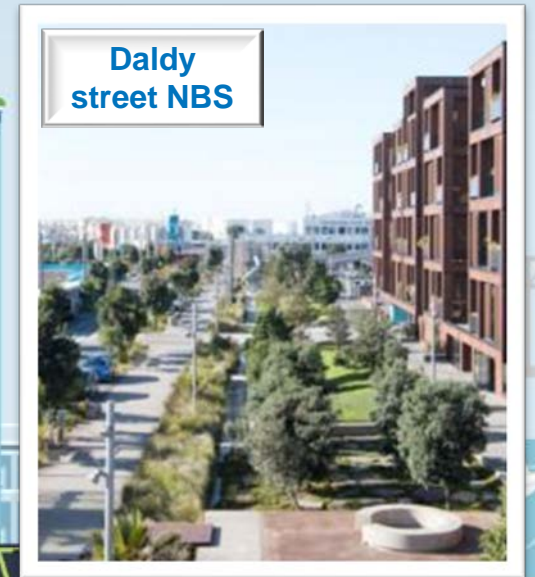


# Key message(s)

- Nature **underpins** our economy.
- Nature, People and Climate are **inherently connected**.



- It begins with a **better understanding**.
- AT **recognises** impact and dependencies on nature.
- Development of **new nature-positive** and **holistic approach**.
- Taking **nature-positive** action is an **investment** not a cost.



## Vision

*"Thinking and living green in Wellington Central City, is the future for the planet and all us."*

## Why

"Urbanisation and climate change call for new solutions to maintain and improve the quality of life in our cities. Public green space has a positive effect on biodiversity, climate, wellness and air quality (Green Cities)."

## Objectives



**TREASURE**  
and protect  
what is  
important



**CELEBRATE**  
the value of  
green with  
partners



**GROW**  
the number  
trees and green  
spaces



**MANAGE**  
what we create and  
what we already  
have well



Measurable actions / programmes of work to deliver on targets & achieve the vision / objectives.



## 10 year Targets



**No net loss**



**Double the  
number of trees  
(to 4000 trees)**

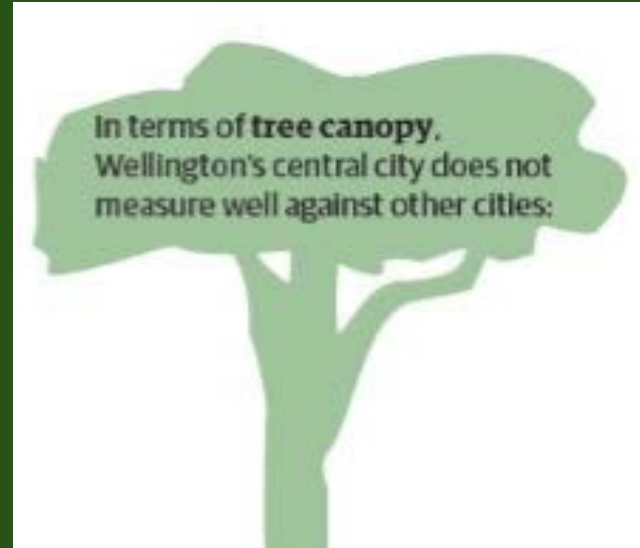


**Improve the greening  
of 20 existing  
urban spaces**



**Deliver 2 new  
urban parks**

*The Green Network Plan sets the direction and targets for how we green Wellington's central city in the next 30 years to take action on the current deficit, provide for growth and to address the climate and ecological emergency declared in 2019.*



City	City Wide	Central City
Wellington	30.6%	5.12%
Auckland	18%	19%
Christchurch	15.6%	17.05%
Sydney	18%	14.5%
Melbourne	16.2%	11%
London	21.9%	18%

## The Benefits

### Tree Tracker

**24/25  
19 trees planted**

**25/26  
94 planned for  
this year**

**Absolutely Positively  
Wellington City Council**

Me Heke Ki Pōneke

# Cuba Street & Garrett Street public space upgrades



4 new street trees on Cuba St, 8 new street trees on  
Garrett St, 50 sqm new rain gardens, 150 sqm garden beds



Before



After

**Absolutely Positively  
Wellington City Council**

Me Heke Ki Pōneke



Before



After



Absolutely Positively  
Wellington City Council  
Me Heke Ki Pōneke

## Ghuznee Street upgrade

7 new street trees with structural cell tree pits, 3 replaced street trees, retention of 6 existing trees, new garden beds and street furniture  
Part of a 'super week' of other infrastructure works



## Mike Pentecost

### Landscape Architecture Lead

Awa Environmental

- Urban Forest – Christchurch City Council
- Motorway Infrastructure Design
- Local Body Street Design
- Nature Based Stormwater Design
- River Restoration

# Resilience and Green Infrastructure

## Green Infrastructure – Helps Create Resilient Cities.

- **Urban Forest**
  - Provides shade to people and grey infrastructure
  - Provides Habitat
  - Intercepts Rainfall
  - Provides Us with Comfort and Mental Wellbeing.
  - Carbon Sequestration
- **Green Stormwater Networks**
  - Slows Surface Water down
  - Creates Ecological Corridors
  - Carbon Sequestration

Helps to Future Proof Our Cities!



# Green Infrastructure – Resilience is Built by People

## Champions

- Landscape Architects
- Ecologists
- Mana Whenua
- Communities
- All of us – everyone working in this space!

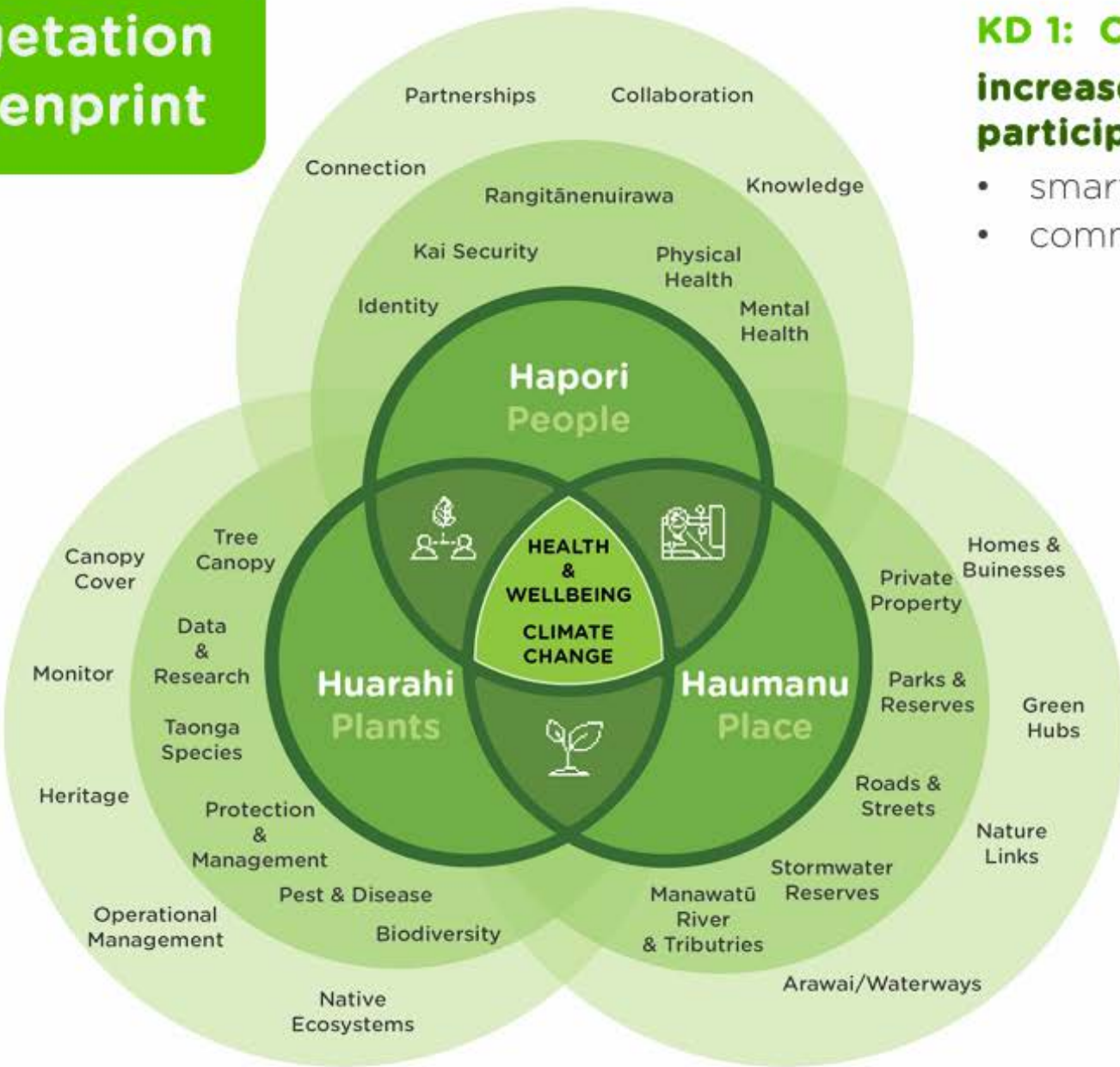
## Big Picture Thinking

- Prioritises Natural Systems
- Understand the Relationships Between Green and Grey Infrastructure
- Create Green Networks

**Green Infrastructure Can Be Our Gift to Future Generations!**



# Vegetation Greenprint



## KD 1: CULTIVATE



**increase knowledge & understanding  
participate, measure, share & learn**

- smarter data, openly share information,
- community collaboration and participation



## KD 2: NURTURE & GROW



**actively plant, nurture and grow city  
vegetation together**

- recognise & prioritise 'green' infrastructure
- co-ordinated, purposeful & equitable
- community connection, action and growth

## KD 3: PROTECT & MANAGE



**vigorously plan, protect & manage our  
collective effort**

- align outcomes, programmes and funding
- succession plan, protect and manage
- maximise the benefits!



PALMY®  
PALMYDA  
PALMERSTON  
NORTH  
CITY





PAPAIOEA  
PAPERSTON  
NORTH  
CITY

# PALMY

