

Transportation Group NZ Conference 2019

Talking change; managing the conversation

Mark Ames

hello@strategic-cities.com

 [@StrategicCities](https://twitter.com/StrategicCities)



80

CSO

CSO

CSO

Church claims west London cycle superhighway 'will do more damage than the Luftwaffe'



Cycle lane lunacy!

The new blight paralysing Britain

SEE PAGE 16



They've got cycle lanes galore. But now they're on pavements and jumping lights — and mowing down pedestrians. One aggrieved writer pleads...

Is anywhere safe from the Lycera louts?



by Brendan O'Neill

Are police turning a blind eye to bad cyclists? Fines fall by two thirds despite surge in popularity

London in the era of biking supremacists.

DOMINIC LAWSON: The depressing real reason police have stopped cracking down on aggressive morons on bikes

News > Transport

Drivers call for reversal of mini-Holland scheme run by 'cycling Taliban'

The background consists of several rolled-up newspapers, creating a sense of depth and media. The text on the newspapers is partially visible and includes words like 'D', 'M', 'MA', 'live', 'revealed', 'out have', 'ried about', 'diagnosis', 'study visit', 'further inform', 'che', 'testosterone', 'problems', 'me', 'diagnosis', 'problems', 'me', 'diagnosis', 'problems', 'me'.

Taxi leader says cyclists are the
“ISIS of London”







Chronically delayed Berlin airport plans expansion

8 MAY, 2018 • BY FIONA MCINTYRE



Save Bondi Beach



SAVE BONDI BEACH

March 1998 Save Bondi Beach Incorporated. Locked Bag 7000, Bondi Beach NSW 2026. Telephone Message Service 9300 8111

Rail Proposal is a disaster for Bondi Community



WAVERLEY LIBRARY
LOCAL STUDIES
COLLECTION

Battle of Bondi gets dirty

Diesel spilled into water







“Any time you take on the status quo...
..it's going to be a fight,
and the status quo is going
to push back hard.”

Janette Sadik-Khan

New York City

Transportation Commissioner

BIKE LANE =
FEWER

THE BIKE LANE =
TRAFFIC CONGESTION
and
DANGER!

TIME TRAFFIC LIGHTS
TO CALM TRAFFIC!
DONT
CONSTRICT
PPW!

THE 'NEW' PPW
ALL RISK
NO REWARD

D.O.T.
DOESN'T CARE

ABOUT ME!

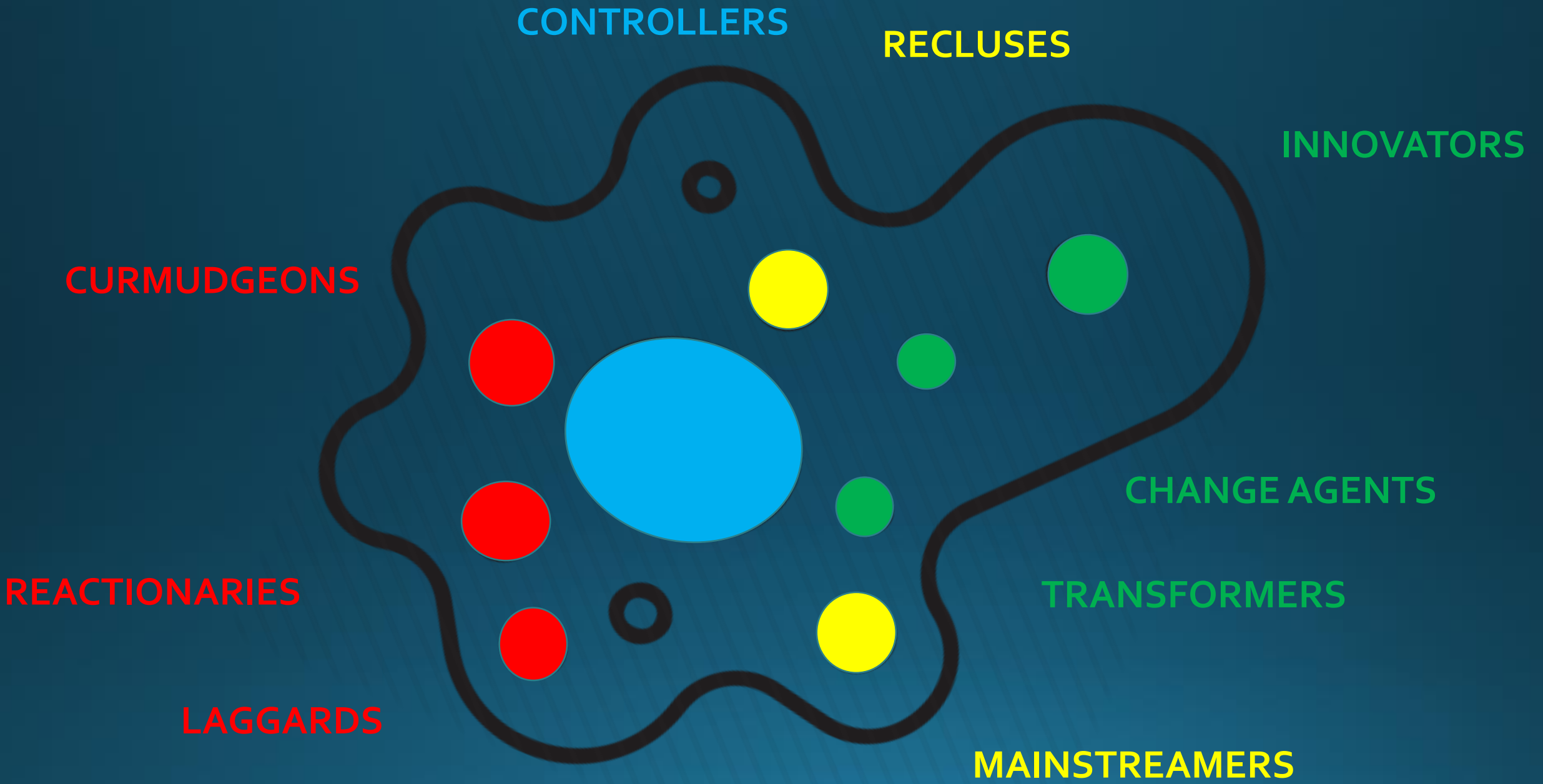
CHANGING
OUR LANES
IS
RISKING
OUR LIVES!

R

POLICE LINE DO NOT CROSS
POLICE DEPT

“Individuals go along with current interaction arrangements for a wide variety of reasons, and **one cannot read from their apparent tacit support of an arrangement that they would, for example, resent or resist change.** Very often behind community and consensus are mixed motive games.”

Erving Goffman,
“The Interaction Order” 1982





DON'T GET OLD
ILL OR HAVE A FIRE
NO ONE CAN
GET TO YOU



'Mini Holland' scheme in Walthamstow hailed as major success as traffic falls by half

ROSS LYDALL | Tuesday 8 November 2016

   **3K** shares




News > London

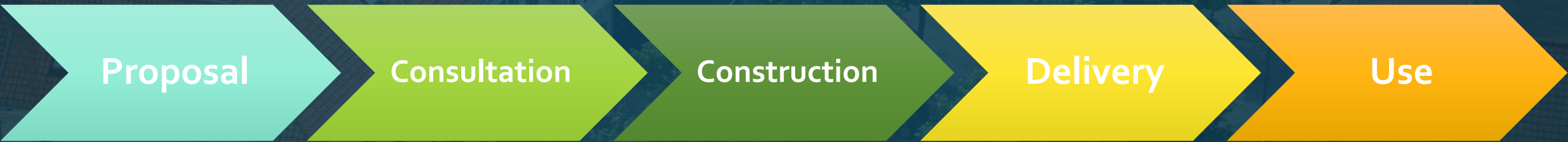
Children will live longer thanks to Waltham Forest's 'Mini Holland' cycle scheme

ROSS LYDALL | Friday 3 August 2018 11:56 |  7 comments

 Like [Click to follow The Evening Standard](#)





Proposal

Consultation

Construction

Delivery

Use

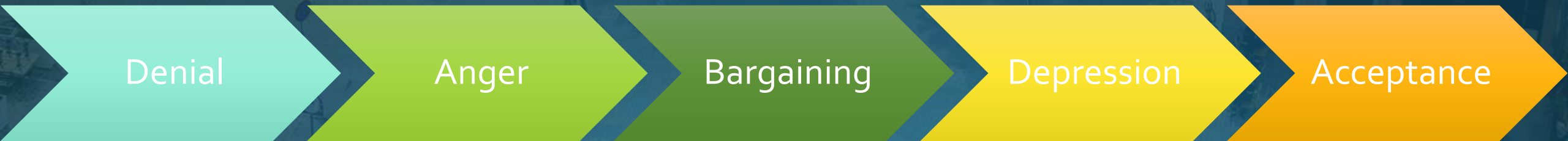
“WTF!?”

“Absolutely NOT!”

“Put it somewhere else!”

“This is awful but so is everything else.”

“That will do.”



Denial

Anger

Bargaining

Depression

Acceptance

Public consultation shows support for controversial CS9 in London

News > Transport

Overwhelming support for giving up more road space to cyclists, poll reveals, as Londoners back cycle superhighway scheme

Sydney cyclists support proposed 300km bike network

ABC Radio Sydney By Luke Wong

Updated 4 Apr 2018, 8:09am

Bike Life report: 77% of residents want more protected cycle routes

14 Nov 2017, 11:43

NEW ZEALAND

Survey: Most Aucklanders now support cycling

18 Jun, 2018 5:00am

🕒 4 minutes to read



Transportation Group NZ Conference 2019

Talking change; managing the conversation

1. Follow the five Ws
2. Enable positive voices
3. Expand the benefits
4. Value engagement

1. Follow the five Ws

What will happen?

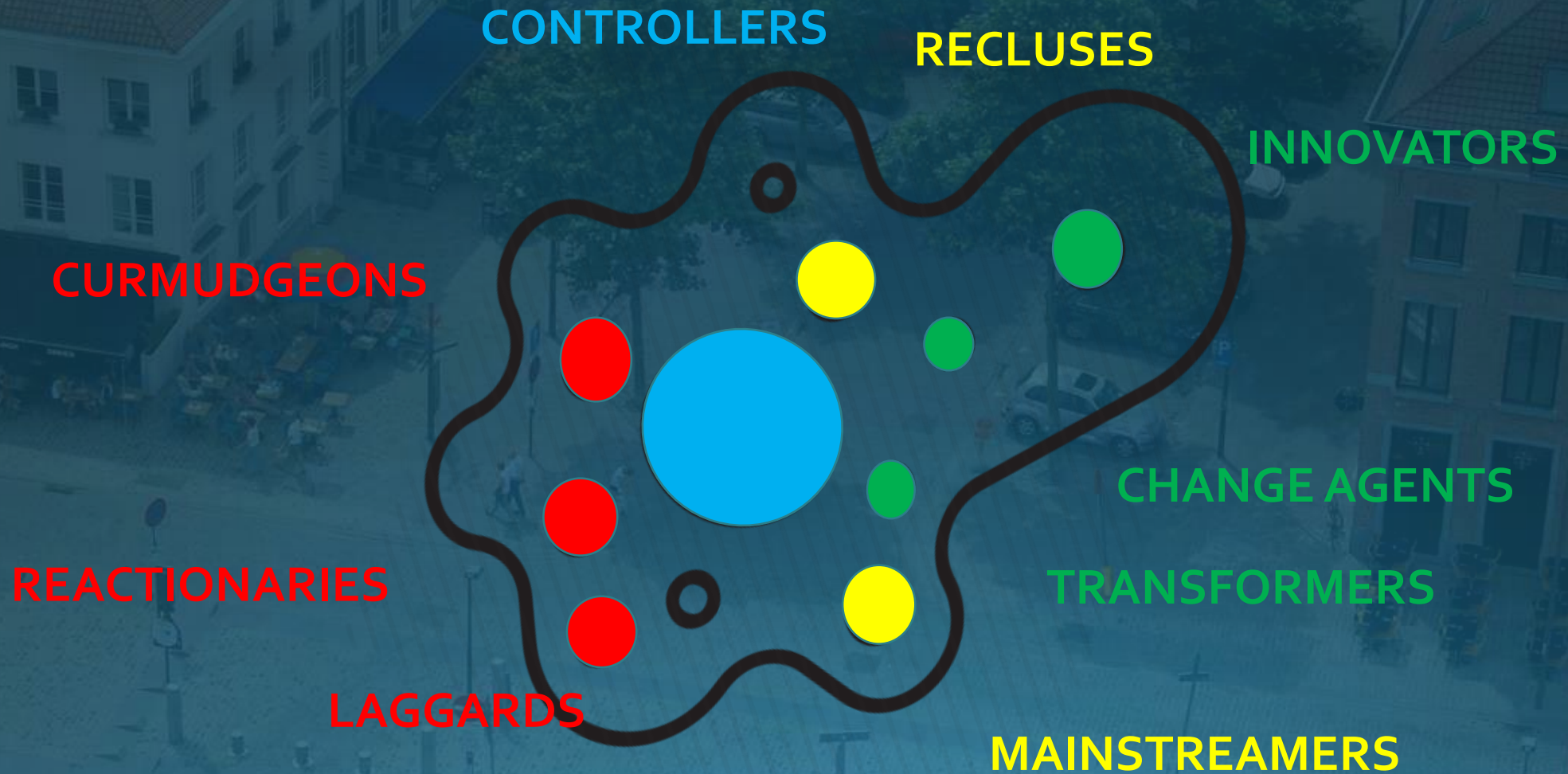
When?

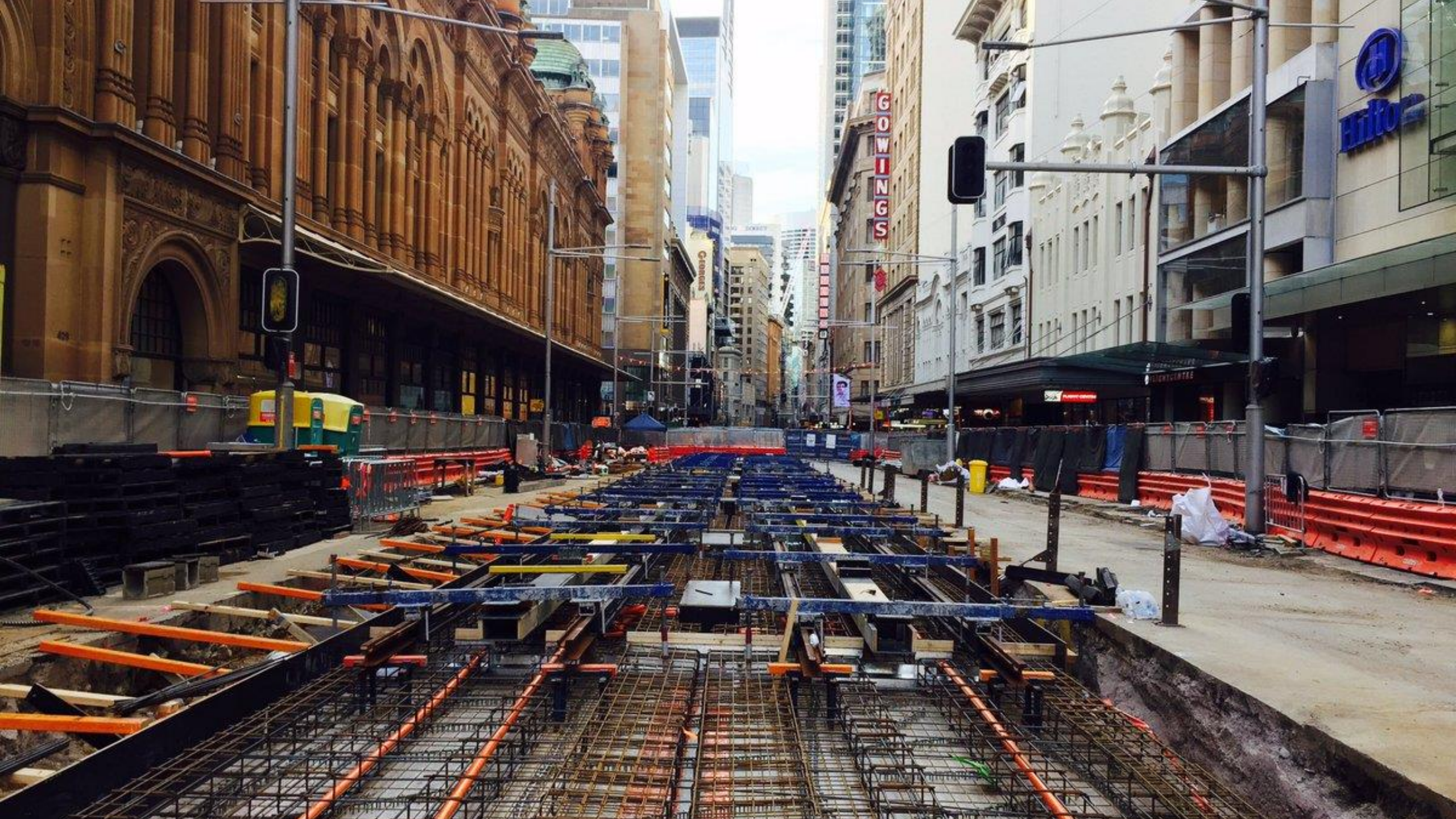
Who will be involved / impacted?

Where will it change?

Why is this change necessary?

2. Enable positive voices







Liked

Following

Share

...

Send Message



Sydney Light Rail

15 August at 08:26

Nearly 2800m of track has now been laid in Surry Hills and work to underground powerlines is complete. Crews will soon start excavation work for new smartpole footings before turning their attention to kerbs and footpaths. In the coming months, the Central Chalmers St and Surry Hills light rail stops will start to take shape as crews begin installing steel structures and canopies, whilst work continues on paving.

Ask Sydney Light Rail

Type a question...



ABOUT SYDNEY LIGHT RAIL

Our Story

The CBD and South East Light Rail will link Circular Quay and Central, the Moore Park sporting and e...

See more

Community

See all

Invite your friends to like this Page

29,855 people like this

30,479 people follow this

Sydney Light Rail

@SydneyLightRailProject

Home

About

Posts

Photos

Videos

Notes

Events

Community

Info and ads

Create a Page





Sydney Light Rail
NSW Page Liked · 22 December 2018 · 🌐

👍 9 💬 3 comments

👍 Like 💬 Comment ➦ Share 🌐

Most relevant ▾

 **Kim Marsh** it is going to be hard for traffic with 2 new rail crossings plus a perstran crossing .they should have bit the bullet and had a tunnel under the road to take it all to the race course side in one go.
Like · Reply · 2w

 **Kingston Jain** back in 2008 i managed to grab a piece that was laying on the ground at moore park, a very rusty flat piece with four holes in it
Like · Reply · 9w

 **Greg Hills** I found guard rail before the team moved in 🙌 & tram track half buried wish I got that 🙄

 Write a comment... 🗨️



3. Expand the benefits



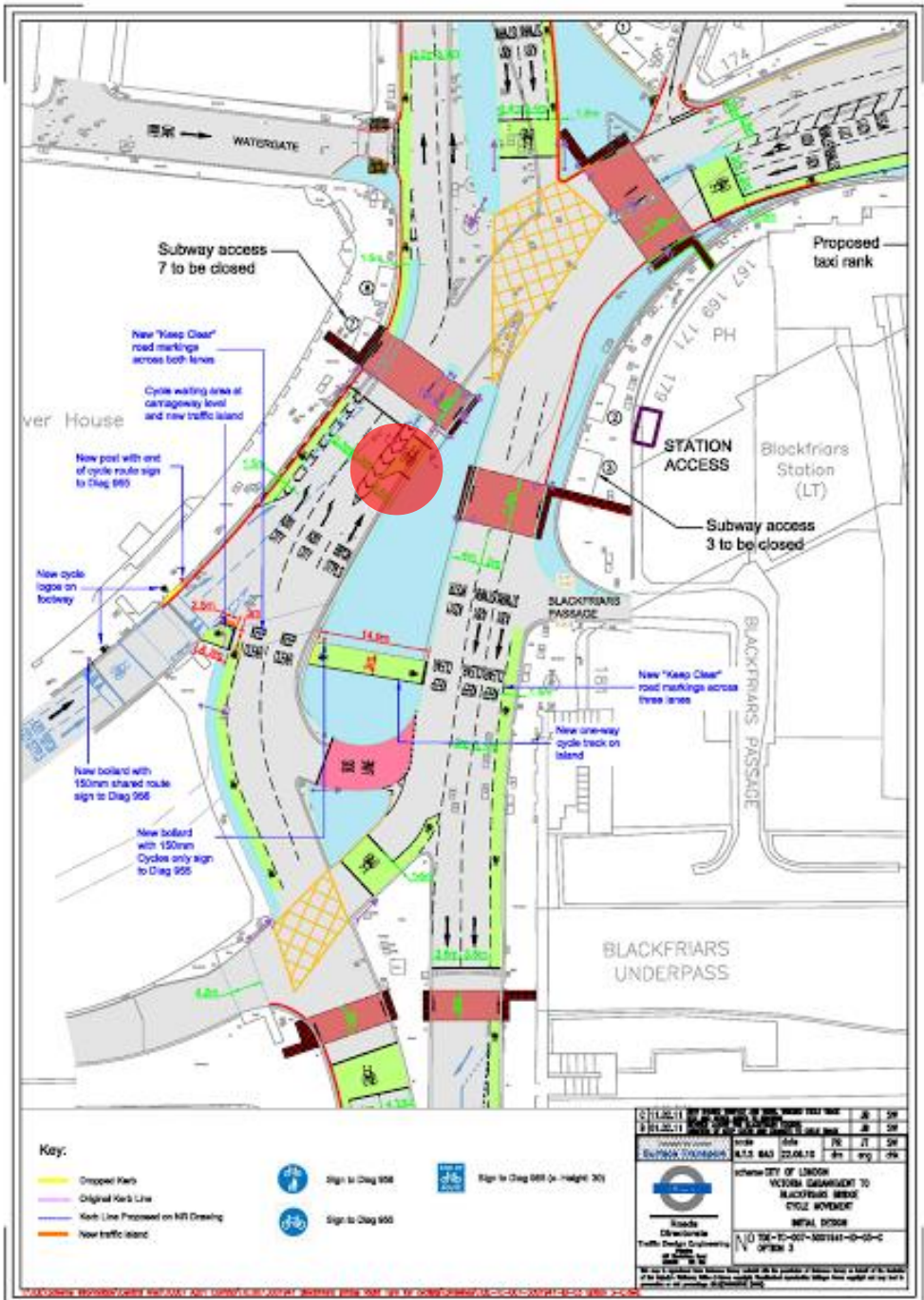




[schlijper.nl](https://www.schlijper.nl)
today

4. Value engagement













Space for Cycling
LONDON CYCLING CAMPAIGN





Transportation Group NZ Conference 2019

Talking change; managing the conversation

1. Follow the fiveWs
2. Enable positive voices
3. Expand the benefits
4. Value engagement

“There will always be a very vocal, very loud, minority of people who *genuinely, passionately* believe that their lives are going to be ruined because they have to **wait 10 minutes in traffic**”



Andrew Gilligan

Mayor of London's Cycling Commissioner



Thank you

hello@strategic-cities.com

 [@StrategicCities](https://twitter.com/StrategicCities)

