

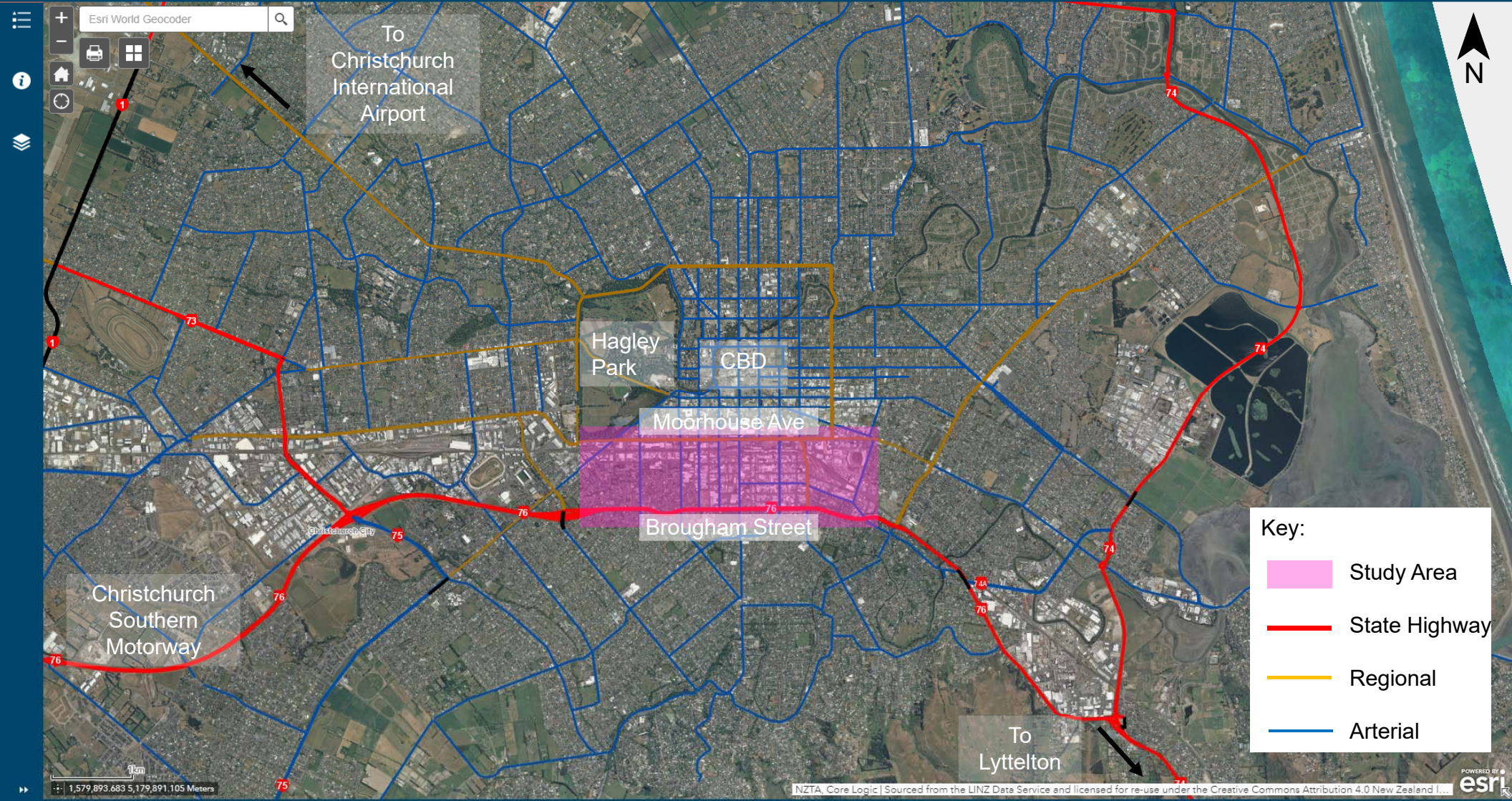
Equity in Engagement: A Case Study of the Brougham-Moorhouse Area of Christchurch

Presenters

Bryce Carter, Beca
Greg Edwards, Beca

What is equity in engagement?

- Authentic
- Reach – inclusive processes that engage with all communities
- Outcomes – solutions that balance the needs of many different communities



Key:

- Study Area
- State Highway
- Regional
- Arterial

Moorhouse Avenue



Brougham Street



Colombo Street



Antigua Street



Community Engagement

Engage "listen and learn"

Respond "this is what we heard"

"This is what we are thinking, what are your thoughts?"

*Draft Preferred Option
"Have we got it right?"*



**Come and share
your ideas and find
out more at one of our
community drop-in sessions.**

Look out for our pop-up sites:

Thursday, 6 December

The Colombo
363 Colombo Street, Sydenham
9:00am – 11:00am

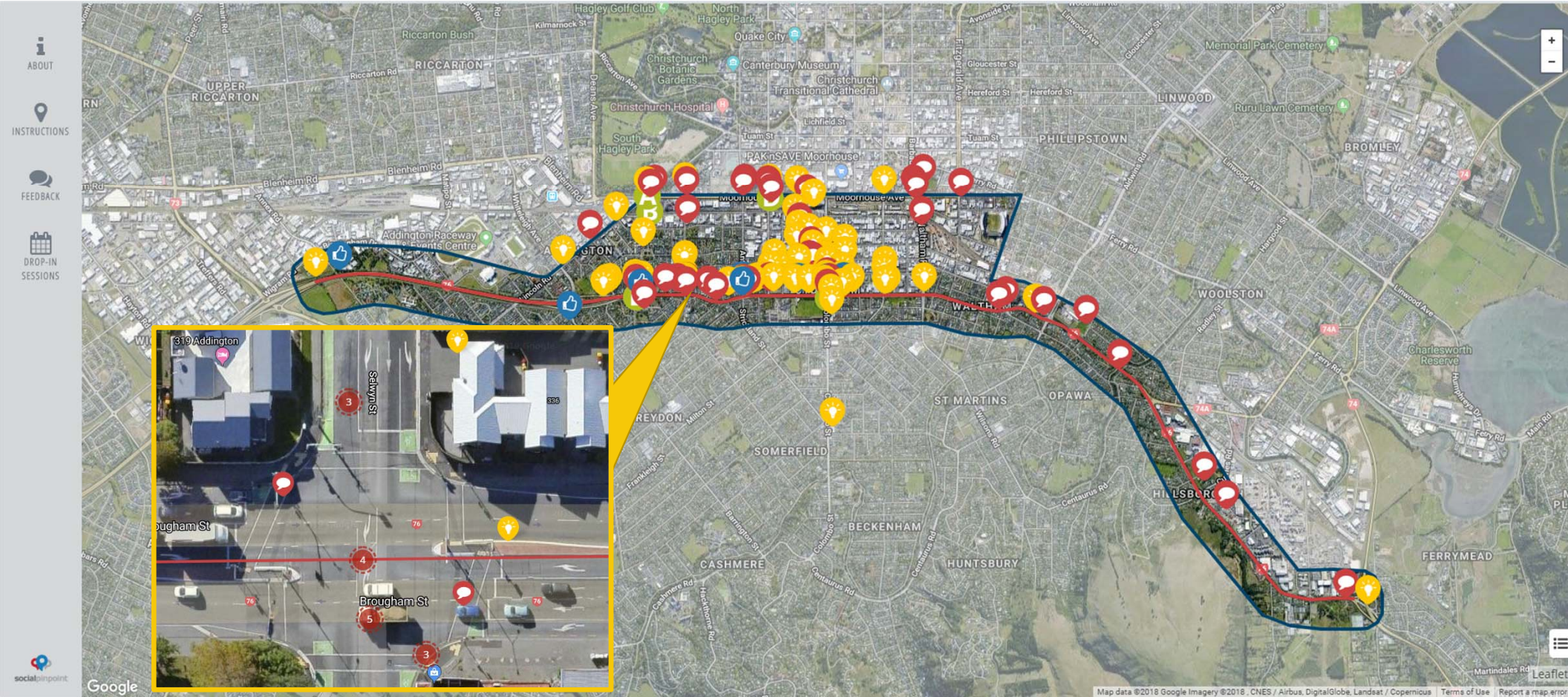
Thursday, 6 December

Outside the Christchurch Bus Interchange
Corner of Lichfield Street and Colombo Street
Christchurch Central
4:00pm to 6:00pm

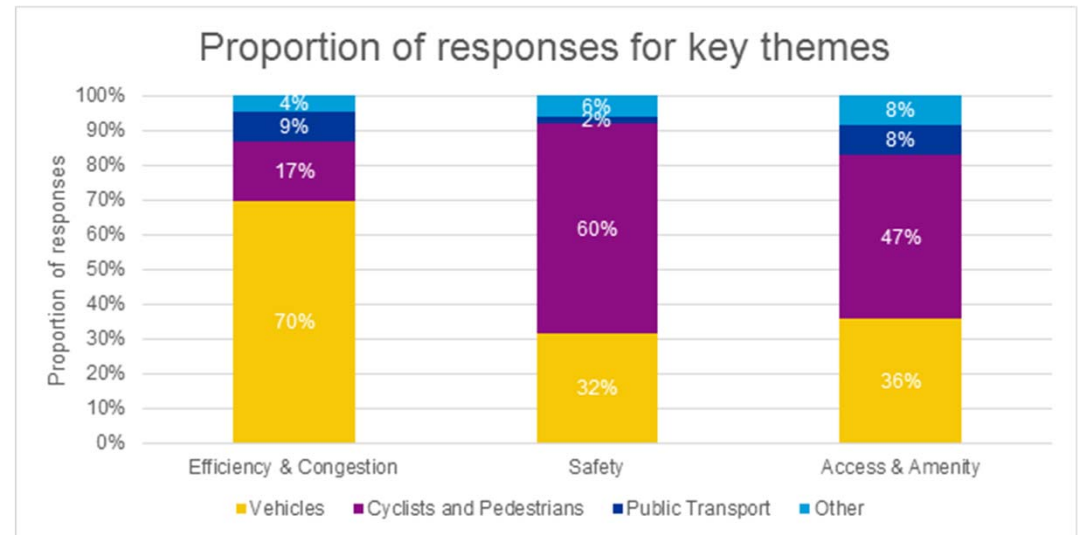
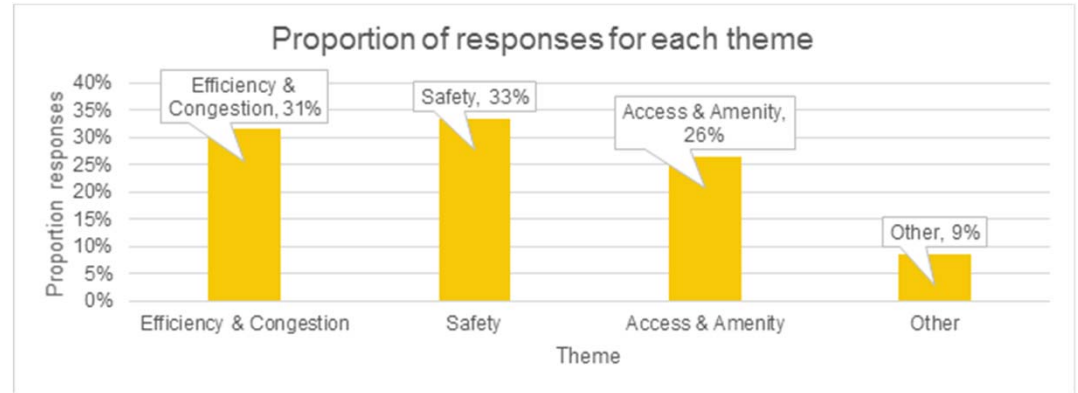
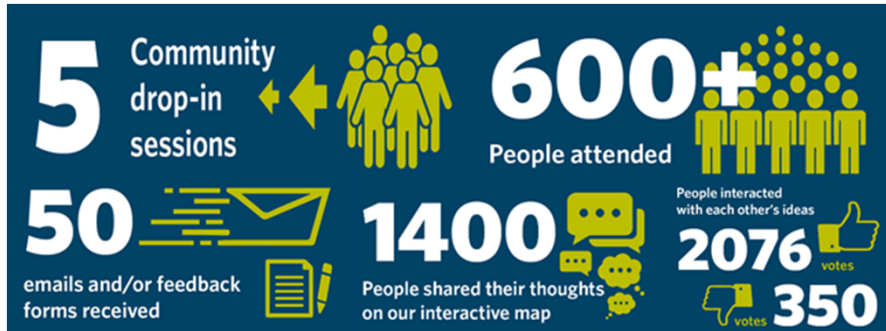
Friday, 7 December

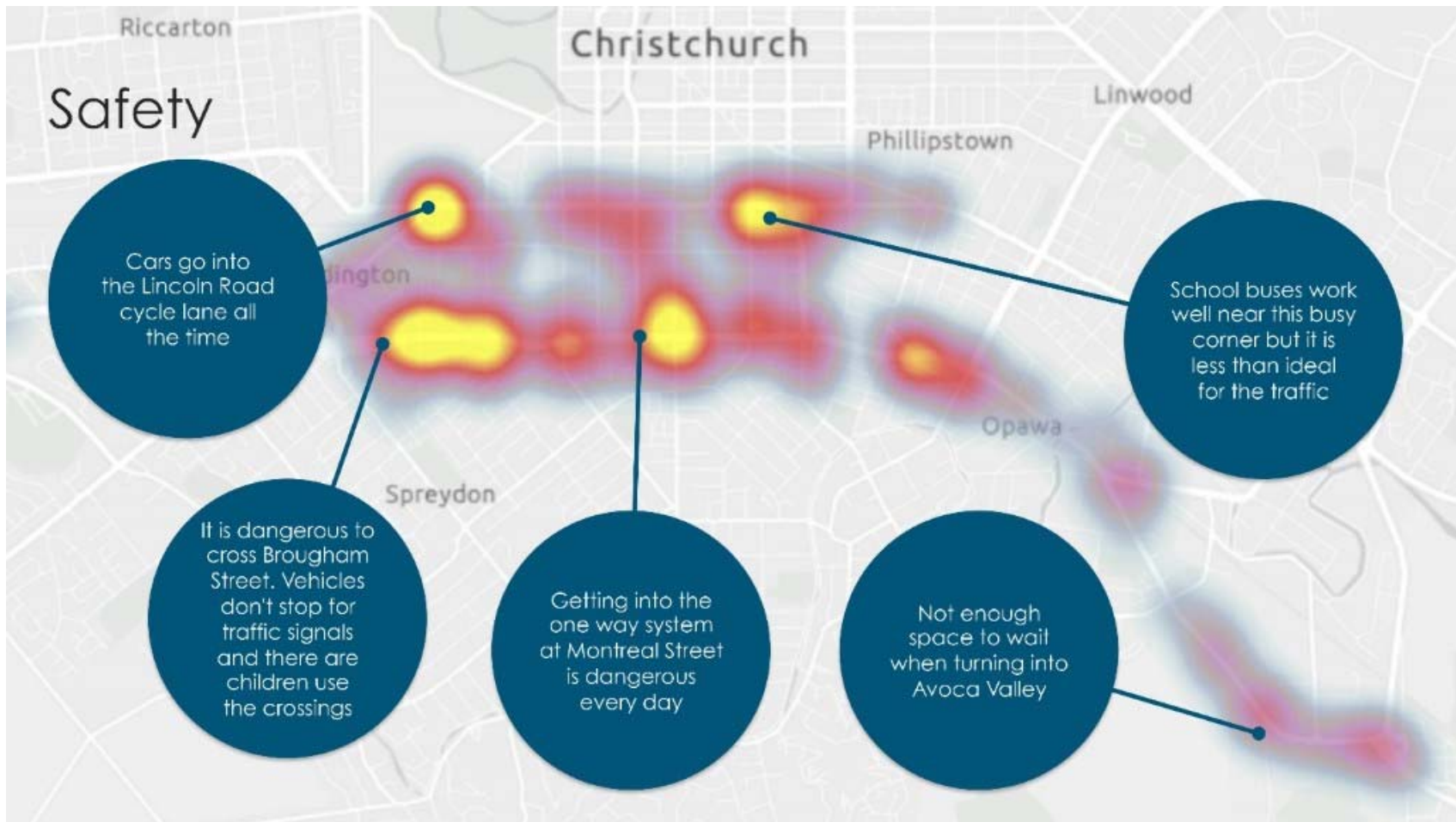
Hagley Park South
Corner Moorhouse Avenue and Hagley Avenue
4:00pm to 6:00pm

Community Engagement - Social Pinpoint



Engagement Statistics





Access & Amenity

It's easier for pedestrians to cross the full distance with cyclists

The residential streets off Selwyn Street need traffic calming

Brougham Street needs cycle lanes, there are no good east-west alternative routes on quieter streets

Road noise is loudest at night when traffic flows are low & speeds higher

Pedestrians wait two cycles to cross Brougham Street at the traffic signals

It would be nice to separate Brougham and Colombo Street. Overpass/underpass?

Efficiency & Congestion

There are important connections for oversized loads to/from SH76 to the CBD area

Collins St crossing needs to be an underpass/overpass. It will only get worse when the Southern Motorway is finished

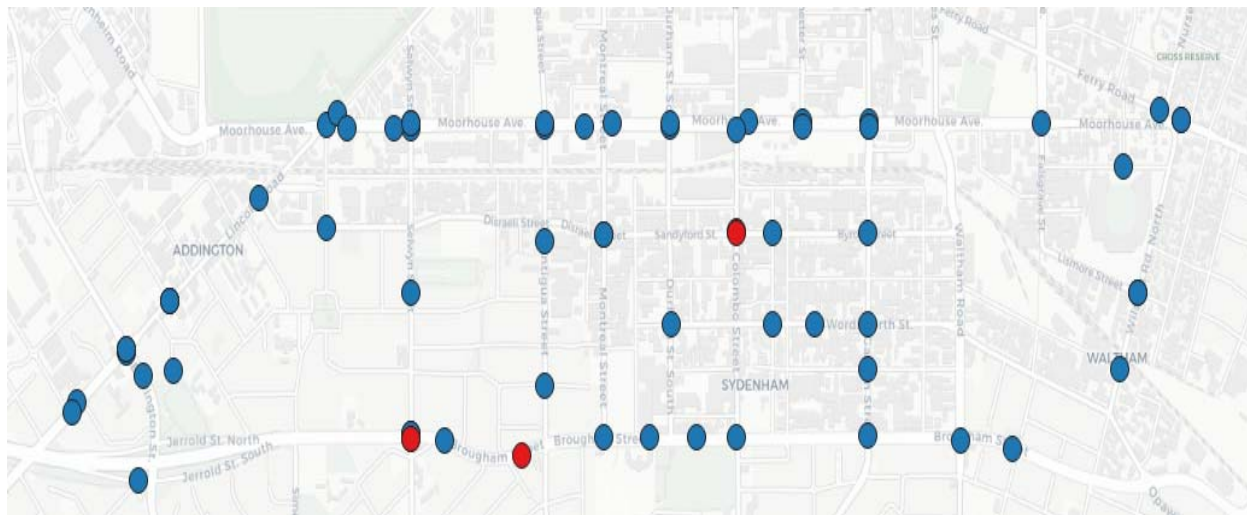
Remove parking and cycle lane in order to make three lanes each direction from Barrington St to Ensors Rd

Priority should be given to busses on Colombo Street, particularly at signals

Synchronise the traffic lights and there will be less problems

Did we achieve our goal?

- Lots of data
- How representative is the information?



Fatal (red dot) and Serious (blue dot) Crashes in the Brougham-Moorhouse Area (2014-2018)

Figure 2: Annual population growth rates

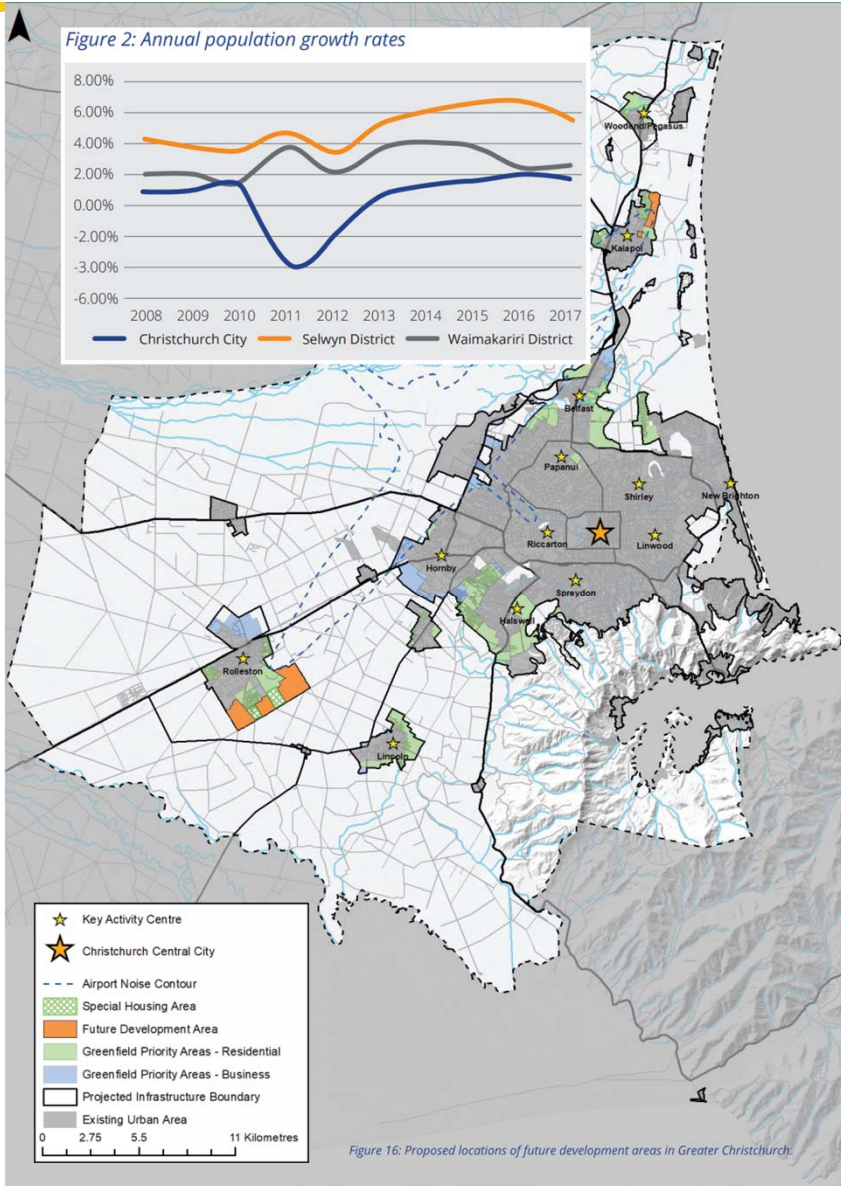
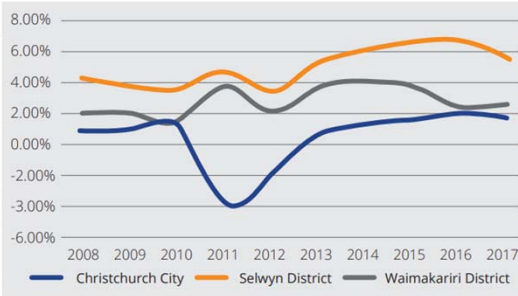
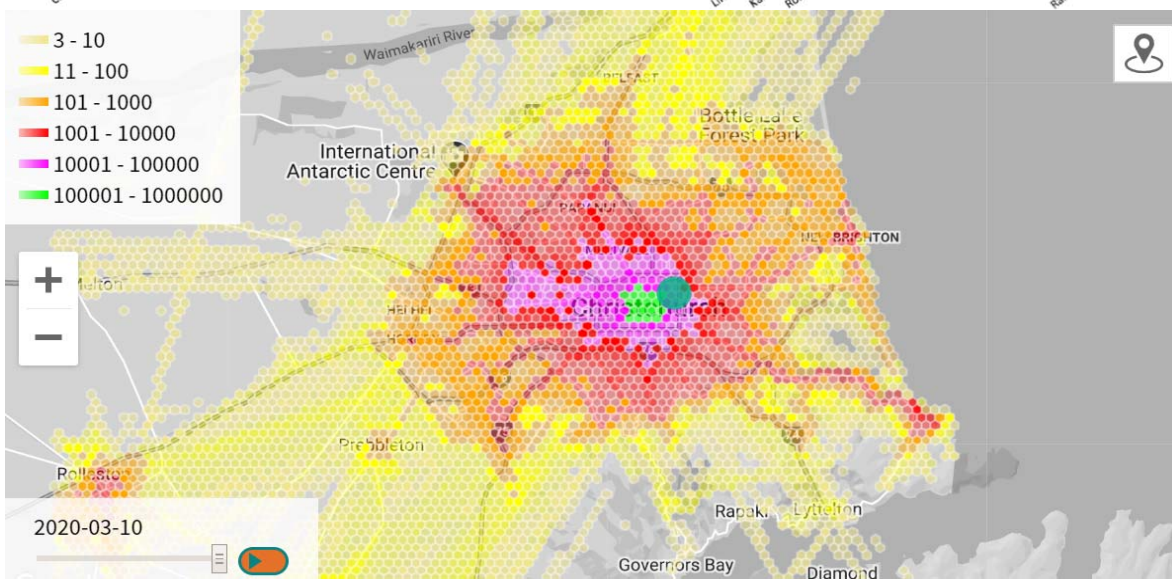
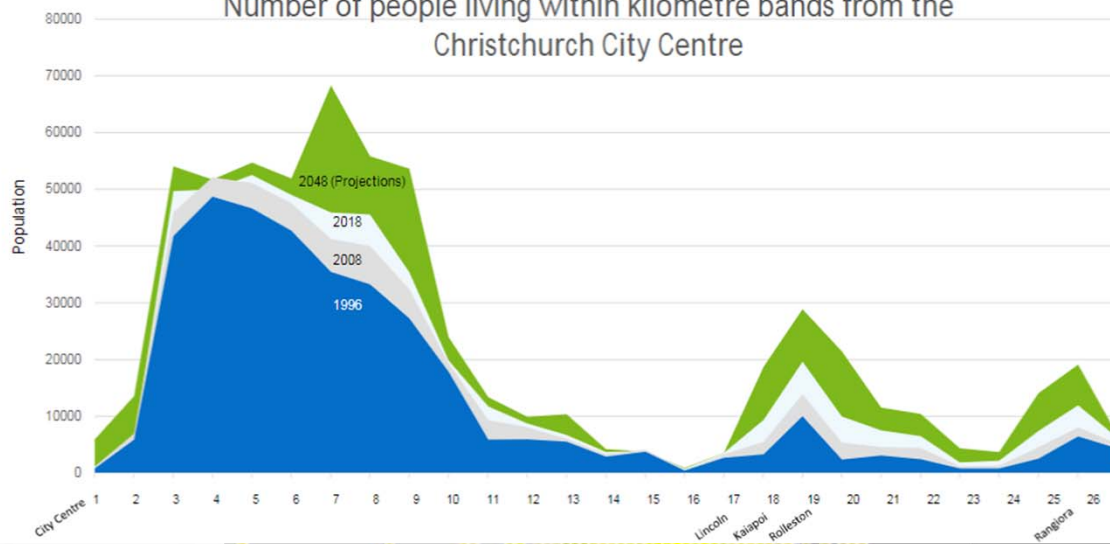
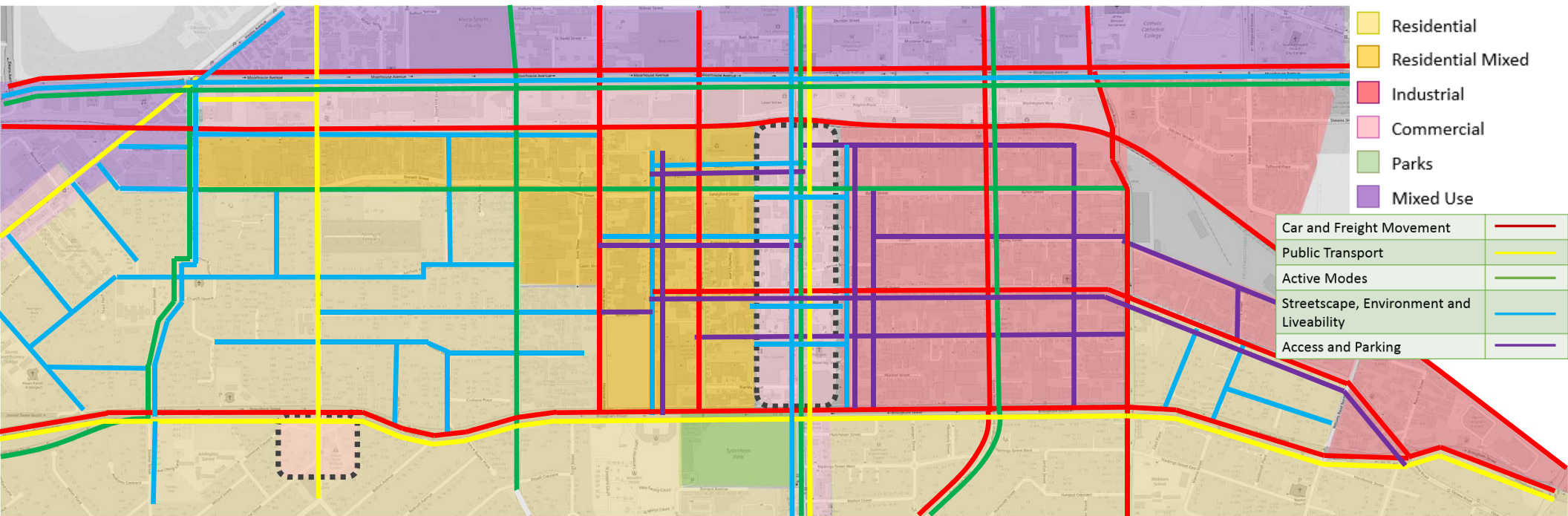


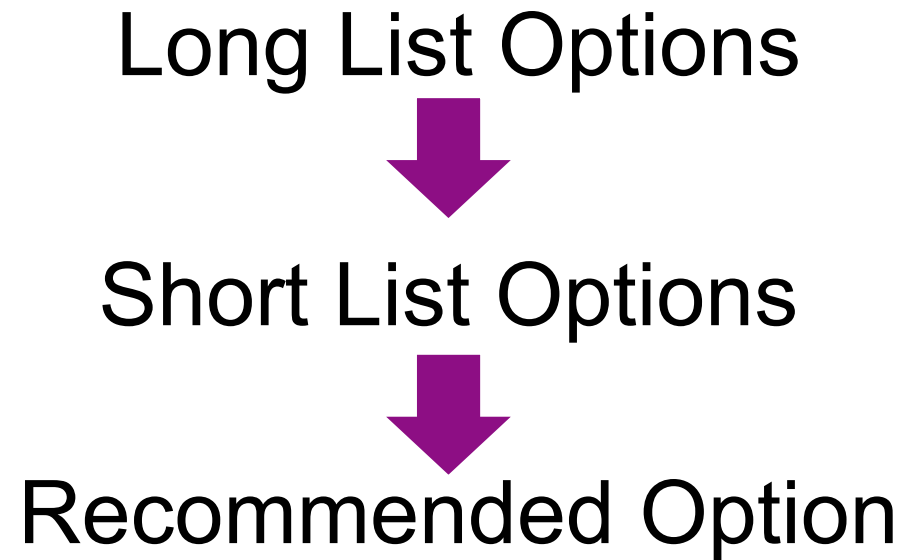
Figure 16: Proposed locations of future development areas in Greater Christchurch.

Number of people living within kilometre bands from the Christchurch City Centre



Movement & Place Framework





Next Steps



Technical assessment of the recommended option



Engage with the public, community and stakeholders on the way forward



**make
everyday
better.**