

Applying Healthy Streets



Tracy Fleming

12 March 2020

**Insightful solutions.
Empowering advice.**

Why healthy streets?

Independence

Choice



Access

Safety



Freedom

Health

What is a healthy street?



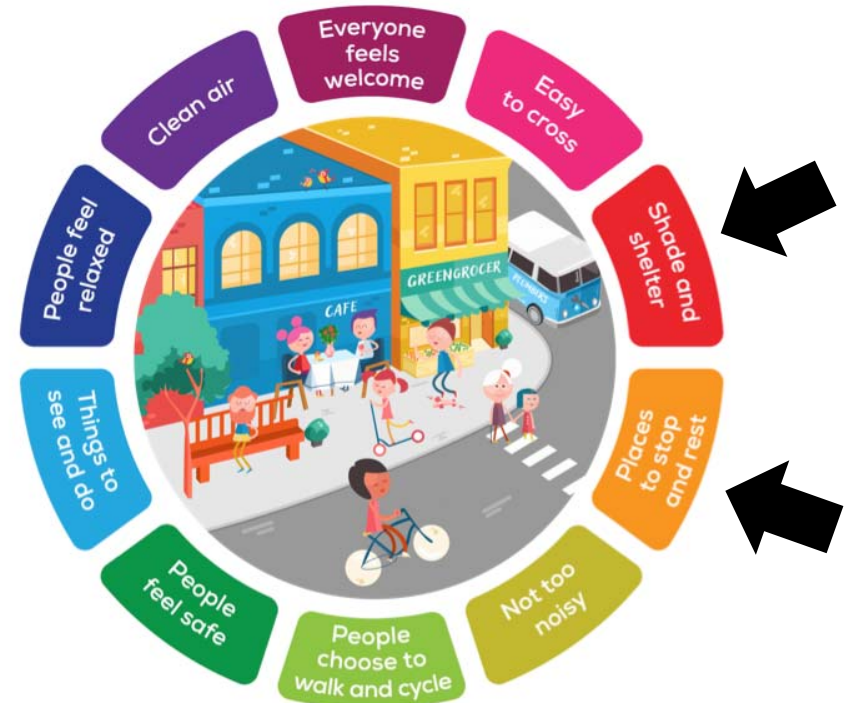
Healthy Streets in London



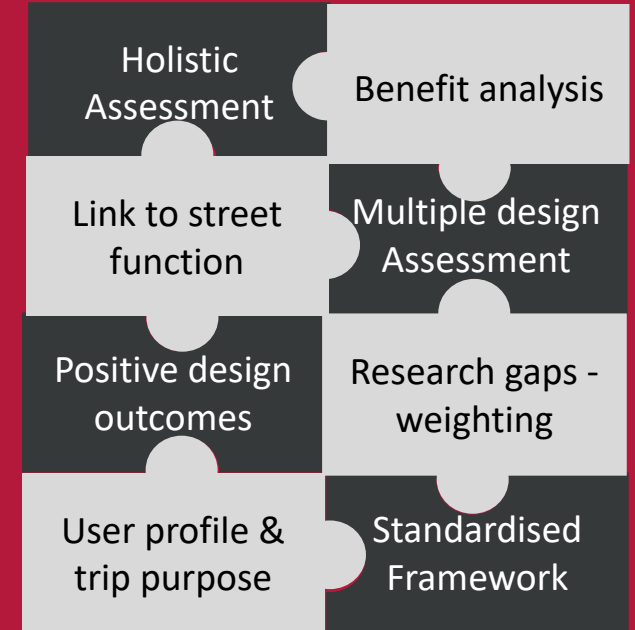
<https://tfl.gov.uk/corporate/about-tfl/how-we-work/planning-for-the-future/healthy-streets>

<http://landor.co.uk/healthystreets/2019/home.php>

Healthy streets audits / March 2020

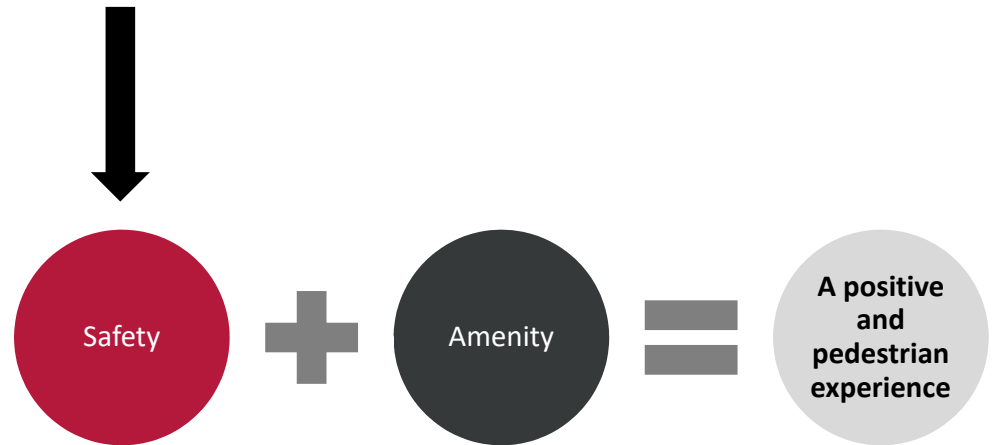


Source: Lucy Saunders



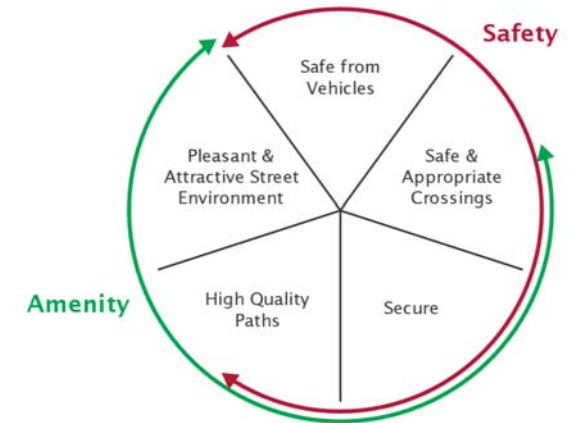
Pedestrian Level of Service Research

- NZ focused research
- Qualitative user surveys
- Practitioner testing
- Development of framework
- 0 to 4 scoring system



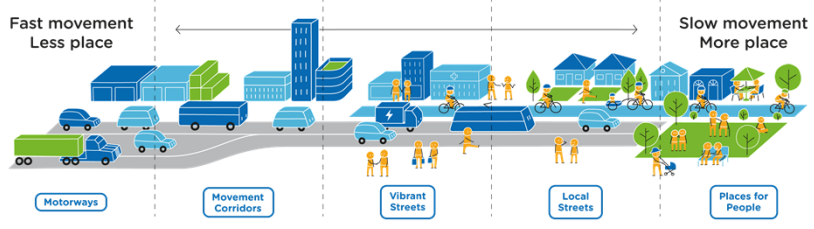
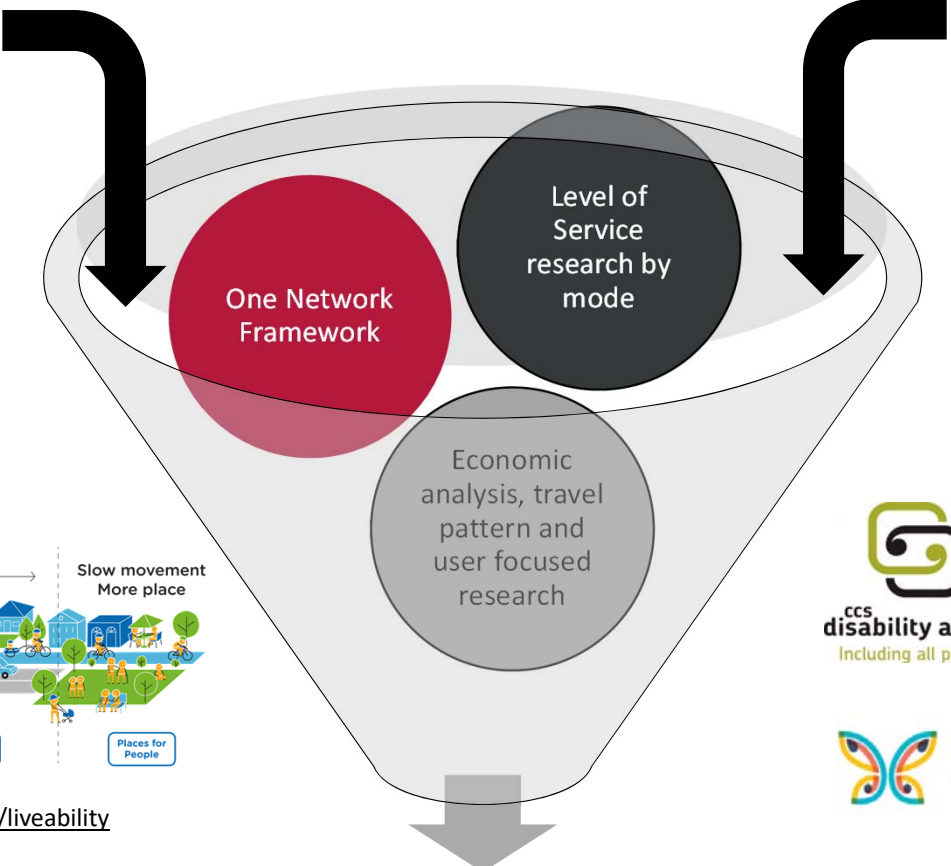
Pedestrian Level of Service Research

Footpath width	Surface quality	Gradient
Crossfall	Separation from moving traffic	Traffic volume
Heavy vehicle volume	Traffic speed	Crossing the street – frequency and type
Crossing the street – quality	Crossing side streets – frequency and type	Crossing side streets – quality
Vehicle accessways	Mix of path users	Surveillance
Lighting	Greenery	Comfort features
Engaging surroundings		



COMMUNITY STREET REVIEW 04 of 05
Characteristics Guide

	Very Bad	Bad	Slightly Bad	Neutral	Slightly Good	Good	Very Good
Path Length							
Safe from traffic "I feel safe from road vehicle danger"		I felt very unsafe in this environment, I was fortunate not to be injured by traffic.		I felt neither safe or unsafe.		I felt very safe in this environment, I did not feel at risk of injury from traffic.	
Safe from falling "I feel safe from trips, slips, and falls"		I felt very unsafe in this environment, I felt I was lucky not to be injured from falling.		I felt neither safe or unsafe.		I felt very safe in this environment, I did not feel at risk of injury from falling.	



<https://www.greater.sydney/metropolis-of-three-cities/liveability>



Healthy Streets NZ?

Thank you!

Questions?

Contact

Tracy Fleming

Senior Transportation Engineer

tracy.fleming@abley.com

Tel: 022 646 8005



Pedestrian Level of Service Research

Ann-Marie Head

Associate Transportation

Ann-marie.head@abley.com

Tel: 022 683 1004

