

# GREAT JOURNEYS TO KEEP NEW ZEALAND MOVING

# Government Direction

## Government Policy Statement on Land Transport

2018/19  
2027/28

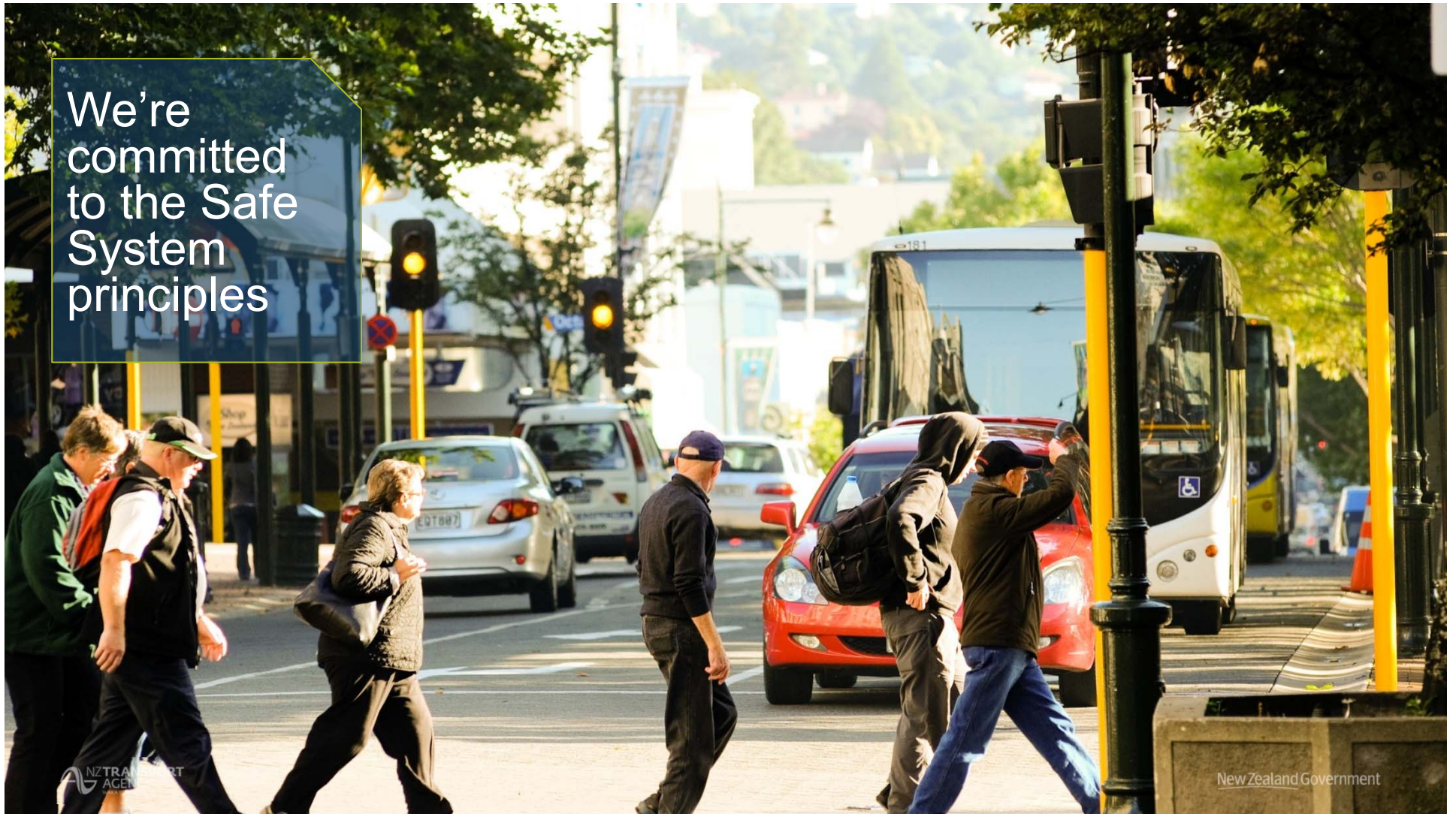
Road  
Safety  
Performance



It's time to  
turn things  
around



We're committed to the Safe System principles



# Reducing Injury Severity



Refresh of  
Safer  
Journeys



# Safer Journeys

A photograph of a family of three smiling from the back of a car. In the foreground, a young girl with short brown hair and a pink polka-dot top is looking towards the camera. Behind her, another young girl is smiling. To the right, a man with glasses and a white shirt is also smiling. The car's interior and window frame are visible. The background shows green foliage and bright sunlight, creating a warm, happy atmosphere.

National  
Land  
Transport  
Programme  
2018-21



# Safe Network Programme

# National Priority Programmes



# Safe Roads and Roadsides



# Safe Walking and Cycling



Safe  
Speeds

Less speed  
Less harm

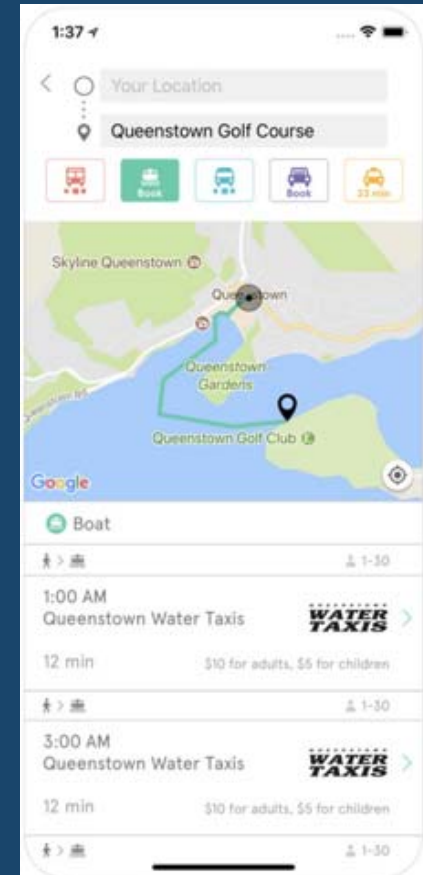
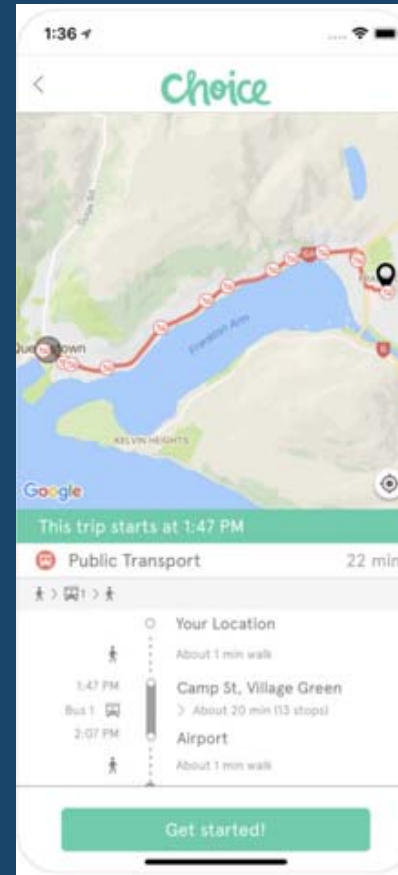
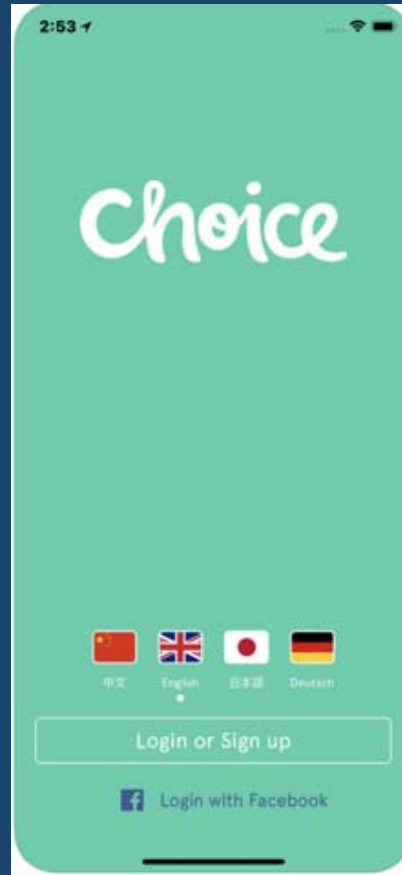
Safe  
People



# Safe Vehicles



# Mobility as a service





# Regulatory Review



# Sustainability Strategy



**GREAT JOURNEYS  
TO KEEP  
NEW ZEALAND  
MOVING**

**Thank you**

