



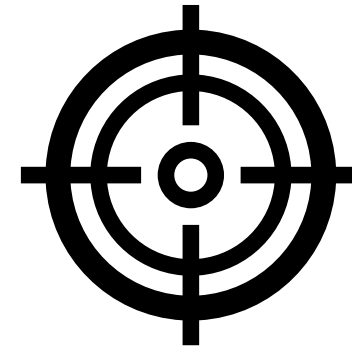
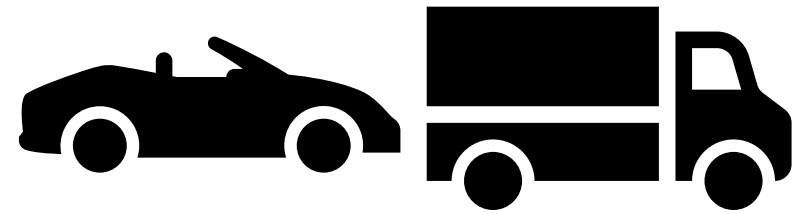
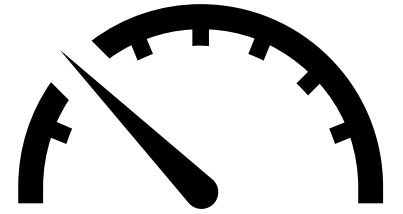
Driving insights

→ Unlocking network insights with connected vehicle data

Becky Young & Andrew Metge



What does it collect?

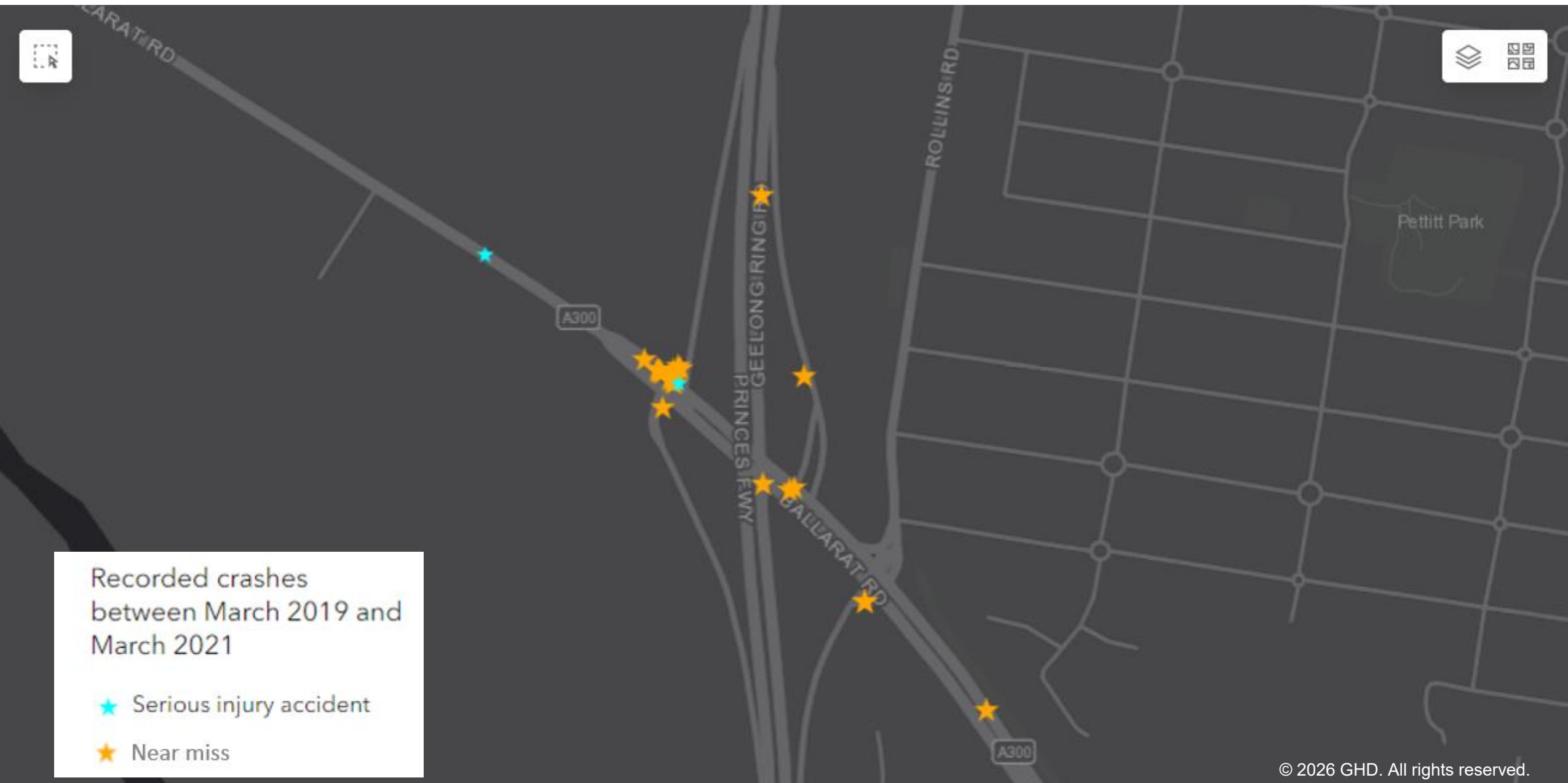




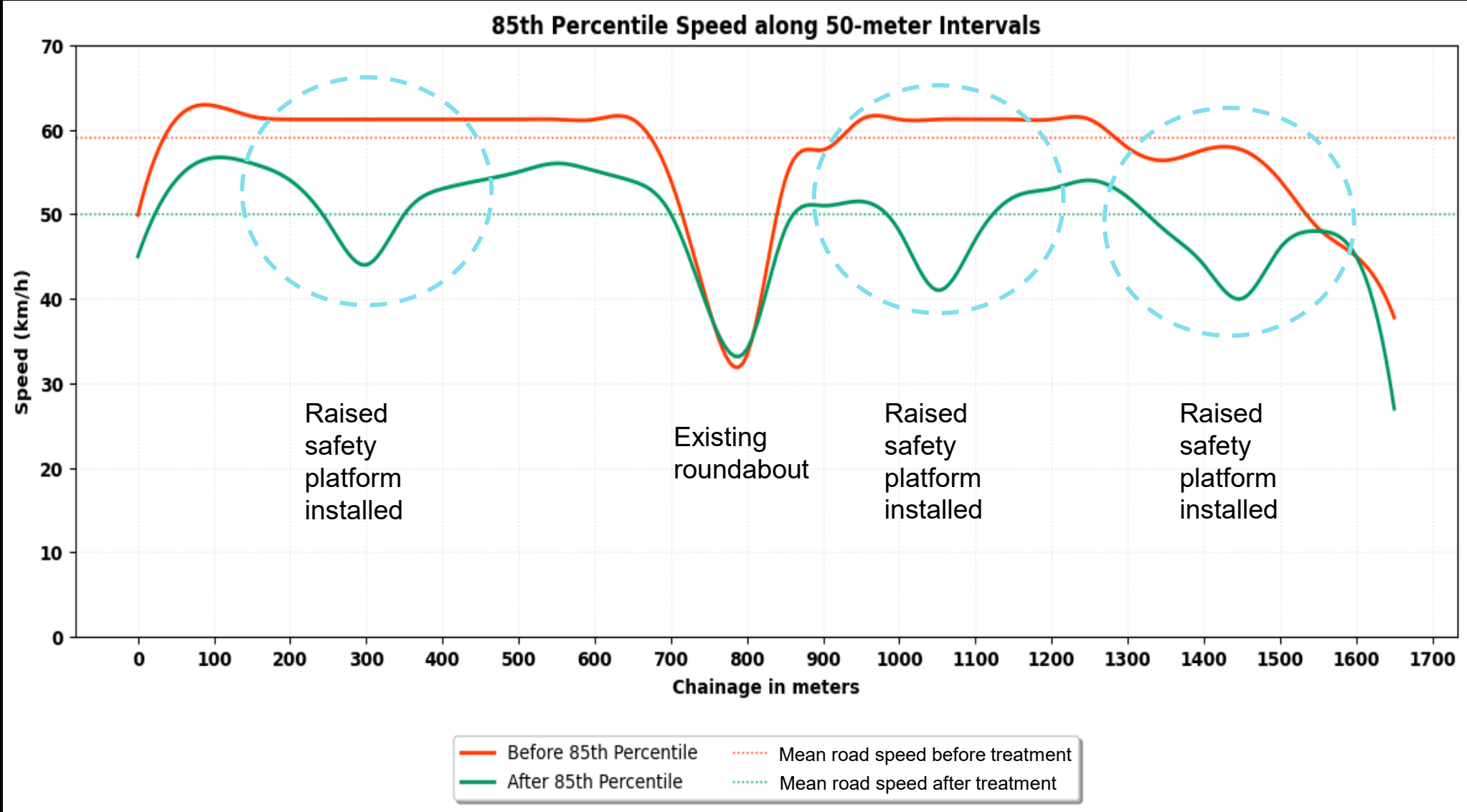
That was close...

- Most people have probably experienced one
- Unlikely to be reported
- Connected vehicle data captures them (automatically and anonymously)
- High G-forces (braking and/or swerving)
- Could be a lead indicator

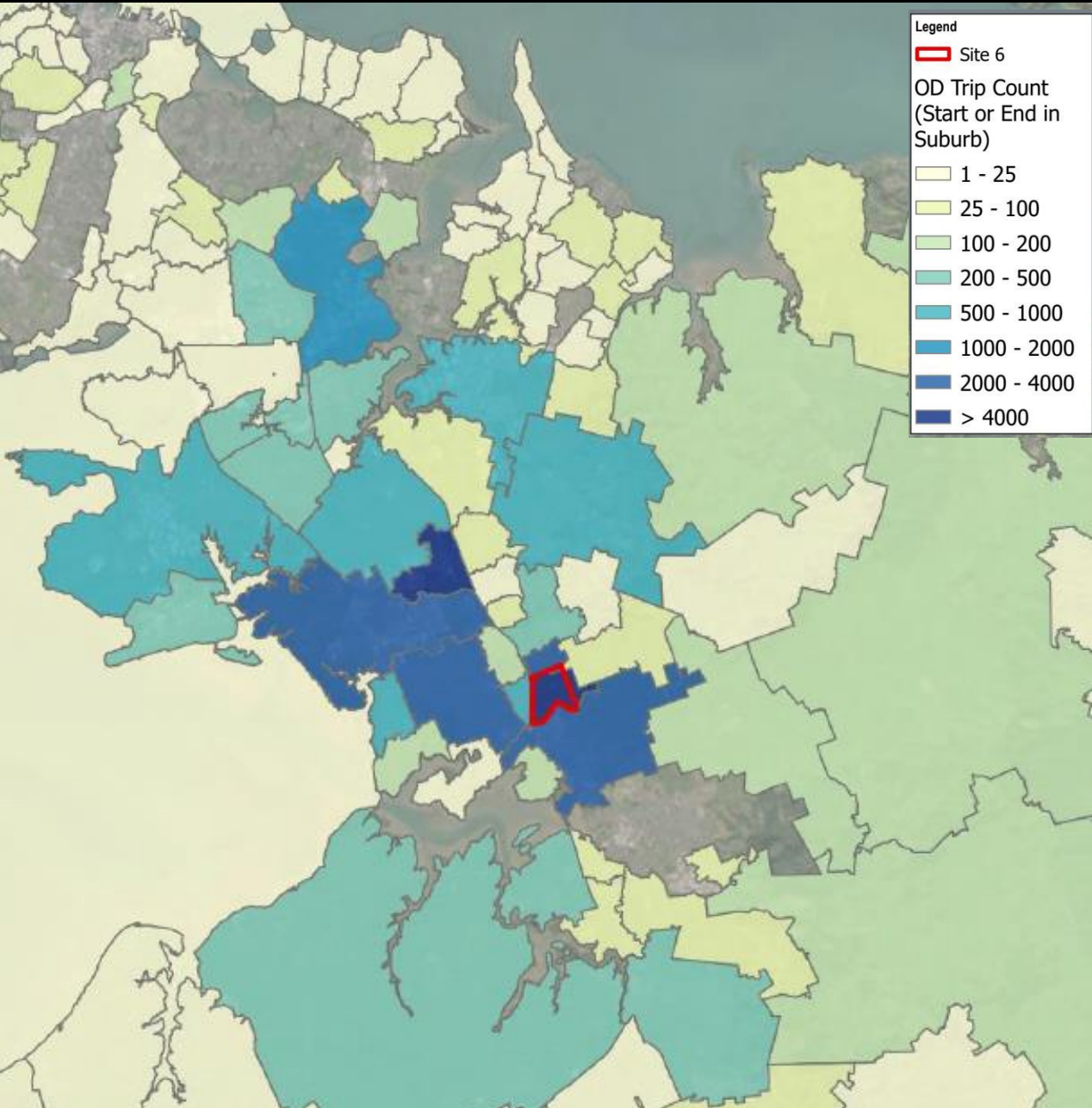
Seeing the unseen...



Validating investment achieved intended outcomes



Auckland Case Study – A snapshot



Aspects investigated included:

- Speed profiles
- Acceleration profiles
- Near-miss analysis
- Traffic energy maps
- Origin-Destination route analysis
- Origin-Destination network view



What are we learning?

- Value shows up quickly when applied to the right questions.
- Know the limitations
- Data representative of modern vehicles only
- Context still matters
- Be conscious of sample size

The opportunity isn't more data – it's a wider perspective leading to more informed decisions.





Andrew Metge •
Technical Director -
Transport Planning

Becky Young •
Transport Engineer