



Future Connect

Auckland Transport's Network Plan



Presented by:

Shelale Mazari, Senior Transport Planner • Integrated Network Planning

Werner Pretorius, Head of Integrated Network Planning



An introduction to Future Connect

We will cover

- What is Future Connect?
- How we use it to help our work
- How it shows up in practice



What is Future Connect?



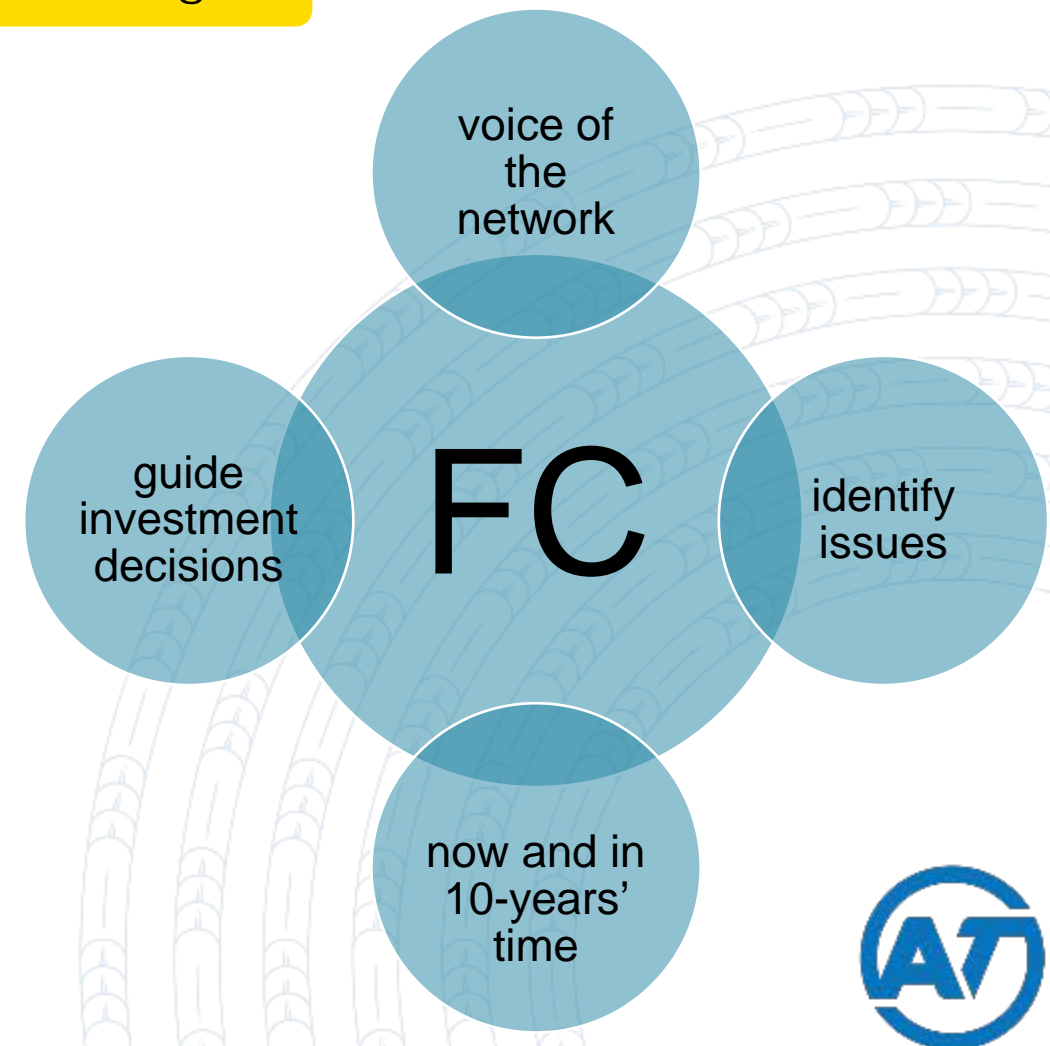
Future Connect is AT's network plan

It shows us the purpose of each road and street in the region

Future Connect:

- Outlines the **strategic transport network** for each mode of transport (voice of the network)
- Analyses the networks to **identify issues** and opportunities (Like a GP)
- Houses a lot of supporting contextual data and analysis to **guide investment decisions** and recommends **focus areas** for investigation and investment over the coming decade
- Displays the overlap between funded capital projects and issues on the network (bridge to future both **now and in 10-years' time**)

AT.govt.nz/FutureConnect



Future Connect is an accessible one-stop-shop for key information about the transport network

Output

Strategic Network

Transport System Analysis

Focus Areas

Show contextual layers

Time Period

Current

First Decade

Transport Mode

Integrated Network (all modes)

Cycle and Micromobility

Public Transport

Freight

General Traffic

Walking

Show supporting networks

Intermodal Problems

Environment

Safety

Legend Network

Public Transport

- Rapid Transit Network
- Interim Rapid Transit Network
- Frequent Transit Network
- Other Strategic PT Corridors

Cycle and Micromobility

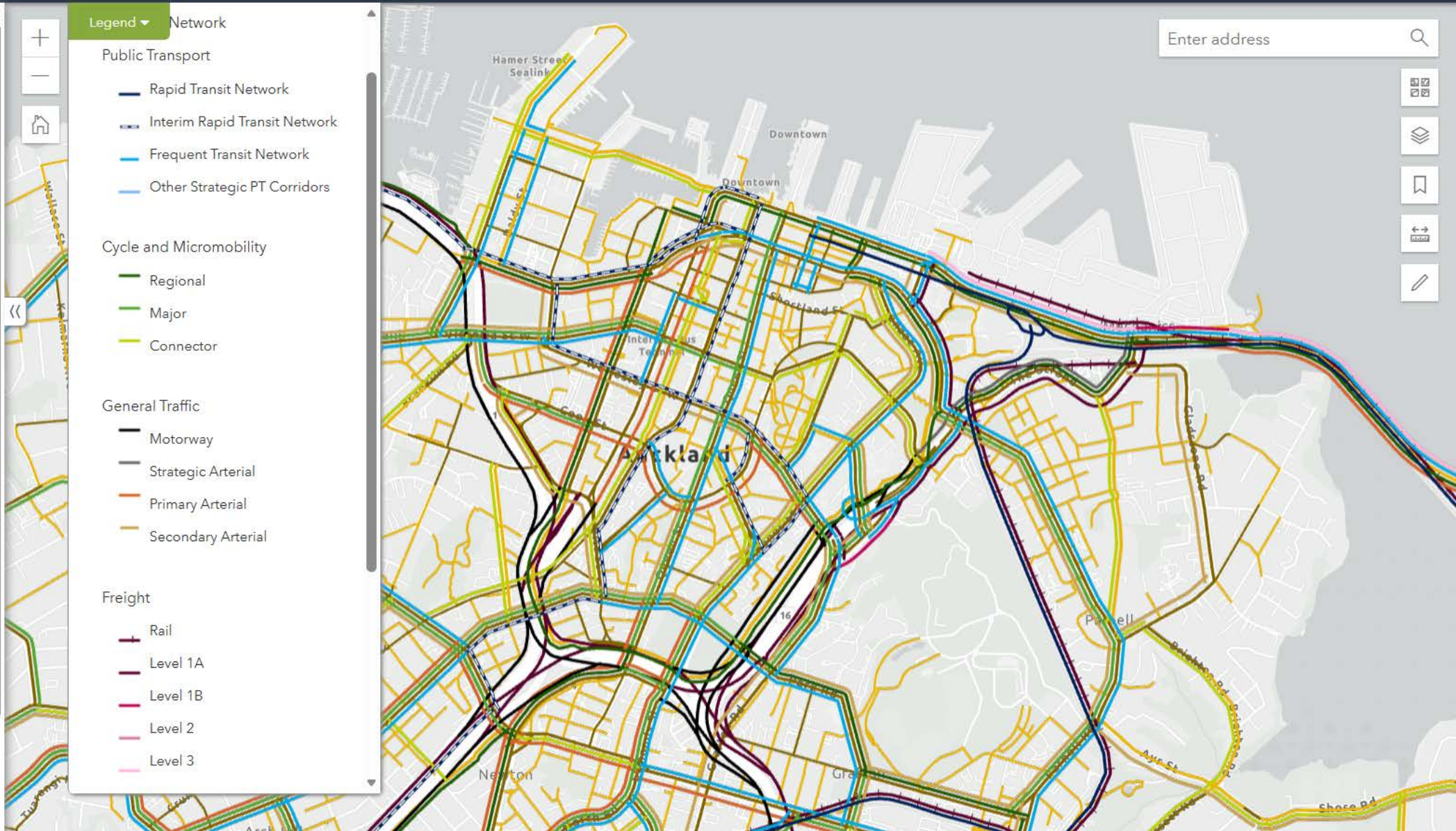
- Regional
- Major
- Connector

General Traffic

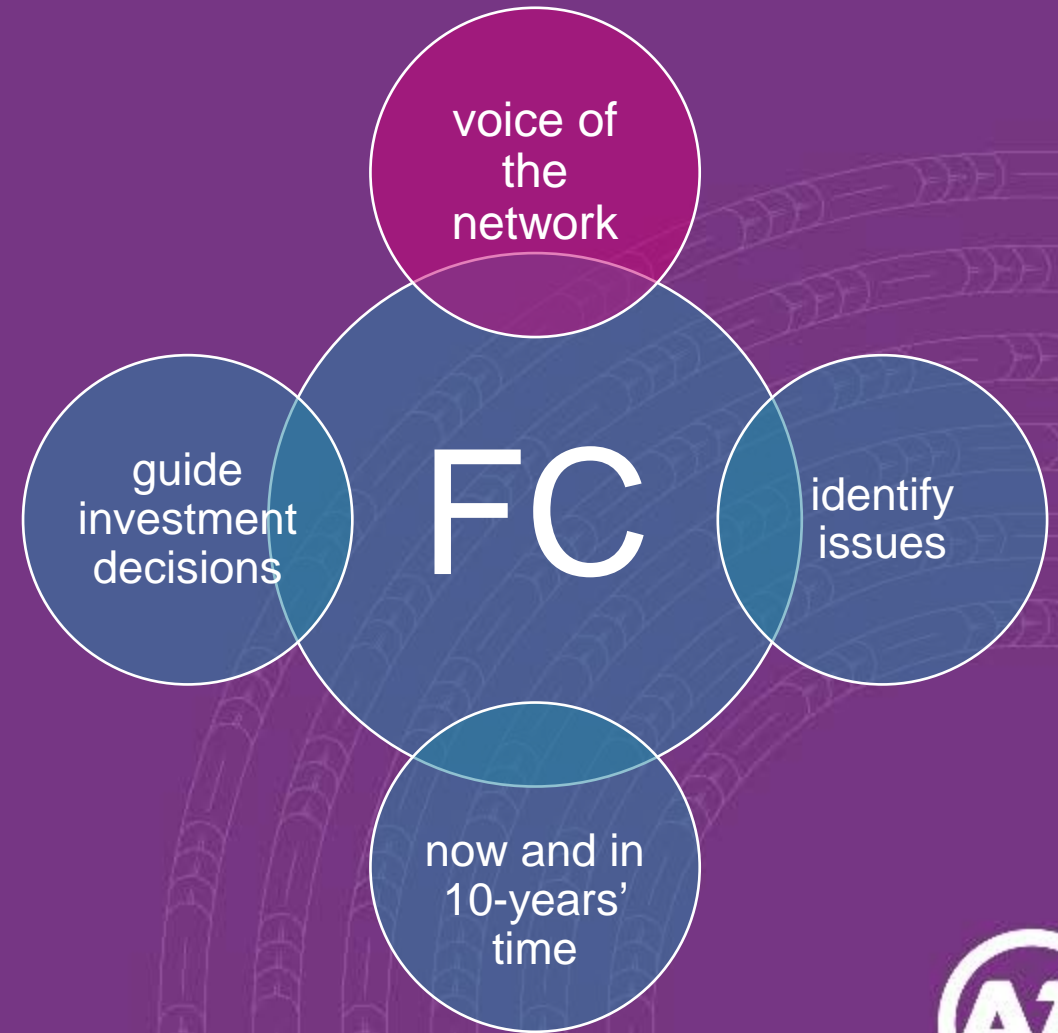
- Motorway
- Strategic Arterial
- Primary Arterial
- Secondary Arterial

Freight

- Rail
- Level 1A
- Level 1B
- Level 2
- Level 3



Voice of the network



Outlines the strategic transport network for each mode of transport

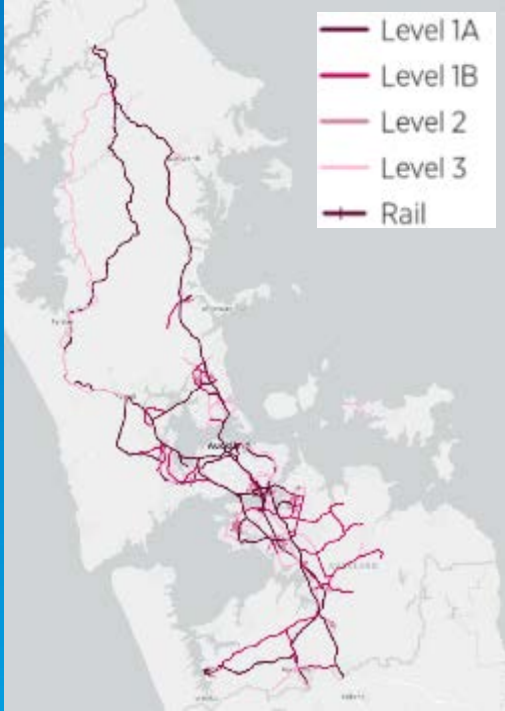
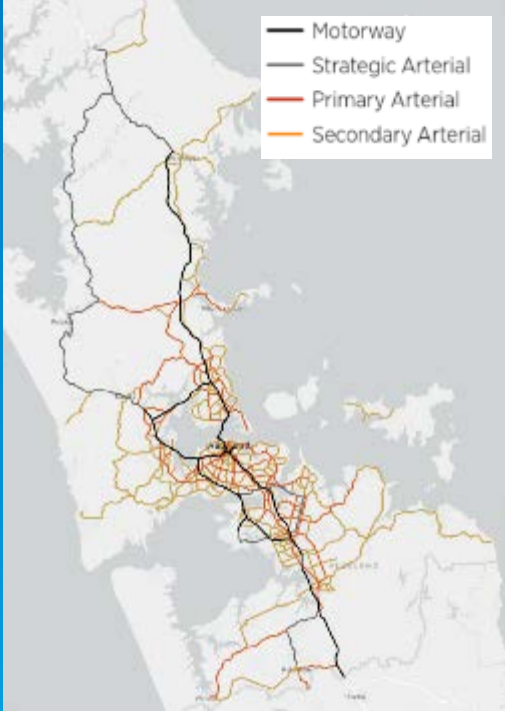
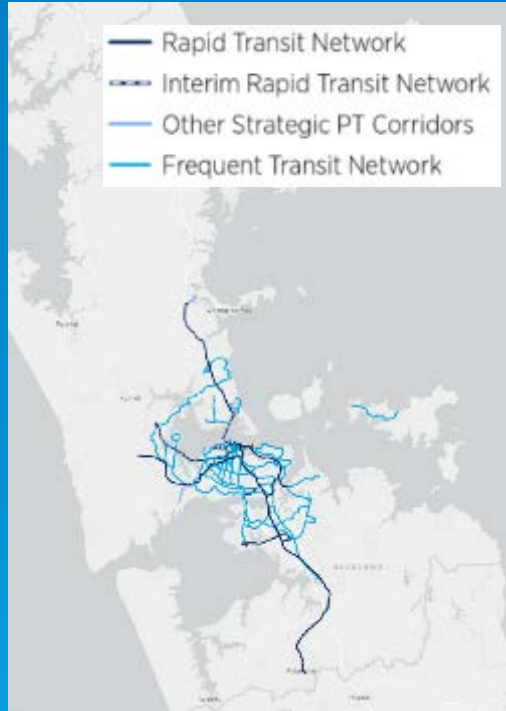
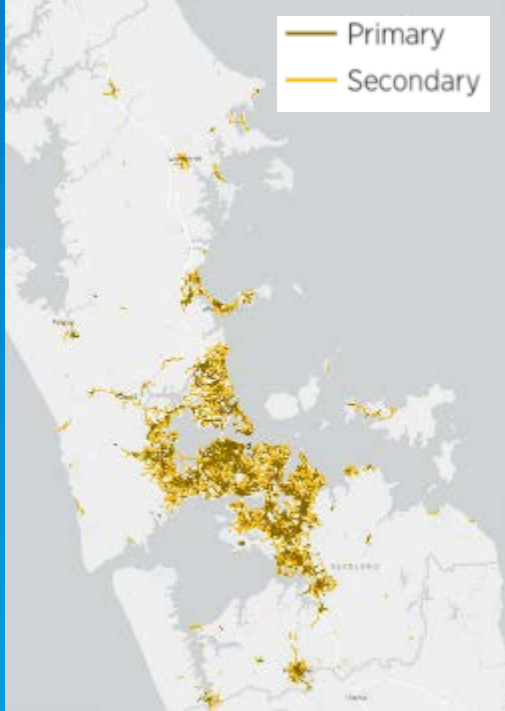
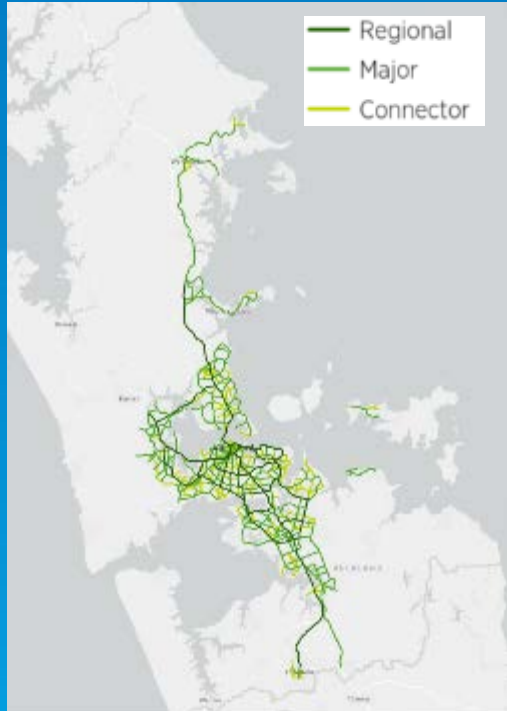
cycling

walking

public transport

general traffic

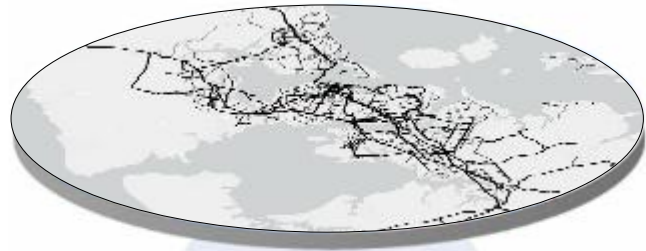
freight



Customers &

Important routes for the movement of people and goods

Strategic network insights at different levels



**REGIONAL
PLANNING**

Strategic movement



Top-down



**LOCAL
PLANNING**

Circulation by mode



Bottom-up

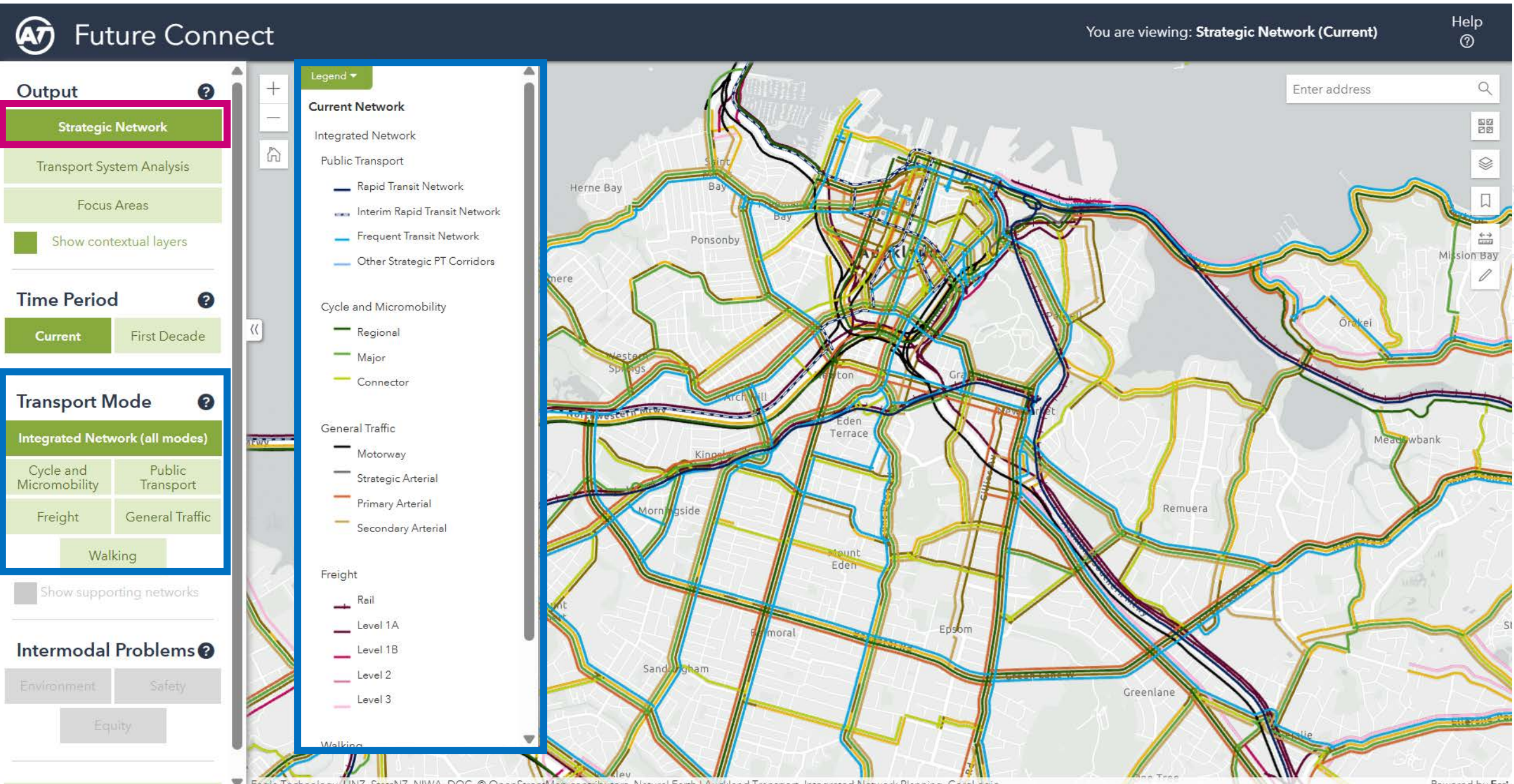


**PROJECT
PLANNING**

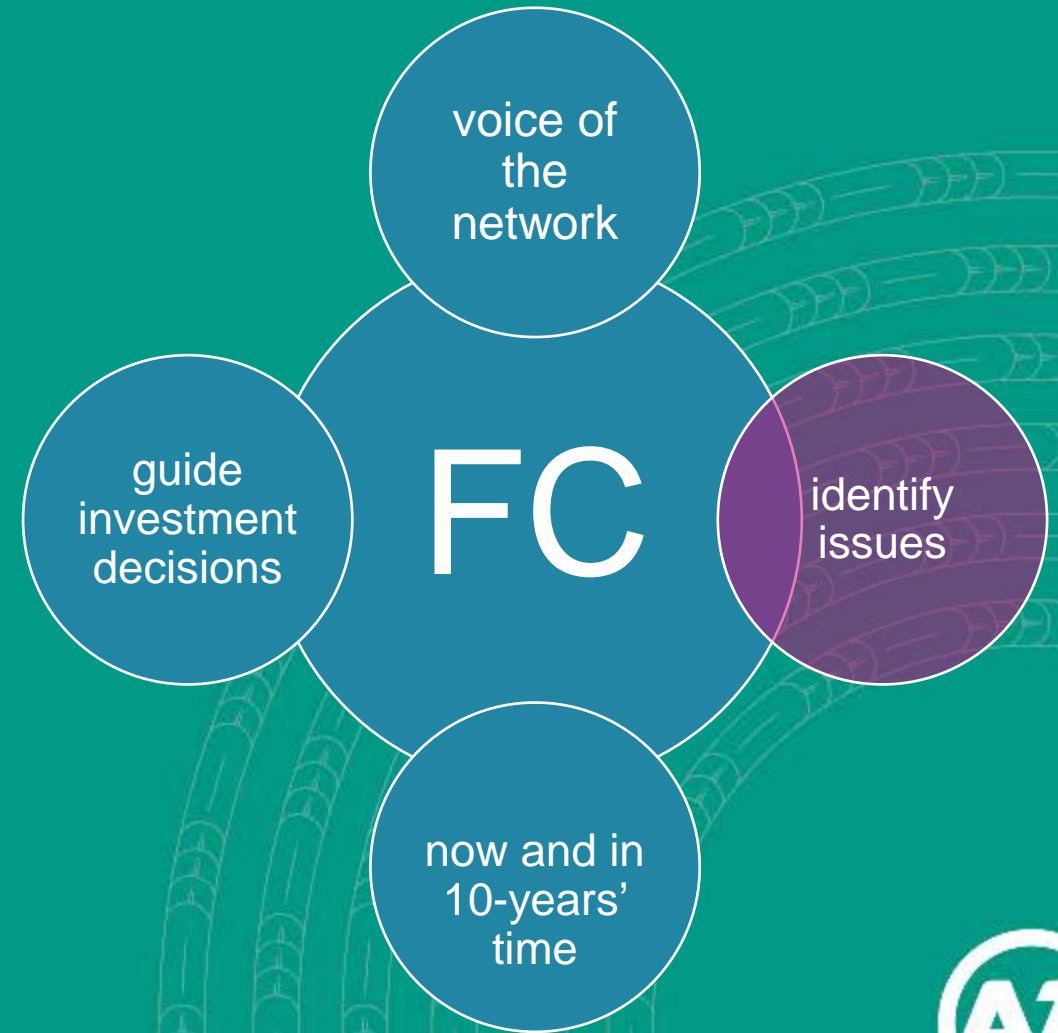
Individual corridors



Strategic networks, multimodal and hierarchy functionality



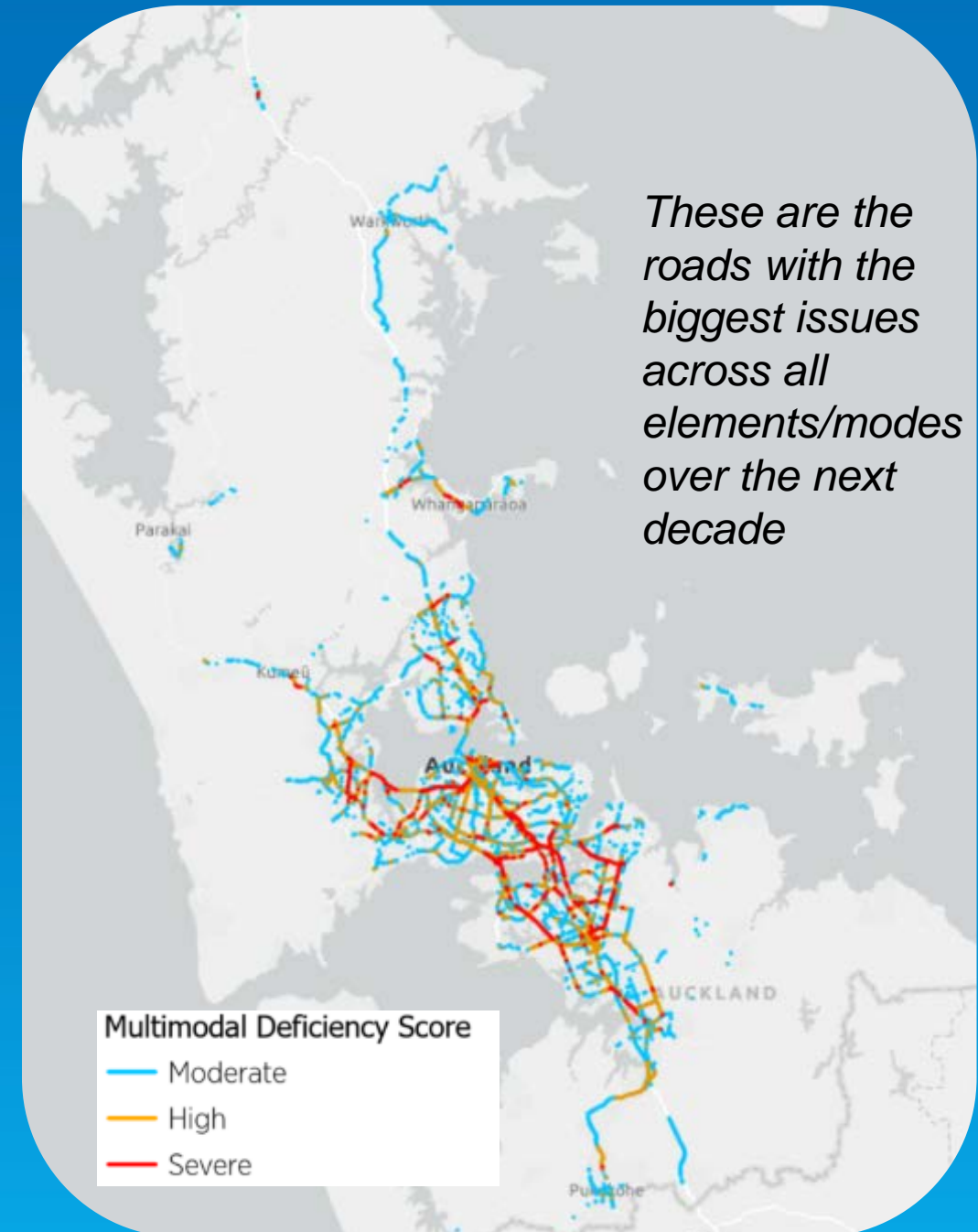
Analyses to identify issues



It uses data to analyse how the network is performing now, and will be performing in a decade's time

And not just the modal networks, but also three other elements:

- ✓ Transport equity
- ✓ Environmental factors
- ✓ Safety



Data supports this analysis

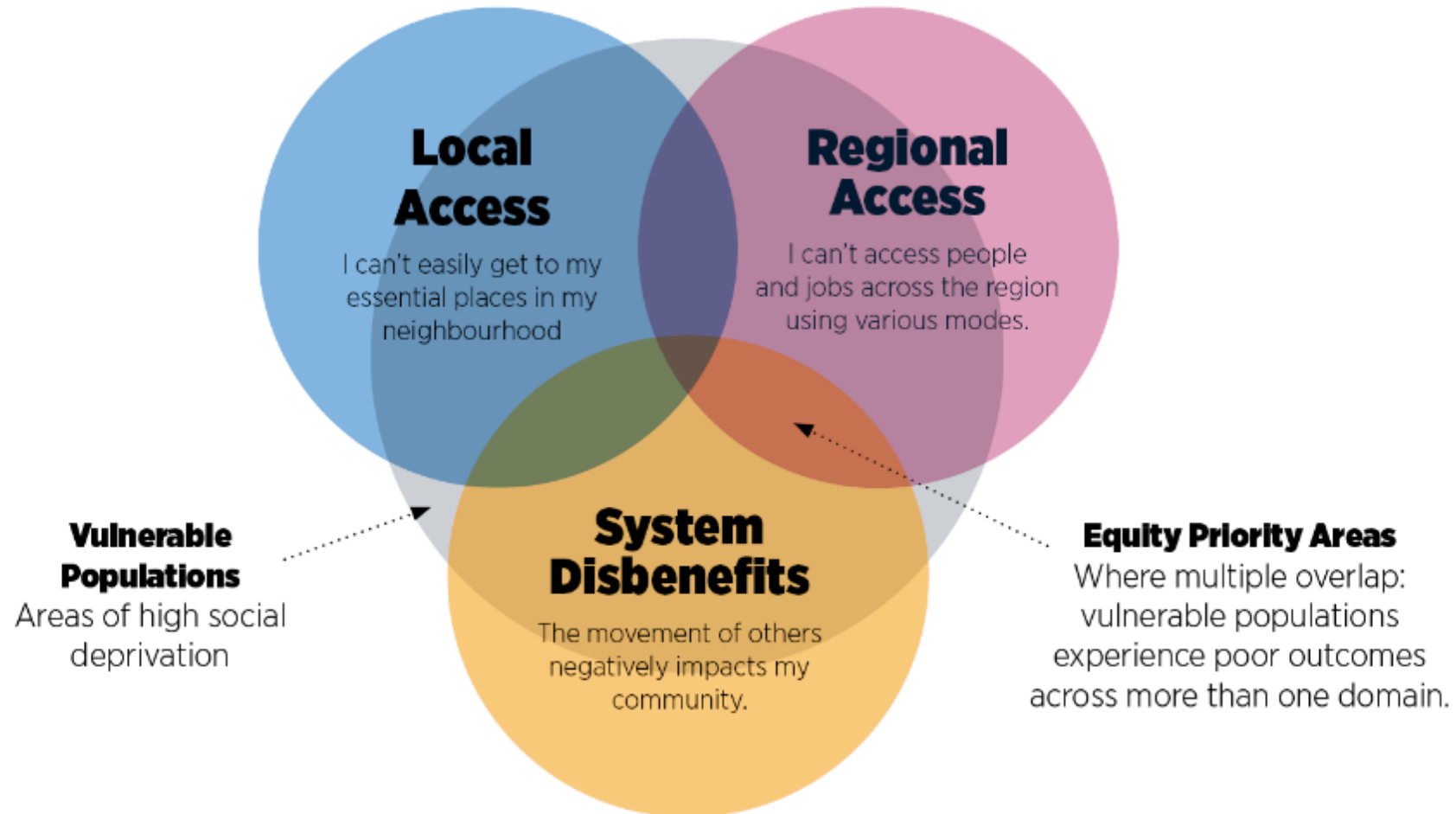
High-level summary of the data considered for each mode and problem

Public Transport	Walking	Cycling
Deficiencies <ul style="list-style-type: none"> • AM and PM Speed Level of Service • AM and PM Reliability Level of Service • Patronage/Capacity Ratio changes (forecast) 	Deficiencies <ul style="list-style-type: none"> • Footpath width compared to TDM Standard • Distance between priority crossings on busy roads 	Deficiencies <ul style="list-style-type: none"> • Unsafe or no facilities
General Traffic	Freight	Environment
Deficiencies <ul style="list-style-type: none"> • AM and PM Speed and Productivity Level of Service • AM and PM Reliability Level of Service • AM and PM volume/Capacity Ratio changes (forecast) 	Deficiencies <ul style="list-style-type: none"> • AM and Interpeak Speed Level of Service • AM Volume/Capacity Ratio Changes (forecast) 	Deficiencies <ul style="list-style-type: none"> • Untreated Stormwater Runoff • Coastal Erosion and flooding risk
Safety	Equity	
Deficiencies <ul style="list-style-type: none"> • Urban KiwiRAP Collective Risk • Urban KiwiRAP Active Road User Risk 	<p>See next slide</p>	



The transport equity part of the System Analysis is new, and complex

We focused on outcomes influenced by location



The Focus Areas are the 'so what next' of Future Connect

They summarise the biggest issues and most critical areas for intervention

Deficient Movement Patterns

- Key regional commuting flows reliant on congested motorways with little alternative options.

Multimodal Streets with Space and Safety Constraints

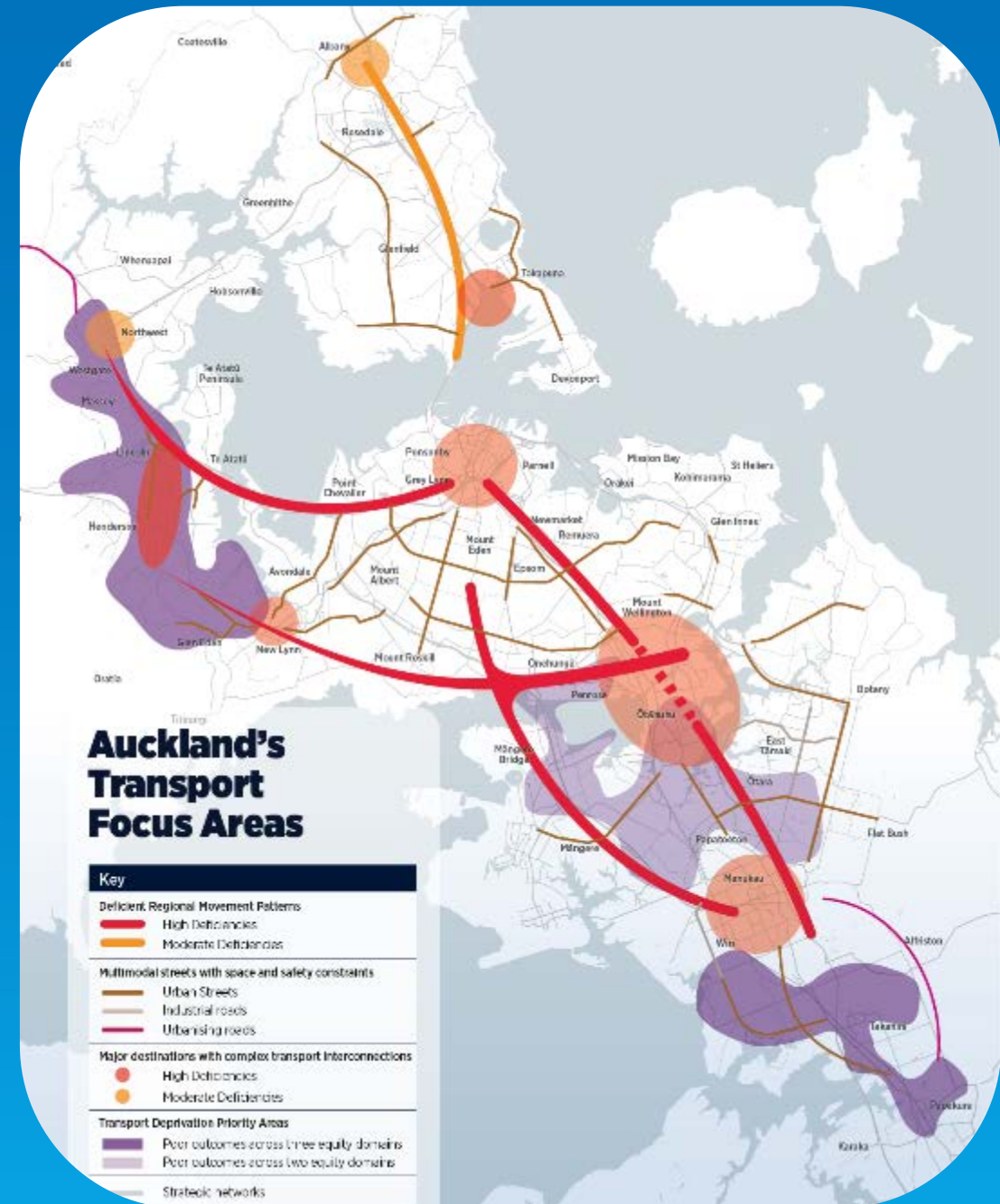
- Local Roads with significant land use interactions that are relied upon for many modes.

Major Destinations with complex transport interconnections

- Key hubs around the city where people work and study, and key transport networks interchange

Transport Equity Priority Areas

- Areas experiencing poor outcomes across at least two of the three equity domains



Transport System Analysis with multimodal and intermodal problem functionality

Output ?

- Strategic Network
- Transport System Analysis**
- Focus Areas
- Show contextual layers

Time Period ?

- Current
- First Decade**

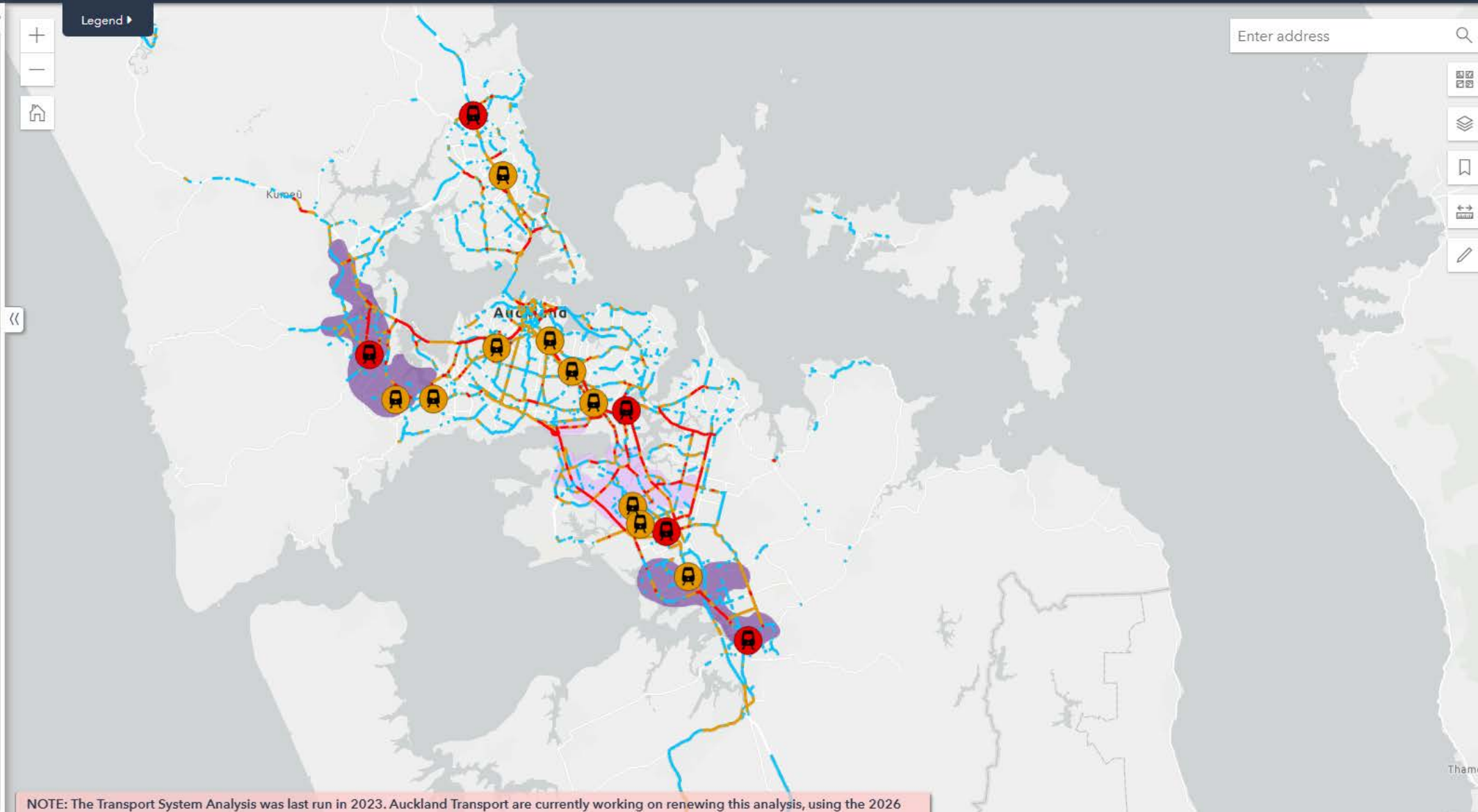
Transport Mode ?

- Integrated Network (all modes)**
- Cycle and Micromobility
- Public Transport
- Freight
- General Traffic
- Walking

Show supporting networks

Intermodal Problems ?

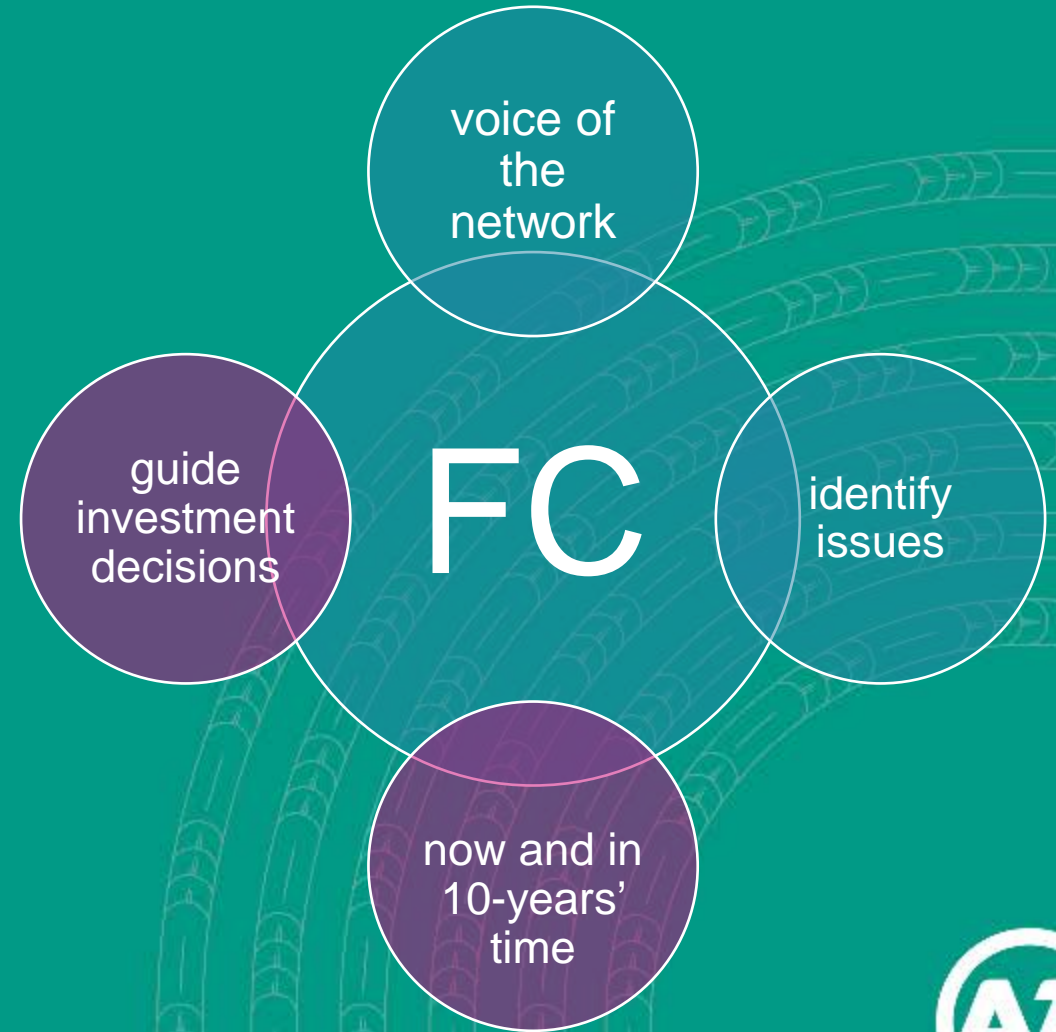
- Environment
- Safety
- Equity



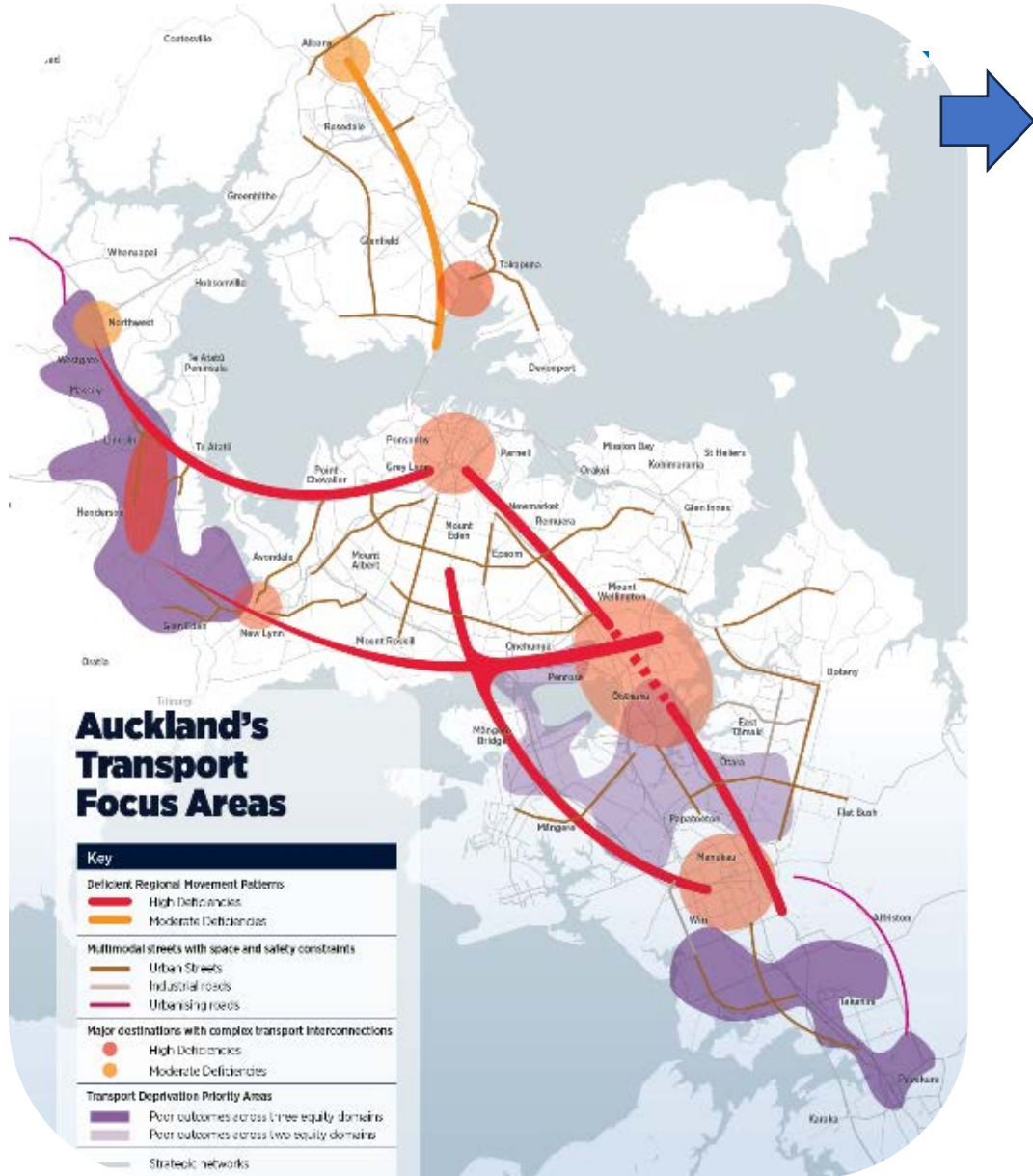
NOTE: The Transport System Analysis was last run in 2023. Auckland Transport are currently working on renewing this analysis, using the 2026 Strategic Network and other updated data inputs

Guide Investment Decisions

now and in 10-years' time

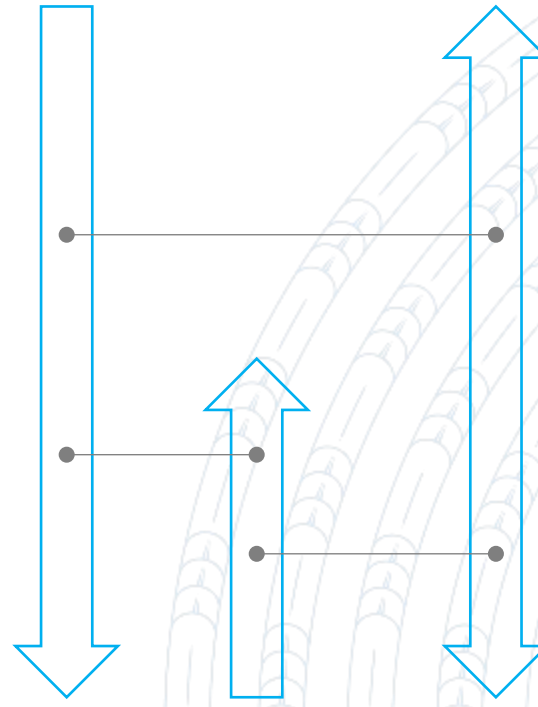


It interfaces with network improvements



Network / system improvements for the region's transport networks and services

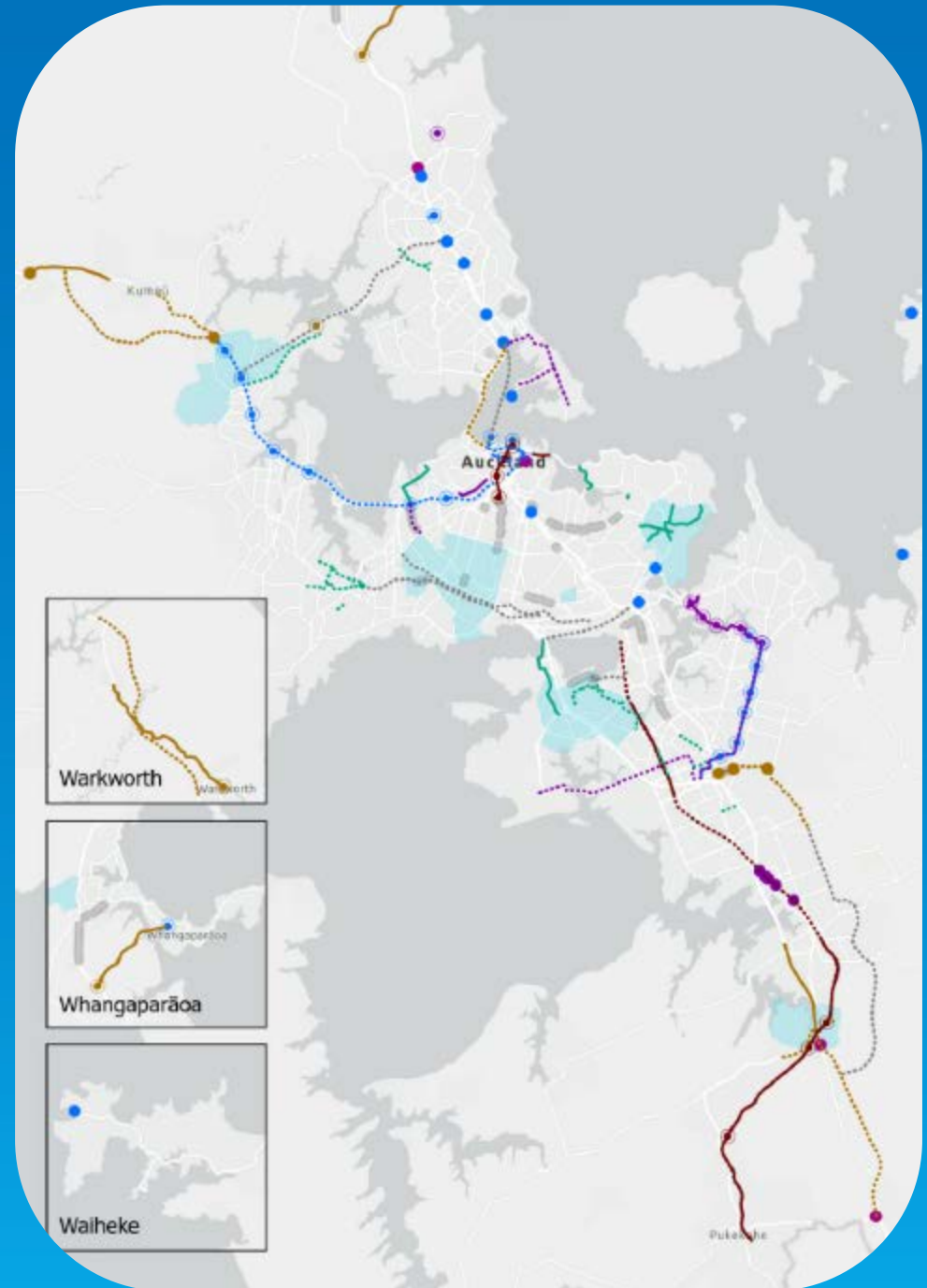
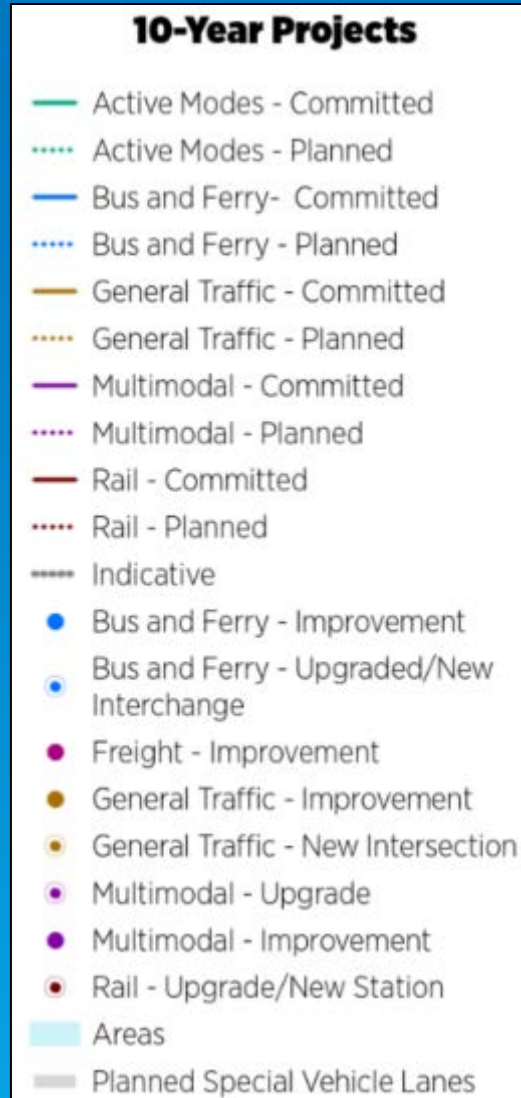
Larger Projects
(Med to Long Term)



It also houses investment projects layers (RLTP 2024)

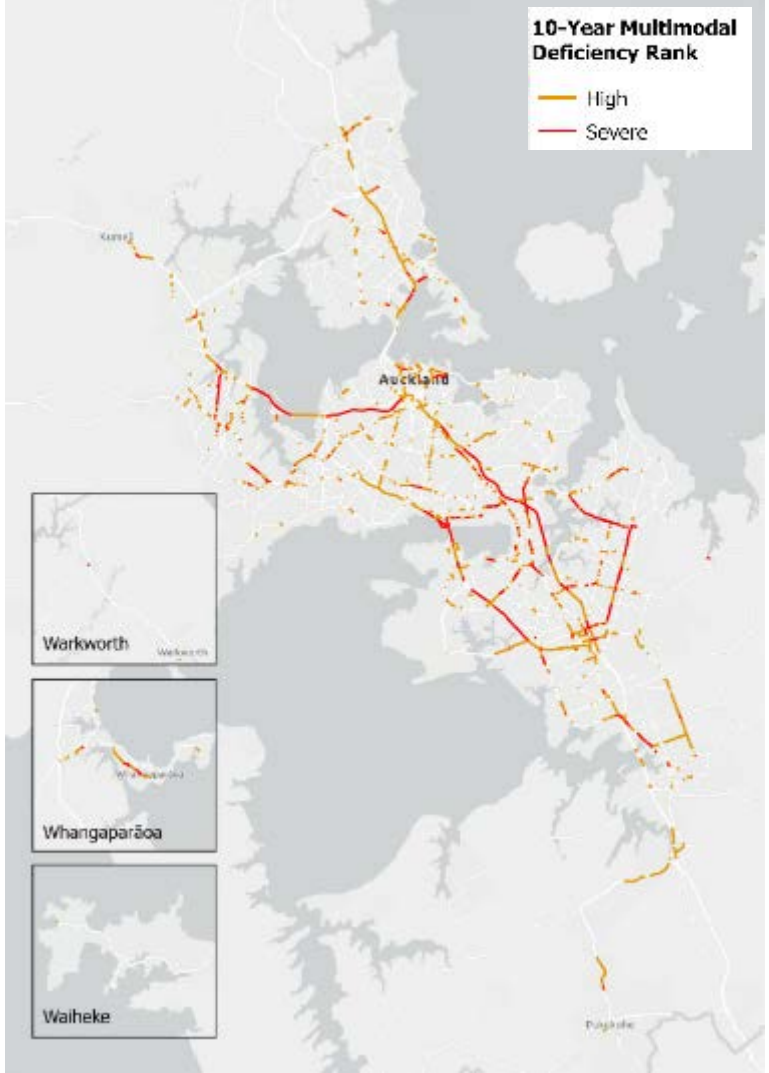
These are the major capital investments which Council and/or the government are funding, as outlined in the Regional Land Transport Plan.

- Only includes major projects.
- It provides a good indication of the scale of investment and change.

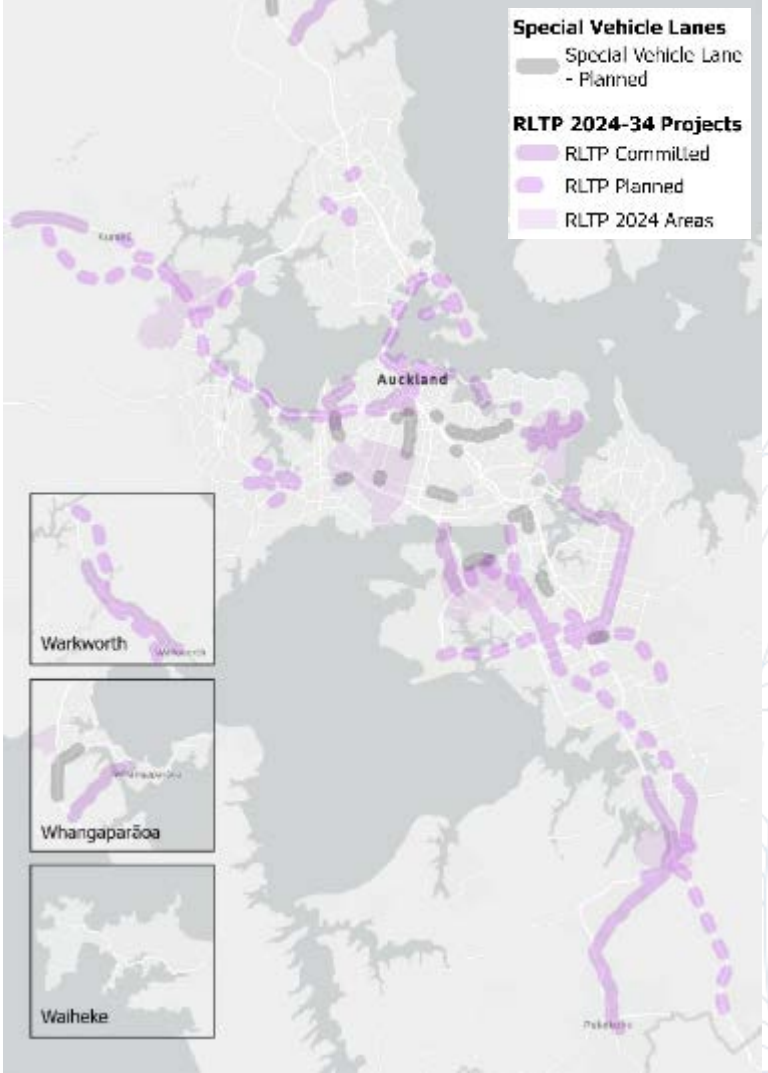


We also compare deficiencies and projects, to ensure we are fixing problems in the right place

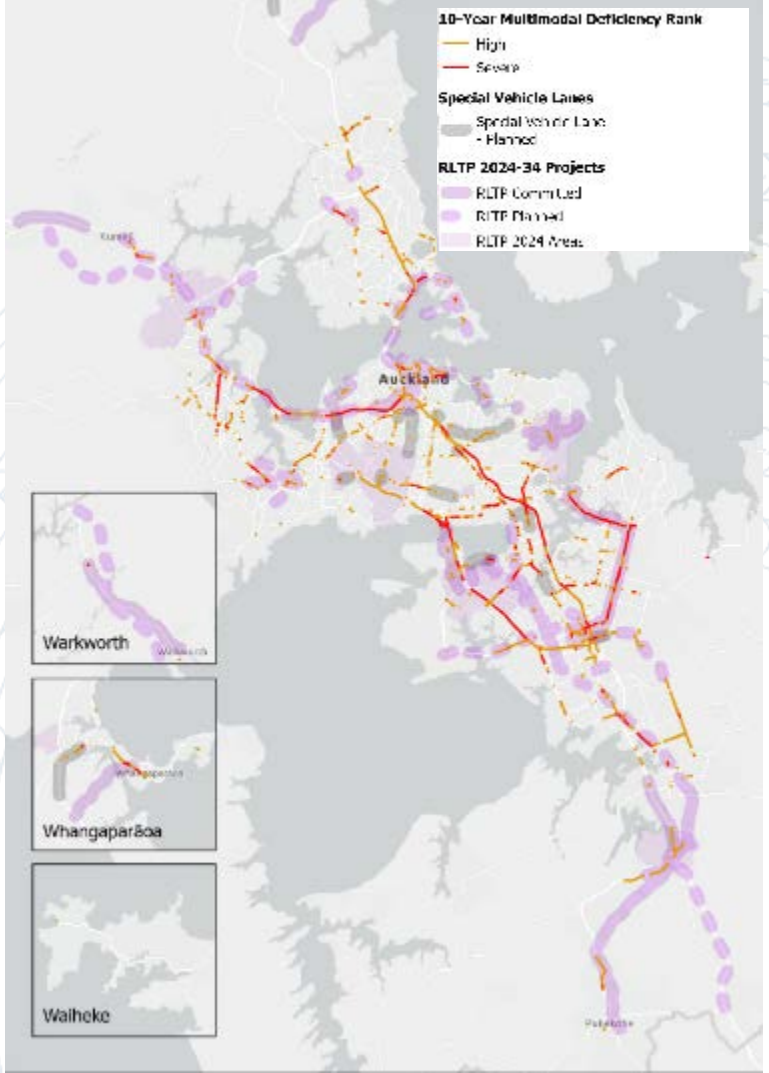
10-Year Deficiency Map
(High and severe multimodal deficiency rank)



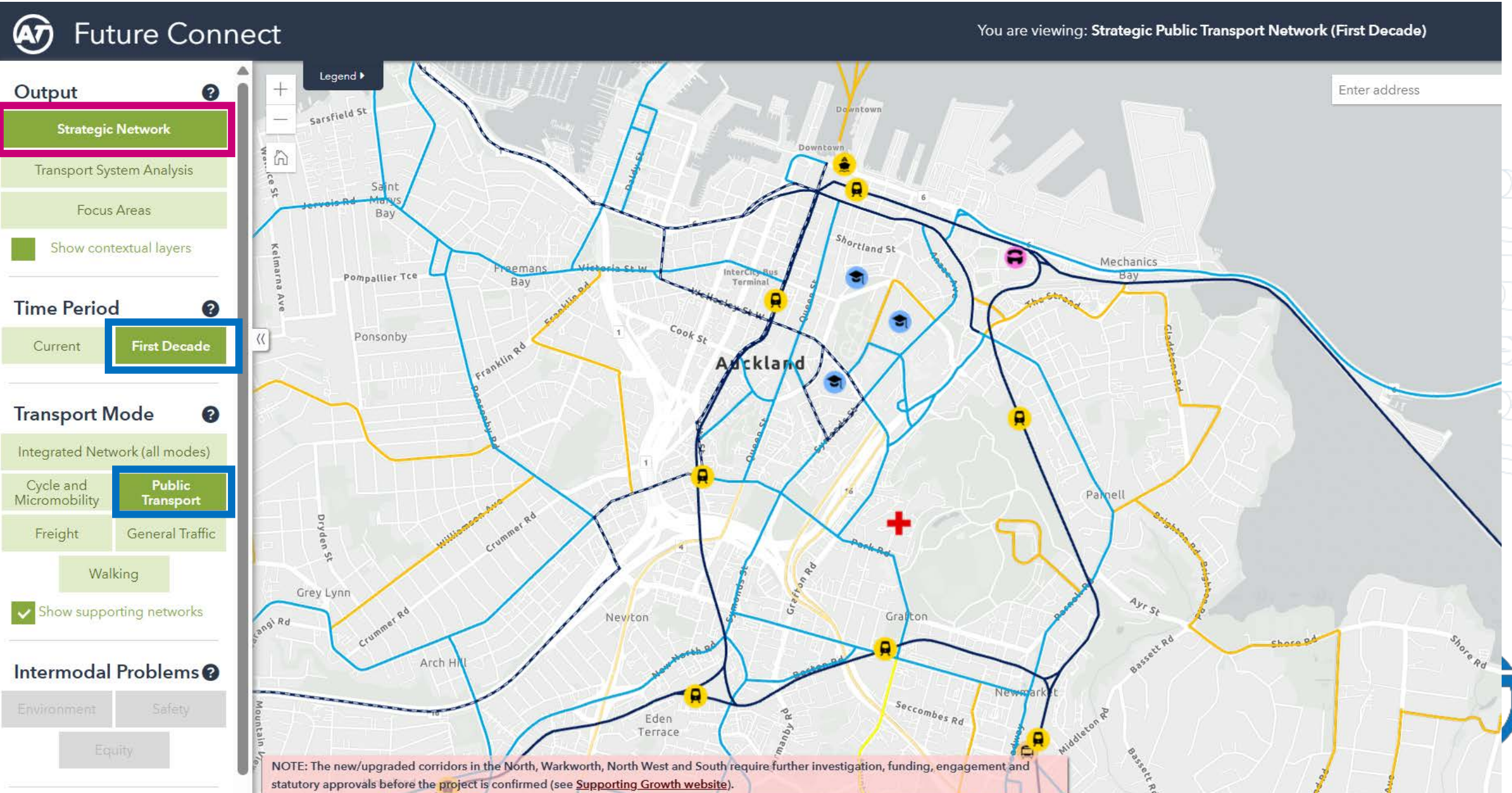
Committed and Planned Projects Map
(RLTP and SVL Projects - from previous map)



Overlay of the Two Maps
(Projects + high deficiency corridors)



Strategic insights both now and in 10-years' time (Post-CRL example)

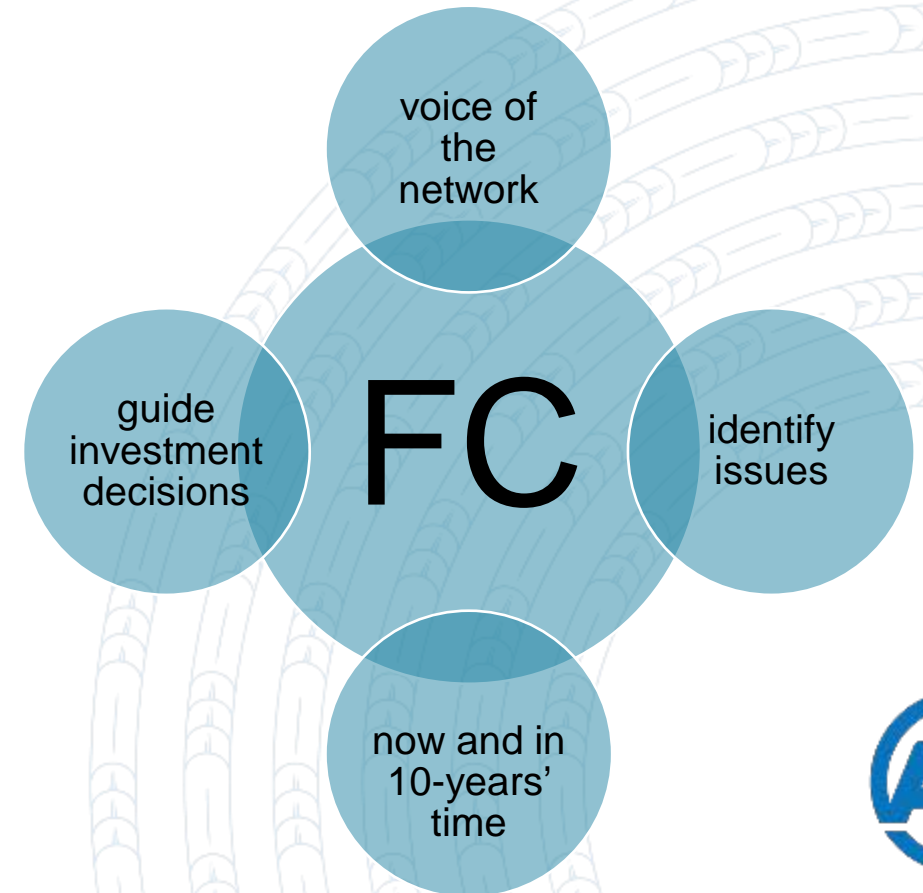


Future Connect is AT's network plan

It's a critical tool we use to measure what matters most

+

One-stop-shop for key information about the transport networks, issues and investment insights



The Future of Future Connect

We are currently working on updating the deficiency analysis

- We have updated the modal networks for a more accurate reflection of how corridors are being used, now and in the future.
- Work is underway on updating the deficiency analysis based on these changes, and latest data and insights.
- The updated version will assist Auckland Council in developing the next step of transport investment decisions in 2027.



Questions **Pātai?**



Thank you

Shelale Mazari, Shelale.mazari@at.govt.nz

Werner Pretorius, Werner.Pretorius@at.govt.nz

