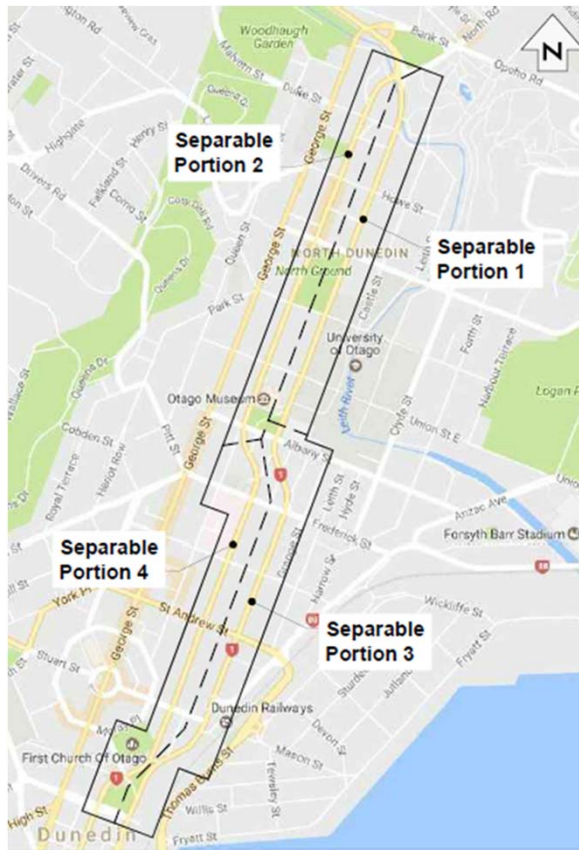


SH1 Dunedin One-way System Cycle Lanes

NZ Transport Agency

July 2017



History

- Site Extents
- IBC 2011-2014
 - A fresh approach to cycle safety in the city
 - 4 cyclist fatalities, multiple pedestrian incidents
 - Interim treatment
- DBC, The preferred option

Stakeholders



- University Challenge!!
- LHS or RHS
- Did we have it right?



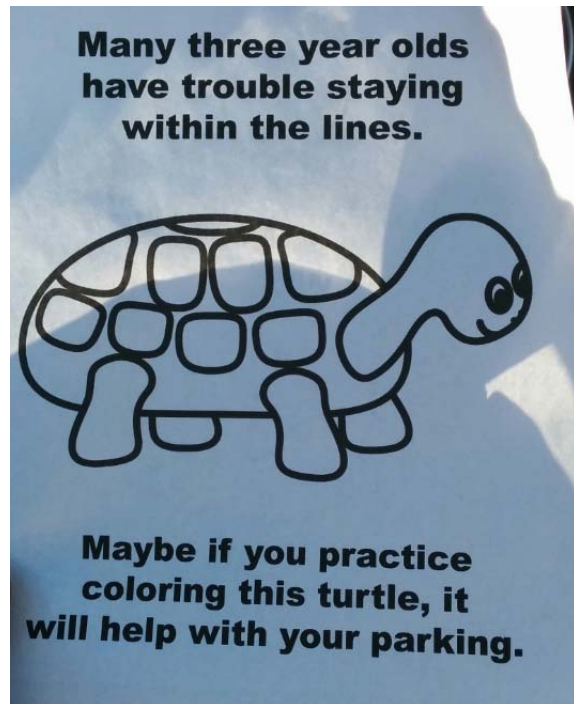
Cycle lane Width



Figure 8. Example of cyclist using the space outside the cycle track when overtaking.

- Denmark 2016, Buch, Greibe and Trafitec
- 8 different width facilities and measured 8925 users
- Conclusions

Parking



- Parking is always contentious!
- Increase in University staff now driving to work
- Key Stakeholders
- Removal of parking, net gain!!

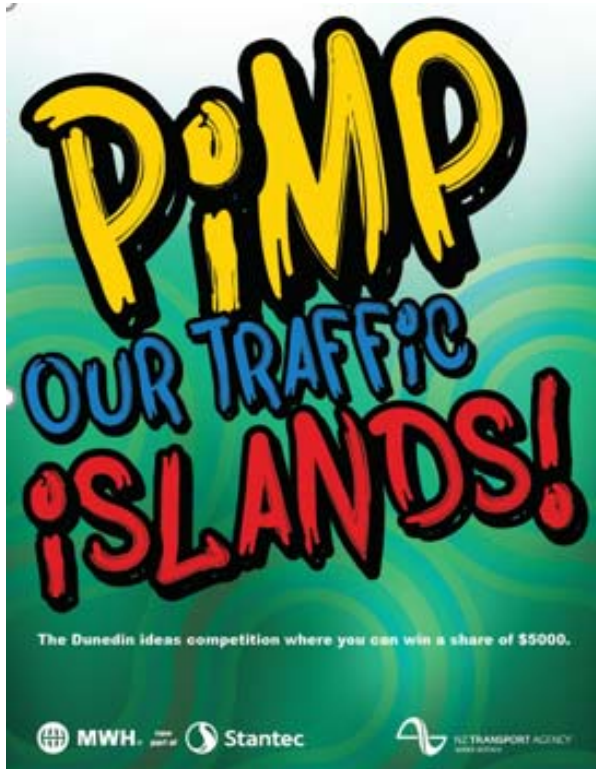


Precast Separators



- Recalibrated size.
- Construction impacts
- Quality control
- Safety

Competition-Urban Design



Asphalt vs Concrete

Otago Polytech

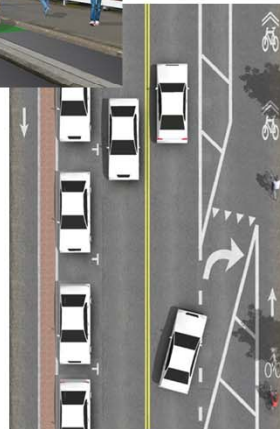


Observation – SP1

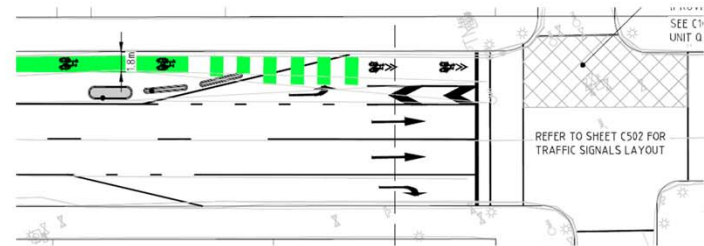


- Public perception
- How the facility is being used
- Quality control
- Safety

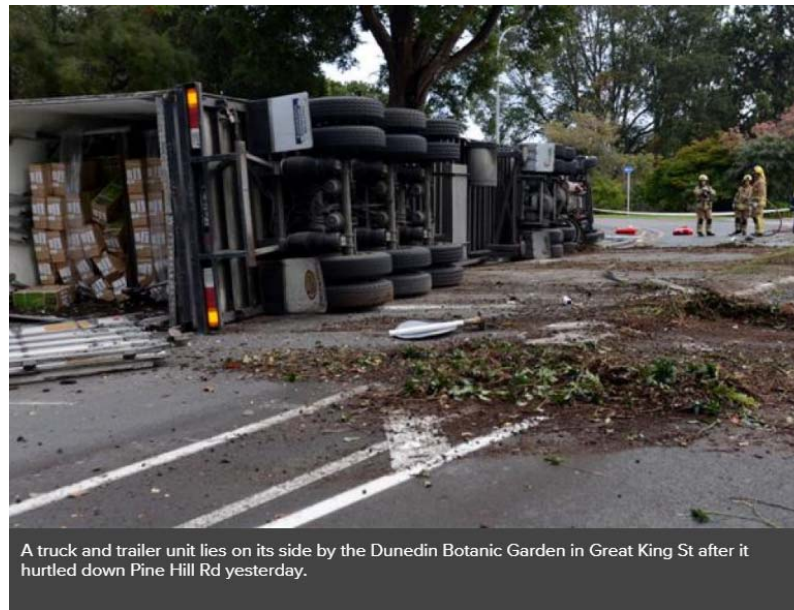
Traffic signals



- Shared Turning Lanes
- Nacto
- NZ Situation
- Design Criteria



Have the challenges finished?



A truck and trailer unit lies on its side by the Dunedin Botanic Garden in Great King St after it hurtled down Pine Hill Rd yesterday.

- SP1 and SP2 95% complete
- SP3 50% complete
- Hospital Design and Construction
- Pinehill Rd Intersection

In memory of Dr Chris He

