



For all truck &  
trailer maintenance

8 Prescott Street, Penrose, Auckland  
**0800 501133**

HOME

PARTS

SERVICES

ABOUT US

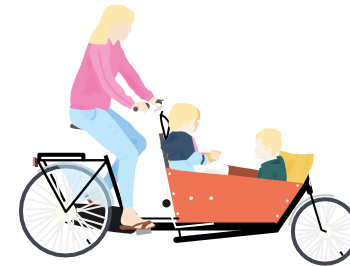
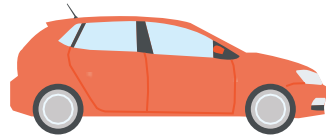
CONTACT US



# Definition

---

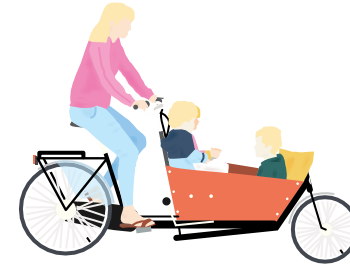
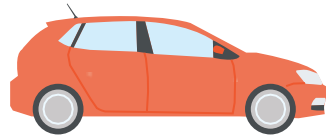
“An application of strategies, policies and initiatives to reduce travel demand or redistribute demand across multiple modes of transport.”



# Definition

---

“An application of strategies, policies and initiatives to **reduce travel demand** or redistribute demand across multiple modes of transport.”



# What we did

---



Sydney



Amsterdam



Seattle



Vancouver



Singapore

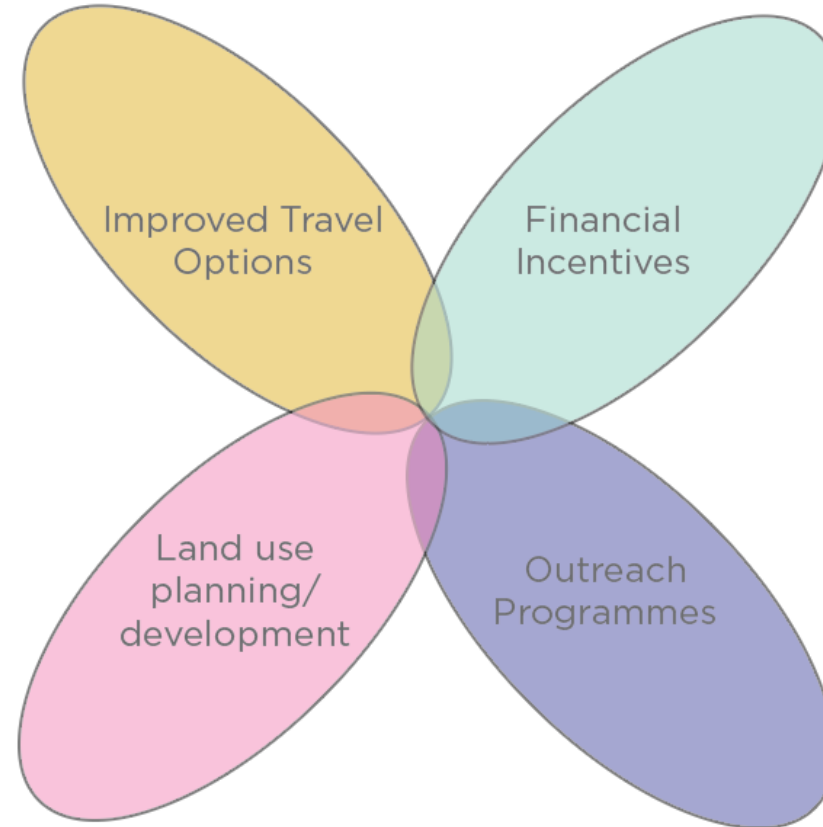


London



# What we found

---



The term 'TDM' is used inconsistently

There are no silver bullets

Major events or disruption offer an opportunity  
to trial TDM strategies



TRAVEL DEMAND  
MANAGEMENT  
OPTIONS IN BEIJING

# Growth and Vehicle Travel Red

ns have vehicle travel reduction targets. Integrated Si  
to achieve these and other planning goals.

October 8, 2019, 5am PDT



7/03  
**EPOMM**  
 European Platform On Mobility Management  
 www.epomm.org  
 MOBILITY MANAGEMENT FOR PUBLIC TRANSPORT

The term 'TDM' is used inconsistently



A scenic view of a canal in Amsterdam, Netherlands. In the foreground, several bicycles are parked on a bridge with a dark metal railing. The canal is lined with lush green trees and buildings. In the distance, a church spire is visible against a clear sky. The overall atmosphere is peaceful and picturesque.

“It’s in our DNA”



A photograph of a city street scene, likely in New York City, showing a blue bus, several cars, and a group of cyclists riding on a dedicated bike lane. The background features tall city buildings. The text "A TDM lens" is overlaid in the center of the image.

“A TDM lens”



# Objectives determine outcomes

---





# Objectives determine outcomes

---

## Emissions and Growth – Seattle’s CTR programme

Seattle's Commute Trip Reduction (CTR) program plays a crucial role in the city's effort to reduce congestion and provide mobility choices.

## Washington State Legislature

- Growth Management Act – 1990
- Commute Trip Reduction Law - 1991



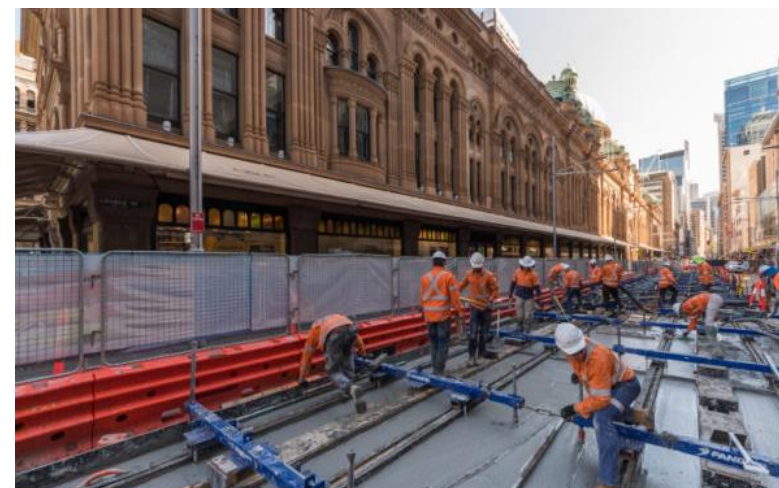
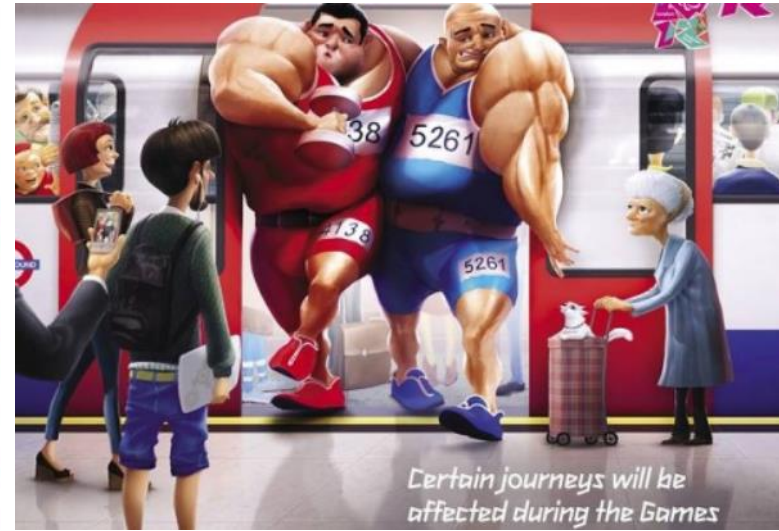


# There are no silver bullets

---



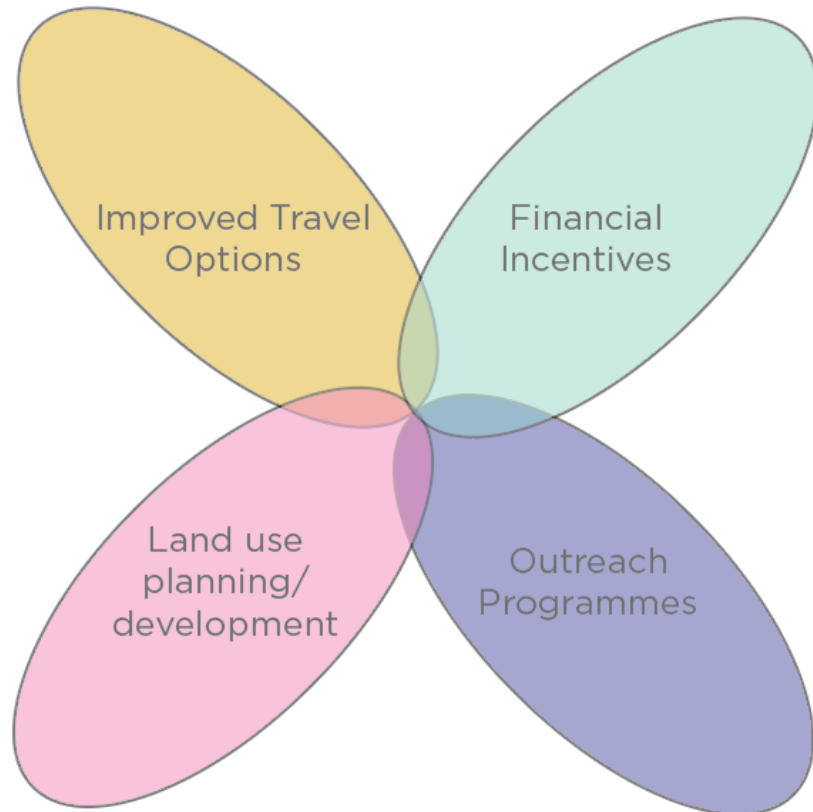
# Events/disruption are golden opportunities





# Call to action

---



NZTA research report  
published this month  
Knowledge Hub – March 30  
[fthomas@mrcagney.com](mailto:fthomas@mrcagney.com)