

# Transport Choices

Delivering communities with transport options, quicker and cheaper

Greg Bassam, Team Lead –  
Transport Choices



# Context

It's a **'Crown funded'** programme

- Outside the usual National Land Transport Fund mechanism
- Government have significantly more influence on Crown funding

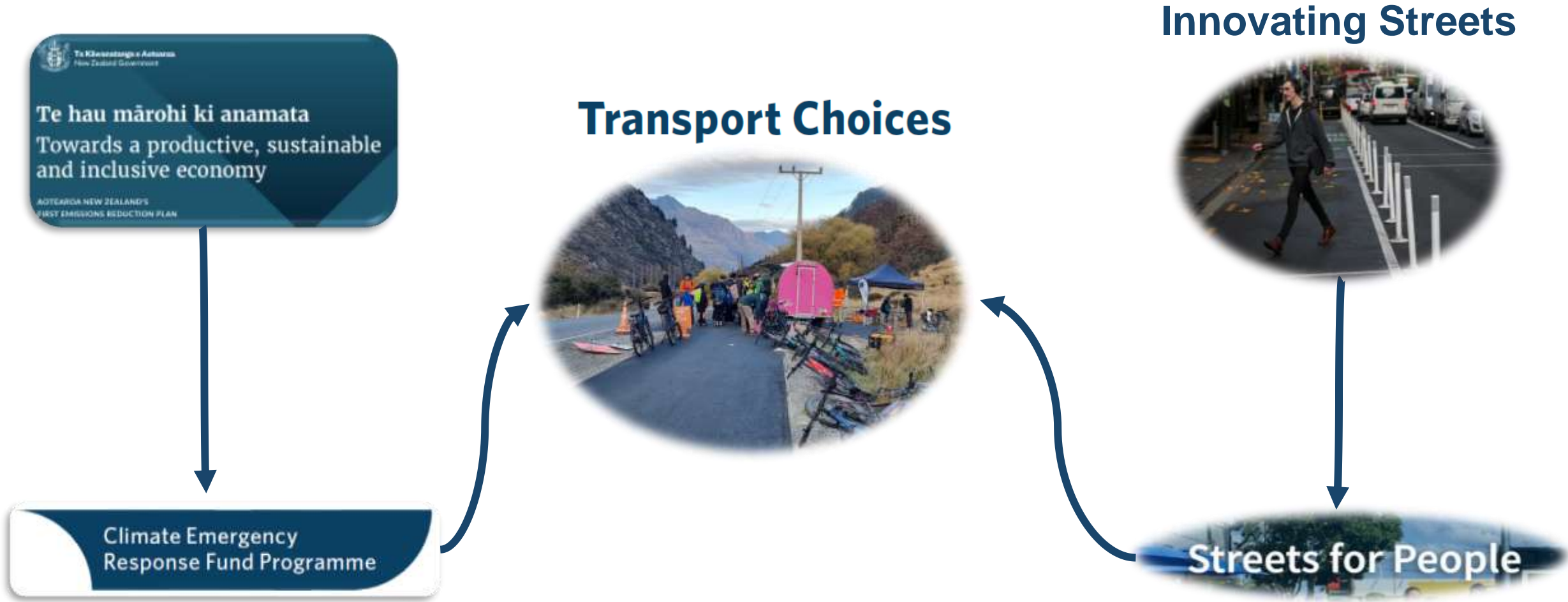
As of December 2023, the Government announced its intention to close the programme, other than those projects that were contractually committed. This announcement is in alignment with the draft GPS.

Contestable fund with Councils delivering





# Where did 'Transport Choices' come from?



**Te hau mārohi ki anamata**  
Towards a productive, sustainable and inclusive economy  
AOTEAROA NEW ZEALAND'S  
FIRST EMISSIONS REDUCTION PLAN

## Transport Choices



## Innovating Streets



## Streets for People



# Objectives & investment areas

## Objectives

Enable high-impact projects

Deliver a range of mode shift projects in a time efficient way

Build capability in a collaborative way to better deliver efficient urban transport solutions

## Investment Areas

Delivering strategic cycling networks



Supporting safe and efficient school travel



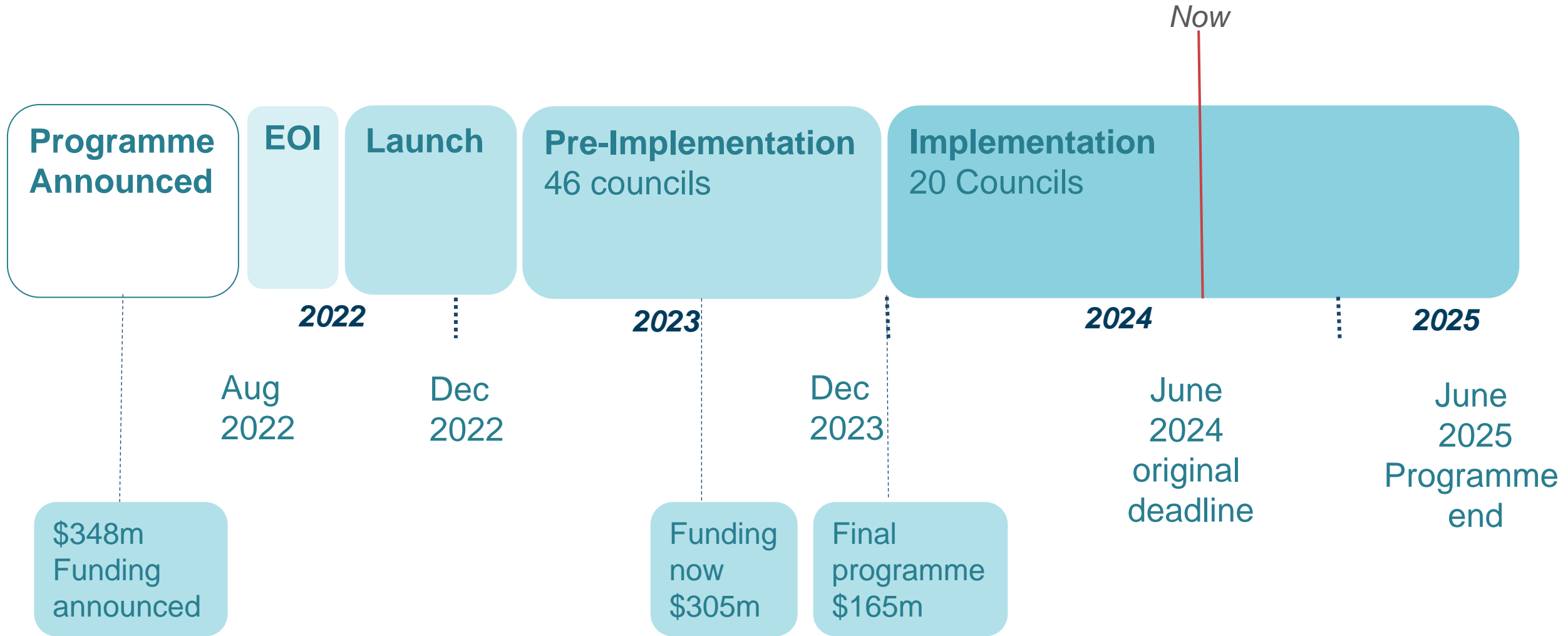
Creating walkable neighbourhoods



Making public transport more reliable and attractive



# Programme phases



# EOI selection process

More than **\$700m** worth of applications submitted at EOI stage

**46** Councils with successful EOI's

**95** packages progressed to pre-implementation

**\$30k-\$30m** individual project cost range





# Pre-Implementation

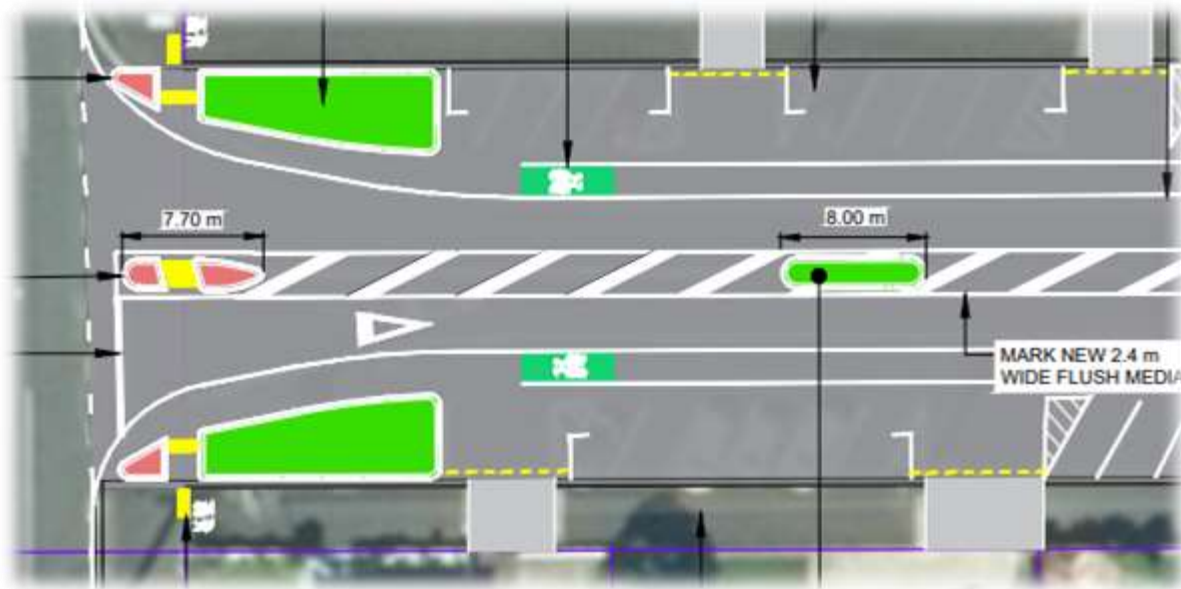
- Tight timeframe for delivery meant we were looking to support Councils and provided support with:
  - Comms & Engagement
  - Design
  - Monitoring and Evaluation
- Agile and responsive approach – limited, early release of funding
- Ensuring reporting was as time efficient as possible



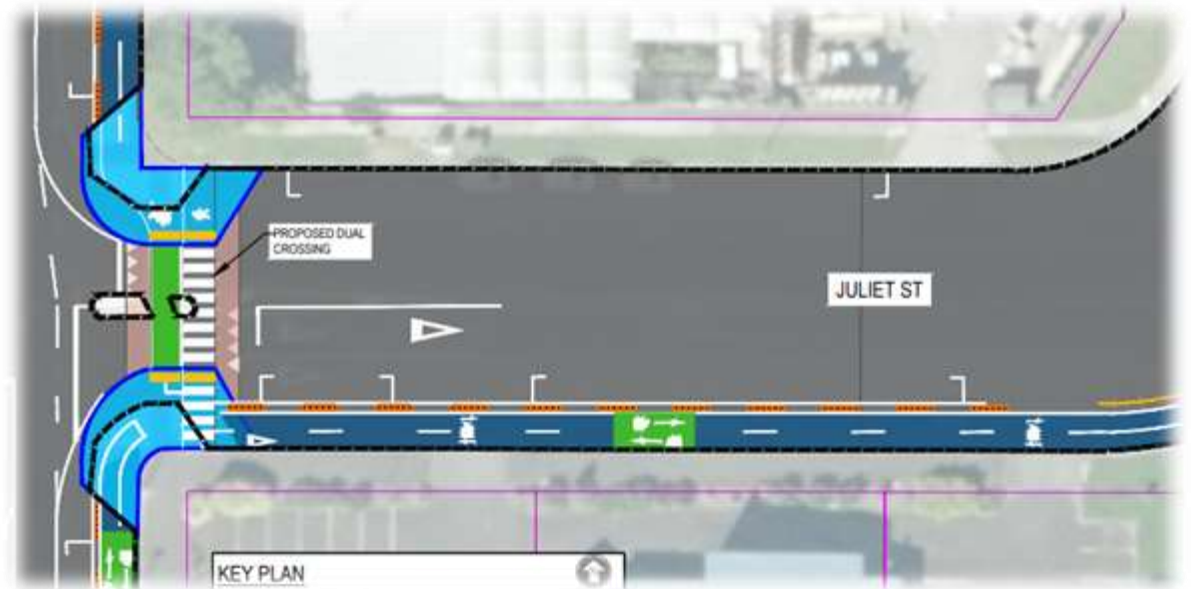
# Collaborative design support

## Stratford

Original design submitted



Final approved design





# Final programme

The final programme is made-up of those projects that were contractually committed under the previous Government.

**20** Councils

**31** Packages of work

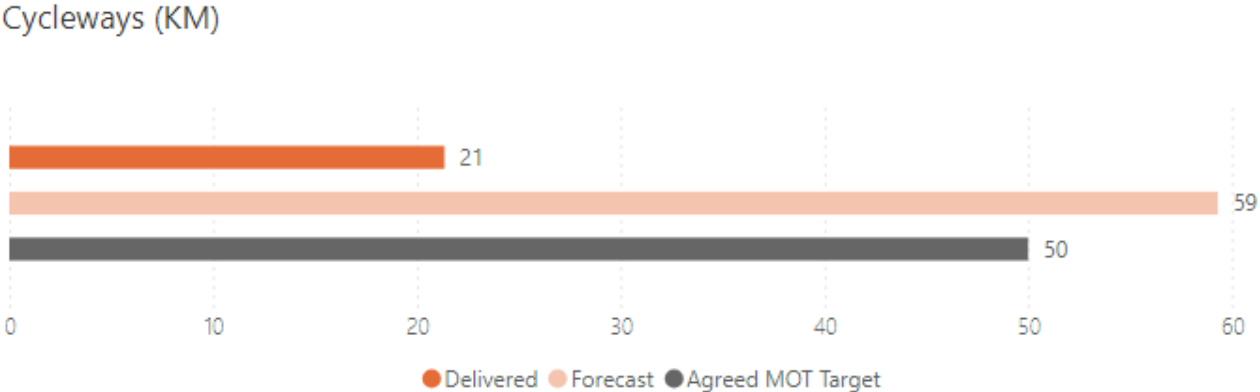
**25%** of programme already completed



# Final programme outputs – cycleways

Programme will deliver **60km of strategic urban cycleways**. This is equivalent to more than 60% of the entire Major Cycleway Network in Christchurch!

This has helped cities develop their cycling networks quicker. A lot of these cycleways use existing street space in a way that's more efficient for movement.

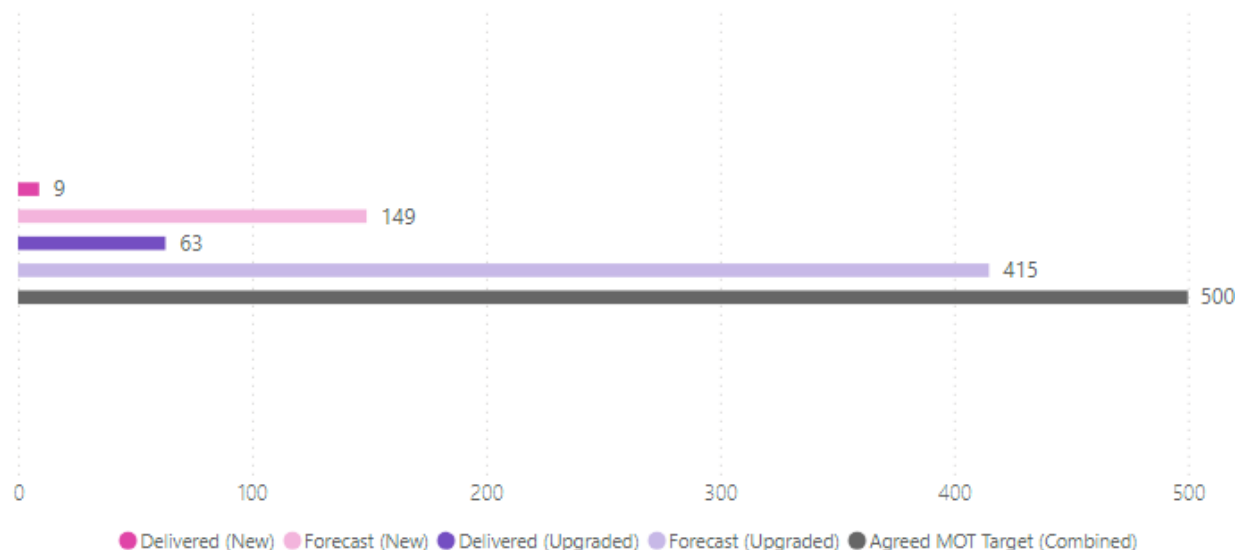


# Final programme outputs – bus stop improvements

More than **500 new or upgraded** bus stops will be delivered. This is equivalent to 20% of all bus stops in the Greater Wellington region.

Having facilities such as shelters and RTI makes public transport more attractive for people to use resulting in a more effective transport system.

Bus Stops New and Upgraded

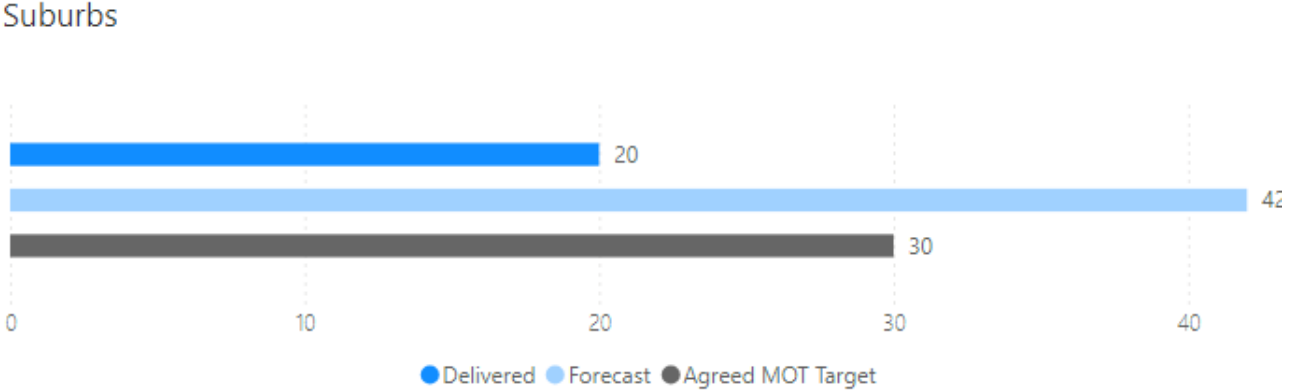




# Final programme outputs – walkable neighbourhoods

More than **40 neighbourhoods** across the motu will have improvements that will make walking more a viable option for people.

This will increase the number of shorter trips that people choose to walk resulting in fewer car trips

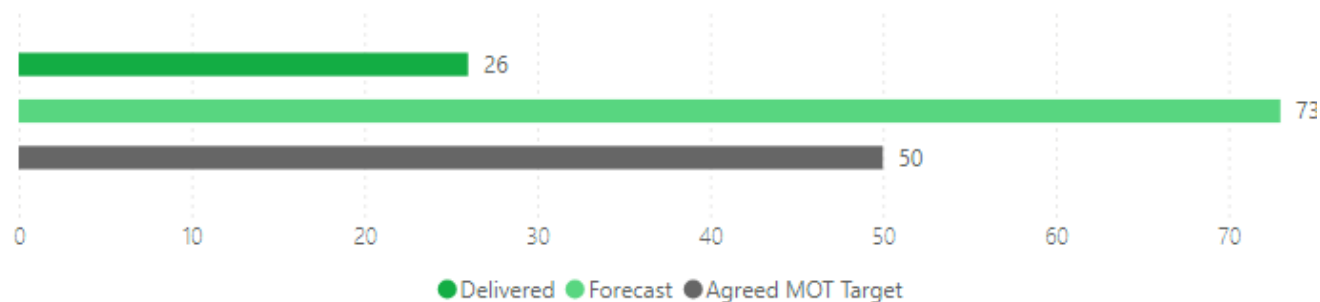


# Final programme outputs – school travel

More than **70 schools** will benefit from improved safety measures.

Making it safer for children to walk, bike or scoot to school and helping making the transport network more efficient during drop-off and pick-up

Schools

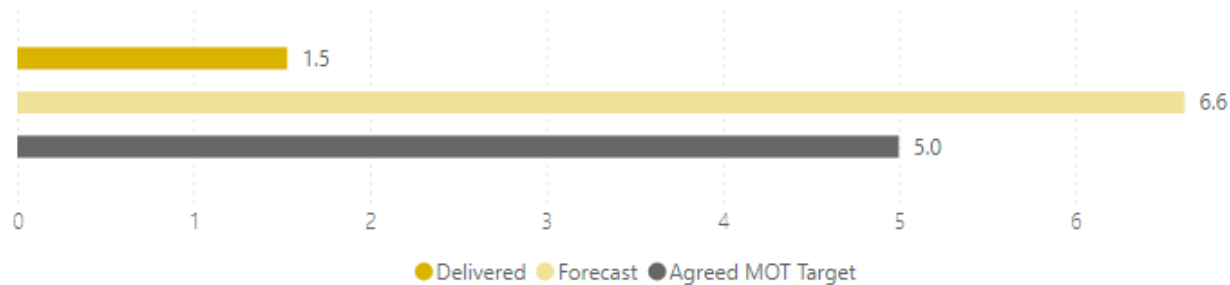


# Final programme outputs – bus priority lanes

More than **6km of bus priority lanes** are forecast to be delivered. 6.6km is the equivalent to the entire length of Dominion Road in Auckland.

These are ensuring improved reliability of the transport network on urban corridors where they're needed. For some cities this will be the first bus priority infrastructure they have.

Bus Priority Lanes (KM)





# Legacy of Transport Choices to date

- In larger cities we've help them deliver active and public transport projects **quicker**
- We've worked with Councils to develop **best practice** designs and build staff capability, helping to improve outcomes for future projects
- Helped councils have **meaningful conversations** about what their community wants
- More hands-on and involved Councils – a **collaborative** approach (learning from Streets for People)
- **Changed processes** to show that projects are able to be delivered quickly, internally we've highlighted where NZTA processes could be improved for quicker delivery

## Transport Choices:

*‘Delivering more transport options, quicker and cheaper’*

