

The Sausage or The Sizzle:

*how we talk about
reshaping streets*

“sausage”



“sausage”

es Events Recreation Have Your Say **Your Council** About Wellington

Your Council • > News • > Cycle & Walking Track Nearly Complete

rch News 🔍 N

Cycle & Walking Track Nearly Complete

5 December 2013

Wellington’s new five-kilometre walking and cycling track linking Tawa and Porirua is in its final stages of development and should be finished by March next year.

“sausage”

The image shows a screenshot of a council website. At the top, there is a navigation bar with five tabs: Services, Leisure & Culture, Our City, Your Council (which is highlighted in green), and an unlabeled tab. Below the navigation bar is a 'Listen' button with a play icon. On the left side, there is a vertical menu with the following items: About your Council, Awards and ceremonies, Council Meetings and Papers, Council Meetings Live & Schedule, Have your say, International Relations, News, Plans, publications and bylaws, Projects (highlighted in green), Civic Precinct redevelopment projects, Cycleways and shared paths (highlighted in green), Beltway Cycleway, and Eastern Bays Shared Path. The main content area on the right has a breadcrumb trail: 'You are here: Home > Your Council > Projects > Cycleways and shared paths > Wainuiomata Shared Path'. The main heading is 'Wainuiomata Shared Path', followed by a sub-heading: 'A new shared path connecting the wider Hutt Valley with Wainuiomata.' Below this is a section titled 'On this page:' with four links: 'What's this project about?', 'How the community benefits from the Shared Path Project', 'Where are we at?', and 'How can you find out more?'. The first link is expanded, showing the text: 'The completion of the Wainuiomata Hill Shared Path is a key project in providing a safe and integrated network for commuting and recreational purposes under the current strategy, [Walk and Cycle the Hutt 2014 – 2019](#).' The second paragraph states: 'The aim of the project is to provide a consistent, connected and safe shared path between the wider Hutt Valley and Wainuiomata for pedestrians and cyclists. In its present state the steep and winding 80kph road has no safe facility for cyclists and pedestrians.'

Services Leisure & Culture Our City **Your Council**

Listen

About your Council

Awards and ceremonies

Council Meetings and Papers

Council Meetings Live & Schedule

Have your say

International Relations

News

Plans, publications and bylaws

Projects

Civic Precinct redevelopment projects

Cycleways and shared paths

Beltway Cycleway

Eastern Bays Shared Path

You are here: [Home](#) > [Your Council](#) > [Projects](#) > [Cycleways and shared paths](#) > Wainuiomata Shared Path

Wainuiomata Shared Path

A new shared path connecting the wider Hutt Valley with Wainuiomata.

On this page:

- [What's this project about?](#)
- [How the community benefits from the Shared Path Project](#)
- [Where are we at?](#)
- [How can you find out more?](#)

What's this project about?

The completion of the Wainuiomata Hill Shared Path is a key project in providing a safe and integrated network for commuting and recreational purposes under the current strategy, [Walk and Cycle the Hutt 2014 – 2019](#).

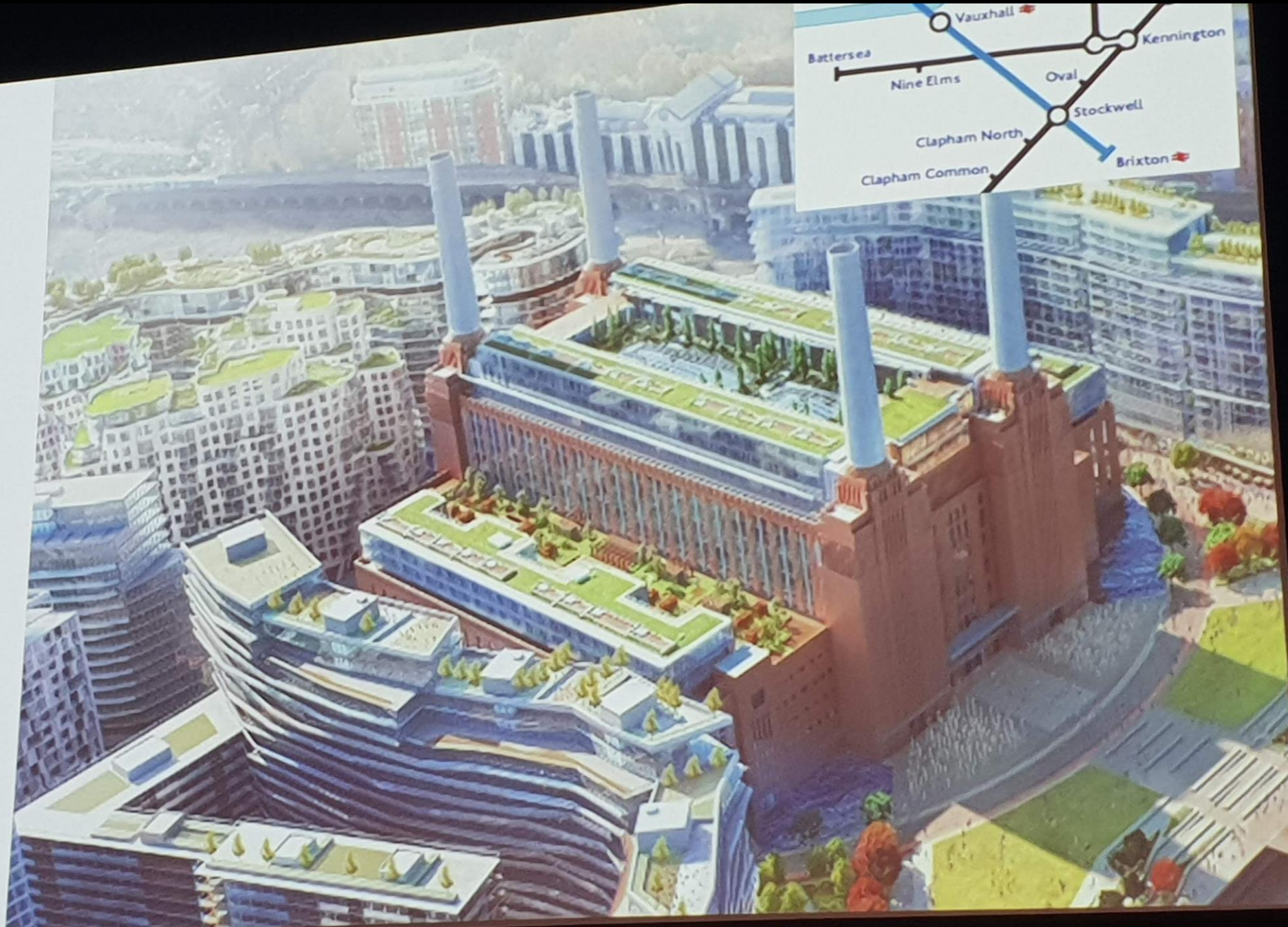
The aim of the project is to provide a consistent, connected and safe shared path between the wider Hutt Valley and Wainuiomata for pedestrians and cyclists. In its present state the steep and winding 80kph road has no safe facility for cyclists and pedestrians.

“sizzle”



“sizzle”

Starting from outcomes creates political support – and can also deliver external funding



“sizzle”



lights

music

neighbours

veges

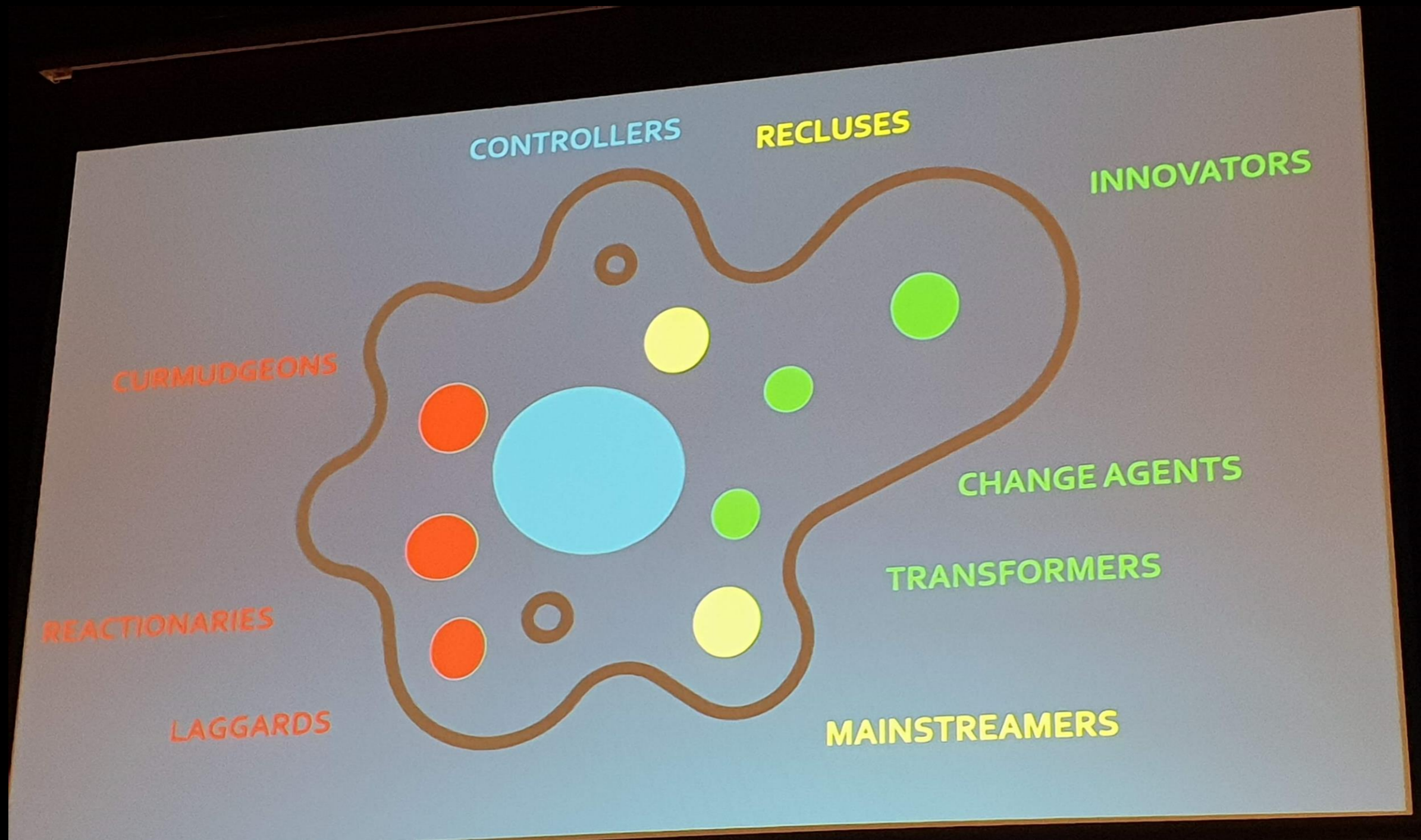
kebabs

sausages

BBQ & gas

plates

why is sausage-centric discourse bad?



why is sausage-centric discourse bad?



why do we do it?



why do we do it?



easy ways to talk better



easy ways to talk better



acknowledge



Simon Wilson: How dare Auckland Transport pit schoolkids against cyclists

22 Feb, 2019 5:00am

6 minutes



674

people given feedback

How would you rate the Newtown Connections area for people getting to/from:

- the city (weekday)
- the city (weekend)
- surrounding suburbs
- in/around the area

for people walking?



for people riding bikes?



for people in cars/on motorbikes?



for people using the bus?



The bigger the colour block, the higher it rates for that use.

take back to work



LET'S TALK

Isabella Cawthorn

confluence
consulting