

Connecting Auckland Communities

ENZ Transport Conference 2020
Christchurch 11 March
Session 1: Street Wars. A New Hope



Auckland – a collection of villages



Major projects are being delivered



New trains



Eastern Busway



City Rail Link



SH1 Upgrades

What's happening on Auckland's streets today?

People want more **say** on what happens to their neighbourhood



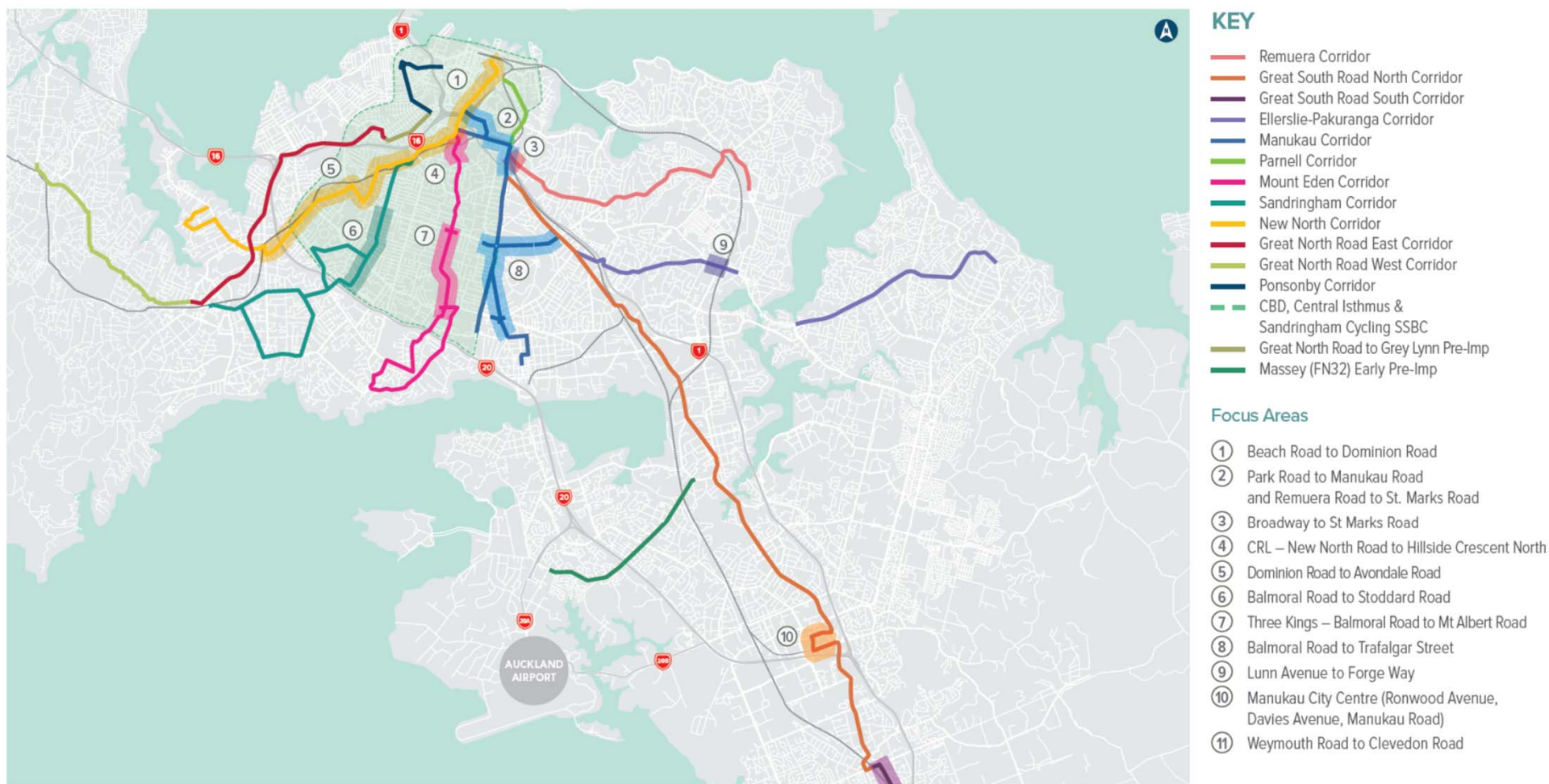
Patronage numbers on **buses** are **growing**

Cycle and scooter numbers are **growing**

Crashes for **vulnerable users** and vehicles is growing

Population growth and up-zoned land adjacent to main streets

Connecting Auckland Communities



Objectives



Promoting safety

Increasing mode choice

Healthier Streets

Providing opportunity for economic development

Reducing community isolation

Improving wellbeing.

A Fresh Approach to Delivering Integrated Transport Solutions

Changing how people can use their key streets means making bold choices now for the good of our community.

Auckland Transport has appointed three consortia, involving 18 companies, to work collaboratively to complete consultation, business cases and take through to construction

Collaboration and innovation are key to ensure efficiencies in investigation, option development and assessment, design and implementation are identified, shared and realised

Jacobs

flow
TRANSPORTATION SPECIALISTS



Isthmus.

eliga

aurecon



ATMC

PurpleShirt

JASMAX



Richard Paling Consulting



Resolve
GROUP

Coalesce Consulting

WARREN AND MAHONEY



Tonkin+Taylor



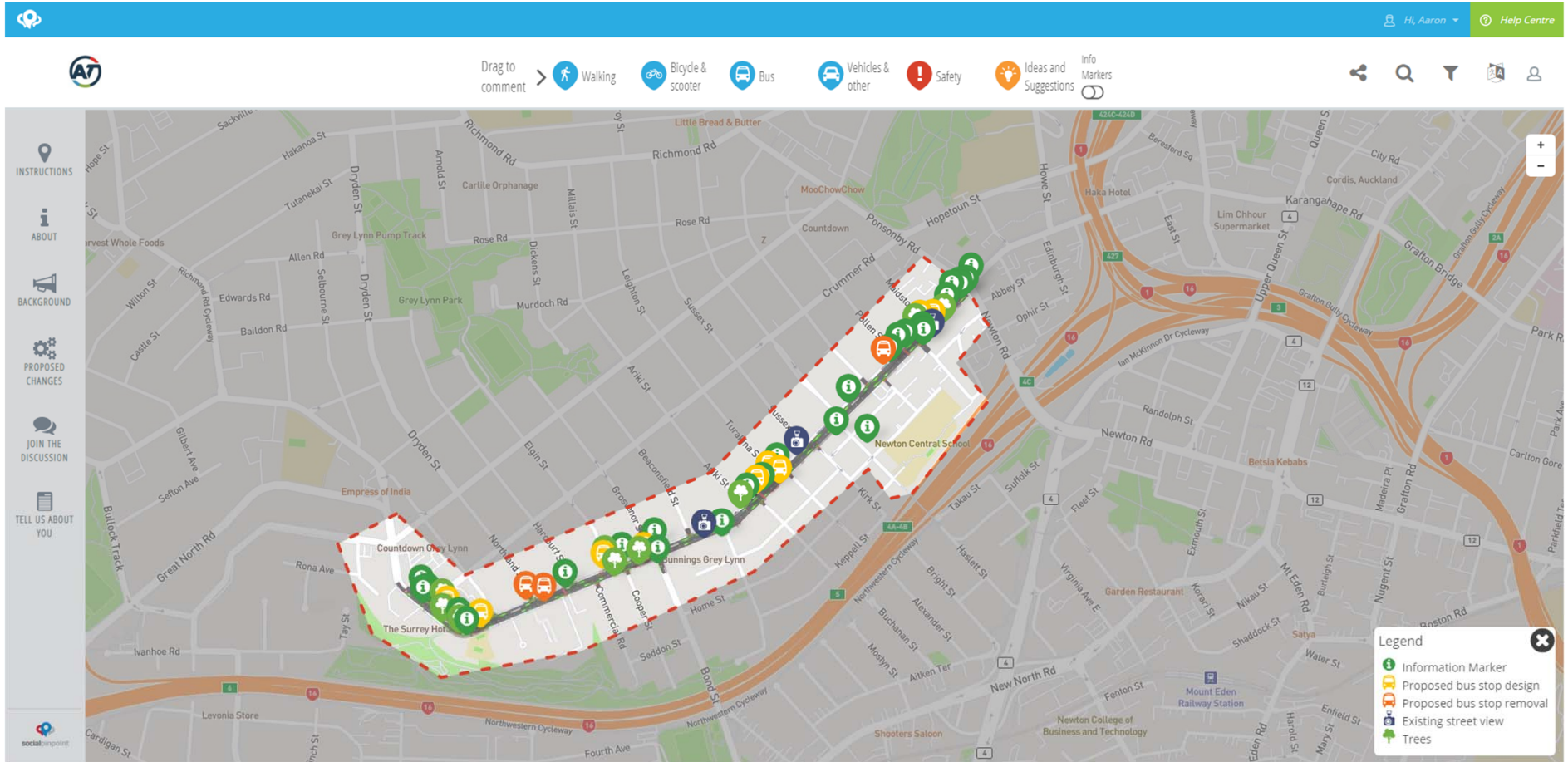


Programme Benefits

- Improved road safety outcomes and perceptions (35%)
- Improved customer experience and competitiveness of public transport (30%)
- Increased active transport mode share and participation for all ages, abilities and backgrounds (25%)
- Improved environmental and amenity outcomes for our communities (10%)



Conversations with the Community



Social Pinpoint

The screenshot displays the Social Pinpoint web application interface. At the top, there is a blue navigation bar with the AT logo on the left and user information 'Hi, Aaron' and a 'Help Centre' link on the right. Below the navigation bar is a horizontal menu with icons for various transport modes: Walking, Bicycle & scooter, Bus, Vehicles & other, Safety, Ideas and Suggestions, and Info Markers. The main content area is split into two parts. On the left, a 'DISCUSS' sidebar contains a text input field 'Start a discussion...', an email field 'aaron.rodriques@ghd.com', and a 'Reply' button. Below this is a yellow-bordered card titled 'Proposed new bus stop design' featuring a 3D architectural rendering of a bus stop and a '20 days ago' timestamp. On the right, a map shows a street layout with several information markers (green 'i' icons) and bus stop markers (orange bus icons). A white discussion overlay is positioned over the map, titled 'Proposed new bus stop design'. The text in the overlay reads: 'We're proposing a new bus stop design, with the cycle lane continuing uninterrupted behind the bus stop. This reduces the potential for accidents between cyclists, pedestrians and passengers getting on and off buses. Two buses will fit in 7 of the 8 proposed bus stops.' Below the text are buttons for 'View the discussion', 'Like', 'Dislike', and 'Zoom in'. A legend in the bottom right corner of the map area identifies the markers: Information Marker, Proposed bus stop design, Proposed bus stop removal, Existing street view, and Trees. The map also shows street names like Chapman St, Niven St, and Newton Rd, and nearby businesses like 'Club Sandwich Lunch and Cafe' and 'The Dog's Bollix'.

Summary

- Fresh approach to meeting the future transport needs of Auckland's communities
- Balance between throughput and safety of people using all modes with the aspirations and wellbeing of communities - requires integrated approach to planning, consultation and design
- Close collaboration between AT and 17 consultants resulting in sharing innovations and efficiencies through consistency of processes, analysis and documentation
- Meaningful engagement with the communities along the corridors focussed on ensuring communities aspirations are reflected in the outcomes
- Understanding community wellbeing through Human Centric design, Healthy Streets analysis and Sustainability outcome measurement

Thank you

