



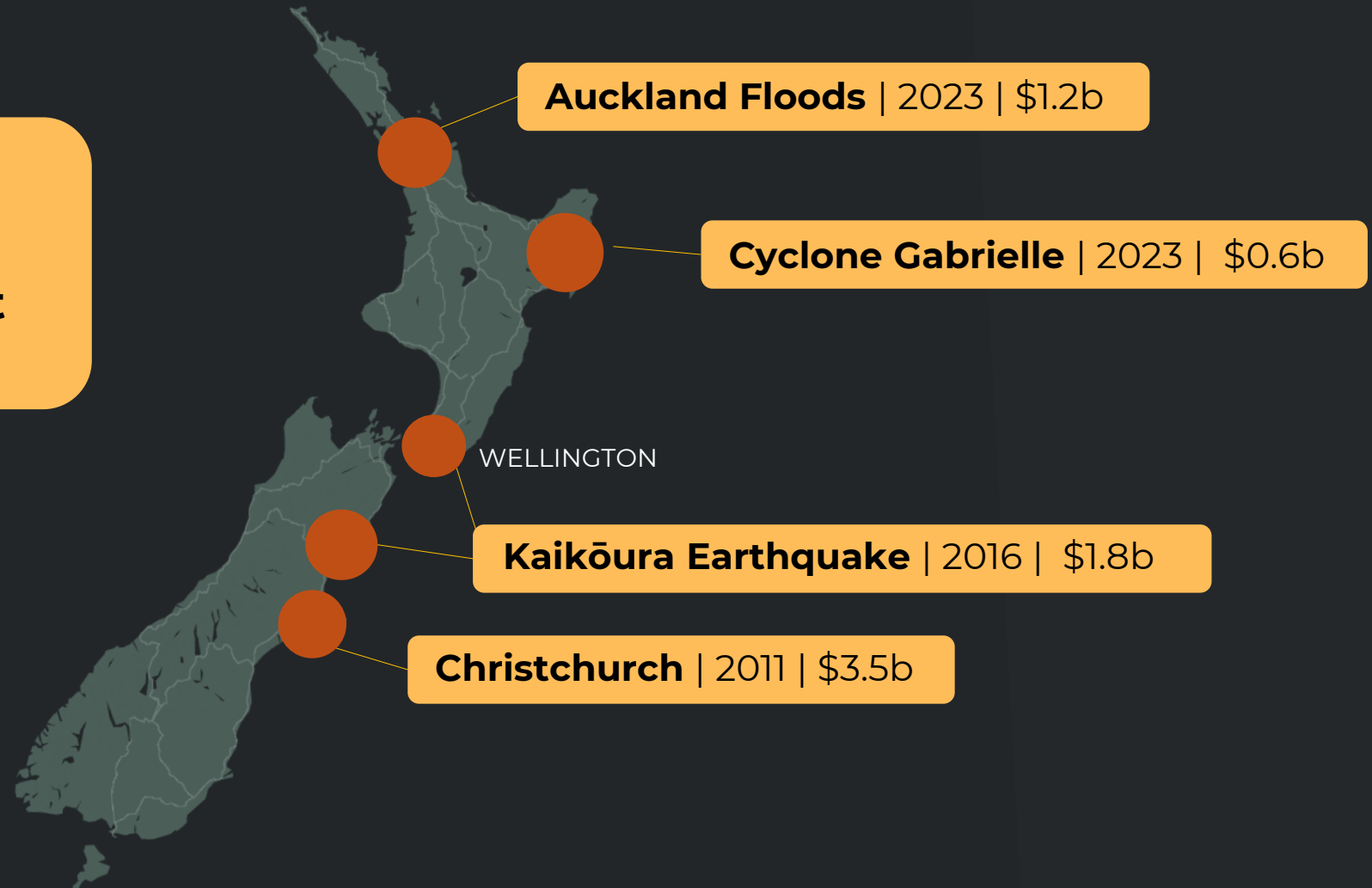
THE NATIONAL FORWARD WORKS VIEWER

Presented to the

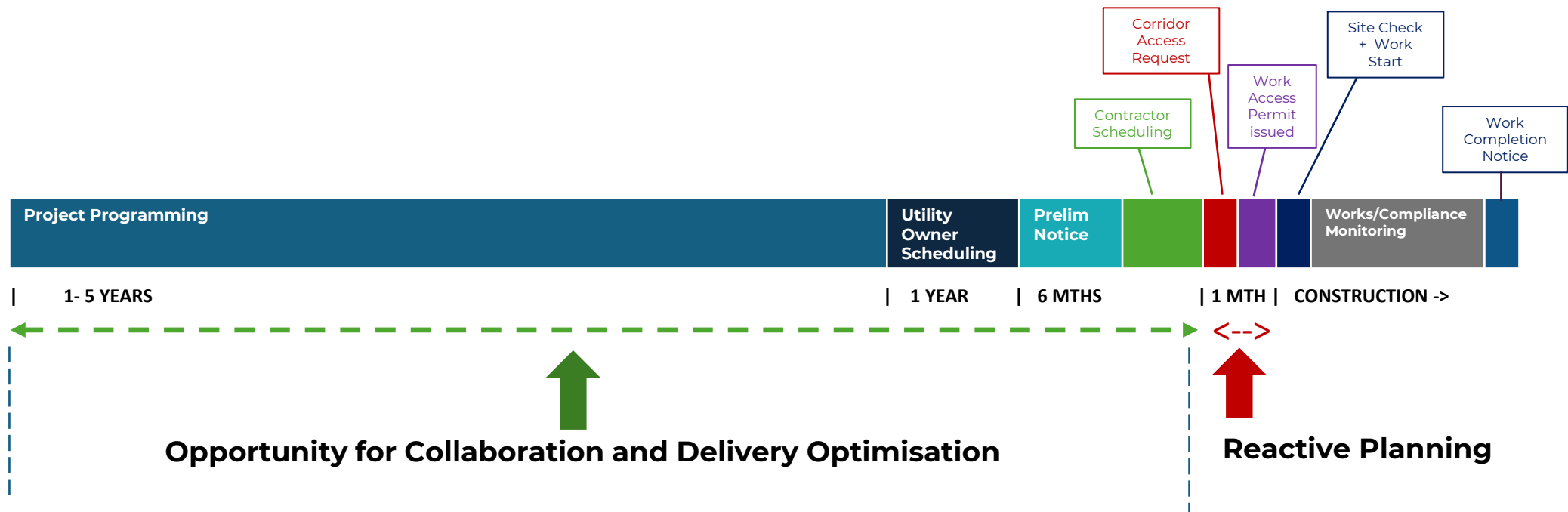


WHAT'S THE CHALLENGE?

+
**\$200 Billion National
Infrastructure Deficit**



Holistic coordination of planned works



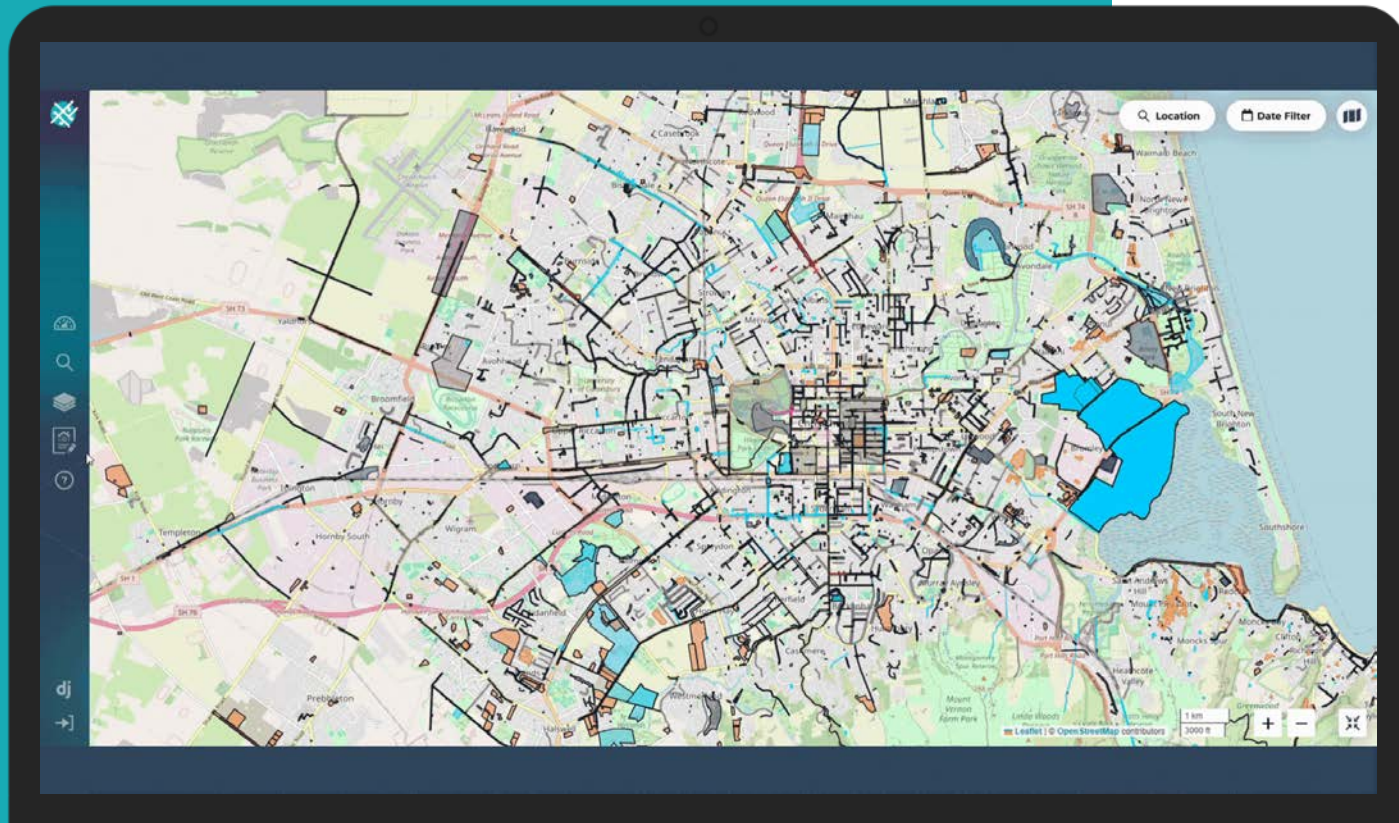
Moving the conversation from 'how do we avoid clashing' to 'how do we align our strategic investment decisions for better outcomes.'

"This is an exciting step change!"
- NZ Infrastructure Leader

The National Forward Works Viewer



A mapped repository, with hundreds of stakeholders' planned infrastructure projects, showing the who, what, where and when





20 ANCHOR SUBSCRIBING RCAs, INCLUDING:



And users from over **260** organisations
around New Zealand

WHAT'S THE INNOVATION?



Technology -
federating data



Business
model



Ownership
model

Transport **Disruption Assessment**

Station Rd Maurice Rd intersection pedestrian improvements

Summary

Project summary

Edit

Organisation Auckland Transport
Org reference 20101200
Type Horizontal Construction
Infrastructure Transport
State In Progress

Start date 03/07/2025
End date 27/04/2028

Details
Pedestrian improvements at intersection of Station Rd and Maurice Rd

Transport impacts
No impacts

Dinesh
09
@at.govt.nz

First published 13/10/2025 11:20
Last updated 15/12/2025 08:51
FWV project ID 2035560
Project visibility All FWV users

6 1 5

Zoom to project

Transport Disruption Assessment

These are the transport network layers that your project intersects with, as determined by the RCA region.

Your project **Station Rd Maurice Rd intersection pedestrian improvements** is intersecting with **5** transport data layers

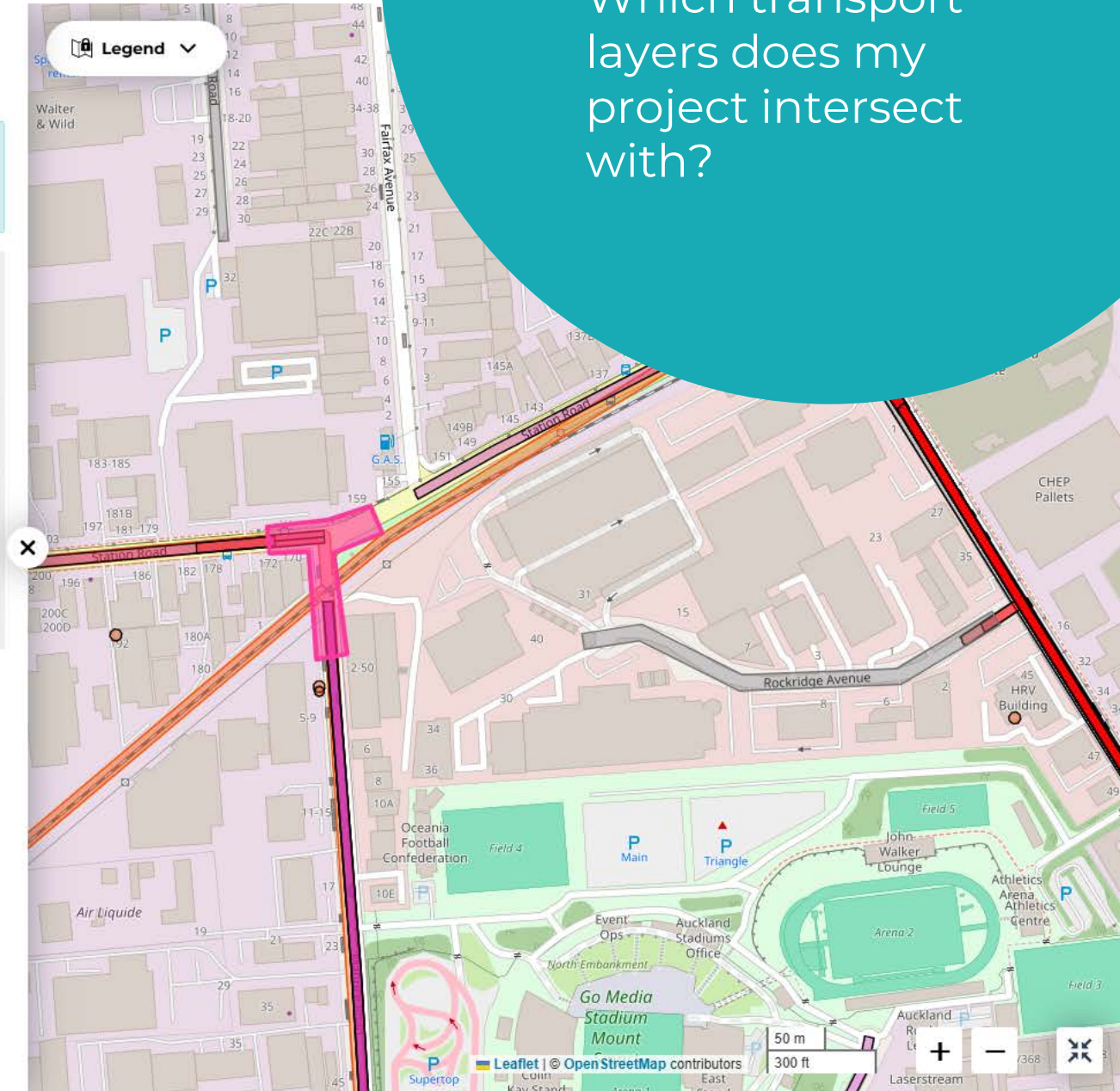
Arterial Routes

Overweight Routes

Bus Stops

Bus Routes

School Bus Routes



Which transport layers does my project intersect with?

FEEDBACK ON OUR TOOLS...

“Invaluable”

– LINZ on the NFWV

“In my view [sharing project and asset data] saves time, costs and keeps projects moving... The potential for efficiency gains and reduced costs is enormous.”

- Infrastructure Minister Chris Bishop

“I have more confidence that we know what’s happening in our corridor.”

– NPDC Transport Network Operations Lead on NFWV

“That reduction in stakeholder frustration is really significant.”

- Road Access & Coordination Manager,
Auckland Transport

National Forward Works Viewer

**“COMMON GOOD TECHNOLOGY.
RESILIENCE THROUGH COLLABORATION”**

admin@digitalbuiltaotearoa.org.nz

In partnership with
OPEN PLAN

