

Are we nearly there yet?

**New Zealand's progress toward eliminating child poverty
Haratua/May 2022**

**Glenis Philip-Barbara
Assistant Māori Commissioner for Children**

Ko Operū te maunga...ko Reporua te Marae



MANAAKITIA Ā TĀTOU TAMARIKI
Children's
Commissioner

So on child poverty, are we nearly there yet?

YES and NO

Child Poverty Target: 10%

Result in 2021: 11%

Result for Pākehā children

- 9%



Result for **Māori**, **Pacific** & **Disabled** children

- 20%
- 25%
- 20%

Takeout:

When we generalise data for ALL we MASK the disparities in this country. We need to look more closely at disparity to eliminate it. This is one way we can tackle the racism and ableism embedded in our systems driving these results

The Vision:

**Making NZ the best place in the world to
be a child**

Our current systems are racist & ableist by design

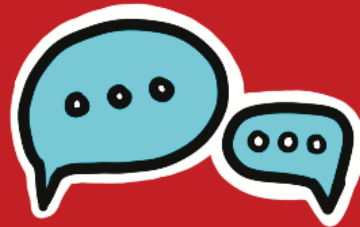
It is the water we all swim in

The good news is – **We can change them**

Advocating for equity



Advocating for the elimination of racism in the public sector & **recognising and tackling ableism**



Advocating for by Māori for Māori approaches to addressing chronic system failure for Māori. This approach can work for disabled and other people too.



Advocating for community led solutions powered by Government investment to solve poverty related problems

Achieving Equity in Health Outcomes 2018 paper

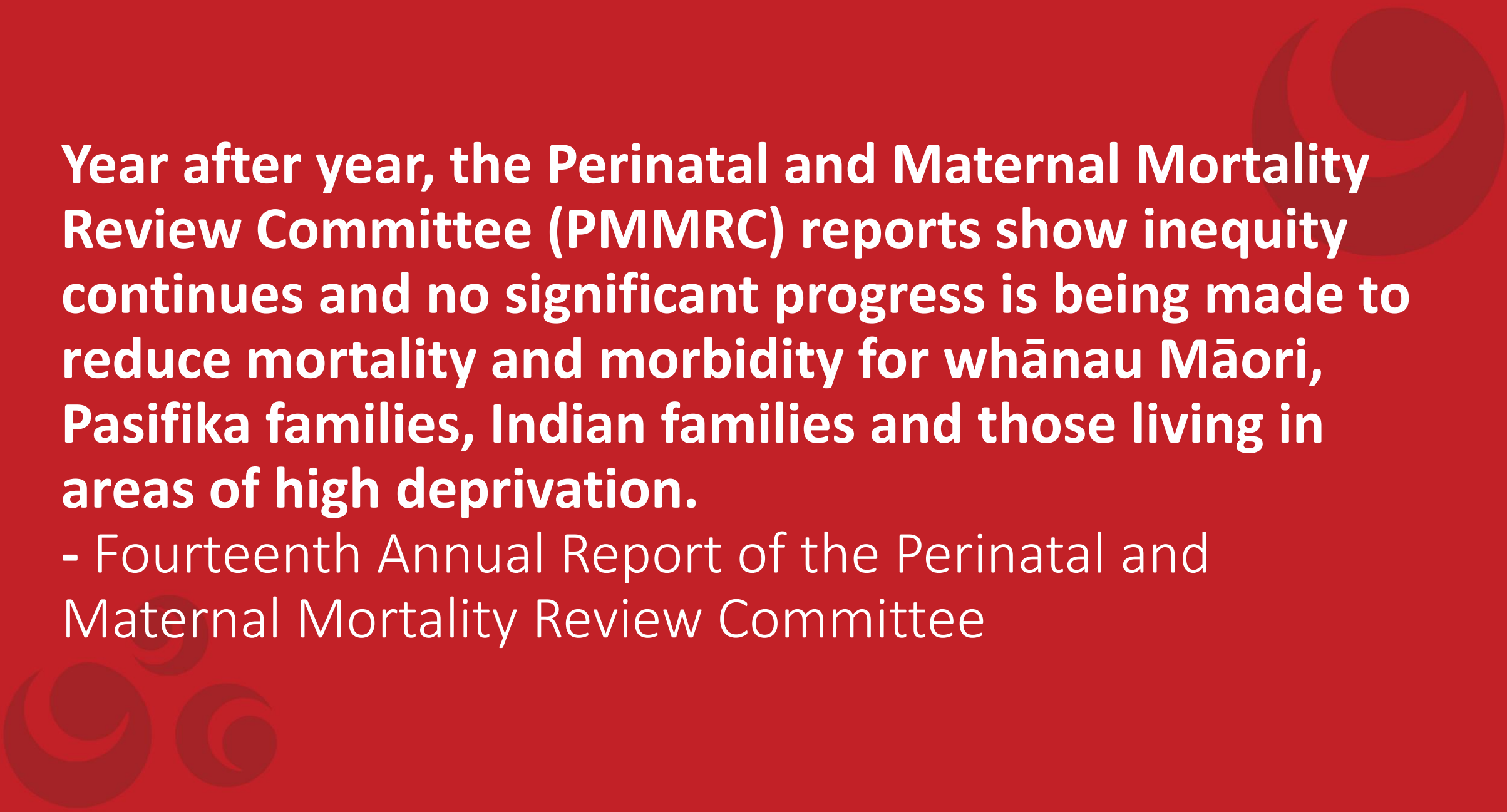
Despite efforts inequitable health outcomes remain

The economic cost of NOT addressing health equity is high and far reaching

Te Tiriti o Waitangi guarantees equity by recognising health as a taonga

NZ has many of the necessary conditions to achieve equitable health outcomes

The health sector should not hesitate to draw on its collective resources to resolve differences in health equity. Govt has given the mandate for a pro-equity agenda.



Year after year, the Perinatal and Maternal Mortality Review Committee (PMMRC) reports show inequity continues and no significant progress is being made to reduce mortality and morbidity for whānau Māori, Pasifika families, Indian families and those living in areas of high deprivation.

- Fourteenth Annual Report of the Perinatal and Maternal Mortality Review Committee



So, as we reflect on our own practice; what is it that we're doing or not doing that contributes to inequity? What is it in the system that is allowing this to happen?

“Be a good ancestor.”

– Rangatahi at Race Unity Speech Awards

Questions?

Pātai??

