

Corridor Management in Action:



Coordinating Smarter to Build Resilient Cities

Presenter:

Amanda Wolfaardt
Wellington City Council

Absolutely Positively
Wellington City Council
Me Heke Ki Pōneke

The Shift in Corridor Management

Key Challenges

- Managing high demand transport networks
- Moving from reactive to proactive city planning
- Conflicting workloads
- Underground Assets

Forward Works Planning

- One central shared map
- Identify clashes and opportunities
- Coordinating:
 - Infrastructure projects & Utility upgrades
 - Street Improvements & upcoming developments
 - Events
- Benefits
 - Reduce project clashes
 - Save time and money
 - Supports collaboration
 - Improves traffic and corridor management

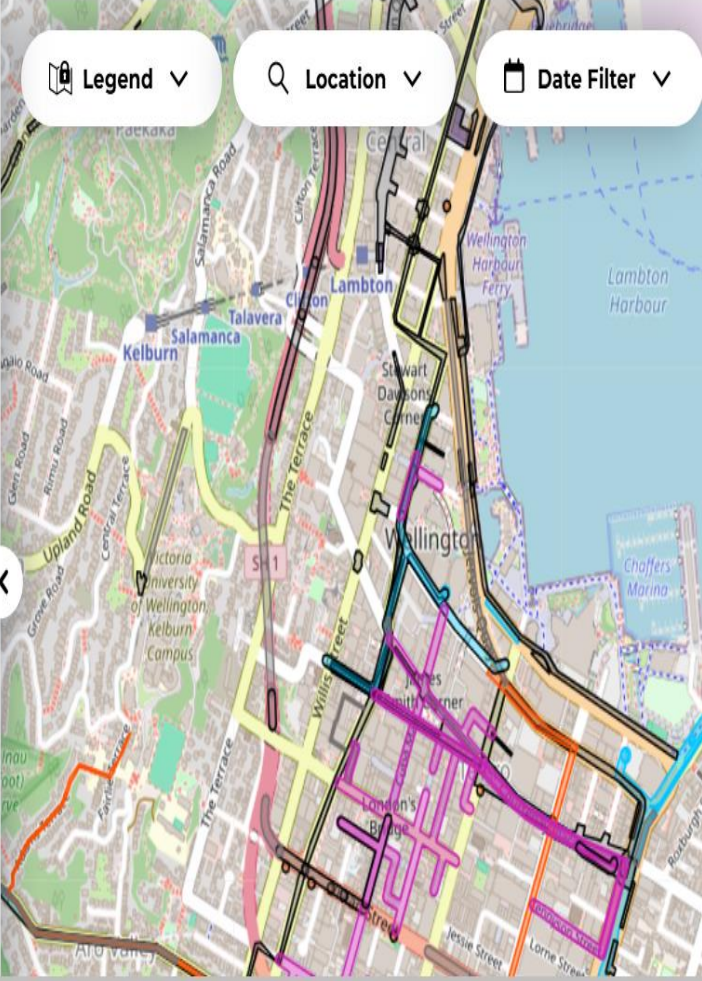
Projects/stages in area (2)

#2172461 Opening of Te Mataphihi

Organisation Wellington City Council
Org Reference 219
Type Planned Events - Public Events
Start date 14/03/2026
End date 14/03/2026
State Planned
EVENT - Opening of Te Mataphihi.

#2097691 Victoria St Rising Main renewal

Organisation Wellington Water Ltd
Org Reference D6DCE4C9-F8BD-4074-BBDB-CD495C6C5AD9
Type Horizontal - Three Waters
Start date 15/06/2025
End date 15/12/2027
State In Progress



Underground Asset Register

Reduced Disruption

→ enables “dig once”, fewer repeat excavations

Smarter Coordination

→ better sequencing across utilities

Supports Super Closures

→ reveals underground conflicts early



Underground Asset Register

- **Site Observations**

- Improved safety for field staff
- reduces rework and construction delays

- **Better Data Quality**

- continuous updates from real-world findings

- **Improved Safety**

- → fewer asset strikes, fewer emergency closures

Utility Assets & Records

Wrongly recorded details
Water rising main encased in concrete slab at shallow depth. Expected this to be underneath the concrete with a layer of sand.

Image Gallery

The water pipe is the copper pipe (this is after repairs). The brick below the water is the top of the archway of the 1100dia stormwater main. The yellow painted pipes at the front carry power, coms and an unknown. The green pipe, shown below, is a bank of coms cables with the water behind it.

The image shows a screenshot of a utility asset register interface. On the left, there is a vertical sidebar labeled 'Utility Assets & Records'. The main content area is divided into two parts. The top part features a title 'Wrongly recorded details' in an orange box, followed by a paragraph of text describing a water rising main encased in a concrete slab. Below this is an 'Image Gallery' section containing a photograph of a trench with a copper pipe and a green corrugated pipe. The bottom part of the interface shows an aerial view of a city street with several utility asset markers. These markers are represented by colored circles (yellow, green, blue) and lines, with depth labels in meters (55.9 m, 66.9 m, 83.0 m, 29.4 m) indicating the depth of the assets. A pink circle with a white 'X' is also visible on the map.

Network Activity Planning

- **Better coordination**

→ across all utilities and internal teams

- **Reduced Disruption & delays**

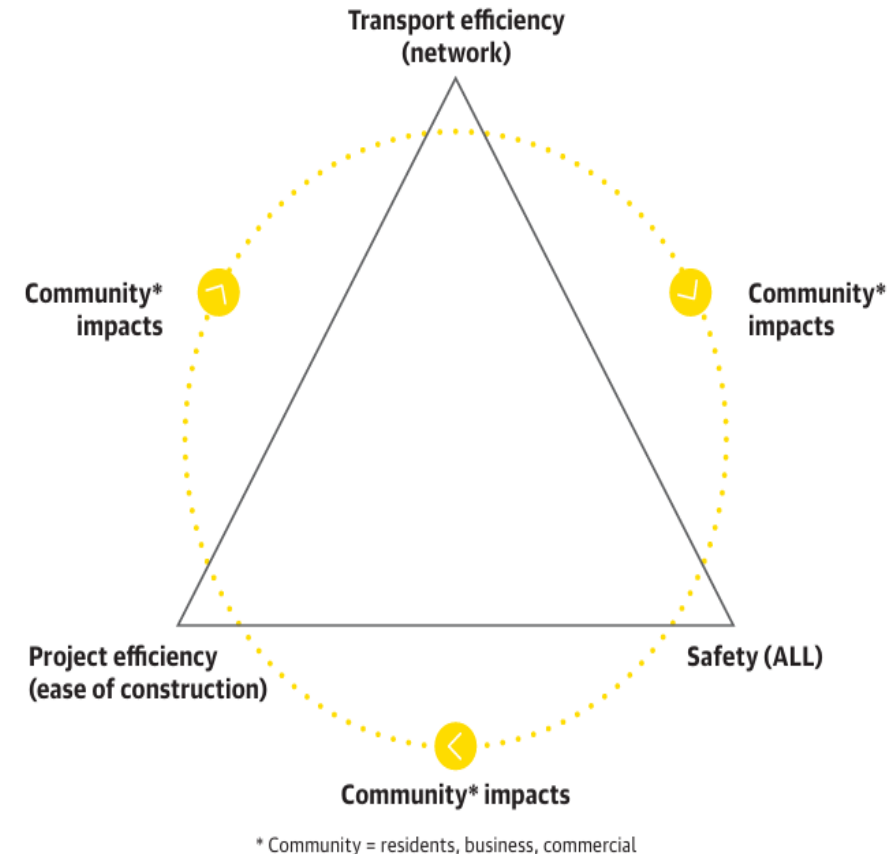
→ Combining work sites and proactive conflict resolution

- **Improved decision making**

→ using tools like FWV & UAR

- **Stronger network**

→ clear communication and expectation and sharing information



Super Closures - Lambton Quay 2025

Purpose and Scope

→ Combining 12 work sites

Timeline and management

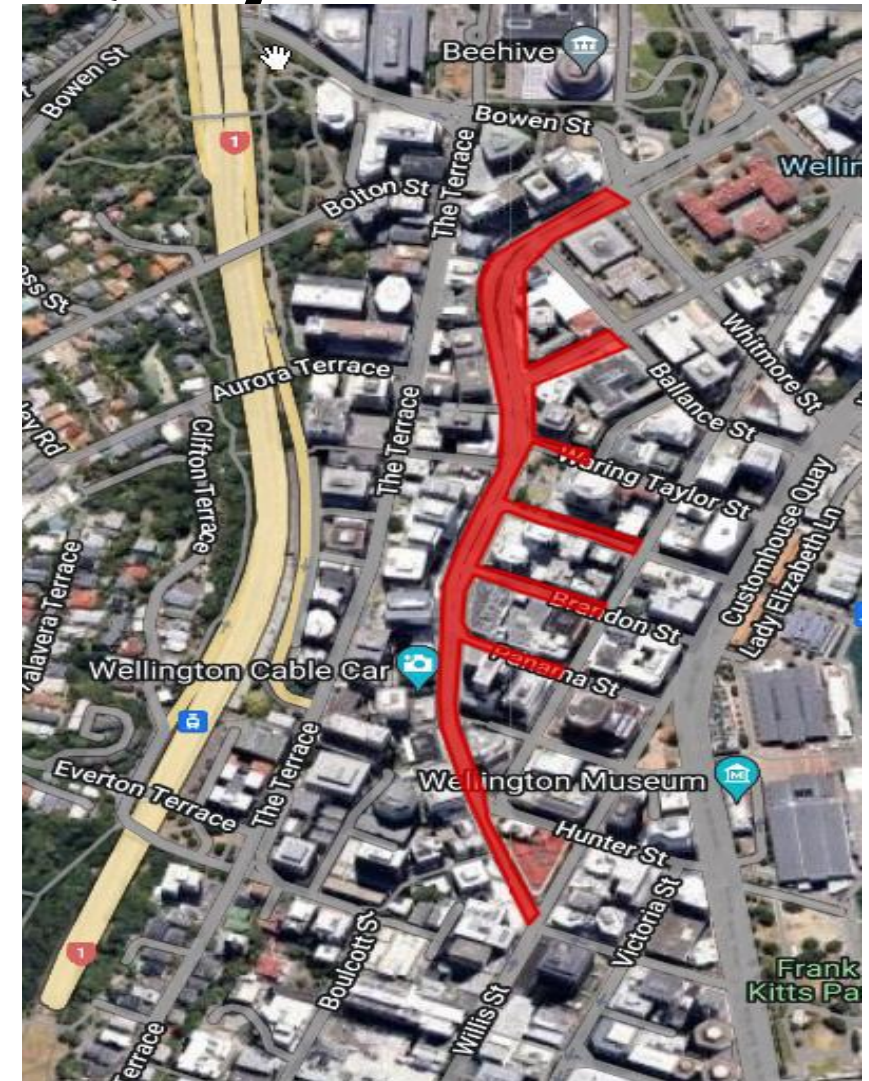
→ 5th of January 2025 – 9th of January 2026
4 nights and 3 days

Goals and Deliverables

→ shortest time frame, less disruption

Outcome

→ minimal disruption, high efficiency, well managed corridor



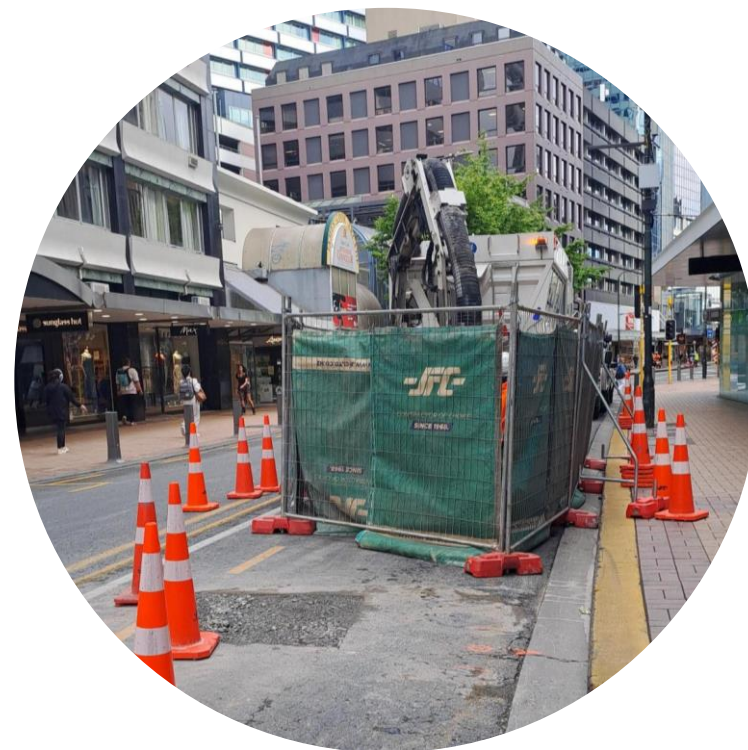
Lambton Quay 2025



Tree trimming



Dig outs
Resurfacing
Utility Maintenance



Investigation works

Super Closures - Ghuznee Street 2026

Purpose and Scope

→ Combining 7 work sites

Timeline and management

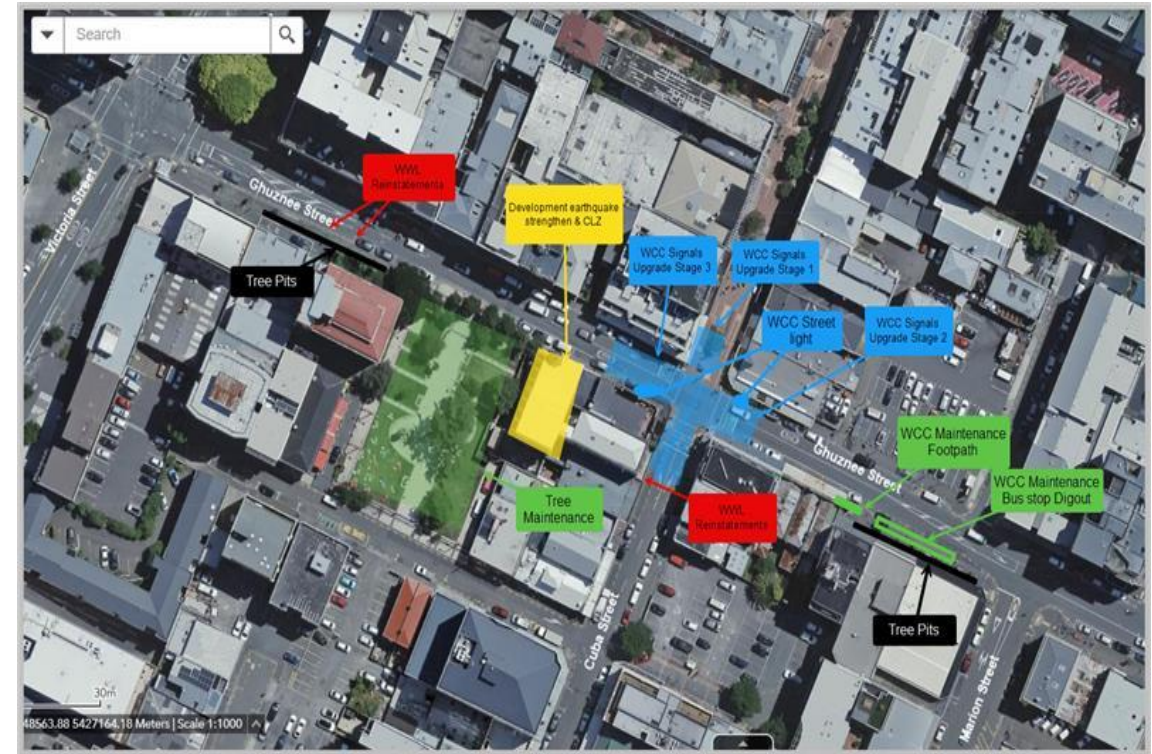
→ 5th of January 2026 – 27th of January 2026-23 days

Goals and Deliverables

→ dig once approach, well communicated closure

Outcome

→ successful delivery, improved safety for crews, consistent communication



Ghuznee Street 2026



Tree pit installation

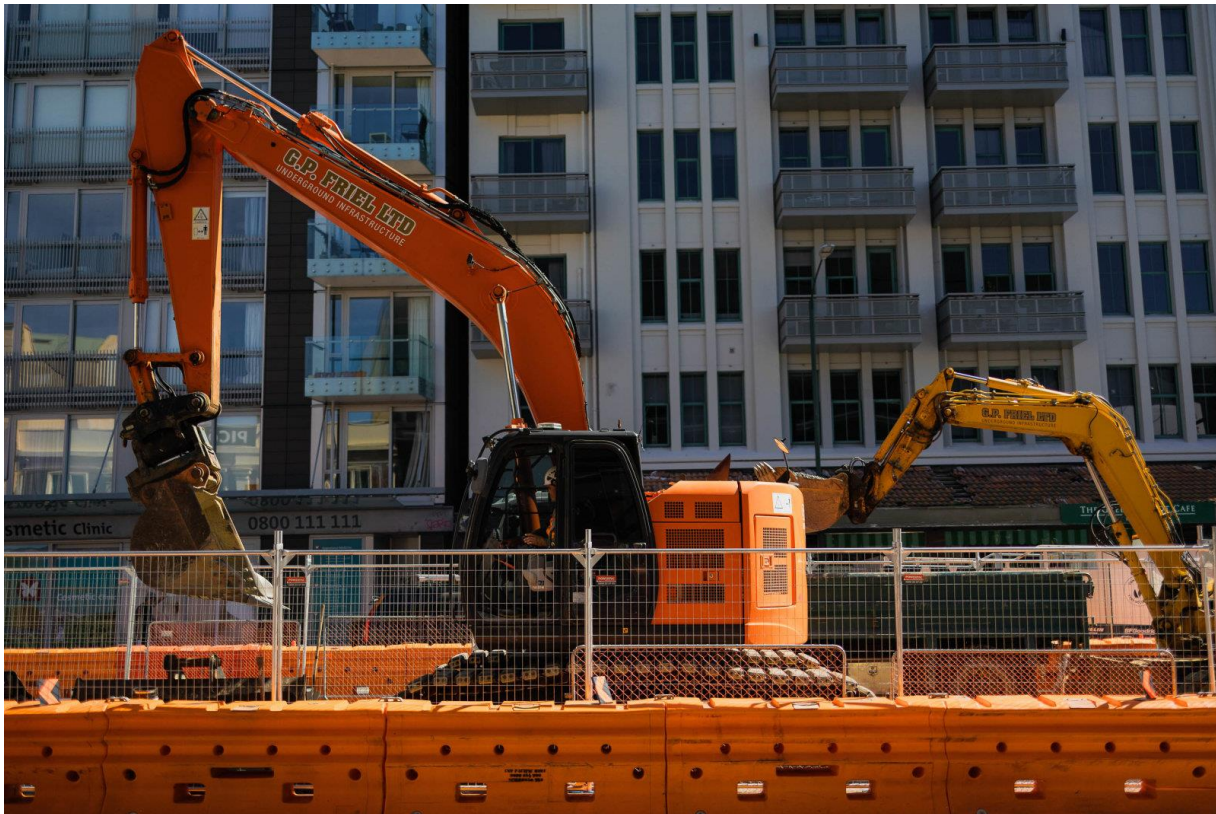


Dig outs
Footpath maintenance



Signal upgrades
Utility Maintenance

Shaping Wellington`s future with



✦ Smart, Data-Led Planning

🔧 Modern, Innovative Tools

🤝 Strong Collaboration Across the Network

Together, We Create a Future-Ready City

Thank you

