



“Then”

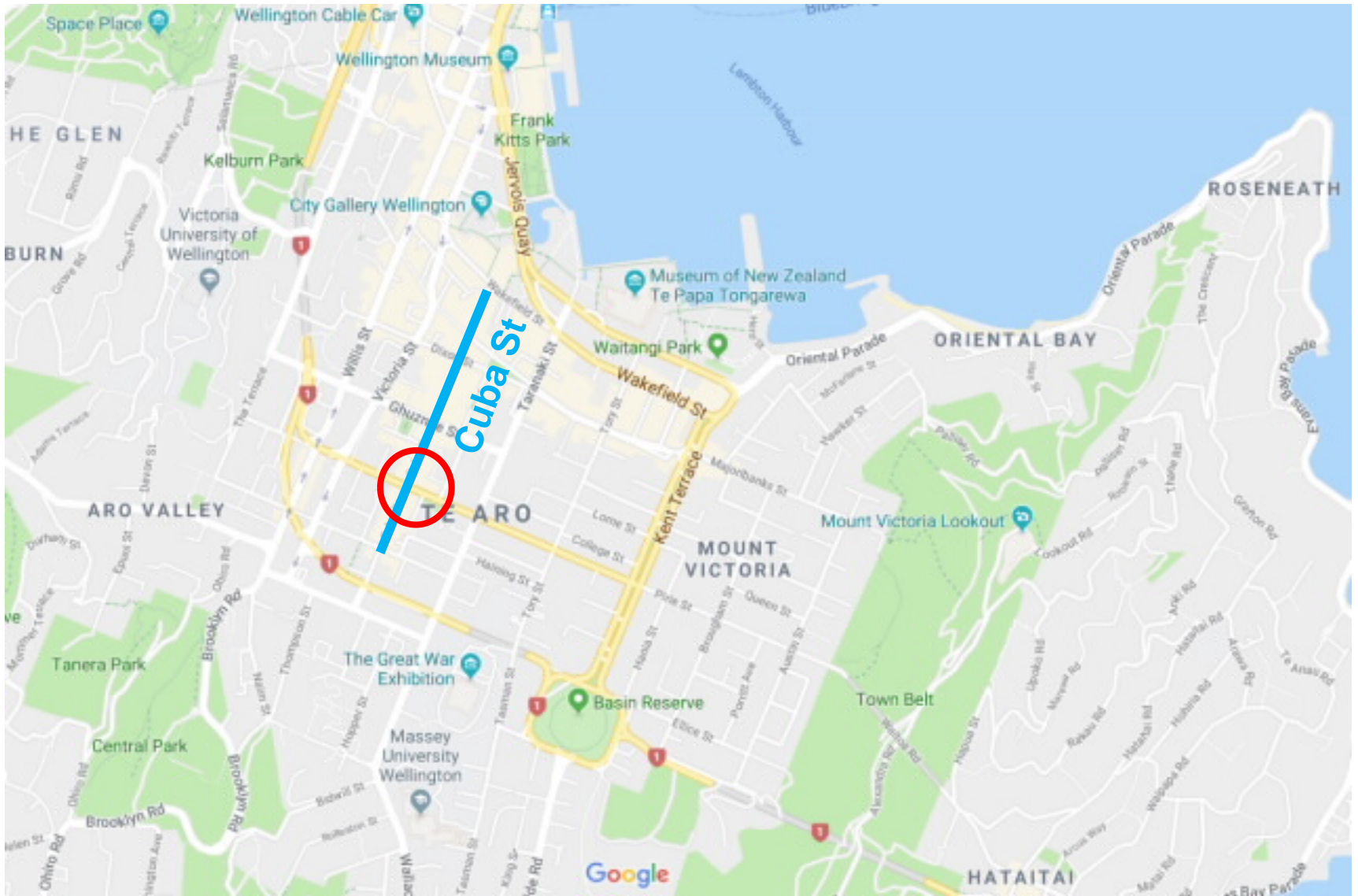
# Road Space Allocation – Through the Lens

David Huang    Transport Engineer/ Planner

21 March 2018

**JACOBS**

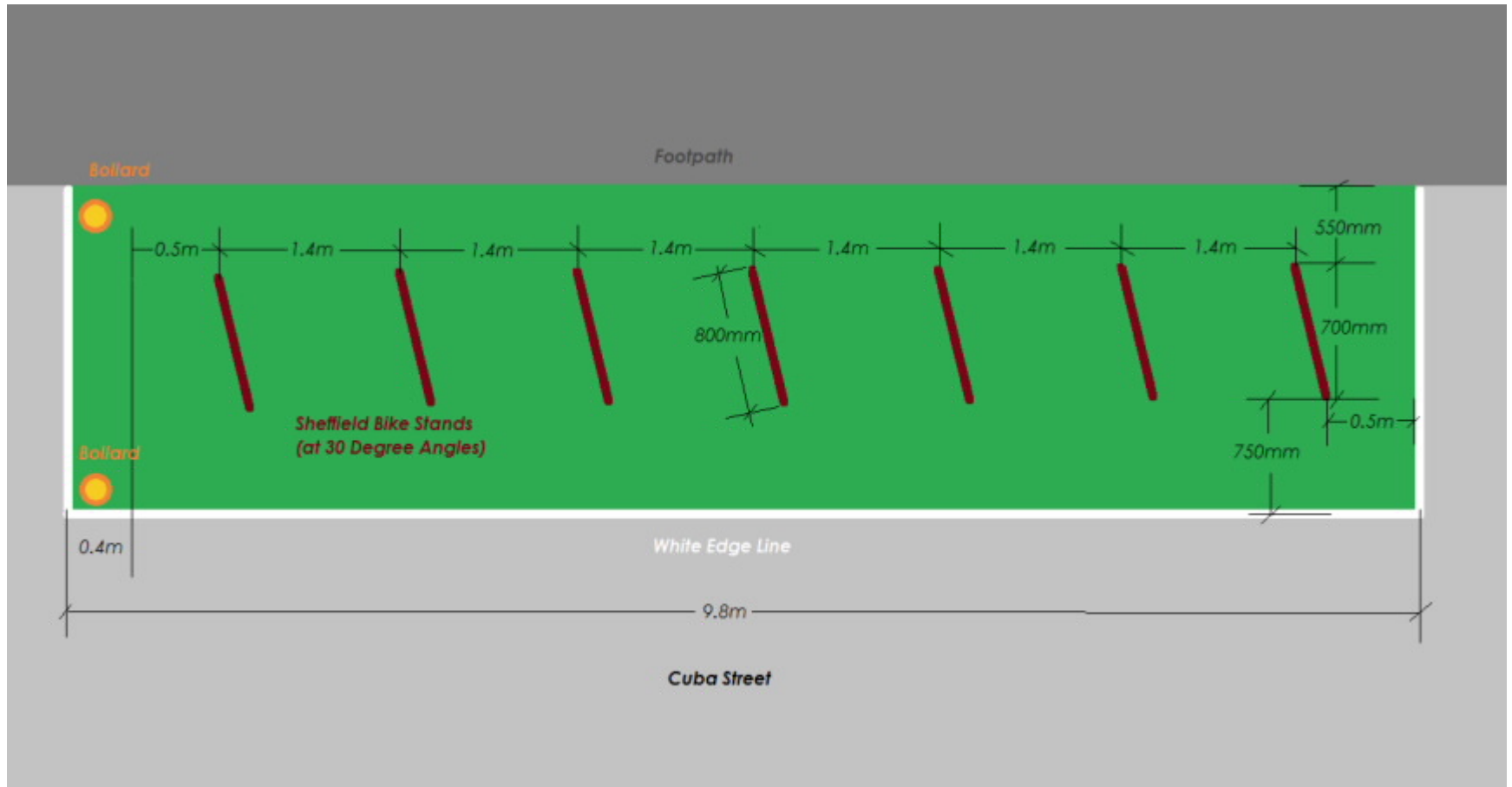
[www.jacobs.com](http://www.jacobs.com) | worldwide



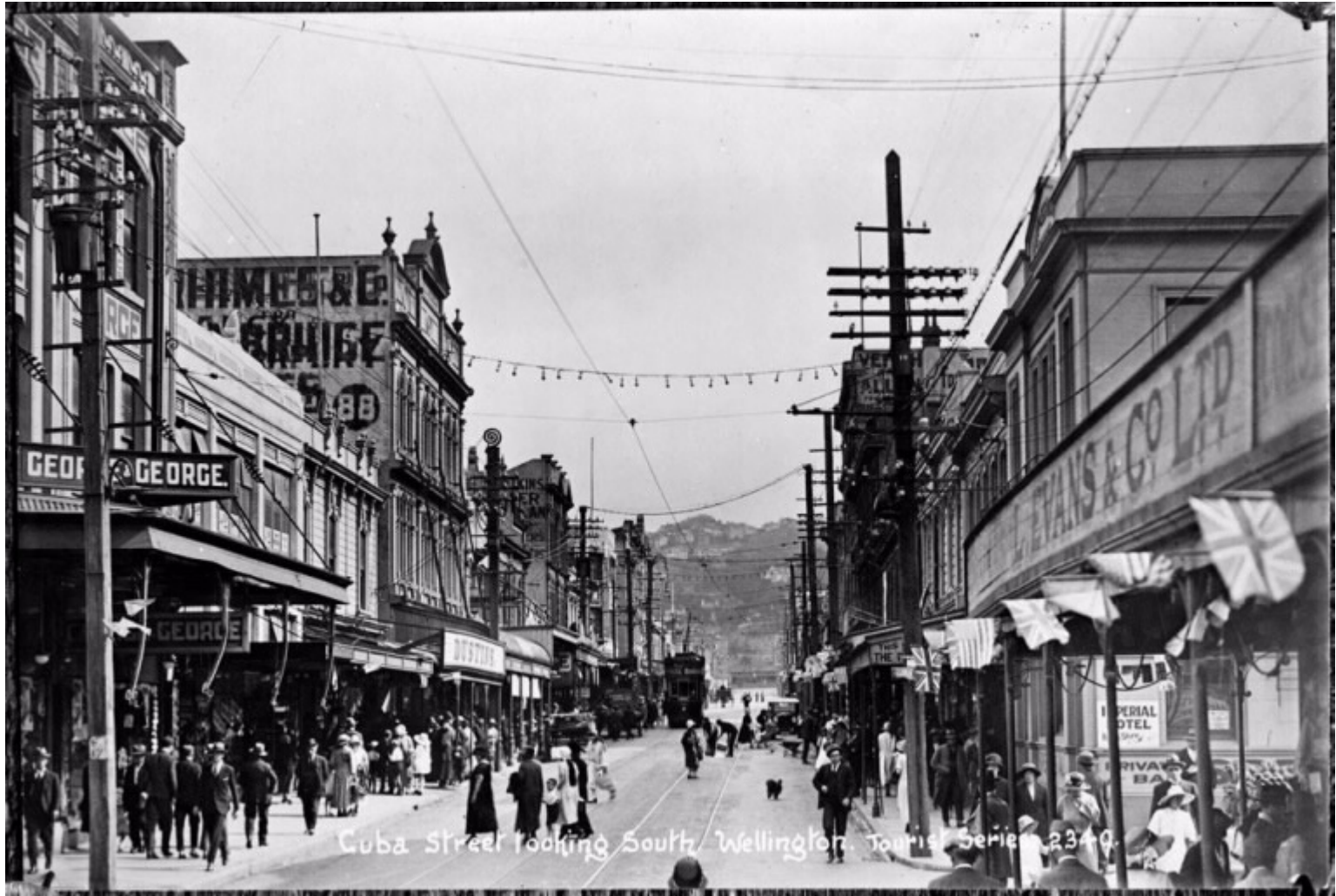








“**Outrageous!** You can’t touch our car parks. Bike parking should always stay on the footpath. I’ve never in my life seen anything more **stupid** than this! This never existed in Wellington and I will make sure it will never do.”



Cuba Street looking South, Wellington, Tourist Series 2340.























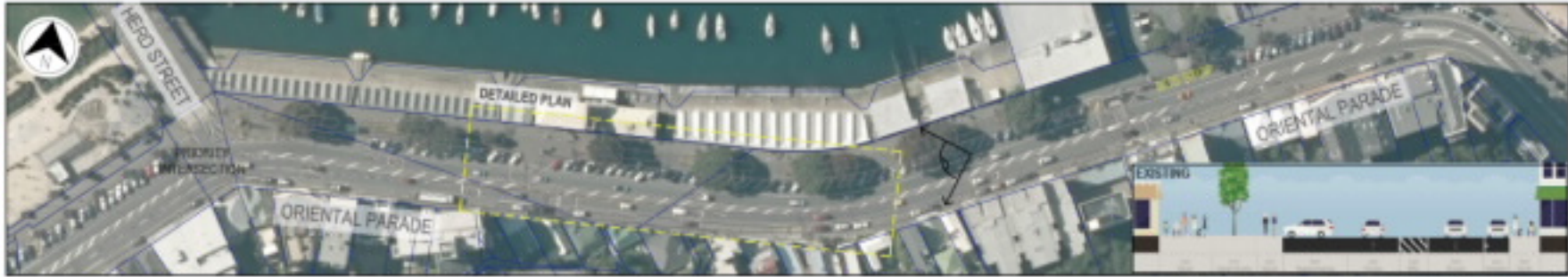


# ORIENTAL PARADE

## HERD STREET TO FREYBERG POOL

Developed by Proximity  
Wellington City Council  
© 2023 Jacobs

EXISTING ROAD LAYOUT



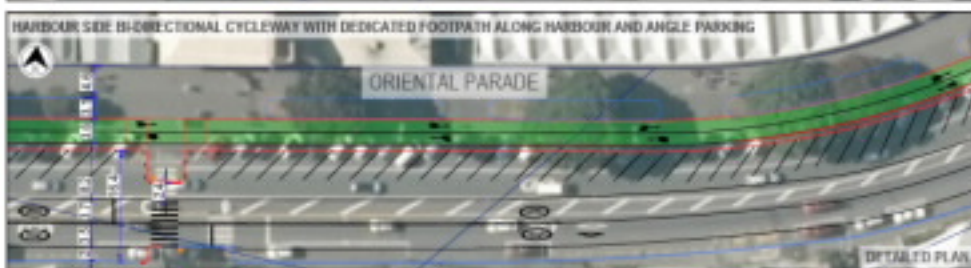
OPTION 9



OPTION 9.1



OPTION 10





**Bully boy**  
**Actor Tim Roth on violence**  
 Culture B5

**YOUR PLATE**  
**UberEats launches in capital**  
 Business A10

**WILDLIFE TIME**  
**On safari in Africa**  
 Life



**THE DOMINION POST**

# Residents fear cycleway repeat

**AMBER-LEIGH WOOLF**

A cycleway along Wellington's Oriental Bay could halve the parking spaces in one area, as residents caution the council against an Island Bay cycleway repeat.

Oriental Pde is earmarked for the first leg of a Wellington City Council cycleway masterplan to connect the capital's eastern suburbs to the central city.

The council said the project would ease pressure on the shared path which, at peak times, had more than 300 pedestrians and 200 cyclists.

But residents and businesses are concerned about the impact on parking spaces, and questioned why it needed to change.

"You've got one shot at something and if it goes wrong, it's expensive," Oriental Bay Residents Association president Andy Thomson said.

The Island Bay cycleway sparked controversy when it cut parking in 2016, and the council had pursued consultation on four new design options to mitigate its effect.

It would be a costly revamp, and had polarised a community, Thomson said. "Obviously, we want to avoid that if we can."

In December, the council revealed potential options for a cycleway along Oriental Pde from Herd St to Freyberg Pool.

There were 65 angle parks in the project's area. Converting angle parks to parallel would slash spaces to 33. That would affect all

## Oriental Bay cycleway

A proposed Oriental Bay cycleway has caused some concern from residents and nearby businesses.



kinds of users, Thomson said.

"There needs to be an option with less impact on parking and less impact on through traffic."

The association was stepping in before the council made plans that were final, he said.

He saw only a few cyclists each

day, and said he did not want to see the parade's hospitality, parks and safety compromised for them.

But council engagement officer Bernarr Alexander said peak times meant hundreds of cyclists and pedestrians were sharing one narrow section.

"These numbers are only set to increase with the popularity of Wellington as a tourist destination and the expected increase in population."

Alexander said nothing was decided, and options would go out to the community for feedback.

Jaque Wong, acting cafe manager at Bernie's On The Bay, said if carparks were lost it would definitely have an impact on business.

People would generally park and grab a quick coffee, she said.

Wellington Hospitality Group

chief executive Jamie Williams, also the owner of Coene's Bar & Eatery in the Royal Port Nicholson Yacht Club building, said he was not sure why the council would change the road now.

"People have been working here for the last 15 to 20 years with the current setup, so if it's not broken, don't fix it."

This week, Thomson would present an informal submission to councillors from the association, saying the council's first report on the project raised more questions than answers.

The council's intention was to continue the cycleway further on the parade, it said. Parking times of 10 hours would also be affected.

The project should be complete by early 2019, allowing for two periods of public consultation.

council review, design and safety audit, and construction, Alexander said.

Costs were dependent on the final approved design option.

About one-third of the funding would be provided by central government, one-third from the New Zealand Transport Agency and a third from the council, he said.

There would be public open days at the ASB Sports Centre today from 4pm and on Saturday from 10am for the public to look at the options for the Eastern Suburbs projects.

The Oriental Pde project would not be discussed at the events because of the ongoing discussions with the community, Alexander said. Public open days for the cycleway would be held during October.

Waka and haka



















## Ponsonby, Auckland 1971

(Photograph by Marti Friedlander. Auckland Art Gallery Toi o T māki.)









Corner of Riddiford/Rintoul Streets, Newtown, Wellington.  
Circa 1909-1911

(Credit: National Library)





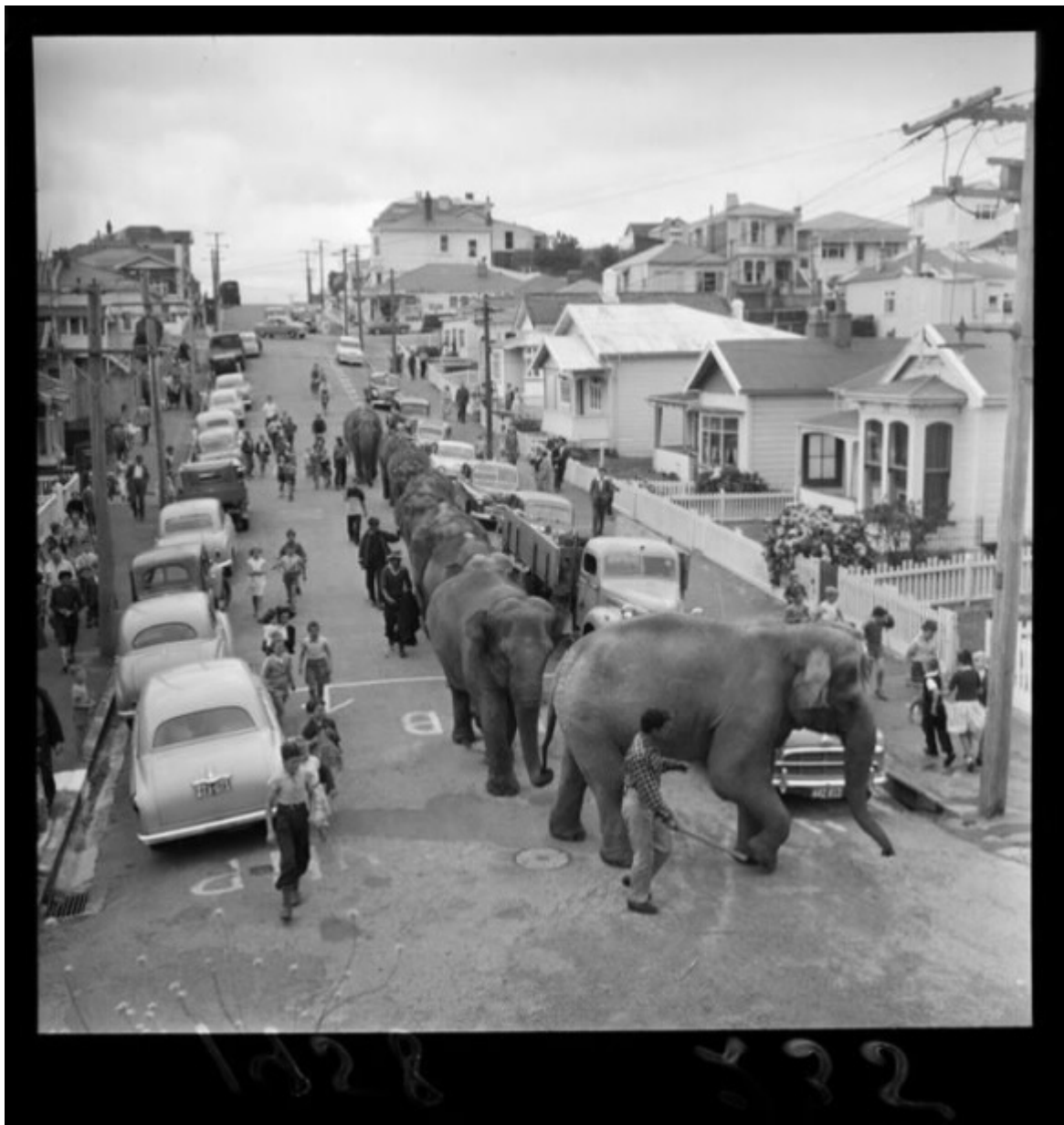
Corner of High/Colombo/Hereford Streets, Christchurch.  
Early 1950's

(Source: unknown)



Tamaki Drive, Auckland.

Early 1970's (Source: Sir George Grey Special Collections, Auckland Libraries)



Hall Street, Newtown, Wellington. 1958

(Source: Alexander Turnbull Library, Wellington)



# Thank you.

Keep Baby SAFE with  
a "Lull-A-Baby" Car Hammock



\* Baby constantly visible; rear view vision not impaired.

**SAFEST, MOST COMFORTABLE CAR BED  
EVER MADE**

**FITS ANY HARDTOP CAR  
ONE-MINUTE INSTALLATION**

RETAILS FOR ONLY  
**\$ 6<sup>95</sup>**

YOU CAN PURCHASE A "LULL-A-BABY" CAR HAM-  
MOCK FROM YOUR LOCAL DEALER OR PURCHASE  
IT AT 518 Lighthouse Avenue, Monterey, California

