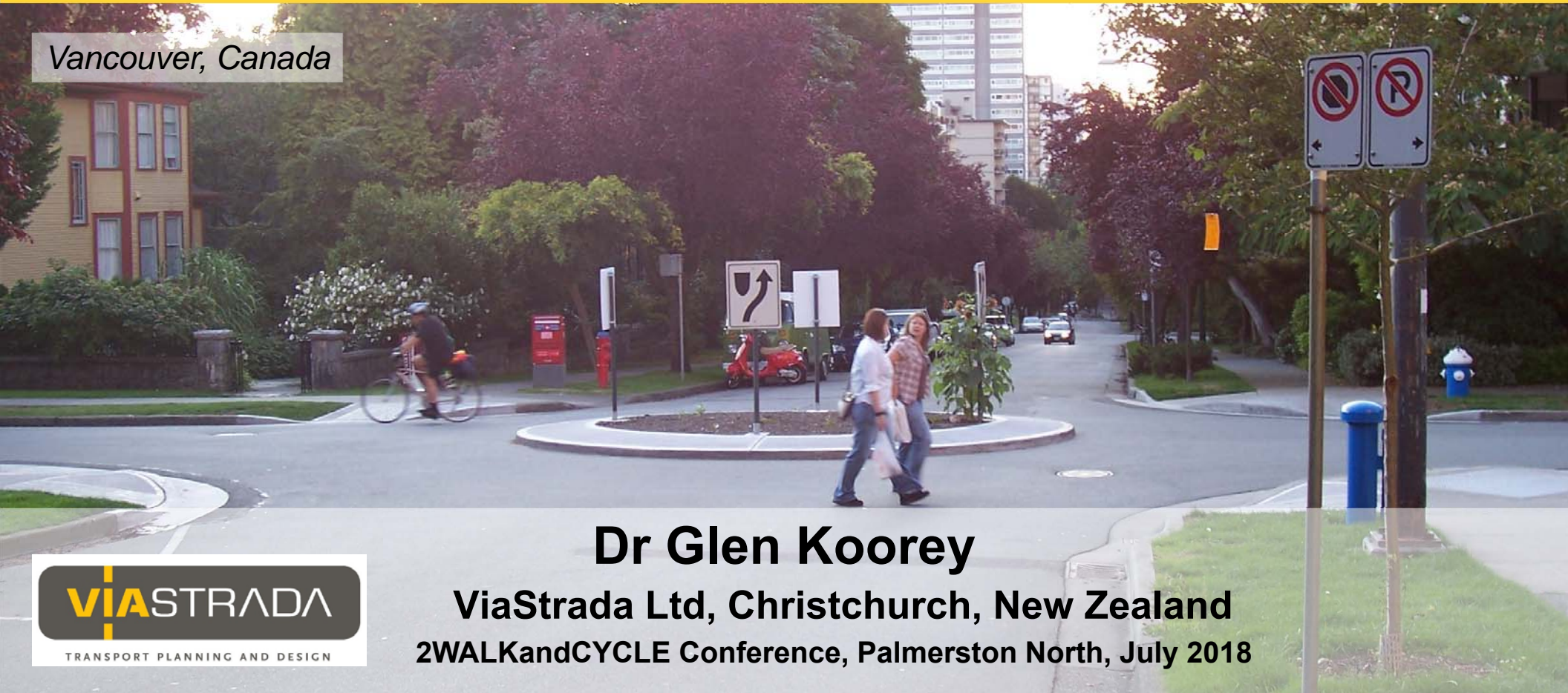


# Neighbourhood Greenways – the missing piece of the active network puzzle

*Vancouver, Canada*



**Dr Glen Koorey**

**ViaStrada Ltd, Christchurch, New Zealand**  
**2WALKandCYCLE Conference, Palmerston North, July 2018**





# NZ: So we're currently doing a lot of this...



Dunedin



Auckland



Tauranga



Wellington



Christchurch



What we're not doing yet is a lot of this...



*Utrecht, Netherlands*

# What is a Neighbourhood Greenway?

- Lots of different names for them →
- All part of a 'family friendly' walking/cycling network

*The best cycle routes  
without having any cycleways...*



- Neighbourhood Greenways
- Bicycle Boulevards
- Local Street Bikeways
- Quietways
- Bicycle Streets
- *Fietsstraaten* (NL)
- *Fahrradstraßen* (GER)
- Neighbor Ways
- Local Paths
- Quiet Streets
- Parkways
- EasyStreets, etc, etc...



# Key Elements of Neighbourhood Greenways

- **Lower speed** limits along route (30-40km/h)
- Intersection controls that **slow/divert** traffic
- Facilities to assist **crossing** busy roads
- Comprehensive **signage & markings**



Vancouver, Canada

*Where necessary, short lengths of pathway or cycle track to help “join the dots”*

# Low Speeds

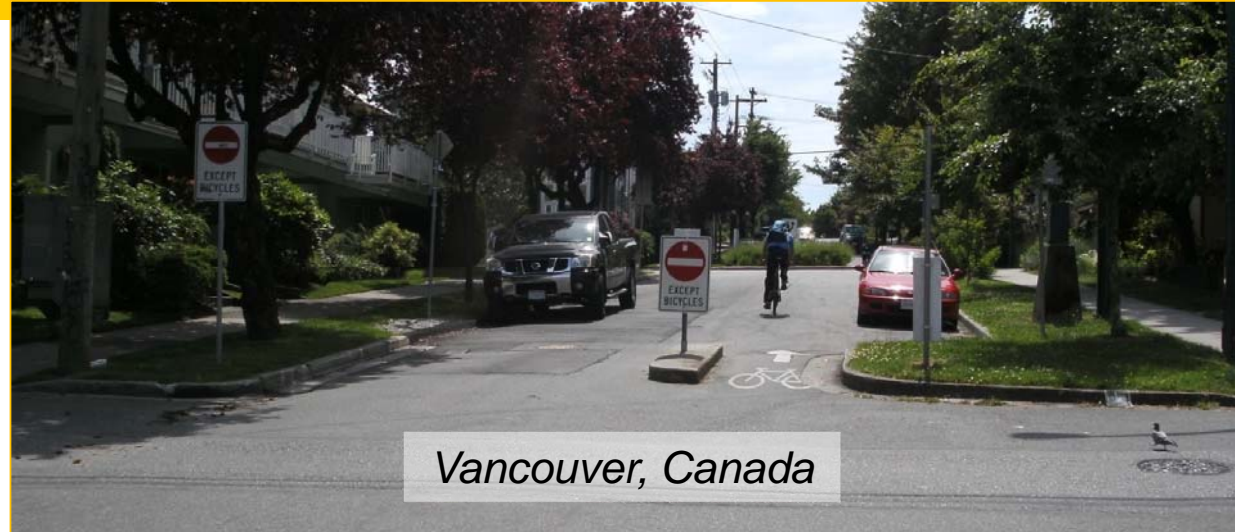
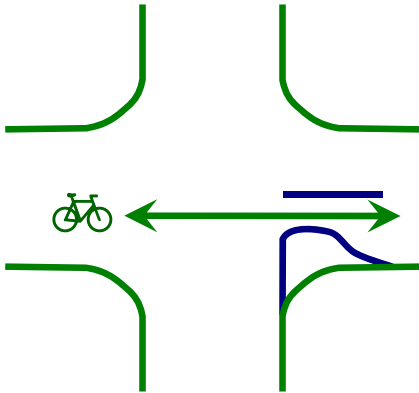
- May need physical devices to slow down or restrict traffic (humps, islands)





# Traffic Restrictions

- One-way entrances or exits but two-way bikes



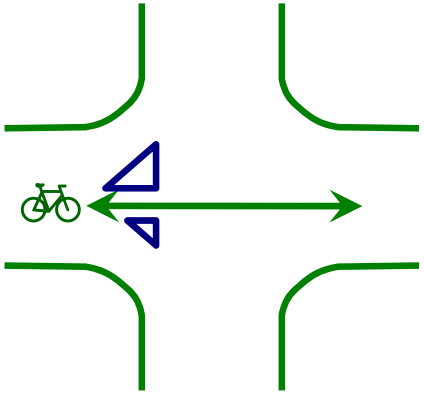
*Vancouver, Canada*



*Eugene OR, US*

# Traffic Restrictions

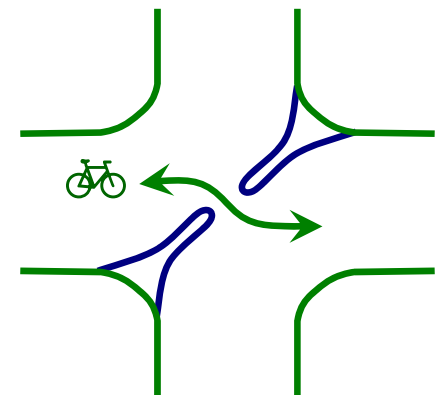
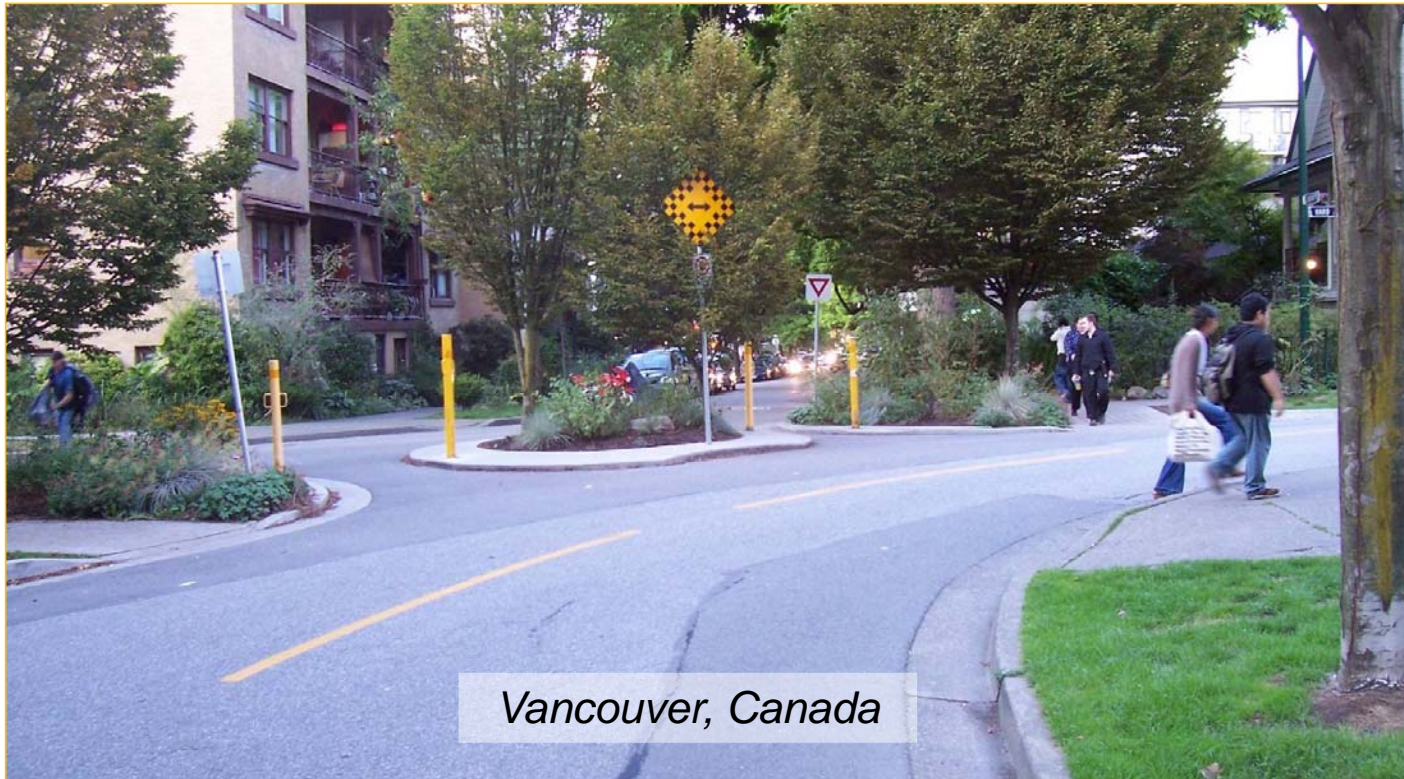
cont'd



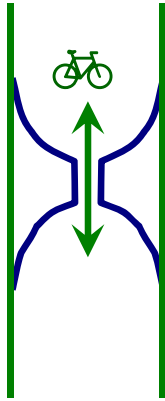


# Pedestrian/Bike Bypasses at Intersections

- Ideally aiming for <2000 vehs/day



# Mid-block Ped'n/Bike Bypasses



*Munich, Germany*



*Vancouver, Canada*

- Don't have to be expensive treatments (esp. at first)



# Busy Road Crossings

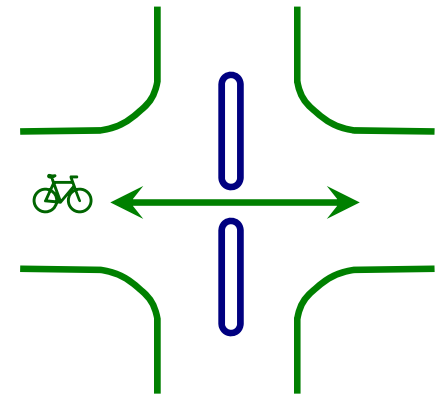
- Restrict through-traffic as well as assist crossings



*Portland OR, US*

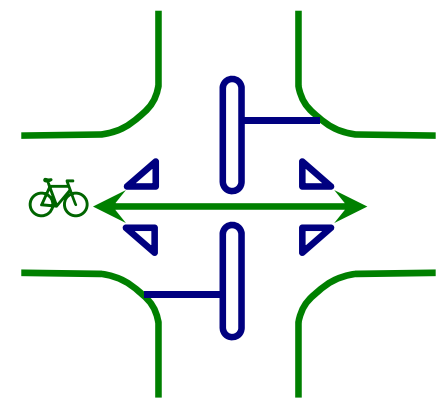


*Vancouver, Canada*





# Major Road Crossings



Christchurch