

OFC!


“Welcome to one of the CMHC.
You’ll be part of the PAC
and the CC clinic.
You’ll have IA’s on Wed
Occasionally you’ll cover
URS in GCC.”

ACRONYMS

ACE	Auckland City Environments
ACR	Arts, Community and Recreation Services
ADS	Advance Direction Sign (large white text on blue background)
ACC	Auckland City Council
ARC	Auckland Regional Council
ARTA	Auckland Regional Transport Authority
ATMS	Auckland Traffic Management System
BYL	Broken Yellow Line (Marking a NSAAT)
DIAG	Disabled Advisory Group
IT	Information Technology
LATM	Local Area Traffic Management
NSAAT	No Stopping At All Times parking restriction
NZTA	New Zealand Transport Agency
RAMM	Road Assessment Maintenance Management System
RFS	Request For Service
RRPM	Raised Reflectorised Pavement Markers
RTIS	Real Time Information Signage
SCATS	Sydney Co-ordinated Adaptive Traffic System
SIDRA	Signalised and unsignalised Intersection Design and Research Aid
SMS	Safety Management System
STU	Strategic Traffic Unit (traffic police)
TGSI	Tactile Ground Surface Indicators (hazard and directional tiles)
TMU	Traffic Management Unit (traffic signal control)
TUL	Transport and Urban Linkage committee
VPIS	Variable Passenger Information Sign
YFB sign	Yellow Finger Board sign
vpd	Vehicles per day
aadt	Average annual daily traffic
RCA	Road Controlling Authority
LGA	Local Government Act
TA	Territorial Authority
TSAO	Transport Safety, Assets and Operations
TIDG	Transport Infrastructure Delivery Group



ACRONYMS

APPROVED : 

PLAN No. ISSUE A

2008/0003

Auckland Transport Glossary

Acronym

A	B	D	G	LGA	NPC	PHR	RLTP	TGPPP
AAA	BCA	DA	Gateway Review	LGACA	NPV	PID	RLTS	TIGA
AADT	BCR	DC	GETS	LOS	NTC	PIDs	RMA	TINs
ACN	BRT	DBC	GPS	LTA98	NZEECS	PINs	ROI	TSS
ACPL	BT	DNZ	GWRC	LTCCP	NZRPG	POSG	RoNS	U
ADL/ADC		DSC	H	LTMA	NZRC	PP	RoR	UCF
ADK/ADB	BTN	DSI	HCV	LTP	NZRC Act	PPL	RPTP	UFB
AEE	C	dVac	HED	LVT	NZS	PPP	RRSP	UP
AIAL	CAA	E	HLC	M	NZTA	PSC	RUB	V
AIFS	CAF	e-BRT	HRC	MBIE	NZTTL	PTMA	RTPIS	VoT
AMETI	CAG	EC	HNO	MCA	NZTS	PTOM	S	VPD
AMP	CAPEX	EEM	HPO	MCV	O	PV	SA/SX	VTM
ANOP	CBD	ELT	I	MEP	ONRC	PWA	SAR	W
APB&B	CCMP	EMU	IBC	MMEWS	P	Q	SH(#)	WDA
APTN	CCFAS2	EWC	IFA	MoJ	PAUP	QES	SHA	WEBs
ARGS	CCO	EWL	IFRS	MoT	P2W	QTN	SMT	WEIs
ARPS	CCPZ	F	IM	MSQA	P+R	R	SOI	X
ATCOP	CFS	FAR	ITP	N	PC(#)	RAG	SQP	XRB
ATMS	CLAN	FLIP	IPSAS	NBI's	PBE	RAMM	STE	
ATOC	CMP	FTN	IV&V	NLTF	PBM	RCM	STIG	
	CPI	FN32	J	NLTP	PCG	RDC	SWAMMCP	
	CPTED	FYR	JTOC	NOP	PCI DSS	RFI	T	
	CTN	FYRR	L	NoR	PCM	RFP	TA	
	CRL		LCV	NORSGA	PHR	RFT	TAAG	
			LED				TFA	

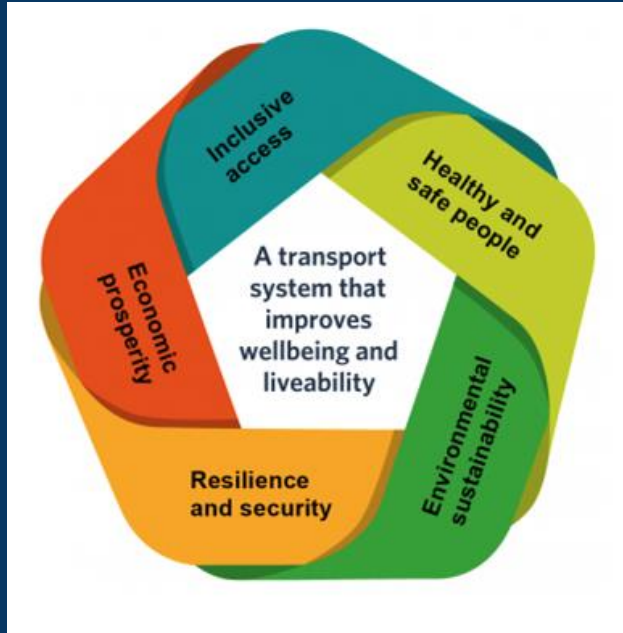


How do we engage with citizens in accessible, neutral, and safe environments for all to feel welcome ?

How do we utilize citizen / customer input towards implementing effective solutions together ?

- Know your customer - For meetings, be thoughtful of time & location.
- Consider children as constructive informed experts.
- When organizing capacity building or information sessions understand that knowledge is being shared both ways.

Be Creative - Be Intentional - Be Playful



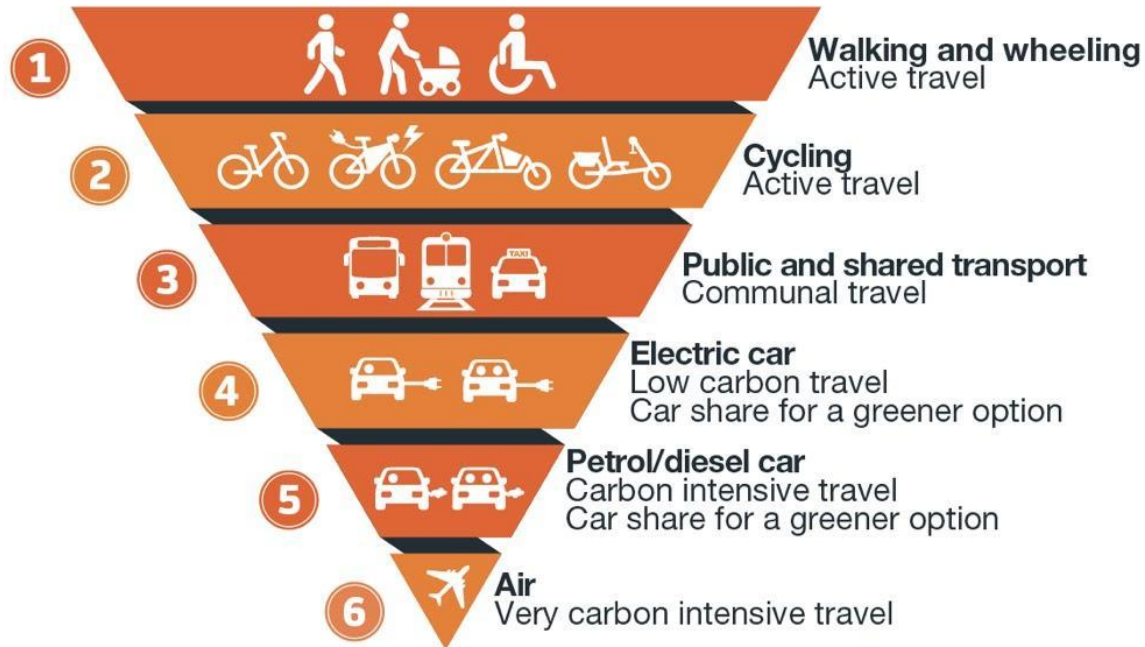
Transport Outcomes Framework
Ministry of Transport

Waka Kotahi (New Zealand Transport Agency) support the adoption of the definition of Infrastructure from the Resource Management Act 1991

Which include structure for transport on land by cycleways, rail, roads, walkways, or any other means.

LOW CARBON TRANSPORT HIERARCHY

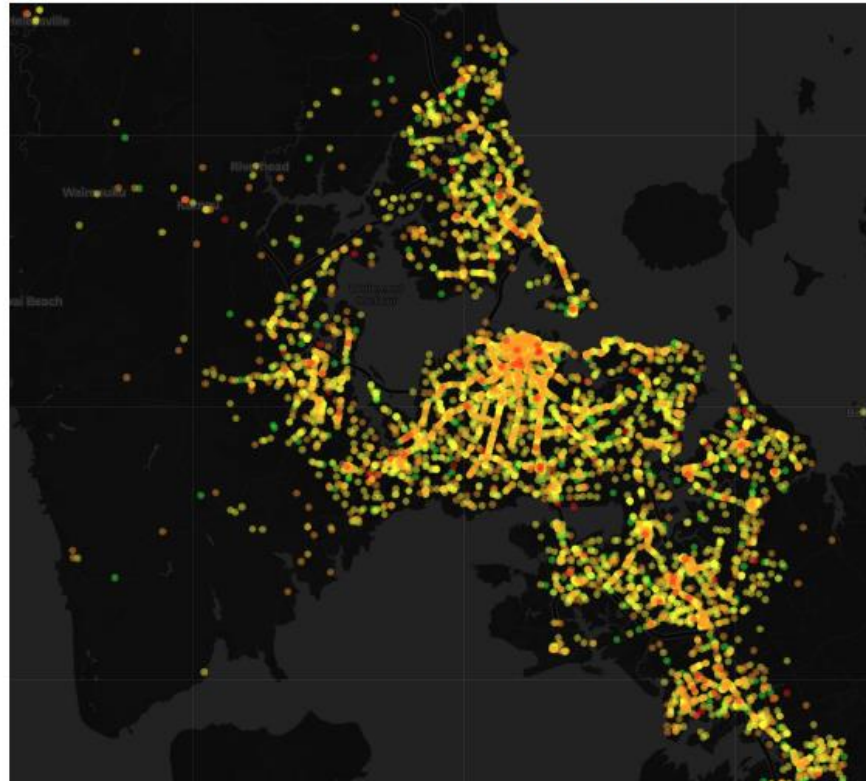
ENCOURAGING SUSTAINABLE TRAVEL TO REDUCE EMISSIONS





Reported Crashes, 2013-2023

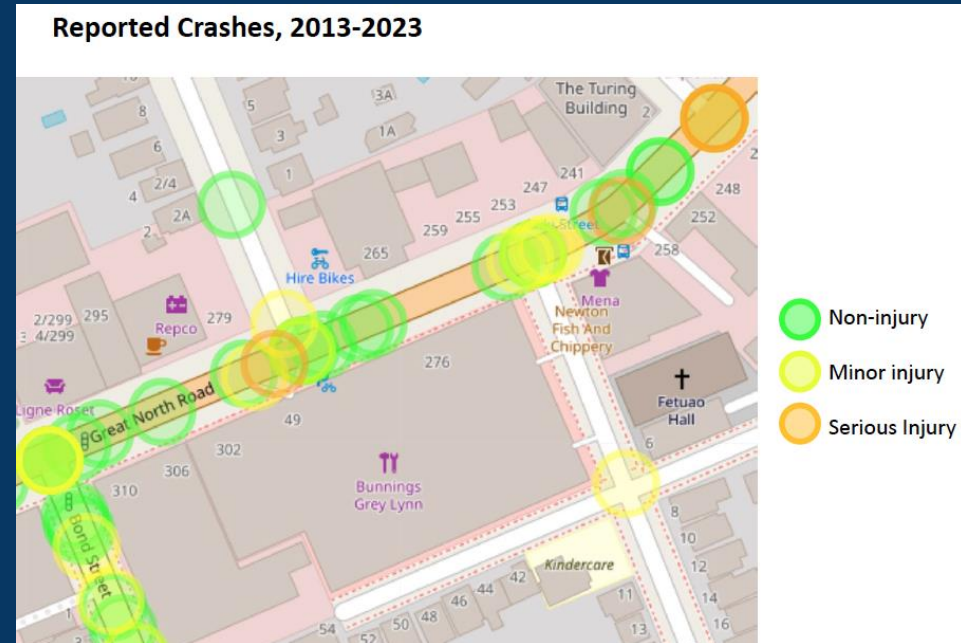
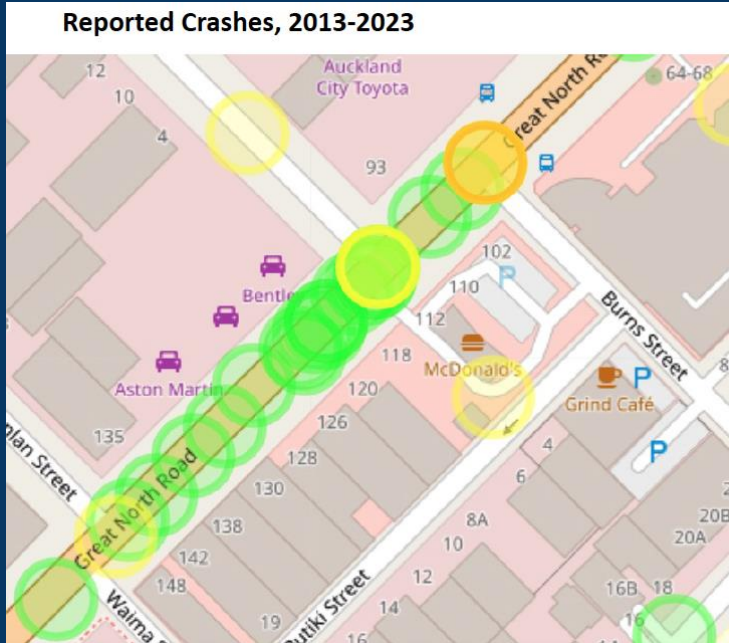
Bike and Pedestrian Involved



- Non-injury
- Minor injury
- Serious Injury
- Fatal

Reported Crashes 2013-2023

Along walking and cycling route to Newton Central School





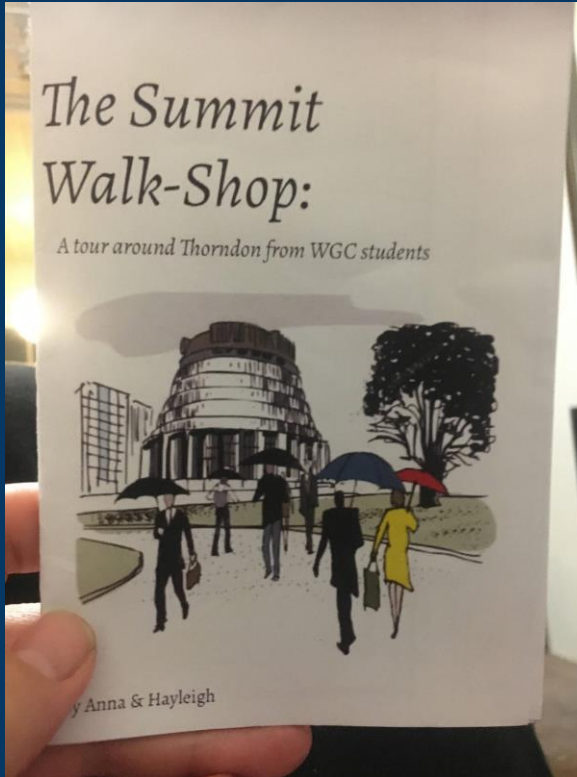












nzherald.co.nz Sign In

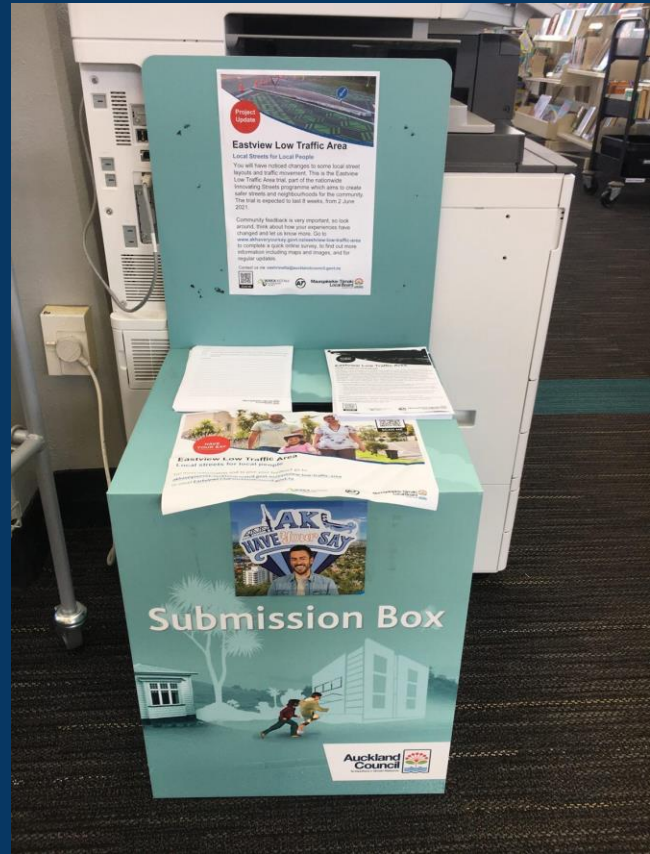
Advertise with NZME

Marist School Herne Bay principal Louise Campbell said Pryde was far from the only parent with concerns. Around two-thirds lived within cycling distance, but many had shared their safety worries with both her and Auckland Transport.

She had talked to the organisation about solutions, such as a pedestrian crossing or electronic signs warning motorists they were in a school zone.

Auckland Transport responded by sending engineers to assess the school, but the only action that had been taken was to paint two white lines at the entrance to the school, Campbell said.







FCBAUCKLAND



Free childcare - activities - hot drinks

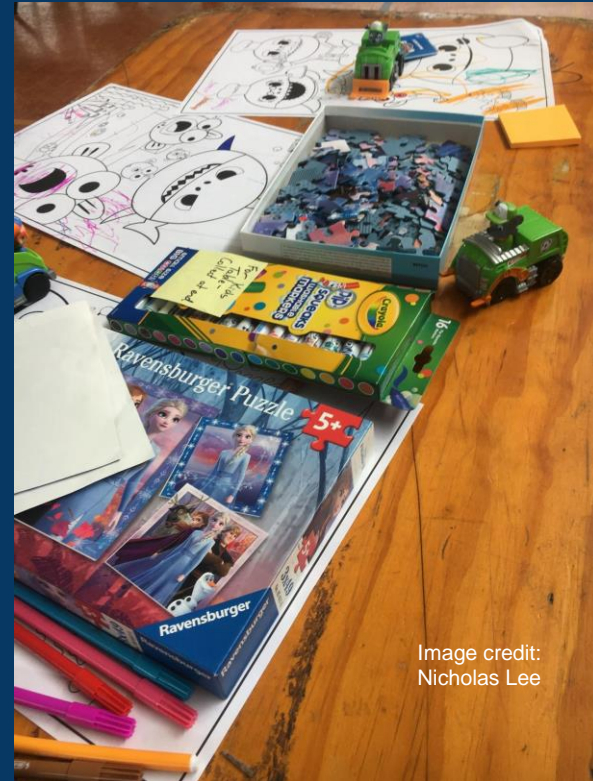
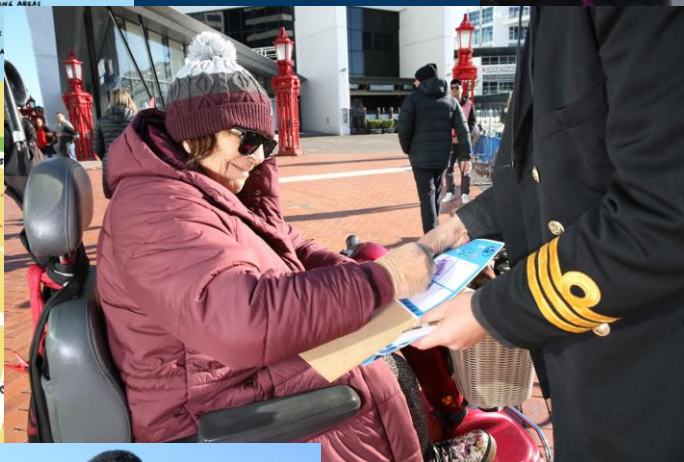


Image credit:
Nicholas Lee













MARKER ON CROSSINGS

Test By School Pupils

"The Press" Special Service

AUCKLAND, Nov. 20.

The first New Zealand trial cone markers to increase the safety of children using pedestrian crossings was made recently by pupils of Newton Central School.

A yellow cone of sponge rubber topped with a red flag was placed in the middle of a Great North road crossing while school patrols were on duty.

The reactions of drivers to the marker were observed by traffic officers, teachers, school committee members, and others concerned with road safety.

The placing of the marker to give drivers ample and unmistakable warning of school patrols was suggested by Mr A. K. Greves, a representative of school committees on the New Zealand Road Safety Council. The council approved a trial of the marker and is expected to recommend its adoption on a national scale if it proves effective.

MARKER ON CROSSINGS
Press VOLUME C, ISSUE 29676
21 NOVEMBER 1961, PAGE 4

Digitised in partnership with
Christchurch City Libraries

credit: Stuff Limited



Ask us a PT related
question 🙄🙄

Type something...

Our answers 🙌



Ask us a PT related
question 🙄

Type something...

Our answers 🙄

Ask us a PT related question 🙄

what is PT

**Public Transport.
We're sorry we
should stop using
acronyms!**

Ngā mihi
Thank you

Places for Good

“Pride in Place”

Email: placesforgood@gmail.com

Social media: @placesforgood

