

ENVIRONMENT CANTERBURY
Kaunihera Taiao ki Waitaha

Greater Christchurch PT Futures: finding a pathway

Mark Gregory, Principal Transport Planner

BA(Hons) MET CTPP MIHT MEngNZ

Format

- Who cares?
- What's the deal?
- That's impressive
- Uh oh!
- I love it!



Who cares?



- NZ's second largest region; fastest growing:
 - +7,000 / year
 - >700,000 by 2050...
 - ... a habit of exceeding past growth projections
- TomTom: NZ's slowest city
- Strong economy, massive capacity..
- ..but tensions between transport space and more productive uses.
- Highest per capita central city parking supply in Australasia
- Counter factual: without PT futures, growth won't be unlocked or will be unsuccessful

What's the deal?

- Programme developed in 2020: needs refresh
- Growth outpacing investment
- Different growth – faster, MUDs
- Congestion on core routes, unserved growth areas
- Financial challenges: PRR, potential rates capping, etc.

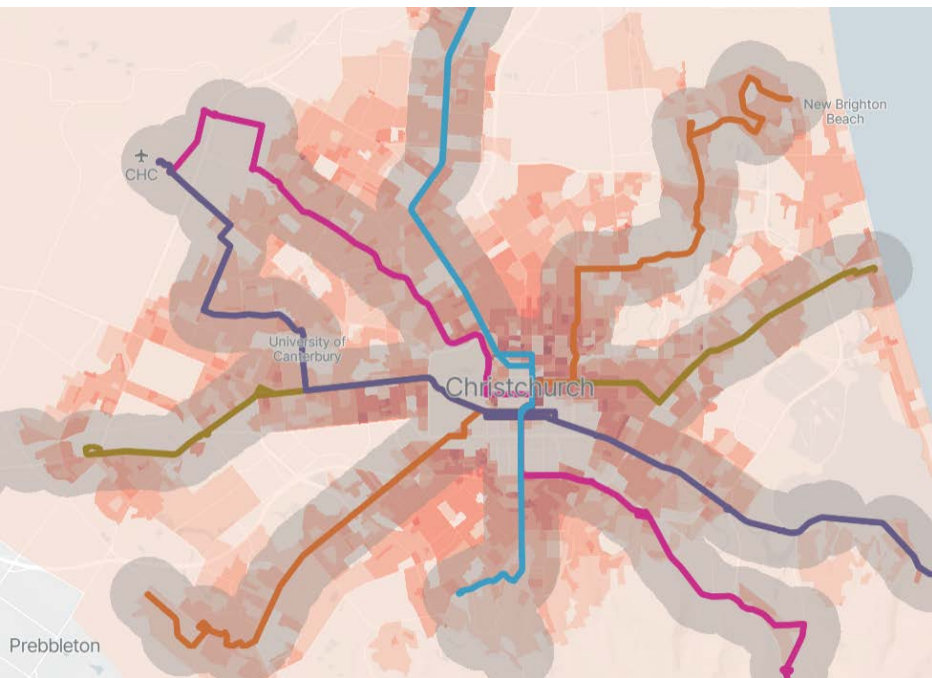
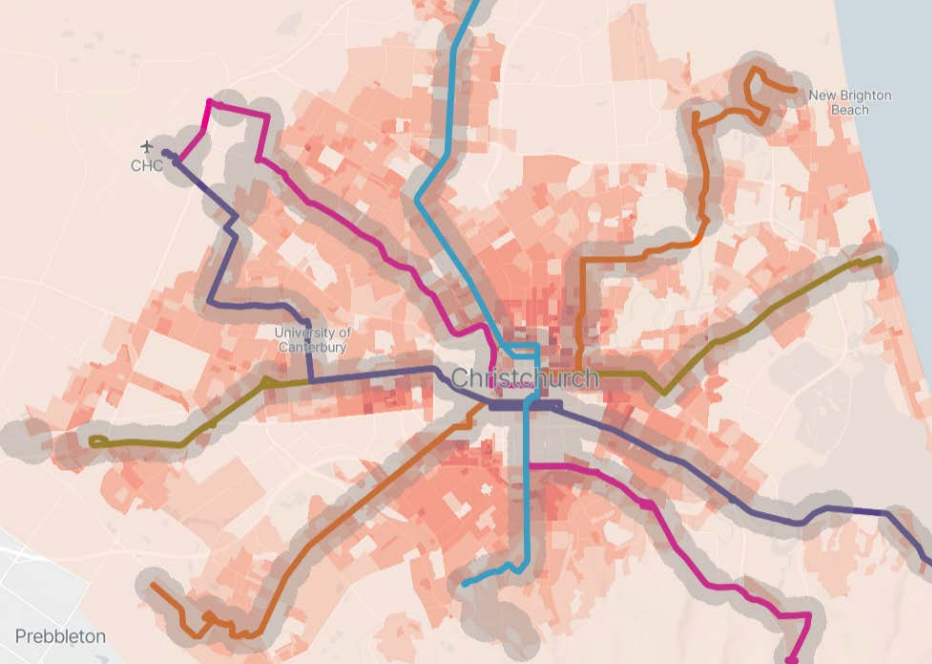


That's cool!

In response so far we have...

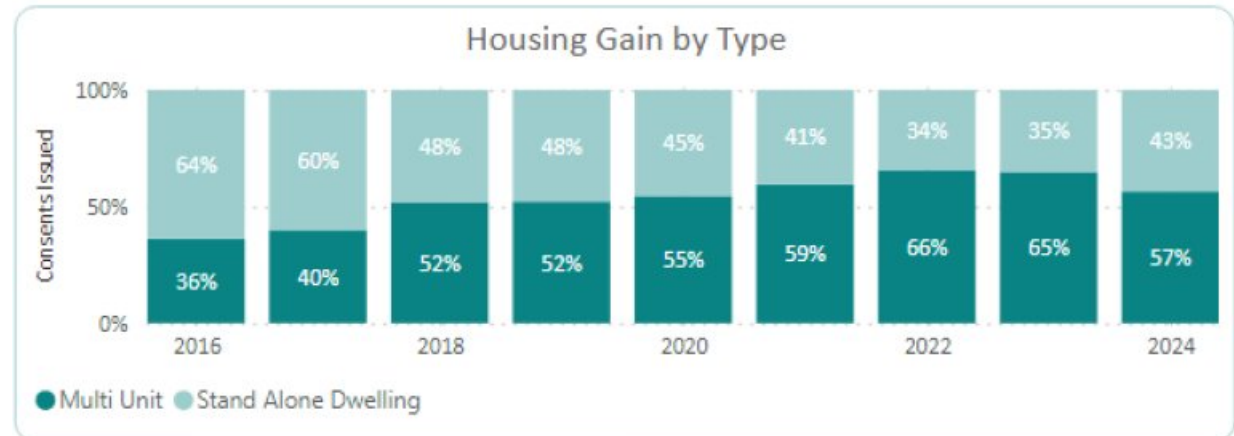
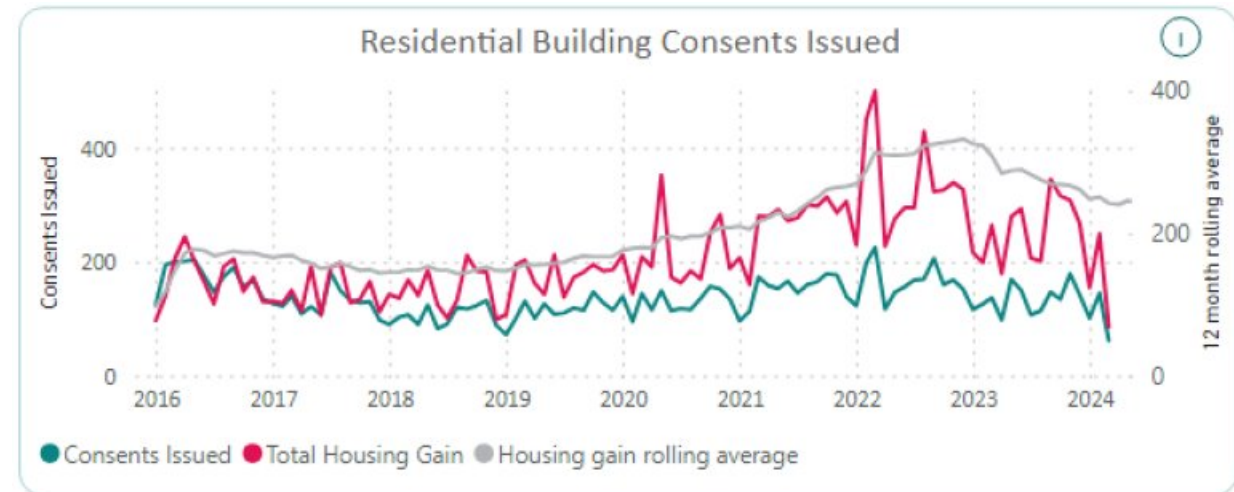
- Implemented only service improvement in the 2024-27 NLTP, Route 7
- Implemented the first mix of integrated and exempts services within a 'hybrid' model (think PPP)
- ...trialed and launched Moto Move – amazing progress towards NTS





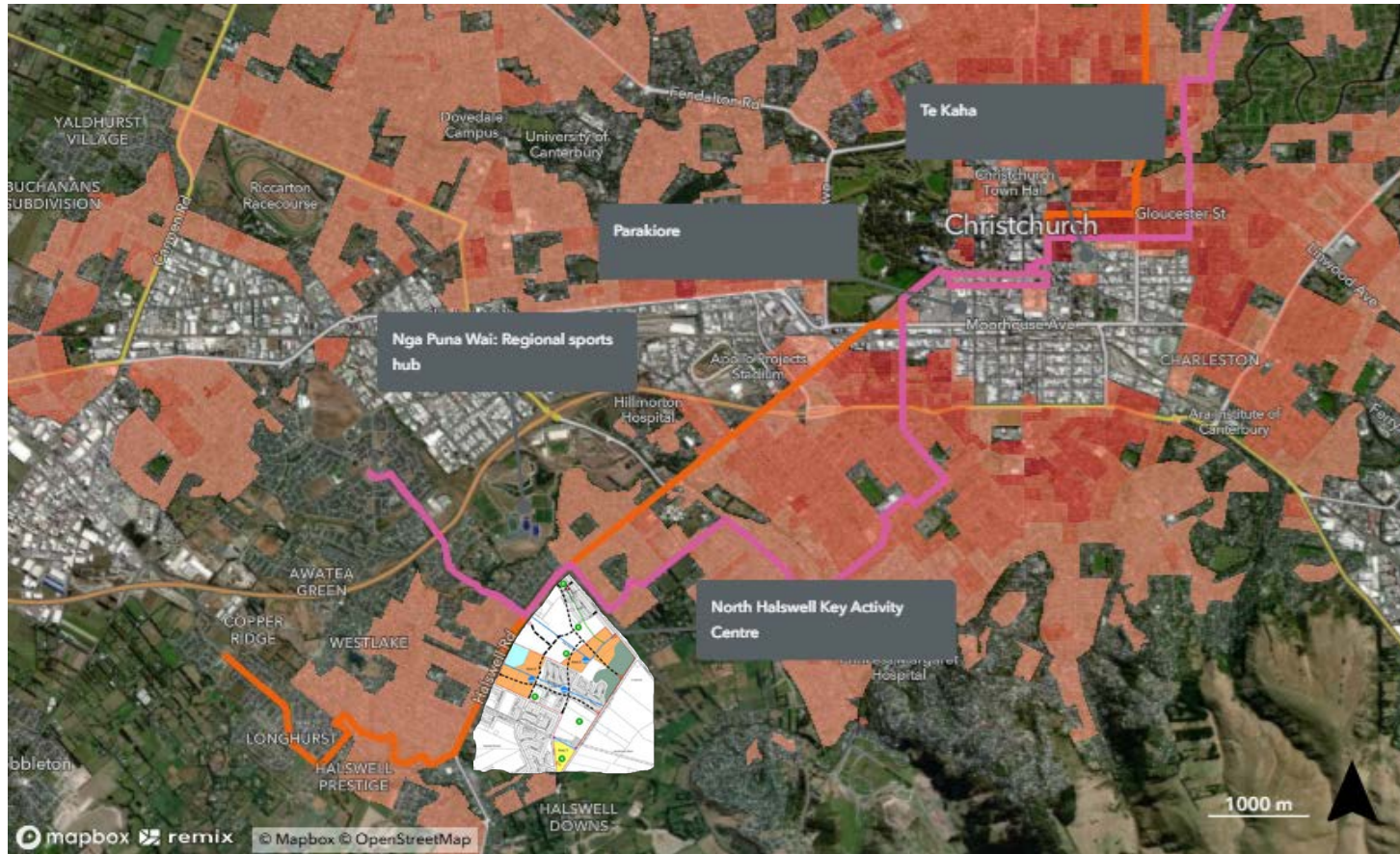
Enduring strategy:

- Core services on committed routes, unchanging
- Customer certainty
- Development responsiveness
- Coinciding with changing growth outcomes
- 400m – 600m catchment growth



7

Halswell to Queenspark



- **‘Frequency is freedom’**
- Only service improvement in current NLTP period
- Serves Halswell – which accounts for 40% of development in Christchurch city
- Coincides with NZTA / CCC investment in PT priority – 7km of bus lanes, planned completion 2027
- First 6 months indicate strong performance
- Double decker trial
- Investment pathway needed to future: North Halswell KAC, 30,000m² GFA
- Thanks to NZTA for being great partners

84**85**

Rolleston/City direct

Combined included / exempt delivery model

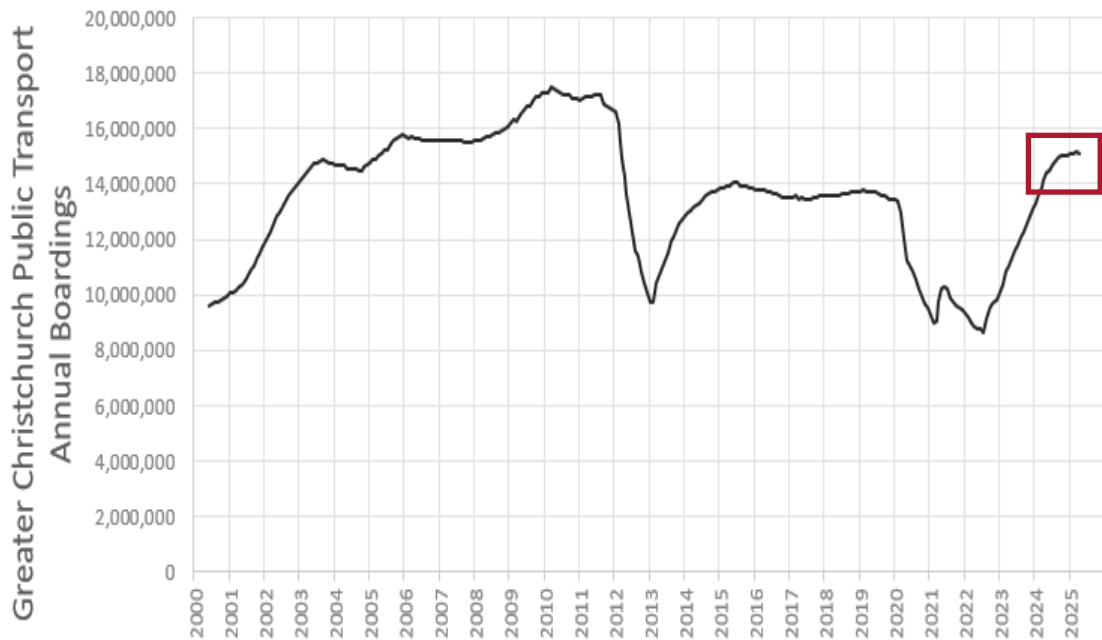
- Before
 - Direct Rolleston – City service, 4 trips per hour
 - Served park and ride site
 - Most overcrowded and complained about service in Metro network
- After
 - Direct Rolleston – City service, 10 trips per hour
 - Services wrap around the town, and park and ride site
 - Hail and ride
 - High frequent spine
 - 30% growth in patronage

Rolleston bus stops



Uh oh...

Greater Christchurch Public Transport Annual Boardings
12 month rolling average



- Investment not keeping pace with growth
- PT was 'defunded' after earthquakes, still to recover to pre-EQ boardings
- Post COVID explosion of 15% per year
- Need investment to sustain growth trajectory

“I love it”

Network review, we have a plan to –

- Maximize continuous programme potential and endurance of future programme
 - Across **all** Transportation Planning technical areas
- Focus on changing customer preferences
- Trial alternative service models
- Build in change, innovation
- Staging around key corridor – towards MRT
- Customer centric, positivity

- **Doing the right thing**



Source: The Press

The team



Stewart Gibbon - GM

Sonia Pollard, Manager Strategy and Planning

Steph Symms – Senior Comms Advisor

Len Fleet – Senior Strategy Advisor

Dr Omid Mousavizadeh – Senior Planner

Rob Bott – Project Manager

NTS – Jeremy Dickson, Andy Tubay

ENVIRONMENT CANTERBURY
Kaunihera Taiao ki Waitaha

Kia ora 😊