

Tekapo – Challenges & opportunities in a small rural town



 abley

Insightful solutions.
Empowering advice.

Mackenzie District



• \$92,000 extra
• expenditure
• =
• 1% rate increase

- Roading budget: \$3.98million p.a.





Church of Good Shepherd: 750,000+yr



Mt John Observatory: 100,000+yr



Footbridge: 500,000+yr

≈400 residents

SH8

SH8



State Highway 8 Road Bridge: 1.7million veh



District Wide Transport Strategy

- Short, medium, long term
- Foresaw current issues
- Identified impacts
- Balancing of needs
- Planning and allowing for future development.



Tekapo challenges – State Highway 8



Traffinz / November 2018



abley

Tekapo challenges – Planning



Hotel – **200 beds**



YHA – **120 beds**



- Lake Tekapo Motels
 - Tekapo Sky Hotel
 - Lake Tekapo Holiday Park
 - The Cairns – **100+** residential subdivision
 - Landco Development – **180 houses**
 - Previous subdivision land now being developed
 - Previously residential houses being renovated added to for tourist market
 -???
- Earth & Sky Visitor Attraction

Tekapo challenges – Infrastructure

- Rural – Urban transition
 - Limited footpath provision
 - People walking on road
 - Absence of cycleways
- Road environment
 - Poor alignments / visibility
 - Narrow seal widths
- Visitor attractions
 - Church of the Good Shepherd
 - Freedom camping, DoC estate, Dark Sky Reserve etc



Tekapo challenges - Parking

- Different vehicle types
 - Sizes of vehicles increasing
 - Stopping point between Queenstown & Christchurch
- Distribution between key attractions
- 330 permanent spaces provided
→ 450 need by 2030

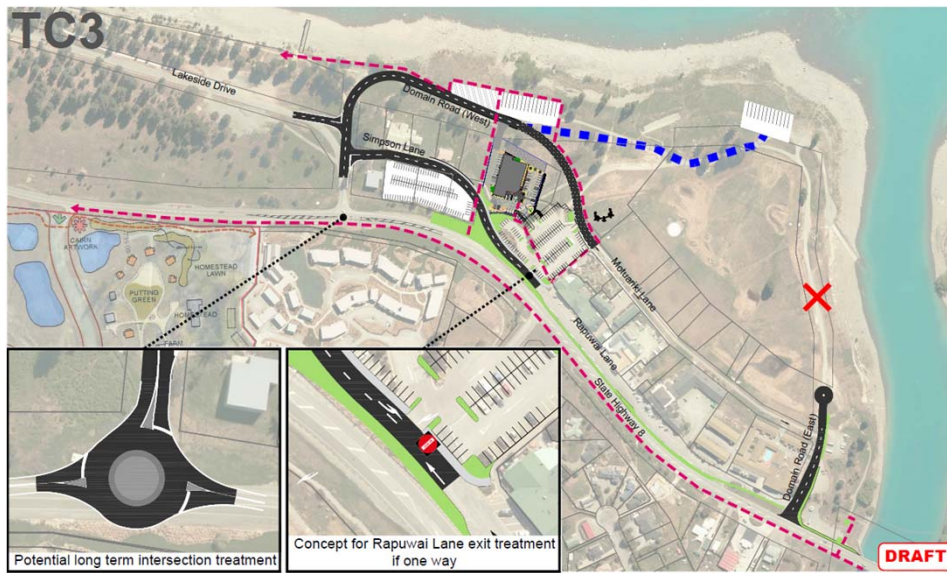


Community Engagement

- 4 week consultation process undertaken in November 2017 involving
 - online, drop-in sessions and social media
- Purpose was to:
 - Seek community feedback
 - Identify likes and dislikes
 - Gather further ideas/ flaws in proposals
 - Identify any matters or concerns that had been missed
- 900+ comments received on 6 proposals



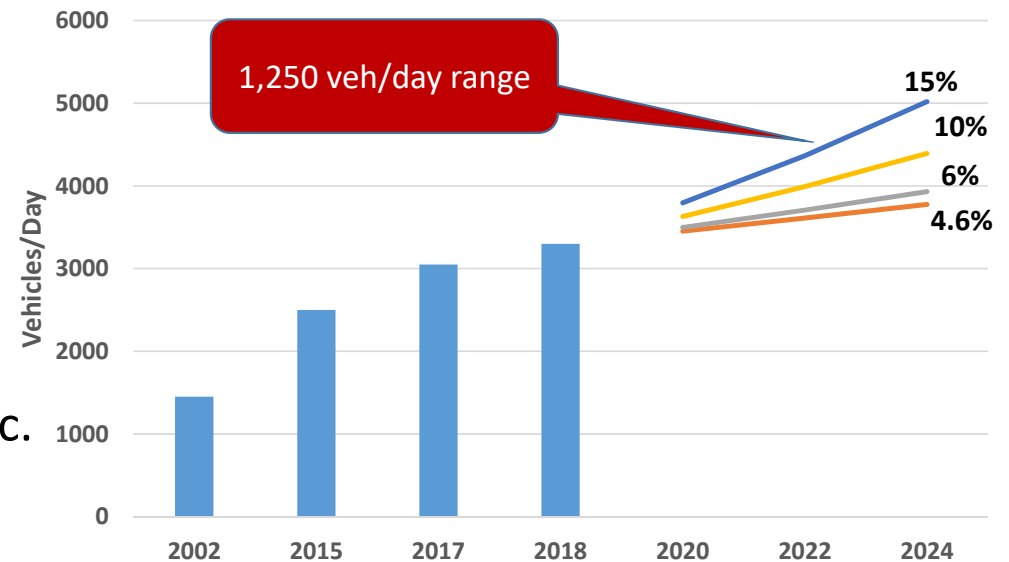
Key Proposals - Tekapo



Programme Delivery

- Indicative cost of proposals – \$7- 10m
- Delivery phasing - funding alignment
- Tourism numbers and growth hard to quantify
- Community/ Ratepayer needs vs NZ Inc.
- Shifting priorities, risk, needs & wants

Tekapo Highway Traffic Forecast



Summary

Mackenzie District Council is charged with:

- **Enabling democratic local decision-making and action by, and on behalf of, communities**
 - **Meeting ... needs of communities for good-quality local infrastructure ... in a way that is most cost-effective for households and businesses**
- ✓ Strong Council and Community Board support
 - ✓ Transport strategy informs & guides decision making
 - ✓ Support GPS and NLTP priorities
 - ✓ Strong community engagement
- ✓ **Comparatively high investment in transport assets**
 - ✓ **Strong financial management**

However:

- ? Rapidly changing environment
- ? Need to balancing priority, demand and risk

BUT:

- ? Need for **City Centre Level** infrastructure
- ? Significant cost implications
- ?



Contact details:

Scott McKenzie

Roading Manager, MDC

scott@mackenzie.govt.nz

Matthew Noon

Associate, Abley

matthew.noon@abley.com

