

# What do we mean?

**Development Response** is actively managing construction disruption.

It is the coordinated planning, design and implementation of tools to mitigate the impacts on people and place.

Supported by

Absolutely Positively  
**Wellington** City Council

Me Heke Ki Pōneke



What people notice

What makes the most difference



### **Community and placemaking**

*We activate and strengthen communities through beautification, promotions, and events that bring people together.*



### **Support for business**

*Businesses are at the heart of vibrant communities. We provide advice, grants, and creative solutions to help them adapt and thrive during construction.*



### **Communications and engagement**

*Clear communication and active engagement keep people informed, involved, and confident in the project's goals.*



### **Effective city operations**

*From traffic management to waste handling, we ensure the city keeps running smoothly around construction sites.*



### **Site experience and street health**

*We focus on keeping construction areas safe, clean, and accessible, addressing issues like vandalism, graffiti, wayfinding, and compliance.*



### **Programme coordination**

*Careful planning ensures construction is staged, scheduled, and integrated with minimal disruption.*



### **Understanding impacts**

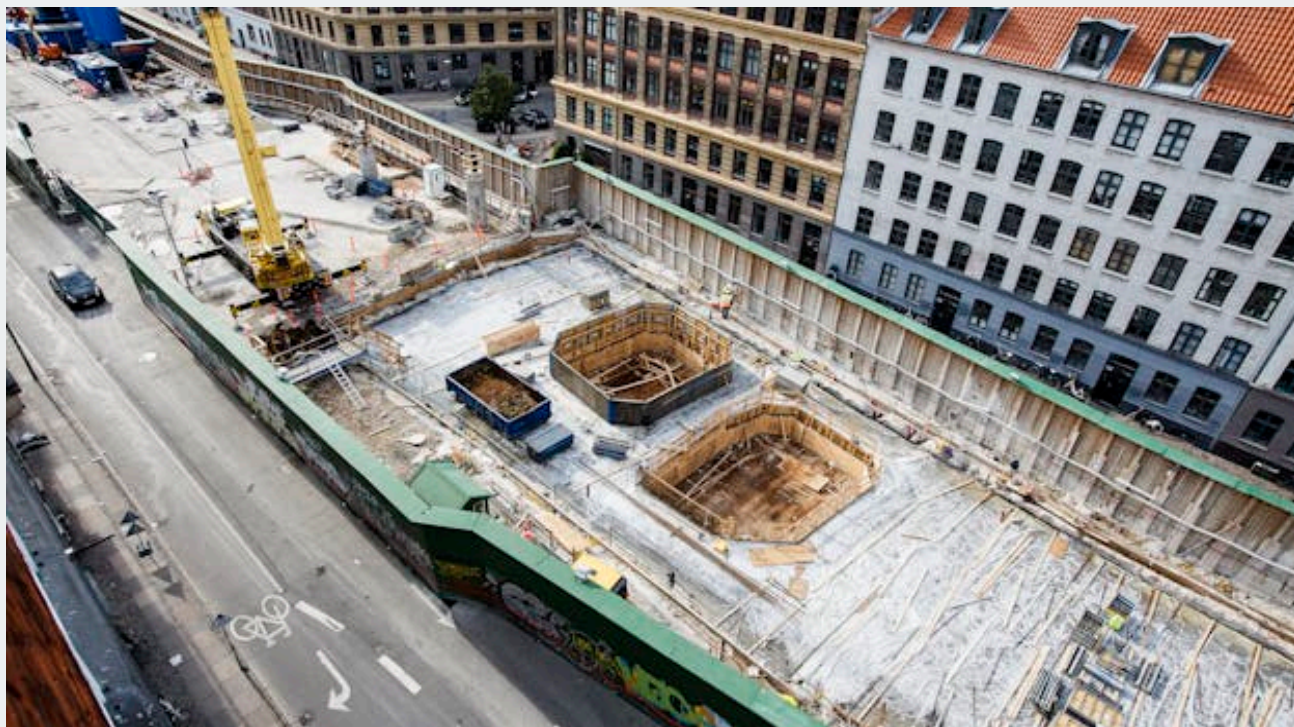
*Every decision we make is grounded in insights from the community, ensuring we prioritise their needs and concerns.*











Source: <https://metroselskabet.euwest01.umbraco.io/media/2eof1wwd/coolconstruction-2019.pdf>

Oases in Copenhagen by Brian Bak Ulbrichsen is a wheel of fortune with hidden places in Copenhagen. Kongens Nytorv 2016.



The Generous Wall (Den Generøse Væg) at Frederiksberg Station is the result of a competition with the intention of creating an urban space that supports the seating area outside the café. The Danish architect Frederik Lønøw won the competition and built the wall with help from carpenter students from Copenhagen Technical College and painter students from Technical Education Copenhagen. Frederiksberg Station 2014.



Dina Brændstrup from 1:1 landskab was behind the colourful horses on the way out of the hoarding at Kongens Nytorv. The installation is a homage to the equestrian statue of Christian V in the middle of the city square, which during the Metro construction was surrounded by hoarding. Ride the High Horse as King Christian (Højt til hest som Kong Christian), Kongens Nytorv 2015.

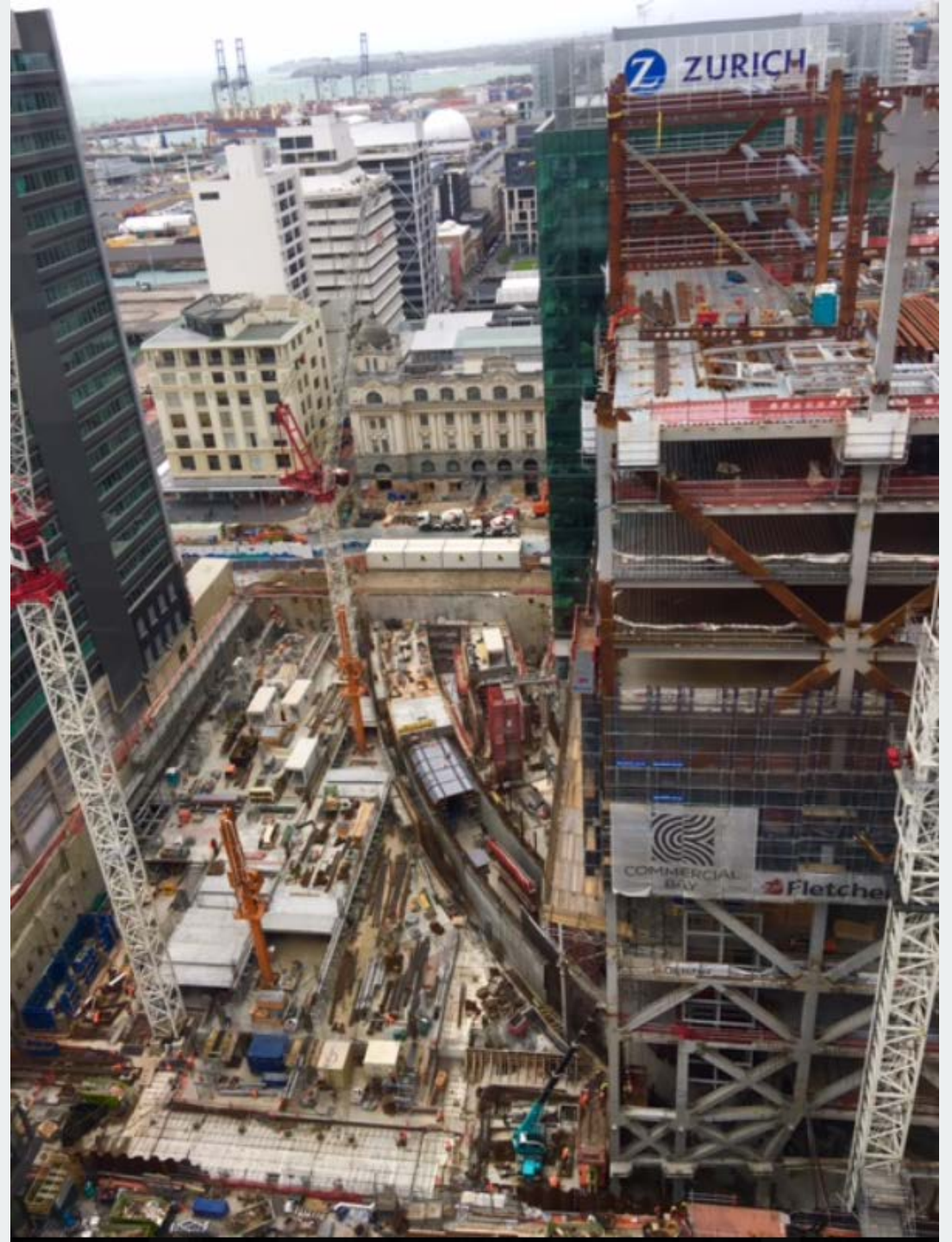
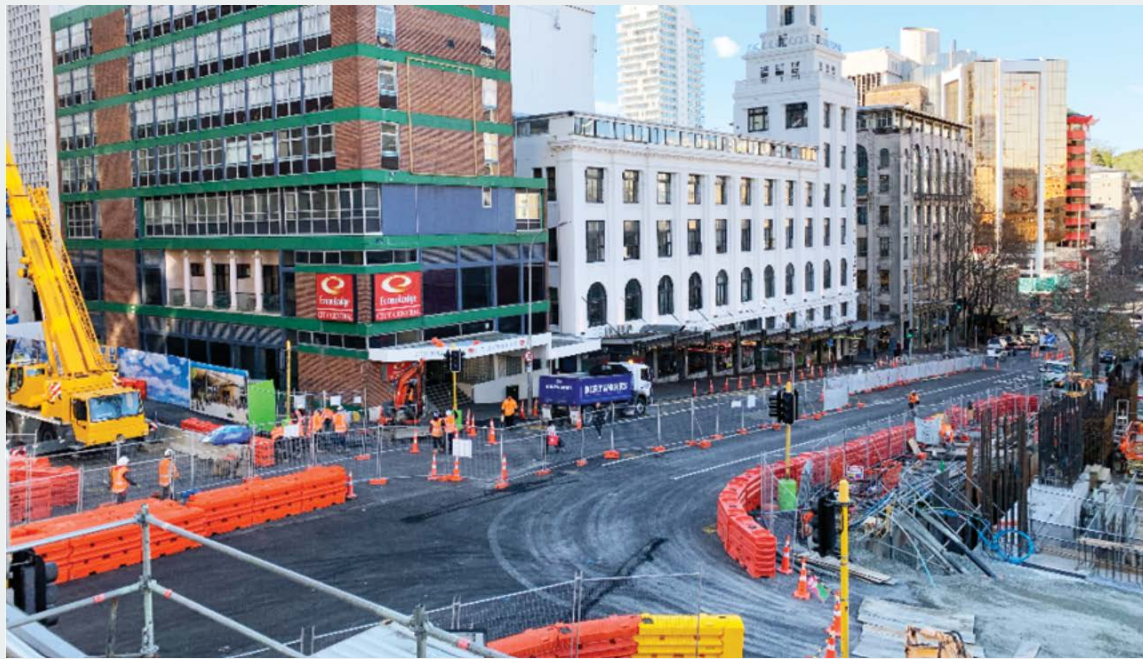


Behind the hoarding, a whole bunch of plastic pipes run crosswise. If you can find the ends to the same pipe, you can talk around the corner through the pipes. Speaking Labyrinth was designed by George Koutsouris. Aksel Møllers Have 2015



At Krauseparken in Østerbro, Matilde Digmann, a.k.a. MatMakesStuff, has decorated the observation platform on which both children and adults with interest in construction sites and large machinery can keep pace with the metro construction. Superheroes in Krauseparken (Superhelte i Krauseparken), Østerbro 2017.



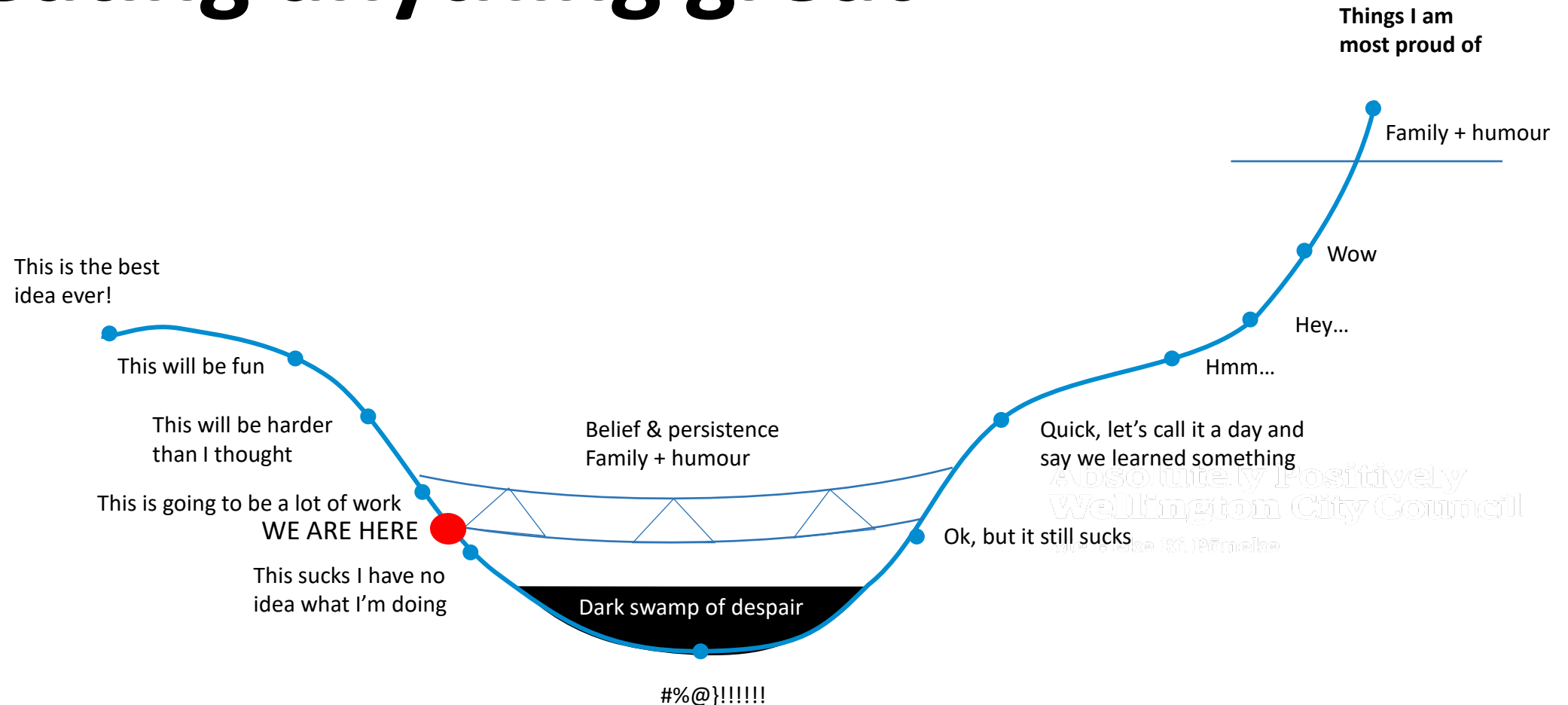








# The emotional journey of creating anything great





# Cool Construction contributes

## ...to city life

The purpose of Cool Construction is first and foremost to give something back to Copenhagen's citizens, visitors and local businesses, allowing the changing artwork at each site to generate new public spaces while the capital's Metro expansion is under construction.

Each piece of art is unique and often allows for interaction with the public. An example could be an incorporated bench inviting citizens to sit down for a chat or a coffee break. Another example could be an enormous, interactive installation where the public contributes to the creation of something new; something which was not there before but now attracts people and creates a new space; new means of socialising.

The artwork on the site hoardings is regularly accompanied by launches, poetry readings, events, photo sessions and other creative activities very near the Metro construction sites. In this way, Cool Construction plays a key role in ensuring that the local urban environment is not put on hold, but instead can function and develop while construction is ongoing in the middle of the city.

The *Angels of the City* (Byens engle) is designed by Christina Bruun Olsson. You grow a pair of angel wings as soon as you sit on the bench. Kongens Nytorv 2014.

