

Why Industry training is important



[HOME](#) [ABOUT US](#) [COURSES ▾](#) [THE TEAM](#) [PARTNERS](#) [CONTACT US](#) 

Industry, Methodology & Product Training

Accurate offers a wide range of training options starting from basic product knowledge, right through to extensive theory and practical training.

- Introduction - who is Accurate
- Industry needs skill staff
- Brief history of training by Accurate
- Courses evolving over time
 - Improvements
 - Drivers
- Development of current course framework
 - Working within Industry and Professional bodies
- Demands of compliance, competency

1970s

Company founder Philip Stickland, undertakes technician apprenticeship with Fletcher Health & Science.

1981

Philip becomes the National Service Manager for Sokkia, undertaking period terms in both New Zealand and Australia.

1983

Nick Farmer factory trained by MSA-The Safety Company, on personal gas detection.

1994

Accurate Instruments (NZ) Ltd is established in August by Philip Stickland, operating from St Heliers, Auckland.



1980s

Rob Hughes, current CEO begins in the field of Land Surveying in Australia, before moving into sales for Sokkia in both Australia and the United Kingdom.

1999

Accurate moves to new premises in Harris Road, Mt Wellington incorporating a service facility.

History Timeline

Accurate have been involved in the surveying, construction and safety industries since the late 1970's. The company was formed in 1994 and has become an industry leader in selling, servicing, training and hiring instrumentation nationwide. Due to an ethical approach with our clientele and suppliers, branding, frequent direct marketing, strategic planning, hand picked staff, and good old fashioned hard work, Accurate has continued to move forward to become a recognised leader in the industry.

2009

Accurate opens its first South Island branch in Hayton Road, Wigram, Christchurch.

2014

Accurate's Industry Training department is established to meet the shortage of industry knowledge in key technology sectors, partnering with CPIT.

2001

Accurate begins its long term relationship with Emirates Team NZ in preparation for the 2000 America's Cup campaign in Auckland.



2017

A state of the art new showroom, service centre and industry training facility is opened in Wigram, Christchurch.



2003

New showroom, service centre opened in Marua Road, Mt Wellington, Auckland.



2013

Accurate technical safety division established after the acquisition of HSE.

2015

A diamond partnership is established with Survey+Spatial (formerly NZIS).

2018

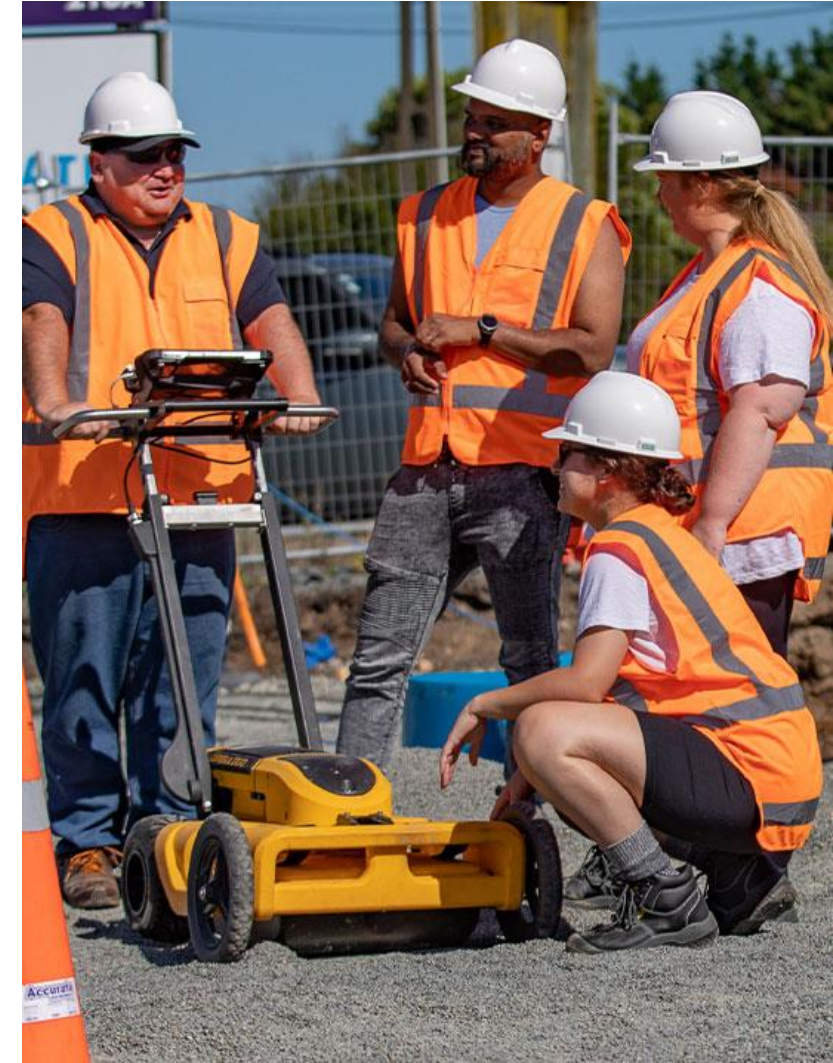
Accurate achieves ISO 9001 accreditation



Industry Needs

- Product Knowledge
- Product Usage
- Experience
- What Industry sectors expect
- Help with existing equipment & Instruments
- Best Practice
- Compliance & Competency

Accurate
Training



Brief History of Accurate Training

- Basic Product Training – adhoc..
- Basic Usage to achieve a goal
- 2009 Basic courses developed – Product
- 2014 Partnered with ARA Institute of Canterbury
- Working with Nulca and BeforeUdig



Evolving over time – the journey

- Product Complexity
- Product Usage
- Experience
- Technology Development
- What Industry sectors expect
- Help with existing equipment & Instruments
- Best Practice
- Compliance & Competency

Development of current course framework



May Newsletter

Working Groups - Making MAJOR Headway!

Employment and Skills Development

- Sam Allen

I am pleased to advise that the team has made some visible progress with some very important initiatives aligned to our strategic plan.

Training and Development

- Our HOD Jackie Henare in Nulca working group
- Nulca & Accurate want to co-develop
- Draw on experience and Best Practice
- Help define levels for development
- Define components, competencies and learning outcomes for each level
- Work towards professional certification
- Accurate can ensure our courses are relevant to industry needs

Nulca NZ Training and Skills Development Pathway



Pathway outlining training available to Locators within NZ.

Utility Locator Skills Pathway



Accurate Training has been approved by Nulca (NZ) as an Industry Trainer for a number of the steps in the Locator program. The Accurate courses are Attained by ARA Institute of Technology.

Nulca New Zealand (NZ) is the industry association representing underground Service Locators and those involved in locating and protecting New Zealand's underground infrastructure.

Nulca have set the interim skills, training, and development pathway for professional Locators, which is designed to enable Locators to work towards and achieve professional certification.





Accurate

Training



Basic Clearance, Avoidance & Verification Course

This 1-day course is run by Accurate Training.

This course is designed to give those starting out with cable locators the introductory knowledge and skills they need to work confidently and safely. Using cable location equipment, we provide you with the base level of theory, the science and best practice processes. Our trainers will help you develop the knowledge and skills to operate equipment safely and effectively.

[COURSE DETAILS](#)

Level 3 – EML Utility Location

This 2-day course is run by Accurate Training.

This course is designed to explore more in advanced practices not just for avoidance but also more accurate locates. Learning to utilize these techniques in the field giving those working with cable locators regularly enhanced skills and practice they need to work reliably confidently and safely. Using utility location equipment, we practice using these features and methods to better understand how to improve the quality of the location activities. Our trainers will help you explore and develop the skills to operate advanced equipment safely and effectively.

[COURSE DETAILS](#)

Level 3 – GPR Utility Location

This 2-day course is run by Accurate Training.

This course is designed to give those being introduced to GPR technology an understanding of the background science, fundamental working knowledge including, setup, data collection and interpretation along with the practical elements to help identify underground services and utilities. Data interpretation will be explored in the classroom and supported with evidence in the practical sessions. The course covers a methodology to collect and interpret the data traces with GPR developing the knowledge and skills required to work confidently and safely. Our trainers will help you develop the knowledge and skills to operate your GPR equipment safely and effectively.

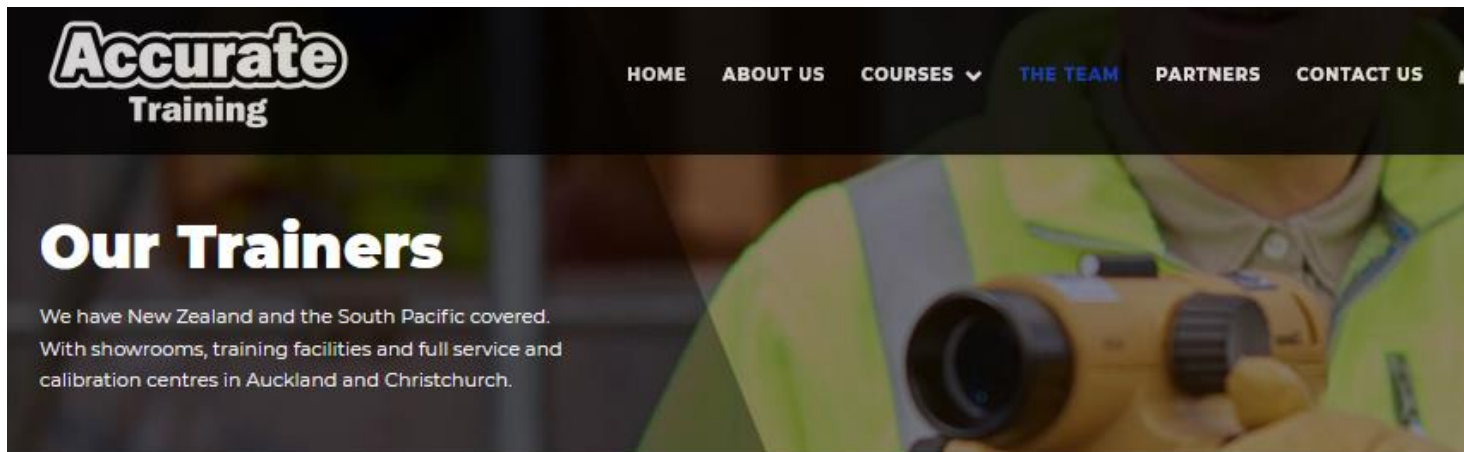


Demands of Standards, Compliance, Competency

- There are many standards
- There are many authorities
- What is required
- Nulca are well into this process
- Accurate are keeping abreast of changes
- We review and update our material all the time
- Compliance is now driving purchasing also



Summary and Questions



Jackie Henare
Training Manager
Head of Department



Bill Gyde
Approved Cable Locator Trainer
RNZAF – Avionics Technicians



David Openshaw
Bsc (Hons), Post Grad. Cert.
Education



Mark Gemmell
Level-1 Infraspersion Institute
Certified Infrared Thermographer

- Industry training is complex
- You need to like people and have a passion for training
- Be humble and equally prepared to learn – life long
- Embrace change
- Be enthusiastic, have fun
- Everyone has something to teach
- Teach from within the industry
- Build Compliance & Competency

Any Questions?
Thank you all