



Transforming public transport:

Whangaparāoa Peninsula

after O Mahurangi Penlink



Whangaparāoa Peninsula

32kms from the Sky Tower to the western end.

An additional 17kms to the eastern end.

More than 38,000 residents.

Only one road on and off the peninsula = congestion.

1.5km long dynamic lane at western end.



Whangaparāoa Peninsula

Existing public transport network



At Hibiscus Coast Station, local buses connect with services to North Shore and City Centre (via Northern Busway from Albany)

Gulf Harbour ferry to downtown only.

O Mahurangi Penlink

New state highway

More direct connection between the peninsula and Northern Motorway.

One general traffic lane in each direction.

Planned to open in 2028.

An opportunity to provide more direct services between the Northern Motorway and the Whangaparāoa Peninsula?



2023 Draft Regional Public Transport Plan (RPTP)



NX2 to new Whangaparāoa Station via O Mahurangi Penlink.

New frequent bus service 99 between Gulf Harbour and Whangaparāoa Station.

Removal of Gulf Harbour ferry service.

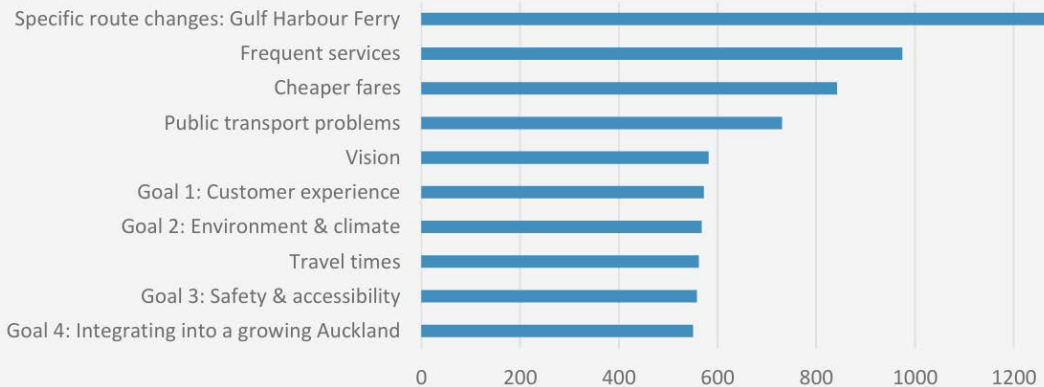
2023 Draft Regional Public Transport Plan (RPTP)

Proposal was not well received by ferry users

3,196 total submissions

2,226	survey submissions
966	emailed submissions
2	verbal submissions
2	written submissions

Top 10 RPTP topics with the most responses



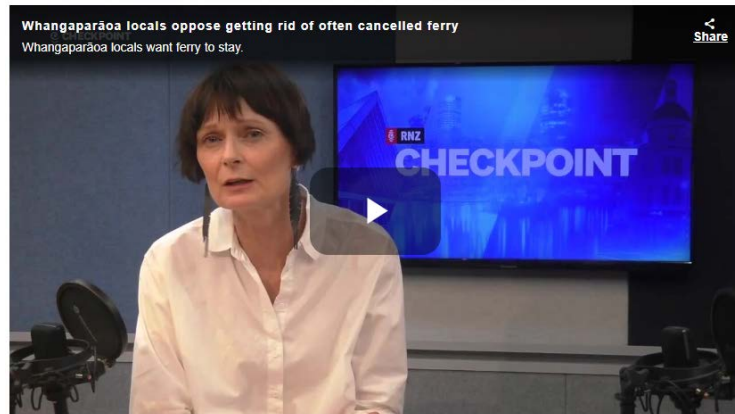
TRANSPORT

Whangaparāoa locals oppose getting rid of often cancelled ferry

From **Checkpoint**, 5:18 pm on 11 July 2023

Share this

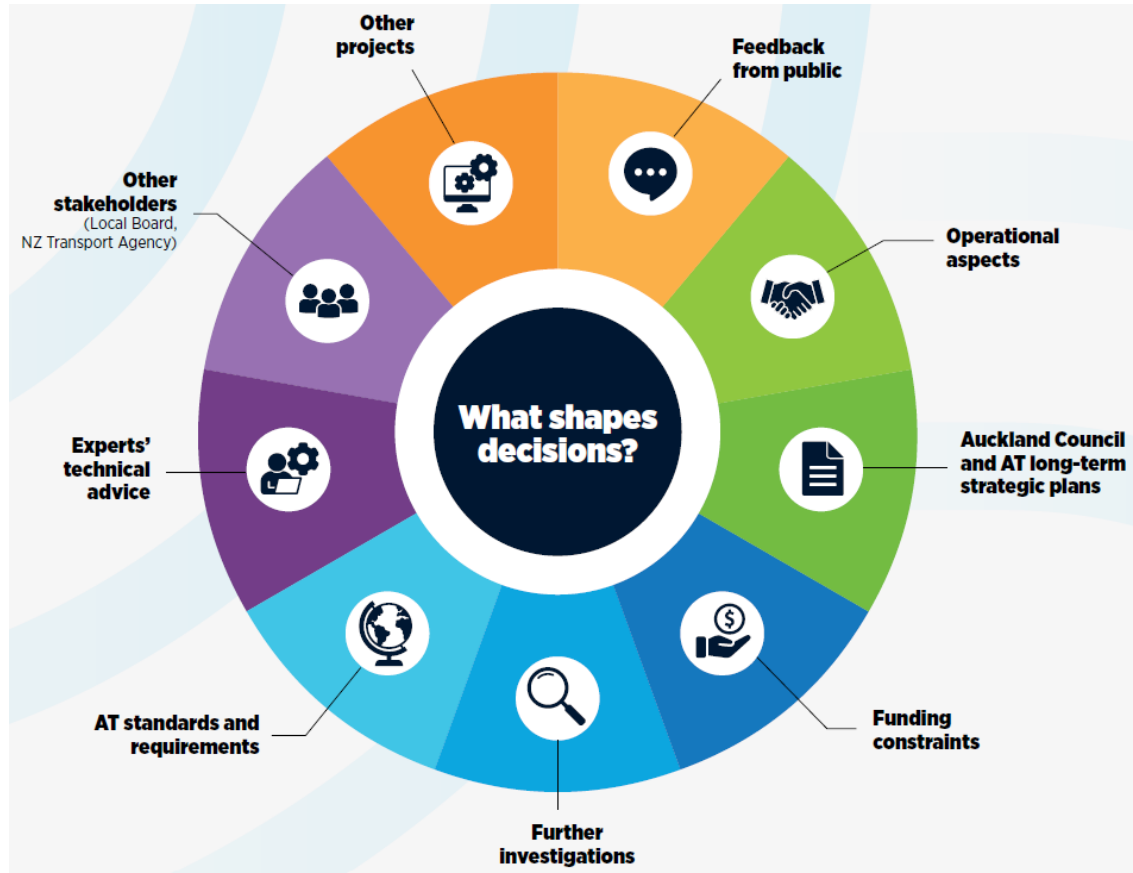
Tom Taylor, Checkpoint reporter
Tom.Taylor@rnz.co.nz



The 'Decision Wheel'

It's not just about feedback

- Yes, we received a substantial number of submissions about the Gulf Harbour ferry
- But we have other factors to consider, not just feedback
- We cannot do something *just* because lots of people request it



Whangaparāoa Public Transport Study

An independent study

- To look at the future of public transport on the peninsula
- Recommend a public transport network that benefits most people and represents value for money



New study puts peninsula's public transport under microscope

Whangaparāoa Public Transport Study

Three possible future public transport networks

1. Existing buses and ferry run more often.
2. NX2 via O Mahurangi Penlink to new Whangaparāoa Station, and frequent 99 bus service between Gulf Harbour and Whangaparāoa Station. No ferry service.
3. Gulf Harbour ferry and and frequent 99 bus service between Gulf Harbour and Hibiscus Coast Station.

While each was a feasible network, the study could recommend taking elements from each for the final network, providing balance.



AT promotes three public transport scenarios for peninsula

Engagement strategy

To better understand the community we serve

Participants were shown the three possible future public transport networks.

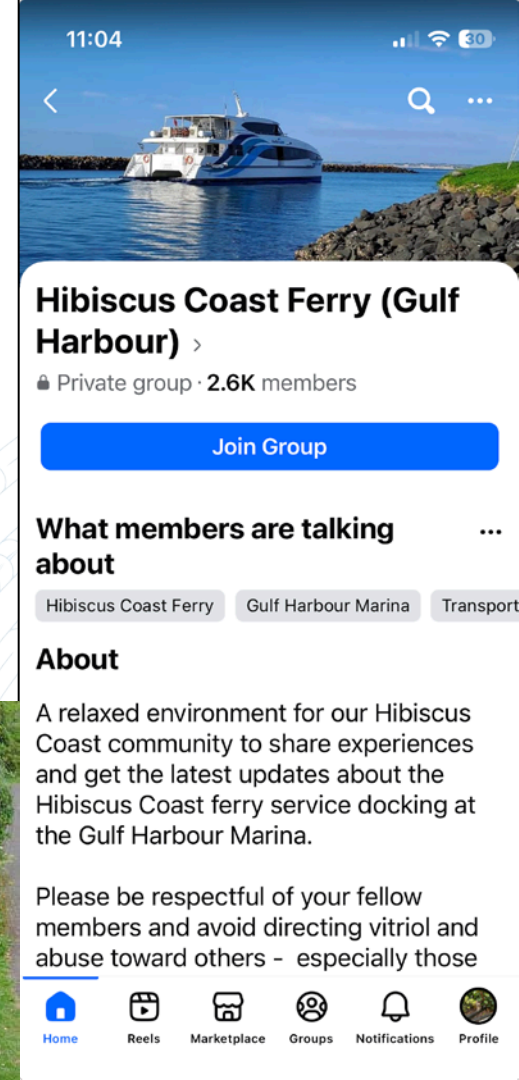
They were asked:

- Which network they preferred.
- What they liked about it and how it could be improved.
- Which service features and geographic areas were important.

Feedback was collected through:

- Public survey (online and on paper).
- Youth survey (online only).
- In-person public drop-in sessions.

2,907 survey responses.



Engagement strategy

People can understand complex information about the future, with help

Example journeys and times to allow comparison, based on:

- Existing public transport journey times.
- 60kmph on O Mahurangi Penlink.
- Forecasted changes in traffic and journey times until 2031.

Public transport journey and estimated journey time				
From	To	Scenario 1 – Existing buses and ferry run more often	Scenario 2 – NX2 via O Mahurangi Penlink, 99 bus service	Scenario 3 – Gulf Harbour ferry service, 99 bus service
Whangaparāoa Library (corner of Whangaparāoa Road and Main Street)	Silverdale (Corner of Silverdale Street and Central Boulevard)	28 minutes. 983 bus.	28 minutes. 983 bus.	28 minutes. 99 or 983 buses.
	Constellation Station	54 minutes. 982 bus, and NX1 or NX2 buses. Transfer at Hibiscus Coast Station.	37 minutes. 99 or 983 buses, and NX2 bus. Transfer at Whangaparāoa Station.	54 minutes. 99 bus, and NX1 or NX2 buses. Transfer at Hibiscus Coast Station.
	City Centre (Corner of Queen Street and Wyndham Street)	84 minutes. 982 bus, and NX1 or NX2 buses. Transfer at Hibiscus Coast Station.	58 minutes. 99 or 983 buses, and NX2 bus. Transfer at Whangaparāoa Station.	78 minutes. 99 bus, and NX1 or NX2 buses. Transfer at Hibiscus Coast Station.
99 minutes. 988 bus and Gulf Harbour ferry. Transfer at Gulf Harbour Marina.		93 minutes. 988 bus and Gulf Harbour ferry. Transfer at Gulf Harbour Marina.		

Targeted youth engagement

“Help us understand the needs of young people, so public transport doesn’t just meet the needs of old people.”

Young people are often under-represented.

But young people:

- Have very different needs.
- Could be using the services for a long time.

986 youth survey responses.

Strong external support is needed as not everyone will be happy.

“They want the opinions of non-voting teenagers!”

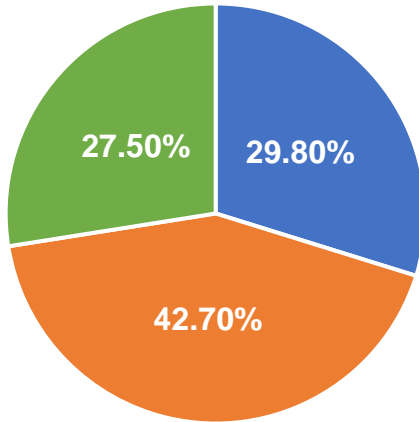
“Is that even legal?”



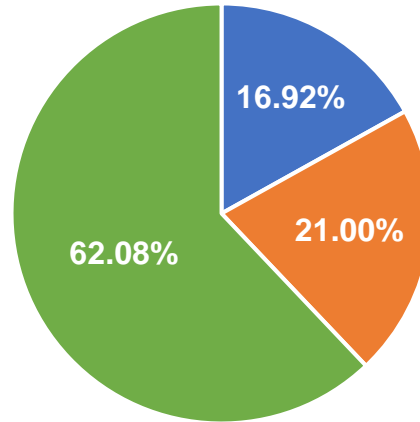
Targeted youth engagement

Youth survey data was quite different from public survey data




Which is your preferred network?



Youth survey



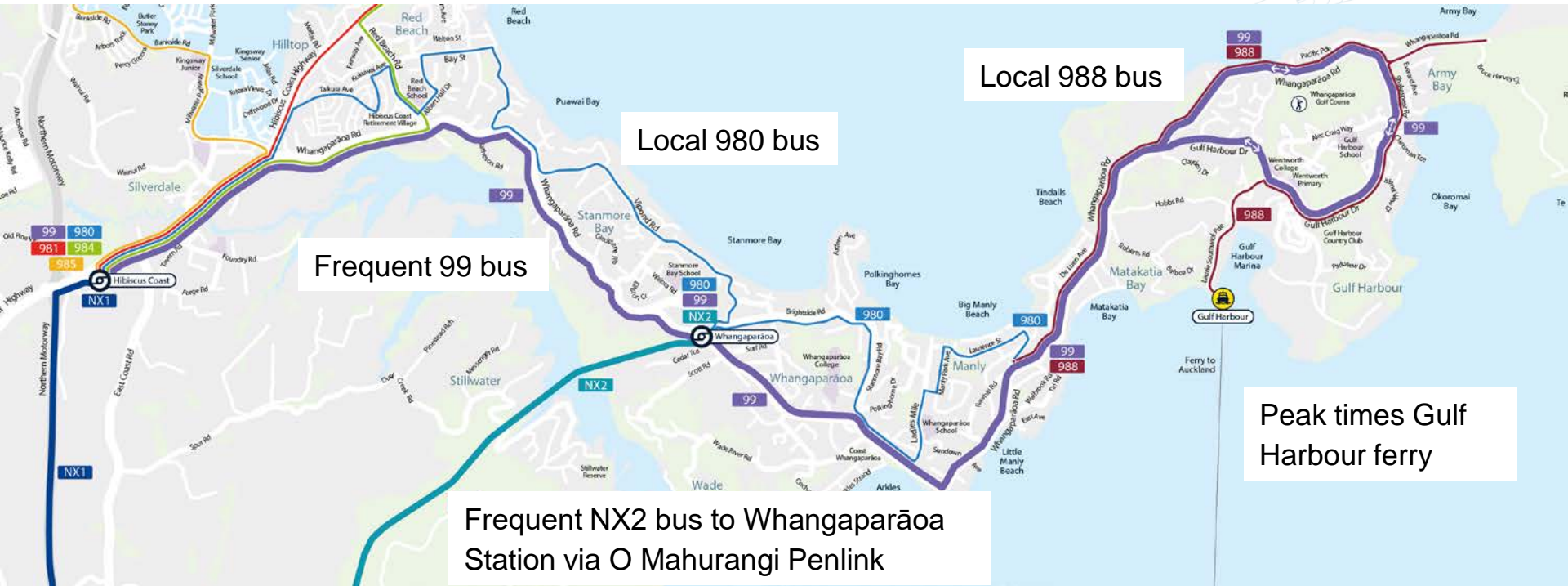
Public survey

	Scenario 1 – Existing buses and ferry run more often
	Scenario 2 – NX2 via O Mahurangi Penlink, and 99 bus service
	Scenario 3 – Gulf Harbour ferry service and 99 bus service



The future public transport network for the peninsula

- Balances frequency, coverage, resilience and cost
- Leverages investment in O Mahurangi Penlink
- Recognises the desire to retain a ferry service
- Gives people travel choices



Lessons learned

- Clean sheet vs trying to cover every possible scenario.
- Focus on the various aspects of the scenarios.
- Engage with key stakeholders early, particularly if there is mistrust.
- Engage with youth – they are open minded and can look beyond the status quo.
- No matter how many people we talk to or however balanced the network, we never make everyone happy (nah, just kidding, we've always known that!)



Thank you



Think
before
you print

