



# WINE INDUSTRY SPOTLIGHT





## INTRODUCTION

The beverage industry, including the wine sector, relies on efficient material handling systems to maintain smooth production, minimise downtime, and uphold quality standards. Tynic offers tailored solutions, including engineering plastics and conveyor products. Equipped with a state-of-the-art 3D scanner, Tynic also specialises in the reverse engineering and supply of OEM componentry.

In the harvesting stage, our durable components ensure seamless transport of grapes, withstanding the demands of outdoor and high-volume operations. During crushing, precision-engineered change parts gently handle the fruit, protecting quality and optimising throughput.

In bottling and packaging, Tynic's high-performance engineering plastics and custom change parts provide exceptional reliability in high-speed production. Designed to meet stringent efficiency standards, our components ensure consistent performance.

## MANUFACTURING PROCESS



**HARVESTING**



**CRUSHING**



**BOTTLING**



**PACKAGING**

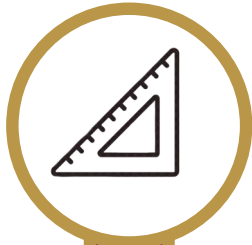


## END-TO-END PROJECT DELIVERY

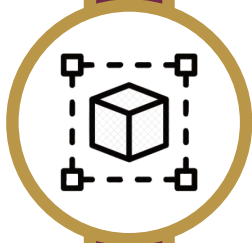
Tynic Automation specialises in reverse engineering OEM components. This capability allows Tynic to analyse, redesign, and manufacture components to improve the pricing, lead time and efficiency of OEM componentry.

### CUSTOMER JOURNEY

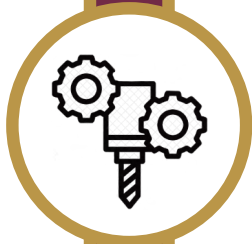
MEASURE



MODEL



MACHINE



DELIVER



**“TYNIC’S TEAM WAS  
SUPPORTIVE FROM  
PROJECT CONCEPTION  
THROUGH TO  
COMPLETION”**



## GRAPE HARVESTING



The wine harvesting industry in Australia plays a critical role in the nation's agricultural and economic landscape, and Tynic Automation is proud to support this vital sector. As a trusted supplier of engineered components and aftermarket spare parts, Tynic ensures grape harvesting machinery operates at peak efficiency during the demanding harvest season. Modern wine harvesters are essential for precision, reliability, and operator comfort, directly impacting the quality of the harvested grapes. Tynic's expertise ensures machinery downtime is minimised, helping producers meet their harvest goals. A thorough understanding of every phase of wine production—from grape cultivation to processing—is key to maintaining Australia's reputation for premium-quality wines, and Tynic is proud to play a part in this success.



## AFTERMARKET COMPONENTRY

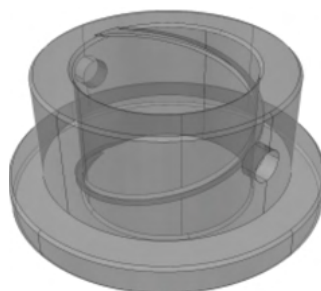
Our **Catcher Trays** are machined from recycled black TYNALENE 9000 UHMWPE. Unlike most applications, where virgin UHMWPE is typically favoured, the recycled variant is preferred in this context due to its reduced bowing, a result of its shorter molecular strands.

**Pivot Arm Bushes** play a crucial role in the picking head of harvesters. These components are engineered using TYNALYTE ZX, a PTFE-filled grade of PET. This material selection provides exceptional strength under load with an enhanced coefficient of friction, due to a PTFE filler.

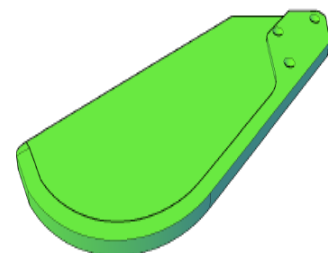
Extruded nylon **Picking Rods** are utilised the world leading harvester brands. Also known as "bo peep rods", picking rods shake grapevines to harvest the fruit with minimal damage.



Picking Rods



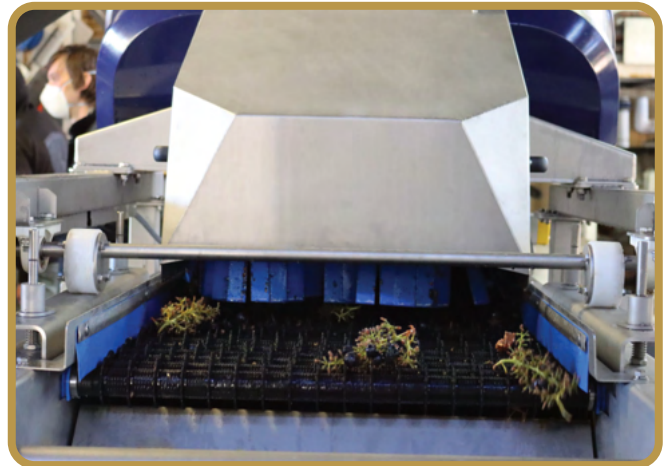
Pivot Arm Bushes



Catcher Trays

## GRAPE CRUSHING

The grape crushing stage is where the magic of wine production begins, transforming freshly harvested fruit into exceptional wines. Tynic Automation supports this process by providing high-quality aftermarket components specifically engineered for the rigorous demands of crushing equipment. Designed for durability and precision, these components ensure smooth and efficient machinery operation, even during peak harvest periods. With a focus on minimising wear and tear, Tynic's components provide reduced maintenance cost and lead times, offering long-term value to producers. Trusted by Australia's leading wineries, Tynic's solutions contribute to the consistency and quality of wine production, playing a vital role in maintaining Australia's reputation for world-class wines.



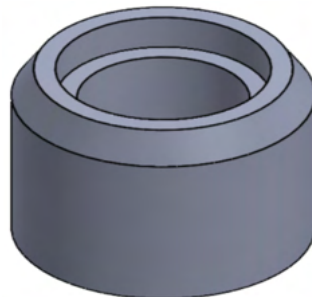
## AFTERMARKET COMPONENTRY

Our **Rollers** for grape crushing machinery are precision manufactured from TYNALON, a durable black nylon material specifically chosen for its strength and resistance to wear. TYNALON's properties make it ideal for handling the repetitive and high-impact forces experienced during the crushing process. Tynic also supplies **Rubber / Polyurethane Rollers**, offering versatile solutions for crushing machinery.

Tynic manufactures custom **Sprockets** for wine processing equipment, which are engineered to provide smooth and efficient power transmission within the harvester's picking mechanisms. These sprockets are engineered for precision fit and reliability, ensuring smooth operation and minimal wear over extended use in demanding environments.



**Rubber/Polyurethane Rollers**



**Plastic Rollers**



**Sprockets**





## WINE BOTTLING

The bottling stage is a critical engineering challenge in wine production, focused on the precise transfer of wine into bottles while preserving its integrity and flavour. Modern bottling lines must meet hygiene standards and operate under demanding conditions, including high-speed filling cycles, variable liquid dynamics, and the prevention of oxygen ingress. Efficiency is paramount, with systems designed to minimise downtime and ensure seamless operation during peak production. Precision engineering enables accurate filling volumes, consistent flow rates, and the reduction of product wastage, optimising both productivity and sustainability. Bottling is not merely a mechanical process; it represents the culmination of the winemaking journey, ensuring every bottle reflects the intended character of the wine.

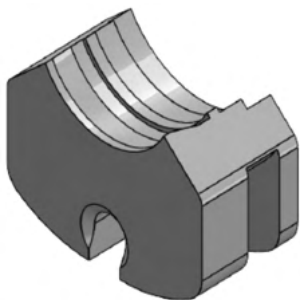


## AFTERMARKET COMPONENTRY

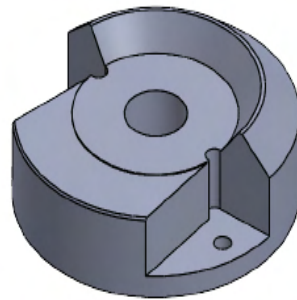
Tynic's **Bottle Neck Grippers** are precision-engineered to securely hold bottles during the filling process. Manufactured from soft HDPE material, these grippers provide excellent durability and grip strength, while preventing bottle damage even at high speeds.

Our engineering team has also designed and manufactured **Base Plates** for some of Australia's largest bottlers. These critical components align and secure the positioning of bottles during the filling and sealing processes.

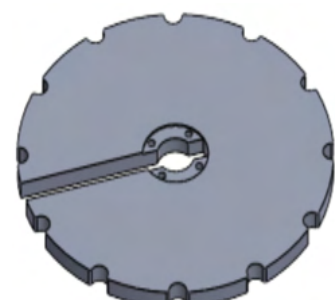
**Star Wheels**, machined and engineered by Tynic, play a vital role in the accurate alignment and transfer of bottles through the filling line. These components are engineered for precision and reliability, ensuring bottles are consistently positioned for each stage of the process.



**Bottle Neck Grippers**



**Base Plates**



**Star Wheels**

## WINE PACKAGING



The final stage of the wine industry process is packaging and labelling, where functionality meets presentation, ensuring the wine's journey from winery to consumer is seamless and impactful. Precision labelling systems must operate with consistent accuracy to apply branding and regulatory details cleanly at high speeds. These systems are equipped with sensors and advanced control mechanisms to maintain alignment and positioning, ensuring optimal performance. Advanced packaging machinery arranges bottles into protective cartons, balancing speed with careful handling to prevent damage. The machinery utilises automated robotic arms, conveyors, and smart sorting technology to increase throughput while minimising human error. Tynic supplies reliable components that ensure the smooth operation and efficiency of packaging machinery.

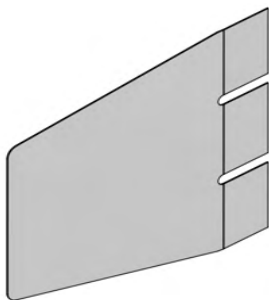


## AFTERMARKET COMPONENTRY

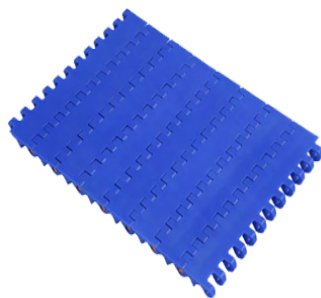
**Polypropylene Sleeves** supplied by Tynic provide a guide and protection for wine bottles during the packaging process. Their flexibility and durability ensure secure handling as bottles drop into boxes, minimising the risk of damage.

**SYNAPLEX™ Chain and Belt** assists with efficient movement through the production line. Crafted by one of the worlds largest contract extruders, SYNAPLEX™ products are designed to ensure continuous operation within challenging environments.

**UHMWPE Wear Strips and Profiles** from Tynic are designed to reduce friction, as well as protect and guide product along the production line.



PP Sleeves



Conveyor Chains & Belts



Wear Strips & Profiles



**ENGINEERING PLASTICS  
CONVEYOR PRODUCTS**

# “ONE STOP SOLUTION FOR **ENGINEERING PLASTICS & COMPONENTRY**”

Utilising state-of-the-art technology, Tynic provides a complete engineering package from conception to supply. With 15 active machining centres, Tynic efficiently produces components with minimal tolerances and flawless finishes.



## **QUEENSLAND (HO)**

e: [sales@tynic.com.au](mailto:sales@tynic.com.au)  
16 Machinery Street  
Darra 4076

## **SOUTH AUSTRALIA**

e: [sa@tynic.com.au](mailto:sa@tynic.com.au)  
U2/169 South Road  
Ridleyton 5008

## **NEW SOUTH WALES**

e: [nsw@tynic.com.au](mailto:nsw@tynic.com.au)  
Schofields 2769

## **VICTORIA**

e: [vic@tynic.com.au](mailto:vic@tynic.com.au)  
Berwick 3806

## **WESTERN AUSTRALIA**

e: [wa@tynic.com.au](mailto:wa@tynic.com.au)  
Malaga 6090